

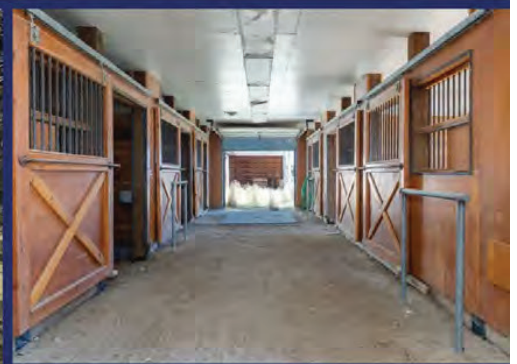


**COLDWELL BANKER**  
**EXCEL**



**VERONICA G. ELDRIDGE**

775.934.428 8 ✉ [veronica@cbelko.com](mailto:veronica@cbelko.com)  
NV LICENSE # 5.062587 • 700 IDAHO ST. ELKO, NV



## 141 COUNTRY CLUB PKWY.

SPRING CREEK, NV 89815 | MLS # 3627069

**\$649,000** 6 BEDS | 4 BATHS | 4,508 SQFT

Welcome to 141 Country Club Parkway - an exceptional horse-friendly estate nestled on 3.29 acres in the desirable Spring Creek community. This expansive ranch style home offers 6 spacious bedrooms and 4 full bathrooms in 4,508 square feet of well-maintained living space.

The chef's kitchen features newly installed granite countertops, and the open layout flows effortlessly across hardwood, tile and carpet finishes. Outside you'll find a full-sized barn with tack room and hay storage plus a massive 1,080 sq ft shop equipped with a high-capacity automotive hoist—ideal for Vehicle Enthusiasts or small business use. The property's mature landscaping and mountain views complete the picture of functional luxury in a peaceful country setting.



## 127 LAKEVIEW DRIVE

RUBY VALLEY, NV 89833 | MLS # #362072



**\$179,000** 2 BEDS | 2 BATHS | 896 SQFT

For all you outdoor enthusiasts, welcome to this cute single wide mobile home, together with a cabin and bunkhouse located in the heart of Shanty Town. Nestled in the serene and scenic Ruby Mountain range, this property offers a rare blend of rustic charm and practical living. This is a place to unplug and reconnect with nature while retaining a functional live-in setup.

