

ALC  
GRI

Paul Bottari Realtor®  
B.0015476  
775-752-0952  
paul@bottarirealty.com  
All Accredited Land Consultant (ALC)



Hannah Roberts, Realtor®  
NV License: # 172741  
931-436-0711  
hannahroberts0711@gmail.com



ABR  
GRI

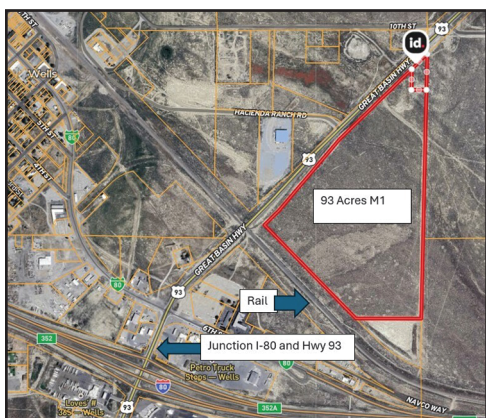
Lori Bottari Realtor®  
S.0030783  
775-752-0962  
lori@bottarirealty.com

## 9034 Ruby Valley Road in Ruby Valley



This 17 acre property has a custom home of 2348 sq. ft with 3 bedroom and 2 bath and 4 quonset type storage buildings.

Lot's of trees and a view to die for of the Ruby Mountains. Less than a mile to the paved road and on a good maintained County Road. School just 2 miles South and Church 1 mile North. Call Paul Bottari on this one.



## 93 Acres M1-2 Industrial in Wells

On Hwy 93 and adjacent to Rail access  
To City water and sewer power on site:

**Priced to sell at \$500,000**