

DISCOVER

2026 Edition

MAGAZINE

Your guide to
businesses,
services and
organizations in
Effingham County



A LOOK BACK AT ASPECTS OF EFFINGHAM COUNTY HISTORY

TOP LAWYERS

E. CENTRAL ILLINOIS

BASED UPON A SURVEY OF THEIR PEERS



These **LEADING LAWYERS** have been recommended by their peers to be among the **TOP LAWYERS** in Illinois.

Barbra A. Webber Family; ADR: Family	Barbra A Webber Attorney at Law	Champaign	217.531.1147
Jeffrey I. Cisco Criminal Defense: DUI; Criminal Defense: Felonies/Misdemeanors; Nursing Home Negligence; Personal Injury: General; Workers' Compensation	Cisco Law PC	Champaign	217.991.0409
Elizabeth Eberspacher Nohren Adoption/Reproductive Technology; Close/Private Held Business; Family; ADR: Family; Trust/Will/Estate	Dove & Dove	Shelbyville	217.774.2137
R. Samuel Postlewait Agriculture; Close/Private Held Business; Commercial Litigation; Real Estate: Commercial; Trust/Will/Estate	Hughes Tenney Postlewait Coale LLC	Decatur	217.428.5383
Todd A. Bresney Personal Injury: General	Kanoski Bresney	Champaign/Decatur	217.356.1520
William J. Harrington Personal Injury: General	Kanoski Bresney	Champaign/Decatur	217.356.1570
Robert M. Javoronok Jr. Personal Injury: General; Workers' Compensation	Kanoski Bresney	Champaign/Decatur	217.356.1570
Todd L. Lindquist Personal Injury: General	Kanoski Bresney	Champaign/Decatur	309.829.5700
Kathy A. Olivero Workers' Compensation	Kanoski Bresney	Champaign/Decatur	217.356.1570
John J. Waldman Personal Injury: General; Workers' Compensation	Kanoski Bresney	Champaign/Decatur	217.356.1570
Adriel E. Zupances Personal Injury: General	Kanoski Bresney	Champaign/Decatur	217.356.1570
Richard P. Klaus Civil Appellate; Commercial Litigation; Personal Injury Defense: General; Professional Malpractice Defense; Real Estate: Commercial	Klaus LeFebvre & Wince LLP	Champaign	217.337.4700
Thomas B. Borton Commercial Litigation; Medical Malpractice Defense; Professional Malpractice Defense	Langhenry Gillen Lundquist & Johnson LLC	Champaign	217.607.8144
Keith W. Casteel Agriculture; Banking/Financial Institutions; Environmental; Real Estate: Commercial; Trust/Will/Estate	Samuels Miller Schroeder Jackson & Sly LLP	Decatur	217.429.4325
Joshua J. Dubbelde Close/Private Held Business; Real Estate: Commercial; Real Estate: Residential; Trust/Will/Estate	Samuels Miller Schroeder Jackson & Sly LLP	Decatur	217.429.4325
Scott E. Garwood Close/Private Held Business; Mergers/Acquisitions; Real Estate: Commercial; Trust/Will/Estate	Samuels Miller Schroeder Jackson & Sly LLP	Decatur	217.429.4325
James T. Jackson Commercial Litigation; Personal Injury Defense: General; School	Samuels Miller Schroeder Jackson & Sly LLP	Decatur	217.429.4325
Craig W. Runyon Banking/Financial Institutions; Creditor Rights/Commercial Collections; Real Estate: Commercial; Real Estate: Residential; Trust/Will/Estate	Samuels Miller Schroeder Jackson & Sly LLP	Decatur	217.429.4325
Darrell A. Woolums Agriculture; Banking/Financial Institutions; Governmental/Municipal/Lobbying/Administrative; Real Estate: Commercial; Trust/Will/Estate	Samuels Miller Schroeder Jackson & Sly LLP	Decatur	217.429.4325
Nicholas M. Schiro Personal Injury: General; Workers' Compensation	Schiro & Themer	Danville	217.443.1721
Rowan E. Themer Personal Injury: General; Workers' Compensation	Schiro & Themer	Champaign	217.607.0750
Timothy M. Shay Personal Injury: General; Personal Injury: Professional Malpractice; Workers' Compensation	Shay & Associates Law Firm LLC	Decatur	217.425.5900
Nicholas T. Williams Personal Injury: General	Shay & Associates Law Firm LLC	Decatur	217.425.5900
Denise Knipp Bates Elder; Real Estate: Residential; Trust/Will/Estate	Thomas Mamer LLP	Champaign	217.351.1500



Justin N. Brunner Civil Rights/Constitutional; Governmental/Municipal/Lobbying/Administrative; Medical Malpractice Defense; Personal Injury Defense: General	Thomas Mamer LLP	Champaign	217.351.1500
Eric S. Chovanec Close/Private Held Business; Employment: Management; Labor: Management; Workers' Compensation Defense	Thomas Mamer LLP	Champaign	217.351.1500
James D. Green Insurance/Insurance Coverage/Reinsurance; Personal Injury Defense: General	Thomas Mamer LLP	Champaign	217.351.1500
Richard R. Harden Medical Malpractice Defense; Personal Injury Defense: General	Thomas Mamer LLP	Champaign	217.351.1500
Jacob R. Jackson Real Estate: Commercial; Real Estate: Residential; Trust/Will/Estate; Workers' Compensation Defense	Thomas Mamer LLP	Champaign	217.351.1500
Nathan T. Kolb Civil Appellate; Insurance/Insurance Coverage/Reinsurance; Medical Malpractice Defense; Personal Injury Defense: General	Thomas Mamer LLP	Champaign	217.351.1500
Kenneth D. Reifsteck Civil Appellate; Workers' Compensation Defense	Thomas Mamer LLP	Champaign	217.351.1500
Nathaniel M. Schmitz Close/Private Held Business; Real Estate: Commercial; Real Estate: Residential; Trust/Will/Estate	Thomas Mamer LLP	Champaign	217.351.1500
John M. Sturmanis Workers' Compensation Defense	Thomas Mamer LLP	Champaign	217.351.1500
Lott H. Thomas Trust/Will/Estate	Thomas Mamer LLP	Champaign	217.351.1500
John T. Wozniak Close/Private Held Business; Real Estate: Commercial; Real Estate: Residential; Trust/Will/Estate	Wozniak & Associates	Urbana	217.367.1647

These EMERGING LAWYERS have been recommended by their peers to be among the TOP LAWYERS in Illinois who are 40 years of age or younger OR who have been admitted to the practice of law for 10 or fewer years.

Elizabeth M. Reynolds Workers' Compensation	Kanoski Bresney	Champaign/Decatur	217.356.1570
Stephanie I. Shay-Williams Personal Injury: General; Workers' Compensation	Shay & Associates Law Firm LLC	Decatur	217.523.5900
Tiffany J. Byrne Commercial Litigation; Employment: Management; Workers' Compensation Defense	Thomas Mamer LLP	Champaign	217.351.1500
Alyson D. Cloyd Medical Malpractice Defense; Personal Injury Defense: General	Thomas Mamer LLP	Champaign	217.351.1500
Philip J. Pence Employment: Management	Thomas Mamer LLP	Champaign	217.351.1500
Litany A. Thompson Real Estate: Commercial; Real Estate: Residential; Trust/Will/Estate	Thomas Mamer LLP	Champaign	217.351.1500

Leading LawyersSM
*Find a better lawyer, faster*SM

emerging lawyersSM
*on a fast track to the top*SM

A lawyer CANNOT buy the distinction of Leading or Emerging Lawyer. The distinction was earned by being among those lawyers most often recommended by their peers. For a full description of our research process, a complete list of all Leading or Emerging Lawyers, and to view profiles of the lawyers listed on this page, go to

www.LeadingLawyers.com

A Division of Law Bulletin Media – est. 1854

When you bank at LLCU, you invest in the community.

28 Counties • 15 Branches • 10 Cities

Home • Auto • Personal • Business



LLCU

LAND OF LINCOLN CREDIT UNION

LLCU.ORG • 844.222.7788





Ron and Carolyn Peters portray Ruth and Griffin Tipsword at a tombstone dedication in rural Beecher City in 2013. Griffin Tipsword is noted historically as the first white settler of Effingham County. Effingham Daily News file photo

PAGE

12

The Early Settlers of Effingham County

By Jane Loy Ries

6	Community Information	28	Banks & Credit Unions
7	Human Services	28	Hotels & Lodging
8	Nursing Homes & Senior Assistance Centers	28	Housing
12	The Early Settlers of Effingham County	30	Restaurants
14	Medical Facilities, Providers & Specialists, Pharmacies	32	The Journey of the Purple Heart
19	Sarah Bush Lincoln Clinics & Services — Effingham	34	Fine Arts
20	HSHS St. Anthony's Memorial Hospital and HSHS Medical Group Clinics and Services	35	Industry
21	Parks & Recreation	36	Logistics Services
22	Health & Fitness	38	Winter in Effingham County
23	Funeral Homes	41	Effingham County Elected Officials
23	Cemeteries	43	Effingham City Elected Officials
26	Evolution of the Art and Architecture of St. Francis of Assisi Church in Teutopolis	44	State & Federal Officials
		45	Voting Precincts & Polling Places
		46	Public Schools
		46	Private Schools
		46	Colleges

**discover
on the web**

Discover and other EDN magazines on the web:
effinghamdailynews.com/news/magazines/

PUBLISHER

Amy Winter
amy.winter@effinghamdailynews.com

EDITOR

Jeff Long
jeff.long@effinghamdailynews.com

CONTRIBUTING EDITOR

Cathy Griffith
cathy.griffith@effinghamdailynews.com

ART DIRECTOR

Natalie Reidford

CONTRIBUTORS

Jane Loy Ries
 Linda Ruholl

SALES SUPERVISOR

Jody Hardiek
jody.hardiek@effinghamdailynews.com

ADVERTISING SALES CONSULTANTS

Julie Harkins
advertising@effinghamdailynews.com

CONTACT US

217-347-7151

E-MAIL

news@effinghamdailynews.com

Discover is published in the summer by the Effingham Daily News at 201 N. Banker St., Effingham, IL 62401.

Reproduction or use of editorial or graphic content in any manner without permission is prohibited.

Copyright © 2026 by CNHI, LLC.

effinghamdailynews.com

Please recycle when you're done with it!



ON THE COVER: In this 2022 file photo, members of the Vahling family of Sigel visited Joan's Candies at the Effingham Farmers Market. The market is open Saturdays from 8 a.m. until noon through Oct. 31. Effingham Daily News file photo

COMMUNITY INFORMATION

POSTAL DELIVERY

The Effingham Post Office provides city, rural and post office box mail delivery. The office is located at 210 North Third St. Hours are 7:30 a.m. to 5:30 p.m. Monday thru Friday and 8:30 a.m. to 12:30 p.m. on Saturdays. The lobby is open 24 hours and 7 days a week. For further information, call 217-342-6016.

UTILITIES

Effingham Water and Sewer Department
201 E. Jefferson
To set up service call
217-342-2366
M-F 7:30 a.m. - 4:30 p.m.

EJ Water Cooperative
108 S. Main St, Dieterich
217-925-5566

Lake Sara Area Water Cooperative
114 W Washington Ave, Effingham
217-342-9658

Effingham Water Authority
307 N.Third St, Effingham
217-347-7333

GAS AND ELECTRIC

Ameren CIPS: 1-800-755-5000
Norris Electric Cooperative:
618-783-8765

T.V., INTERNET AND PHONE

Mediacom Communications:
107 S. Henrietta St., Effingham
855-633-4226

Fidium:
1-844-434-3486

Wabash Communications:
618-665-3311

INTERNET

American Fiber Network Inc.:
111 N. Commercial Dr., Teutopolis
217-367-1578

Fidium
1-844-434-3486

Frontier Communications Corporation
801 W. Jackson St., Altamont
618-483-6191

KNR Wireless, LLC
306 S. 4th St., Suite F, Effingham
217-347-5967

T-Mobile
910 N. Keller Dr., Effingham
217-708-4151

Verizon
900 E. Fayette Ave., Effingham
217-342-2611
1304 Thelma Keller Ave.,
Effingham
217-347-8811
110 S. Henrietta St., Effingham
217-347-7462

Wabash Communications
108 S. Main St., Dieterich
217-925-4321

GARBAGE

Rumpke - Landfill 33
800-828-8171
1713 S. Willow St., P.O. Box 703
Effingham

Doty Sanitation Services:
618-487-5794
2021 E. 000 North Rd.
Beecher City, IL 62414

Countryside Disposal:
217-821-1207
2329 E. 3250 Ave.,
Beecher City, IL 62414
Dumpster only service—Service
surrounding Effingham County

WASTE COLLECTION, DISPOSAL & RECYCLING

E-Environmental Solutions
2001 W National, Effingham
1-447-207-1001

MILITARY

Effingham Army Recruiting Station
1001 Ave of Mid America,
Ste. C • Effingham
217-347-5108

Effingham Army National Guard Recruiting
1206 W. Temple Ave, Effingham
217-342-6025

U.S. Navy Enlisted Recruiting
1001 Avenue of Mid-America #4,
Effingham
217-342-6411

U.S. Air Force Recruiting
Effingham
217-343-3455

U.S. Marine Corps Recruiting
1001 Avenue of Mid-America,
Effingham
217-347-2995

TRANSPORTATION

Amtrak: 1-800-872-7245
401 W National Ave., Effingham

Bales Unlimited: 217-868-9998
9845 E.1900th Ave., Shumway
balesunlcharter.com

Central Illinois Public Transit:
1-855-755-2478, 217-342-2193
1805 S. Banker St., Effingham, IL
Cefseoc.org

ETrax:
CEFS Effingham County Public Transportation
1-855-755-2478 or TTY 7-1-1
1805 S. Banker St.
Effingham, IL
cefseoc.org/etrax

Jeff's Crossroads Taxi & Delivery, LLC: 217-342-7433
508 W. Kentucky Ave., Effingham

Effingham County Memorial Airport: 217-536-5312
14449 E.1100th Ave., Effingham

Greyhound Bus Stop:
217-342-4075
2500 N.Third St • Effingham
Inside Pilot Gas Station/
McDonald's

Livin' It Up Transportation:
217-821-9083
10512 N. 450th St., Altamont

Effingham Taxi: 217-342-3119
506 South St., Effingham
effinghamtaxi.com

Orange Is The New Ride Effingham Branch: 217-258-8294
Orangeisthenewride.com

LICENSES

Automobiles: Secretary of State's Office • 1901 S. Fourth St., Ste. 2, Effingham • 217-347-7728

Marriage: Effingham County Clerk's Office • 2nd floor Effingham County Office Building • 101 N.Fourth St, Effingham • 217-342-6535

GOLF CART PERMITS

Effingham Police Department:
217-347-0774 (ask for Records)
email: epd@effinghamil.com

LIBRARY

Effingham Public Library:
217-342-2464
200 N.Third St, Effingham
effinghamlibrary.org

SCOUTING

The Boy Scouts of America:
217-429-2326
stlbsa.org

The Girl Scouts of Southern IL:
618-692-0692 or
1-800-345-6858.
GsofSI.org

WABASH COMMUNICATIONS FIBER

We're proud to be a part of Effingham

HUMAN SERVICES

EFFINGHAM COUNTY FISH HUMAN SERVICES

708 S. Linden St., P.O. Box 473 Effingham • 217-342-2200 • Follow us on Facebook.

FISH is a charitable, not for profit organization, consisting of an interfaith all-volunteer group of area residents, which is committed to elevating the quality of life for those among us in need in Effingham County. FISH derives its name from the early secret symbol for Christianity, and was started locally on June 1, 1970.

THE EFFINGHAM COUNTY HEALTH DEPARTMENT

901 W Virginia Ave., Effingham • 217-342-9237 • effcohealth.org
Effingham County Health Department provides home health services, maternal and child health services, clinical services and environmental and community health programs.

HEARTLAND HUMAN SERVICES

1200 N. Fourth St., Effingham • 217-347-7179 • Crisis Hotline 217-342-5504 • www.heartlandhs.org

At Heartland Human Services, we provide Outpatient Mental Health and Substance Use Treatment Services that are designed to meet the needs of each adult, youth, or child that comes to us. Therapy is strengths based and allows each person the opportunity to share their experience in a positive and nonthreatening environment. The length of services is dependent on each person's unique situation and services are provided in a variety of settings, including individual, couples and group therapy. We also assist individuals with employment through our Individual Placement Services program. We also offer 24 hour residential services for those with severe mental illness, with the goal of assisting the consumer in becoming independent. Case Management, individual and group therapy, and additional services are offered to those who live with us as well as those living in the community that need support services. A variety of geriatric programs are provided to those needing support services to assist seniors who wish to live independently. We accept Medicaid, Medicare, insurance and private pay.

ROAD HOME PROGRAM

1200 N. Fourth St., Ste. 104, Effingham - 312-942-8387 • Roadhomeprogram.org
The Road Home Program provides mental health care and wellness to veterans of all eras, service members and their families at no cost and regardless of discharge status.

ENDURING FREEDOM MINISTRIES

304 S. West St., Shumway • 217-240-0059
Free Laundromat, Jesus Mart (free grocery store, clothing rooms, and a hair salon), 5&2 Restaurant (soup kitchen), Locker Blessings (Christmas time give toys and other items to kids in the area using the school's lockers), and FreedomFest (outdoor street festival). No qualifications are required to use services provided.

CASA OF EFFINGHAM COUNTY

PO Box 146, 203 E.Grove Ave. (Centenary United Methodist Church).
Effingham, IL 62401 • 855-484-6403 - casa4change.org
CASA of Effingham County is a not-for-profit organization dedicated to providing highly trained volunteers to advocate for the best interests of children that have experienced abuse and neglect in the Fourth Judicial Circuit Court System. CASA Volunteers work cooperatively with the Fourth Judicial Circuit Court System to ensure prompt delivery of services and to make independent recommendations to the court concerning the child's well-being.

COMMUNITY SUPPORT SYSTEMS

618 W Main St., Teutopolis • 217-705-4300 • csscares.org
Community Support Systems is committed to enhancing opportunities to live, learn, work, and play! The organization provides employment programs, residential services, children services, early intervention services and family support. Find Community Support Systems on Facebook.

EFFINGHAM CHILD DEVELOPMENT CENTER

1101 Holly Dr., PO Box 1556, Effingham • 217-342-3062
EffinghamChildDevelopmentCenter@yolasite.com
CEFS Economic Opportunity Corporation
1805 S. Banker St • 217-342-2193

CEFS Economic Opportunity Corporation is a not-for-profit community action agency providing comprehensive human service programs for people in the service delivery area, with the agency mission to provide opportunities for people through education and support to achieve and maintain self-sufficiency. The website is cefseoc.org.

ONE HOPE UNITED

Lincolmland Building • 1901 S. Fourth St. #213, Effingham • 217-347-5880
onehopeunited.org

One Hope United is a private human service organization that has been investing in children and families for over 120 years, offering a diverse array of early childhood education, prevention, intervention and community-based programs. Our team of more than 700 talented professionals serves over 9,000 children and families each year in Illinois, Wisconsin, Missouri, and Florida.

CATHOLIC CHARITIES

1502 E. Fayette Ave, Teutopolis • 217-857-1458 • cc.dio.org
Catholic Charities is proud of its 90-plus year history of providing vital social services in our Diocese. Today, we maintain a substantial presence in ten communities throughout the twenty-eight counties of central Illinois. Area Offices operate in the communities of Alton, Carlinville, Decatur, Effingham, Granite City, Mattoon, Quincy, and Springfield

EFFINGHAM SENIOR CENTER

209 S. Merchant St., Effingham • 217-347-5569 • eccoa.info
The Mission of this agency is: To elevate the quality of life for the county's older population by providing a single and familiar focal point for the delivery of services to the elderly, by offering these services directly or via linkage to the network of available assistance; to support older persons in their efforts to live independently in their own homes as an alternative to premature or inappropriate institutionalization and to serve as advocates for the aging population and its interest.

CRISIS NURSERY OF EFFINGHAM COUNTY

924 N. Merchant St., Effingham • 217-342-3000
crisisnurseryofeffingham.com
Crisis Nursery of Effingham County provides protection from and prevention of childhood trauma, abuse and neglect through 24 hour emergency shelter care to children birth through six. Crisis Nursery offers a unique and nurturing space equipped with safe hands and open hearts to all children and families in need. Reasons why families/caregivers might reach out to the Nursery for support could include: parental stress, homelessness, medical crisis, foster placement, court involvement, job related crisis, mental health crisis or domestic violence.

FAMILY LIFE CENTER

605 Eden Ave., Effingham • 217-342-5433; 301 S. Jackson St., Newton • 618-783-5433; 225 E. S. First St., Shelbyville • 217-774-4874 • familylifepcc.org
The Family Life Center, a Christian not-for-profit ministry, provides practical assistance, education, and support to empower and equip women, men and families experiencing pregnancy, parenting and related issues to live healthy, productive lives.

EL SHADDAI HOMES

PO Box 6065, Effingham – 217-663-5293
https://elshaddaihomes.com
El Shaddai Homes is a residential Maternity home for pregnant women and their babies. This loving Christian family home provides live-in-support, parenting education, life skills, counseling, post birth after care and resource referrals.

STAR – STRATEGIC TRAINING & RESTORATION

120 W Jefferson Ave, #102, Effingham
STAR is a non-profit organization formed to support first the Effingham County Drug Court, but now also supports the full Effingham County Problem Solving Court. The mission is to support this program by educating the community regarding the impact of addiction and mental illness and to empower citizens to become involved in seeking solutions. Problem Solving Court is a specialized treatment court comprised of two parts: Drug Court and Mental Health Court. These courts are designed to give individuals who have committed crimes related to their addiction or mental illness an opportunity to receive treatment for their problems rather than incarcerating them.

NURSING HOMES & SENIOR ASSISTANCE CENTERS

Effingham Healthcare & Senior Living is a 62-bed skilled center, certified for Medicaid and Medicare. Effingham Healthcare & Senior Living is located in a residential subdivision. It provides all ranges of services, from respite care to intensified subacute nursing care. Effingham Healthcare & Senior Living provides comprehensive therapy services that include: physical, occupational and speech therapies. Effingham Healthcare & Senior Living provides adult day care services seven days a week that has been approved by the Illinois Department of Public Health. Effingham Healthcare & Senior Living has a personal kitchen for the residents to use in regaining their independence. It offers private and semi-private rooms and encourages residents to bring whatever furnishings they want for a more home-like atmosphere. Social services offer support for assisting residents and families with financial difficulties, and answers Medicare, Medicaid and private insurance questions. It is located at 1610 N. Lakewood Drive in Effingham. For more information, call 217-347-7781.

Brookstone Estates, the People's Choice in Assisted Living. Brookstone Estates of Effingham is nestled in the northwest part of Effingham, conveniently located to the hospital, sports complex, parks, doctors' offices and numerous clinics. Brookstone is proud to be presented with the People's Choice Awards for the category of assisted living in 2025 and 2026 as well as being named Best Assisted Living by US News and World Report by conducting surveys of residents and family members. And, of course, we can't forget to mention being certified as Best Place to Work by its dedicated and caring staff. Brookstone is a trusted name when it comes to assisted living for you and your loved ones, providing compassionate care with dignity, respect and love. Beautiful apartments, complete with full size kitchens, large living room, bedrooms with spacious closets, private bathrooms with walk-in showers, individual thermostat settings, outside walking path, cable and wi-fi is provided along with emergency call devices in each apartment as well as personal pendants for each community member providing

safety that gives peace of mind to family that their loved ones have 24/7 assistance. A homelike atmosphere is created when you decorate your apartment for you, and patios are available to enjoy. Certified staff provide assistance in numerous areas such as medication management, ongoing health monitoring and assessments. Weekly housekeeping and laundry services are provided but still giving the individual the independence they desire. Three meals are served daily in our dining room and snacks can always be found in just a short walk to the main lobby.

Brookstone Estates of Effingham is the county's only Supportive Living Community for adults, 65 years of age and older, that need some assistance with daily activities for continued independent living. Administered through the Illinois Department of Healthcare and Family Services, the Supportive Living program combines apartment style living with personal care and other services that are covered by the state's Medicaid program. This program is available to those on Medicaid or social security, or private pay individuals, who, after their funds have depleted, may be covered by this financial safety net, thus not forcing you to move to another community or to a traditional nursing home. Thanks to this unique state program, Supportive Living residents can live affordably and independently in an environment where personal choice, dignity, privacy, and individuality are emphasized.

Lakeland Rehabilitation & Health Care Center is situated one block north of St. Anthony's Memorial Hospital. The center is a 141-bed licensed facility. Services include a secured Alzheimer's unit, an intense therapy department that offers physical, occupational, and speech therapies, respite stay and private/semi-private rehab to home suites. Lakeland Rehabilitation & Health Care Center is located at 800 W. Temple Ave. in Effingham. For more information, call 217-342-2171.

StoneBridge Memory Care Effingham (formerly Lavender Ridge) is a memory care facility. It offers 28 private rooms, each with their own bathroom, mini-refrigerator, and sink. There are also three meals a day provided. StoneBridge Memory Care Effingham uniquely features private suites along with all of the amenities and services to create meaningful days in a warm, friendly and secure residence. Our Complete Care approach means that all services and amenities are included in one flat rate no matter what level of care your loved one requires throughout their stay with us. StoneBridge Memory Care Effingham is located at 1103 N. Maple. in Effingham, For more information, call 217-342-4150. StoneBridgeSeniorLiving.com

Evergreen Nursing & Rehabilitation is a 120-bed skilled facility, providing Medicare, Medicaid, private insurance, veterans, respite and hospice care and restorative medicine. Therapy and Wellness Center, providing PT, OT, ST, Restorative and Wellness six days a week. Evergreen's Social Service Department provides psychosocial programming, comprehensive social service, and discharge planning services. Evergreen's Activity Department plays a vital role in keeping residents active, both in the facility and community. Volunteers assist in providing enhanced quality of life for the residents. A wide variety of religious services are provided to meet the spiritual needs of the residents. Private and semi-private accommodations are available, along with the private Medicare Suites. Evergreen Nursing & Rehabilitation Center is located at 1115 N. Wenthe. in Effingham. For more information, please call 217-347-7121.

Willowbrook of Effingham is a 36 unit/Suite assisted living memory support residence designed for older adults who suffer from Alzheimer's disease or other dementia related illnesses. The program is unique in that it is designed on a much smaller scale than most assisted living memory care programs. The floor plan is designed to allow for freedom of movement and accessibility for residents, while providing a secure, safe and monitored atmosphere. Each private one-room Suite allows the resident to bring furnishings and belongings that will personalize their living quarters. Willowbrook is located at 100 Blohm Avenue in Effingham. Office hours are 9 a.m. to 4:30 p.m. Monday thru Friday. Tours of the facility can also be scheduled to meet personal schedules. For more information, call 217-342-3233. willowbrookliving.net

The Glenwood Assisted Living Community has apartments with French doors leading out to a private patio, large living and kitchen area, bedrooms with a walk-in closet and a large personal bath with a walk-in/roll-in shower. There are also many common areas within the facility for friends and family to gather, including a theatre room/chapel, coffee bar, family room with fireplace, exercise room, and an on-site beauty and barber shop. Outside, there is plenty

THANK YOU FOR VOTING THE VILLAS OF HOLLY BROOK EFFINGHAM

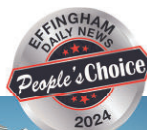
The Best Assisted Living!

8 YEARS IN A ROW! | 2017-2024

The Villas of Holly Brook Effingham celebrates living great great lives, offering well-designed apartments with convenient features, delightful dining options, and enriching activities. Our friendly staff is dedicated to making your life easier, more comfortable, and more joyful, whether you choose to relax in the game room with friends, enjoy a movie night, or simply relish maintenance-free living. Enjoy the freedom to live extraordinarily today!

CALL TODAY TO SCHEDULE A TOUR!

(217) 771-4542



904 W Evergreen Ave. • Effingham, IL 62401

www.villashollybrookeffingham.com

of green space with walking paths, gardens, and a gazebo. Events for residents include shopping trips, musical entertainment, movie nights with popcorn, ice cream socials, games, crafts and more. The nursing staff is licensed or certified and available on-site 24 hours a day/7 days a week. The Glenwood is located at 101 E. Rickelman Ave. in Effingham. For more information, call 217-347-8880 or visit glenwoodeffingham.com.

The Villas of Holly Brook is located at 904 W Evergreen in Effingham. Monthly rates includes three meals a day, expanded cable, internet service, all utilities paid except telephone, staff available 24 hours a day/7 days a week, medication reminders, assistance with bathing and dressing, weekly personal housekeeping, laundry and linen service, and an emergency personal response system. Amenities include a private dining room for entertaining, social and recreational programs, beauty salon for male and female residents, spa room, individual heating and cooling units, theatre room, pool table, two beautiful seating areas with big screen TV's and fireplace and a kitchen area for snacks and beverages. For more information, call 217-342-2345.

Lutheran Care Center in Altamont is a Continuum of Care Retirement Community (C.C.R.C.) dedicated to providing living options aimed at promoting good health. It is a community based on faith. As a CCRC, Lutheran Care Center provides a wide range of living options including skilled nursing, senior living apartments and independent, maintenance-free homes. Lutheran Care Center is able to accommodate each individual at their different stations in life. The campus also encompasses a child care facility. The children and residents have opportunities for shared, planned activities that are designed with focus on mutual physical, emotional, and social interests and needs. Lutheran Care Center is located at 702 W Cumberland Rd, Altamont, IL. For more information, call 618-483-6136. Lutheran Care Center welcomes persons of all faiths. altamontlcc.org

At **Visiting Angels**, we understand you want top quality senior home care services for your loved one. You are searching for a qualified, professional elder care provider who will treat your family member with compassion, respect and dignity. We can help you find the senior home care provider that meets all your needs. Our senior home care providers

are professionals with the training and skills you have been searching for. We'll help you find a senior home care provider who can care for all your loved one's health and well-being needs. Visiting Angels is proud to serve our veterans. Visiting Angels is located at 120 E. Section Ave. in Effingham. For more information call 217-690-4564

HSHS Home Care, a ministry of Hospital Sisters Health System, follows the HSHS mission to reveal and embody Christ's healing love for all people through our high-quality Franciscan health care ministry. We promise to provide exceptional care in your home environment. Activities are directed toward helping you to attain and maintain your highest level of independent living, and to help your family support your health journey. We will meet with you upon admission to discuss your goals and your physician's goals for your health. Efforts are also concentrated on the prevention of further disability, health teaching, and on appropriate referral to allied health professionals as needed. For more information, call 800-551-6566 or visit hshshomecare.org.

SPS Home Care Services provides trusted 24-hour and hourly in-home care throughout Effingham and the surrounding communities. Our compassionate caregivers help clients maintain independence, dignity, and comfort in their own homes through personalized care, companionship, medication reminders, and daily living assistance. For dependable home care tailored to your family's needs, call SPS Home Care Services at (217) 690-3240. SPS Home/Hospital Care is located at 207 E. Santa Maria Ave., P.O. Box 276, Effingham, IL 62401.

Avid Health at Home is committed to providing high-quality, client-centered, and affordable home care services to our clients to assist them to lead dignified and independent lives in the comfort of their own homes. Client individual needs are carefully assessed, understood, and met through the selective assignment of qualified, trustworthy, and compassionate personnel. Avid Health at Home is located at 1901 S. Fourth St., Ste. 4 in Effingham. For more information call 217-994-9016. avidhealthathome.com

Guardian Angel Adult Daycare is located at 16101 E. US Rt. 40, Teutopolis. For more information call 217-813-6027.

Large Apartments with Walk-in Showers
Private Patios & Walk-in Closets
24 Hour Certified & Caring Staff
Affordable Rates - All Utilities Included
Free Medical Transportation - Pet Friendly

“Everyone Deserves A Great Life”

The Glenwood
 ASSISTED LIVING of EFFINGHAM

The Glenwood Assisted Living of Effingham
 101 E. Rickelman Dr. | Effingham, IL. 62401
 O: 217-347-8880 | C: 217-343-1113 | F: 217-347-8870
<https://www.glenwoodeffingham.com/>

SCHACKMANN REALTY INC.



Melodie Cornwell
Real Estate Broker
217-232-3607



Johanna Holtz
Real Estate Broker
618-335-4397

*Come See Us For Your
2026 Dream Home!*



Ellen Massey, Managing Broker

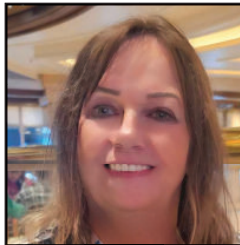
www.schackmann.com
801 W. Jefferson, Effingham
217.342.4500



AUCTIONS BY SCHACKMANN



**Mark
Schackmann**
618-562-0824



**Ellen
Massey**
217-232-5595

Real Estate • Appraisals • Commercials • Estates
Farm • Antiques • Household

Thinking about an auction? Call us!

IL # 0400003.32
IN # AU09200265

**Mark Schackmann,
Auctioneer**

Check out Our
Online
Auctions!



Not only can we sell your belongings,
we can sell your house and land too!
We are the Complete Package! Ask us how today!

hello. SOLD. happy.
AUCTIONS
SCHACKMANN INC.
www.schackmann.com

801 W Jefferson Ave., Effingham, IL
Office # (217) 342-4500
Cell Phone # (618) 562-0824



Kaye Dent
Licensed in IL



**DENTCOULSON
ELDER LAW**

*Your trusted Advisors on
the Elder Care Journey*

dentcoulsonelderlaw.com
(217) 330-5500

We are dedicated to assisting elderly clients, persons with special needs, Veterans, and all of their families and caregivers. We take pride in developing individual estate, asset preservation, and benefits eligibility plans to best address our clients' needs with a caring and practical touch.

Announcing our new Senior Associate Attorney, Steven A. Milburn

Steven joins Dent Coulson Elder Law having served eight years as legal counsel for the Illinois Department and Healthcare and Family Services Office of the Inspector General. While there, Steven was directly involved in Medicaid long-term care eligibility determinations, handling both appeals of those determinations and advising the OIGs asset discovery unit on the application of the federal and State eligibility laws. He also performed trusts reviews as part of his daily duties. Prior to his role at OIG, Steven served as Deputy General Counsel to the Illinois Department on Aging, focusing his work on advising the Adult Protective Services Program in its investigations. Steven has presented frequently to various stakeholders in the elder law community, including the Illinois State Bar Association, the Illinois Institute of Continuing Legal Education, and the Illinois Chapter of the National Academy of Elder Law Attorneys.



Steven A. Milburn

In addition to his significant estate planning experience, Steven has a personal connection to individuals with disabilities: His five year old daughter, Lottie, has Down syndrome and was recently diagnosed with San Filippo syndrome. Steven hopes to use both his experience and personal insight to advise families in developing strategies for providing care and security for their loved ones with disabilities.

Steven resides in Springfield with his wife, Abby, and their four children, Lottie, Louie, Fran, and Ella. The Milburns stay busy spending time outdoors, exercising, and visiting with family. They also enjoy traveling, often to North Carolina, Michigan, and Colorado to visit family and friends.

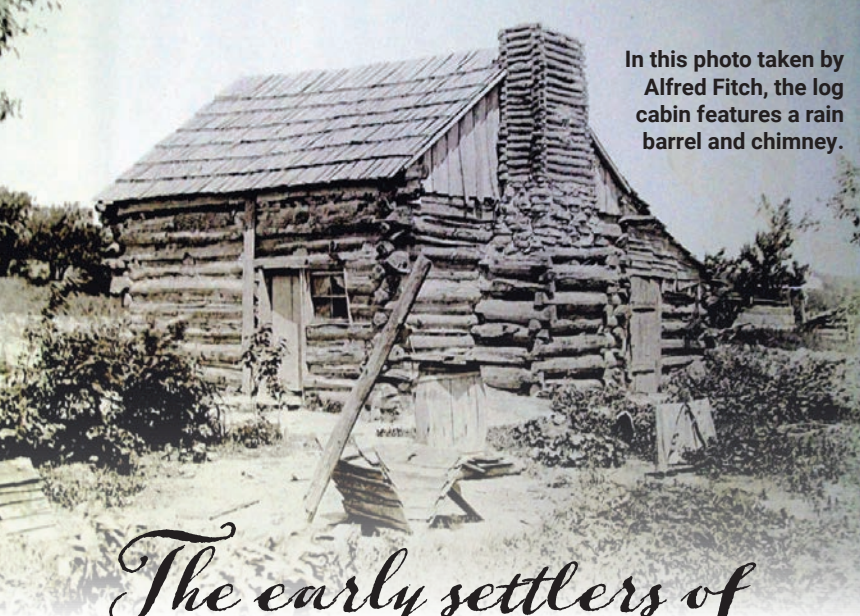
Steven attended the University of Illinois at Urbana-Champaign, earning Bachelor of Arts in Economics. He then moved to Chicago, earning his Juris Doctorate from the DePaul University College of Law. While in law school, Steven served as a legal external to the Illinois Department of Healthcare and Family Services Office of General Counsel where he researched the newly enacted Affordable Care Act and advised on Department action necessary to comply with the Act.

Steven joins Kaye Dent's team, along with Junior Associate Crystal I. Post and Wes Coulson "Of Counsel".

Call us today to schedule a consultation
Also available by appointment in Shelbyville
IL, Champaign IL, and Springfield IL.

1901 South Fourth St.
Suite 211
Effingham, IL 62401
(217) 330-5500

774 Sunset Blvd.
Suite 200
O'Fallon, IL 62269
(618) 632-7000



In this photo taken by Alfred Fitch, the log cabin features a rain barrel and chimney.

The early settlers of EFFINGHAM COUNTY

BY JANE LOY RIES
PHOTOS COURTESY OF THE EFFINGHAM COUNTY MUSEUM

*A*s we gear up to celebrate the 250th birthday of the United States, let's take a look at some of the early pioneers of Effingham County. It is because of them that so much of what became Effingham County was settled. They came with little and built a life through countless hours of hard work and perseverance.

The first white settler in what became Effingham County was Griffin Tipword. He was from Virginia originally and settled in this area around 1814. He died in 1845 and was buried along the banks of Wolf Creek. Even though his exact burial spot is unknown, a memorial marker for Griffin and his wife was placed in Tipword Cemetery. Many of us from the Effingham County Museum attended the dedication of a tombstone for Griffin and Ruth Tipword.

There are still many descendants of Griffin in Effingham County and all across the United States. Tipword Cemetery is unique in that it straddles two townships with part of the cemetery in Liberty Township and part of it in Moccasin Township.

Let's look now at other settlers who came to this area before Effingham County came into existence. In 1825, Isaac Fancher and family moved into this area. Also in 1825 were John O. Scott and the Elliott family. They were in this area initially, then moved out. But John Owen Scott moved back to this area around 1833. He was born in 1805 in Tennessee, died in 1892, and is buried in Watson Township at Watson Cemetery.

Next came Ben Campbell and Jack and Jesse Fulfer in 1826. I'm sure that Fulfer Creek gained its name from the Fulfer family. It is believed that Ben Campbell is buried in an unmarked grave in Jackson Township near Salem Cemetery in an area referred to as Old Salem Cemetery. There were many interesting tales shared about Campbell's hunting prowess and his voracious appetite.

I did find information about an Isaac Fulfer, who was one of the first deaths recorded in this area in either 1829 or 1830. He was trying to cut down a bee hive and had climbed the tree to reach the branch. As he was cutting through the large branch, it split in half and the half that came back toward the tree crushed him to death.

Isaac Fancher and Jack and Jesse Fulfer moved on to Coles County around 1834-1835.

Arriving in this area in 1828 were Stephen Austin, Thomas Brockett and family, Richard Cohea, John McCoy, Bob Moore and Dick Robinson. Stephen Austin stopped at the home of Thomas Brockett when he arrived in

this area. His wife was about to deliver a baby and needed shelter. Thomas Brockett's wife was due to deliver a child that day, too. Both babies were born Oct. 28, 1828 with Thomas Austin being born first and Martha Brockett being born shortly after.

Thomas and Martha are credited as being the first two white children born in the area we now know as Jackson Township. Thomas Austin died December 20, 1916 and is buried in Watson Cemetery. Martha (Brockett) Tucker died October 19, 1896 and is buried at Little Prairie Cemetery in Jackson Township.

More pioneers arrived in 1829. They were John Broom, Jonathan Parkhurst, Ben Allen, Mrs. Charlotte (Allen) Kepley, Jacob Nelson, Andrew Martin, Alexander Stewart, John Ingraham, John Trapp, Samuel Bratton, John Fairleigh, Alfred Warren, Amos Martin, Aunty Bratton, Andrew Lilleu, Henry Tucker, William Stephens, Allec Stewart and Bill Stewart.

John Broom eventually settled around Mason. He earned money to buy more land by working on the National Road that was coming through the area to connect to the state capital in Vandalia, Illinois.

Judge John Broom was noted for celebrating the first Fourth of July in what had just become Effingham County in 1831. John Broom was born in 1809. He was 22 at the time of the first Fourth of July celebration. I found this description of it in the 1883 county history as retold by Dr. James Matthews. Although he was not yet on the scene in 1832, the following "you were there" account of the celebration was no doubt the result of many sessions of reminiscences with the Judge.

"On the Fourth of July, 1832, a grand barbecue was instituted by Judge Broom and a few of the Vandalia boys, at Ewington. Bear meat and venison smoked upon the spits, whiskey toasts were drunk freely in tin cups and gourds, red-hot speeches were made, and the American Eagle flapped his wings and flew with patriotic pride above the hills of the Wabash.

"Judge Broom was selected to read the Declaration of Independence, and he did so, standing on an old cottonwood log just north of the bridge. He says he couldn't spell half the words of the sacred document, and to this day is in total ignorance as to how he blundered through it. But nobody was competent to criticize him and nobody laughed. The Judge pronounces that the happiest day of his life. Of that jolly band of celebrators, he is the sole survivor in Effingham County. They have all dropped away, weary of the march, long ago."

Judge John Broom died on February 9, 1886 and is buried at Mason Union Cemetery in Mason, Illinois.

In 1830, the following arrived in this area: Jesse Surrells, T. J. Rentfro, James Turner, John Allen, Micajah Davidson, Henry P. Bailey, George Neville, Alexander McWhorter, Jesse White, and Enoch Neaville. In



Shown is the Ewington Courthouse, the first county seat for Effingham County.

1831, the last to come before the organization of Effingham County were the following: Jacob Slover, Isaac Slover, John Gallant, William Gallant, Seymour Powell, Thomas Loy, William J. Hankins, the Hutchisons and John Galloway.

Now we saw them settling in near the Little Wabash, Fulfer Creek, Blue Point, Brockett's Creek Union Township, and spreading across many different areas of what would become Effingham County. Where did they come from? Virginia, Ohio, Kentucky, Tennessee, Alabama, North Carolina and many other unknown places. They crossed mountains, hills, and traversed through prairie grass so tall that it was easy to get lost in it. They forded creeks, rivers, and searched for water to drink along the way and hunted for food, too.

They traveled in rain, snow, wind, bitter cold, extreme heat and oppressive humidity. They were searching for new homes where they could make a living. They had no one to rely upon but themselves. They were pioneers. They were our early settlers.

There were now 51 families living in this area. Not all would stay and later more would come but we can look to these 51 families and remember them for being pioneers and early settlers of this area.

They got busy and started felling trees and clearing land. It was hard work felling the trees as well as getting rid of the stumps. They made temporary shelters until they could build log cabins. They often chose land near creeks so they would have water available.

The log cabins were usually one room with a loft and were often 12-by-16 feet. A chimney was added and it was often built out of wood and lined with clay and mud. The logs for the cabin were notched and then chinked with mud, clay, moss or straw. A crude window and a door were cut into the logs.

These early settlers had no glass for windows so they greased paper and hung that up in the windows. The floors were dirt and packed down hard. Wood floors were a luxury for later when they were more established. Logs were cut into shakes and used for the roof. Pegs were put into the corners of the log cabin and a crude bedstead was built. If they had rope, it was strung across the pegs along the side of the bed to form a surface upon which their straw ticks and bedding would be placed. The men worked from sunup to sundown.

The women also had massive tasks to accomplish. I'm sure most of them had brought their spinning wheels and looms with them because they knew there would be no place nearby to purchase clothing or additional bedding. The women spun their own yarn and wove it into cloth on their looms. Linsey-woolsey, a blend of cotton and wool, was a common material used by these early settlers.

The women also dressed the skins of the animals their husbands killed. They made the skins into clothing. The women also took care of the children and made all of their clothes. They also prepared, planted, hoed and harvested a large garden. Cooking was done on the hearth of the fireplace. Pots were placed directly on the fire and if they were lucky, they would have a hook where they could hang pots over the fire. All food was cooked in that fireplace and the danger of the chimney or roof catching on fire was ever-present.

Life was not easy for the women. The women also worked from sunup to sundown.

On Feb. 15, 1831, Effingham County, Illinois was formed from parts of Fayette County and Crawford County. On December 20, 1832 it was organized for local government. Ewington was made the county seat. Ewington had grown due to the National Road (aka Cumberland Road) that came through Effingham County.

They needed to hold an election to elect three county commissioners, a sheriff and a coroner. The election was at the home of Thomas Brockett and at a place in Ewington. The three election judges at Ewington were Jacob Slover, John Loy and Levi Gordon. At the home of Thomas Brockett, the three election judges were William Thomasson, M. Brockett and Jonathon Parkhurst.

The first-ever election in Effingham County, Illinois was held on January 1, 1833. Theophilus W. Short, Isaac Fancher and William J. Hankins were elected the first county commissioners and Henry P. Bailey was elected sheriff. Joseph H. Gillespie was appointed county clerk.

In the June term of 1833, James Turner succeeded Isaac Fancher as commissioner. Later, the county commissioners appointed John Loy as county treasurer and William J. Hankins as county surveyor. An auction was held to sell lots in Ewington and 22 lots were sold.

The first court cases were held and the newly formed government of Effingham County was working well.

The first census was held in 1835 by Sam Huston, who replaced John Loy as commissioner, and the population of Effingham County was found to be 1,008. The county was growing.

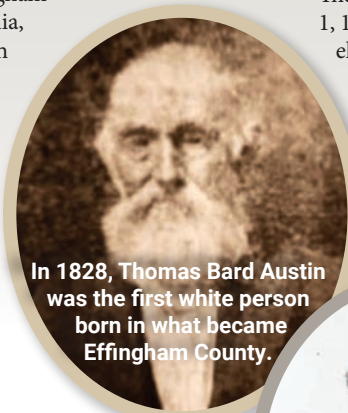
As time passed, a school was formed. The first one was a subscription school but later came free public schools. Families started church services in their homes. They worked on building roads. They all worked to improve where they lived in Effingham County.

Ewington stayed as the county seat until 1859 when a vote was held to move the county seat to Effingham. That change came because of the building of the Illinois Central Railroad which came through the small village of Broughton/Effingham. Broughton is long forgotten but Effingham grew because of the railroad. Most of the people in Ewington moved their businesses to Effingham and Ewington dwindled in size, but Effingham County continued to grow.

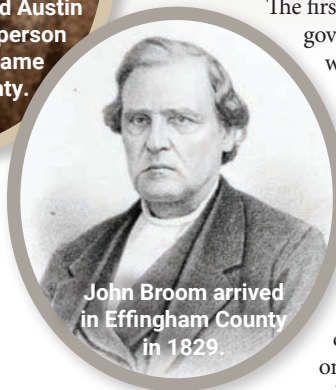
Those early settlers are the reason why we have Effingham County. They moved to where there was nothing but wilderness and kept at it until our county was formed. I can tell you that there are still descendants of those early settlers living in Effingham County today. I know many of their descendants and I am one of them. I give thanks for their determination and hard work.

If you would like to learn more about the history of Effingham County and the people who made a difference, save the date for the Effingham County Museum's 250th event on July 9 at 7 p.m. We are also hosting an event for the Effingham Public Library on July 1 at 6 p.m. The guest speaker will be EHS History teacher Ryan Ervin.

Ron and Carolyn Peters portray Ruth and Griffin Tipsword at a tombstone dedication in rural Beecher City in 2013. Griffin Tipsword is noted historically as the first white settler of Effingham County. Effingham Daily News file photo



In 1828, Thomas Bard Austin was the first white person born in what became Effingham County.



John Broom arrived in Effingham County in 1829.

MEDICAL FACILITIES, PROVIDERS & SPECIALISTS, PHARMACIES

HSHS St. Anthony's Memorial Hospital
503 North Maple St., Effingham
217-342-2121
stanthonyshospital.org

HSHS St. Anthony's Wound Healing Center
217-347-3565

Prairie Heart Institute at HSHS St. Anthony's
217-342-3700
hshs.org/heart

HSHS St. Anthony's Convenient Care
900 W. Temple Ave., Bldg. B, Ste. 1100, Effingham
217-347-1690
stanthonyshospital.org/convenientcare

HSHS St. Anthony's Women's Wellness Center
900 W. Temple Ave., Bldg. B, Ste. 2100, Effingham
217-347-1601
stanthonyshospital.org/WWC

HSHS Home Care & Hospice
900 W. Temple Ave. Bldg. A, Ste. 101, Effingham
800-551-6566
HSHSHomeCare.org

HSHS St. Anthony's Center for Interventional Pain Management
503 N. Maple St., Effingham
217-347-6702
stanthonyshospital.org/pain

HSHS St. Anthony's Diagnostic & Health Centers

- 900 W. Temple Ave., Bldg. B, Ste. 1100, Effingham
217-347-1267
- 3 Do It Drive, Altamont
217-540-2345
- 601 W. Washington St., Newton
618-783-5707
- 206 N. Pearl St., Teutopolis
217-857-6146
- 101 Coles Centre Drive, Ste. 101, Mattoon
217-540-2300

HSHS Medical Group
Multispecialty Care – Effingham
900 W. Temple Ave., Ste. 2500
Effingham
217-540-2350

- Ruben Boyajian, MD, General Surgery
- Nitin Kumar, MD, Gastroenterology
- Dean Page, MD, Plastic Surgery
- Thomas Ambrose II, MD, Orthopedic Surgeon
- Sarah Coe, MD, General Surgery
- Eduardo Vaca, MD, General Surgery

- Wendy Lim, MD, General Surgery
HSHSMedicalGroup.org
- HSHS Medical Group Diabetes and Endocrinology
500 N. Maple St., Ste. 200, Effingham
217-391-5454
HSHSMedicalGroup.org/diabetes

HSHS Medical Group Family and Internal Medicine – Effingham
900 W. Temple Ave. Bldg B, Ste. 1500, Effingham
217-347-0458
HSHSMedicalGroup.org

HSHS Medical Group Foot and Ankle Specialists
Dr. Zane Qureshi, DPM
Dr. Kevin Hsu, DPM
900 W. Temple Ave., Bldg. B, Suite 2200, Effingham
217-342-0578

Sarah Bush Lincoln Surgery Center
904 W. Temple, Effingham
217-342-1234

Springfield Clinic
springfieldclinic.com

- 300 N. Maple St., Effingham
217-342-4151

Effingham Prompt Care
Primary & Concierge Care
401 N. Mulberry St., Effingham
217-347-0768
effinghampromptcare.com

Central Illinois Urgent Care
1001 Avenue of Mid-America
Ste. 4, Effingham
217-994-9301
centralillinoisurgentcare.com

Family Care Associates
1106 N. Merchant St., Effingham
217-342-7000
familycareassociates.com

Carle Effingham
401 N. Keller Drive, Suites 3 & 4, Effingham
217-347-6400
Carle.org

SBL Bonutti Clinic
1303 W. Evergreen Ave., Effingham
217-342-3400
Walk-In Clinic, Ste. 100
217-540-6123

HSHS Medical Group Urology - Effingham
414 W Virginia Ave., Effingham
217-342-9738
HSHSMedicalGroup.org

Effingham Obstetrics & Gynecology Associates, PLLC
912 N. Henrietta St., Effingham
217-342-3337
effinghamobgyn.com

SBL Effingham Clinic
905 N. Maple St., Effingham
Family Medicine
217-347-7776, 217-347-7030

SBL ENT Clinic
Audiology & Hearing Services
217-347-7077
sarahbush.org

SBL Home Medical Equipment
903 N. Maple St., Effingham
1-800-345-3191
217-347-7372

SBL Altamont Medical Center
5 E. Cumberland Rd., Altamont
618-483-6151

HSHS Medical Group Family Medicine – Altamont
3 Do It Drive, Altamont
618-483-6131
HSHSMedicalGroup.org

HSHS Medical Group Family Medicine – Dieterich
207 S. Main St., Dieterich
217-925-5730
HSHSMedicalGroup.org

Springfield Clinic Runde (Runde Clinic)
206 N. Pearl St., Teutopolis
217-857-6481

Crossroads Cancer Care Center
905 Medical Park Drive, Effingham
217-342-2066
cancercarespecialists.org

SIHF Healthcare
900 W. Temple, Building A, Ste. 208, Effingham, IL 62401
217-342-0211
sihf.org

SBL Evergreen Clinic
General Surgery
1104 W. Evergreen Ave., Effingham
217-347-2500

BEHAVIORAL HEALTH

SBL Employee Assistance Program
L.J. Welsh, LCPC
SBL Evergreen Clinic
1104 W. Evergreen Ave., Effingham
217-258-4040

Springfield Clinic Effingham
Stephanie Flier, LCSW
300 N. Maple St., Effingham
217-342-4151

Family Care Associates
Rebecca Holkenbrink, LCPC
Kari Thompson, RPT-S, LCPC
Molly Ledbetter, LCPC
Ashley Kreke, LCPC, RPT
1106 N. Merchant St., Effingham
217-342-7000

SIHF Healthcare
900 W. Temple Ave, Bldg A, Ste. 208, Effingham
Sandra Blazek, LCSW
Rebecca Merchiroi, PMHNP-BC
217-342-0211

Meraki Health Outpatient Therapy
101 S. Linden St., Effingham
618-783-7529, ext. 400

Life Story Behavioral Health
Jennifer Tinsley, PMHNP, APRN
203 S. Main St., Dieterich
217-269-0344

Nextstep Behavioral Healthcare, LLC
1104 W. Evergreen Ave, Effingham
217-994-1865

CARDIOLOGY

Masoor Kamalesh, MD
Jessica Prange, MD
Sheri Barnett, APRN
Diana Dragnea, DMSc, PA-C
Prairie Heart Institute at HSHS St. Anthony's Memorial Hospital
503 N. Maple St., Effingham
217-342-3700

Cory Hess, ACNP
Monica Scott, APRN
Mohammad Al-Akchar, MD
Adham Karim, MD
SBL Bonutti Clinic
1303 W. Evergreen Ave, Ste. 201
217-238-4960

John H. Yang, MD
Springfield Clinic
300 N. Maple St., Effingham
217-342-4151

CHIROPRACTORS

Chiropractic Care Center
Dr. Laura Ames, D.C.
Dr. Allison Cain, D.C.
305 W Virginia Ave., Effingham
217-347-5455

Dr. Chris Dreas
Softwave Therapy
202 N. Banker St., Effingham
217-500-0987

Stanfield Chiropractic Center
414 W Jefferson Ave., Effingham
217-342-7222
stanfieldchiro@gmail.com

Effingham Physical Therapy & Massage Center
1303 Cliffview Dr., Effingham
217-821-8542

The Frichtl Clinic
Dr. Jason Frichtl, D.C.
702 N. Keller Drive A, Effingham
217-342-0311

Precision Chiropractic
Dr. Kevin Borntrager, D.C.
212 N. Fourth St., Effingham
217-347-5812

Bailey Family Chiropractic
1 E. Jefferson Ave, Altamont
618-483-3838

Disc Centers of America Effingham
Dr. Joseph Kirk, D.C.
301 N. Keller Drive, Effingham
217-342-2232
effinghamdisccenter.com

New Health Chiropractic
Dr. Justin Pals, D.C.
415 W. Virginia Ave, Effingham
217-342-3384
newhealthchiro.net

Ballard Family Chiropractic
Dr. Abbie Ballard, D.C., CACCP, CFMP
14225 E. Rickelman Ave, Ste. A, Effingham
217-347-5010
ballardfamilychiro.com

Modern Spine & Wellness
Dr. Brianna Heuerman, P.C.
100 Greenview Dr., Suite A, Effingham
217-663-5345

Dr. Samantha Morrison Chiropractor
3009 S. Banker St., Effingham
618-322-4145

Rhodes to Health Family Chiropractic &
Wellness Center
200 E. Fayette Ave., Effingham
217-500-3027

ORTHODONTISTS

Hage Orthodontics
100 Greenview Drive, Ste. A, Effingham
217-347-5576
drhageorthodontics.com

Schumacher Orthodontics
Dr. Chuck Schumacher
602 Eden Ave., Effingham
217-347-6453
schumacherortho.com

DENTISTS

Effingham Dental Group
Scott Moore, DMD
Adam Link, DMD
Nicholas Schultz, DMD
700 N. Keller Drive, Effingham
217-347-0588

Balda Dental
Chris Balda, DMD
Joe Balda, DMD
Brian Balda, DMD
911 N. Henrietta St., Effingham
217-342-3411
baldadentaloffice.net

Dr. Stephen Willenborg, DMD
610 N. Keller Drive, Effingham
217-347-7021
willenborgdental.com

Dr. Ted Koester, DMD-PC
111 S. First St., Effingham
217-342-4494

Effingham Family Dental
Jeff Stevenson, DDS
310 W. Jefferson Ave., Effingham
217-342-3850

Heartland Family Dental Care
Alison Conant, DMD
Alyssa Phinney, DMD
1379 N. Outer Belt W., Ste. B
Effingham
217-282-7092

SIHF Healthcare
Haritha Nallaparaju, DMD
900 W. Temple Ave., Bldg. A, Ste. 208, Effingham
217-342-0211

Campos Family Dental
Dr. Gregory Campos, DMD
508 W. Jefferson Ave., Effingham
217-347-4100

Teutopolis Family Dental
Dr. Brett Haarmann, DMD
Dr. Blake Westra, DMD
206 N. Pearl St., P.O. Box 235
Teutopolis
217-857-3201

Sehy and Huey General and Family Dentists,
P.L.L.C.

Christopher Sehy, DMD
Robert F. Huey, DMD
1 S. Third St., Altamont
618-483-6003

ENDOCRINOLOGY

Radhika Annam, MD
500 N. Maple St., Ste. 200, Effingham
217-391-5454
HSHSMedicalGroup.org/diabetes

Hannah Dukeman, APRN
SBL Evergreen Clinic
1104 W. Evergreen Ave., Effingham
217-234-7000

FAMILY MEDICINE

SBL Bonutti Clinic
Katie Klosterman, MD
Margo McMahon, APRN
Megan Steffen, APRN
1303 W. Evergreen, Ste. 202, Effingham
217-540-6122

SBL Effingham Clinic
905 N. Maple
Paul Oltman, MD
Sean Flynn, MD

Kendra Zerrusen, MD
Katie Koester, APRN
Jeffrey Jensen, MD
217-347-7030

Springfield Clinic Effingham
Melinda Barthelme, APRN, CNP
David Padgett, PA-C
300 N. Maple St., Effingham
217-342-4151

Springfield Clinic Runde (Runde Clinic)
206 N. Pearl Street, Teutopolis
217-857-6481

Eric A. Bloemer, MD
Sarah Kate Couch, DO
Brittany A. Denton, APRN, CNP
Bernard A. Habing, APRN, CNP
Becky L. McGinnis, APRN, CNP
Emily M. Nosbisch, APRN, CNP
SIHF Healthcare
900 W. Temple Ave, Bldg A, Ste. 208, Effingham
Dana Ruholl, FNP
Rebecca Merchiori, PMHNP
217-342-0211

HSHS Medical Group
Family Medicine
900 W. Temple Ave, Bldg B,
Ste 1500, Effingham
217-347-0458
HSHSMedicalGroup.org
Andrew Gage, MD
Stephanie Jackson, APRN
Lauren Lustig, APRN
Andrew Poulos, MD
Amanda Stroud, APRN

Orthotic & Prosthetic Services...

- Upper & Lower Limb Orthotics
- Upper & Lower Limb Prosthetics
- Cranial Remolding Orthoses
- Spinal Orthoses

Certified Prosthetist/Orthotist
Andrew Sparks, CPO
Erin Jansen, CPO

NOW IN EFFINGHAM!

**606 S. 4th St.
EFFINGHAM**

NEW HORIZONS
ORTHOTIC & PROSTHETIC
SERVICES

Mon-Fri 8am - 5pm
Call 217 - 690 - 4607
www.newhorizonsoandp.com

GASTROENTEROLOGY

Nitin Kumar, MD
900 W. Temple Ave., Building B,
Ste. 2500, Effingham
217-540-2350
HSHSMedicalGroup.org

HEARING AID SPECIALISTS

Schackmann Hearing
209 N. Third St., Effingham
217-342-0304

SBL Effingham Clinic
Audiology & Hearing Aid Services
905 N. Maple, Effingham
347-7077

Beltone Hearing Aid Service
1302 Avenue of Mid-America, Ste.
3, Effingham
217-342-1122

Audibel Hearing Center
800 N. Keller Drive, Effingham
217-858-7226

Miracle-Ear Hearing Aid Center
511 W. Virginia Ave., Effingham
217-931-1330

HORMONE THERAPY

Affinity Family Health Wellness
202 W. Center St., Dieterich
217-500-1388
affinityhealthwellness.com

INTERVENTIONAL PAIN MANAGEMENT

Anthony Guarino, MD
Lynn Potter, APRN
SBL Medical Park Plaza
901 Medical Park Drive, Ste. 200,
Effingham
217-347-2332

MEDICAL AESTHETICS

Behold Aesthetics & Wellness
Center
Adrian Nowitzke, CRNA, MSN, APRN
401 S. Banker St., Ste. C, Effingham
618-619-8846

Boho Chic Clinique
Jason McAllaster, DO
1207 Network Dr., Ste. 3A, Effingham
217-347-2646

IV Nutrition Effingham
305 W. Virginia Ave, Effingham
217-219-8911

KetAssure IV Infusion Center
1200 N. Fourth St, Effingham
217-636-1444

OPTOMETRISTS

Marion Eye Center & Optical
600 N. Keller Drive, Effingham
217-342-2900
marioneye.com

Repking Eye Care
Brian Repking, O.D.
113 E. Main St, Teutopolis
217-903-4117
repkingeyecare.com

Community Eye Care
Sehy & Jones Optometrists
M. Brian Sehy, O.D.
Matthew R. Jones, O.D.
303 N. Keller Drive, Effingham
217-342-2672

CommunityEyecare.com
Walmart Vision & Glasses
1204 Ave. of Mid America
217-342-2547
walmart.com

Weber Optiks
Tony Weber, O.D.
Christopher Weber, O.D.
Connor Kabbes, O.D.

- 1301 W. Evergreen Ave.,
Ste. B, Effingham
217-342-3838
- 5 W. Lincoln Ave., Altamont
618-881-0884
weberoptiks.com

Visionary Eyewear
903 Medical Park Dr, Effingham
217-347-3939

OPHTHALMOLOGISTS

SBL Effingham Ophthalmology
903 Medical Park Drive, Effingham
217-347-2933

PHYSICAL & OCCUPATIONAL THERAPY

SBL Altamont Medical Center
5 E. Cumberland Rd, Altamont
618-483-6151

SBL Bonutti Clinic
1303 W. Evergreen Ave, Ste. 103,
Effingham
217-342-3444

HSHS St. Anthony's Physical
Rehabilitation and Wellness

- Workman Sports & Wellness
Complex
1301 N. Maple St., Effingham
217-347-1243
- HSHS St. Anthony's Health
Center – Altamont
3 Do It Drive, Altamont
217-540-2337
- Center for Pediatric Therapy
904 Medical Park Dr., Effingham
217-347-1685

InLine Physical Therapy
Christy Baker, PT
102 Greenview Dr, Effingham
217-708-5131
305B E. Cumberland Rd, Altamont
618-881-0909

Meraki Health
101 S. Linden St., Effingham
618-783-7529
ProRehab Physical & Occupational
Therapy

1302 Ave. of Mid-America, Suite 4,
Effingham
217-606-3004

Rehabilitation & Performance
Institute Effingham
1301 W. Evergreen Ave., #1A,
Effingham
217-690-4882

LABORATORY & DIAGNOSTIC SERVICES

HSHS St. Anthony's Diagnostic &
Health Centers:

- 900 W. Temple Ave., Bldg. B,
Suile 1100, Effingham
217-347-1267
- 3 Do It Drive, Altamont
217-540-2345
- 206 N. Pearl St., Teutopolis
217-857-6146
- 101 Coles Centre Drive, Ste. 101,
Mattoon
217-540-2300

SBL Bonutti Clinic
Laboratory Services:

1303 W. Evergreen Ave, Ste. 101,
Effingham
1-877-796-LABS (5227)

Diagnostic Services:
X-Ray, MRI, Ultrasound, CT,
Mammography
1303 W. Evergreen Ave, Ste. 102,
Effingham
217-540-6123

Diagnostic Services: X-Ray, EKG
Family Care Associates
1106 N. Merchant St., Effingham
217-342-7000

PHYSICIANS & SURGEONS (Listed by their specialty field)

DERMATOLOGY

Springfield Clinic Effingham
Dermatology
Lana Schmidt, MD
Frances Deadmond, PA-C
Elizabeth Meinhart, APRN, CNP
Jody Schumacher, APRN, CNP
Kathleen Weber, APRN, CNP
801 W. Temple Ave., Effingham
217-342-4151

FAMILY PRACTICE

Dr. Narinder Arora
401 N. Mulberry St., Effingham
217-347-0768

Dr. Navi Arora
401 N. Mulberry St., Effingham
217-347-0768

Michelle Braddy, MD
Jennifer Kistner, APRN
Mackenzie Buzzard, APRN
HSHS Medical Group Family
Medicine – Dieterich
207 S. Main St., Dieterich
217-925-5730

Jackson Health, PLLC
Stephanie Jackson, APRN
900 W. Temple Ave., Building A,
Ste. 203, Effingham
217-660-4600

Cornerstone, DPC
Dr. Scott Sieberg, MD
1901 S. Fourth St., Ste. 27, Effingham
217-809-0771

Jeffrey Brummer, D.O.
1106 N. Merchant St., Effingham
217-342-7000

Jeffrey Crowell, MD
1106 N. Merchant St., Effingham
217-342-7000

Lance Workman, MD
1106 N. Merchant St., Effingham
217-342-7000

Sean Flynn, MD
Kendra Zerrusen, APRN
Katie Koester, APRN
Jeffrey Jenson, MD
SBL Effingham Clinic
905 N. Maple St., Effingham
217-347-7030
Paul Oltman, OD
217-347-7776

Katie Klosterman, MD
Margo McMahon, APRN
Megan Steffen, APRN
SBL Bonutti Clinic
1303 W. Evergreen, Ste. 202,
Effingham
217-540-6122

Robert Frost, MD
Tammy Sasse, APRN
Kathi Vaughn, APRN
Mackenzie Buzzard, APRN
HSHS Medical Group Family
Medicine - Altamont
3 Do It Drive, Altamont
618-483-6131



HSHS Internal Medicine – Effingham
Bashar Alzahabi, MD
900 W. Temple Ave. Bldg B., Ste.
1500, Effingham
217-347-0458

Dominic Imburgia, MD
901 N. Maple St., Effingham
217-347-2900

Bernie Rancho, MD
Stacey Tebbe, APRN
HSHS Medical Group
Multispecialty Care – Mattoon
101 Coles Centre Drive, Ste. 100,
Mattoon
217-234-5110

Fred Richardson Jr., MD
904 Medical Park Drive, Effingham
217-540-2350

Eric Bloemer, MD
206 N. Pearl, Teutopolis
217-857-6481

John Opilka, D.O.
Randi Berg, APRN
Kim Burgess, APRN
Heather Forsys, APRN
SBL Altamont Medical Center
5 E. Cumberland Rd., Altamont
618-483-6151

Richelle Volk, APN-FNP
Candi Estes, APN-FNP
Lori Johnson, DNP-FNP
Sarah Vaughn, APN-FNP
Beth Schumacher, CPNP
Jeemin “Sue” Eversole, AFNP
1106 N. Merchant St., Effingham
217-342-7000

Gentle Care Consultants LLC
Shelly Kuhns, APRN-FPA, CCNS
602 W. Franklin Ave., Effingham
217-342-6677

FOOT SPECIALIST

James C. Graham, D.P.M.
900 W. Temple Ave., Ste. 202,
Effingham
217-342-2040

INTERNAL MEDICINE

Bashar Alzahabi, MD
Internal Medicine & Nephrology
900 W. Temple Ave., Ste. 103, Effingham
217-347-5000

Narinder Arora, MD
401 N. Mulberry St., Effingham
217-347-0768

Jeffrey K. Brummer, D.O.
1106 N. Merchant St., Effingham
217-342-7000

Thomas Heischmidt, MD
1106 N. Merchant St., Effingham
217-342-7000

Springfield Clinic Effingham
David Kowalski, MD
Jennifer Maneja, MD
Tina Rozene, MD, FAAP
Vickie Bushur, APRN, CNP
Kristina Schnepfer, APRN, CNP
300 N. Maple St, Effingham
217-342-4151

Louis Schwing, MD - Ste. 200
Megan Steffen, APRN - Ste. 202
SBL Bonutti Clinic, 1303 W.
Evergreen Ave., Effingham
217-540-6122

NEPHROLOGY

Bashar Alzahabi, MD
900 W. Temple Ave., Ste. 103, Effingham
217-347-5000

NEUROLOGY

SBL Evergreen Clinic
Belen Lawless, MD
1104 W. Evergreen Ave., Effingham
217-258-4096

OBSTETRICS & GYNECOLOGY

Effingham Obstetrics &
Gynecology Associates, PLLC
Jennifer Dust, MD
Julie Brasel, CNM
Kelly Haller, MD
Abbie Massengill, MD
Stefani Beverlin, PA-C
Stephanie Gordon, CNM
Bailey Notzke, WHNP
912 N. Henrietta St., Effingham
217-342-3337
Effinghamobgyn.com

ORAL & MAXILLOFACIAL SURGEONS

Center for Jaw & Facial Surgery
Jay Swanson, DDS, MD
2301 Hoffman Drive, Effingham
217-342-4444
jayswansondds.com

Central Illinois Oral &
Maxillofacial Surgery
100 Greenview Drive., Ste. B, Effingham
Thomas Fonner, DMD
217-540-5348
centralillinoisoral.com

MEDICAL ONCOLOGY & HEMATOLOGY

Philip A. Dy, MD
Crossroads Cancer Care Center
905 Medical Park Drive, Effingham
217-342-2066
cancercarespecialists.org

Kaylee M Beals, DNP, FNP-BC
Crossroads Cancer Care Center
905 Medical Park Drive, Effingham
217-342-2066
cancercarespecialists.org

Hanna M Saba, MD
Crossroads Cancer Care Center
905 Medical Park Drive, Effingham
217-342-2066
cancercarespecialists.org

Shannon E. Niebrugge, FNP-BC
Crossroads Cancer Care Center
905 Medical Park Drive, Effingham
217-342-2066
cancercarespecialists.org

Rachel I. Kline, FNP-C
Crossroads Cancer Care Center
905 Medical Park Drive, Effingham
217-342-2066
cancercarespecialists.org

MENTAL HEALTH

L.J. Welsh, LCPC
SBL Evergreen Clinic
1104 W. Evergreen Ave., Effingham
217-258-4040

Rebecca Holkenbrink, LCPC
Kari Thompson, RPT-S, LCPC
Molly Ledbetter, LCPC
Ashley Kreke, LCPC, RPT
1106 N. Merchant St., Effingham
217-342-7000

The Wellness Loft
Amy Schmidt, MS, LCPC
Heather Latta, LCSW
Michelle Schultz, MS, LCPC
Patti Hampsten, LCPC
Julie Short, LCSW
Sydney Barnes, LCSW
Kelsey Deadmond, LPC
408 S. Fourth St., Effingham
217-347-5118

New Light Counseling
Kimi Dust, MS, Ed. LCPC
Jennifer Mosier, MS, LCPC
Angi Ullrich, MA, LCPC
Jason Givens MS, Ed
Kyle Boewe, BA Mental Health
Counselor
Kearsten Givens, BS Mental Health
Counselor
1300 S. Raney St, Ste. 2, Effingham
217-342-7155
Newlightcounseling.org

Julie's Counseling
Julie Roedel, LCPC
1901 S. Fourth St, Ste. 7, Effingham
217-821-2876

Griffin Therapeutic Solutions
405 S. Third St, Effingham
217-994-9056

Diel Counseling Inc
Patricia Diel, LMSW, CADC, SAP
612 S. Willow St., Effingham
217-259-2688

Heartland Human Services
1200 N. Fourth St, Effingham
217-347-7179

Crossroads Counseling &
Consultation, PLLC
Jonathan Kabbes, Ph.D. (ABD),
LCPC, BC-TMH, CCTP
702B N. Keller Dr, Effingham
217-994-1074
Crossroadsemhc.com

Midwest Neurofitness
1901 S. Fourth St, Ste. 201, Effingham
217-342-6963

Wright Choice Counseling
618-699-8874
988 Suicide and Crisis Lifeline
1901 S. Fourth St, Ste. 236, Effingham
1485 N. Carlyle Rd., Vandalia
Kaitlyn Eade, NCC, LPC
Katrina Schoenfeld, LMSW
Jordan Tanner, LPC (pending LCPC)
Jessica Wright, LCSW (in
Effingham by appt only)

Caring for you in Effingham.



David Kowalski,
MD
Internal Medicine
& Pediatrics



Jennifer Maneja,
MD
Internal Medicine



Jason McAllaster,
DO
General Surgery



Tina Rozene,
MD, FAAP
Internal Medicine
& Pediatrics



Lana Schmidt,
MD
Dermatology

Springfieldclinic



Springfield Clinic
Effingham
300 North Maple Street,
Effingham, IL



Springfield Clinic
Effingham Dermatology
801 West Temple Avenue
Effingham, IL

217.342.4151 • 800.444.7541

HSHS Medical Group
Susan LaMonica, APRN
Chancie Warren, APRN
900 W. Temple Ave, Bldg B, Ste
1500, Effingham
217-347-0458
HSHSMedicalGroup.org

Evolve Counseling
612 S. Willow St., Effingham
217-347-7384

Semple Solutions Counseling &
Consulting
710 W. Jefferson, Effingham
203 S. Main St., Dieterich
217-994-4734

Stephanie Flier, LCSW
Springfield Clinic
300 N. Maple St., Effingham
217-342-4151

Calming the Cortex Counseling
Beth Stundon, LCSW, SSW, MSW
204 N. Banker St., Effingham
217-663-3072

PODIATRY

Charles Kind, DPM
Lauren Kind, DPM
SBL Bonutti Clinic
1303 W. Evergreen Ave., Ste. 201
Effingham
217-238-3435

PLASTIC SURGERY

Dean Page, MD
HSHS Medical Group
Multispecialty Care – Effingham
900 W. Temple, Bldg. B, Ste. 2500
217-540-2350

RADIATION ONCOLOGY

Casey E. Duncan, MD
Crossroads Cancer Care Center
905 Medical Park Drive, Effingham
217-342-2066
cancercarespecialists.org

Seong R Cho, MD
Crossroads Cancer Care Center
905 Medical Park Drive, Effingham
217-342-2066
cancercarespecialists.org

ORTHOPEDICS

Dr. Zane Qureshi, DPM
Dr. Kevin Hsu, DPM
HSHS Medical Group
Foot & Ankle Specialists –
Effingham
900 W. Temple Ave., Bldg. B, Ste.
2200, Effingham
217-342-0578

SBL Bonutti Clinic
1303 W. Evergreen Ave., Ste. 200,
Effingham
217-342-3400

- Joseph Ajdinovich, MD
- Shelbi Birch, APRN
- Peter Bonutti, MD
- Stacia Dennison, APRN
- Kayla Deters, APRN
- Daniel Fishel, DO
- Timothy Gray, MD

- Evan Hakman, PA-C
 - Jennifer Hess, APRN
 - Frank Lee, MD
 - M. Saad Malik, MD
 - Nick Watkins, PA-C
 - Nick Williams, PA-C
- Occupational Medicine:
- Stacia Dennison, APRN
 - Jennifer Hess, APRN
 - Louis E. Schwing, MD
 - Nick Watkins, PA-C

ORTHOTIC & PROSTHETIC SERVICES

Bryan King, Orthotist & Prosthetist
2600 S. Raney St., Effingham
217-342-3412, ext 5109

New Horizons Orthotic &
Prosthetic Services – Effingham
Andrew Sparks, CPO
Erin Jansen, CPO
606 S. Fourth St., Effingham
217-690-4607
After hours call:
308-380-5780 or 217-690-4608
NewHorizonsOandP.com

OTOLARYNGOLOGY (Ear, Nose, Throat)

Midwest Sinus, Sleep & Allergy
Associates
500 N. Maple St., Effingham
618-816-0715

SBL Effingham Clinic
ENT Clinic
905 N. Maple St.
217-347-7077
Michael Smith, MD

PEDIATRICS

(Infant & Child Care)

Beth Schumacher, Pediatric Nurse
Practitioner
1106 N. Merchant St., Effingham
217-342-7000

William L Eckstein, MD, FAAP
Central Illinois Pediatrics
900 W Temple Ave., Ste. 203
Effingham
217-342-5405

Thomas Heischmidt, MD
1106 N. Merchant St., Effingham
217-342-7000

Springfield Clinic Effingham
David Kowalski, MD
Tina Rozene, MD, FAAP
300 N. Maple St., Effingham
217-342-4151

Amanda Bierman, MD
1106 N. Merchant St., Effingham
217-342-7000

Sean Flynn, MD
905 N. Maple, Ste. D, Effingham
217-347-7030

Cari Fearday, PA-C
Abby Welsh, MD
Emily Kreke, PA-C
SBL Bonutti Clinic
1303 W. Evergreen Ave., Ste. 203,
Effingham
217-540-6122

Jordyn (Huston) Kreke, MD
(starting August 2026)
1106 N. Merchant St., Effingham
217-342-7000

PHYSICAL MEDICINE & REHABILITATION

Rehabilitation & Performance
Institute, PSC
1301 W Evergreen Ave., #1A, Effingham
217-690-4882

SBL Bonutti Clinic
1303 W. Evergreen Ave., Ste. 103,
Effingham
217-342-3400

Effingham Pelvic Health & Wellness
Physical Therapy, Pelvic Health &
Pre/Postpartum Care
101 W. Evergreen Ave., Effingham
217-705-5077
effinghampelvichealth.com

ProRehab Physical Therapy
1302 Avenue of Mid-America, Ste.
4, Effingham
Phone: 217-606-3004

HSHS St. Anthony's Physical
Rehabilitation and Wellness

- Workman Sports & Wellness
Complex
1301 N. Maple St., Effingham
217-347-1243

- HSHS St. Anthony's Health
Center – Altamont
3 Do It Drive, Altamont
217-540-2337
- Center for Pediatric Therapy
904 Medical Park Dr., Effingham
217-347-1685

Evergreen Nursing & Rehab Center
115 N. Wenthe Drive, Effingham
217-347-7121

Lakeland Rehabilitation and Health
Care Center
800 W. Temple Ave., Effingham
217-342-2171

SURGERY (GENERAL)

SBL Evergreen Clinic
1104 W. Evergreen Ave., Effingham
217-347-2500

- Kevin Malone, MD, FACS
- James Flaig, D.O., FACOS

Ruben Boyajian, MD FACS
HSHS Medical Group
Specializing in Comprehensive
Breast Care
900 W. Temple Ave., Building B,
Second Floor, Ste. 2500, HSHS
St. Anthony's Health Center,
Effingham
217-347-2255
rboyajianmd.com

Springfield Clinic Effingham
Jason McAllister, DO
300 N. Maple St, Effingham
217-342-4151

SURGERY (HAND)

Frank S. Lee, MD, FAAOS
SBL Bonutti Clinic
1303 W. Evergreen Ave., Ste. 200
217-342-3400

SBL Southern Illinois Hand Center
901 Medical Park Dr, Ste. 100,
Effingham
217-347-3003

- Nash H Naam, MD, FACS
- Lisa M Sasso, MD, FAAOS
- Patrick Stewart, MD, FACS
sarabhush.org/SIHC/

UROLOGY

P. Dharmadev L. Nayak, MD
Angela Yocom, APRN
Emily Konrad, APRN
HSHS Medical Group Urology –
Effingham
414 W. Virginia Ave., Effingham
217-342-9738

Jody Bierman, APRN
SBL Effingham Clinic
905 N. Maple
217-258-4186

VEIN THERAPY & MEDICAL AESTHETICS

Dr. Jason McAllister
Boho Chic Clinique
204 W. Washington Ave., Ste. 103,
Effingham
217-347-2646

WEIGHT MANAGEMENT

Dr. Navi Arora, MD
401 N. Mulberry St., Effingham
217-347-0768

PHARMACIES

Andes Health Mart Pharmacy
805 W. Fayette Ave., Effingham
217-342-9393

Kirby HealthMart Pharmacy
Effingham
101 S. Merchant St., Effingham
217-342-4301

Brown's Drug Store
115 W. Jefferson Ave., Effingham
217-342-2185

Walgreens Pharmacy
1200 W. Fayette Ave., Effingham
217-342-6075

Walmart Pharmacy
1204 Avenue of Mid America,
Effingham
217-347-5583

- Kremer Pharmacy
- 206A N. Pearl St., Teutopolis
217-857-3000
 - 12 N. Third St., Altamont
618-483-5100

RISE Effingham
1011 Ford Ave., Ste. C, Effingham
217-727-7715

SARAH BUSH LINCOLN CLINICS AND SERVICES - EFFINGHAM

ALTAMONT MEDICAL CENTER

5 E. Cumberland Rd.
Altamont, IL 62411
618-483-6151

- **Physical and Occupational Therapy**
15 North Main St.
Altamont, IL 62411
618-881-0920

AUDIOLOGY & HEARING AID SERVICES

SBL Effingham Clinic
905 North Maple
217-347-7077

BONUTTI CLINIC

1303 W. Evergreen Ave.
Effingham, IL 62401

- **Cardiology - Ste. 201**
– Mohammad Al-Akchar, MD
– Cory Hess, ACNP
– Adham Karim, MD
– Monica Scott, APRN
217-238-4960
- **Diagnostic Imaging - Ste. 102**
217-540-6123
- **Family Medicine - Ste. 203**
– Katie Klosterman, MD
– Margo McMahan, APRN
– Megan Steffen, APRN
- **Internal Medicine - Ste. 200**
– Louis Schwing, MD
Ste. 200
- **Laboratory Services - Ste. 101**
1-877-796-LABS (5227)
- **Occupational Medicine - Ste. 200**
– Stacia Dennison, APRN
– Jennifer Hess, APRN

– Louis Schwing, MD
– Nick Watkins, PA-C
217-342-3400

- **Orthopedics - Ste. 200**
217-342-3400
– Joseph Ajdinovich, MD
– Shelbi Birch, APRN
– Peter Bonutti, MD
– Stacia Dennison, APRN
– Kayla Deters, APRN
– Daniel Fishel, DO
– Timothy Gray, MD
– Evan Hakman, PA-C
– Jennifer Hess, APRN
– Frank Lee, MD
– Nick Watkins, PA-C
– Nick Williams, PA-C

- **Pediatrics - Ste. 203**
– Cari Fearday, PA-C
– Emily Kreke, PA-C
– Abby Welsh, MD
217-540-6122

- **Physical and Occupational Therapy - Ste. 103**
217-342-3444

- **Walk-In Clinic - Ste. 100**
217-540-6123

CARDIOLOGY

SBL Bonutti Clinic
1303 W. Evergreen Ave., Ste. 202
Effingham, IL 62401
– Mohammad Al-Akchar, MD
– Cory Hess, ACNP
– Adham Karim, MD
– Monica Scott, APRN
217-238-4960

Diagnostic Services

SBL Bonutti Clinic
1303 W. Evergreen Ave., Ste. 102

Effingham, IL 62401
217-258-2588
*X-Ray, MRI, Ultrasound, CT,
Mammography*

Family Care Associates
1106 N. Merchant St.
Effingham, IL 62401
217-342-7116
X-Ray, EKG

EFFINGHAM CLINIC

905 North Maple
Effingham, IL 62401

- **ENT Clinic**
- **Audiology & Hearing Services**
217-347-7077
- **Family Medicine**
Paul Oltman, MD
Kendra Zerrusen
217-347-7776
Sean Flynn
Jeffrey Jenson, MD
Katie Koester, APRN
217-347-7030

ENDOCRINOLOGY

SBL Evergreen Clinic
1104 W. Evergreen Ave.
Effingham, IL 62401
– Hannah Dukeman, APRN
217-234-7000

ENT CLINIC

SBL Effingham Clinic
905 N. Maple
217-347-7077
– Charly Nguyen, MD
– Michael Smith, MD

FAMILY MEDICINE

SBL Effingham Clinic
905 N. Maple
Effingham, IL 62401
– Paul Oltman, MD
– Kendra Zerrusen
217-347-7776
– Sean Flynn
– Jeffrey Jenson, MD
– Katie Koester, APRN
217-347-7030

SBL Home Medical Equipment

903 N. Maple St.
Effingham, IL 62401
1-800-345-3191
217-347-7372

SBL Hospice

SBL Effingham Clinic
905 N. Maple
Effingham, IL 62401
1-800-454-4055
217-238-6160

INTERNAL MEDICINE

SBL Bonutti Clinic
1303 W. Evergreen Ave.
Effingham, IL 62401
– Louis Schwing, MD - Ste. 200
217-540-6122

SBL Interventional Pain Management

SBL Medical Park Plaza
901 Medical Park Drive, Ste. 200
Effingham, IL 62401
217-347-2332
– Anthony Guarino, MD
– Lynn Potter, APRN

Laboratory Services

SBL Bonutti Clinic
1303 W. Evergreen Ave., Ste. 101
Effingham, IL 62401
1-877-796-LABS (5227)

SBL Occupational Medicine

SBL Bonutti Clinic
1303 W. Evergreen Ave., Ste. 200
217-342-3400
– Stacia Dennison, APRN
– Jennifer Hess, APRN
– Louis Schwing, MD
– Nick Watkins, PA-C

Pediatrics

SBL Bonutti Clinic
1303 W. Evergreen Ave., Ste. 203
Effingham, IL 62401
217-540-6122
– Cari Fearday, PA-C
– Emily Kreke, PA-C
– Abby Welsh, MD

Physical and Occupational Therapy

Altamont Medical Center
15 North Main St.
618-881-0919

SBL Bonutti Clinic
1303 W. Evergreen Ave., Ste. 103
Effingham, IL 62401
217-342-3444

SBL Southern Illinois Hand Center

SBL Medical Park Plaza
901 Medical Park Drive, Ste. 100
Effingham, IL 62401
217-347-3003
– Nash Naam, MD
– Lisa Sasso, MD
– Patrick Stewart, MD

SBL Walk-In Clinic

SBL Bonutti Clinic
1303 W. Evergreen Ave., Ste. 100
Effingham, IL 62401
217-540-6123

PODIATRY

SBL Bonutti Clinic
Charles Kind, DPM
Lauren Kind, DPM
1303 W. Evergreen Ave., Ste. 201
Effingham
217-238-3435

SURGERY

SBL Evergreen Clinic

1104 W. Evergreen Ave.
Effingham, IL 62401
217-347-2500

General Surgery

– James Flaig, DO
– Kevin Malone, MD



HSHS ST. ANTHONY'S MEMORIAL HOSPITAL AND HSHS MEDICAL GROUP CLINICS AND SERVICES

HSHS ST. ANTHONY'S

HSHS St. Anthony's Memorial Hospital

503 N. Maple St., Effingham
217-342-2121
stanthonyshospital.org

Convenient Care

900 W. Temple Ave., Bldg. B, Ste.
1100, Effingham
217-347-1690
stanthonyshospital.org/
convenientcare

Center for Interventional Pain Management

503 N. Maple St., Effingham
217-347-6702
stanthonyshospital.org/pain

Physical Rehabilitation and Wellness

- Workman Sports & Wellness Complex
1301 N. Maple St., Effingham
217-347-1243

- HSHS St. Anthony's Health Center – Altamont
3 Do It Drive, Altamont
217-540-2337
- Center for Pediatric Therapy,
904 Medical Park Drive,
Effingham
217-347-1685

Women's Wellness Center

900 W. Temple Ave., Bldg. B, Ste.
2100, Effingham
217-347-1601
stanthonyshospital.org/WWC

Wound Healing Center

503 N. Maple St., Effingham
217-347-3565

Diagnostic & Health Centers

- *HSHS St. Anthony's Health Center - Effingham*
900 W. Temple Ave., Bldg. B, Ste.
1100, Effingham
217-347-1267
- *HSHS St. Anthony's Health Center - Altamont*

- 3 Do It Drive, Altamont
217-540-2345
 - *HSHS St. Anthony's Diagnostic Center - Newton*
601 W. Washington St., Newton
618-783-5707
 - *HSHS St. Anthony's Diagnostic Center - Teutopolis*
206 N. Pearl St., Teutopolis
217-857-6146
 - *HSHS St. Anthony's Multispecialty Clinic - Mattoon*
101 Coles Centre Drive, Ste. 101,
Mattoon
217-540-2300
- Diagnostic Centers can offer:
Mammography, Open MRI,
X-Ray, EKGs, Lab Testing,
Ultrasound, Bone Density, and
Point of Care Testing. Services
vary at locations.
- Health Centers may offer:
Physical Therapy and Nutritional
Services.

HSHS Home Care & Hospice

900 W. Temple Ave. Bldg. A, Ste.
101, Effingham
800-551-6566
HSHSHomeCare.org

Prairie Cardiovascular

503 N. Maple St., Effingham
217-342-3700
hshs.org/heart

- Masoor Kamalesh, MD
- Jessica Prange, MD
- Sheri Barnett, APRN
- Diana Dragnea, DMSc, PA-C

HSHS MEDICAL GROUP

HSHS Medical Group

Multispecialty Care - Effingham

900 W. Temple Ave., Bldg. B, Ste.
2500, Effingham
217-540-2350

- HSHSMedicalGroup.org
- Thomas Ambrose II, MD,
Orthopedic Surgeon
 - Ruben Boyajian, MD,
General Surgery
 - Sarah Coe, MD, General Surgery
 - Nitin Kumar, MD,
Gastroenterology
 - Wendy Lim, MD, General
Surgery
 - Dean Page, MD, Plastic Surgery
 - Eduardo Vaca, MD, General
Surgery

HSHS Medical Group Family

and Internal Medicine -

Effingham

- 900 W. Temple Ave. Bldg. B., Ste.
1500, Effingham
217-347-0458
HSHSMedicalGroup.org
- Bashar Alzahabi, MD, Internal
Medicine and Nephrology
 - Andrew Gage, MD,
Family Medicine

- Stephanie Jackson, APRN,
Family Medicine
- Susan LaMonica, APRN,
Mental Health
- Lauren Lustig, APRN,
Family Medicine
- Andrew Poulos, MD,
Family Medicine
- Amanda Stroud, APRN,
Family Medicine
- Chancie Warren, APRN, Mental
Health

HSHS Medical Group Diabetes and Endocrinology

500 N. Maple St., Ste. 200,
Effingham
217-391-5454
HSHSMedicalGroup.org/diabetes

- Radhika Annam, MD
- Tracy Dennis, RD
- Adrienne Jarrell, RD

HSHS Medical Group Urology - Effingham

414 W. Virginia Ave., Effingham
217-342-9738
HSHSMedicalGroup.org

- P. Dharmadev L. Nayak, MD
- Angela Yocom, APRN
- Emily Konrad, APRN

HSHS Medical Group Occupational Health and LeadWell

2611 S. Banker St., Effingham
217-347-3303
HSHSMedicalGroup.org

HSHS Medical Group Foot and Ankle Specialists

Dr. Zane Qureshi, DPM
Dr. Kevin Hsu, DPM
900 W. Temple Ave., Bldg. B, Suite
2200, Effingham
217-342-0578

HSHS Medical Group Family Medicine - Altamont

3 Do It Drive, Altamont
618-483-6131
HSHSMedicalGroup.org

- Robert Frost, MD
- Tammy Sasse, APRN
- Kathi Vaughn, APRN
- Mackenzie Buzzard, APRN

HSHS Medical Group Family Medicine - Dieterich

207 S. Main St., Dieterich
217-925-5730
HSHSMedicalGroup.org

- Michelle Braddy, MD
- Jennifer Kistner, APRN
- Mackenzie Buzzard, APRN

HSHS Medical Group Multispecialty Care - Mattoon

101 Coles Centre Drive, Ste. 100,
Mattoon
217-234-5110
HSHSMedicalGroup.org

- Bernie Rancho, MD
- Stacey Tebbe, APRN



PARKS & RECREATION

The Effingham Park District is located at 1906 S. Fourth St. in Effingham. It offers a wide variety of recreational activities and facilities for the entire family. Major facilities include an outdoor swimming pool, a recreation center complex, playground, and picnic areas, 12 lighted tennis courts, 11 ball diamonds, 10 of which are lighted, 8 lighted pickleball courts and an 18-hole disc golf course. Call 217-342-4415.

Community Park is located on East Temple Avenue in Effingham and is 35 acres in size. It has 5 ball diamonds, 2 outdoor basketball courts, an 18-hole disc golf course, 4 tennis courts, an outdoor skating rink, plus playground and picnic areas.

Hendelmeyer Park is located at 1906 S. Fourth St. in Effingham. It is a 20-acre park that includes a recreation complex that houses two gyms, two meeting facilities, a kitchen, a facility for theatre production with stage area and the Park District offices. The park also includes two lighted softball diamonds, one lighted fast pitch diamond, eight lighted pickleball courts, two playground/picnic areas and a skate park.

Evergreen Hollow is located at 1110 Pelican St. in Effingham. It has 42 acres. The public swimming pool is located there, as are four tennis courts, lighted baseball/softball diamonds, flag football and soccer fields, picnic areas, playground area and tree walk. Recreation programs for youth and adults are provided throughout the year by the park district. Further information about the park district or the local parks can be obtained by calling 217-342-4415 and online at effinghamparkdistrict.org

Bliss Park is a cozy block-sized park located at 201 W. Clark Ave. in Effingham. It has a play area, shaded picnic area, two shelters and an outdoor basketball court.

Harmony Playground is located at 1301 N. Maple St. in Effingham. and is a new playground that accommodates those with disabilities, to provide all children the same outdoor play opportunities.

Lake Sara, located just five miles northwest of Effingham, is a 650-acre lake that provides 27 beautiful miles of shore line and one of the finest family recreation facilities in Central Illinois. Among the features are a public beach, cabins, 18-hole golf course next to Lake Sara and camping and picnic areas. The area also offers fisherman a great opportunity to “land the big one”, noted for its black bass, white bass, crappie, bluegill and channel catfish. For more information, call 217-868-2964.

New to Lake Sara is a launch site for kayaks and canoes. It is located on the west end of the lake. There is also a fishing area for the handicapped. It is located at the east end of the lake. There are special unloading ramps down to the water with safety rails. There are also picnic benches

in the area. There is a Bocce Ball Court just west of the playground near the ADA all access nine-hole and four-hole Disc Golf Course. New to Lake Sara are four Pickleball Courts, Outdoor Exercise Machines, a Fitness Challenge Course, half-mile walking trail and a beach volleyball court. The newest addition to Lake Sara Beach is the StoryWalk, a trail that includes pages from a book. Approximately every month, the Effingham Public Library will put pages from different books along the StoryWalk so visitors will have a new book to read along the trail. The pages are laminated in frames on top of each post and is ADA compliant and installed at a height that allows smaller children to see each page of the book.

Lake Sara has two marinas: The Reel Marina and Lakeside Marina, where gas is sold and boats are available to rent. The Reel Marina is located at 8724 E. Marina Drive, and there is a bar on the Reel Marina called The Rusty Reel, whose number is 217-868-2791. There is a restaurant here called Pinky's whose number is 217-868-BOAT (2628). Lakeside Marina is located at 14839 Park Road. More information can be obtained by calling 217-500-1903. Lake Sara Campground provides sites for campers. For more information, call 217-868-2964.

Camp Lakewood is located at 1217 W Rickelman Ave, Effingham. It is an RV Park and Campground ideally located on the shores of Lake Pauline. For further information, call 217-342-6233

Effingham Country Club is located on 2400 W Country Club Drive in Effingham. In addition to an 18-hole private golf course, it provides a driving range, swimming pool, fishing and dining facilities for its members. The course is open from 8 a.m. to 7 p.m. from the first of March until November 30th. Both pull carts and

riding carts are available, as well as a pro shop. More information can be obtained by calling 217-347-0423.

Cardinal Golf Course is an 18-hole public golf course located approximately two miles northwest of Effingham in the Lake Sara area. It is open seven days a week from 7 a.m. to dusk from March through the end of December. Both pull carts and riding carts are available, as is a driving range. For more information, call 217-868-2860.

Fore-Way Challenge Golf & Driving Range is located at 16041 N. 1000th St. (near Lake Sara). It is a USGA accredited 9-hole public golf course with a driving range. The course is open seven days a week from 7 a.m. to 8:30 p.m. Please call 217-868-5418 for further information or go to forewaygolfcourse.com.

Effingham Mini Golf is located at 1202 N. Maple St. near the public pool. It is an 18-hole, safari-themed golf course with a concession stand. This family-friendly course is open Monday through Thursday Noon-8 p.m., Friday and Saturday Noon-9 p.m., and Sunday Noon-6 p.m. More information can be found on their Facebook page Effingham Mini Golf.

Pagel's Silver Dollar Lanes is located at 2300 S. Banker and is equipped with 24 lanes. Individual bowling, as well as league (winter and summer) bowling is offered. Bumper bowling for children is also available. Fall/winter hours: Open 3pm on Sunday and Monday. Open Tues. at Noon, Wed., Thurs. & Fri. at 3pm; Open Sat. at Noon; Open 3 p.m. Thursday through Sunday during the summer. There is also a bar and game room, which includes two pool tables. For further information, go to silverdollarlanes.com or call 217-342-3939.



Evergreen Bark Park is a beautiful one+ acre dog park providing owners and their four-legged friends the room to get some extra steps in and run. Owners will have the option of releasing their dogs within either a large or small dog section which is now open. Both sections will be fenced and double-gated with entry corrals, so dogs can be let off leash before entering the park. ADA accessible walkways will be provided throughout the park. A pavilion, shade structures, benches, waste stations, and human water fountains with a dog-level water bowl and spout are included on the future plans for the park property. There will also be a rinsing station to clean up your canine before putting him/her in your vehicle.

Effingham County Museum
100 E. Jefferson Ave,
Effingham
217-663-0821, leave a message
Presently open Tuesdays and
Saturdays 10 a.m.–2 p.m. by
appointment
effinghamcountymuseum.org

Monastery Museum
110 S. Garrett St, Teutopolis
First Sunday of the month, April
thru November except holidays.
The hours are from
12:30 to 4 p.m.
217-961-6404 ext. 236
stfrancischurch.com

Ballard Nature Center
5253 E. US 40, Altamont
618-483-6856
Trails open daily

Winter hours: Tuesday-Friday
8 a.m. - 4 p.m.,
Saturday noon - 4 p.m.
Summer hours: Monday-Friday
8 a.m. - 4 p.m., Saturday noon - 4
p.m., Sunday 1 p.m. - 4 p.m.
ballardnaturecenter.org

Dr. Charles M. Wright House
3 W. Jackson Ave, Altamont, IL
62411

Open every Sunday 2:00 to 4:00
p.m. May through September. For
more information or to schedule
tours, please email scott@
wrightmansion.org

Gilbert Park
E. Cumberland Rd, Altamont

Shumway Kluthe Center
199 Front St N/S, Shumway

**Beecher City Area Kluthe
Center**
105 S. Charles St.,
Beecher City
618-487-5401

Watson Civic Center
103 N. Jackson, Watson

Willow Park
806 W Franklin, Watson

Dieterich Memorial Park
203 Park St, Dieterich
217-925-5410
dieterichpark.com

**Dieterich Community Civic
Center**
102 W Virginia, Dieterich
217-925-5410

Effingham Visitor Center
201 E. Jefferson Ave.,
Effingham
217-342-5310
visiteffinghamil.com

HEALTH & FITNESS

The Zone 24 Hour Fitness Center
1208 N. Wenthe Drive, Effingham
217-347-7400

SiemerWorks/CrossFit
1310 S. Banker St., Effingham
217-343-3979

**The Richard E Workman Sports
& Wellness Complex**
1301 N. Maple St., Effingham
217-342-3481

24-Hour Gym
1901 S. Fourth St, Ste. 11,
Effingham
217-342-3333

Evolve Fitness and Climbing
14225 E. 1600th Ave., Effingham
Rickelman Plaza
217-994-9955

The Curl Bar
318 E. Main St., Teutopolis
217-663-6278

Southside Gym
5 Do-It Drive, Altamont
618-483-3260

Level Up Bungee Fitness
400 W. Clark Ave, Ste 106
Effingham
217-690-3346

Planet Fitness
1004 N. Keller Drive, Ste. 1
Effingham
217- 690-4196

Higg's Lifestyle
109 W. Jefferson Ave.
Effingham
217-994-3776

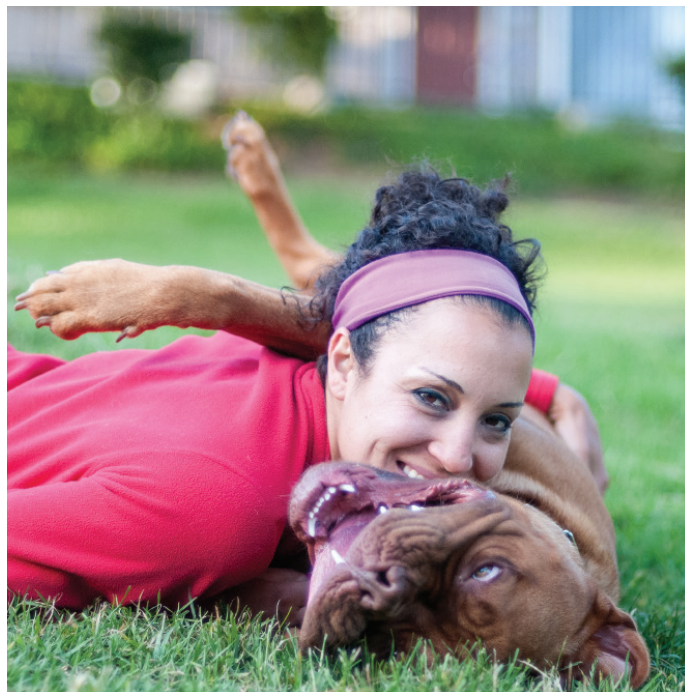
Wright Family Center
206B S. Pine St.
Dieterich
217-925-5554

Flying Buddha Fitness LLC
14225 East 1600th Ave, Ste. B
Effingham
217-821-8351

**Effing Elite Fitness and
Nutrition - 24 Hour**
709 W. Wabash Ave., Effingham
217-493-0767

Mika Yoga Studio
710 W. Jefferson Ave., Effingham
217-690-4898

Lotus Room Yoga
204 W. Washington Ave., Ste. 102,
Effingham
217-994-1453



Johnson FUNERAL HOME

Pre-planning benefits everyone.

It provides peace of mind
for you and your family and
ensures your wishes will be met
within your budget.

Contact us today to learn more.



1110 N. 4th Street
Effingham, IL
217-342-2215

Serving the Effingham Area since 1870

FUNERAL HOMES

Bauer Funeral Home
1212 W. Evergreen Ave.
Effingham
217-342-2177
302 E. Main St., Teutopolis
217-857-3800

Johnson Funeral Home
1110 N. Fourth St.
Effingham
217-342-2215

Gieseking Funeral Home
208 N. Second St.
Altamont
618-483-6821

Pagel Funeral Home
701 Broad St.
Edgewood
618-238-4441

Lockart-Green Funeral Home
Route 33
Beecher City
618-487-5811

Kull Funeral Home
114 W. Washington Ave.
Altamont
618-483-6323

Meyer Funeral Home
307 E. Center (IL RT 33 East)
Dieterich
217-925-5555

CEMETERIES

SHUMWAY

Agney Cemetery
Blue Point Baptist Cemetery
Brown Cemetery
Deichmann Family Cemetery
Faith Lutheran Church Cemetery
Rentfro Cemetery
Saint Mary's Cemetery
Shumway Cemetery
Shumway Methodist Church
Cemetery
Trinity Lutheran Cemetery

ALTAMONT

Altamont Cemetery
Becks Cemetery
Bethlehem Cemetery
Drysedale Cemetery
Freemantown Cemetery
Funkhouser Cemetery
German Methodist Cemetery
Immanuel Lutheran Cemetery
Little Prairie Cemetery
McCoy Cemetery
Miller Chapel Cemetery
Newman Cemetery
New Salem Cemetery
Old Salem Cemetery
Saint Clair Catholic Cemetery

Saint Paul Lutheran Cemetery
Salem United Methodist Church
Cemetery
Union Cemetery
Wallace Cemetery
Zion Lutheran Cemetery

EDGEWOOD

Bailey Cemetery
Beck William Cemetery
Brockett Cemetery
Brown Cemetery
Davidson Cemetery
Edgewood Cemetery
Faulk Cemetery
Kavanaugh Cemetery
Mahon Cemetery
Mason Cemetery
New Hope Cemetery
Old Mason Cemetery
Robinson Cemetery
Wabash Cemetery

BEECHER CITY

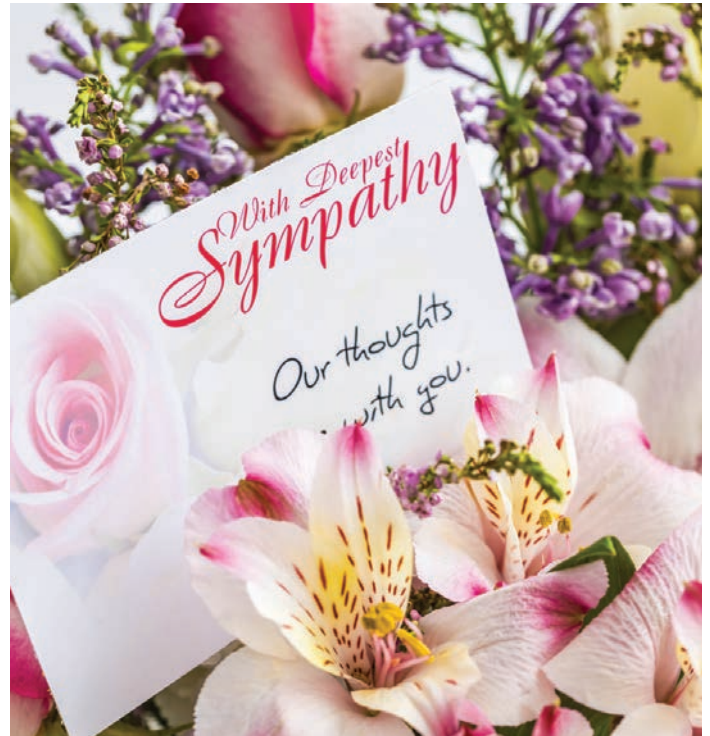
Bartscht Cemetery
Beecher Cemetery
Grubb Cemetery
Hubbart Cemetery
Memorial Gardens Cemetery
Moccasin Cemetery
Pleasant Grove Cemetery
Tipsword Cemetery

DIETERICH

Burk Chapel Cemetery
Dieterich Cemetery
Immaculate Conception Catholic
Cemetery
King Cemetery
Saint John Lutheran Cemetery
Saint Paul Lutheran Cemetery
Stroud Cemetery
St. Aloysius (Bishop) Catholic
Cemetery

EFFINGHAM

St. Anthony Catholic Cemetery
Off Merchant St.
217-347-7129
Oakridge Cemetery
912 E. Jefferson Ave.
217-342-4696
Woodlawn Cemetery
15734 E. State Highway 33
217-857-6085
Arborcrest Memorial Park
On Route 40
Office: 2216 S. Willow St.
217-347-5760 or 217-259-8760
Cohea Family Cemetery
Effingham County Poor Farm
Cemetery
Ewington Cemetery
Immanuel Lutheran Cemetery
Loy Chapel Cemetery
Old Loy Cemetery
Porter Cemetery
Ramsey Cemetery
Rentfro Cemetery
Rinehart Cemetery
Saint John's Lutheran Cemetery



St. Mary's (Green Creek) Cemetery
Toothaker Cemetery
Turner Cemetery
Watson Cemetery

MONTROSE

Montrose Cemetery
Saint Rose of Lima Catholic
Cemetery

TEUTOPOLIS

Saint Francis Cemetery

B

BAUER

FUNERAL HOME

At Bauer Funeral Home, we have proudly served our community with compassion, dignity, and respect for over 90 years. Since 1932, families have trusted us to help them celebrate the lives of their loved ones with personalized and caring service.

Whether you are planning ahead or in a time of need, our experienced staff is here to guide you every step of the way.



Carole Bauer
Owner



Brian Young
Licensed Funeral Director
Licensed Pre-Need
Insurance Agent



Mallory Loker
Licensed Funeral Director
Licensed Pre-Need
Insurance Agent



Eric Althoff
Associate



Ron Will
Associate

1212 W Evergreen Ave. | Effingham | (217) 342-2177

302 E. Main St. | Teutopolis | (217) 857-3800

www.bauerfh.com office@bauerfh.com



Care Focused On You



At **SBL Orthopedics and Podiatry** your care is guided by experienced specialists who listen, explain and support you every step of the way.



Whether your goal is relieving pain, restoring mobility or returning to the activities you love, our team takes a personalized approach to every treatment plan, offering options that range from conservative therapies to advanced surgical care.

Advanced Technologies

CUTTING-EDGE SURGICAL SOLUTIONS

Mako® Robotic-Arm Assisted Surgery

Uses CT-based 3D modeling for personalized, high-precision implant placement, leading to more predictable outcomes and better joint function.

ROSA® Knee System

A robotic assistant utilizing real-time, 3D imaging to help surgeons tailor knee implants precisely to your unique anatomy.

REGENERATIVE MEDICINE

Biologics

Non-surgical, joint-injection treatments designed to restore natural joint surfaces and function rather than replacing them with artificial components.

NON-SURGICAL PAIN RELIEF

lovera®

A drug-free, non-invasive office treatment that uses cold to temporarily freeze nerves, providing up to 90 days of pain relief for knees, hips, shoulders, and ankles.



Trusted Compassionate Experts



Joseph Ajdinovich, MD



Peter Bonutti, MD



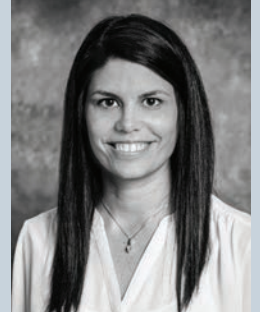
Stacia Dennison, APRN



Timothy Gray, MD



Evan Hakman, PA-C



Jennifer Hess, APRN



Frank Lee, MD



M. Saad Malik, MD



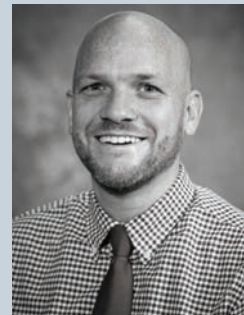
Louis Schwing, MD
Occupational Medicine

Orthopedics, Sports Medicine and Podiatry

SBL Bonutti Clinic • 1303 West Evergreen Ave.
Effingham, IL

Orthopedics – 217-342-3400

Podiatry – 217-238-3435

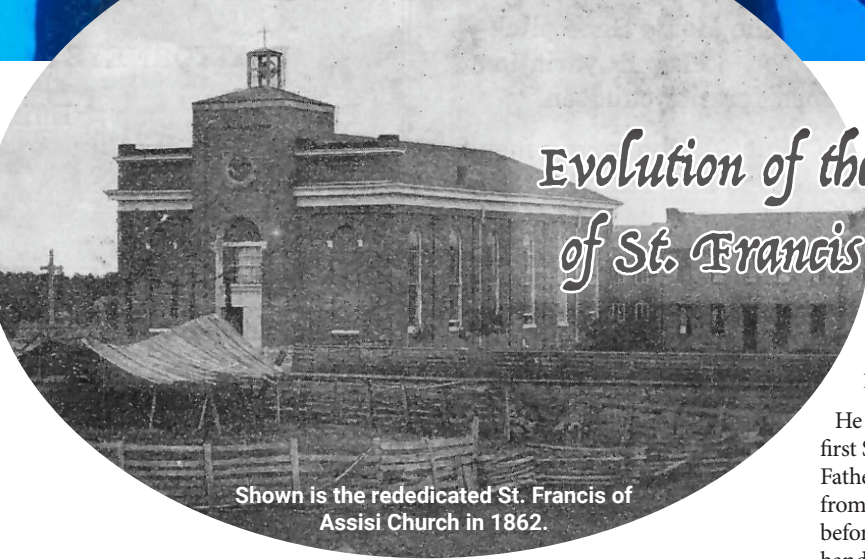


Nick Watkins, PA-C



Nick Williams, PA-C

Evolution of the ART and ARCHITECTURE of St. Francis of Assisi Church in Teutopolis



Shown is the rededicated St. Francis of Assisi Church in 1862.

Teutopolis Catholics with the sacraments on an irregular basis from 1839 to 1842.

He also helped erect the first Catholic church building in Teutopolis. The first St. Peter's Church was a log cabin, perhaps covered with clapboards. Father Masquelet shouldered his broad axe and helped six other men from the community to cut trees somewhere north of town. This was before the era of pinned logs; these hardwood beams were hand-cut, hand-hewn and hand-fitted together near the ends.

The first little church was soon too small, but the Teutopolis Catholics couldn't decide where to put the new one. That decision was made for them by the second Bishop of Chicago, James Oliver Van de Velde. This Bishop was an immigrant from Belgium who was ordained as a Jesuit in 1827. Bishop Van de Velde was familiar with this part of the Midwest because he taught at St. Louis University and later served as its President from 1840 to 1843.

He wisely picked a spot on the National Road (now Route 40), which enhanced the new church's visibility to all who passed by, while also promoting direct and easier access for the parishioners.

The second St. Peter's Church had a Romanesque design — an architectural style that flourished in Europe from the 9th century into the 12th century. It featured thick walls, rounded arches and relatively low ceilings. In Europe, this was the era of the Middle Ages, when life for ordinary people was uncertain due to famine, plague and violence. They saw the church as sanctuary, a place of safety and refuge.

The second St. Peter's cornerstone was placed in 1851. The architect was Casper Nolte, an immigrant who practiced in Effingham County and St. Louis. Construction was slow for several years. The exterior bricks were locally available, but other building materials, like soft wood and chemicals for plaster, were expensive and had to be shipped in. Six years later, the walls were up and had been plastered, but there was no permanent altar.

Progress picked up speed in 1858, when a cadre of immigrant Franciscans from a monastery in Paderhorn Germany came to Teutopolis. In 1860, they rededicated the church and changed its name to that of their founder, St. Francis of Assisi.

An 1862 photograph shows a solid Romanesque structure with a relatively flat roof and a short steeple. There is a residence for the priests and brothers just next door to the church, along with a stock pen for people's cattle across the road from the church.

Although the country was divided by the Civil War, the Franciscans were able to establish St. Joseph's College just south of the church, and it took in

BY LINDA RUHOLL
PHOTOS COURTESY OF EFFINGHAM COUNTY MUSEUM

The Teutopolis pioneers who made up the German Land Company were from the area in Europe that now comprises northwestern Germany.

They were Roman Catholics who left the Old Country in the 1830s, during one of the many periods of unrest in their homeland. They wanted a life where they could safely raise and support a family in peace, while living within the tenets of their religion.

They knew how to work, and they were comfortable with domesticated animals. These were largely rural and small-town residents. Many were farmers, but a minority knew the elements of a trade, which translated into either small-scale retail sales or working with their hands to transform wood, steel, bricks or leather into something useful.

Initially, they set up shop in Cincinnati. Many of the early arrivals stayed there for a few years. They worked, saved money, and in some cases, married and started a family. After a small subgroup chose the area that became Teutopolis and then purchased a

huge acreage, the larger group of pioneers bought land parcels they could afford and moved west. Traveling here from Ohio was slow and difficult. Creating a home on their newly acquired land was even harder.

But through it all, they didn't forget their religious obligations as practicing Catholics. The Church called for Sunday Mass attendance and regular confession. New babies needed baptism by a priest to erase Original Sin. And newborns were sometimes fragile, so the sooner the better. Couples wanting to marry had to have an ordained priest present to witness their wedding vows. Civil marriage was sinful and not a valid marriage for Catholics. On top of all that, these sacraments were supposed to take place in a consecrated church building.

The first priest in Teutopolis was the Rev. Father Joseph Francis Maurice Masquelet. He is generally referred to as Father Maurice because he had relatives nearby who shared his first two given names.

Father Masquelet was born in the Alsace region of France on March 17, 1815, and he immigrated to this country with his family. He provided



This stained-glass window at St. Francis of Assisi Church in Teutopolis depicts the first Nativity creche at Greccio, circa 1220 A.D.

This stained-glass window at St. Francis of Assisi Church in Teutopolis depicts Francis and his love of peace and nature.



students starting in 1862. Just a few years later, these two important sites would be separated by the tracks of the east-west railroad.

Men who could afford it received a classical secondary and post-secondary education at St. Joseph's, and some of them went on to the priesthood. The men in charge at the college were partial to Gothic architecture.

The Gothic form of architecture emerged around the time of Francis of Assisi, who lived from 1181 to 1226 A.D. The 12th century was the start of the Renaissance, a time when the darkness of the Middle Ages gradually faded, and major advances emerged in art, literature, science, architecture and philosophy. The Gothic style featured pointed arches, high ceilings, a



▶▶
The Rev. Theodosius Plassmeyer, OFM, commissioned the Emil Frei windows in 1918.



◀◀ **The Rev. Casimir Hueppe, OFM, introduced Gothic elements to St. Francis of Assisi Church in Teutopolis in 1901-1902.**

soaring steeple and big windows, often covered with bright stained-glass illustrations of Jesus and the saints.

The old Romanesque emphasis on safety shifted to a more ethereal Gothic sense of reaching up to heaven.

The pastor who was sent to manage the Teutopolis flock in 1899 shared the Franciscan enthusiasm for all things Gothic. Father Casimir Hueppe, OFM was an immigrant from Westphalia, Germany. He instigated major changes inside the church, starting in the early years of his pastorate. The ceiling was lifted and the old Romanesque main and side altars were replaced with Gothic altars. Two huge new windows let in light on either side of the main altar, and they were pointed at the top in the Gothic style.

The next pastor was Father Theodosius Plassmeyer, OFM. He took over the position in 1912. Unlike his predecessors, he was native born and came to Teutopolis from Osage County, Missouri. Father Theodosius was ordained in 1898 and almost immediately started teaching at St. Joseph's College. After he moved across the tracks to the church, he initiated the creation and installation of stained glass in the east and west wall Romanesque-design windows, as well as in the newer Gothic windows flanking the main altar.

The windows were created by the artists of the Emil Frei Art Glass Company. Emil Frei was an immigrant from Bavaria. After attending the Munich Academy of Art, he came to this country around 1890. After a stay in California, he established a studio and a sales room in St. Louis. The company accumulated an extensive portfolio of work around the Midwest before the commission from Teutopolis arrived around 1918. The company had a reputation for richly detailed depictions of the life of Christ and his followers. The vibrant colors were a sharp contrast to the subdued brown-green-rose-golds of Romanesque artwork.

Evidence for Father Plassmeyer's enthusiasm for the project comes from a primary source dated 1923. He wrote and published an illustrated booklet, "The Art Windows of St. Francis Church Teutopolis." This publication was not entrusted to an American printer. It was sent to the Sommer Booking Publishing Company, which was situated in a suburb of Berlin.

The result was a striking booklet bound in dark olive-green paper with a glued spine and glossy pages printed on what is roughly equivalent to today's 80-pound stock. Each of the 11 stained-glass windows is depicted in greyscale on an individual page, and the page facing each one contains Father Plassmeyer's description. These booklets were distributed widely and without cost to the recipients.

Unfortunately, Father Plassmeyer did not identify all the individuals depicted in the windows, but in some cases, their names can be discerned by

learning about the life of Francis of Assisi. In addition, he did not provide illustrations and explanations of the Gothic windows flanking the main altar, which contain images of St. Clare of Assisi and St. Teresa of Avila. St. Clare (1193-1253 A.D.) was from Italy and a Second Order Franciscan nun (Poor Clare). St. Teresa of Avila (1515-1582 A.D.) was from Spain and a Carmelite nun.

What the two women had in common was that they both were founders of a cloistered order of nuns who made perpetual vows of poverty, chastity, obedience and enclosure.

Of the 11 Romanesque-style side windows, five are on the west wall and six are on the east wall. Nine illustrate events from the life of Francis of Assisi, arranged in roughly chronological order. Most windows also commemorate the St. Francis Parish donor or donors in some way.

Window No. 4 depicts some of Francis' best-known characteristics: his love of nature and desire for peace. He is surrounded by animals, large and small. This window's design was inspired by a painting done by a German artist, Joseph von Fruebuch. The monk peeking out from behind the stag's head is not identified in Father Theodosius' booklet, but there is a good possibility that it is Brother Leo, who was Francis' scribe and frequent companion. The John Funneman family, farm people from north of Teutopolis, provided financial support for this window.

Window No. 6 is the first one on the east wall and is located under the choir loft. Around 1219 A.D., Francis took his quest for peace to Egypt. This was during the Fifth Crusade, and the Catholic knights were fighting the Muslim Turks. During a brief truce, Francis and his companion were able to slip behind enemy lines to see Sultan Melek-El-Kamil.

In the window, as Francis preaches, the Sultan looks unimpressed and the men around him radiate hostility. Yet the visit eventually had a positive impact, as the Franciscan Friars have had a long presence in the Holy Land. Starting in earnest around 342 A.D., they cared for the shrines at holy sites in Jerusalem, Nazareth and Bethlehem, among others. This window was funded by the parish's Men's and Ladies' Sodalities.

Window No. 8, also on the east wall, is the Nativity. Francis believed that people who were commemorating Christ's birth were not getting a good sense of what happened in Bethlehem, so he planned a sensory experience near Greccio around 1220 A.D. He had a friend in the area set up a manger to hold a baby and to station some large farm animals nearby. Midnight mass was celebrated there and then Francis preached.

During the sermon, the people could see the baby, its wrappings and the straw under him, as well as detect the sight, sounds and smells of the animals. Since that time, the creche has been an integral part of Christmas for many people. The George Adam family, who lived in Teutopolis, paid for this window.

Francis died in 1224 A.D. and was declared a saint just two years later. Many other scenes from his life are illustrated in the Emil Frei windows. They were, and are, a gift to all who view them. As the people of St. Francis of Assisi Parish commemorate 175 years since the laying of the church cornerstone in 1851, you are invited to explore their beauty.



This stained-glass window at St. Francis of Assisi Church in Teutopolis depicts Francis and Sultan Melek-El-Kamil, circa 1219 A.D.

BANKS & CREDIT UNIONS

EFFINGHAM

Constitution Bank
501 N. Keller Drive
217-347-2300
constitutionbank.com

Crossroads Bank
2000 S. Banker St.
217-347-7751
crossroadsbank.com

Crossroads Bank
806 N. Keller Drive
217-342-4422
crossroadsbank.com

Effingham Highway Credit Union
400 W. Wabash Ave.
217-342-8209

Fifth Third Bank
200 E. Jefferson Ave.
217-342-5700
53.com

First Mid Bank and Trust
902 N. Keller Drive
217-342-6111
firstmid.com

Land of Lincoln Credit Union
2302 S. Banker St.
217-342-7077

Land of Lincoln Credit Union
1302 Thelma Keller Ave.
1-844-222-7788
llcu.org

Midland States Bank
110 S. Fifth St.
217-342-2141
midlandsb.com

ATMs located at 1202 Network
Center Drive & 2911 S. Banker St.
Midland States Bank
Customer Service: 217-342-9800
midlandsb.com

First National Bank of Waterloo
210 E. Fayette Ave.
217-342-3200
fnbwaterloo.com

Dieterich Bank
Effingham Location
510 W. Fayette Ave.
217-540-1000
dieterichbank.com

Dieterich Bank
Lake Sara Location
10911 E. State Hwy. 33
217-868-5995
dieterichbank.com

Teutopolis State Bank
Effingham Location
900 W. Jefferson Ave.
217-342-2526
teutopolisstatebank.com

Washington Savings Bank
200 S. Banker St.
217-347-7173
washingtonsavings.net

Washington Savings Bank
1300 N. Keller Drive
217-347-7172
washingtonsavings.net

BEECHER CITY

First State Bank of Beecher City
101 S. Charles St.
618-487-5161
fsbbc.com

ALTAMONT

First Mid Bank and Trust
101 W. Washington Ave.
618-483-5151
firstmid.com

People's Bank and Trust
511 S. Main St.
888-728-1954
bankpbt.com

DIETERICH

Dieterich Bank
101 S. Main St., Dieterich
217-925-2265
dieterichbank.com

TEUTOPOLIS

Teutopolis State Bank
106 E. Main St.
217-857-3166
teutopolisstatebank.com

Dieterich Bank
Teutopolis Location
1510 E. Fayette Ave.
P.O. Box 6010
217-857-1313
dieterichbank.com

HOTELS & LODGING

Ramada by Wyndham Effingham
1606 W. Fayette Ave., Effingham
217-595-6056

Baymont by Wyndham Effingham
1811 W. Fayette Ave., Effingham
217-294-6051

Comfort Suites
1310 W. Fayette Road (off Exit 159)
Effingham
217-342-3151

Country Inn & Suites
by Radisson
1200 N. Raney St., Effingham
217-540-5555

Days Inn by Wyndham Effingham
1205 N. Keller Drive, Effingham
217-662-7077

Best Western Delta Inn
1509 Hampton Drive, Effingham
217-342-4499

Effingham Motel
702 E. Fayette Ave., Effingham
217-342-3991

Fairfield Inn & Suites by Marriott
Effingham
1111 N. Henrietta St., Effingham
217-540-5454

Holiday Inn Effingham
1301 Avenue of Mid-America, Effingham
217-540-7777

La Quinta Inn & Suites by
Wyndham Effingham
1103 Avenue of Mid-America
Effingham
217-540-1111

Hampton Inn & Suites
1305 N. Keller Drive, Effingham
217-540-5050

Holiday Inn Express & Suites
1604 W. Fayette Ave., Effingham
217-994-9949

Home2 Suites by Hilton Effingham
1201 N. Raney St., Effingham
217-849-8255

Motel 6 Effingham
1305 N. Keller Drive, Effingham
217-347-5141

Super 8 by Wyndham Effingham
1400 Thelma Keller Ave., Effingham
217-393-6962

Quality Inn Effingham
1304 W. Evergreen Ave., Effingham
217-347-5050

Relax Inn in Altamont
3091 E. Mill Road
618-483-6300

Altamont Motel
101 W. Cumberland Rd., Altamont
618-483-6143

Cobblestone Inn & Suites
4 W. Carriage Lane, Altamont
618-483-3111

HOUSING

Effingham County Housing
Authority
215 N. Banker, Effingham
217-342-3520

LOCAL REAL ESTATE AGENCIES

Century 21 Realty Concepts
111 S. Henrietta St., Effingham
217-342-6080
century21realtyconcepts.com

Century 21 Realty Concepts
305 E. Cumberland Rd., Altamont
618-483-3000
century21realtyconcepts.com

Dammerman & Associates
Elite Realty
711 W. Jefferson Ave., Effingham
217-500-1000

Full Circle Realty
123 E. Jefferson Ave., Effingham
217-803-0145
FCRiL.com

Keller Williams, The Real Estate
Center of Illinois
1102 W. Jefferson Ave., Effingham
217-342-4663

Lake Sara Realty
8724 E. Marine Rd., Effingham
447-345-5253

Loyalty Real Estate
603 W. Jefferson Ave., Effingham
217-820-0608
Loyalty-realestate.com

ReMax Key Advantage
1100 W. Evergreen Ave., Effingham
217-347-0404; 217-342-4050
effinghamhomes.com

Schackmann Realty Inc.
801 W. Jefferson Ave., Effingham
217-342-4500
schackmann.com

Shelby Realty Services
901 N. Keller Drive, Effingham
1-855-215-3400
Shelbyrealty.com

Thats A Wrap Realty
312 N. Keller Dr., Ste C, Effingham
217-888-8297
thatsawraprealty.com

The Meyers Agency
605 W. Jefferson Ave, Effingham
217-663-5885

Whitten Real Estate Agency, PLLC
14933 E. 400th Ave., Dieterich
217-821-0886
whittenrealestateagency.com

WMG Development
1200 Network Centre Drive,
Ste. 3, Effingham
217-540-2191



2000 S Banker Street &
806 N Keller Drive
Effingham, IL 62401

(217) 347-7751

www.crossroadsbank.com





**People's Choice Best Locksmith
& Best Security/Alarm Dealer**

"Locally Owned & Operated For Over 50 Years"



www.barlow-security.com

For All Your Security Needs...

- Fire Alarms • Security Systems
- Bonded Locksmith • Access Controls
- Burglar • Medical • CCTV

347-9630 OR 1-800-322-7569

1107 S. Willow • Effingham • IL 62401

Hours: Mon-Fri 8AM - 4:30PM;

Closed Sat. & Sun.

RESTAURANTS

EFFINGHAM

Arby's
1401 Thelma Keller Ave.
217-342-6615

BaanThai Effingham
108 S. Henrietta St.
217-369-9924

Buffalo Wild Wings
1001 Avenue of Mid-America
217-540-9464

Burger King
1308 N. Keller Dr
217-342-4721

Casey's Carry Out Pizza
1101 S. Banker St.
217-342-2041

Casey's Carry Out Pizza
1104 S. Willow St
217-347-9468

Chaser's Grill and Bar
1809 W. Fayette Ave.
217-347-5336

Chili's Grill & Bar
1300 Avenue of
Mid-America
217-294-6248

China Buffet
2402 N. 3rd St.
217-342-3188

China Express
112 S. Banker St
217-347-0304

Chipotle Mexican Grill
1207 N. Keller Dr
217-347-3800

Cracker Barrel
1101 Avenue of Mid-America
217-347-7130

Cruiser's Drive Thru
806 E. Fayette Ave.
217-342-3760

Culver's
1510 W Fayette Ave.
217-347-4986

Dairy Queen
1411 S. Banker St
217-342-9432

Danny's Bar and Grill
7722 S. Route 45
217-536-5434

Daylight Donuts
207 N. Keller Drive
217-342-4288

Denny's
1307 N. Keller Drive
217-342-4543

Domino's Pizza
1000 W. Fayette Ave.
217-347-7788

Downtown Popcorn Company
314 W Jefferson Ave.
217-347-7676

Dunkin Donuts
1702 W Evergreen Ave
217-347-7183 ext 6

Dunkin Donuts
1805 W. Fayette Ave
217-347-0480

El Rancherito
1313 N. Keller Drive
217-342-4753

Fatso's Famous Pizza
1217 W. Rickelman
217-347-7977

Firefly Grill
1810 Avenue of Mid-America
217-342-2002

Fox Holler Coffee
1200 S. Banker St.
217-690-4423

Fujiyama Japanese Steakhouse
1302 Avenue of Mid-America, Ste. C
217-342-3833

Gabby Goat American Pub & Grill
303 E. Fayette Ave.
217-342-4628

Ginger Ale's Effingham
302 S. Walnut St.
217-342-0254

Golden Corral
1102 Avenue of Mid America
217-690-4884

Gopher's Grill
206 W Jefferson Ave.
217-342-4674

Hardee's
1505 W. Fayette Ave.
217-347-3455

Homewood Grill
1002 W. Fayette Ave.
217-342-4677

Open March thru October

IHOP
1805 W. Fayette Ave.
Located in Petro Travel Center
217-347-0480

Jimmy John's Gourmet Sandwiches
401 N. Keller Drive
217-342-7296

Jersey Mike's Subs
1000 W. Fayette Ave.
217-790-4116

Joe Sipper's Cafe and Roasting
Company
114 S. Fourth St.
217-347-2233

Joe's Pizza & Pasta
115 E. Jefferson Ave.
217-342-9394
217-347-JOES

KFC
1304 Avenue of Mid-America
217-342-4276

Kirby Foods
Ironhorse Cafeteria and Catering
101 S. Merchant St.
217-347-7191

La Favorita Ice Cream and Snacks
1711 S. Banker St.
217-347-7630

La Terraza Express Taqueria
1511 S. Banker St.
Next to Quality Glass
217-342-2649

La Terraza Express Taqueria
204 S. Henrietta St.
Next to Lion's Liquors
217-342-2649

Lickin' My Chicken and Pullin' My
Pork BBQ
1707 Avenue of Mid-America at
Trucker's Pub
217-994-3551

Little Caesars Pizza
200 S. Henrietta St.
217-347-0491

Long John Silver's
1309 N. Keller Drive
217-347-7553

Los Amigos Mexican Restaurant
205 N. Keller Drive
217-994-9143

Lucia's Italian Kitchen
400 W. Clark Ave.
217-207-0226

Maria's Taco House
3001 S. Banker St.
217-347-3200

McAlister's Deli
1507 Hampton Drive
217-240-7175

McDonald's
1304 N. Keller Drive
217-342-2355

McDonald's
2911 S. Banker St.
217-342-4933

McDonald's
2500 N. Third St.
217-342-2605

Niemerg's Steakhouse
1410 W. Fayette Ave.
217-342-3921

Panda Express
1203 N. Keller Drive
217-342-6699

Panera Bread
1601 Damron Ct.
217-240-3001

Papa John's Pizza
100 N. Henrietta St.
217-347-4744

Pinky's
8726 E. Marine Rd
217-868-2628

Pizza Man of Effingham, Inc.
604 W. Jefferson Ave.
217-347-7766

PET SUPPLIES
Three generations
proudly serving the community
for their
family pet care needs.

- Freshwater Plants and Fish
- Reptiles and Amphibians
- Small Animals and Birds
- Bulk, Live and Frozen Foods
- Aquariums, Habitats and Supplies

**NOAH'S ARK
PET SHOPPE**
117 W. Jefferson, Effingham
Ph. 217-347-6624
noahsarkpetshoppe.com

Shop Wednesday-Saturday
10 a.m.-6 p.m.
Closed Sunday-Tuesday

Like us on
facebook

Popeye's Louisiana Kitchen
1702 W. Evergreen Ave.
217-347-7183

Puerto Vallarta
3005 S. Banker St.
217-342-3177

QT Kitchens
1320 N. Third St.
Inside QuikTrip
217-240-3105

Sbarro's
1702 W. Evergreen Ave.
217-347-7183 ext 6

Smoothie King
1603 Ford Ave.
217-342-3401

Starbucks Coffee Co.
1700 Avenue of Mid-America
217-342-5577

Steak 'n Shake
1211 N. Keller Drive
217-210-0386

Subway
404 S. Henrietta St.
217-347-8881

Subway
1204 Avenue of Mid-America
217-342-5551
Located inside Walmart

Subway
2408 N. Third St.
217-347-0701

Taco Bell
1201 N. Keller Drive
217-342-5500

Taqueria Jalisco
306 S. Willow St.
217-663-8768

TGI Friday's
1208 N. Keller Drive
217-342-9499

The Human Bean
406 N. Keller Drive
217-342-0319

The Midway Bar & Grill
18924 U.S. Hwy 45
217-844-2111

TK Grille
1301 Avenue of Mid-America
Inside the Holiday Inn
217-540-7716

Upper Deck Bar & Grill
(inside downtown A1 Liquors)
201 S. 4th St., Suite A, Effingham
217-708-2550

Wandering Whistler Cafe
221 W. Jefferson Ave
423-280-8826

Wendy's
1210 N. Keller Drive
217-342-4420

ALTAMONT

Casey's Carry Out Pizza
101 E. Cumberland Rd.
618-483-3320

Andrew's Eats
301 E. Cumberland Rd.
618-881-0190

Joe's Pizza & Pasta
1008 S. Main St.
618-483-9567

Luke's Bar & Grill
112 W. Adams St.
618-483-6820

McDonald's
1010 S. Main St.
618-483-5354

Subway
1011 S. Main St
618-483-9066

The Cookie Jar
119 W. Washington Ave.
618-483-9004

The Open Door Diner
120 N. Main St.
618-267-8499

DIETERICH

Old Mac's Drive-Thru & Cafe
203 N. Loda St. (on Rt. 33)
217-925-5588

RoadRunner Refuel
405 E. Center St.
217-925-5500

Subway
106 E. Center St.
217-925-5470

The Maroon Spoon
Ice Cream Shop
115 S. Main St.

The Rail Yard Bar and Grill
202 W. Center St.
217-925-5005

EDGEWOOD

Treats R' Us
700 Route 37
618-238-4115

TEUTOPOLIS

Brickbat Alley
122 E. Main St.
217-500-2015

Casey's Carry Out Pizza
312 W. Main St.
217-857-1602

Kountry Kitchen
105 E. Main St.
217-857-3948

Los Arcos
500 W. Main St.
217-813-6008

Siegfried's Supper Club
201 S. Pearl St.
217-813-8495

Teutopolis Treats
101 W. Main St.
217-343-1600

BEECHER CITY

Pit Stop
501 E. Poplar St
618-487-7867

WATSON

Amelia's Cafe
6902 U.S. Hwy 45
217-240-8494

Papi's Restaurant
100 E. Main St.
217-536-3050



EFFINGHAM NEW CAR DEALERS



Dan Hecht

217-342-4111 or 1-800-342-1892
2400 S. Banker St., Effingham | www.danhecht.com



Russ Braunecker
217-347-0505
2309 S. Banker St., Effingham | www.brauneckerauto.com



Goeckner Bros
(217) 342-3355
600 E. Fayette Ave., Effingham, IL | www.goecknerbros.net



NORTH SIDE
(800) 500-FORD or (217) 342-3929
1312 North Keller Drive, Effingham, IL | www.ewinghamford.com



Roy Schmidt Honda
217-342-8600 • 1-866-800-9920
1705 W. Fayette Ave., Effingham, IL | www.royschmidthonda.com



Shown is a military portrait of Pfc. Stevenson D. Jenkins and the Purple Heart awarded to him.

The *JOURNEY* of the **PURPLE HEART**

BY JANE RIES
PHOTOS COURTESY EFFINGHAM COUNTY MUSEUM

I love history and I love sharing the stories of those with roots in Effingham County.

Several years ago, I found a picture of Stevenson Drexel Jenkins, who lived in Altamont with his mother, Ora, older brother Ancil Lafavers, younger brother Rayvaughn Jenkins and stepfather Ben Harris. He was attending high school at Altamont when I first read something about him and discovered that he went by his middle name of Drexel.

The family was from Arkansas originally. His parents divorced sometime after the 1930 census and by 1940, his mother and two brothers were living in Altamont, and his mother had remarried. I finally found a picture of him, information about his military service, and his death during the Battle of the Bulge.

I added his picture to the military binders at the Effingham County Museum and shared his military write-up on the museum page when I featured those who took part in the Battle of the Bulge. I felt it was important to remember his service to our country and his death during that long, horrible Battle of the Bulge.

Here is the military write-up I did for Stevenson Drexel Jenkins and, at the end of this article, I will tell you the rest of the story.

STEVENSON D. JENKINS, ARMY, WWII

Stevenson Drexel Jenkins was born Sept. 7, 1925, the son of Hubert and Ora (Ross) Jenkins of Byron, Arkansas. Drexel, as he was known, attended the local schools. His parents later divorced and both parents

remarried. His mother later lived in Altamont, and Drexel attended school at Altamont Community High School.

Drexel entered service in the Army on Oct. 18, 1943. He trained at four different camps in the States before shipping overseas to the European Theater. He first saw action in France during the Rhineland Campaign, when they were sent to the Siegfried Line. They next moved to Belgium as part of the Ardennes-Alsace campaign known as the Battle of the Bulge.

THE ALTAMONT NEWS, MARCH 22, 1945

“Mrs. Ben L. Harris received the following telegram on Thursday of last week.

“Washington, D.C., March 15, 1945. Mrs. Ora P. Harris, 132 W. Grant, Altamont, Ill. The Secretary of War desires me to express his deep regret that your son, Pfc. Jenkins, Stevenson D., was killed in action in Belgium 21 December 1944. He previously has been reported missing in action. Confirming letter follows. A. Ulio, the Adjutant General.”

“Pfc. Stevenson D. Jenkins, the second son of Mrs. Harris, was inducted into the army December 8, 1943, from Fulton County, Ark. He received his basic training at Camp Fannin, Texas. He had further training at Camp Breckenridge, Ky., Camp Butner, N.C., and finally at Camp Atterbury, Ind., from which point he left for an eastern port of embarkation the latter part of October, 1944, arriving in England in November. Almost immediately he landed in France, going on to the Belgium front with his unit; Company C, 424th Inf. Reg't., 106th Division.

“The previous telegram received from the War Department was dated January 13, 1945, and stated Drexel was missing in action December 21, 1944, in Germany.

“Drexel was nineteen years of age on September 7, 1944. Altamont, Ill.

“At the conclusion of the Decoration Day program at Union cemetery, Gold Star citations were given to the nearest of kin of the following service men killed in action in World War II: Sgt. Paul L. Fischer, Lt. Herman M. Gieseking, Pfc. Reuben Wade, Cpl. Arnold E. Mueller, Pfc. William G. Tappendorf, Pfc. Hugo Voelker, Pfc. Cecil H. Dammerman, T/5 Forrest Morr, Pfc. Stevenson D. Jenkins, St. Sgt. Owen E. Cox, Pfc. Sherburne C. Austin, Pfc. Walter E. Schwerdtfeger, Harold Oliver, and Seth H. (Jack) McCoy.

“Stevenson Drexel Jenkins was killed in action near Bracht, Belgium, during the Battle of the Bulge on Dec. 21, 1944. He is buried at Henri-Chapelle American Cemetery and Memorial in Liege, Belgium.”

PURPLE HEART

I thought that was the end of the story, but it was not. On Feb. 1, 2026, Jill Boone reached out to me and asked if I knew anything about Stevenson D. Jenkins. I told her that I had information about him and had done a military write-up on him.

Jill and I have walked cemeteries together and done work connecting families on Find-A-Grave and she knew that I liked to do research as much as she did.

She told me that John Cox had found a Purple Heart when he was going through his house and pulling out boxes of things probably purchased at an auction. He found a black box labeled Purple Heart. When he opened the box he found the Purple Heart, ribbon and lapel pin. When he turned the Purple Heart over, he saw the name Stevenson D. Jenkins. There were also folded-up newspaper clippings in the box.

His parents and he had attended many auctions throughout the years and to the best of his knowledge he believes that it must have come from an auction. He asked Jill if she had any way of finding out about this soldier and if there were any family members that could receive the Purple Heart.

Jill reached out to me and some other people. I told her I would see what I could find out.

I got busy and dug out my notes I had kept for his military write-up. I knew I had to dig deeper so I got to work. I searched through census records, death records, obituaries, newspapers, military records, and everything I could think of until I started to make connections. After a couple of weeks, I had found some phone numbers and a current address. The phone number was no longer valid so I determined that I would write a letter and send it to the gentleman who was the nephew of Stevenson Drexel Jenkins and was also named after him. I decided that I would send it certified mail the next day because it was Feb. 16, Presidents' Day, and the Post Office was closed.

On Feb. 17, I was working at the museum and had gone to the third floor looking for items for a display. Just as I unlocked the door to the accession room, my phone alerted me that someone had commented on the museum page. I pulled up the comment and my eyes bugged out as I read the following comment that had been added to my museum post featuring Stevenson Drexel Jenkins during the Battle of the Bulge.

“Thank you for remembering Drexel. He is my Uncle, and I was named after him (Steven Drexel Jenkins.) It is very gratifying to see him remembered through your museum. I am wondering if anyone in your museum would have any memories or documents relating to him or others of the Jenkins family in Illinois? I have compiled what little genealogy information I have, which is quite sparse. The write-up you gave on this post is excellent, thank you so much. Best regards, Steve Jenkins.”

This was the gentleman I was going to mail a certified letter to! I hurriedly replied and said I would send him a private message. I sent him my phone number and asked him to call me. He tried the number replied and said I must have entered a digit wrong in my phone number and sure enough I had.

Just as I was entering my number again, he sent me his phone number, so I called him. I asked him some questions to make sure he was the gentleman I was searching for and he was indeed.

He said that day he put his uncle's name in Google to see if he could find out any further information about his dad's brother who had been killed in action during WWII. The first thing that popped up was the post I had done of his uncle on our museum page on Facebook. I was blown away! What are the odds of that happening at the same time I was preparing a letter to send to him!

We talked for a while and I told him about the Purple Heart that had been found by John Cox. He said he would be honored to accept it, saying that his dad had always wanted his brother remembered. I told him I would go to the Post Office as soon as possible to determine the best way to send the Purple Heart to him. I let Jill Boone know that I had just spoken with Steven D. Jenkins and asked her to let John Cox know this, too.

I met Jill the next morning when she brought the Purple Heart to me. LoElla Baker and I later walked to the Post Office and asked about the safest option for returning this Purple Heart. The postal worker gave us a box to put it in and told us the safest way to send it that would also provide insurance. LoElla and I wrapped the black box in bubble wrap, put it in the box provided by the Post Office and returned there the next day to mail it. I texted Steve Jenkins the code so he could track the package. I tracked the package also. It wasn't long before I received word that the package had arrived.

Eighty years ago this soldier lost his life in one of the longest and deadliest battles of WWII. This Purple Heart traveled from the Department of the Army to Altamont, where his mother held it in her hands and wept for her son. It was cradled in the hands of his brothers Ancil and Rayvaughn. By 1978, those three relatives had passed away and the Purple Heart mistakenly moved again, this time to rural Effingham County.

Thanks to the kindness of John Cox and his desire to find a relative to send this to, he reached out to Jill Boone and she reached out to me. Because of our efforts, the Purple Heart moved to the next generation as it traveled to Colorado.

Steve told me that one day it would be passed down to his nephew who was also a namesake of Stevenson Drexel Jenkins. That means someday the Purple Heart will make another journey and the next generation will learn the story of this soldier who was killed in action during the Battle of the Bulge.

May the story of Stevenson Drexel Jenkins be passed on to each generation so that he will never be forgotten.

Once again, people have reached out and helped us to tell the stories one picture, one person and one place at a time. We are truly thankful for that. May we always share the stories of Effingham County, Illinois, with your continued help.



Stevenson Drexel Jenkins' mother, Ora Harris, saved this clipping showing a soldier's burial at Henri-Chapelle American Cemetery and Memorial in Belgium.

FINE ARTS

Effingham Performance Center

1325 Outer Belt West
217-540-2788
the-epc.org

After the devastating news of the closing of the Rosebud Theatre in Effingham, a group of local business men and women met and decided that they must work to save the theatre. The group acknowledged the community's disappointment as the Rosebud Theatre is truly a remarkable entertainment complex. Effingham and South Central Illinois sincerely embraced the live entertainment that graced the stage of this beautiful theatre. The men and women representing the ACCI refused to let the curtain close forever! The Arts Connection of Central Illinois organized themselves as a not-for-profit group, immediately put past Rosebud Executive Director Janie Oldfield on retainer as a consultant and devised a plan that would include the City of Effingham purchasing the facility and leasing it back to the ACCI for \$1/year. Kim Jansen is the Executive Director.

FACE (Fine Arts, County of Effingham)

217-347-9678
email: effinghamface442@gmail.com

The Fine Arts County of Effingham (F.A.C.E.) originated in 1974, formed by individuals who felt a desire of artistic expression who wished to join with others in performing and advancing the overall awareness of the arts. These volunteers set a campaign to promote and encourage the development of drama, painting, music and dance in the Effingham area. Today, F.A.C.E. has expanded its exposure, production and involvement in the artistic affairs in Effingham. Our community now has an opportunity to participate in, enjoy or sponsor programs of orchestral and choral music, as well as theatrical performances. In addition, F.A.C.E. offers annual scholarships to area students to further education and exposure to chosen mediums of artistic interest. F.A.C.E. is a not for profit



organization governed by a Board of Directors from the Effingham county area. These volunteers devote their time and resources to ensure this organization flourishes and responds to the creative needs of Effingham county. This Board also works closely with the Effingham Art Guild for the extension of the visual and physical arts medium. Our organization welcomes anyone who desires to participate in the purpose of this group. F.A.C.E. nurtures these volunteers in directing, acting, stage craft, lighting, sound, and costume design as well as all other aspects of production. Musical and vocal participants can enjoy the opportunity to perfect their craft as well.

Effingham Art Guild

Hendelmeyer Park District Ron Diehl Recreation Center, Fine Arts Room,
1906 S. Fourth St; 217-342-4415;
email: effinghamart@gmail.com

Membership is open to anyone that appreciates art. Most of our members have some degree of artistic skill but it is not a requirement of membership. The guild hosts annual exhibits and monthly meetings.

THE EFFINGHAM COUNTY MUSEUM

110 E. Jefferson Ave., Effingham, IL.

Tells the story of local people and the things which mattered in their lives like...

The churches they attended. Their personal interests.



The products which they produced.

Their successes in local sports and beyond.

Their business workplaces and their skills.



PLEASE VISIT THE
EFFINGHAM COUNTY MUSEUM

for visiting hours www.iffinghamcountymuseum.org

Effingham
VETERINARY
Clinic, LTD

East Side
VETERINARY
Clinic, LTD

Dr. Chad Ely	Dr. Lindsey Goeckner	Dr. Brianne Urfer
Dr. Dale Spindler	Dr. Tanner Kirby	Dr. Luke Daniels
Dr. James Gratz	Dr. Katie Shreve	Dr. Rochelle Oseland
Dr. Jessica Schultz	Dr. Candace Walk	Dr. Amy Flynn
Dr. Mara Fehrenbacher		

SMALL ANIMALS & FARM SERVICE
EFFINGHAM VET CLINIC
408 KELLER DR., EFFINGHAM
(217) 342-9793
WWW.EFFINGHAMVETCLINIC.COM

HOURS:
MON. 7:30-5;
T-F 7:30-5;
SAT. 7:30-NOON;
CLOSED SUN.

AN EFFINGHAM TRADITION OF EXCELLENCE

INDUSTRY

ADI Repairs
2700 S. Raney St., Effingham
ADM Alliance & Nutrition
1200 McGrath Ave., Effingham
800-826-9868
adm.com
Air Stamping
Three Legend Park Rt. 45 North,
Effingham
217-342-1283
B & L Machine & Design
1 Legend Park, Effingham
217-342-3918
Beck's Hybrids
2100 Bourgeois Drive, Effingham
217-347-6300
Bierman Welding
1103 S. Willow St, Effingham
217-342-2050
BK Resources
4A Do-It Drive, Altamont
888-310-4393
bk-resources.com
Brumleve Industries
1317 W. Main St., Teutopolis
800-937-0058
brumleveind.com
Canarm Inc
709 E. Main St, Teutopolis
217-342-0209
Continental Mills
1100 Stevens Ave., Effingham
217-540-4000
DMB Coatings & Spray Foam
Insulation
Rural Route 1 Box 22 A, Beecher City
217-343-9912
Effingham Asphalt
1601 W. Wabash, Effingham
217-342-2151
effinghamasphalt.com
Effingham Machining & Assembly
Components
1500 Heartland Blvd., Effingham
217-240-7332
Elite Powder Coating &
Technologies
103 Norb Ave, Dieterich
217-925-5859
elitepct.com
Elizabeth Yager Designs &
Cabinetry
814 E. Fayette Ave, Effingham
612-702-2929
Farmweld
605 E. Main St., Teutopolis
217-857-6423
farmweld.com
Flex-N-Gate Effingham LLC
2701 S. Banker St., Effingham
1-419-503-0520
flex-n-gate.com

Grain Belt Express
(Invenergy Transmission)
1901 S. Fourth St, Ste. 214,
Effingham
217-689-5621
Heartland Dental Care, LLC
1200 Network Centre Drive,
Effingham
217-540-5100
heartland.com
Higgs Welding
101 Zumbahlen Ave., Dieterich
217-925-5999
higgswelding.com
Holland Energy
2061 E. 000 North Road,
Beecher City
618-487-9120
hoosierenergy.com
Ideal Machine, Inc.
400 Amy St., Dieterich
217-925-5109
Irwin Seating Company-
Telescopic Division
610 E. Cumberland Rd., Altamont
618-483-6157
irwinseating.com
J & J Ventures
1500 S. Raney St., Effingham
855-921-1030
jjventures.com
John Boos & Company
3601 and 3701 S. Banker St.,
Effingham
217-347-7701
Showroom: 1703 Avenue of
Mid-America, Effingham
217-347-7790
johnboos.com
Joint Active Systems Inc.
2600 S. Raney St., Effingham
217-342-3412
jointactivesystems.com
Kingery Printing Company
3012 S. Banker St., Effingham
217-347-5151
kingeryprinting.com
Koerner Distributor
1601 Pike Ave., Effingham
800-475-5162
koernerdistributor.com
Lustig Custom Cabinets
921 E. Fayette Ave., Effingham
217-342-6210
lustigcabinets.com
mail@lustigcabinets.com
Mette's Cabinets & Countertops
3240 S. Banker St., Effingham
217-342-9552
mettescc.com
Mette's Distinctive Lighting
308 W Airport Rd., Effingham
217-342-5444
mettesdistinctivelighting.com

Mid America Motorworks
2800 N. Third St., Effingham
800-500-1500
mamotorworks.com
Mid-Illinois Concrete
1300 Commerce Ave., Effingham
217-342-2498
mid-illinoisconcrete.com
NOVA Solutions, Inc.
421 W. Industrial Ave., Effingham
217-342-7070, 800-730-6682
novadesk.com
Palamides USA
100 Norb Ave., Ste. 3, Dieterich
217-925-5900
palamides.de
Patterson Technology Center
1201 Althoff Drive, Effingham
217-347-5964
Peerless of America, II
1201 W. Wabash Ave., Effingham
217-342-0400
peerlessofamerica.com
Pepsi Mid-America
1400 W. Jaycee Ave., Effingham
800-827-7020
Pyramid Marble & Granite
1303 McGrath Ave., Effingham
217-342-2001
pyramidtops.com
Sherwin Williams Company
Distribution Center
711 W. Wabash Ave., Effingham
217-347-0333

Paint Store
105 N. Keller Drive, Effingham
217-347-2151
Siemer Milling Company
111 W. Main St., Teutopolis
217-857-3131
siemermilling.com
SIM Products
6903 E. 1600th Ave., Shumway
217-868-5431
simproducts.net
Sonne Energy Solutions
114 E. Walnut St, Teutopolis
217-864-8222
South Central FS
Offices: 405 S. Banker St,
Effingham
217-342-9231
Farm Store: 444 S. Willow St,
Effingham
217-342-9234
7471 N. 300th St, Altamont
618-483-5117
South Central Structures & Doors
400 S. Willow St., Effingham
217-857-6566
SRMD Solutions
109 N. Commercial Drive,
Teutopolis
217-600-3558
SRMDSolutions.com

ARROW INC. TERMITE AND PEST CONTROL

**TOP QUALITY WORK AT
A COMPETITIVE PRICE**

- Free Termite Inspections
- New Construction Pretreat
- Established in Effingham Over 30 Years
- All Work Guaranteed
- Termites (Extended Guarantee)
- Roaches
- Ants
- Spiders
- Fleas
- Rodents



**FREE
ESTIMATES**

**Locally Owned
& Operated**

217-342-4313

Toll Free 866-342-4313

**708 West Jefferson Ave.,
Effingham, IL 62401**

Stevens Industries, Inc.
704 W. Main St., Teutopolis
217-857-7100
stevensind.com

Support Products Inc.
309 W. Professional Pk., Effingham
217-536-6171

The Equity
1203 W. Niccum Ave, Ste. 4218,
Effingham
217-342-2403
2900 N. Third St., Ste. A, Effingham
217-342-4101
Farm & Home Store
201 W. Roadway Ave, Effingham
217-342-4101
905 S. Main St, Altamont

618-483-6325
23801 E. State Highway 33,
Dieterich
217-925-5269
15910 N. 2300th St, Montrose
217-924-4181
Planters Precision
23101 E. 1600th Ave, Montrose
217-924-4606

The New York Blower Company
1304 W. Jaycee Ave., Effingham
217-347-3233

Three Z Printing Company
902 W. Main St., Teutopolis
217-857-3153
threez.com

Tick Tock Energy
800 E. Fayette Ave, Effingham
217-994-9020

Versatech
1609 W. Wernsing Ave., Effingham
217-342-3500

Vogel Manufacturing
1611 W. Wernsing Ave, Effingham
217-342-6949

Heuerman Bros Trucking
14375 E. 1600th Ave, Effingham
217-342-6116

Huelsing Trucking LLC
16204 E. 1635th Ave., Effingham
217-857-6231

Kelly Corporation
3027 E. Mill Rd., Altamont
618-483-5835

Kent Wolff Trucking & Septic
8162 County Rd. 400 E.,
Altamont
618-267-0595

Koester Trucking
8289 Co Rd 2000E, Dieterich
217-925-5636

LOGISTICS SERVICES

TRUCKING COMPANIES

3 Sisters Logistics, LLC
1412 W. Main St., Teutopolis
217-837-3002

ABF Freight
2500 S. Raney, Effingham
217-342-9897

ADM Trucking
1 Goodlife Dr, Effingham
217-342-3900

Broadway Express
1901 W. Evergreen Ave.,
Effingham
217-347-5900

Bulkmatic Transport Co
116 Harvester St., Teutopolis
217-857-6474

Central Transport
1201 W. Niccum Ave., Effingham
586-467-1900

D & R Transport Inc
12114 N. 890th St, Effingham
217-343-3183

D Lines Inc.
2936 E. 800th Ave.,
Altamont
618-483-5471

Dasenbrock Trucking
15657 N. Snake Trail Rd,
Effingham
217-857-6355

DN Trucking LLC
4881 E. 1000th Ave., Altamont
618-483-6441

Ed Lewis Trucking
300 S. Maple St., Montrose
618-686-3555

Enloe Trucking
Montrose
217-663-6600

Estes Express Lines
1412 E. Fayette Ave.,
Teutopolis
217-857-6187

FedEx Ground
1700 W. Heartland Ave.,
Effingham
800-463-3339

Hetzl's Overland
304 W Airport Rd., Effingham
800-900-4942

Landstar Inway
1-800-369-2555

MMRM Inc
10569 E. Aminoff Dr, Effingham
217-868-5914

Nelson Trucking
1615 1100th Ave, Altamont
618-483-9595

Probst Trucking
Rick & Eric Probst
204 Niebrugge Ave, Dieterich
217-254-0279

Putnam Trucking Inc.
11970 N. 900th St., Effingham
217-697-4901

Retro Transport, LLC
Connor Flach
465 CR 00N, Montrose
217-821-2745

Rightway Logistics
14583 N. Kopley Ln, Effingham
217-868-9589

Rightway Transportation of IL
5791 US 40, Altamont
618-483-5408

Saia LTL Freight
1414 E. Fayette Ave., Teutopolis
217-857-9330

Schoonover Trucking
12745 1000th Ave, Effingham
217-536-9055

Lonnie Soltwedel Trucking
15723 N. Nazarene Rd, Effingham
217-868-5814

SS Chad Express
2502 S. Raney, Effingham
217-844-3378

Stacie Trucking LLC
11128 E. 1550th Ave, Effingham
217-821-3217

TRUCK REPAIR SHOPS

Crossroads Truck Equipment
1400 W. Niccum Ave., Effingham
217-347-0456

Diesel Dr. Diagnostics
1507 W. Fayette Ave.,
Effingham
217-728-1589

Weber's Clothing



TEUTOPOLIS, IL

- Over 60 styles of men's tuxedos • Price group collections to fit any budget
- Choose from over 150 different vests and ties to perfectly accent any color
 - Newest and most complete selection of tuxedos and accessories
 - Grooms tux is FREE with 5 fully paid rentals!
 - Visit America's Top Tuxedo

Website: jimsformalwear.com

Weber's Clothing

114 E. Main, Teutopolis, IL • Ph: (217) 857-6351 • www.webersclothing.com



SISTERS LOGISTICS

(217) 857-3425

3sisterslogistics.com

Your one-stop shop for
construcion material and hauling services

**Crushed Stone • Ag Lime
Sand & Gravel • Grain**

1412 W. Main St. Teutopolis, IL 62467

Goodyear Commercial Tire & Service Centers
712 E. Rickelman Ave.,
Effingham
217-857-1760

Fleetmaster Truck Parts & Service
1703 W. Fayette Ave.,
Effingham
217-342-9550

FleetPride Service Center
1607 W. Wernsing Ave., Effingham
217-347-7764

I-70 Truck Center Inc.
2710 N. Third St., Effingham
217-342-4120

Scheid Diesel Services
3120 S. Banker St., Effingham
217-536-5200

Wilson Trailer Shop
1612 W. Wernsing Ave.,
Effingham
217-347-2905

TOWING SERVICES

Heartland Towing and Recovery
1909 W Evergreen Ave.,
Effingham
217-342-5610

Interstate 70 Towing & Recovery
3027 E. Mill Rd., Altamont
217-708-2242 Effingham
217-961-1046 Altamont

Randy's Towing
9744 E. US-40, Effingham
217-240-0334

Tri-Power Towing & Recovery
900 S. Oak, Effingham
217-342-6135

TRUCK RENTAL AGENCY

Route 40 Equipment Rental
815 S. Maple St., Effingham
217-500-1690

U-Haul Neighborhood Dealer
• 1000 W. Fayette Ave, Effingham
217-342-9282
• 702 E. Fayette Ave., Effingham
217-342-7422

TRUCK DEALERS

Rush Truck Center
1701 W. Fayette Ave.,
Effingham
217-540-8000

JX Truck Center
1901 W. Evergreen Ave.,
Effingham
217-347-5031

Kenworth of Effingham
1010 Outer Belt West,
Effingham
217-347-2242

Mid Illinois Equipment Sales
401 Highway View Ave., Montrose
217-924-4104

Truck Centers Inc.
1700 Gillenwater Ave., Effingham
217-342-3300

MOVERS

Broadway Express Moving
1901 W. Evergreen Ave.,
Effingham
217-347-5900

U-Pack
1700 W. Wernsing Ave.,
Effingham
844-611-4582

SHIPPING COMPANY

FedEx Freight
900 Outer Belt W., Effingham
800-824-2767

TRUCK MAINTENANCE

Diesel Dr. Diagnostics
1507 W Fayette Ave.,
Effingham
217-728-1589

Effingham Tire & Auto
1601 W. Fayette Ave., Effingham
217-347-7718

Freightliner
1700 Gillenwater Ave.,
Effingham
217-342-3300

Joe's Truck Lube
111 S. Outer Belt West,
Effingham
217-342-2332

Speedco Truck Lube and Tires
1704 W. Evergreen Ave.,
Effingham
217-342-6935

TRUCK WASHES

Blue Beacon Truck Wash
• 1703 W. Evergreen Ave,
Effingham
217-342-4303
• 1806 W. Fayette Ave.,
Effingham
217-347-8930

Effingham Chrome Shop
1808 W. Fayette Ave., Effingham
217-347-0151

TRUCK STOPS

Flying J Travel Plaza
1701 W. Evergreen Ave.,
Effingham
217-347-7161

Pilot Travel Center
2500 N. Third St., Effingham
217-342-3787

Petro
1805 W. Fayette Ave.,
Effingham
217-347-0480

TA Effingham
1702 W. Evergreen Ave.,
Effingham
217-347-7183

Experience the Fieldcrest Homes Difference!!



Call 217.240.0857 today for a Free Design Consultation!!

www.fieldcresthomes.com

Follow us on Facebook

WINTER IN EFFINGHAM COUNTY



*...back in
the day*

Local photographer Alfred Fitch took this photo of a one-horse open sleigh at the home of Benson and Jennie Wood in 1898.

BY JANE LOY RIES
PHOTOS COURTESY EFFINGHAM COUNTY MUSEUM

W people often talk about “the good old days.” However, sometimes conditions were not that great back then. Several of the pictures I’m sharing in this article are from the period of 1896 to 1898 and were taken by Alfred Fitch. However, the one of the root cellar was sent to me and I do not know what year it was taken.

In this article, I’m sharing about the days of root cellars, cutting ice on the pond, and winter travel in a one-horse open sleigh.

My grandma, Joan (Peters) Loy was born in 1894, so she experienced using a root cellar, as well as watching the men cut ice, and traveling in a sleigh, buggy or wagon in the winter.

I never had to use a root cellar, but my grandma talked about them. She did not miss having to use one. I only have one picture and it shows a root cellar that was built into the side of a hill. Some people who had a storm cellar also used it as a root cellar. Root cellars and storm cellars both had a dirt floor and dirt walls. People back then were counting on the colder temperatures underground to help them store different produce so it would keep for a longer time.

Before refrigeration and canning, the root cellar was an essential way to keep carrots, turnips, beets, parsnips, potatoes, onions and other root vegetables fresh through the winter months. Thicker skinned apples such as Granny Smith could be kept in root cellars, too, but not anywhere near the onions — because an onion apple is just plain not tasty. Even a thicker-skinned apple like Granny Smith would absorb that odor.

Root cellars died out when canning came into vogue. However, root cellars lasted longer in the rural areas because many times the rural areas were the last to get electricity.

I remember my grandma talking of root cellars and how near the end of the season the vegetables took on the smell and taste of dirt. She also

told of how they would wrap tomatoes and apples up in newspapers before putting them in the root cellar.

One thing I know for sure: Grandma said that’s why it was considered such a luxury to get an apple or an orange in your stocking at Christmas because those things were “as scarce as hens’ teeth” in the winter months. I think we take many things for granted, but looking at the photo of the old root cellar reminds us that things were much different not all that long ago.

Another thing that happened “back in the day” was cutting ice on the local ponds. With this article are a few of the pictures taken by Alfred Fitch of men cutting ice in Effingham County circa 1898. When these pictures were taken, ice was a luxury. The old saying was, “The rich get their ice in the summer and the poor get their ice in the winter.”

Cutting ice in the winter was hard work. If you were doing it to sell, it took a lot of men. That’s because they wanted to cut as much ice as they could in order to sell it. Ice could only be cut when there was a prolonged cold spell because they would drive horses and wagon on the ice in order to move the ice into storage.

The men back then did not have the luxury of the warm clothing and gloves available to us now, but they made do with what they had in the bitter cold.

The men had long saws to cut down into the ice. The ice was then scored into blocks, cut with a cross-saw, speared, and moved to the wagon. Once it got to the ice house, usually located close to the pond, it was packed in layers of sawdust. The ice house would have a foot of sawdust on the floor, then a huge block of ice followed by more sawdust up to 12 inches and they kept layering it until there was no more room left. They packed it that way to try and preserve the ice for as long as possible because ice was worth more in warm weather.

Most of the towns in Effingham County had ponds that they used for cutting the ice in winter. I have seen pictures from Altamont that showed cutting ice in the winter. Most people that owned an icebox

ordered some ice to cool down drinks and food in the warmer months. Most towns had an iceman who sold and delivered ice. Children would often run after the iceman's wagon on a hot day begging for a free piece of ice. If he felt like it, the iceman would chip off some small pieces and give some to the children.

Those who could afford it would buy it by the pound when the iceman came by. You would put a sign out that said how many pounds you wanted. If you were lucky enough to have an icebox, you treated it with respect and opened it sparingly. The iceboxes were usually made of oak and were often lined with zinc or tin. The ice itself came from ponds, so it often was not overly clean or contained debris. Ice meant food could be stored longer without spoiling.

Grandma said her family bought ice when they lived in town, but when they lived in the country, you either cut your own ice or you were out of luck unless you made the long trip to town.

It was the 1920s before refrigerators started becoming available. However, many in the rural areas didn't have electricity yet, so they used iceboxes for a much longer period of time. When the Great Depression hit in 1929, many people reverted to their iceboxes as a cheaper alternative. So, the next time you add ice to your glass think about the people of Effingham County for whom ice was a luxury "back in the day."

Transportation in the winter was difficult, to say the least. If there was a lot of snow, it was easier to get around in a sleigh. The picture I have of a one-horse open sleigh shows one that belonged to Benson and Jennie Wood of Effingham. It is shown in front of their house at the corner of Third and National Street in Effingham. If a buggy or wagon had to be used in snowy weather, it was quite risky to keep either one on the road whereas a sleigh could glide through the snow much better than a buggy or a wagon.

If you had to travel in the winter, heavy blankets were always taken along because the sleighs, buggies and wagons were open and not heated. Often the women would wear a hat with a heavy veil to keep the snow, ice or even mud from hitting them in the face. Flat-irons, rocks or even freshly baked potatoes were heated up and kept at their feet or in their laps in an attempt to keep warm. Often, if they had to go far, a blanket was put on the horse too.

Grandma said she bundled up with about all of the warm clothing she owned if she had to travel in the winter back then. She preferred a flat-iron to heat with because she said it stayed warm much longer than a rock or a baked potato. Grandma also said that as soon as you got home, you heated up the flat-iron again because none of the bedrooms were heated. So right before you went to bed you tucked a wrapped-up flat-iron at the foot of your bed to help warm you up in the cold bedroom. Grandma said it was hard to sleep if your feet were cold and that is still true today!

Yes, I love history and learning about the way things were, but I'll keep my modern conveniences that I have now. I love to store food in the freezer and have canned goods in my pantry. I also love to open up the refrigerator freezer and add ice to my drink and know that it's clean ice. Last, but not least, I love to travel in my car with heated seats and the heater set at the temperature that I desire.

One thing that I do like back then: I never store my apples near the onions!

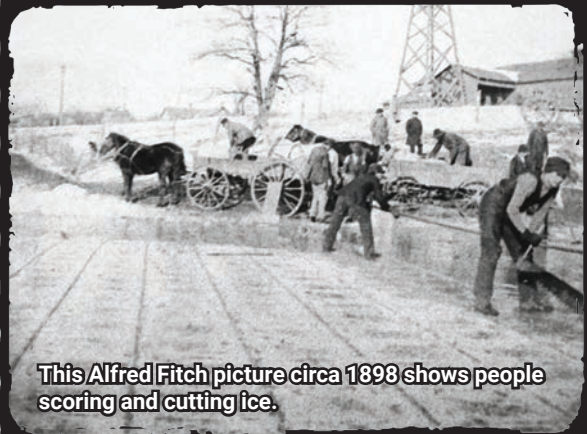
Things were much different back then and I only touched on three things that have changed. Take time to see what has changed from when you were younger to now. Never did I dream that my phone would be a miniature computer that I carried in my hand, or that I could cook food in a microwave in a fraction of the time it took me when I was a youngster.

Yes, things change and I appreciate the modern conveniences we have now. But I still love to share about the history of the way things were "back in the day."

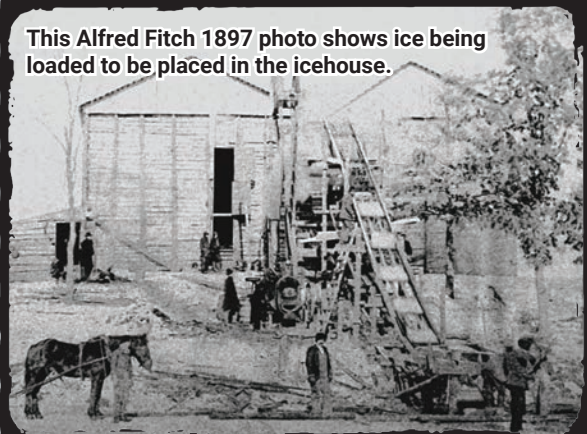
Root cellar in Effingham County, date unknown.



This Alfred Fitch picture circa 1898 shows people scoring and cutting ice.



This Alfred Fitch 1897 photo shows ice being loaded to be placed in the icehouse.



This Alfred Fitch photo shows ladies bundled up for winter in 1898.



"Helping People Off The Roadway Since 1983"



**Tony & Ronnie
Lundin,
New Owners**

Celebrating 43 Years of Heartland Towing and Recovery being in Business!



24 HOUR TOWING SERVICE

Quick response to your call for help!

Did you get involved in a minor accident?

If your vehicle is stuck in a ditch, we can quickly come to your rescue and recover and tow your vehicle from the ditch! Safety is our top priority, and we'll see to it that you and your vehicle are rescued safely.

**Give Us A Call
For All Your Towing Needs.....
From Small to Large Trucks to
Cars and Farm Implements**



**Towing • Recovery • Roadside Assistance
Storage & Warehouse**

- 24 HOUR TOWING SERVICE -

888-522-5610 or 217-342-5610

1909 West Evergreen Ave., Effingham

www.heartlandtowingrecovery.net



EFFINGHAM COUNTY ELECTED OFFICIALS

Effingham County Building
101 N. Fourth St., Ste. 301
Effingham, IL 62401
217-342-4990



Effingham County Treasurer



Deborah Ruholl
Phone: 217-342-6844

County Clerk & Recorder



Michelle M. Kollmann
217-342-6535

Effingham County Sheriff



Paul Kuhns
101 N. Fourth St.
Phone: 217-342-2101
Jail and booking: 217-342-3866
Civil process: 217-342-8467

Effingham County Coroner



Kim Rhodes
101 N. Fourth St., Ste. 401
Phone: 217-342-4651

Effingham County Board



District A -
Norbert Soltwedel
nsoltwedel@effinghamcountyil.gov
217-868-2833



District B -
Joshua Douthit, Chairman
jdouthit@effinghamcountyil.gov
217-821-4982



District C -
Tim Ellis
tellis@effinghamcountyil.gov
850-867-0077



District D -
David Campbell, Vice Chairman
adworkspub2@gmail.com
217-493-9056



District E -
Christopher Keller
ckeller@effinghamcountyil.com
217-343-1024



District F -
Michael Buzzard
mbuzzard@effinghamcountyil.com



District G -
Doug McCain
dmccain@effinghamcountyil.com
217-821-6170



District H -
Sandra Rich
srich@effinghamcountyil.com
217-821-2358



District I -
Jeremy Deters
jdeters@effinghamcountyil.com
217-663-0011



EFFINGHAM COUNTY ELECTED OFFICIALS

City of Altamont
202 North Second Street
Altamont, Illinois 62411
618-483-5212

CITY COUNCIL

Michael Walker, Mayor

COMMISSIONERS

Zain Parker
Terry White
Larry Taylor

To contact the mayor or a commissioner: info@altamontil.net

CITY CLERK AND TREASURER

Sarah Stephen

POLICE DEPARTMENT

202 North Second Street
Altamont, IL 62411
(618) 483-6219
Police Chief Alan Heiens

ALTAMONT FIRE PROTECTION DISTRICT

109 W. Jefferson Ave.
Altamont, IL 62411
618-483-6161
Fire Chief Jon Becker

Village of Beecher City
108 S George St.
618-487-5315

Village board meetings are at the Kluthe Center on the 3rd Monday of the month at 7 p.m.

PRESIDENT

Jason Wells

TRUSTEES

Janet Lorton
Dail Schonschack
Leslie Wood
Denise Childress
Doug Ray
Stacey Bowlin

VILLAGE CLERK

Terri Doty

TRI-COUNTY FIRE PROTECTION DISTRICT

101 E Poplar St, Beecher City
(618) 487-5700
Chief: Doug Ray
dray@scottspet.net

Village of Dieterich
109 N. Main St.
PO Box 243
Dieterich, IL 62424
217-925-5410

The Village Board meetings are on the first and third Monday of each month. Meetings are in the Dieterich Civic Center at 201 W. Virginia St. and begin at 6:30 p.m.

PRESIDENT

Brad Hardiek
bhardiek@dieterichillinois.com

TRUSTEES

Matt Flowers
Stacey Welter
Pamela Hartke
Frederick Bray
Berdeena Leturno
Carrie Galbraith

DIETERICH VILLAGE CLERK AND ECONOMIC DEVELOPMENT COORDINATOR

Brittney Gipson

DIETERICH FIRE PROTECTION DISTRICT

100 Zumbahlen Ave, Dieterich, IL 62424
217-925-5155
Fire Chief Ross Martin

Village of Edgewood
405 Route 37
P.O. Box 111
Edgewood, IL 62426
618-238-4260

PRESIDENT

James R. Phillips

TRUSTEES

Lisa Merritt
John Limes
Gloria Hisson
Carissa Phillips
Carla Sowers
Jeff Leasher

CLERK

Karen Mahaffey

TREASURER

Rachel Prather

Town of Mason
613 Independence St.
618-238-4571

MAYOR

Sandra Henderson

TRUSTEES

Vivian Cain
Donald Leasher Jr
Bruce Sowers
Josh Lovett
Taylor Flowers

TREASURER

Lisa O'Leary

TOWN CLERK

Tina Moore

Village of Montrose
203 W. National Road
217-924-4300

PRESIDENT

Brad Horton

TRUSTEES

Laura Schorman
Mary Lilley
Lonnie Loy
Brenda Westjohn
Micki Esker

CLERK

Holly Huber

TREASURER

Cherie Englebart

Village of Shumway

PRESIDENT

Jerry Herrmann

TRUSTEES

Joseph Kemme
Jason Herrmann
Brian Sandschafer
David Thies
Matthew Harder
Steve Sutter

CLERK

Linda Moore

TREASURER

Linda Radloff

Village of Teutopolis
106 W Main St.
217-857-3543

VILLAGE BOARD

Village board meetings are on the first and third Wednesday of the month at 7 p.m. in the Village Hall.

PRESIDENT

David Repking

TRUSTEES

Daniel Zerrusen
Bernard Hartke
Christian Mette
Robin Imburgia
David Tegeler
Greg Oseland

VILLAGE CLERK

Amy Vahling

TREASURER

Serena Buzzard

TEUTOPOLIS POLICE DEPARTMENT

106 W. Main St.
Teutopolis, IL 62467
217-857-3543
Police Chief Jeff Bushue

TEUTOPOLIS FIRE PROTECTION DISTRICT

215 W. Main St.
Teutopolis, IL 62467
217-203-0746
Fire Chief Tim McMahon

Village of Watson
204 N. Monroe

PRESIDENT

Duane Sapp

TRUSTEES

Rhonda Goeckner
Kurt Hagen
Kevin Koester
Colby Higgs
Austin Hartke
John Flack

CLERK

Tom Freeman

TREASURER

Judy Weiffenbach

EFFINGHAM CITY ELECTED OFFICIALS

The City of Effingham is a non-home rule unit which operates under a commission form of government. The City Council is comprised of a mayor and four commissioners who are elected for four-year terms.

An appointed city administrator who serves at the direction of the mayor and City Council assists the City Council with the development and implementation of policy and in the administration and oversight of the day-to-day operations of the City.

Effingham is a full-service City providing law enforcement services, fire fighting and fire prevention services, liquor control code enforcement, fire code enforcement services, economic development, tourism, library, and public works services that include streets, water, sanitary sewer, storm sewer, building code, plumbing code, and electrical code.

Effingham City Council

Meetings are on the first and third Tuesdays of each month at 5 p.m. at city hall.



Mike Schutzbach, Mayor:
mschutzbach@effinghamil.com



Hank Stephens, Commissioner:
hstephens@effinghamil.com



Larry Micenheimer,
Commissioner:
lmicenheimer@effinghamil.com



Libby Moeller, Commissioner:
lmoeller@effinghamil.com



Jake Niebrugge, Commissioner:
jniebrugge@effinghamil.com

City Administrator: Steven Miller
City Clerk: Abbey Nosbisch
Treasurer: Bridget Polk
City Engineer: Luke Thoele
Director of Public Works: Jeremy Heuerman
City Planner: Greg Koester

Effingham Police Department

110 S. Third St.
Effingham, IL 62401
217-347-0774
Police Chief Kurt Davis

Effingham Fire Department

505 W Fayette Ave.
Effingham, IL 62401
217-342-4131
Fire Chief Brant Yochum

Department	Phone
Administration	(217) 342-5300, extension 5114
Building Official (building/construction permits)	(217) 342-5300, extension 5005
City Clerk	(217) 342-5300, extension 5364
City Treasurer	(217) 342-5300, extension 5302
Customer Service – Utility Billing	(217) 342-5366
Economic Development	(217) 342-5300, extension 4
Effingham Public Library	(217) 342-2464
Fire and Rescue	(217) 342-2555
Human Resources	(217) 342-5300, extension 5301
Parks and Recreation	(217) 342-5300, extension 5305
Police	(217) 347-0774
Public Works	(217) 342-5300, extension 5303
Tourism	(800) 772-0750



STATE AND FEDERAL OFFICIALS

Federal government



President Donald Trump (R)
The White House
1600 Pennsylvania Avenue
NW
Washington, DC 20500
(202) 456-1111



U.S. Sen. Richard J. Durbin
(D)
525 S. Eighth St.
Springfield, IL 62703
217-492-4062



U.S. Sen. Tammy
Duckworth (D)
8 S. Old State Capitol Plaza
Springfield, IL 62701
217-528-6124



U.S. Rep. Mike Bost (R)
Illinois District 12
101 N. 4th St, Ste. 302
Effingham, IL 62401
Phone: 217-240-3170



U.S. Rep. Mary Miller (R)
Illinois District 15
604 E. Main St.
Ste. G
Mahomet, IL 61853
217-703-6100

State government



Gov. J.B. Pritzker (D)
Office of the Governor
207 State House
Springfield, IL 62706
217-782-0244
governor@state.il.us



State Rep. Adam Niemerg (R)
102nd House District
107 W. Main St.
Teutopolis, IL 62467
217-813-6036
niemerg@ilhousegop.org



State Rep. Brad
Halbrook (R)
107th House District
203 N. Cedar St.
Shelbyville, IL 62565
217-774-1306
halbbrook@ilhousegop.org



State Rep. Blaine Wilhour (R)
110th House District
152 S. Church St.
P.O. Box 1
Louisville, IL 62858
wilhour@ilhousegop.org



State Sen. Chapin Rose (R)
51st State Senate District
510 S. Staley Road
Ste. D
Champaign, IL 61822
217-607-1853



State Sen. Steve
McClure (R)
54th State Senate District
410 North Monroe St.
Ste. 200
Litchfield, IL 62056
217-960-0788



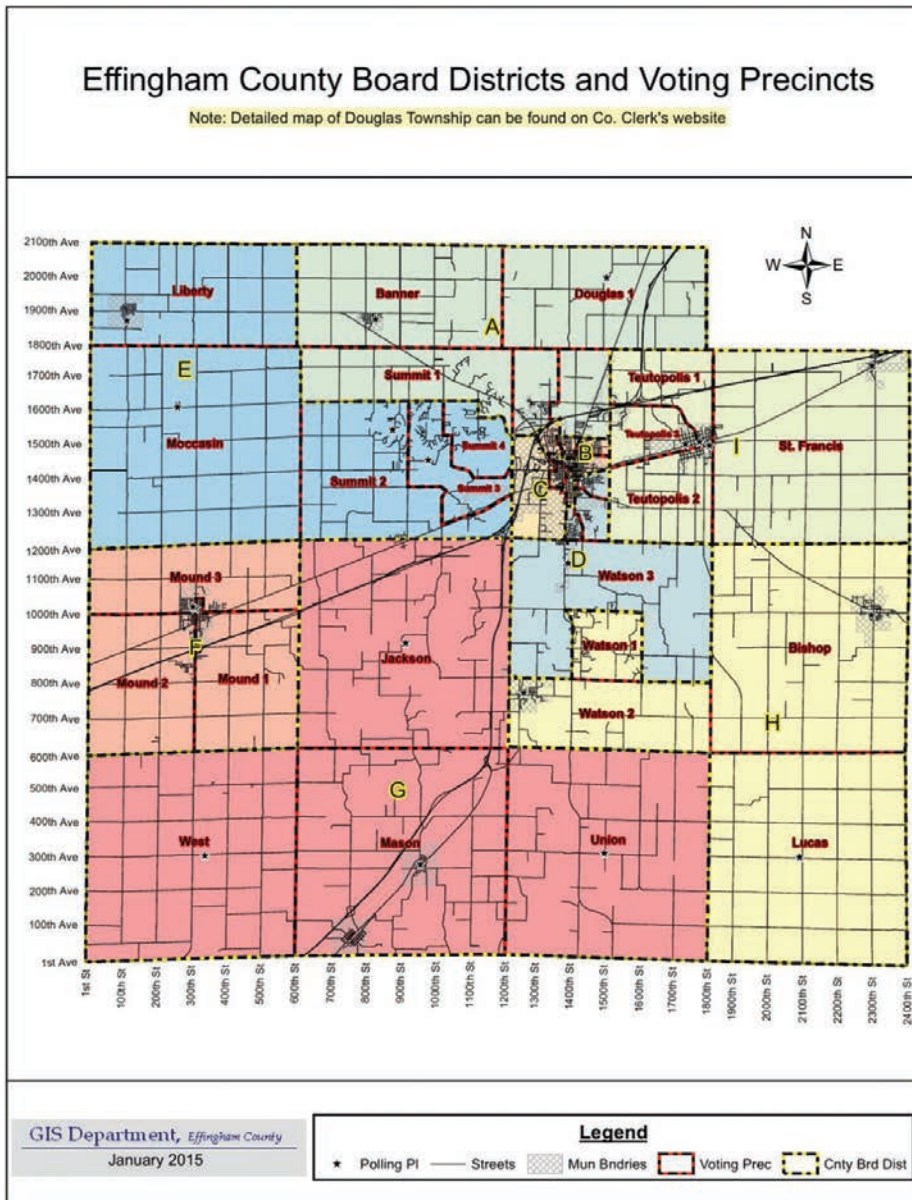
State Sen. Jason Plummer (R)
55th Senate District
310 W. Gallatin St.
Vandalia, IL 62471
618-283-3000
senator@senatorjasonplummer.com



Find your legislative districts at:
[elections.il.gov/
electionoperations/
districtlocator/
addressfinder.aspx](https://elections.il.gov/electionoperations/districtlocator/addressfinder.aspx)

VOTING PRECINCTS & POLLING PLACES

Precinct	Polling Place
West.....	West Town Hall, 3347 E. 300th Ave., Mason
Mound 1, 2, 3.....	Municipal Building, 202 N. Second St., Altamont
Moccasin.....	Moccasin Town Hall, 16014 N. 245th St., Altamont
Liberty.....	Kluthe Center, 100 Park St., Beecher City
Mason.....	Mason Civic Center, 861 E. Washington St., Mason
Jackson.....	Jackson Town Hall, N. 8995 E. 900th Ave., Effingham
Summit 1.....	Pearson Building, 15170 N. Beach Road, Lake Sara
Summit 2.....	Pearson Building, 15170 N. Beach Road, Lake Sara
Summit 3.....	Community Building, 9282 E. Park Ave., Lake Sara
Summit 4.....	Community Building, 9282 E. Park Ave., Lake Sara
Banner.....	Shumway Kluthe Center, 104 E. Front St., Shumway
Watson 1.....	Eff. Co. Emergency Services Building, 311 W. Miracle Ave., Effingham
Watson 2.....	Watson Civic Center, 103 N. Jackson St., Watson
Watson 3.....	Eff. Co. Emergency Services Building, 311 W. Miracle Ave., Effingham
Union.....	Union Town Hall, 14990 E. 300th Ave., Dieterich
Douglas 1.....	St. Mary's Parish Hall, Green Creek, 20057 N. 1525th St., Effingham
Douglas 2.....	New Hope Church, 2210 N. Raney St., Effingham
Douglas 3.....	St. Anthony High School, 304 E. Roadway Ave., Effingham
Douglas 4.....	U of I Cooperative Extension Ct., 1209 N. Wenthe St., Effingham
Douglas 5.....	St. Anthony High School, 304 E. Roadway Ave., Effingham
Douglas 6.....	St. Anthony High School, 304 E. Roadway Ave., Effingham
Douglas 7.....	St. Anthony High School, 304 E. Roadway Ave., Effingham
Douglas 8.....	St. Anthony Hospital Auditorium, 503 N. Maple, Effingham
Douglas 9.....	St. Anthony Hospital Auditorium, 503 N. Maple, Effingham
Douglas 10.....	First Baptist Church, 213 W. Fayette Ave., Effingham
Douglas 11.....	First Baptist Church, 213 W. Fayette Ave., Effingham
Douglas 12.....	Effingham Park Dist. Ron Diehl Center, 1906 S. Fourth St., Effingham
Douglas 13.....	Effingham Park Dist. Ron Diehl Center, 1906 S. Fourth St., Effingham
Douglas 14.....	Effingham Park Dist. Ron Diehl Center, 1906 S. Fourth St., Effingham
Teutopolis 1.....	Teutopolis Village Hall, 106 W. Main St., Teutopolis
Teutopolis 2.....	Teutopolis Township Town Hall, 200 S. John St., Teutopolis
Teutopolis 3.....	American Legion, 106 N. Plum St., Teutopolis
Lucas.....	Lucas Town Hall, 20950 E. 300th Ave., Dieterich
Bishop.....	Kluthe Civic Center, 102 W. Virginia St. (West entrance), Dieterich
St. Francis.....	Montrose Municipal Bldg., 208 W. National Road (Rt. 40), Montrose



All polling places handicapped accessible.

PUBLIC SCHOOLS

Altamont Unit 10
7 S. Ewing St.
Altamont, IL 62411
618-483-6195

Board of Education

Alonzo Shoaf
Dale Laue
Robert Roedl
Dane Milleville
Martin Reyes
Derek Michael Bowman
Chris Guse

To contact board members:
contactboe@altamontschools.org

Administration

Superintendent: Aaron Lock (as of July 1)
Altamont High School Principal: Peggy Bueker
Altamont Grade School Principal: Kris Biggs

Beecher City Unit 20
438 Hwy 33
Beecher City, IL 62414
Phone: 618-487-5100

Board of Education

David Doty, president
Jonathan Wakefield
Clifton J. Miller
Ryan Schaefer
Aaron Summers
Lee Roadarmel

Administration

Superintendent
Philip Lark
Beecher City Jr./Sr. High School
Principal: Carrie Burks

Dieterich Unit 30
205 S. Pine St.
Dieterich, IL 62424
217-925-5249

Board of Education

Cory Niebrugge, president
Nick Niemerg
Devin Aherin
Jon Engelbart
Thad Goebel
Anita Bierman
Frank Niemerg

To contact the school board:
schoolboard@dieterichschools.org

Administration

Superintendent: Cary Jackson
Junior-Senior High School
Dean of Students: Ryan Wohltman
Dieterich Elementary School
Principal: Josh Benefiel



Effingham Unit 40
2803 S. Banker St.
Effingham, IL 62401
217-540-1500

Board of Education

Jill Wendling, president
Brandon Duncan
Erica Boone
Desha Wear
Andrew Altman
Jane Willenborg
Chad Thompson

To contact board members:
boardofeducation@unit40.org

Administration

Superintendent: Andrew Johnson
Early Learning Center
Principal: Lacy Althoff
East Side Preschool
Principal: Lacy Althoff
Central School
Principal: Aron Spicer
South Side School
Principal: Jessica Reeder
Effingham Junior High School
Principal: Charlie Schwerman
Effingham High School
Principal: Kurt Roberts

Teutopolis Unit 50
801 W. Main St.
Teutopolis, IL 62467
217-857-3535

Board of Education

Courtney Tegeler, President
Erin Ordner
Chandler Hewing
Kari Thompson
Laura Hemmen
Paul Hardiek
Adan Hoene

To contact board members:
unit50board@ttown.k12.il.us

Administration

Superintendent
Matthew Sturgeon
Teutopolis High School
Principal: Tanner Lawson
Teutopolis Junior High School
Principal: Pat Drees
Teutopolis Grade School
Principal: Sherry Hoehn



PRIVATE SCHOOLS

St. Anthony High School
9th thru 12th grade
304 E. Roadway Ave.
Effingham, IL 62401
217-342-6969
www.stanthony.com
Principal: Greg Fearday

St. Anthony Grade School
Preschool thru 8th grade
405 N. Second
Effingham, IL 62401
217-347-0419
www.stanthony.com
Principal: Cody Rincker

Sacred Heart Grade School
K-8th grade
Kids For Christ Preschool
Ages 3-5
407 S. Henrietta
Effingham, IL 62401
217-342-4060
www.sheff.org
Principal: Charlotte Habing



Altamont Lutheran Interparish School
7 S. Edwards
Altamont, IL 62411
618-483-6428
Administrator: Robinette Flach
Discovery Christian School
K-9
2511 S. Veterans Drive
Effingham
217-347-8982

Montessori Kids Universe
Effingham
2201 Willenborg St., Ste. 8
Effingham, IL 62401
217-559-1880

COLLEGES

Lake Land College
Kluthe Center of Higher Education & Technology
1204 Network Centre Blvd.
Effingham, IL 62401
217-540-3555
Karen Kull, Director





AUMANN AUCTIONS

SINCE 1962

**PROUDLY SERVING
THE EFFINGHAM &
SURROUNDING AREAS**



EFFINGHAM CHAMBER OF COMMERCE MEMBER

REAL ESTATE

FARMLAND

ASSETS

We make selling simple. With an experienced team, proven marketing, and full-service auction solutions, we help clients successfully sell real estate, farmland, personal property, equipment, niche collections and more! All you have to do is call.



217- 563- 2523 | WWW.AUMANNAUCTIONS.COM



Trusted Care

Growing With Your Family

From wellness visits to everyday concerns and unexpected illnesses, the Sarah Bush Lincoln pediatric team is here to support your child's health every step of the way.



Emily Kreke, PA-C | Abby Welsh, MD | Cari Fearday, PA-C

 Sarah Bush
Lincoln
Trusted Compassionate Care

SBL Bonutti Clinic
1104 West Evergreen Ave.
Suite 203
Effingham, IL

217-540-6122

www.sarahbush.org