

TRI-STATE TRACKING

ECONOMIC DATA FOR DELAWARE, NEW JERSEY, AND PENNSYLVANIA



FEDERAL RESERVE BANK OF PHILADELPHIA

Delaware Labor Conditions*

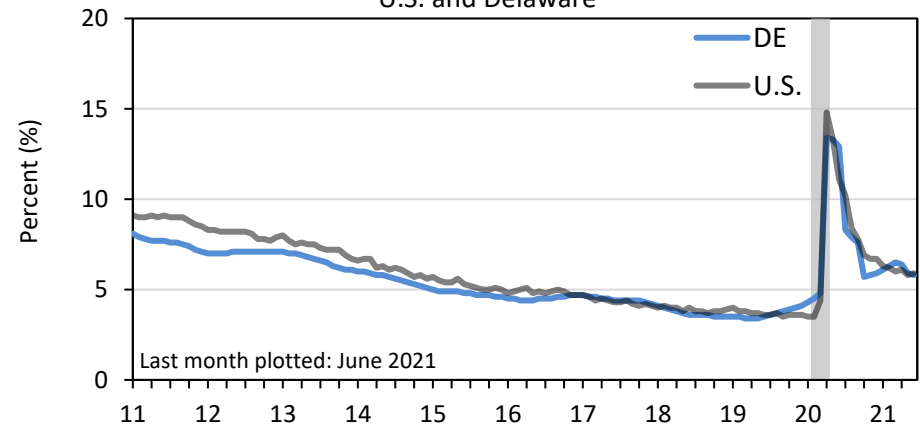
PAYROLL EMPLOYMENT (SA) June 2021	Level (000s)	Y/Y Change (000s)	Y/Y Change (%)
Delaware - Total	446.5	22.5	5.3
Mining & Construction	22.7	0.9	4.1
Manufacturing	24.5	-0.7	-2.8
Trade, Transportation & Utilities	82.6	7.5	10.0
Information	3.7	0.0	0.0
Finance, Insurance & Real Estate	46.4	-0.5	-1.1
Professional & Business Services	59.9	-0.9	-1.5
Educational & Health Services	77.9	2.4	3.2
Leisure & Hospitality	46.5	11.1	31.4
Other Services	16.4	0.9	5.8
Government	65.9	1.8	2.8
RESIDENT EMPLOYMENT (SA)			
Employed	460.4	46.1	11.1
Unemployed	28.2	-33.4	-54.2
Civilian Labor Force	488.6	12.8	2.7
Unemployment Rate (%)	5.8	-7.1	
Labor Force Participation Rate (%)	61.1	0.9	

* Monthly data. Source: [Bureau of Labor Statistics](#) via [Haver Analytics](#). Data are seasonally adjusted (SA) except for the information sector.

Note: The gray-shaded area in the charts is a period of business recession as defined by the [National Bureau of Economic Research](#) (NBER).

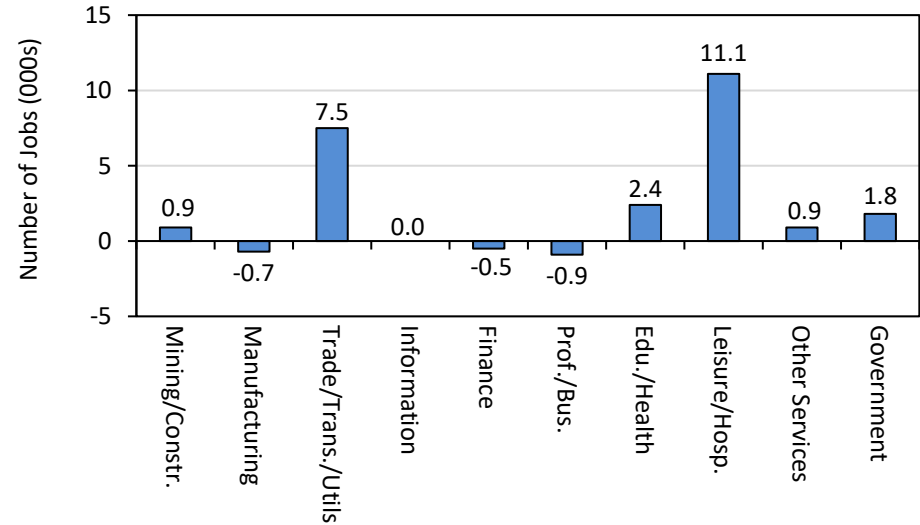
Unemployment Rates (SA)

U.S. and Delaware



Year-over-Year Payroll Employment Growth

Delaware - June 2021



TRI-STATE TRACKING

ECONOMIC DATA FOR DELAWARE, NEW JERSEY, AND PENNSYLVANIA



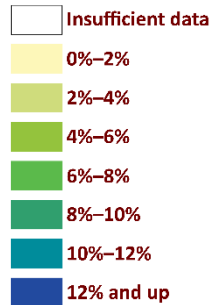
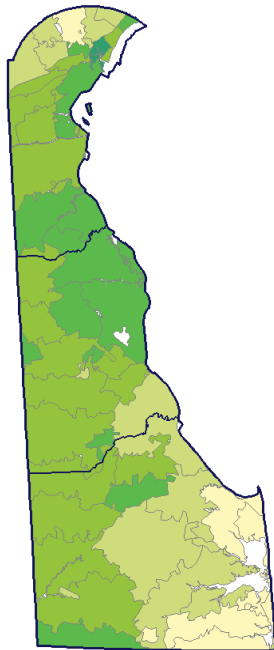
FEDERAL RESERVE BANK OF PHILADELPHIA

Delaware Housing Market Conditions

DE Seriously Delinquent Mortgages*

(90+ Days Past Due or in Foreclosure)

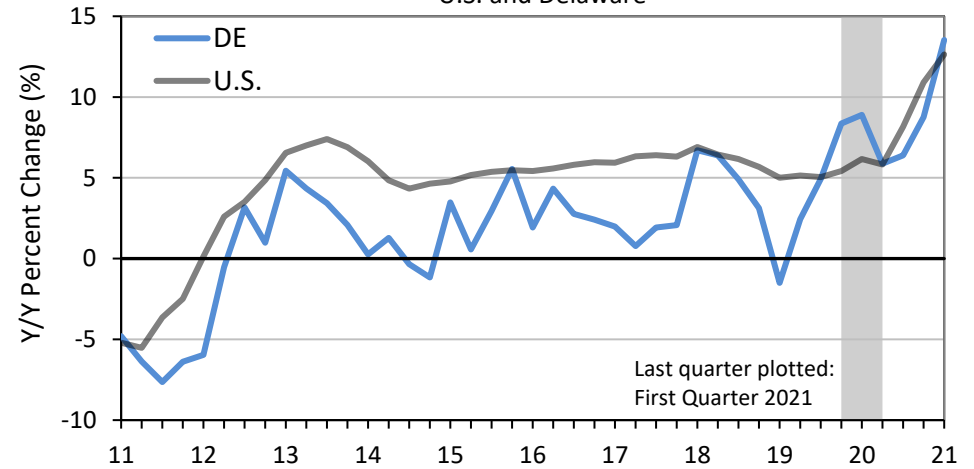
June 2021



* Monthly data. Source: [Black Knight McDash](#)
 ** Quarterly data. Source: [FHFA Purchase-Only Index](#) via [Haver Analytics](#)
 *** Monthly data. Source: [U.S. Census Bureau](#) via [Haver Analytics](#). Data are seasonally adjusted (SA) by the [FRBP Research Department](#).

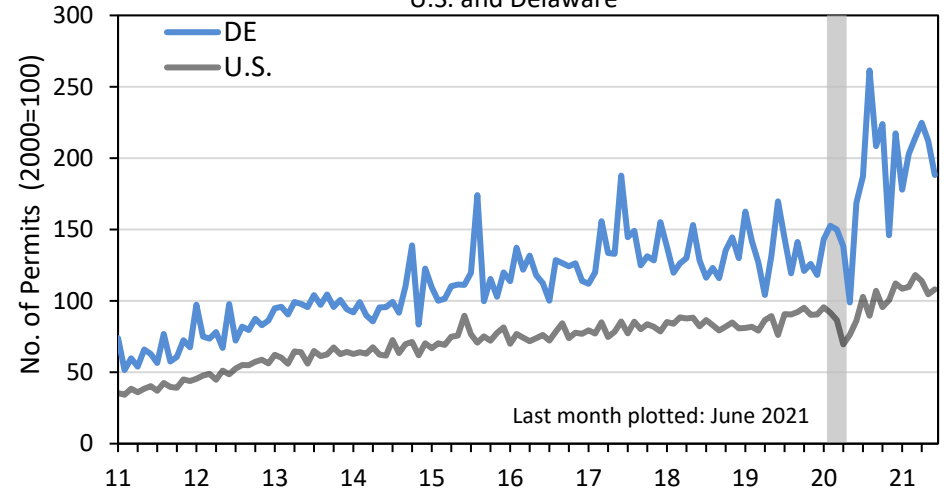
FHFA House Price Purchase-Only Index Yearly Growth**

U.S. and Delaware



New Building Permits (SA)***

U.S. and Delaware



TRI-STATE TRACKING

ECONOMIC DATA FOR DELAWARE, NEW JERSEY, AND PENNSYLVANIA



FEDERAL RESERVE BANK OF PHILADELPHIA

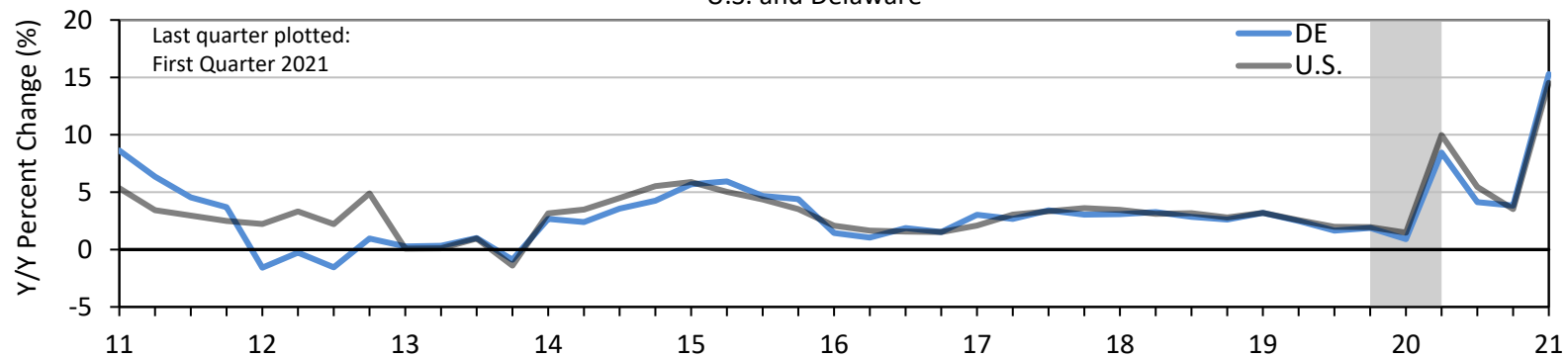
Delaware

Personal Income*

NOMINAL PERSONAL INCOME (SAAR) [†] First Quarter 2021	Level (\$Millions)	Share of Total (%)	Q/Q Change (%)	Y/Y Change (%)
Total Personal Income	63,397	100.00	12.77	17.35
Net Earnings, by Place of Residence	34,011	53.65	1.92	4.25
Earnings, by Place of Work	41,267	65.09	2.05	4.59
Total Wages & Salaries	29,132	45.95	2.25	4.56
Other Labor Income	7,073	11.16	2.00	3.48
Proprietors' Income	5,062	7.98	0.98	6.31
Less: Personal Contributions for Social Insurance	4,639	7.32	2.83	5.38
Plus: Adjustment for Residence	-2,617	-4.13	2.42	7.71
Plus: Dividends, Interest & Rent	9,608	15.16	-0.01	-2.13
Plus: Transfer Payments	19,777	31.20	49.40	70.76

[†](SAAR): seasonally adjusted annualized rate

Year-over-Year Real Personal Income Growth
U.S. and Delaware



* Quarterly data. Source: [U.S. Bureau of Economic Analysis](#) via [Haver Analytics](#)

TRI-STATE TRACKING

ECONOMIC DATA FOR DELAWARE, NEW JERSEY, AND PENNSYLVANIA



FEDERAL RESERVE BANK OF PHILADELPHIA

Federal Reserve Bank of Philadelphia Research Department

<https://www.philadelphiafed.org/surveys-and-data/regional-economic-analysis>

Contacts:

Paul R. Flora

Manager of Regional Economic Analysis

Phone: (215) 574-6649
paul.flora@phil.frb.org

Contact for:

- Regional Economy
- Beige Book

Tosmai Puenpatom

Senior Economic Analyst

Phone: (215) 574-3852
tosmai.puenpatom@phil.frb.org

Contact for:

- Regional Economy
- State Coincident Indexes
- State Leading Indexes

Adam Scavette

Senior Economic Analyst

Phone: (215) 574-3705
adam.scavette@phil.frb.org

Contact for:

- Regional Economy
- Regional Business Outlook Surveys

Elif Sen

Senior Economic Analyst

Phone: (215) 574-6424
elif.sen@phil.frb.org

Contact for:

- Regional Economy
- Regional Business Outlook Surveys