

WASHINGTON



MEMORIAL GARDENS

Community Meeting

Preserving History, Embracing the Future

Meet the Owners

Timothy Amoui and Shayda Frost



700 Jordan Ln,
Decatur 30033



History

- One of Atlanta's most historic cemeteries (previously owned by Tobie Grant)
- Recently inherited by Timothy Amoui and Shayda Frost.
- Mission: To be the best in the community at honoring our community.
- Vision: To offer the most affordable end-of-life care services in Atlanta



A 35-Acre Memorial Park



Why Rezoning + SLUP is Needed

Current Zoning Limitations:

- Restricted to cemetery use only.
- Cannot provide comprehensive funeral and cremation services on-site.

Community Needs:

- Rising cremation rates projected at 80% by 2040.
- Families need modern, convenient and affordable services in one place.

Rezone + SLUP = Community Benefits



Preservation of Legacy

Ensures Washington Memorial Gardens continues to serve as a cherished resource to the community.



Enhanced Services

Comprehensive, one-stop solution for end-of-life arrangements.

Crematory perfectly situated in the center of the 35 acre cemetery, set back from residential properties.



Good Neighbors

Operations limited to normal business hours.

No increase in traffic or noise.

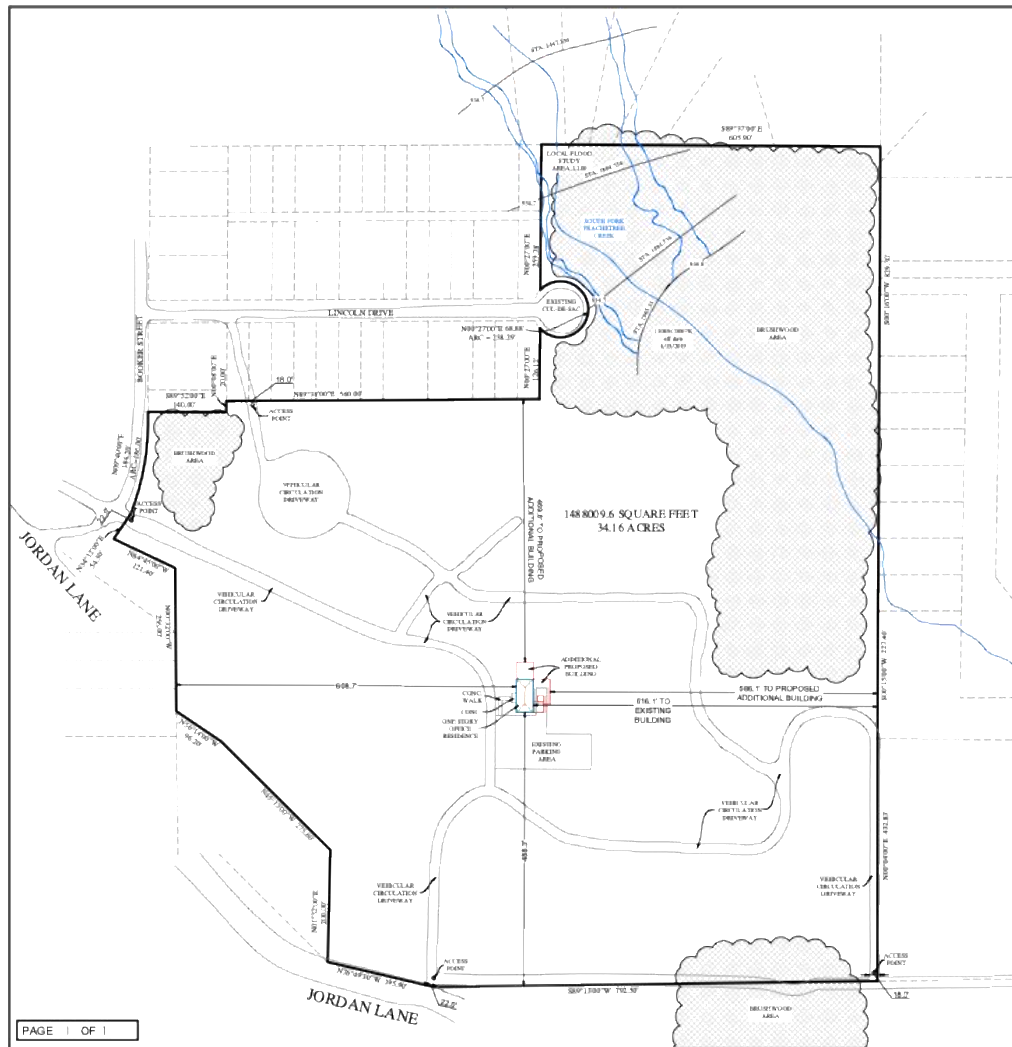
State-of-the-art facilities meeting environmental standards.

Landscaping improvements to enhance privacy.



Affordable Services

Lowest cost for funeral and crematory services in Dekalb County.



VICINITY MAP
MAY NOT SHOW LATEST IMPROVEMENTS. NOT TO SCALE.

LEGAL DESCRIPTION:

THAT CERTAIN PARCEL OF LAND SITUATED IN THE ADDRESS 700 JORDAN LANE, DECATUR, GA 30033, USA DESCRIBED AS FOLLOWS:

BEGINNING AT A POINT ON THE NORTHERLY RIGHT-OF-WAY LINE OF JORDAN LANE, THENCE RUNNING:
NORTH 76°49'30" WEST, A DISTANCE OF 195.90 FEET;
NORTH 01°32'00" EAST, A DISTANCE OF 200.00 FEET;
NORTH 45°13'00" WEST, A DISTANCE OF 275.60 FEET;
NORTH 56°14'00" WEST, A DISTANCE OF 96.20 FEET;
NORTH 00°32'00" WEST, A DISTANCE OF 256.00 FEET;
NORTH 64°45'00" WEST, A DISTANCE OF 121.40 FEET;
NORTH 34°12'00" EAST, A DISTANCE OF 54.30 FEET;
NORTH 09°40'00" EAST, A DISTANCE OF 184.20 FEET;
SOUTH 89°52'00" EAST, A DISTANCE OF 140.00 FEET;
NORTH 00°08'00" EAST, A DISTANCE OF 20.00 FEET;
NORTH 89°38'00" EAST, A DISTANCE OF 560.00 FEET;
NORTH 00°27'00" EAST, A DISTANCE OF 126.12 FEET;
NORTH 00°27'00" EAST, A DISTANCE OF 259.78 FEET;
SOUTH 89°37'00" EAST, A DISTANCE OF 605.90 FEET;
SOUTH 00°16'00" WEST, A DISTANCE OF 829.30 FEET;
NORTH 00°15'00" EAST, A DISTANCE OF 227.40 FEET;
NORTH 00°04'00" EAST, A DISTANCE OF 432.83 FEET;
SOUTH 89°13'00" WEST, A DISTANCE OF 792.50 FEET;
TO THE POINT OF BEGINNING

LOT OWNER:

PARCEL NUMBER:
18 063 09 074

SCOPE OF WORK:

ADDRESS:
700 JORDAN LANE,
DECATUR, GA 30033, USA

Scale: 1"= 200' Size: 11"x17"
Drawn By: DanPlans Date of Field Work: 01/11/2025

SITE PLAN

servicysolutions@gmail.com



Your Support Matters

Preserving Historic Legacy

Your support ensures that Washington's incredible heritage and legacy continues to thrive for future generations.

Meeting Community Needs

Our families have been asking us for years to offer cemetery, funeral and cremation in one location.

Lowering Costs for Families

Expanding our services will enable us to offer the most affordable end-of-life care services for families in need

Economic and Job Growth

Your support helps us provide employment opportunities for locals



Your Question

