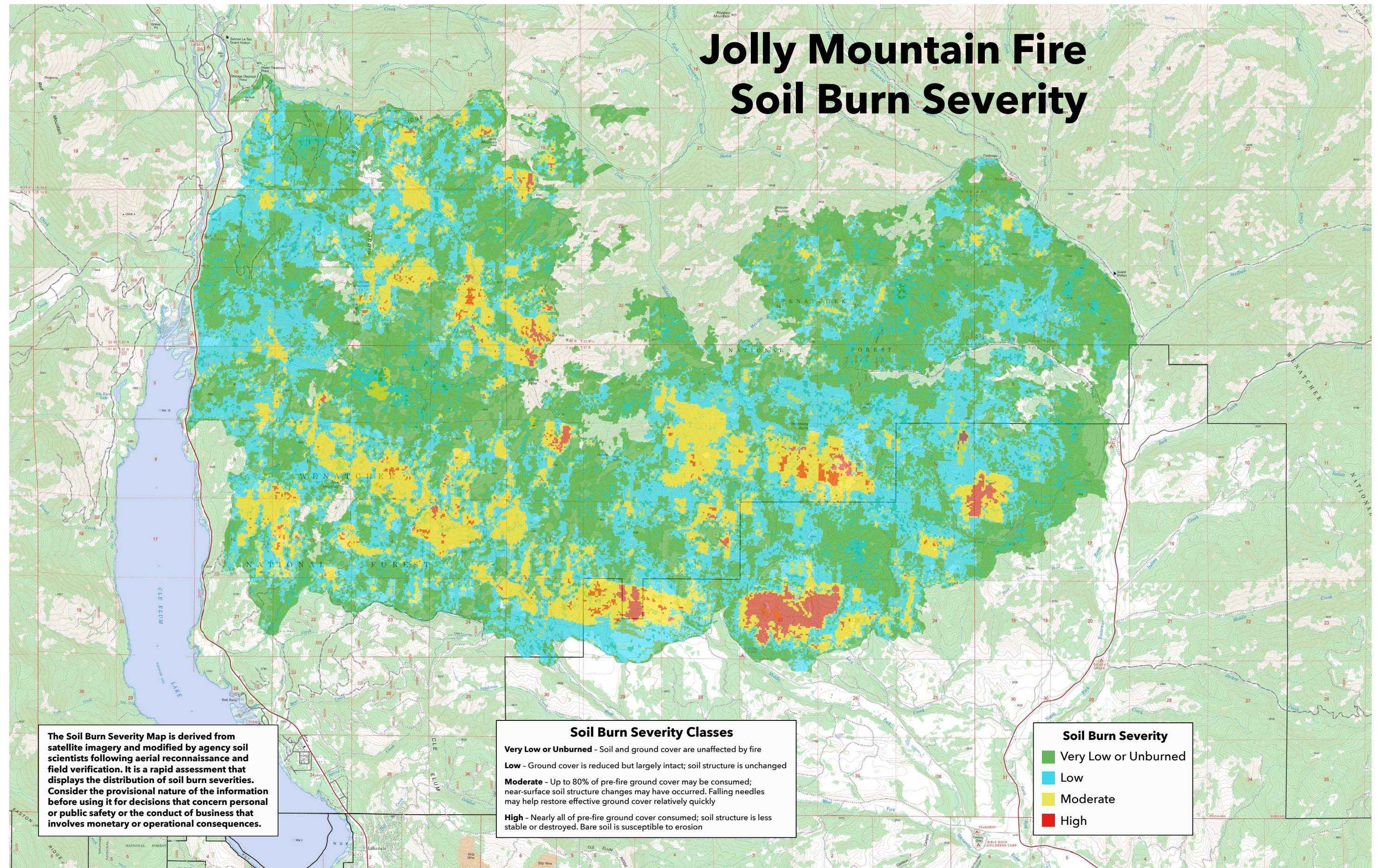


# Jolly Mountain Fire Soil Burn Severity



The Soil Burn Severity Map is derived from satellite imagery and modified by agency soil scientists following aerial reconnaissance and field verification. It is a rapid assessment that displays the distribution of soil burn severities. Consider the provisional nature of the information before using it for decisions that concern personal or public safety or the conduct of business that involves monetary or operational consequences.

## Soil Burn Severity Classes

- Very Low or Unburned** - Soil and ground cover are unaffected by fire
- Low** - Ground cover is reduced but largely intact; soil structure is unchanged
- Moderate** - Up to 80% of pre-fire ground cover may be consumed; near-surface soil structure changes may have occurred. Falling needles may help restore effective ground cover relatively quickly
- High** - Nearly all of pre-fire ground cover consumed; soil structure is less stable or destroyed. Bare soil is susceptible to erosion

## Soil Burn Severity

- Very Low or Unburned
- Low
- Moderate
- High