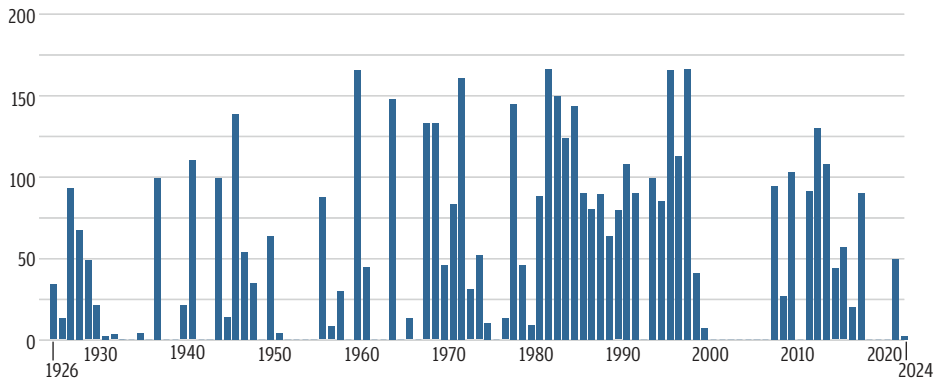


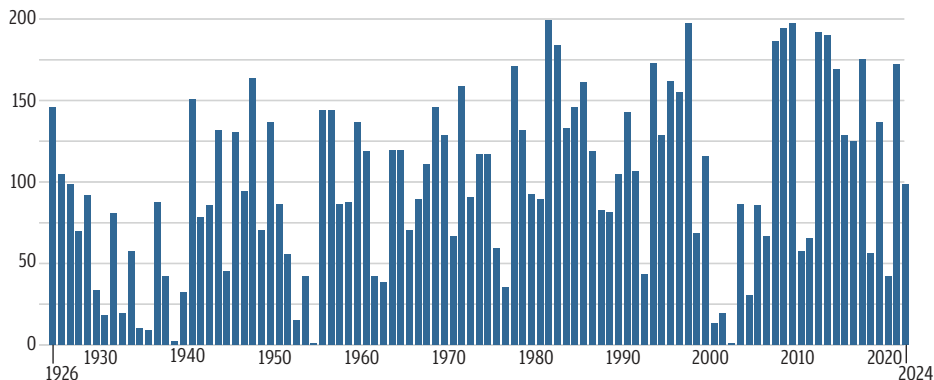
South Platte River Compact and river flows

Number of days that flows were above the respective minimums, in cubic feet per second
Interstate Station gage, Julesburg, Colorado, 1926-2025

Nonirrigation-season flows (Oct. 16-March 31) vs. prospective compact 500 cfs minimum



Irrigation-season flows (April 1-Oct. 15) vs. compact 120 cfs minimum



Sources: U.S. Geological Survey (1926-2018), Colorado Division of Water Resources (2018-present)

Lee Enterprises graphic