

YOUR TRIP

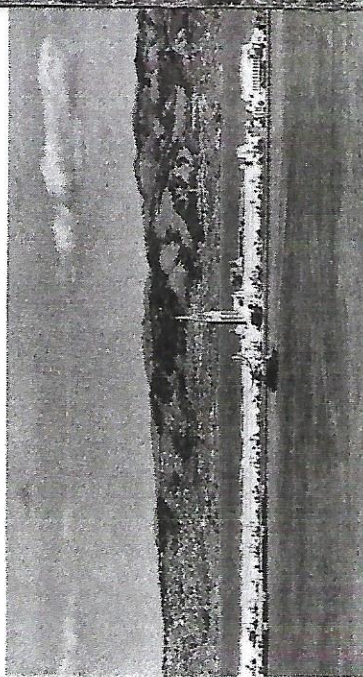
on the

Daylight

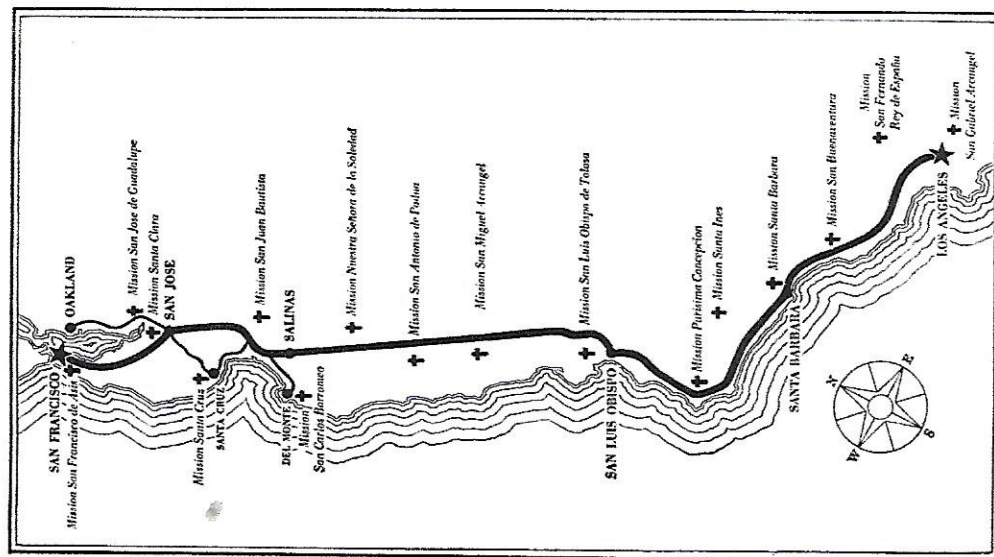
(SECOND SECTION)



LOS ANGELES' city hall overlooks a sunny metropolis of broad boulevards, lovely homes and gardens.



Golden Gate International Exposition on enchanted Treasure Island in the middle of San Francisco Bay.



FOR YOUR INFORMATION

Dining Car (*Open all day*)

The Dining Car is open continuously featuring coffee shop service at popular prices.

Plate Breakfast: 30¢-45¢-60¢.

Luncheon and Dinner: 45¢-60¢ and 75¢; including fish, fowl or meat entrée, vegetables, bread and butter, beverage, and dessert. (Dessert not included in 45¢ meals.)

Also a popular-priced selection of a la carte items.

Coffee Shop—Tavern Car

(*Open all day*)

The Coffee Shop section of this car is open all day featuring the same Coffee Shop type meals and a la carte items as served in the Dining Car.

You are invited to visit the unique Tavern, to enjoy its cozy nooks, its colored indirect lighting, and the atmosphere of good fellowship in the cocktail lounge.

News Agent

The News Agent on this train is an S. P. employee. He is interested in serving you and in making your trip a pleasant one.

During the day he will pass through the train offering candies, dates, figs, gum, tobaccos, stamps, magazines and other items for sale.

The News Agent has several items that are intended to make your trip more enjoyable and to serve as a souvenir: *View Book* of points of interest throughout California in color (price \$1.50, mailing 15¢ extra); *Playing Cards* with views along S. P.'s Four Scenic Routes, fine quality with sturdy case (price \$1.00, mailing 10¢ additional); *Sun Glasses* made of fine colored glass that will not distort the view (price for either "snap-ons" or regulars \$1.00).

Passenger Agent

A train passenger agent is on the train for your convenience and to render you assistance when needed. He is glad to answer questions and to help you with your travel arrangements.

Maid

Mothers with small children will find the maid on this train very helpful. She will prepare food, warm milk and care for children for short periods.

To our *Daylight* passengers:

With this little folder we take the opportunity of welcoming you aboard the *Daylight*. We hope you will make full use of the facilities provided for your comfort and enjoyment. You are invited to try the food and refreshments served in the coffee shop, tavern and dining car and are urged to call upon members of the train crew for assistance and information during the trip. We wish you a most pleasant journey.

Southern Pacific Company

Mi. From S. F.	No. 2-98 To Los Angeles Read Down	STATION (Elevation)	No. 2-99 To San Francisco Read Up	Mi. From L. A.	Times shown, other than stops, are approximate and for your information only.
0	Leave 8:16A	SAN FRANCISCO (8)	Arrive 6:20P	470	Five minutes away from the Third Street Station, you can see the San Francisco-Oakland Bay Bridge (the world's longest) while passing through the industrial district.
9	8:31	SOUTH SAN FRANCISCO (10)	6:05	462	Site of many nationally-known industrial companies. Roadbed to north, thru a series of tunnels and along the Bay, cost nearly a million dollars per mile to build.
16	8:38	BURLINGAME (25)	5:57	455	Here are the lovely homes and gardens, expansive villas and country clubs of wealthy socialites. In the hills farther to the west are the great estates of Hillsborough.
18	8:40	SAN MATEO (22)	5:55	453	Suburban city noted for its graceful live oaks and for the architectural beauty of its homes and public buildings. It is picturesquely located and has a delightful climate.
25	8:48	REDWOOD CITY (9)	5:46	446	City of homes and county seat of San Mateo County. Once it was important lumber center. Now its many nurseries and gardens grow and ship flowers to all parts of the country. Deep water frontage on the S. F. Bay.
30	8:53	PALO ALTO (59)	5:40	441	Just south of Palo Alto, the grounds of the Leland Stanford Junior University (especially the 90,000-seat stadium) may be seen hidden among the eucalyptus trees to the west. Also, home of former President Herbert Hoover.
44	9:07	SANTA CLARA (69)	5:26	427	University of Santa Clara, near center of town to the west, was founded in 1851 by the Jesuits. The Chapel is one of the original buildings of Mission Santa Clara (erected by the Padres in 1771) and is well preserved.
47	9:11 (Stop)	SAN JOSE (86)	5:20 (Stop)	424	(San Ho-say') Hub of the Santa Clara Valley, San Jose is known for her busy industries, particularly fruit canning. Beautiful surrounding country, especially in spring.
77	9:47	GILROY (192)	4:48	394	Gilroy is at the south end of the abundant Santa Clara Valley, far-famed for its fruit orchards. Springtime blossoms in the valley are one of California's most beautiful and colorful sights.
97	10:13	WATSONVILLE JCT. (21)	4:23	374	In the center of the rich Pajaro Valley ("Valley of the birds") famed for its apples and lettuce. Frequently in the mires near the tracks you can see white and blue herons and Chinese pheasants. Branch line from here to Santa Cruz on the ocean and to Big Trees (Sequoia Semper-virens) of the Coast Range.
107	10:26	CASTROVILLE (18)	4:10	364	Branch line extends west from here to the famous Monterey Peninsula, home of California's great resort, Del Monte, and location of historic Monterey, Pacific Grove, Carmel, Pebble Beach, 17-Mile Drive, Asilomar, etc.
115	10:35 (Stop)	SALINAS (43)	4:01 (Stop)	356	(Spanish, "salt-pits") Thriving capital of Salinas Valley. Nearby land produces lettuce, beets, other produce. Just north of city annual California Rodeo arena may be seen.
140	11:01	SOLEDAD (182)	3:33	331	(So-lay-dahd', Spanish, "solitude") Town is built on a fertile plain above the Salinas River. Across the river are the ruins of Mission (1791), Pinnacles National Monument (fantastic rock formations) is 14 miles northeast.
160	11:22	KING CITY (333)	3:13	311	The principal city and recreation center of upper Salinas Valley. Important bean, beet, grain and livestock area.
203	12:08	SAN MIGUEL (616)	2:28	268	(San-Me-gelle') South of town you can see the old Mission San Miguel, built of adobe in 1797, and located on the west side of the tracks.
213	12:17	PASO ROBLES (722)	2:18	258	(Paso de los Robles, Spanish, "pass of the oaks") Principally known for its hot sulphur springs and mud baths. Here is one of the world's leading health resorts. Curative powers of the water were known to the Indians.
224	12:27	ATASCADERO (832)	2:06	247	(A-tas-ca-day'-roh, Spanish, "deep, miry place") Misnamed by the Spanish, Atascadero is a lovely town of gardens and homes. Centers rich farming region.
232	12:39	SANTA MARGARITA (995)	1:56	239	On the northern slopes of Santa Lucia Mountains, the town is peacefully situated in a rich grazing country, dotted with oaks. It lies at head of Salinas River.
236	12:47	TUNNEL SIX (1340)	1:44	235	Longest (3,616 feet) of a series of tunnels through the mountains and highest point on the Daylight's route.
240	1:06	SERRANO (941)	1:35	231	Serrano on southern slope of Santa Lucia Mountains offers grand panorama view of San Luis Obispo Valley.
248	1:25 (Stop)	SAN LUIS OBISPO (238)	1:09 (Stop)	223	This is the half-way point on your trip. Daylight changes engines here. Both Daylights meet just north of town. An old Spanish town; its Mission was founded in 1772.

259	1:52	PISMO (36)	12:57	212	South of Pismo you can see immense sand dunes to the west. Pismo has a 1400-foot pleasure pier; it is the home of delectable Pismo clams. Here is the northern point on the Daylight's 113-mile run along the surf.
273	2:07	GUADALUPE (80)	12:37	198	(Hwa-da-loopay') Daylight circles through Casmalia Hills south of here. Guadalupe lies in productive Santa Maria Valley—beans, sugar beets, potatoes, barley and lettuce.
299	2:40	SURF (49)	12:05	172	Town is well-named for the foamy breakers seen from the Daylight windows. Grand panorama through here of mountain and seashore. Surf is junction for Lompoc, agricultural center 10 miles east.
322	3:07	CONCEPCION (108)	11:38	149	Pt. Conception, southernmost of two lighthouses, may be seen located on rocky bluffs overlooking the sea. 14 miles farther north at Arlight is Pt. Arguella Light. 5 miles north of the Pt. Arguella lighthouse are rocks on which U. S. destroyers were wrecked in 1923.
336	3:22	GAVIOTA (94)	11:23	135	Gaviota centers a rich walnut and olive growing region. Oil from San Joaquin Valley is piped here and loaded on boats. Old Mission Santa Ynez was built in 1804.
359	3:47	GOLETA (37)	10:58	112	Goleta (Spanish "schooner") lies in the center of a rich walnut and bean growing region. On the surface of the ocean here you can see floating masses of seaweed.
367	4:00 (Stop)	SANTA BARBARA (7)	10:40 (Stop)	104	City of beautiful homes, gardens, Spanish architecture on the sloping foothills of Santa Ynez Range. The Mission, founded 1786, is world-famous. Is great resort and well-known for the "Old Spanish Days" Fiesta in August.
373	4:14	SUMMERLAND (5)	10:30	98	Oil derricks here rise out of the ocean, drilled from 300 to 1,000 feet deep. Four islands seen on horizon across the Santa Barbara Channel are part of Channel Group discovered in 1542 by Cabrillo. He is buried on San Miguel. Other islands are Santa Rosa, Santa Cruz, and Anacapa.
378	4:21	CARPINTERIA (5)	10:23	93	(Car-pin-tay-rec'-ah, Spanish, "carpenter shop") was named by Padre Juan Crespe in 1769 who found Indians making dugouts. On terraces to the east overlooking the ocean grow fruit, nuts, beans.
395	4:40	VENTURA (43)	10:04	76	Here is the southern point of the Daylight's 113-mile ride along the blue shores of the Pacific. Ventura is a prospering town and popular seaside resort. Mission San Buenaventura was founded here in 1782.
404	4:50	OXNARD (45)	9:52	67	Resting on the northern slopes of the Santa Susana Mountains is this bustling community in the fertile Hueneme (Way'-nay-may) Plain noted for sugar beets and beans.
442	5:33	CHATSWORTH (952)	9:09	29	Marks the west end of the San Fernando Valley. North of Chatsworth, Daylight goes through a 7,369-foot tunnel.
460	5:56	BURBANK (555)	8:51	11	North of here, the Daylight crosses the loamy San Fernando Valley—flat green fields, fruit trees, bounded by far-away cliffs. Pipe line from Owen's River is seen from the train when it is a short distance north of Burbank.
464	6:05 (Stop)	GLENDALE (425)	8:42 (Stop)	7	The city lies to the east, its lovely homes banked on the rounded Verdugo Hills. To the west is Cahuenga Peak.
470	6:25P Arrive	LOS ANGELES (293)	8:16A Leave	0	Daylight's southern terminal is the new 11 million dollar Los Angeles Union Station, completed May, 1939. It is near the Civic Center, old Plaza and quaint Olivera St.

San Francisco: Main business area is north of station. Street cars and taxis available at station. Passengers for Northern or East-

ern points leave from Ferry Bldg., foot of Market St. Transfer made by street car, bus or taxi. Los Angeles: Business district

is southwest of station. All forms of convenient transportation available at station for points in Los Angeles area.