



**COUNTY OF SAN MATEO**  
HUMAN SERVICES AGENCY



COUNTY OF SAN MATEO  
**2024 One Day Homeless Count and Survey**

SEPTEMBER 2024

---

# ACKNOWLEDGMENTS

The 2024 One Day Homeless Count could not have been possible without the support of hundreds of volunteers, community members, homeless service provider staff, Deployment Site Captains, specialized survey teams, elected officials, and County staff. Thank you to all participants who attended trainings to prepare for their role in the Count and Survey and volunteered during the early morning to collect information that will assist the County of San Mateo and its community partners with planning and program development for homeless services. Finally, thank you to the Human Services Agency Center on Homelessness staff who planned and coordinated the event.



---

# TABLE OF CONTENTS

Executive Summary	4
Purpose	11
Methodology	12
Findings	13
Comparison of Year-to-Year Results	16
Analysis of Changes	17
Geographic information	19
Demographics and Additional Descriptive Information	22
Conclusion	32
Appendices	33
Appendix 1: Methodology	34
Appendix 2: Data Tables Submitted to HUD	39
Appendix 3: Unsheltered Homeless Survey - English	48

---

# LIST OF CHARTS, TABLES AND FIGURES

Chart 1. One Day Homeless Count – Unsheltered Count Over Time	5
Chart 2. One Day Homeless Count – Sheltered Count Over Time	5
Chart 3. One Day Homeless Count – Total Over Time	6
Chart 4. Locations of Unsheltered Persons in 2024 Count	6
Chart 5. Unsheltered Homeless Count Over Time	7
Chart 6. Unsheltered Homeless Count By Jurisdiction	8
Table 1: One Day Homeless Count Totals by Location Type and Household Type	14
Table 2: One Day Homeless Count Totals by Location Type and Year	17
Table 3: Families Experiencing Homelessness by Location Type in 2022 and 2024	18
Table 4: 2024 Unsheltered Count by Jurisdiction	19
Table 5: Unsheltered Count by Jurisdiction by Year	20
Table 6: Unsheltered Homeless Population by City compared to San Mateo County General Population	21
Table 7: Demographics by Sleeping Location	23
Table 8: Service Use by People Experiencing Unsheltered Homelessness	31
Figure 1: Unsheltered Count by Location Type	15
Figure 2: People in Institutions by Living Situation Prior to Entry	15
Figure 3: One Day Homeless Count Totals by Year	16
Figure 4: Gender of People in Adult Only Households by Sleeping Location	24
Figure 5: Race/Ethnicity of People in Adult Only Households by Sleeping Location	25
Figure 6: Gender of People in Families by Sleeping Location	26
Figure 7: Race/Ethnicity of People in Families by Sleeping Location	26
Figure 8: Comparison of Race/Ethnicity between Homeless Population and San Mateo County General Population	27
Figure 9: Percent of Adults Experiencing Chronic Homelessness by Year	28
Figure 10: Veterans as Percent of Total Adults Experiencing Homelessness by Year	29
Figure 11: Veterans as Percent of Adults by Sleeping Location	29
Figure 12: Subpopulations as Percent of Total Adults Experiencing Homelessness	30

# EXECUTIVE SUMMARY

---

## INTRODUCTION

This executive summary provides an overview of key results from the County of San Mateo's 2024 One Day Homeless Count and Survey (the "Count"). The County's Human Services Agency (HSA) coordinates the Count in collaboration with community and County partners. The 2024 Count was conducted in the early morning hours of Thursday, January 25, 2024, and in-depth surveys were collected over the course of the following week. Approximately 300 volunteers consisting of community-based providers, members of the public, City and County staff, and community expert guides conducted observational counts and surveys of people experiencing unsheltered homelessness in each census tract in the county. The County conducts the Count every two years, although the 2021 count was postponed to 2022 due to COVID-19.

The results of the Count provide one source of data, among many others, to help the County and its partners assess how best to serve households experiencing homelessness and assist them with returning to housing as quickly as possible. The results are also submitted to the United States Department of Housing and Urban Development (HUD), which compiles data from homeless counts nationwide. The Count provides data that helps inform policy-makers and providers about the homeless population and trends over time.

---

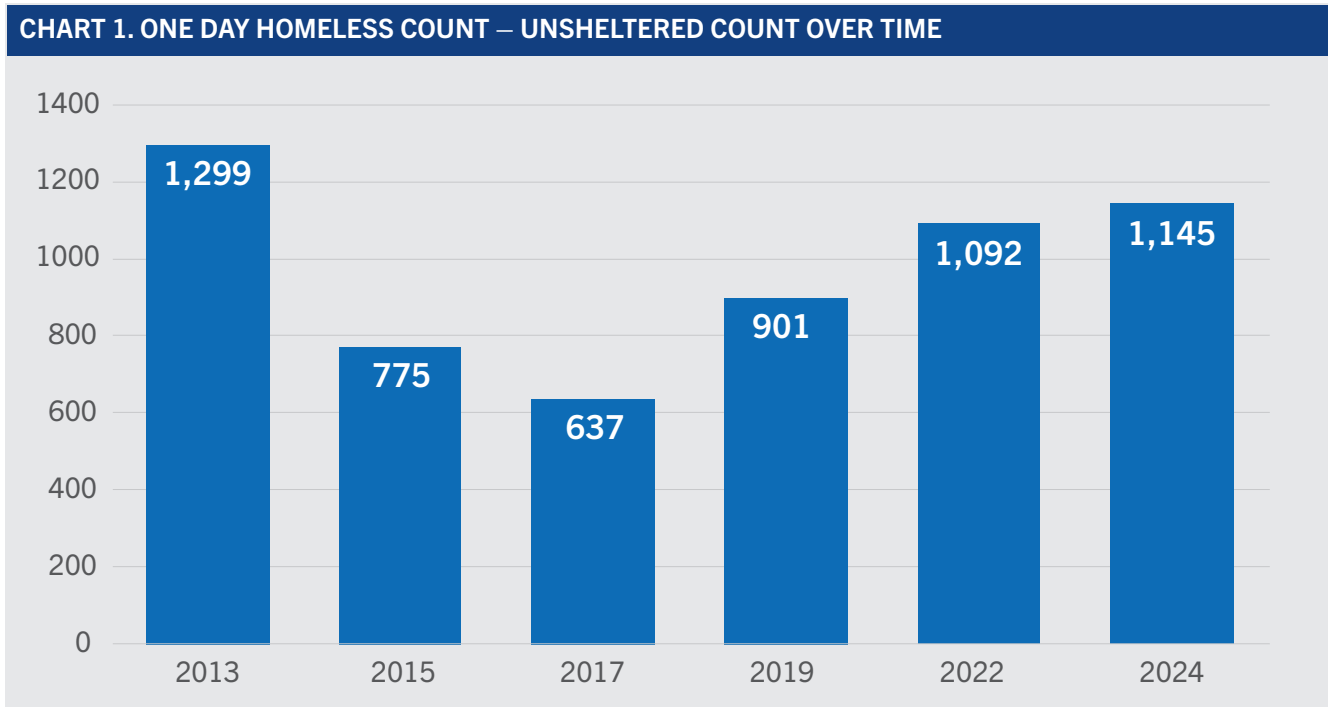
## NUMBER OF PEOPLE EXPERIENCING HOMELESSNESS

The 2024 Count found **2,130 people experiencing homelessness in San Mateo County on the night of January 24, 2024**. This number includes:

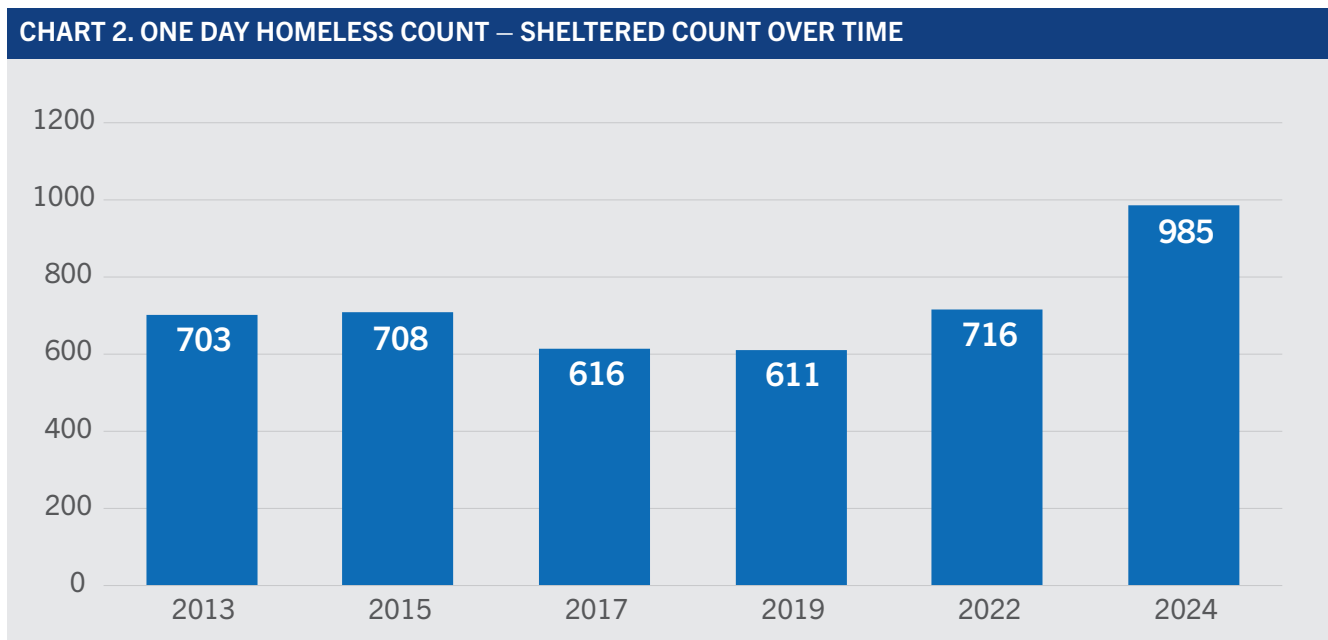
- **1,145 people experiencing unsheltered homelessness** staying on the streets, in cars, in recreational vehicles (RVs), or in tents
- **985 people experiencing sheltered homelessness** staying in emergency shelters and transitional housing programs

The number of people experiencing unsheltered homelessness in 2024 increased by 53 people (5%) compared to 2022. The number of people staying in shelter in 2024 increased by 269 people (38%) from 2022, driven by additional emergency shelter capacity that had been created by the County. So, looking at the total point-in-time count (including both unsheltered and sheltered), the finding of 2,130 people experiencing homelessness on the night of the Count is an increase of 322 people (18%) from the 2022 Count.

Charts 1-3 below show the number of people experiencing unsheltered and sheltered homelessness according to One Day Homeless Count data from 2013 to 2024.

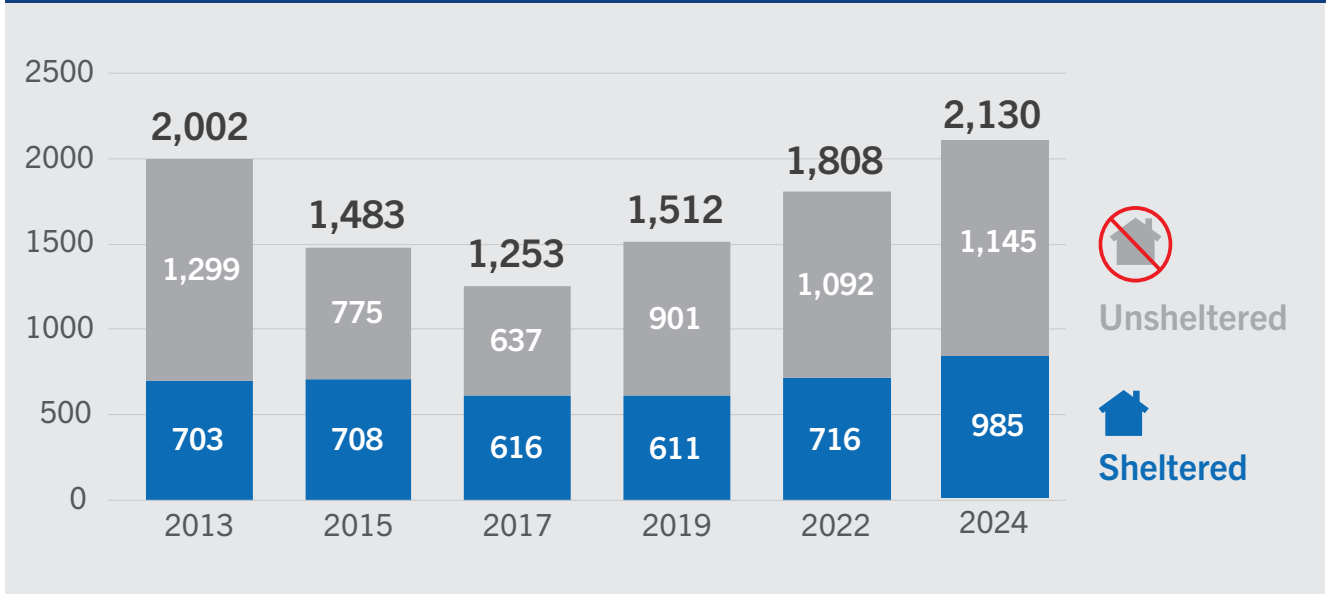


Between 2022 and 2024, unsheltered homelessness in the County increased by 5%, which is smaller than the 21% increase between 2019 and 2022.



Between 2022 and 2024, sheltered homelessness increased by 38%, driven by increased shelter capacity within the County.

**CHART 3. ONE DAY HOMELESS COUNT – TOTAL OVER TIME**

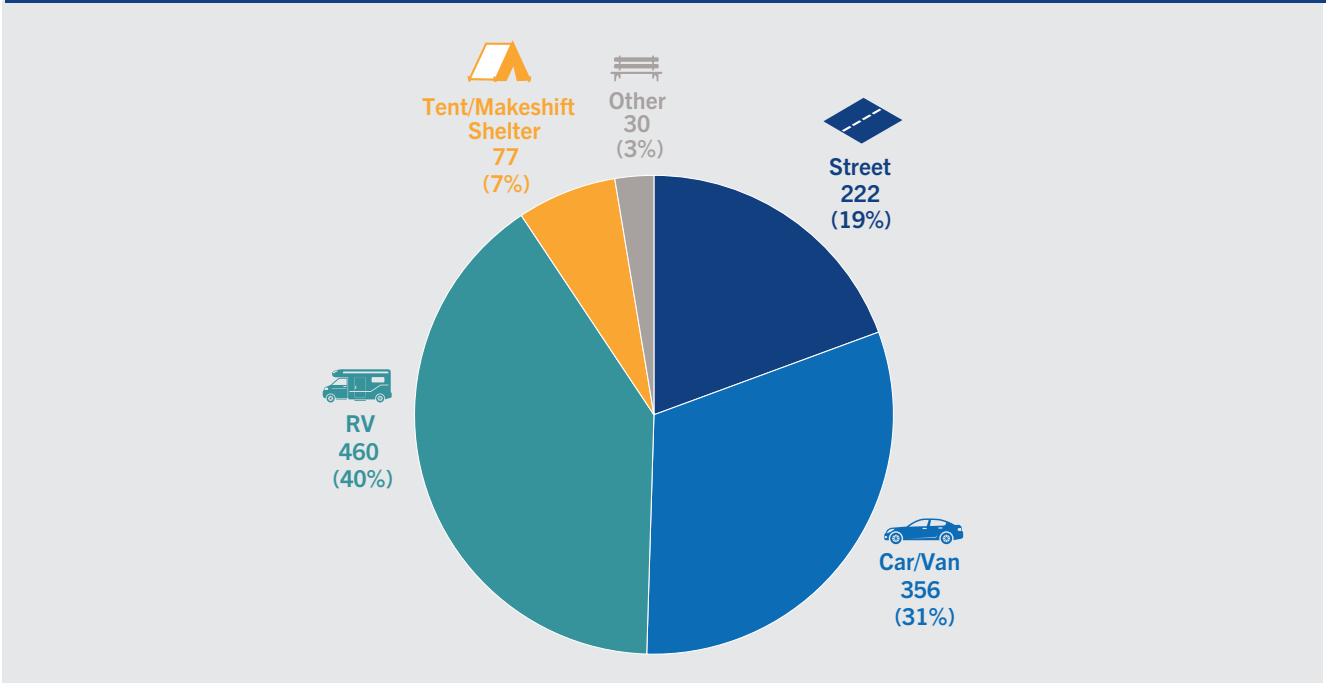


Between 2022 and 2024, the total count of people experiencing homelessness increased by 18%, driven primarily by an increase in people experiencing sheltered homelessness.

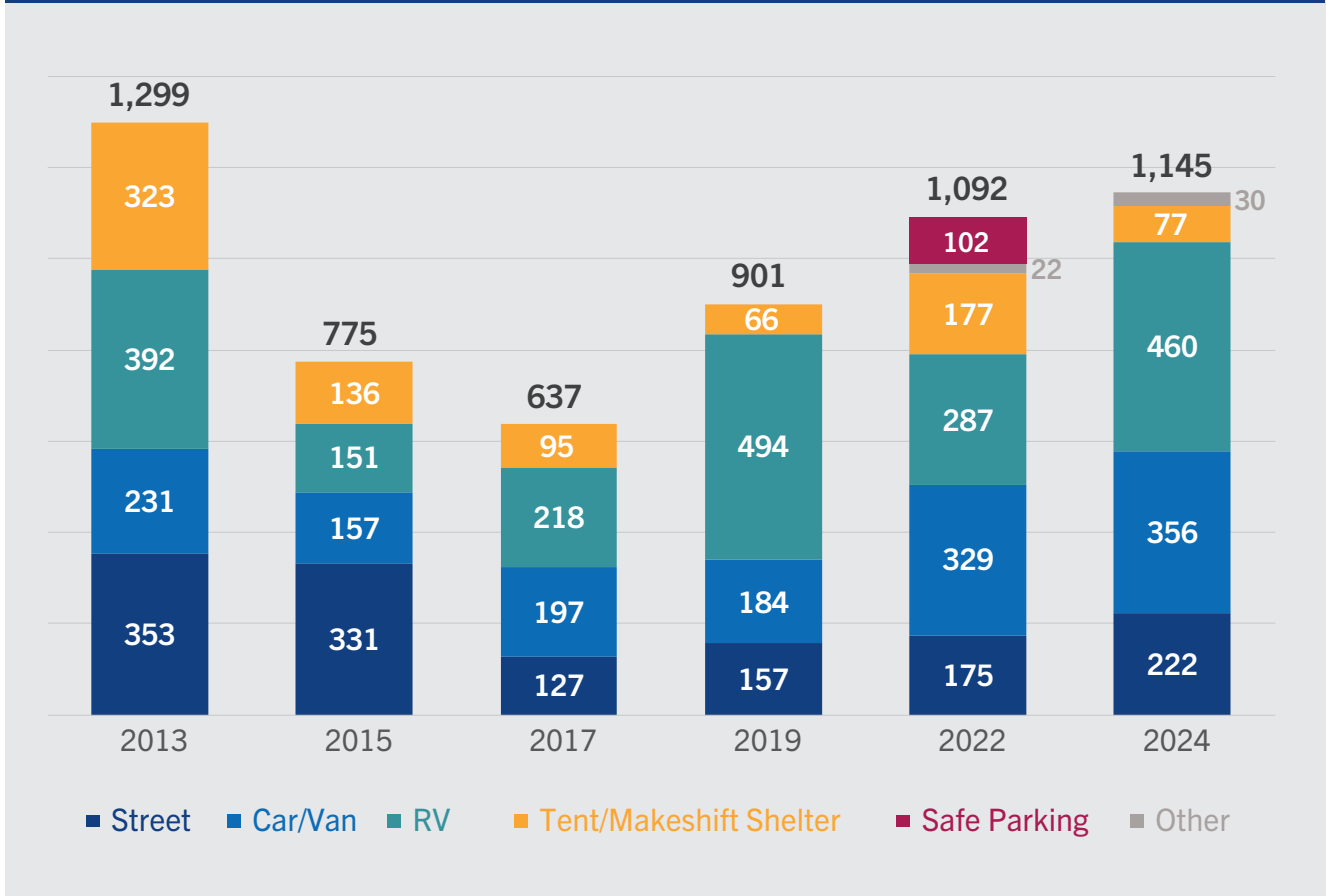
## UNSHELTERED SLEEPING LOCATIONS

The charts below show the categories of sleeping locations for individuals who were unsheltered on the night of the 2024 Count and a breakdown of sleeping locations for the Counts from 2013 to 2024.

**CHART 4. LOCATIONS OF UNSHELTERED PERSONS IN 2024 COUNT**



**CHART 5. UNSHELTERED HOMELESS COUNT OVER TIME**



*“Safe Parking” is a type of program that serves people who are residing in their vehicles. The program provides a safe designated place for people to stay in their vehicle as well as supportive services to assist the residents with working on returning to housing. At the time of the 2019 and earlier Counts, there were no Safe Parking programs in San Mateo County, and at the time of the 2022 Count, there were two Safe Parking programs which served people living in RVs. At the time of the 2024 Count, there was one Safe Parking program that operates as a scattered site program, so households enrolled in the Safe Parking program were included in the unsheltered count.*

*“Other” includes abandoned buildings, boats, and other types of vehicles/structures that are not captured under Safe Parking, RV, and Car/Van. Enhanced data collection tools in the 2024 Count allowed for improved tracking of these type of other unsheltered situations, compared to previous years.*

# GEOGRAPHIC INFORMATION

The following table summarizes the geographic locations of people experiencing unsheltered homelessness reflected in the Counts from 2013 to 2024.

<b>CHART 6. UNSHELTERED HOMELESS COUNT BY JURISDICTION</b>						
<b>Geographic Place</b>	<b>2013 Count</b>	<b>2015 Count</b>	<b>2017 Count</b>	<b>2019 Count</b>	<b>2022 Count</b>	<b>2024 Count</b>
Atherton	0	1	0	1	3	2
Belmont	43	11	3	7	13	22
Brisbane	34	21	19	4	6	11
Burlingame	13	7	21	25	10	40
Colma	7	3	1	8	1	11
Daly City	27	32	17	66	49	72
East Palo Alto	119	95	98	107	169	81
Foster City	7	0	6	4	4	4
Half Moon Bay	114	84	43	54	68	20
Hillsborough	0	0	0	0	0	0
Menlo Park	16	27	47	27	56	74
Millbrae	21	8	7	9	9	22
Pacifica	150	63	112	116	161	180
Portola Valley	2	0	1	0	0	0
Redwood City	306	223	94	221	245	189
San Bruno	98	8	26	12	63	75
San Carlos	10	20	28	30	14	29
San Francisco Int. Airport	5	1	3	21	14	23
San Mateo	103	82	48	74	60	95
South San Francisco	172	55	33	42	42	79
Unincorporated	46	32	30	73	105	114
<i>Coastside</i>		22	22	60	62	105
<i>North</i>		0	3	6	7	0
<i>Central</i>		0	0	0	0	0
<i>South</i>		10	5	7	36	9
Woodside	6	2	0	0	0	2
<b>TOTAL</b>	<b>1,299</b>	<b>775</b>	<b>637</b>	<b>901</b>	<b>1,092</b>	<b>1,145</b>

---

# CONCLUSION

The overall finding from the Count is that 2,130 individuals were experiencing homelessness on the night of the Count, which represents an increase of 18% from 2022 to 2024. The overall increase is primarily driven by an increase of 38% in sheltered individuals, while unsheltered homelessness increased by 5%.

The County and its partners have expanded homeless services in recent years, including expansions in shelters, as well as expansions in homeless outreach services, permanent housing resources, and enhanced connections between health services and homeless services. Since 2022, the County has opened two additional non-congregate shelters—the Navigation Center and El Camino House—which has created additional capacity to provide safe shelter and intensive support services to help residents move into permanent housing.

The County continues to implement strategies to increase affordable housing through new construction with set-aside units for the formerly homeless population, the Affordable Housing Fund, Homekey projects, County Housing Voucher Program, and rental vouchers. The County also continues to implement strategies such as investing in homeless prevention services, expanding homeless outreach and case management services to serve unsheltered individuals, and tailoring services to meet the needs of people experiencing homelessness who have complex health conditions.

---

\*Published by the County of San Mateo’s Human Services Agency. Data analysis by Focus Strategies. For more information, please visit <https://www.smcgov.org/hsa/center-homelessness>.



---

# PURPOSE

The County of San Mateo's Human Services Agency (HSA), in close collaboration with community partners, conducts the One Day Homeless Count and Survey every other year as required by the United States Department of Housing and Urban Development (HUD). The purpose of the One Day Homeless Count and Survey is to gather and analyze information to help the community understand homelessness in San Mateo County. This data set is one of many that provides information for monitoring trends over time and effective service and program planning to assist people experiencing homelessness and people at risk of homelessness.

HUD requires communities applying for McKinney-Vento Homelessness Assistance funds (also known as Continuum of Care or "CoC" funds) to conduct a point-in-time count of people experiencing unsheltered and sheltered homelessness every two years in the last ten days of January. The One Day Homeless Count and Survey was conducted on the night of January 24, 2024, to meet the current HUD requirement.

HSA's Center on Homelessness and the County of San Mateo's Continuum of Care (CoC) Steering Committee are responsible for overseeing this data collection effort, with assistance from a broad group of community partners, including non-profit social service providers, city and town governments, and people with former or current experience of homelessness.

---

# METHODOLOGY

The One Day Homeless Count methodology consisted of three components:

- Observational Count (Unsheltered Count)
- Unsheltered Survey
- Sheltered Count

The One Day Homeless Count (the “Count”) was conducted on the night of January 24, 2024 (i.e., from sunset on January 24 to sunrise on January 25, 2024) and in-depth surveys were collected over the course of the following week from January 25 to February 1, 2024. Volunteers that participated in the observational count and survey were recruited and trained virtually prior to the Count. On the morning of the Count, approximately 300 volunteers consisting of community-based service providers, members of the public, and city and County staff conducted observational counts of people experiencing unsheltered homelessness in each census tract in the county.

During the following week, outreach teams surveyed people experiencing unsheltered homelessness who were encountered on the street and at locations where they were receiving services. The survey was designed to elicit demographic information (i.e., age, gender, race/ethnicity, veteran status, disabilities), information about length and number of times experiencing homelessness, and about the use of benefits and services. Data collected from the surveys was also used to estimate the number of people sleeping in vehicles and structures (vehicles and structures were counted, but the people staying inside were not directly observed) and to extrapolate demographic information.

The sheltered count collected data on the number and characteristics of people who had spent the night of January 24 in emergency shelters or transitional housing. Data was also collected from institutional settings (jails, hospitals, substance use treatment programs, and mental health facilities) on the number and characteristics of people who were homeless at entry into the institution.

The One Day Homeless Count and Survey used the following definition of homelessness established in the federal McKinney-Vento Homeless Assistance Act as the basis for determining whom to include:

- An individual who lacks a fixed, regular, and adequate nighttime residence, and
- An individual who has a primary nighttime residence that is:
  - A supervised publicly- or privately-operated shelter designed to provide temporary living accommodations (including welfare hotels, congregate shelters, non-congregate shelters, and transitional housing for the mentally ill); or
  - An institution that provides a temporary residence for individuals intended to be institutionalized; or
  - A public or private place not designated for, or ordinarily used as, a regular sleeping accommodation for human beings.

This definition does not include people who are “at-risk” of homelessness (i.e., living in unstable housing situations) or those who are “couch surfing” (i.e., staying temporarily with family or friends).

Additional details about the methodology used in the One Day Homeless Count and Survey may be found in Appendix 1.

---

# FINDINGS

## Number of People Experiencing Homelessness

The 2024 count found that there were **2,130 people experiencing homelessness in San Mateo County on the night of January 24, 2024**. This number includes:

- **1,145 people experiencing unsheltered homelessness** on the streets, in vehicles (cars, vans, and recreational vehicles [RVs]), or in structures (tents, encampments, and other structures); and
- **985 people experiencing sheltered homelessness** in emergency shelters and transitional housing programs.

## Number of Homeless Households

The 2,130 people experiencing homelessness (including both unsheltered and sheltered) were members of 1,447 households, consisting of the following household types:

- 1,278 adult only households, i.e., households with adults ages 18 and older without dependent children (88.3%);
- 167 family households, i.e., households with dependent children (11.5%); and
- 2 child household, i.e., households with children and no adults (0.2%).

Table 1 below summarizes the sleeping locations where people were counted for each household type.

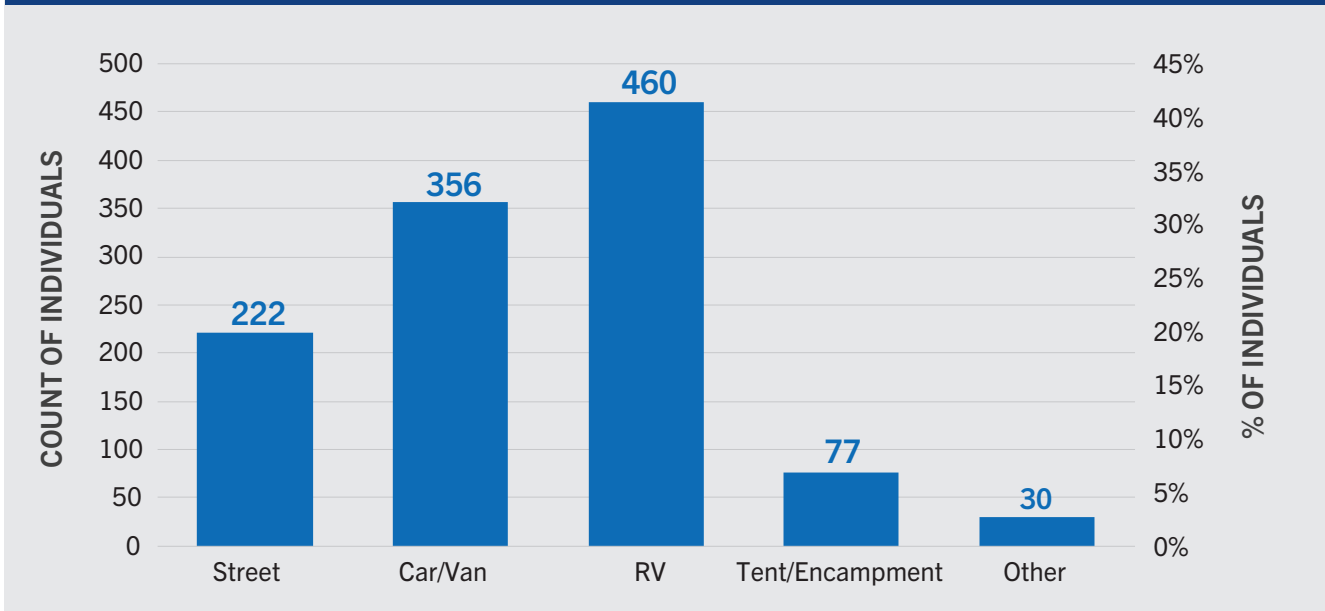
**TABLE 1: ONE DAY HOMELESS COUNT TOTALS BY LOCATION TYPE AND HOUSEHOLD TYPE<sup>1</sup>**

Location Type	Adult Only HH	People in Adult Only HH	Family HH	People in Family HH	Child Only HH	People in Child Only HH	Total HH	Total People
<b>Unsheltered Count</b>								
<b>Street</b>	187	222	0	0	0	0	187	222
<b>Vehicles and Structures</b>	579	812	37	111	0	0	616	923
<i>Car/Van</i>	276	322	12	34	0	0	288	356
<i>RV</i>	236	383	25	77	0	0	261	460
<i>Tent/ Encampment</i>	53	77	0	0	0	0	53	77
<i>Other</i>	14	30	0	0	0	0	14	30
<b>Subtotal Unsheltered</b>	<b>766</b>	<b>1,034</b>	<b>37</b>	<b>111</b>	<b>0</b>	<b>0</b>	<b>803</b>	<b>1,145</b>
<b>Sheltered Count</b>								
<b>Emergency Shelter</b>	506	524	94	313	0	0	600	837
<b>Transitional Housing</b>	6	7	36	139	2	2	44	148
<b>Subtotal Sheltered</b>	<b>512</b>	<b>531</b>	<b>130</b>	<b>452</b>	<b>2</b>	<b>2</b>	<b>644</b>	<b>985</b>
<b>TOTAL</b>	<b>1,278</b>	<b>1,565</b>	<b>167</b>	<b>563</b>	<b>2</b>	<b>2</b>	<b>1,447</b>	<b>2,130</b>

The unsheltered count also includes information about the locations where people experiencing unsheltered homelessness slept on the night of the Count: on the streets, in vehicles, or in structures. As Figure 1 below illustrates, most people experiencing unsheltered homelessness slept in RVs (40%) and cars or vans (31%). The remaining individuals slept on the street (19%), in tents and encampments (7%), or in other locations including abandoned buildings, boats, and other uncategorized vehicles or structures (3%).

<sup>1</sup> "Other" includes abandoned buildings, boats, and other types of vehicles/structures that are not captured under RV, Car/Van, or Tent/Encampment.

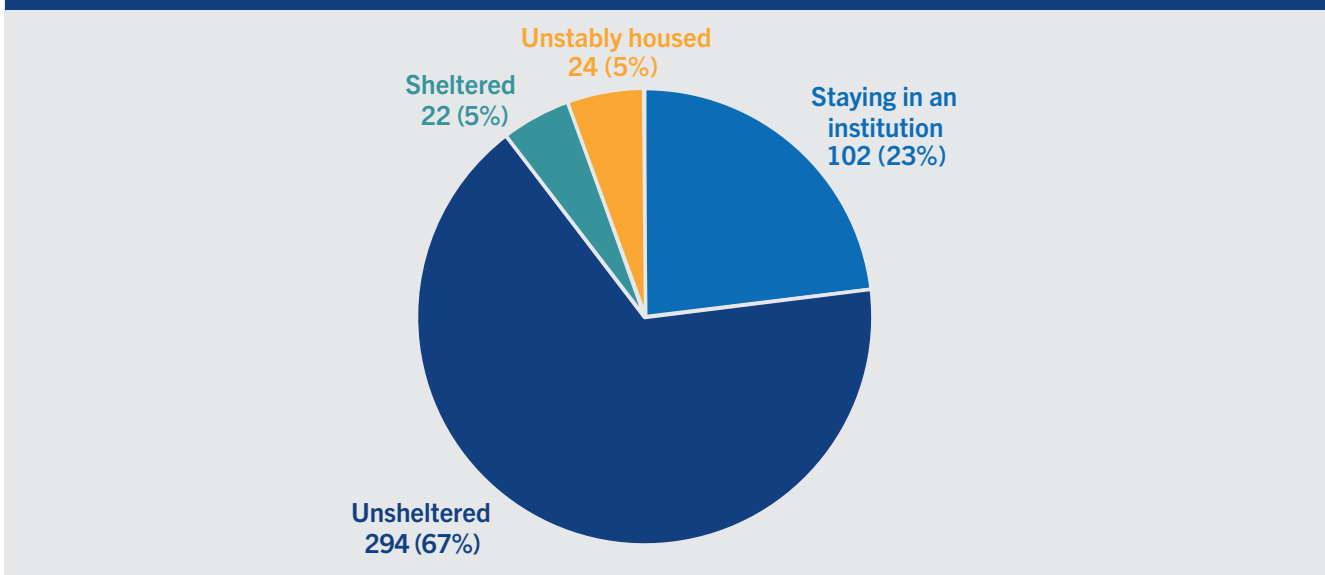
**FIGURE 1: UNSHELTERED COUNT BY LOCATION TYPE**



### Number of People Experiencing Homelessness and Staying in Institutions

The Count also collected data from institutions on the night of January 24, including jails, hospitals, substance use treatment programs, and mental health facilities to determine the number of people who were experiencing homelessness or unstably housed immediately prior to entry into the institutions. Twenty-six institutions submitted data indicating that 442 people had been experiencing homelessness prior to entering the institutions. Previous living situations were categorized as follows: staying in an institution, unsheltered, sheltered, or unstably housed. Figure 2 illustrates the relative proportion of people who entered institutions from each of these locations. Data from institutions are included here for additional context and are not included in the total number of people experiencing homelessness in this report or in the data reported to HUD.

**FIGURE 2: PEOPLE IN INSTITUTIONS BY LIVING SITUATION PRIOR TO ENTRY<sup>2</sup>**



<sup>2</sup> The 102 people reported as staying in an institution previously were counted by institutions as people previously homeless or unstably housed but who had been in another institution immediately prior to entry.

# COMPARISON OF YEAR-TO-YEAR RESULTS

## One Day Homeless Count Totals Over Time

Figure 3 displays the total number of people counted in unsheltered and sheltered locations as of the night of the Count from 2013 to 2024. The total number of people experiencing homelessness in 2024 was higher than all Counts since 2013.

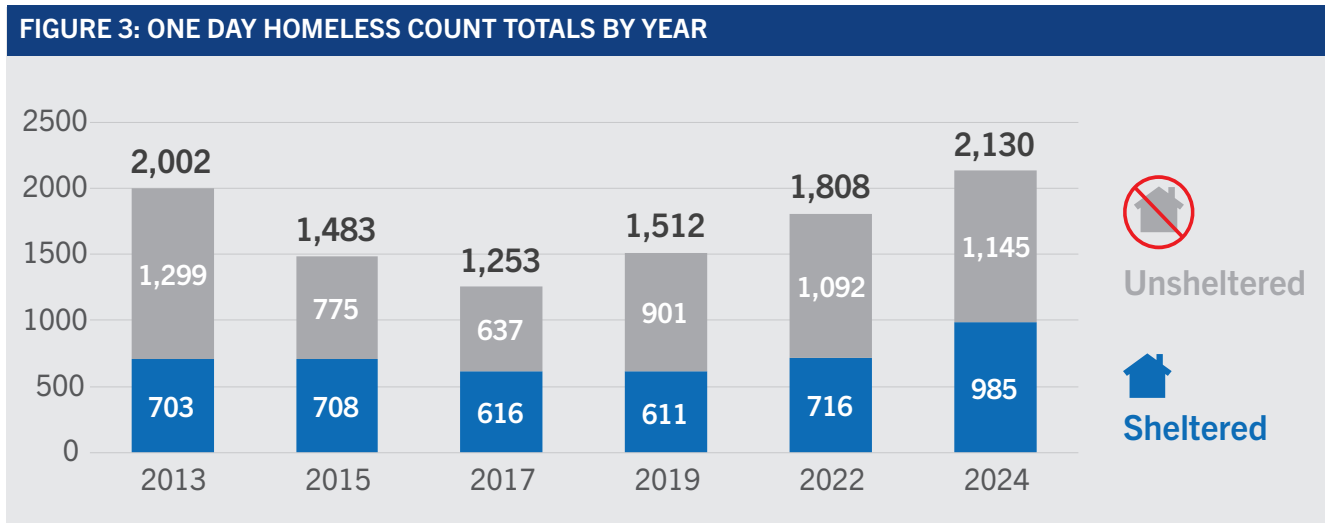


Table 2 summarizes count totals by location type for the six most recent Counts. Compared to 2022, there were decreases in the numbers of people staying in tents or encampments (177 to 77). Additionally, there were increases in the number of people staying in all other location types, including people sleeping on the street (175 to 222), in cars and vans (329 to 356), in RVs (287 to 460), in emergency shelters (582 to 837), in transitional housing (134 to 148), and in other locations (22 to 30) in 2024. Since the 2022 count, additional emergency shelter capacity was added, resulting in an increase in sheltered totals in 2024. In 2022, there were two Safe Parking program locations in operation and were counted separately from the RV count. At the time of the 2024 count, there was one Safe Parking program operating as a scattered site program and participants were instead included in the RV count, which may have contributed to the increase of people counted in RVs.

**TABLE 2: ONE DAY HOMELESS COUNT TOTALS BY LOCATION TYPE AND YEAR**

Location Type	2013	2015	2017	2019	2022	2024
<b>Unsheltered Count</b>						
Street	353	331	127	157	175	222
Vehicles and Structures						
<i>Car/Van</i>	231	157	197	184	329	356
<i>RV</i>	392	151	218	494	287	460
<i>Safe Parking</i>	-	-	-	-	102	--
<i>Tent/Encampment</i>	323	136	95	66	177	77
<i>Other</i>	-	-	-	-	22	30
<b>Subtotal Unsheltered</b>	<b>1,299</b>	<b>775</b>	<b>637</b>	<b>901</b>	<b>1,092</b>	<b>1,145</b>
<b>Sheltered Count</b>						
Emergency Shelter	272	254	211	266	582	837
Transitional Housing	431	454	405	345	134	148
<b>Subtotal Sheltered</b>	<b>703</b>	<b>708</b>	<b>616</b>	<b>611</b>	<b>716</b>	<b>985</b>
<b>TOTAL</b>	<b>2,002</b>	<b>1,483</b>	<b>1,253</b>	<b>1,512</b>	<b>1,808</b>	<b>2,130</b>

## ANALYSIS OF CHANGES

### Total Count of People Experiencing Homelessness

Overall, the number of people experiencing unsheltered and sheltered homelessness increased by 322 people (18%) from 2022 to 2024. This total is higher than all previous counts since 2013.

### Unsheltered Count

The number of people experiencing unsheltered homelessness in 2024 increased by 53 (5%) compared to 2022. In 2024 there was an 8% increase in people sleeping in cars and vans and a 60% increase in people sleeping in RVs compared to 2022. The increase in people sleeping in RVs is in part due to the scattered site Safe Parking program being counted under the RV vehicle structure in 2024. The 2022 Count counted RVs on the street and in safe parking programs separately. When accounting for this recategorization, there was a 14% increase in people sleeping in vehicles (including safe parking) between 2022 and 2024. In 2024 there was a 27% increase in people sleeping on the street but a 56% decrease in people sleeping in tents and encampments compared to 2022.

### Sheltered Count

The number of people experiencing homelessness in sheltered locations (emergency shelters and transitional housing) in 2024 increased by 269 (38%) compared to 2022. The number of people staying in emergency shelter increased from 582 to 837 (44%). The number of people staying in transitional housing also increased from 134 to 148 (10%).

## Families with Children

The number of families with children experiencing homelessness increased from 109 in 2022 to 167 in 2024. Of the 167 families, 130 (78%) were staying in emergency shelter or transitional housing and 37 (22%) were staying in RVs or a car/van. Table 3 below summarizes the locations of families experiencing homelessness in 2022 and 2024.

Location Type	2022	2024
Street	1	0
Vehicles/Structures	5	37
Safe Parking	15	-
Emergency Shelter/Transitional Housing	88	130
<b>TOTAL</b>	<b>109</b>	<b>167</b>

Very few families experience unsheltered homelessness in San Mateo County. This reflects the County’s commitment to preventing family homelessness and investing in targeted programs for families with children, such as emergency shelter and homelessness prevention programs operated by the Core Service Agency Network. The data collected in the 2024 One Day Homeless Count is consistent with the experiences of local services providers, who have observed that families with children experiencing homelessness rarely sleep on the street. However, many families with children may live in places that do not meet HUD definitions of homelessness (e.g., living with family or friends temporarily) and, as a result, are not reflected in the 2024 One Day Homeless Count.

## Households with Children and No Adults

Only two unaccompanied children under the age of 18 were counted in 2024. The children were staying in a transitional housing program. No other child-only households were observed.

# GEOGRAPHIC INFORMATION

## UNSHELTERED COUNT TOTALS BY LOCATION

Table 4 summarizes the number of people experiencing unsheltered homelessness by geographic location in 2024, and Table 5 displays summaries for each count from 2013 to 2024. A large proportion of people experiencing homelessness were living in nine geographic locations in 2024: Redwood City, Pacifica, San Mateo, East Palo Alto, South San Francisco, San Bruno, Menlo Park, Daly City, and the unincorporated Coastside region.

Areas included in each of the unincorporated jurisdictions include: (1) Coastside – El Granada, La Honda, Montara, Princeton, Pescadero, Moss Beach; (2) Central – Highlands/Baywood; (3) North – Broadmoor; and (4) South – North Fair Oaks, Emerald Lake, West Menlo Park.

Geographic Location	2024 Count
Atherton	2
Belmont	22
Brisbane	11
Burlingame	40
Colma	11
Daly City	72
East Palo Alto	81
Foster City	4
Half Moon Bay	20
Hillsborough	0
Menlo Park	74
Millbrae	22
Pacifica	180
Portola Valley	0
Redwood City	189
San Bruno	75
San Carlos	29
San Francisco Int. Airport	23
San Mateo	95
South San Francisco	79
Unincorporated	114
<i>Coastside</i>	105
<i>North</i>	0
<i>Central</i>	0
<i>South</i>	9
Woodside	2
<b>TOTAL</b>	<b>1,145</b>

**TABLE 5: UNSHELTERED COUNT BY JURISDICTION BY YEAR**

Geographic Location	2013	2015	2017	2019	2022	2024
Atherton	0	1	0	1	3	2
Belmont	43	11	3	7	13	22
Brisbane	34	21	19	4	6	11
Burlingame	13	7	21	25	10	40
Colma	7	3	1	8	1	11
Daly City	27	32	17	66	49	72
East Palo Alto	119	95	98	107	169	81
Foster City	7	0	6	4	4	4
Half Moon Bay	114	84	43	54	68	20
Hillsborough	0	0	0	0	0	0
Menlo Park	16	27	47	27	56	74
Millbrae	21	8	7	9	9	22
Pacifica	150	63	112	116	161	180
Portola Valley	2	0	1	0	0	0
Redwood City	306	223	94	221	245	189
San Bruno	98	8	26	12	63	75
San Carlos	10	20	28	30	14	29
San Francisco International Airport	5	1	3	21	14	23
San Mateo	103	82	48	74	60	95
South San Francisco	172	55	33	42	42	79
Unincorporated	46	32	30	73	105	114
<i>Coastside</i>	-	22	22	60	62	105
<i>Central</i>	-	0	0	0	0	0
<i>North</i>	-	0	3	6	7	0
<i>South</i>	-	10	5	7	36	9
Woodside	6	2	0	0	0	2
<b>TOTAL</b>	<b>1,299</b>	<b>775</b>	<b>637</b>	<b>901</b>	<b>1,092</b>	<b>1,145</b>

Table 6 compares the 2024 unsheltered count with the San Mateo County general population by geographic location.

<b>TABLE 6: UNSHELTERED HOMELESS POPULATION BY CITY COMPARED TO SAN MATEO COUNTY GENERAL POPULATION<sup>3</sup></b>				
<b>Geographic Place</b>	<b>2024 One Day Homeless Count</b>		<b>2020 Census</b>	
	<b>Unsheltered Population</b>	<b>% of Total Unsheltered Population</b>	<b>General Population</b>	<b>% of Total General Population</b>
Atherton	2	<1%	7,188	<1%
Belmont	22	2%	28,335	4%
Brisbane	11	<1%	4,851	<1%
Burlingame	40	3%	31,386	4%
Colma	11	1%	1,507	<1%
Daly City	72	6%	104,901	14%
East Palo Alto	81	7%	30,034	4%
Foster City	4	<1%	33,805	4%
Half Moon Bay	20	2%	11,795	2%
Hillsborough	0	0%	11,387	1%
Menlo Park	74	6%	33,780	4%
Millbrae	22	2%	23,216	3%
Pacifica	180	16%	38,640	5%
Portola Valley	0	0%	4,456	<1%
Redwood City	189	17%	84,292	11%
San Bruno	75	7%	43,908	6%
San Carlos	29	3%	30,722	4%
San Francisco International Airport	23	2%	-	-
San Mateo	95	8%	105,661	14%
South San Francisco	79	7%	66,105	9%
Unincorporated	114	10%	63,164	8%
Woodside	2	<1%	5,309	<1%
<b>TOTAL</b>	<b>1,145</b>	<b>100%</b>	<b>764,442</b>	<b>100%</b>

<sup>3</sup> General population data from 2020 American Community Survey 5-Year Estimates.

---

# DEMOGRAPHICS AND ADDITIONAL DESCRIPTIVE INFORMATION

The 2024 One Day Homeless Count and Survey collected survey responses from January 25 to February 1, 2024 (see Appendix 3 for the questionnaire that was used to conduct the survey). Survey teams collected a total of 222 responses from people experiencing unsheltered homelessness. The demographic information collected was extrapolated to the total number of people experiencing unsheltered homelessness on the night of the Count. The large number of survey responses increased the reliability of the extrapolations and interpretation of the results compared to Counts prior to 2022. Appendix 1 describes the statistical approach used for demographic extrapolation.<sup>4</sup> In addition, the sheltered count collected data on the characteristics of people experiencing homelessness who were staying in emergency shelters and transitional housing on the night of the Count. The unsheltered and sheltered demographics were combined to produce the results presented below, which summarize key findings from the data submitted to HUD. Additional variables of interest to the community are presented as well.

The 2024 One Day Homeless Count and Survey counted 1,447 households, including 1,278 adult only households with 1,565 household members, and 167 family households that included 240 adults and 323 children. There were two child-only households on the night of the Count, but their demographics are not reported here to preserve confidentiality.

Table 7 summarizes the demographics of people experiencing homelessness on the night of the Count by sleeping location.

---

<sup>4</sup> HUD requires that there be no missing data in the tables submitted via the HUD Data Exchange (HDX), the centralized reporting repository used by HUD. Appendix 2 contains the required tables submitted to HUD via HDX.

**TABLE 7: DEMOGRAPHICS BY SLEEPING LOCATION<sup>5</sup>**

	Emergency Shelter N = 837	Transitional Housing N = 148	Unsheltered N = 1,145	Total N = 2,130
<b>Age</b>				
Under 18	21%	60%	5%	15%
18-24 years old	5%	6%	5%	5%
25-34 years old	13%	14%	19%	16%
35-44 years old	18%	11%	23%	20%
45-54 years old	15%	5%	21%	17%
55-64 years old	17%	3%	20%	18%
65+ years old	11%	0%	7%	8%
<b>Gender</b>				
Woman (Girl if child)	43%	53%	20%	31%
Man (Boy if child)	57%	47%	78%	67%
Culturally Specific Identity	0%	0%	0%	0%
Transgender	0%	0%	2%	1%
Non-Binary	0%	0%	0%	0%
Questioning	0%	0%	0%	0%
Different identity	0%	0%	0%	0%
More than one gender	0%	0%	1%	0%
<b>Race/Ethnicity</b>				
American Indian, Alaskan Native, or Indigenous	1%	1%	1%	1%
Asian or Asian Am.	4%	2%	1%	2%
Black, African American, or African	12%	15%	11%	12%
Hispanic/Latina/e/o	41%	52%	61%	53%
Middle Eastern or North African	0%	0%	0%	0%
Native Hawaiian or Pacific Islander	6%	15%	2%	5%
White	31%	8%	19%	23%
Multiple Race	4%	7%	4%	4%
<b>Other Characteristic</b>				
Chronically Homeless	46%	-	38%	39%

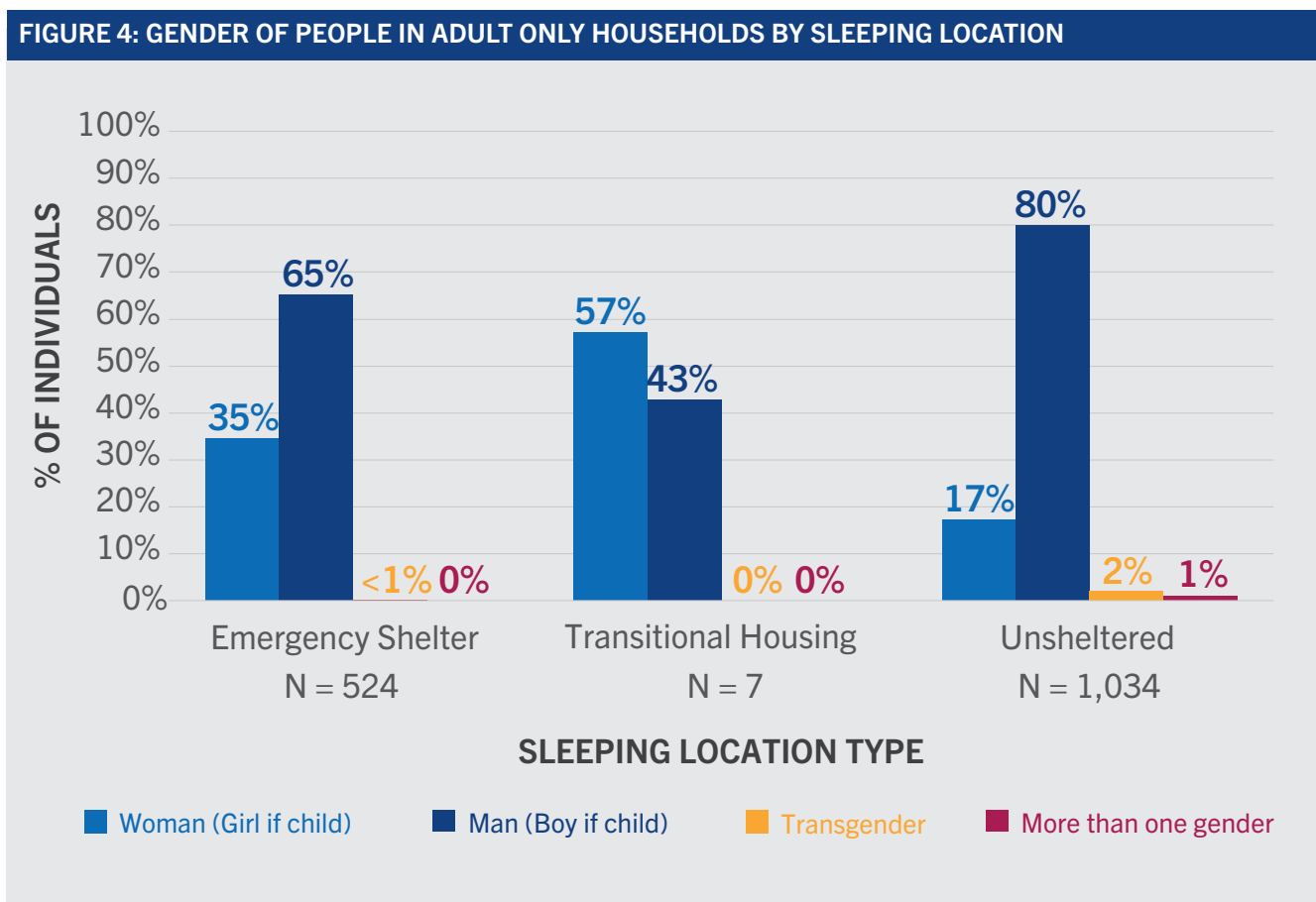
<sup>5</sup> Table percentages may not add up to one-hundred percent due to rounding.

## DEMOGRAPHIC CHARACTERISTICS OF ADULT ONLY HOUSEHOLDS

The majority of people in adult only households were unsheltered (66%), male (75%), Hispanic/Latina/e/o (49%) or White (28%), and not experiencing chronic homelessness (60%).

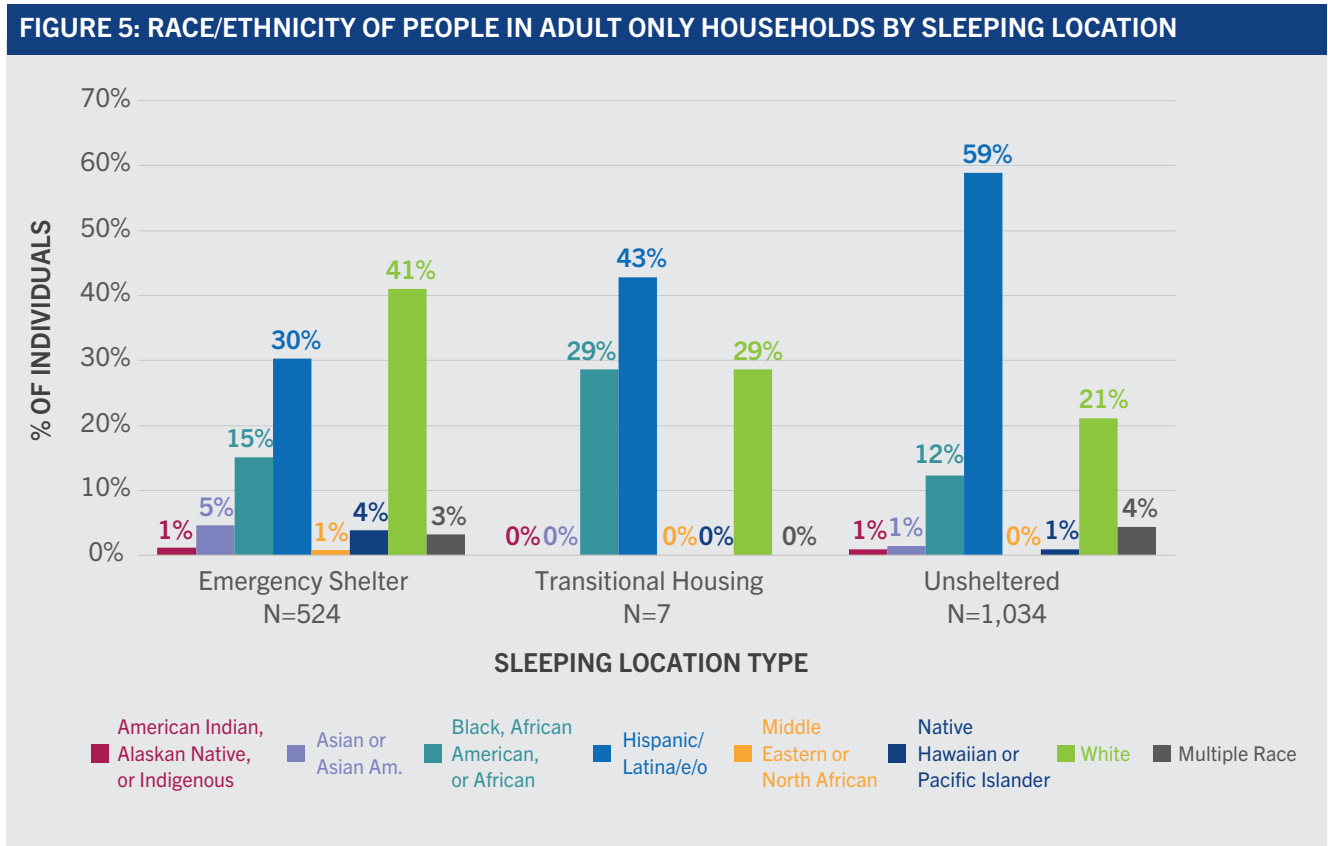
Among adult only households, gender and race/ethnicity varied by sleeping location on the night of the Count. Figures 5 and 6 below display the gender and race/ethnicity<sup>6</sup> of people in adult only households sleeping in emergency shelter, transitional housing, or unsheltered locations.

Proportionately fewer females were unsheltered than in emergency shelter or transitional housing. On the night of the Count, one person identifying as transgender was in emergency shelter. All other people who identified as transgender or more than one gender were unsheltered. No persons in adult households identified as non-binary, questioning, different identity, or culturally specific identity.



<sup>6</sup> In 2024, HUD updated their race/ethnicity reporting to include 15 different categories and combinations. The race/ethnicity categories reported here align with prior One Day Count reports.

Proportionately more Hispanic/Latin(a)(o)(e) people were unsheltered than in emergency shelter or transitional housing. Additionally, a higher proportion of White adults were in emergency shelter than in transitional housing and unsheltered living situations.



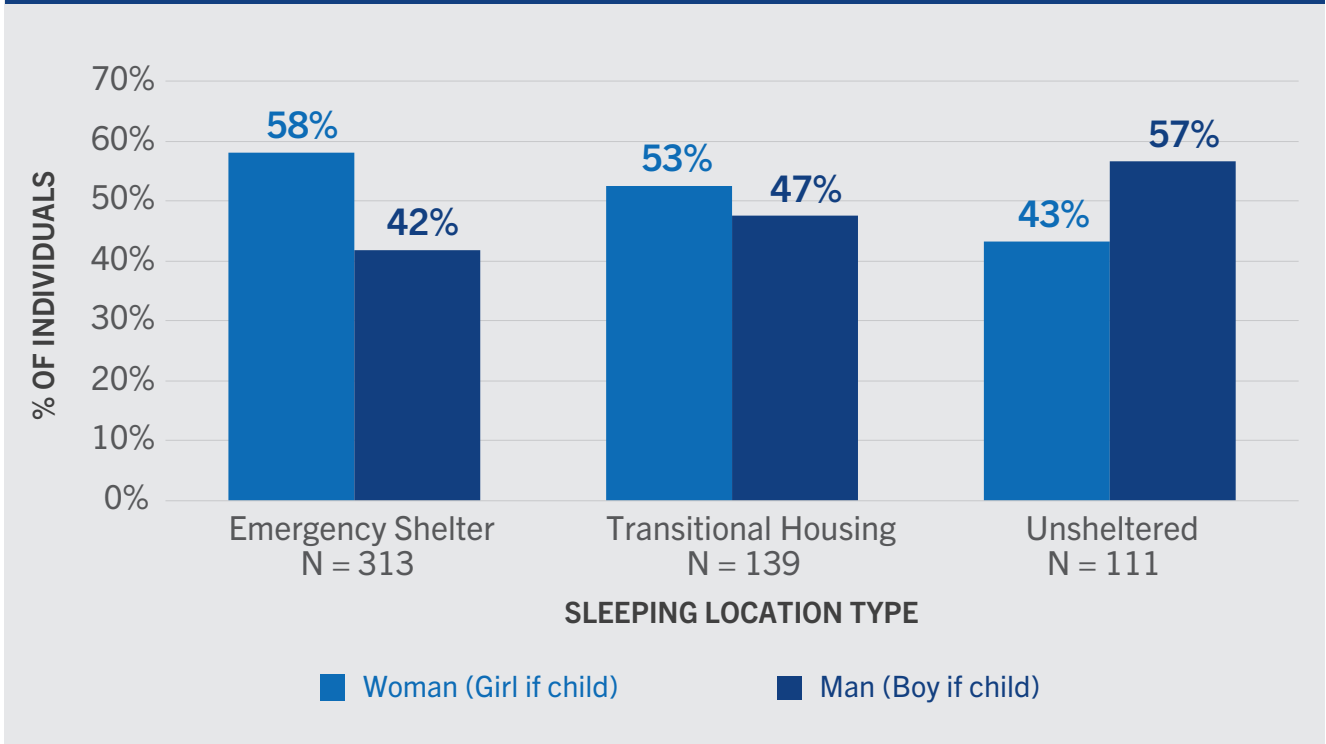
## DEMOGRAPHIC CHARACTERISTICS OF FAMILY HOUSEHOLDS

People in family households were predominantly female (54%), Hispanic/Latina/e/o (63%), and not experiencing chronic homelessness (86%). Families had an average of two children per household.

Among family households, gender and race/ethnicity varied substantially by sleeping location on the night of the Count. Figures 6 and 7 display gender and race/ethnicity of people in family households sleeping in emergency shelter, transitional housing, or unsheltered locations.

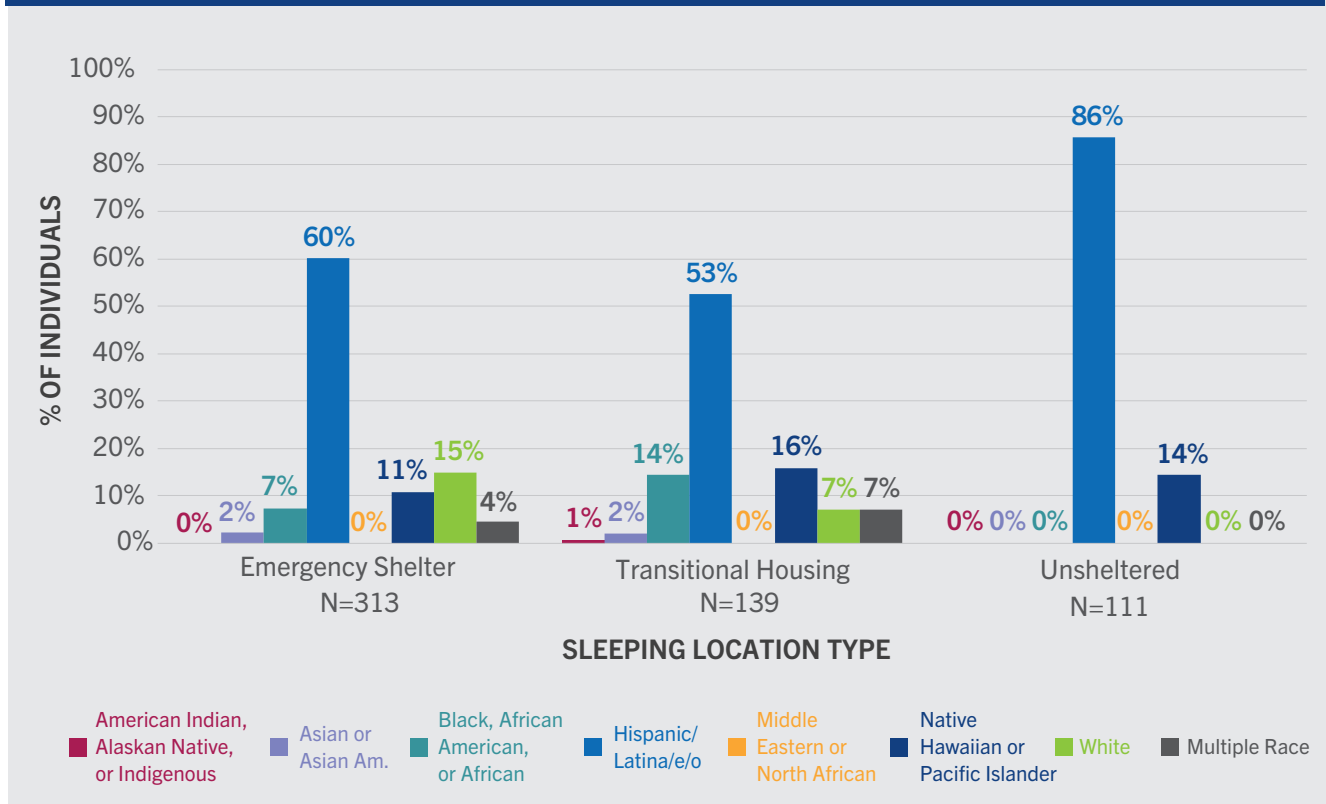
Proportionately more females were in emergency shelter or transitional housing than unsheltered. No people in families surveyed identified as culturally specific identity, transgender, non-binary, questioning, different identity, or with more than one gender.

**FIGURE 6: GENDER OF PEOPLE IN FAMILIES BY SLEEPING LOCATION**



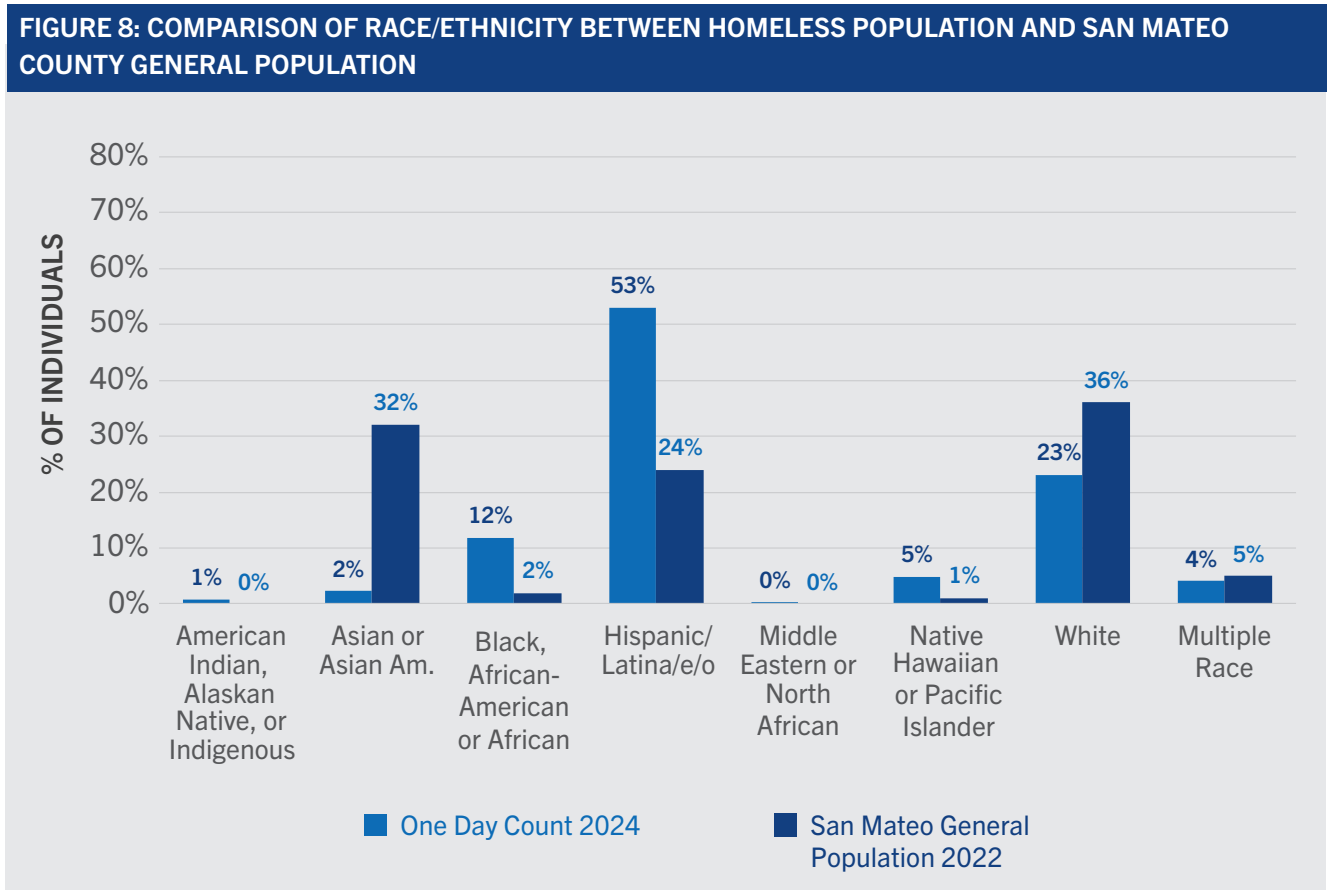
Proportionately more Hispanic/Latin(a)(o)(e) people in families were unsheltered than in emergency shelter or transitional housing. All families surveyed identified as Hispanic/Latin(a)(o)(e) and Native Hawaiian or Pacific Islander.

**FIGURE 7: RACE/ETHNICITY OF PEOPLE IN FAMILIES BY SLEEPING LOCATION**



## RACE/ETHNICITY COMPARISON WITH SAN MATEO COUNTY GENERAL POPULATION

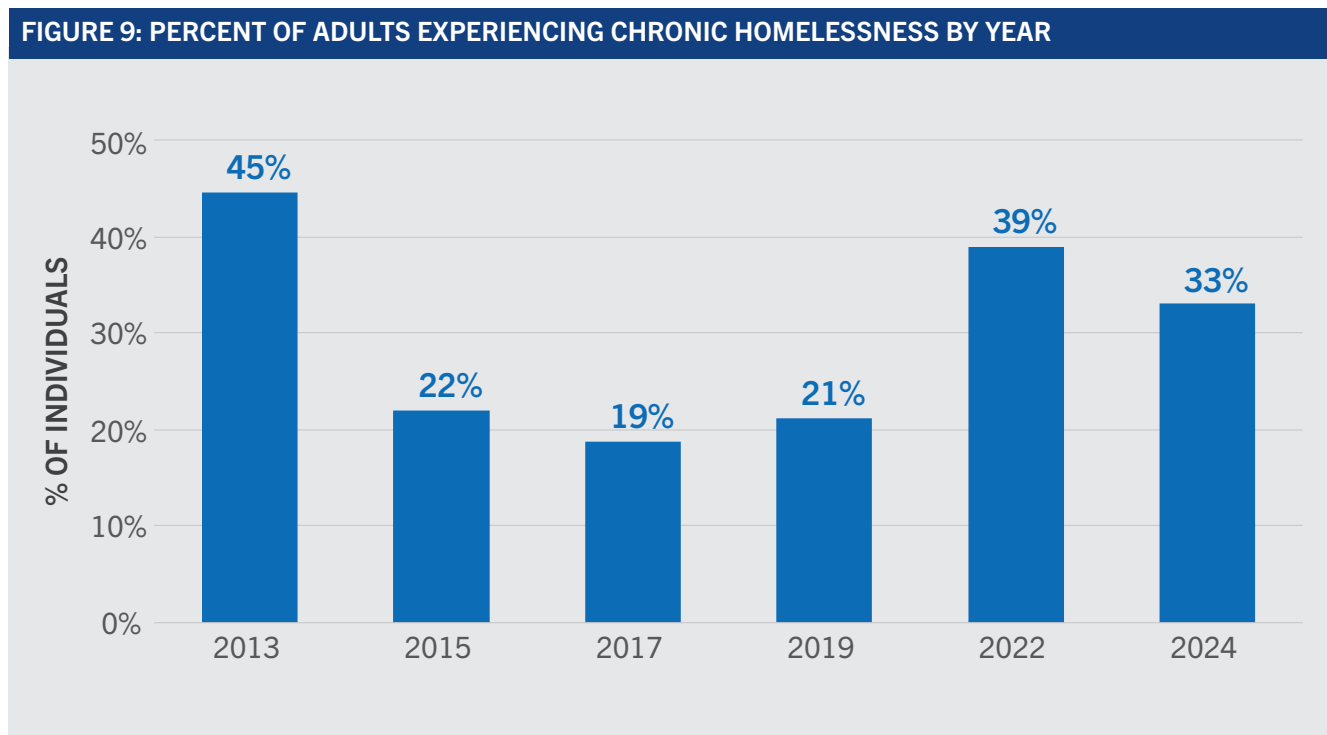
The proportions of people experiencing homelessness by race/ethnicity are substantially different compared to the general population of San Mateo County, as illustrated in Figure 8. Fewer people experiencing homelessness identify as Asian or White than in the general population. By contrast, more people experiencing homelessness identify as Black, African American, or African, Native Hawaiian or Pacific Islander, and Hispanic/Latina/e/o than in the general population.



## ADDITIONAL CHARACTERISTICS OF ADULTS EXPERIENCING HOMELESSNESS

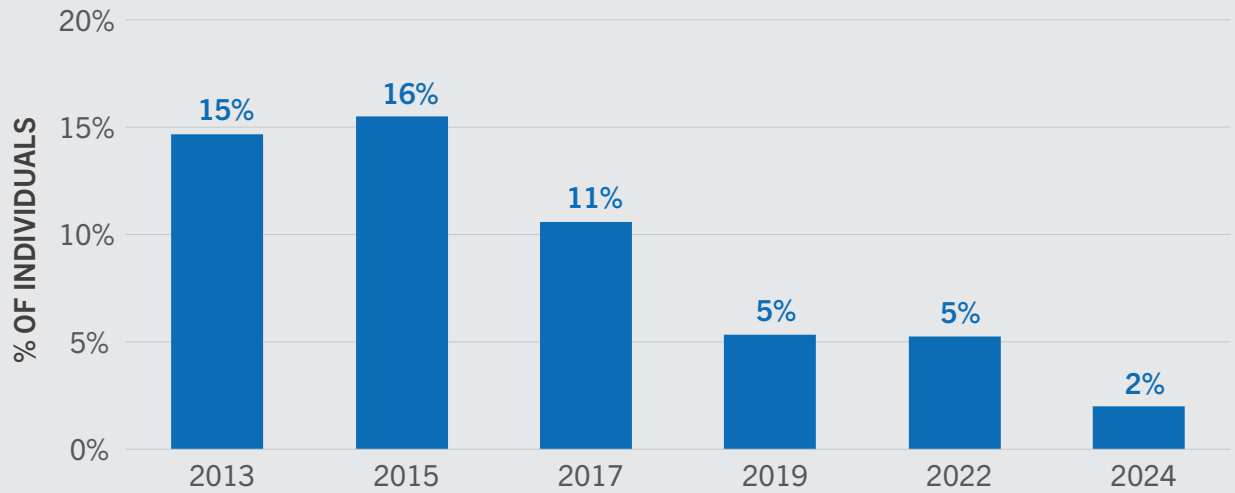
The information presented in the figures below includes all adults experiencing unsheltered and sheltered homelessness regardless of whether they are members of adult only or family households.

Figure 9 illustrates the proportion of adults experiencing chronic homelessness. Adults experiencing chronic homelessness in 2024 decreased by six percentage points from the 2022 Count.

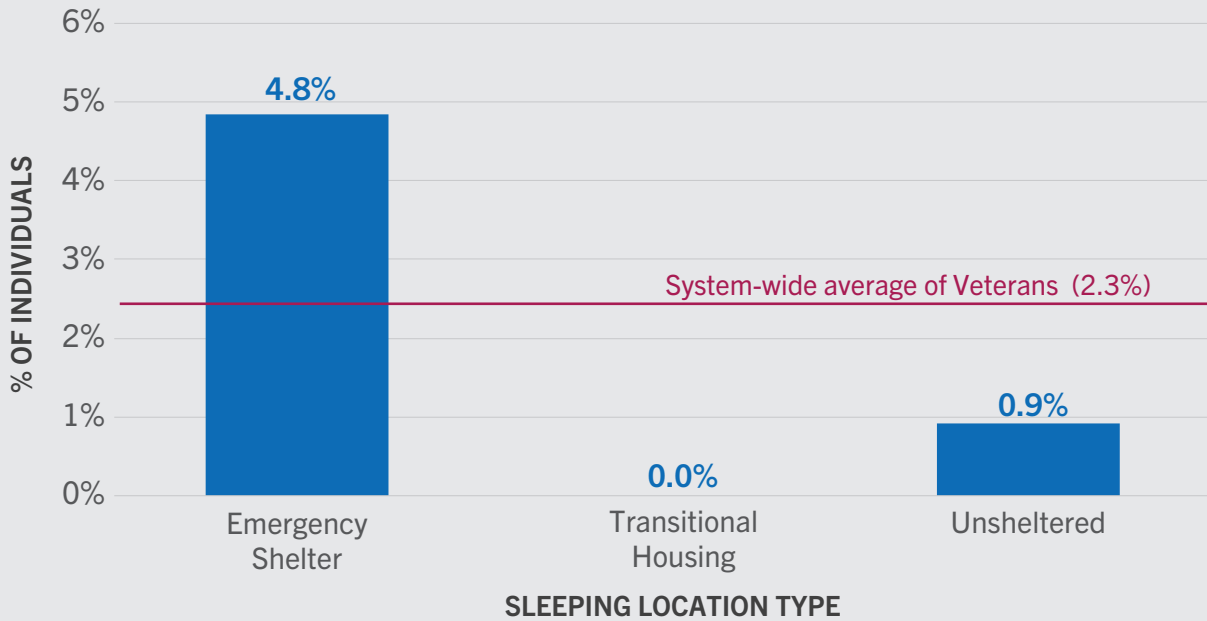


Figures 10 and 11 present veterans as a percent of total adults experiencing homelessness. Figure 11 shows that the proportion of veterans has decreased significantly since 2011. Only 2% of all adults experiencing homelessness were veterans in the 2024 count, a decrease from the previous count. Figure 12 displays the percent of veterans by sleeping location on the night of the Count. The percent of veterans was 5% for adults in emergency shelter and 1% in adults experiencing unsheltered homelessness. No veterans were counted in transitional housing in the 2024 Count.

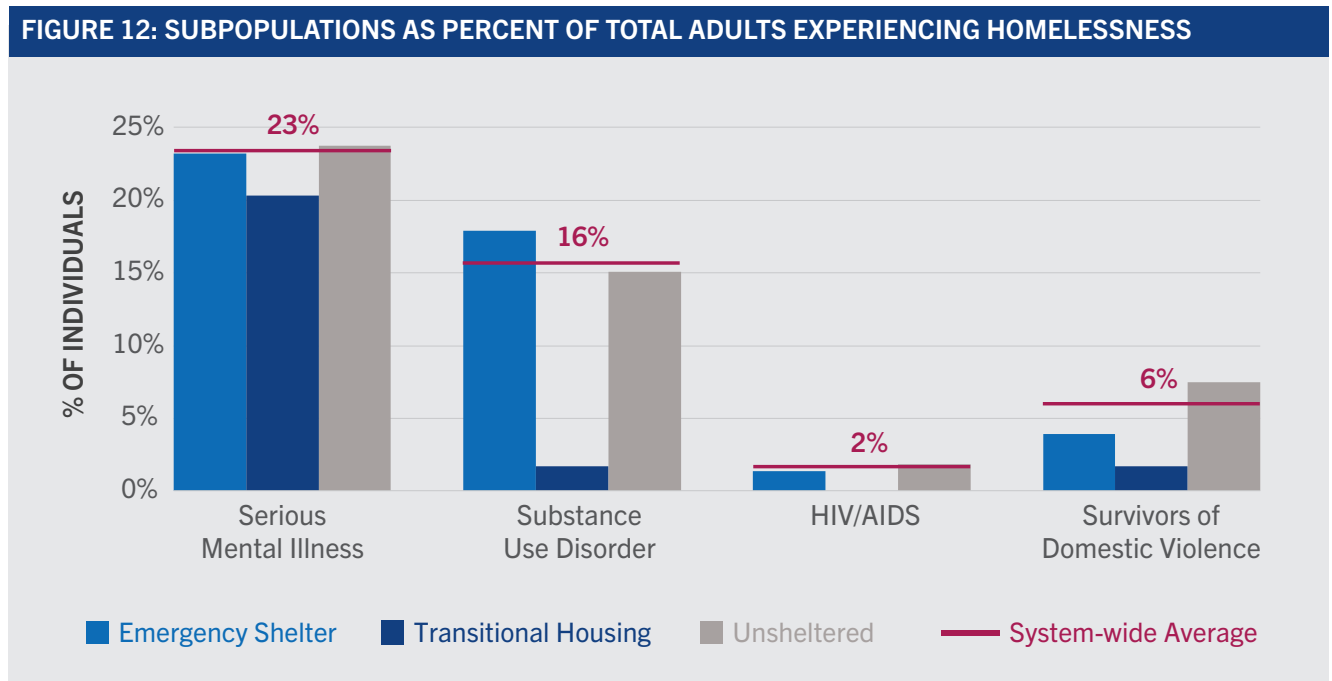
**FIGURE 10: VETERANS AS PERCENT OF TOTAL ADULTS EXPERIENCING HOMELESSNESS BY YEAR**



**FIGURE 11: VETERANS AS PERCENT OF ADULTS BY SLEEPING LOCATION**



The One Day Homeless Count and Survey collected data on four additional subpopulations through surveys of people experiencing unsheltered homelessness and through standard intake questions for people staying in emergency shelter and transitional housing. The four additional subpopulations include people who identified as having serious mental illness, substance use disorders, AIDS or HIV-related illnesses, and whether they were experiencing homelessness because they were fleeing domestic violence, dating violence, sexual assault, or stalking. Figure 12 presents these subpopulations as percentages of all adults experiencing homelessness.



## ADDITIONAL CHARACTERISTICS OF PEOPLE EXPERIENCING UNSHELTERED HOMELESSNESS

The survey administered to people experiencing unsheltered homelessness provided the opportunity to ask additional questions about their experiences of homelessness in San Mateo County. Of those surveyed, 77% reported living in San Mateo County prior to becoming homeless, and 59% were experiencing homelessness for the first time. The lengths of current episodes of homelessness varied substantially: 30% had been homeless for less than one year, 32% had been homeless for one to three years, and 36% had been homeless for longer than three years.

The survey also provided data about the services used by people experiencing unsheltered homelessness, which is presented in Table 8. Among those surveyed, 86% of people reported using at least one type of service. The most common services reported were accessing food pantries or free meals (59%), Medi-Cal or other health coverage (30%), and receiving CalFresh (21%). Additionally, 7% of those surveyed reported being on probation or parole, which is a decrease from the data collected in the previous two counts (23% in 2019, 17% in 2022).

**TABLE 8: SERVICE USE BY PEOPLE EXPERIENCING UNSHELTERED HOMELESSNESS**

Service	Percent
Food pantry/free meals	59%
Medi-Cal or other health coverage	30%
CalFresh	21%
General health services	9%
Mental health services	8%
Transportation assistance	4%
Job search assistance centers	5%
Legal assistance	3%
Job/vocational training	1%
Adult education	0.1%
Other	3%
Not using any services	14%



---

## CONCLUSION

The overall finding from the 2024 One Day Homeless Count is that the number of people experiencing homelessness on the day of the Count was 2,130. The number of people staying in emergency shelter or transitional housing increased by 269 people (38)% from 2022 to 2024, which is a result of expanded shelter capacity, while the number of people experiencing unsheltered homelessness on the night of the Count increased by 53 people (5%) from 2022 to 2024.

The County and its partners have expanded homeless services in recent years, including expansions in shelters, as well as expansions in homeless outreach services, permanent housing resources, and enhanced connections between health services and homeless services. Since 2022, the County has opened two additional non-congregate shelters—the Navigation Center and El Camino House—which has created additional capacity to provide safe shelter and intensive support services to help residents move into permanent housing. The County continues to implement strategies to increase affordable housing through new construction with set-aside units for the formerly homeless population, the Affordable Housing Fund, Homekey projects, County Housing Voucher Program, and rental vouchers. The County also continues to implement strategies such as investing in homeless prevention services, expanding homeless outreach and case management services to serve unsheltered individuals, and tailoring services to meet the needs of people experiencing homelessness who have complex health conditions.

# APPENDICES



---

# APPENDIX 1: METHODOLOGY

## OVERVIEW

The County of San Mateo's One Day Homeless Count and Survey was conducted in the early morning hours of January 25, 2024, with the goal of identifying how many people were unsheltered the night of January 24, 2024, and in-depth surveys were collected over the course of the following week from January 25 to February 1, 2024. The County of San Mateo's Human Services Agency's (HSA) Center on Homelessness staff were responsible for project planning and implementation. The Center on Homelessness contracted with Focus Strategies for assistance with developing the methodology, survey contents, analysis of the data, and preparation of the Executive Summary and Full Report.

For the unsheltered count, observational counts and surveys were conducted separately. On the morning of January 25, volunteers were deployed to all census tracts within the County to count people experiencing unsheltered homelessness, as well as vehicles and structures with evidence of people staying inside. Volunteers were instructed to count the people, vehicles, and structures they observed without approaching or disturbing anyone. Observational counts were recorded using a mobile application.

During the seven days following the observational count, outreach teams surveyed people experiencing unsheltered homelessness, who were observed on the street and at locations where they were receiving services. The survey was designed to elicit demographic information (e.g., age, gender, race and ethnicity, veteran status, disabilities), information about length and number of times experiencing homelessness, sleeping location on the night of January 24, and about the use of benefits and services. Volunteers collected the survey data using a mobile application.

The sheltered count collected data on the number and characteristics of people experiencing homelessness who had spent the night of January 24 in emergency shelters or transitional housing. Data was also collected from institutional settings (jails, hospitals, substance use treatment programs, and mental health facilities).

## Definition of Homelessness

The One Day Homeless Count and Survey used the definition of homelessness established by the United States Department of Housing and Urban Development (HUD) in the federal McKinney-Vento Homeless Assistance Act as the basis for determining who to include in the count:

- An individual who lacks a fixed, regular, and adequate nighttime residence, and
- An individual who has a primary nighttime residence that is:
  - A supervised publicly or privately-operated shelter designed to provide temporary living accommodations (including welfare hotels, congregate shelters, and transitional housing for the mentally ill); or
  - An institution that provides a temporary residence for individuals intended to be institutionalized; or
  - A public or private place not designated for, or ordinarily used as, a regular sleeping accommodation for human beings.

This definition does not include people who are “at-risk” of homelessness (i.e., living in unstable housing situations) or those who are “couch surfing” (i.e., staying temporarily with family or friends).

## UNSHELTERED COUNT AND SURVEY METHODOLOGY

The Unsheltered Count was a “complete coverage” count that covered all census tracts in the county and enumerated every person experiencing homelessness that was visible on the streets, in tents, encampments, and other structures, and in vehicles. The Count was conducted by teams of volunteers who were deployed across San Mateo County in the early morning hours of January 25. The unsheltered survey was conducted throughout all areas of the county between January 25 and February 1. Outreach workers conducted surveys during their shifts and/or were assigned to specific areas to cover all regions of the county. Teams also conducted surveys at community events where individuals experiencing homelessness go to receive services. The days and times of survey collection were designed to maximize the number of responses collected.

## Volunteers: Recruitment and Training

Planning for volunteer recruitment began in the fall of 2023, with specific attention on how to ensure volunteers represented staff from service provider organizations, City and County departments, and community members. Team composition was intended to maximize local knowledge, and volunteers were recruited from all over the county. Volunteers had the opportunity to select an area they were familiar with and were assigned a tract to count from within the area.

Over 300 volunteers were recruited and trained to participate in the 2024 One Day Homeless Count. Beginning in early January, the Center on Homelessness held virtual training to prepare volunteers for the Count. The training for the observational count included information about the purpose of the Count, who to count (i.e., the definition of homelessness), area navigation, safety precautions, confidentiality, and the use of mobile technology for recording observations. Outreach workers received additional training for conducting the surveys which included interviewing protocol, prompting for detailed responses, and the use of mobile technology for administering surveys.

## **Volunteers: Deployment**

On the morning of the count, volunteers gathered at 10 deployment sites across the County at 5:00 AM to receive census tract assignments, maps, supplies, and a brief review of how to use the mobile application. During the observational count, volunteers covered the streets, roads, highways, parks, and open spaces of their assigned tracts (either by foot or car). Volunteers then returned to their deployment sites prior to 10:00 AM. Upon their return, they turned in maps, supplies, and paper tally forms (if used).

During the seven days following the count, outreach teams were deployed in small groups to different areas of the county to survey individuals experiencing unsheltered homelessness. HSA staff monitored survey collection daily and directed surveyors to specific areas of the county to improve geographic coverage. Surveys were collected over the course of one week to maximize the number of survey responses. People experiencing unsheltered homelessness were surveyed on the street and at locations where they were receiving services. Incentives (gift cards) were offered to survey respondents in appreciation of their time and participation.

## **Data Collection: Mobile Application**

As in the previous count, the Center on Homelessness employed mobile technology to collect as much of the data from the unsheltered count as possible. SimTech Solutions' Counting Us mobile application was used for data collection on volunteers' personal devices. The mobile application allowed Center on Homelessness staff to monitor data collection in real time, and geospatial data provided detailed information about the locations of each observation and survey. The application is secure and does not store observation or survey data on volunteers' devices.

The Center on Homelessness partnered with SimTech Solutions to create customized observational count and survey data collection tools for the unsheltered count. For the observational count, the application allowed volunteers to record observations of people sleeping on the street or observations of vehicles and structures. The survey included questions required by HUD as well as additional items of local interest. The application included branching logic to ensure only applicable questions were asked of survey respondents (e.g., youth-specific questions were only asked to people aged 24 or younger). The mobile application included both English and Spanish versions of the survey. Center on Homelessness staff also developed paper forms, which could be used for data collection in the event of problems with the mobile technology.

## **Survey Tool**

The survey questions used in the 2024 One Day Homeless Count were based on the questions from the 2022 count, which included HUD-recommended questions and additional questions based on local data needs. Some updates were made to the questions, including adjusting response options to match updated HUD data standards and removing COVID-19-related questions. See Appendix 3 for the survey questionnaire.

In most cases, interviewers read the survey questions out loud to the participants unless the participants opted to complete a paper version of the survey. During the interview process, the interviewers took care to ensure that respondents felt comfortable, regardless of their location. Respondents were encouraged to be candid in their responses and were informed that these responses would be kept confidential, would not be traceable to any one individual, and would be framed as general findings. Volunteers were trained to make no assumptions or prompts, and ask all questions, but also allow respondents to skip any question or end the survey at any point.

The survey requested respondents' initials, month of birth and age, to avoid respondent duplication and maintain respondents' anonymity. Deduplication was also supported by asking potential respondents at the beginning of the survey whether they had already participated.

## Unsheltered Count Data Analysis

Volunteers did not enter encampments or disturb anyone inside vehicles to count the total number of people inside. Therefore, the approach to data analysis included the development of multipliers to estimate the numbers and household types of people in vehicles and structures. These multipliers were derived from survey responses of people who indicated that they had slept in a car, van, RV, tent, makeshift shelter,<sup>1</sup> or other sleeping locations (e.g., abandoned buildings, boats, and other uncategorized vehicles or structures) on the night of the count. People sleeping on the street were able to be counted directly, so no multiplier was necessary for these sleeping locations. The following calculations were used to estimate the total number of people experiencing unsheltered homelessness on the night of the count:

Sleeping Location	Number Observations	Multiplier	Total
Street <sup>2</sup>	187 adults 0 adult in family 0 child in family	N/A	222 adults
Car/Van	288 cars/vans	Adults: 1.12 Families: 0.06 adults 0.06 children	322 adults 17 adults in families 17 children in families
RV	261 RVs	Adults: 1.47 Families: 0.14 adults 0.16 children	383 adults 35 adults in families 42 children in families
Tent/Encampment	53 tents	Adults: 1.45	77 adults
Other	14 other locations	Adults: 2.23	30 adults

Demographic characteristics from the surveys were used to estimate demographic characteristics for the unsheltered population. A total of 222 people were surveyed out of the 1,145 people experiencing unsheltered homelessness (19%). The proportions of demographic characteristics from the surveys were extrapolated to the full population. To illustrate the extrapolation process, we present an example using adult-only households below:

<sup>1</sup> Estimates for people in tents and in makeshift shelters were calculated separately. However, to maintain consistency with prior years, they are reported together in a single category: "tents and encampments."

<sup>2</sup> A street observation could include multiple people sleeping on the street together; therefore, the total number of people is greater than the total number of observations.

Gender	Adults Observed in Adult Only Households	Percent Surveyed	Estimated Number of Adults
Woman (Girl if child)	1,034	17.2%	178
Man (Boy if child)		79.9%	826
Culturally Specific Identity		0%	0
Transgender		1.9%	20
Non-Binary		0%	0
Questioning		0%	0
Different Identity		0%	0
More than one gender		1.0%	10

## SHELTERED COUNT METHODOLOGY

The sheltered component of the count was conducted on the night of January 24. The Center on Homelessness compiled a comprehensive list of all facilities and programs providing emergency shelter and transitional housing to people experiencing homelessness. Facilities were divided into two categories:

- Emergency shelters
- Transitional housing

The majority of programs on the list currently enter data on their clients into the County's Homeless Management Information System (HMIS). HUD requires all communities that receive federal homeless assistance funding to create and maintain a HMIS that meets specific standards. The HMIS database was used to extract data on the numbers of people in most of the emergency shelters and transitional housing programs operating in the community. For the small number of shelters and transitional housing programs that do not participate in the HMIS, the Center on Homelessness staff gathered data from providers using a survey form.

# APPENDIX 2: DATA TABLES SUBMITTED TO HUD

## ALL HOUSEHOLDS

### Households with at Least One Adult and One Child

	Emergency Shelter	Transitional Housing	Unsheltered	Total
<b>Total Number of Households</b>	94	36	37	167
<b>Total Number of Persons</b>	313	139	111	563
<b>Age</b>				
Under 18	177	87	59	323
18-24 years old	28	3	0	31
25-34 years old	46	21	21	88
35-44 years old	43	17	26	86
45-54 years old	15	7	0	22
55-64 years old	3	4	0	7
65+ years old	1	0	5	6
<b>Gender</b>				
Woman (Girl if child)	182	73	48	303
Man (Boy if child)	131	66	63	260
Culturally Specific Identity	0	0	0	0
Transgender	0	0	0	0
Non-Binary	0	0	0	0
Questioning	0	0	0	0
Different identity	0	0	0	0
More than one gender	0	0	0	0
<b>Race and Ethnicity</b>				
American Indian, Alaskan Native, or Indigenous	0	1	0	1
American Indian, Alaskan Native, or Indigenous and Hispanic	11	4	0	15
Asian or Asian American	7	3	0	10
Asian or Asian American and Hispanic	5	0	0	5
Black, African American, or African	23	20	0	43
Black, African American, or African and Hispanic	0	4	0	4
Hispanic	56	11	95	162
Middle Eastern or North African	0	0	0	0

	Emergency Shelter	Transitional Housing	Unsheltered	Total
Middle Eastern or North African and Hispanic	0	0	0	0
Native Hawaiian or Pacific Islander	34	22	16	72
Native Hawaiian or Pacific Islander and Hispanic	3	1	0	4
White	47	10	0	57
White and Hispanic	121	58	0	179
Multi-Racial and Hispanic	2	1	0	3
Multi-Racial (Not Hispanic)	4	4	0	8
<b>Chronically Homeless</b>				
Total Number of Households	18	0	8	26
Total Number of Persons	56	0	24	80

## Households without Children

	Emergency Shelter	Transitional Housing	Unsheltered	Total
<b>Total Number of Households</b>	506	6	766	1,278
<b>Total Number of Persons</b>	524	7	1,034	1,565
<b>Age</b>				
Under 18	--	--	--	--
18-24 years old	16	6	54	76
25-34 years old	64	0	193	257
35-44 years old	106	0	238	344
45-54 years old	107	1	237	345
55-64 years old	138	0	233	371
65+ years old	93	0	79	172
<b>Gender</b>				
Woman (Girl if child)	181	4	178	363
Man (Boy if child)	342	3	826	1171
Culturally Specific Identity	0	0	0	0
Transgender	1	0	20	21
Non-Binary	0	0	0	0
Questioning	0	0	0	0
Different identity	0	0	0	0
More than one gender	0	0	10	10

	Emergency Shelter	Transitional Housing	Unsheltered	Total
<b>Race and Ethnicity</b>				
American Indian, Alaskan Native, or Indigenous	6	0	10	16
American Indian, Alaskan Native, or Indigenous and Hispanic	18	1	5	24
Asian or Asian American	24	0	15	39
Asian or Asian American and Hispanic	2	0	0	2
Black, African American, or African	79	2	127	208
Black, African American, or African and Hispanic	5	0	5	10
Hispanic	17	0	609	626
Middle Eastern or North African	4	0	0	4
Middle Eastern or North African and Hispanic	0	0	5	5
Native Hawaiian or Pacific Islander	20	0	10	30
Native Hawaiian or Pacific Islander and Hispanic	0	0	0	0
White	215	2	218	435
White and Hispanic	124	2	10	136
Multi-Racial and Hispanic	1	0	0	1
Multi-Racial (Not Hispanic)	9	0	20	29
<b>Chronically Homeless</b>				
Total Number of Persons	246	0	386	632

## Households with Children (under age 18) and No Adults

	Emergency Shelter	Transitional Housing	Unsheltered	Total
<b>Total Number of Households</b>	0	2	0	2
Total Number of Persons	0	2	0	2
<b>Age</b>				
Under 18	0	2	0	2
18-24 years old	--	--	--	--
25-34 years old	--	--	--	--
35-44 years old	--	--	--	--
45-54 years old	--	--	--	--
55-64 years old	--	--	--	--
65+ years old	--	--	--	--
<b>Gender</b>				
Woman (Girl if child)	0	1	0	1
Man (Boy if child)	0	1	0	1
Culturally Specific Identity	0	0	0	0
Transgender	0	0	0	0
Non-Binary	0	0	0	0
Questioning	0	0	0	0
Different identity	0	0	0	0
More than one gender	0	0	0	0
<b>Race and Ethnicity</b>				
American Indian, Alaskan Native, or Indigenous	0	0	0	0
American Indian, Alaskan Native, or Indigenous and Hispanic	0	0	0	0
Asian or Asian American	0	0	0	0
Asian or Asian American and Hispanic	0	0	0	0
Black, African American, or African	0	0	0	0
Black, African American, or African and Hispanic	0	0	0	0
Hispanic	0	0	0	0
Middle Eastern or North African	0	0	0	0
Middle Eastern or North African and Hispanic	0	0	0	0
Native Hawaiian or Pacific Islander	0	0	0	0
Native Hawaiian or Pacific Islander and Hispanic	0	0	0	0
White	0	0	0	0
White and Hispanic	0	2	0	2
Multi-Racial and Hispanic	0	0	0	0
Multi-Racial (Not Hispanic)	0	0	0	0
<b>Chronically Homeless</b>				
Total Number of Persons	0	0	0	0

## VETERAN HOUSEHOLDS ONLY

### Veteran Households with at Least one Adult and One Child

	Emergency Shelter	Transitional Housing	Unsheltered	Total
<b>Total Number of Households</b>	7	0	0	7
<b>Total Number of Persons</b>	25	0	0	25
<b>Total Number of Veterans</b>	7	0	0	7
<b>Gender (Veterans Only)</b>				
Woman (Girl if child)	1	0	0	1
Man (Boy if child)	6	0	0	6
Culturally Specific Identity	0	0	0	0
Transgender	0	0	0	0
Non-Binary	0	0	0	0
Questioning	0	0	0	0
Different identity	0	0	0	0
More than one gender	0	0	0	0
<b>Race and Ethnicity (Veterans Only)</b>				
American Indian, Alaskan Native, or Indigenous	0	0	0	0
American Indian, Alaskan Native, or Indigenous and Hispanic	0	0	0	0
Asian or Asian American	0	0	0	0
Asian or Asian American and Hispanic	0	0	0	0
Black, African American, or African	3	0	0	3
Black, African American, or African and Hispanic	0	0	0	0
Hispanic	2	0	0	2
Middle Eastern or North African	0	0	0	0
Middle Eastern or North African and Hispanic	0	0	0	0
Native Hawaiian or Pacific Islander	0	0	0	0
Native Hawaiian or Pacific Islander and Hispanic	0	0	0	0
White	2	0	0	2
White and Hispanic	0	0	0	0
Multi-Racial and Hispanic	0	0	0	0
Multi-Racial (Not Hispanic)	0	0	0	0
<b>Chronically Homeless</b>				
Total Number of Persons	0	0	0	0

## Veteran Households without Children

	Emergency Shelter	Transitional Housing	Unsheltered	Total
<b>Total Number of Households</b>	25	0	10	35
<b>Total Number of Persons</b>	26	0	10	36
<b>Total Number of Veterans</b>	25	0	10	35
<b>Gender (Veterans Only)</b>				
Woman (Girl if child)	1	0	0	1
Man (Boy if child)	24	0	10	34
Culturally Specific Identity	0	0	0	0
Transgender	0	0	0	0
Non-Binary	0	0	0	0
Questioning	0	0	0	0
Different identity	0	0	0	0
More than one gender	0	0	0	0
<b>Race and Ethnicity (Veterans Only)</b>				
American Indian, Alaskan Native, or Indigenous	0	0	0	0
American Indian, Alaskan Native, or Indigenous and Hispanic	0	0	0	0
Asian or Asian American	0	0	0	0
Asian or Asian American and Hispanic	0	0	0	0
Black, African American, or African	4	0	5	9
Black, African American, or African and Hispanic	1	0	0	1
Hispanic	0	0	5	5
Middle Eastern or North African	0	0	0	0
Middle Eastern or North African and Hispanic	0	0	0	0
Native Hawaiian or Pacific Islander	1	0	0	1
Native Hawaiian or Pacific Islander and Hispanic	0	0	0	0
White	16	0	0	16
White and Hispanic	3	0	0	3
Multi-Racial and Hispanic	0	0	0	0
Multi-Racial (Not Hispanic)	0	0	0	0
<b>Chronically Homeless</b>				
Total Number of Persons	11	0	10	21

## YOUTH HOUSEHOLDS

### Unaccompanied Youth Households

	Emergency Shelter	Transitional Housing	Unsheltered	Total
<b>Total Number of Households</b>	15	7	49	71
<b>Total Number of Persons</b>	15	7	49	71
<b>Age</b>				
Under 18	0	2	0	2
18-24 years old	15	5	49	69
<b>Gender</b>				
Woman (Girl if child)	7	3	15	25
Man (Boy if child)	8	4	24	36
Culturally Specific Identity	0	0	0	0
Transgender	0	0	10	10
Non-Binary	0	0	0	0
Questioning	0	0	0	0
Different identity	0	0	0	0
More than one gender	0	0	0	0
<b>Race and Ethnicity</b>				
American Indian, Alaskan Native, or Indigenous	0	0	0	0
American Indian, Alaskan Native, or Indigenous and Hispanic	0	1	0	1
Asian or Asian American	0	0	5	5
Asian or Asian American and Hispanic	0	0	0	0
Black, African American, or African	4	2	0	6
Black, African American, or African and Hispanic	0	0	0	0
Hispanic	1	0	34	35
Middle Eastern or North African	0	0	0	0
Middle Eastern or North African and Hispanic	0	0	0	0
Native Hawaiian or Pacific Islander	0	0	0	0
Native Hawaiian or Pacific Islander and Hispanic	0	0	0	0
White	2	2	5	9
White and Hispanic	7	2	5	14
Multi-Racial and Hispanic	0	0	0	0
Multi-Racial (Not Hispanic)	1	0	0	1
<b>Chronically Homeless</b>				
Total Number of Persons	1	0	15	16

## Parenting Youth Households

	Emergency Shelter	Transitional Housing	Unsheltered	Total
<b>Total Number of Households</b>	10	2	0	12
<b>Total Number of Persons</b>	29	8	0	37
<b>Age</b>				
Total Parenting Youth (Youth Parents Only)	14	3	0	17
Total Children in Parenting Youth Households	15	5	0	20
Number of Parenting Youth Under Age 18	0	0	0	0
Children in Households with Parenting Youth Under the Age 18	0	0	0	0
Number of Parenting Youth Age 18 to 24	14	3	0	17
Children in Households with Parenting Youth Age 18 to 24	15	5	0	20
<b>Gender (Youth Parents Only)</b>				
Woman (Girl if child)	10	2	0	12
Man (Boy if child)	4	1	0	5
Culturally Specific Identity	0	0	0	0
Transgender	0	0	0	0
Non-Binary	0	0	0	0
Questioning	0	0	0	0
Different identity	0	0	0	0
More than one gender	0	0	0	0
<b>Race and Ethnicity (Youth Parents Only)</b>				
American Indian, Alaskan Native, or Indigenous	0	0	0	0
American Indian, Alaskan Native, or Indigenous and Hispanic	0	0	0	0
Asian or Asian American	0	0	0	0
Asian or Asian American and Hispanic	0	0	0	0
Black, African American, or African	0	1	0	1
Black, African American, or African and Hispanic	0	0	0	0
Hispanic	6	1	0	7
Middle Eastern or North African	0	0	0	0
Middle Eastern or North African and Hispanic	0	0	0	0
Native Hawaiian or Pacific Islander	1	0	0	1
Native Hawaiian or Pacific Islander and Hispanic	0	0	0	0
White	1	0	0	1
White and Hispanic	6	1	0	7
Multi-Racial and Hispanic	0	0	0	0
Multi-Racial (Not Hispanic)	0	0	0	0
<b>Chronically Homeless</b>				
Total Number of Households	1	0	0	1
Total Number of Persons	3	0	0	3

## ADDITIONAL HOMELESS POPULATIONS

	Emergency Shelter	Transitional Housing	Unsheltered	Total
Adults with a Serious Mental Illness	153	12	258	423
Adults with a Substance Use Disorder	118	1	164	283
Adults with HIV/AIDS	9	0	20	29
Adult Survivors of Domestic Violence	26	1	81	108

# APPENDIX 3: UNSHELTERED HOMELESS SURVEY - ENGLISH

Hello, my name is \_\_\_\_\_ and I am a volunteer for San Mateo County. We are conducting a survey to better understand the needs of people experiencing homelessness. Your participation is voluntary, and your responses will be anonymous. You can also ask to stop the survey at any time. May I survey you for ten to fifteen minutes?

## General Questions (All)

<b>1. Did another volunteer or survey worker already ask you questions for the One Day Count?</b>			
<input type="checkbox"/> Yes <b>STOP SURVEY</b>		<input type="checkbox"/> No	
<b>2a. Where were you sleeping on the night of January 24th (Wednesday)?</b>			
If one of the following, <b>CONTINUE SURVEY:</b> <input type="checkbox"/> Abandoned building <input type="checkbox"/> Bus, train station, airport <input type="checkbox"/> Outdoor encampment – <b>GO TO 2B</b> ↓ <input type="checkbox"/> Park <input type="checkbox"/> Street or sidewalk <input type="checkbox"/> Under bridge/overpass <input type="checkbox"/> Vehicle/boat/RV – <b>GO TO 2B</b> ↓ <input type="checkbox"/> Other (describe):		If one of the following, <b>STOP SURVEY:</b> <input type="checkbox"/> Emergency shelter <input type="checkbox"/> House or apartment that you own or rent <input type="checkbox"/> Hospital <input type="checkbox"/> Jail <input type="checkbox"/> In a place you are being evicted from within 2 weeks <input type="checkbox"/> Motel/hotel – paid for by an agency <input type="checkbox"/> Motel/hotel – paid for with your own funds <input type="checkbox"/> Transitional housing <input type="checkbox"/> Treatment program <input type="checkbox"/> With a friend or family in their house/apartment	
<b>2b. What type of vehicle or structure are you sleeping in?</b>		<b>2c. Were you staying at a safe parking program?</b>	
<input type="checkbox"/> Car <input type="checkbox"/> RV <b>GO TO 2C</b> → <input type="checkbox"/> Van <input type="checkbox"/> Boat <input type="checkbox"/> Tent <input type="checkbox"/> Makeshift shelter <input type="checkbox"/> Other (describe):		<input type="checkbox"/> Yes <input type="checkbox"/> No - <b>IF RV/VAN GO TO 2D</b> ↓ <b>2d. RV/van location (if not safe parking):?</b> <input type="checkbox"/> RV park - <b>GO TO 2E</b> ↓ <input type="checkbox"/> Side of road <input type="checkbox"/> Other (describe):	
		<b>2e. RV park details (select all that apply):</b>	
		<input type="checkbox"/> Long-term stay <input type="checkbox"/> Temporary stay <input type="checkbox"/> Regular access to water, sewer/septic, & electricity	
<b>3. Including yourself, how many adults and children are there in your household who slept in the same location with you on the night of January 24th?</b>			
Number of adults (age 18 and older): _____		Number of children (age 17 and under): _____	
<b>4. To make sure we don't survey you twice, may I have your initials? First: _____ Last: _____</b>			
<b>5. What is your month of birth? _____</b>			
<b>6a. How old are you? _____</b>		<b>6b. What age range do you fall into?</b>	
<b>IF HESITANT GO TO 6B</b> →		<input type="checkbox"/> Under 18	<input type="checkbox"/> 18 to 24
		<input type="checkbox"/> 25 to 34	<input type="checkbox"/> 35 to 44
		<input type="checkbox"/> 45 to 54	<input type="checkbox"/> 55 to 64
		<input type="checkbox"/> 65+	

<b>7. What is your gender? (select all that apply):</b>		
<input type="checkbox"/> Woman (Girl if Child)	<input type="checkbox"/> Questioning	
<input type="checkbox"/> Man (Boy if Child)	<input type="checkbox"/> Different Identity	
<input type="checkbox"/> Transgender	<input type="checkbox"/> Don't know	
<input type="checkbox"/> Non-Binary	<input type="checkbox"/> Refused	
<input type="checkbox"/> Culturally Specific Identity		
<b>8. What is your race/ethnicity? (select all that apply)</b>		
<input type="checkbox"/> American Indian, Alaska Native, or Indigenous	<input type="checkbox"/> Asian or Asian American	
<input type="checkbox"/> Hispanic/Latina/e/o	<input type="checkbox"/> Native Hawaiian or Pacific Islander	
<input type="checkbox"/> Black, African American, or African	<input type="checkbox"/> Don't know	
<input type="checkbox"/> Middle Eastern or North African	<input type="checkbox"/> Refused	
<input type="checkbox"/> White		
<b>9. Is this the first time you've been homeless?</b>		<b>10. How long have you been homeless this time?</b>
<input type="checkbox"/> Yes <input type="checkbox"/> No		<input type="checkbox"/> 0-3 months
<input type="checkbox"/> Refused		<input type="checkbox"/> 4-6 months
		<input type="checkbox"/> 2-3 years
		<input type="checkbox"/> 7-11 months
		<input type="checkbox"/> 3+ years
<b>11. How many months did you stay in shelters or on the streets over the past 3 years? (since Feb 2021)</b>		<b>12. Including this time, how many separate times have you stayed in shelter or on the streets in the past 3 years? (since Feb 2021)</b>
<input type="checkbox"/> 0-3 months	<input type="checkbox"/> 4-6 months	<input type="checkbox"/> 7-11 months
<input type="checkbox"/> 1-2 years	<input type="checkbox"/> 2-3 years	<input type="checkbox"/> 3+ years
<input type="checkbox"/> Don't know	<input type="checkbox"/> Refused	
<input type="checkbox"/> Fewer than 4 times		
<input type="checkbox"/> 4 or more times		
<input type="checkbox"/> Don't know		
<input type="checkbox"/> Refused		

**Age 18 or older:** The next set of questions asks about sensitive topics. You don't have to answer any question that you don't want to, but your feedback will help us improve services in the community.

<b>13a. Have you ever served in the United States Armed Forces (Army, Navy, Air Force, Marine Corps, Coast Guard, or Space Force) or were you ever called into active duty as a member of the National Guard or as a Reservist?</b>		<b>13b. Have you ever received health care or benefits from a Veterans Administration Medical Center?</b>	
<input type="checkbox"/> Yes – go to 13b→		<input type="checkbox"/> Yes	
<input type="checkbox"/> No		<input type="checkbox"/> No	
<input type="checkbox"/> Refused		<input type="checkbox"/> Don't know	
		<input type="checkbox"/> Refused	
<b>14. Do you have any source of money or how do you make money? (select all that apply)</b>			
<input type="checkbox"/> Disability benefits (Supplemental Security Income - SSI, Social Security Disability Insurance - SSDI, or Veteran's Disability Benefits)			
<input type="checkbox"/> Part-time job		<input type="checkbox"/> Multiple part-time jobs	
<input type="checkbox"/> Full-time job		<input type="checkbox"/> Unemployment benefits	
<input type="checkbox"/> Money from friends or family		<input type="checkbox"/> Social Security retirement benefits	
<input type="checkbox"/> Public benefits (General Assistance, CalWORKS)		<input type="checkbox"/> None	
<input type="checkbox"/> Refused			
<input type="checkbox"/> Other (describe):			

<b>15. Do you have a substance use problem?</b> <input type="checkbox"/> Alcohol use <input type="checkbox"/> Drug use <input type="checkbox"/> Both <input type="checkbox"/> No <input type="checkbox"/> Don't know <input type="checkbox"/> Refused		<b>16. Do you have psychiatric or emotional conditions such as depression, PTSD, or schizophrenia?</b> <input type="checkbox"/> Yes <input type="checkbox"/> No <input type="checkbox"/> Don't know <input type="checkbox"/> Refused	
if yes } If yes, is this a long-term disability that keeps you from holding a job or living in stable housing? <input type="checkbox"/> Yes <input type="checkbox"/> Don't know		if yes } If yes, is this a long-term disability that keeps you from holding a job or living in stable housing? <input type="checkbox"/> Yes <input type="checkbox"/> No <input type="checkbox"/> Don't know <input type="checkbox"/> Refused	
<b>17. Do you have any on-going health problems (such as diabetes or heart disease)?</b> <input type="checkbox"/> Yes <input type="checkbox"/> No <input type="checkbox"/> Don't know <input type="checkbox"/> Refused		<b>18. Do you have a physical disability?</b> <input type="checkbox"/> Yes <input type="checkbox"/> No <input type="checkbox"/> Don't know <input type="checkbox"/> Refused	
if yes } If yes, is this a long-term disability that keeps you from holding a job or living in stable housing? <input type="checkbox"/> Yes <input type="checkbox"/> No <input type="checkbox"/> Don't know <input type="checkbox"/> Refused		If yes, is this a long-term disability that keeps you from holding a job or living in stable housing? <input type="checkbox"/> Yes <input type="checkbox"/> No <input type="checkbox"/> Don't know <input type="checkbox"/> Refused	
<b>19. Do you have a developmental disability?</b> <input type="checkbox"/> Yes <input type="checkbox"/> No <input type="checkbox"/> Don't know <input type="checkbox"/> Refused		<b>20. Do you have AIDS or an HIV-related illness?</b> <input type="checkbox"/> Yes <input type="checkbox"/> No <input type="checkbox"/> Don't know <input type="checkbox"/> Refused	
<b>21. Are you currently experiencing homelessness because you are fleeing domestic violence, dating violence, sexual assault, or stalking?</b> <input type="checkbox"/> Yes <input type="checkbox"/> No <input type="checkbox"/> Don't know <input type="checkbox"/> Refused			

**Transitional Age Youth (Age 18 to 24)**

<b>Y1. What sexual orientation do you identify as?</b> <input type="checkbox"/> Straight/heterosexual <input type="checkbox"/> Bisexual <input type="checkbox"/> Refused			<input type="checkbox"/> Lesbian <input type="checkbox"/> Questioning/Unsure <input type="checkbox"/> Other (describe):			<input type="checkbox"/> Gay <input type="checkbox"/> Don't know											
<b>Y2. Are you expecting to become a parent in the next nine months?</b> <input type="checkbox"/> Yes <input type="checkbox"/> No <input type="checkbox"/> Don't know <input type="checkbox"/> Refused																	
<b>Y3. Are you currently enrolled in school, trade school/vocational program, or college?</b> <input type="checkbox"/> Yes <input type="checkbox"/> No <input type="checkbox"/> Refused																	
<b>Y4. What is the highest grade level of schooling you completed?</b> <input type="checkbox"/> Less than grade 5 <input type="checkbox"/> Grades 7-8 <input type="checkbox"/> Grade 12/high school diploma <input type="checkbox"/> Some college <input type="checkbox"/> Bachelor's degree <input type="checkbox"/> School program does not have grade levels <input type="checkbox"/> Don't know									<input type="checkbox"/> Grades 5-6 <input type="checkbox"/> Grades 9-11 <input type="checkbox"/> GED <input type="checkbox"/> Associate's degree <input type="checkbox"/> Graduate degree <input type="checkbox"/> Vocational certification <input type="checkbox"/> Refused								
<b>Y5. To stay in housing, have you ever stayed...?</b> <input type="checkbox"/> With someone you don't know or trust <input type="checkbox"/> Somewhere that didn't feel emotionally safe <input type="checkbox"/> With a sexual partner that you wouldn't have otherwise									<input type="checkbox"/> Somewhere that didn't feel physically safe <input type="checkbox"/> On a couch or floor for longer than a week <input type="checkbox"/> Refused								

**Additional questions (All):**

<b>22. How long have you lived in San Mateo County?</b>	
<input type="checkbox"/> < 3 months	<input type="checkbox"/> 3 to 6 months
<input type="checkbox"/> 7 to 11 months	<input type="checkbox"/> 12 – 23 months (1 – 2 years)
<input type="checkbox"/> 24 – 35 months (2 – 3 years)	<input type="checkbox"/> 36+ months (3+ years)

<b>23. Where were you living at the time you most recently became homeless?</b>	
<input type="checkbox"/> Renting a home or apartment	<input type="checkbox"/> Living in a home owned by you or your partner
<input type="checkbox"/> Living with relatives	<input type="checkbox"/> In shelter or transitional housing
<input type="checkbox"/> In jail, prison, or a juvenile detention center	<input type="checkbox"/> Staying with friends
<input type="checkbox"/> Living in a motel	<input type="checkbox"/> In foster care
<input type="checkbox"/> In a treatment center	<input type="checkbox"/> Refused
<input type="checkbox"/> Other (describe):	

For questions 24 and 25, please consult the list of cities and counties on the last page and write in the answer in the space provided.

<b>24. Where were you living geographically when you became homeless most recently?</b>	
<input type="checkbox"/> San Mateo County – write in city: _____	<input type="checkbox"/> Other county in CA – write in county: _____
<input type="checkbox"/> Other state	<input type="checkbox"/> Refused

<b>25. Is your hometown in San Mateo County?</b>	
<input type="checkbox"/> Yes – write in city: _____	<input type="checkbox"/> No
<input type="checkbox"/> Refused	

<b>26. What do you think are the primary events or conditions that led to your homelessness? (SELECT TOP 3 THAT APPLY)</b>	
<input type="checkbox"/> Lost job	<input type="checkbox"/> Eviction
<input type="checkbox"/> Landlord raised rent	<input type="checkbox"/> Alcohol or drug use
<input type="checkbox"/> Incarceration/probation or parole restrictions	<input type="checkbox"/> Divorce/separation/break-up
<input type="checkbox"/> Argument with family or friend who asked us to leave	<input type="checkbox"/> Family/domestic violence
<input type="checkbox"/> Lost childcare	<input type="checkbox"/> Hospitalization/inpatient treatment
<input type="checkbox"/> Foreclosure	<input type="checkbox"/> Aging out of foster care
<input type="checkbox"/> Mental health issues	<input type="checkbox"/> Reduced work hours
<input type="checkbox"/> Other (describe):	<input type="checkbox"/> Illness/medical problem
	<input type="checkbox"/> Refused

<b>27. Was the primary condition you just identified related to the COVID-19 pandemic?</b>			
<input type="checkbox"/> Yes	<input type="checkbox"/> No	<input type="checkbox"/> Don't know	<input type="checkbox"/> Refused

<b>28. Are you currently using any of the following services or assistance? (select all that apply)</b>	
<input type="checkbox"/> Food pantry/free meals	<input type="checkbox"/> Adult education
<input type="checkbox"/> Transportation assistance (bus tickets, Redi-Wheels)	<input type="checkbox"/> Medi-Cal or other health coverage
<input type="checkbox"/> Job search assistance centers	<input type="checkbox"/> Legal assistance
<input type="checkbox"/> General health services	<input type="checkbox"/> Job/vocational training
<input type="checkbox"/> CalFresh (food stamps)	<input type="checkbox"/> Mental health services
<input type="checkbox"/> Other (describe):	<input type="checkbox"/> Not using any services

<b>29a. Were you ever in foster care?</b>		<b>29b. Was this foster care in San Mateo County?</b>	
<input type="checkbox"/> Yes - go to 29b→		<input type="checkbox"/> Yes - go to 29↓	<input type="checkbox"/> No
<input type="checkbox"/> No		<b>29c. Did you age out of foster care in San Mateo?</b>	
<input type="checkbox"/> Refused		<input type="checkbox"/> Yes	<input type="checkbox"/> No

<b>30. As a reminder, your response will remain anonymous. Are you currently on probation or parole?</b>					
<input type="checkbox"/> Probation	<input type="checkbox"/> Parole	<input type="checkbox"/> Both	<input type="checkbox"/> No	<input type="checkbox"/> Don't know	<input type="checkbox"/> Refused

Those are all the questions we have for you. Thank you for taking the survey and being a part of this important data collection effort.

## LIST OF CITIES IN SAN MATEO COUNTY

Atherton	Emerald Lake Hills	Menlo Oaks	Princeton-by-the-Sea
Belmont	Foster City	Menlo Parks	Redwood City
Brisbane	Half Moon Bay Highlands	Millbrae	San Bruno
Broadmoor	Baywood Park	Montara	San Carlos
Burlingame	Hillsborough	Moss Beach	San Gregorio
Burlingame Hills	Kings Mountain	North Fair Oaks	San Mateo
Colma	La Honda	Pacifica	Sky Londa
Daly City	Ladera	Palomar Park	South San Francisco
Devonshire	Loma Mar	Pescadero	West Menlo Park
East Palo Alto	Los Trancos Woods	Portola Valley	Woodside
El Granada			

## LIST OF COUNTIES IN CA

Alameda	Kings	Orange	Shasta
Alpine	Lake	Placer	Sierra
Amador	Lassen	Plumas	Siskiyou
Butte	Los Angeles	Riverside	Solano
Calaveras	Madera	Sacramento	Sonoma
Colusa	Marin	San Benito	Stanislaus
Contra Costa	Mariposa	San Bernardino	Sutter
Del Norte	Mendocino	San Diego	Tehama
El Dorado	Merced	San Francisco	Trinity
Fresno	Modoc	San Joaquin	Tulare
Glenn	Mono	San Luis Obispo	Tuolumne
Humboldt	Monterey	Santa Barbara	Ventura
Imperial	Napa	Santa Clara	Yolo
Inyo	Nevada	Santa Cruz	Yuba
Kern			

Please visit  
<https://www.smcgov.org/hsa/center-homelessness>  
for more information.



**COUNTY** OF **SAN MATEO**  
**HUMAN SERVICES AGENCY**