



Perspective 1



Owner:
Waterway Car Wash
727 Goddard Avenue
Chesterfield, MO 63005

Renovation For:
Waterway Car Wash
South Euclid, OH

Architect:
SP Architects
738 Westport Plaza
St. Louis, MO 63146
314-434-9700

11-27-2018
SP# 18002





Perspective 2



Owner:
Waterway Car Wash
727 Goddard Avenue
Chesterfield, MO 63005

Renovation For:
Waterway Car Wash
South Euclid, OH

Architect:
SP Architects
738 Westport Plaza
St. Louis, MO 63146
314-434-9700

11-27-2018
SP# 18002





Perspective 3



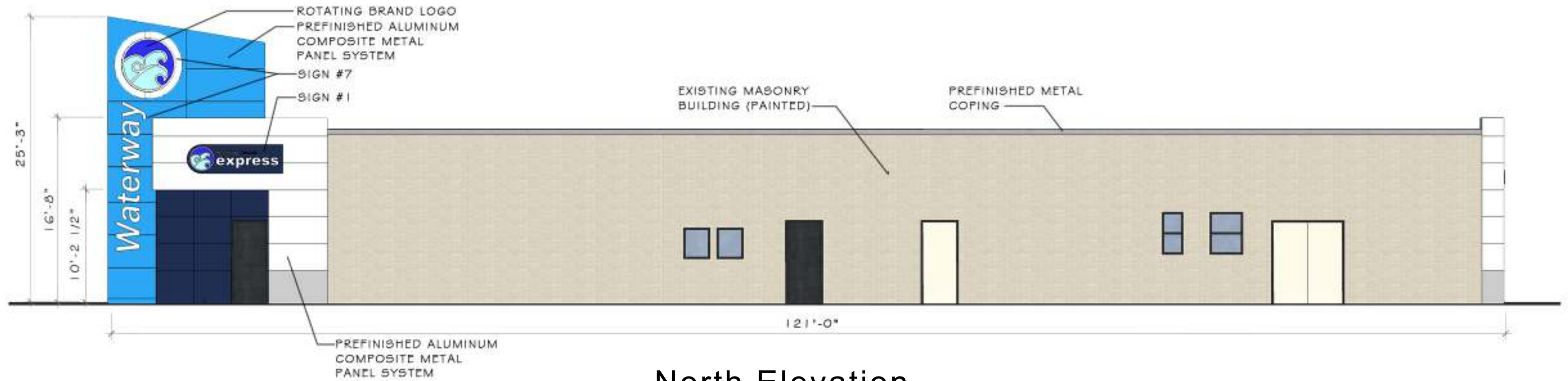
Owner:
 Waterway Car Wash
 727 Goddard Avenue
 Chesterfield, MO 63005

Renovation For:
Waterway Car Wash
 South Euclid, OH

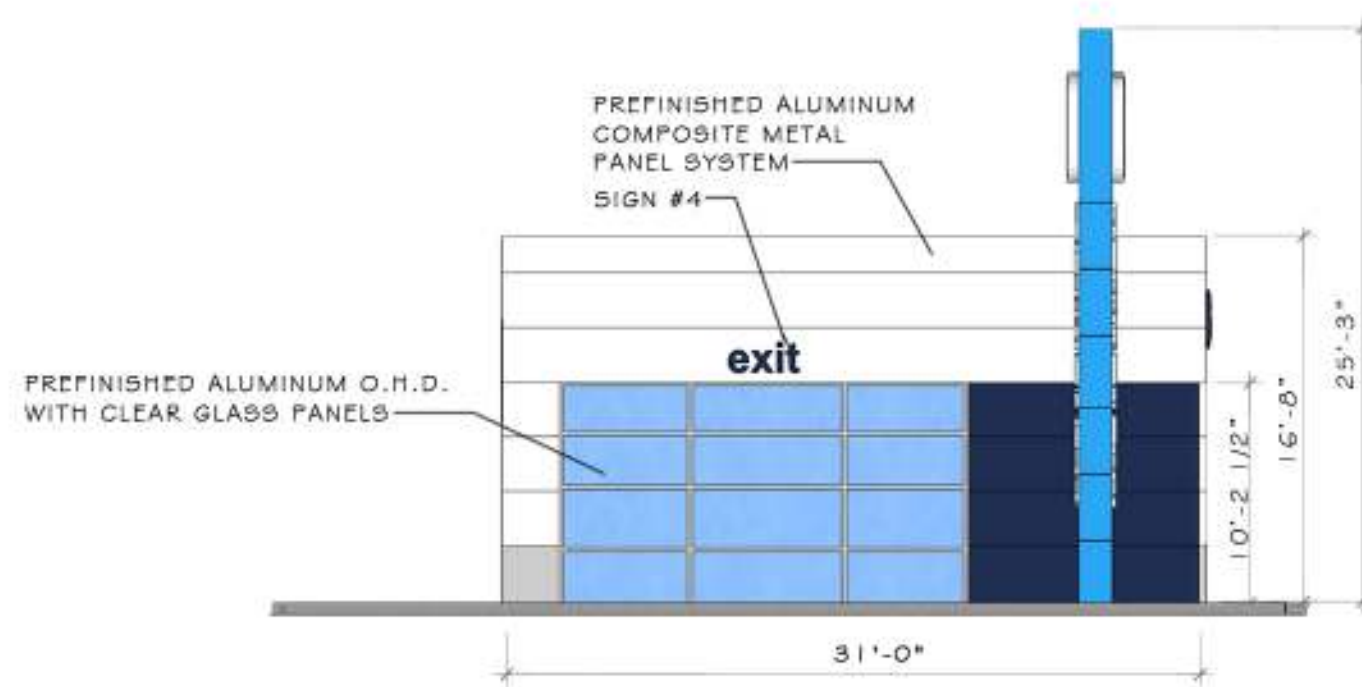
Architect:
 SP Architects
 738 Westport Plaza
 St. Louis, MO 63146
 314-434-9700

11-27-2018
 SP# 18002





North Elevation



East Elevation



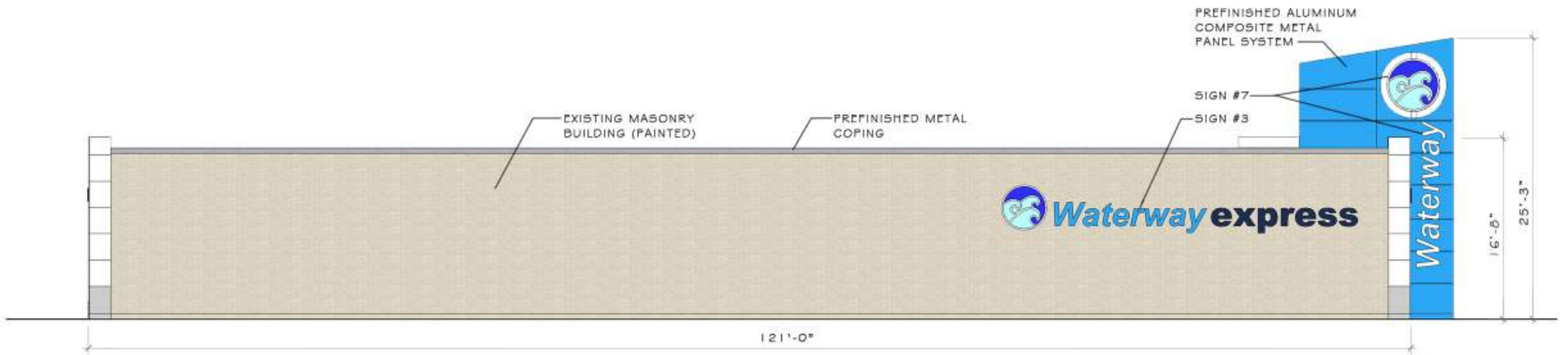
Owner:
Waterway Car Wash
727 Goddard Avenue
Chesterfield, MO 63005

Renovation For:
Waterway Car Wash
South Euclid, OH

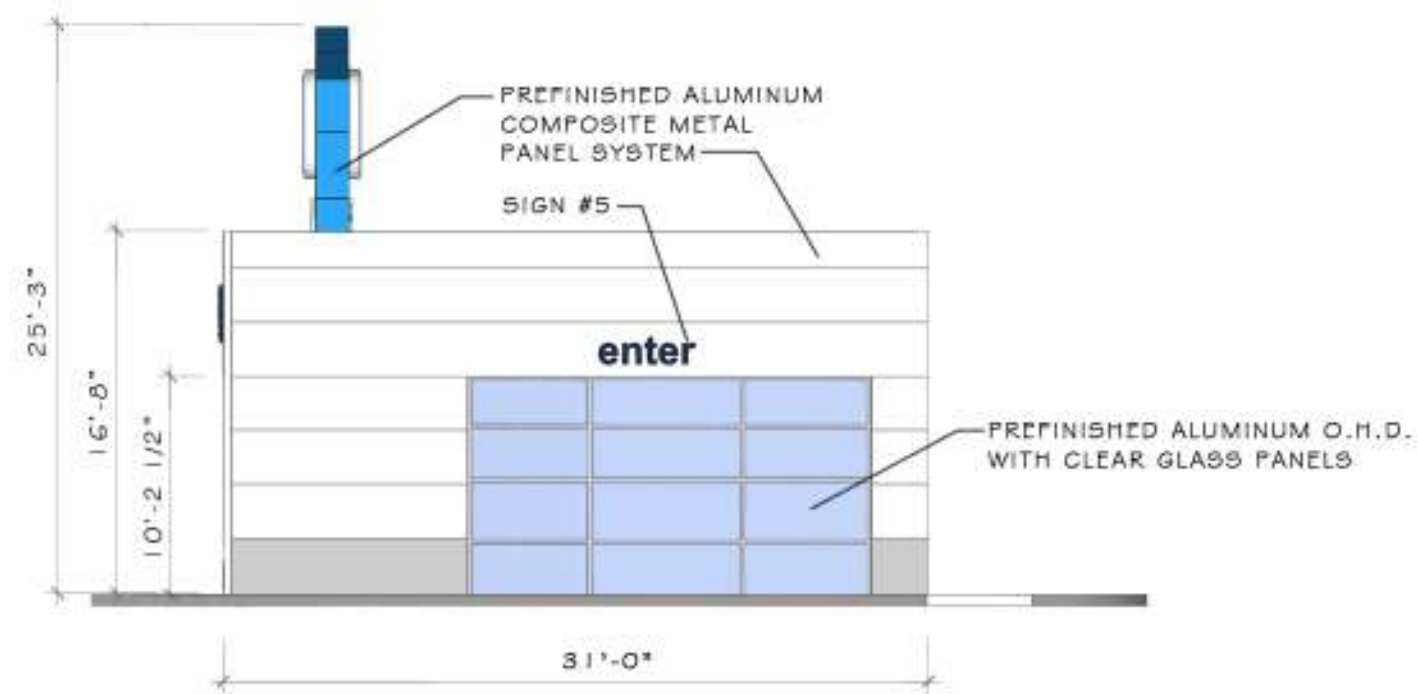
Architect:
SP Architects
738 Westport Plaza
St. Louis, MO 63146
314-434-9700

11-27-2018
SP# 18002





South Elevation



West Elevation



Owner:
Waterway Car Wash
727 Goddard Avenue
Chesterfield, MO 63005

Renovation For:
Waterway Car Wash
South Euclid, OH

Architect:
SP Architects
738 Westport Plaza
St. Louis, MO 63146
314-434-9700

11-27-2018
SP# 18002





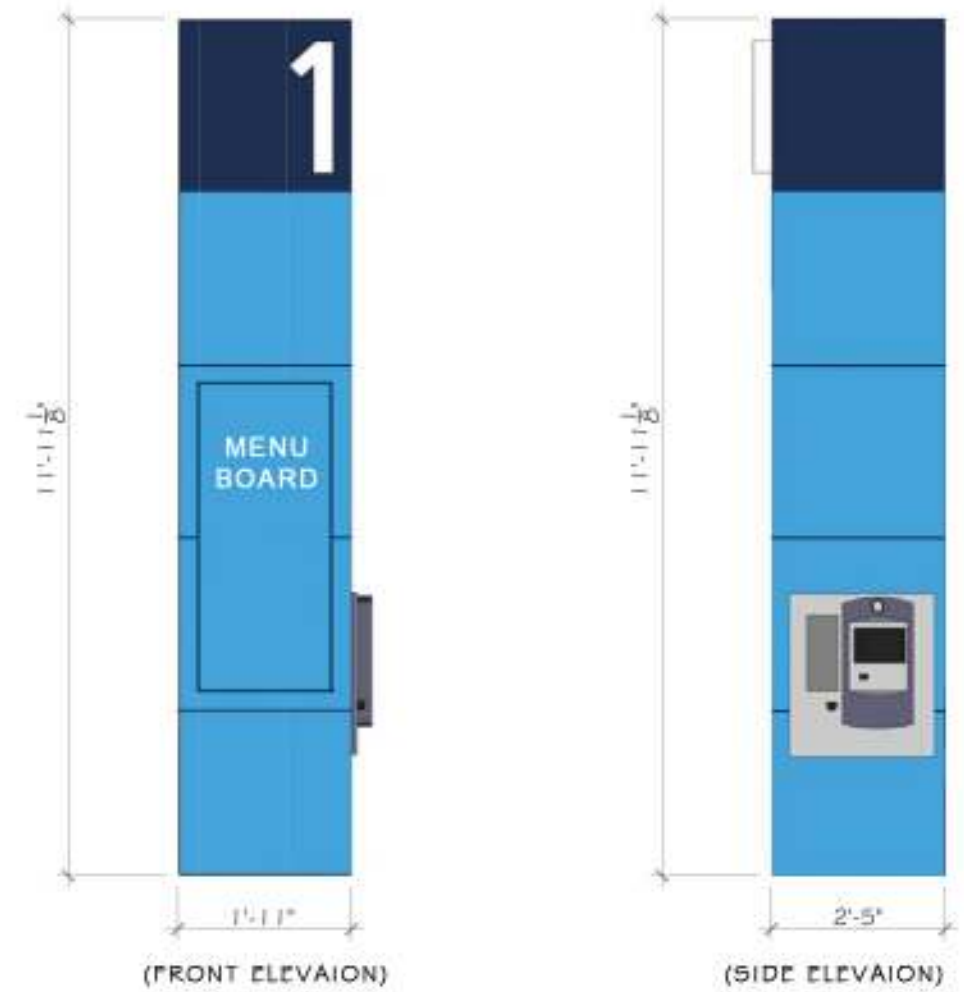
WATERWAY SIGN = 21.4 S.F.

THIS SIGN IS INTERNALLY LIT

SIGN #1

3/8" = 1'-0" (1) TOTAL

BUILDING SIGNAGE SQUARE FOOTAGE		
DESCRIPTION	S.F.	SUBTOTAL
SIGN #1 WATERWAY EXPRESS AND WAVE LOGO	= 21.4 S.F.	21.4 S.F.
SIGN #3 WAVE LOGO WATERWAY EXPRESS	= 14.9 S.F. = 52.7 S.F.	67.6 S.F.
SIGN #7 (1) WAVE LOGO WATERWAY	= 18.3 S.F. = 25.2 S.F.	43.5 S.F.
SIGN #7 (2) WAVE LOGO WATERWAY	= 18.3 S.F. = 25.2 S.F.	43.5 S.F.
BUILDING SIGNAGE SQUARE FOOTAGE TOTAL		176 S.F.



SIGN #2

3/8" = 1'-0" (2) TOTAL



WAVE SIGN = 14.9 S.F.

WATERWAY EXPRESS SIGN = 52.7 S.F.

THIS SIGN IS INTERNALLY LIT

SIGN #3

3/8" = 1'-0" (1) TOTAL



Owner:
Waterway Car Wash
727 Goddard Avenue
Chesterfield, MO 63005

Renovation For:
Waterway Car Wash
South Euclid, OH

Architect:
SP Architects
738 Westport Plaza
St. Louis, MO 63146
314-434-9700

11-27-2018
SP# 18002
S | P
architects



EXIT SIGN = 2.3 S.F.

THIS SIGN IS INTERNALLY LIT

SIGN #4

3/8" = 1'-0" (1) TOTAL

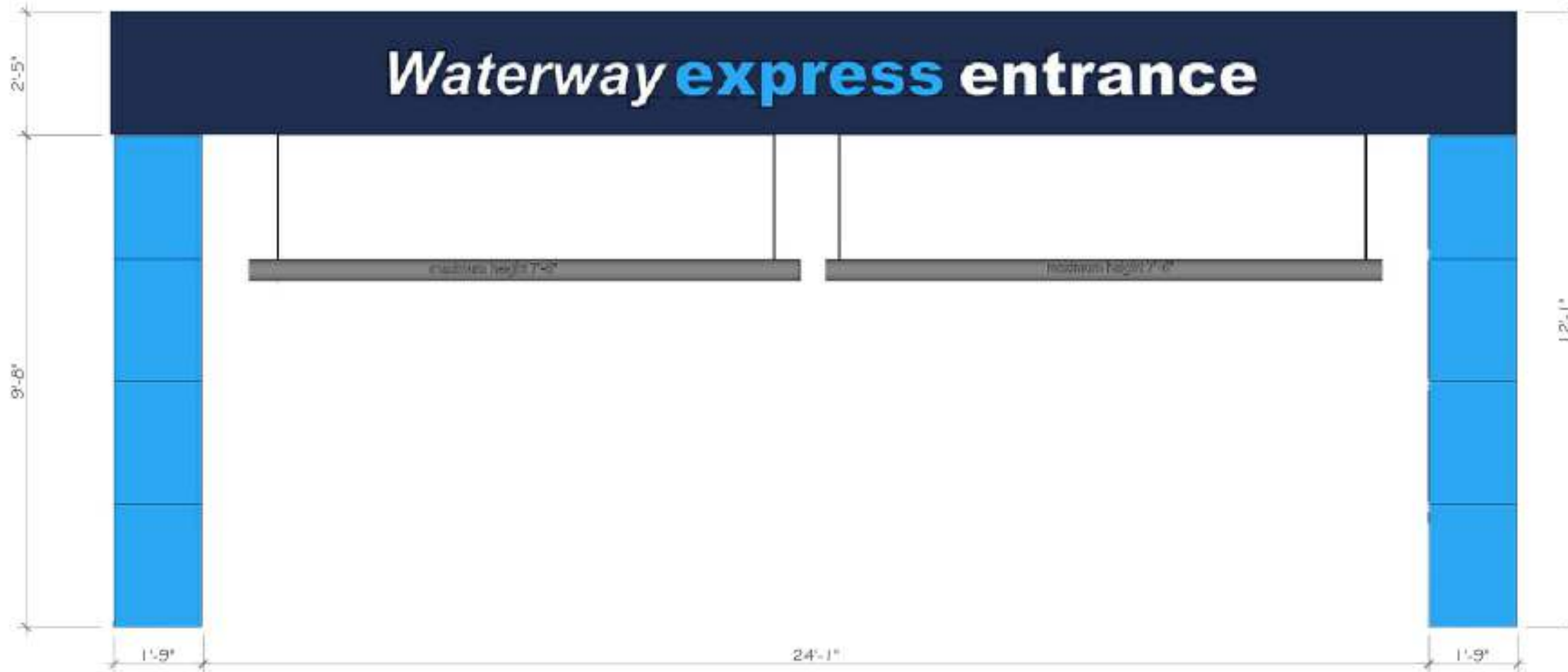


ENTER SIGN = 3.4 S.F.

THIS SIGN IS INTERNALLY LIT

SIGN #5

3/8" = 1'-0" (1) TOTAL

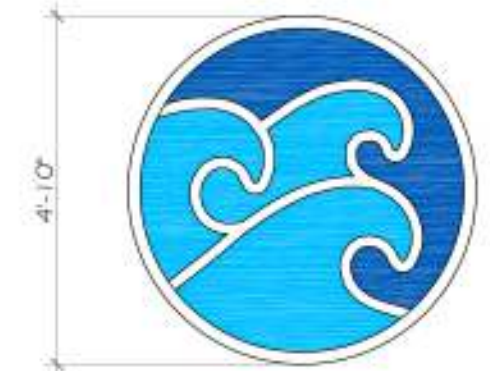


WATERWAY EXPRESS ENTRANCE SIGN = 12.2 S.F.

THIS SIGN IS INTERNALLY LIT

SIGN #6

3/8" = 1'-0" (1) TOTAL



WAVE SIGN = 18.3 S.F.

WATERWAY SIGN = 25.2 S.F.

THIS SIGN IS INTERNALLY LIT

SIGN #7

3/8" = 1'-0" (2) TOTAL