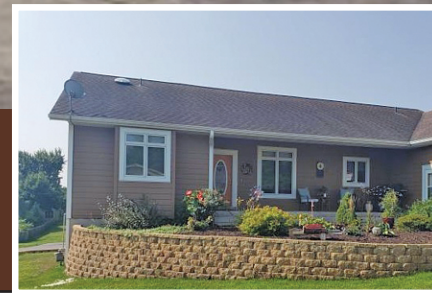
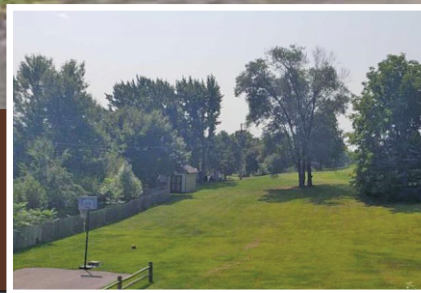


Sponsored FEATURED PROPERTY



Beautiful custom built home in Sparta awaits you! Situated on 1.32 acres but within the city and close to everything. Offering almost 4,000 square feet of living space there is room for everyone to enjoy this home. Featuring a total of 5 bedrooms with 3 bedrooms including the master bedroom, (which features a large walk closet) located on the main level and 2 additional bedrooms in the lower level. There are many ways to enjoy the great outdoors, from the deck which is off the main floor great room, the covered patio off the lower level family room or the

covered porch in the front. Your laundry problems are solved in this home which offers a laundry room on each floor! There are many upgrades: from the granite counters throughout, Beyer cabinets in the kitchen, bathrooms and the laundry rooms, new black stainless steel appliances in the kitchen, custom blinds throughout the home plus custom drapes in the living room, dining area and kitchen. The kitchen features a center island for casual sitting and the dining area is located off the kitchen with this open floor plan design. The lower level not only has the

additional bedrooms, but there is a family room, rec room and another kitchen that could easily be converted to a bar area, plus a storm shelter off the laundry room/utility room

You can easily store all your extras in the 3 plus stall attached garage that also has a shop or man cave off of it. New retaining wall and landscaping has just been completed.

Call Annetra today to schedule your private showing!

**1300 Saint Anne Street,
Sparta • \$349,900**

ANNETRA MUEHLENKAMP

REALTOR

608-487-2135

ANNETRA@GHREALTORS.COM

620 INDUSTRIAL DRIVE #4
SPARTA, WI 54656



**Gerrard-
Hoeschler**
REALTORS®



MLS 1602680