

# 2025 Deschutes National Forest Prescribed Burning

Prescribed burning is a critical tool to reduce the risk of catastrophic wildfire impacting our communities. Areas slated for prescribed burning receive thinning, mowing, mastication, and pile burning in preparation for returning low-intensity fire to the landscape.

Fire plays an integral role in Central Oregon's ecosystem. Some of the things we love most about our landscape, like Ponderosa pines, require frequent low-intensity fire to sustain.



Prescribed burns, which are primarily conducted in the spring and fall, are carefully planned and implemented under specific conditions including, temperature, wind, humidity, and vegetation moisture. These prescribed conditions help to ensure that the fire burns with a low-intensity and reduces the likelihood that heavy smoke will blow into nearby communities.



Firefighters work with Oregon Department of Environmental Quality, Oregon Department of Forestry Smoke Management, the Environmental Protection Agency, Oregon Health Authority and local public health agencies to conduct prescribed burns when conditions will minimize smoke impacts to communities. However, some smoke is inevitable and part of living in a fire-dependent ecosystem.



## Dates

Prescribed burns are planned around specific wind, weather, and moisture conditions. As such, ignition days can only be determined up to 72 to 24 hours in advance.

## Stay Informed

- Text **COFIRE** to **888-777** to receive text alerts on day of ignitions.
- Visit **CentralOregonFire.org** for planned prescribed burn updates, smoke preparedness resources, and air quality index (AQI) levels.
- Follow **@CentralORFire** on X (formerly Twitter) for prescribed burn updates including day of ignitions updates.

CENTRAL OREGON FIRE INFO



## Restoration Timeline



National Environmental  
Policy Act (NEPA)  
Planning



Thinning



Mowing &  
Mastication



Pile Burning



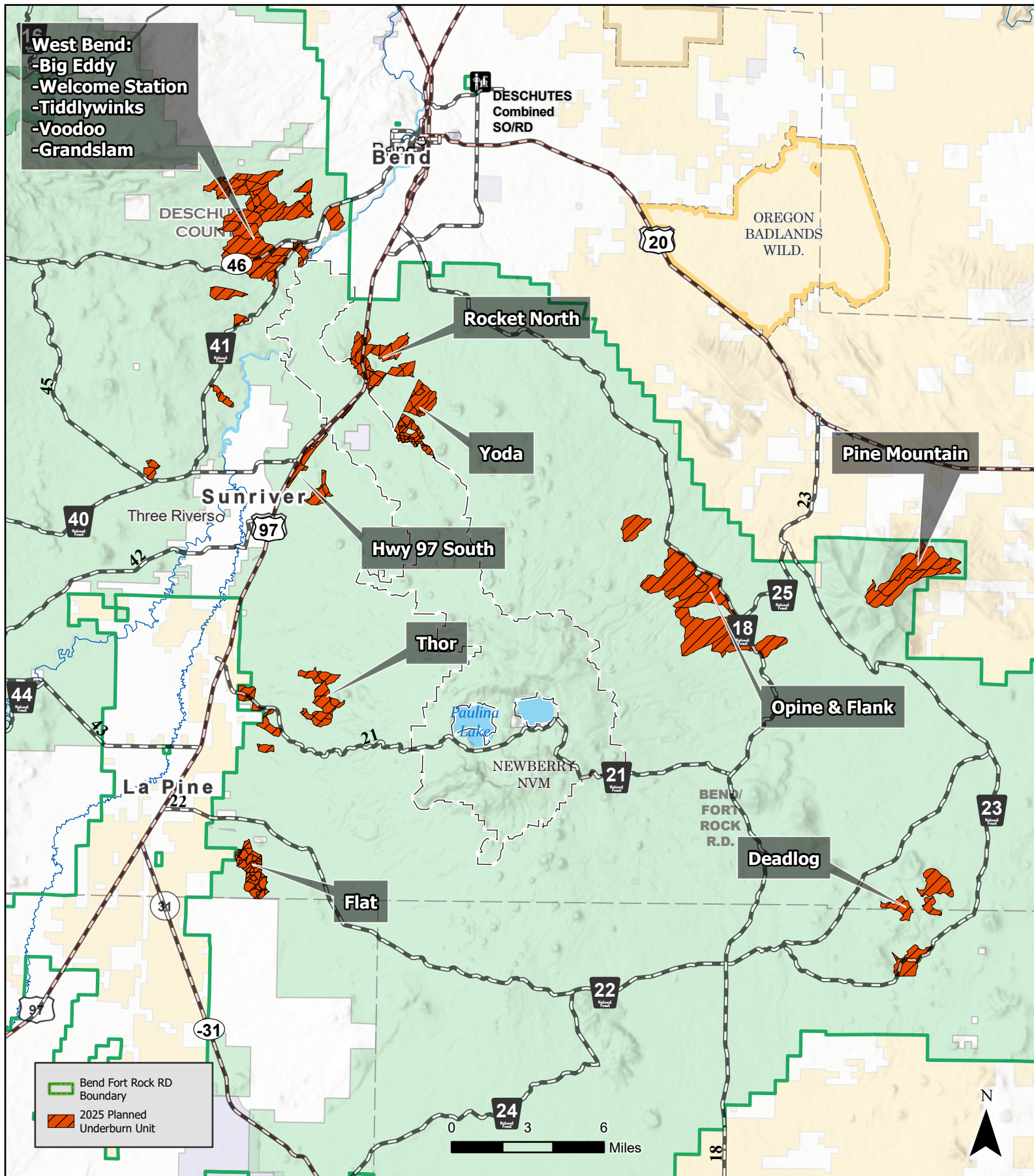
Prescribed Burning



Forest Service  
U.S. DEPARTMENT OF AGRICULTURE

USDA is an equal opportunity provider, employer and lender.

# 2025 Bend-Fort Rock Ranger District Prescribed Burn Locations

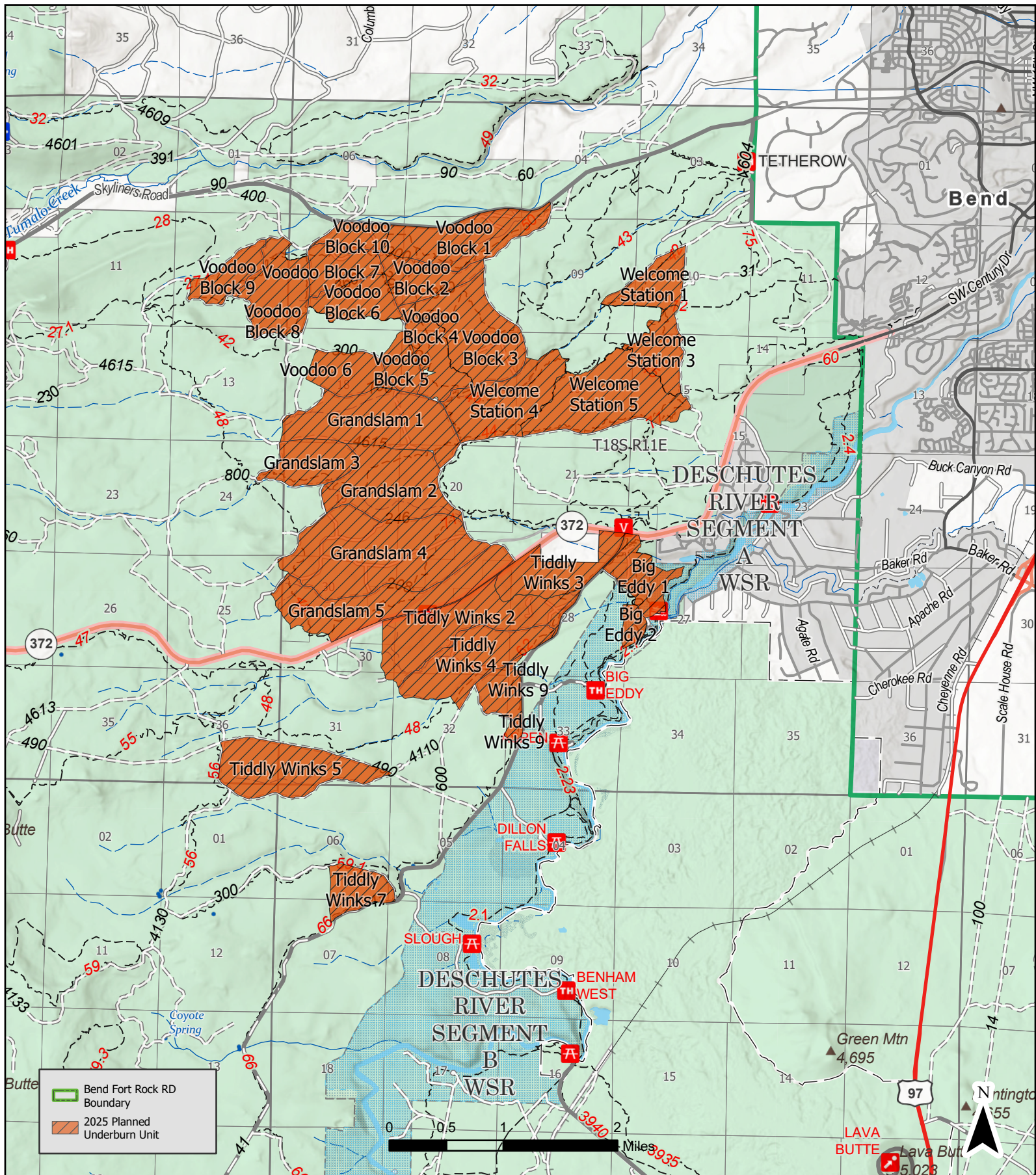


\*Please visit [centraloregonfire.org/prescribed-fire-smoke-plans/](https://centraloregonfire.org/prescribed-fire-smoke-plans/) for more information on potential prescribed fire locations in Central Oregon.





# 2025 Bend-Fort Rock Ranger District Prescribed Burn Locations West Bend Vicinity



\*Please visit [centraloregonfire.org/prescribed-fire-smoke-plans/](http://centraloregonfire.org/prescribed-fire-smoke-plans/) for more information on potential prescribed fire locations in Central Oregon.

