



GOP Likely to Gain Seats in Louisiana House, Senate

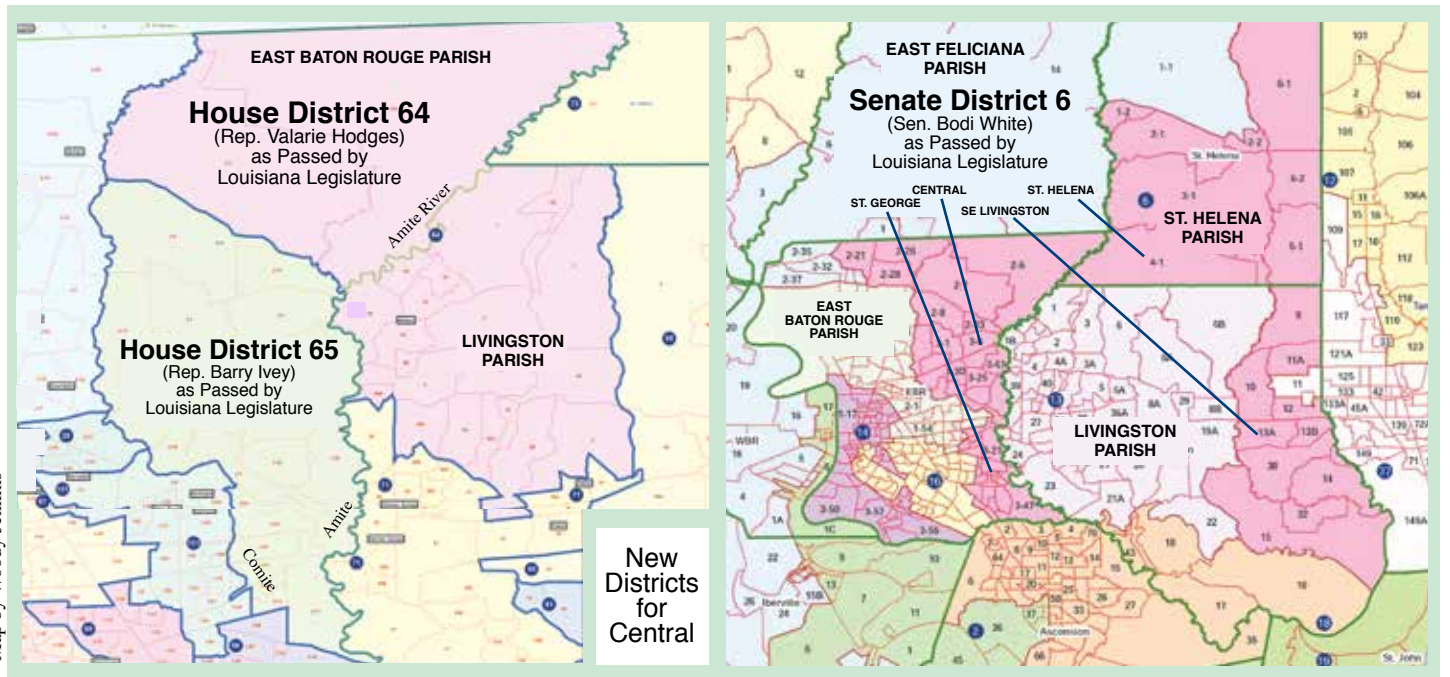
New Districts for Central

In Louisiana Senate, Significant Changes To Central's Seat Held by Bodi White

Woody Jenkins
 Editor

BATON ROUGE — The Louisiana Legislature has given final approval to bills reappportioning the Louisiana Senate and a separate bill reappportioning the Louisiana House of Representatives. The bills won with the support of every Republican in both bodies. Bills also passed to reapportion Louisiana's six Congressional districts, Louisiana Supreme Court, Public Service Commission, and Board of Elementary and Secondary Education (BESE).

The City of Central is currently served by one state senator, Sen. Bodi White (R-Central) and two



Map by Woody Jenkins

HOW HOUSE, SENATE REAPPORTIONMENT AFFECT CENTRAL — New district lines passed by Louisiana Legislature. state representatives, Reps. Valarie Hodges (R-Central and Watson) and Barry Ivey (R-Central). All three legislators are term-limited and all three voted for both the House and Senate reapportionment plans. White's Senate District 6 eliminated the southwestern part of Tangipahoa and added the eastern part of Livingston.

Rep. Valarie Hodges will have the option of running for the State Senate, either in Senate District 6 represented by Bodi White, or
See ALL THREE on Page 4

Governor Thrown Out of Court in Bid to Prosecute Rev. Tony Spell

Supreme Court Rejects Governor's Intervention

NEW ORLEANS — The Louisiana Supreme Court has thrown out a Motion to Intervene by Gov. John Bel Edwards in the criminal case against Rev. Tony Spell of Life Tabernacle Church in Central.

The court has before it a Motion to Quash by Pastor Spell to termi-

nate the criminal charges against the pastor. The governor had wanted to become a party in the case to help prosecute the pastor. That is unheard of.

The first problem is that allowing the governor to become a party and help prosecute would violate

separation of powers under Article II of the Louisiana Constitution. In reality, what the governor proposed to the court is a legal impossibility under Louisiana law.

Even worse than the governor's illegal Motion to Intervene was the fact the governor's attorney signed

the Motion to Intervene with the stamp of Attorney General Jeff Landry. It was the modern equivalent of forgery.

In fact, the Attorney General is on the other side of the case entirely. He had filed an *amicus* brief
See IS FORGING on Page 13

Privately, Some Legislators Considering Articles of Impeachment

Will Murder, Cover Up Bring Down JBE?

Video Shows Man Was Beaten to Death While Governor Said He Died in Car Crash

Woody Jenkins
 Editor

BATON ROUGE — If Gov. John Bel Edwards is impeached as some legislators want to do, his handling of the Ronald Greene case will certainly play a large role. The case involves the murder of a motorist and a coverup directly caused by the governor.

Greene failed to stop when told



Ronald Greene



Gov. John Bel Edwards

to do so by a State Police officer. He led the police on a chase at speeds of 115 miles per hour.

Police body cam videos show that once stopped Ronald Greene cooperated and did not resist arrest. Nevertheless, with six State Police and one Sheriff's deputy on hand, some of the State Police began to beat Greene until he died. All the while, Greene was saying he was sorry and begging for mercy. Near the end of the incredible ordeal, Greene is shown being drug face down across the street with his hands cuffed behind his back.

He died a few minutes later. The next morning, records obtained by the Associated Press show that the governor received
See GREENE on Page 9