

# QUARRY FIRE REPORT

## DEER CREEK CANYON PARK

### RESPONSE

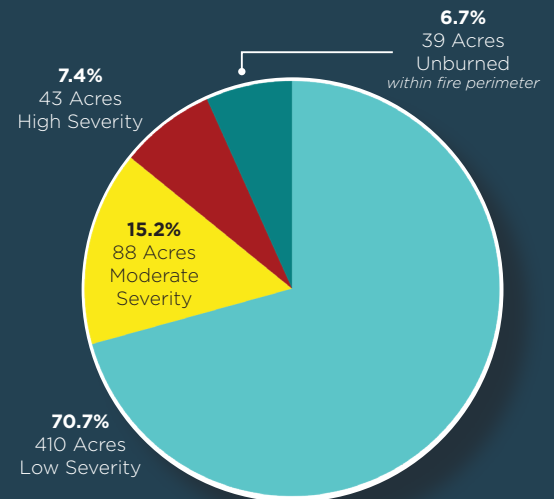
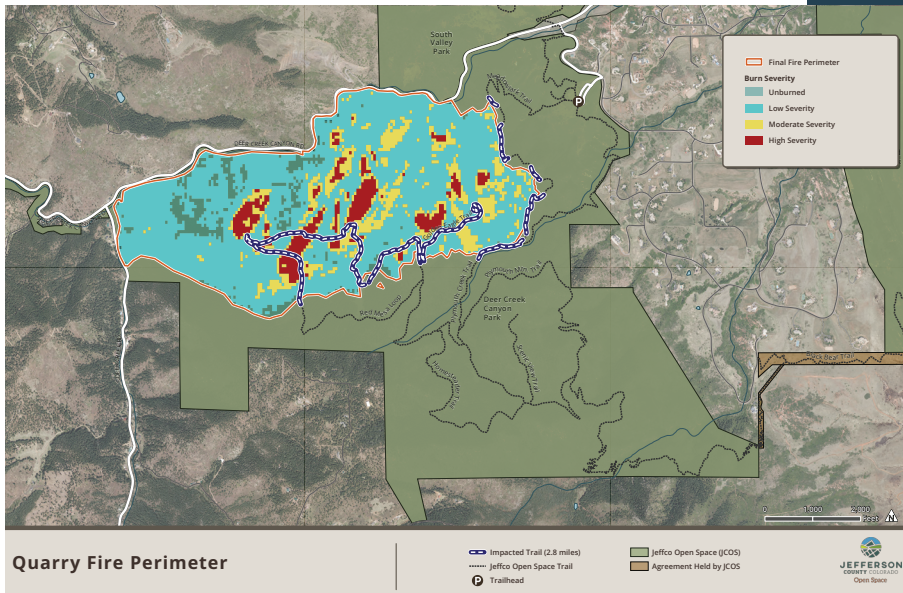
#### Quarry Fire | July 30-August 9, 2024

580 of 1,637 Acres burned (35%)

- 43 acres high severity
- 88 acres moderate severity
- 410 acres low severity
- 39 acres unburned (within fire perimeter)
- Bulldozed lines to create fuel breaks (2)
- Hotshots and firefighters established handlines
- Aerial slurry and water support

### BURN SEVERITY

Burn severity describes the loss or change in organic material, both vegetation and soil, resulting from wildfire. It helps predict ecological responses and recovery. High burn severity areas are more susceptible to long-term alterations such as flooding and debris flows, plant community shifts, and changes to wildlife habitat and populations. Erosion mitigation and ecological restoration efforts are focused in high burn severity areas and the drainages below them. As a mixed-severity fire, the Quarry Fire includes areas of low, moderate, and high burn severity and is ultimately ecologically beneficial due to the creation of a diverse patchwork of habitat types.



### RECOVERY

- Initial mop-up and assessments
- **Aug-Sep 2024** Mapping vegetation burn severity and soil burn severity
- **Aug-Nov 2024** Fuel break repairs: dozer and hand line reconstruction
- **Sep-Oct 2024** Erosion modeling
- **Oct-Dec 2024** Erosion mitigation planning
- **Winter 2024** Secured Emergency Watershed Protection (EWP) funding
- **Spring 2025** On-the-ground erosion mitigation
- **Spring 2025** Aerial seed and mulch application
- **April 2025** Rockfall hazard evaluation
- **Ongoing** Hazard tree mitigation



# DEER CREEK CANYON PARK

## REOPENING

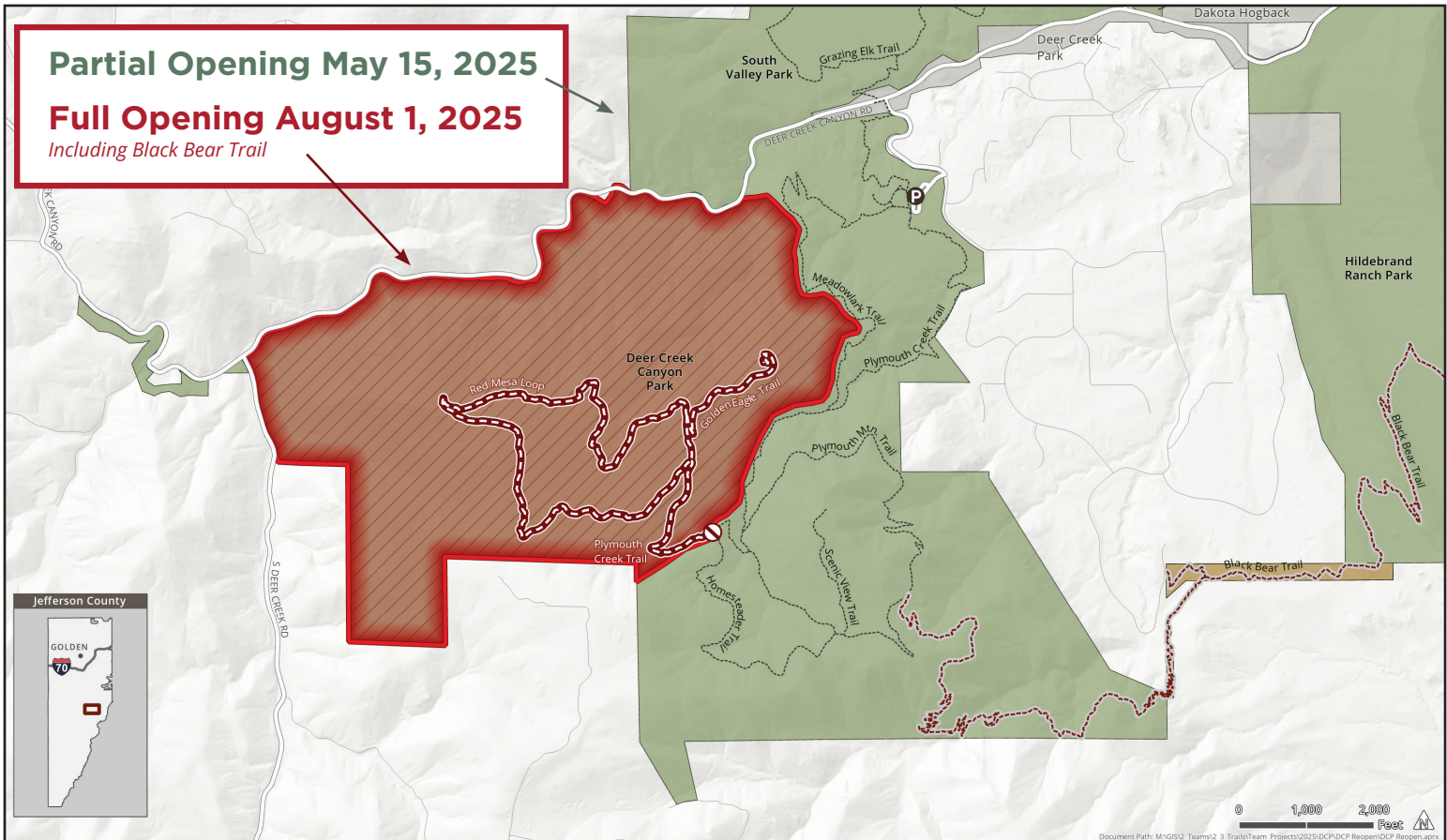
**Partial Opening May 15, 2025**

**Full Opening August 1, 2025**

- **Ongoing** Hazard mitigation and natural resource management
- **Spring 2025-Ongoing** Weed management
- **Fall 2025** Tree planting

## STAY ON TRAIL

Following a wildfire, staying on authorized trails is crucial for both your safety and the recovery of the landscape.

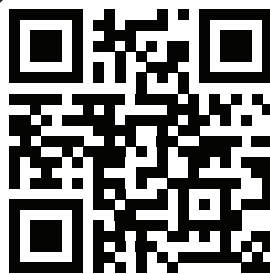


### Deer Creek Canyon Park

Quarry Fire Closure Area

Last Revised 4/17/2025

- Trailhead
- Trail Junction Closure
- Jeffco Open Space Trail
- Closed Trail
- Seasonal Closure
- Closed Area
- Jeffco Open Space
- Trail Easement



Scan for more info about the Quarry Fire

### CONTACT US

[jeffcoparks@jeffco.us](mailto:jeffcoparks@jeffco.us)  
[www.jeffco.us/1208](http://www.jeffco.us/1208)

May 2025