



RE/MAX

RIVER HAVEN, INC

The Construction Consultant You



*Open Seven Days
a Week to Serve You*

www.riverhavenhomes.com • **Wayne R. Walts – Broker**

Sugar Springs Office

1415 W. Sugar River Rd. • Gladwin

989-426-9239

Wixom Lake Office

1239 Estey Rd. • Beaverton, MI 48624

989-435-7755

Main Office

777 W. Cedar • Riverwalk Place

989-426-6893



Mt. Pleasant-Buck's Run Golf Course area-400 acres with over 1.5 miles of Chippewa River frontage. Ideal for development, campground, hunt club, etc. Call today for more info.

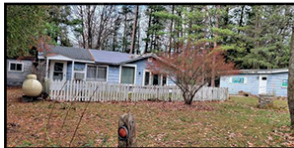
MLS#50088238



Sugar Springs Golf Course-3 bedroom,3 bath ranch with fireplace, finished lower level, 2 car att garage, deck overlooking 4th fairway. Quality thruout.

\$349,900

MLS#50099135



Grass Lake Area-2 bedroom home needs to TLC. Has 2 car garage, double lot.

\$39,700

MLS#50095581