

ATHLETIC MASTERPLAN | DRAFT  
MONTANA STATE UNIVERSITY

EXECUTIVE SUMMARY  
SEPTEMBER 28, 2017



TM



a&e  
ARCHITECTS



# CHAMPIONSHIP QUALITY FACILITIES

## Now is the time

Montana State University Athletics recently completed a strategic plan. Entitled *“Our Heritage, Our Future,”* the strategic plan calls for an Athletics Facility Master Plan that would include a 20-year vision for MSU athletic facilities. Working with MSU leadership, Campus Planning, Design and Construction, Facilities Services, the Department of Intercollegiate Athletics and student-athletes, the Athletics Facility Master Plan outlines aspirations and responds to recommendations and input from stakeholders to best serve our athletes and fans with an eye on comparable facilities at peer institutions.

As we begin the funding and implementation stages of the master plan, we want to share our bold vision for the future of MSU athletic facilities. We invite all Bobcats to join us in making this exciting vision a reality.

*“Our goal is to create centers of excellence that embraces our mission to create champions – both on and off the field.”*

Leon Costello | Director of Athletics

## Common Sense Facilities with a Common Purpose

Our athletic facilities have served us well over the past 60 years. Legacy structures such as the Brick Breeden Fieldhouse and Bobcat Stadium remain viable and provide a strong foundation for future development. The master plan utilizes these facilities to their fullest potential and proposes strategies to renovate, expand and provide deferred maintenance for these key assets. New facilities are also proposed to respond to the growing demand for additional space and to facilitate the renovation of Brick Breeden Fieldhouse.

New facilities include the Bobcat Athletic Complex and the Bobcat Indoor Performance Facility. Located in the north end zone of Bobcat Stadium, the Bobcat Athletic Complex will provide much needed additional space for football and free up critical areas in the Brick Breeden Fieldhouse for academic advising, expanded tutoring opportunities and other multipurpose needs. The new Bobcat Indoor Performance Facility will feature an 8-lane, 300-meter track and a 100-yard turf field that will be used for athletic training and competition and potentially for intramurals and recreational sports. Removing the track and football operations from Brick Breeden sets the stage for future renovations of the seating bowl and fan amenities in the fieldhouse. It also clears the way for more available dates for concerts, conferences, conventions, exhibitions and rodeos without displacing student-athletes.

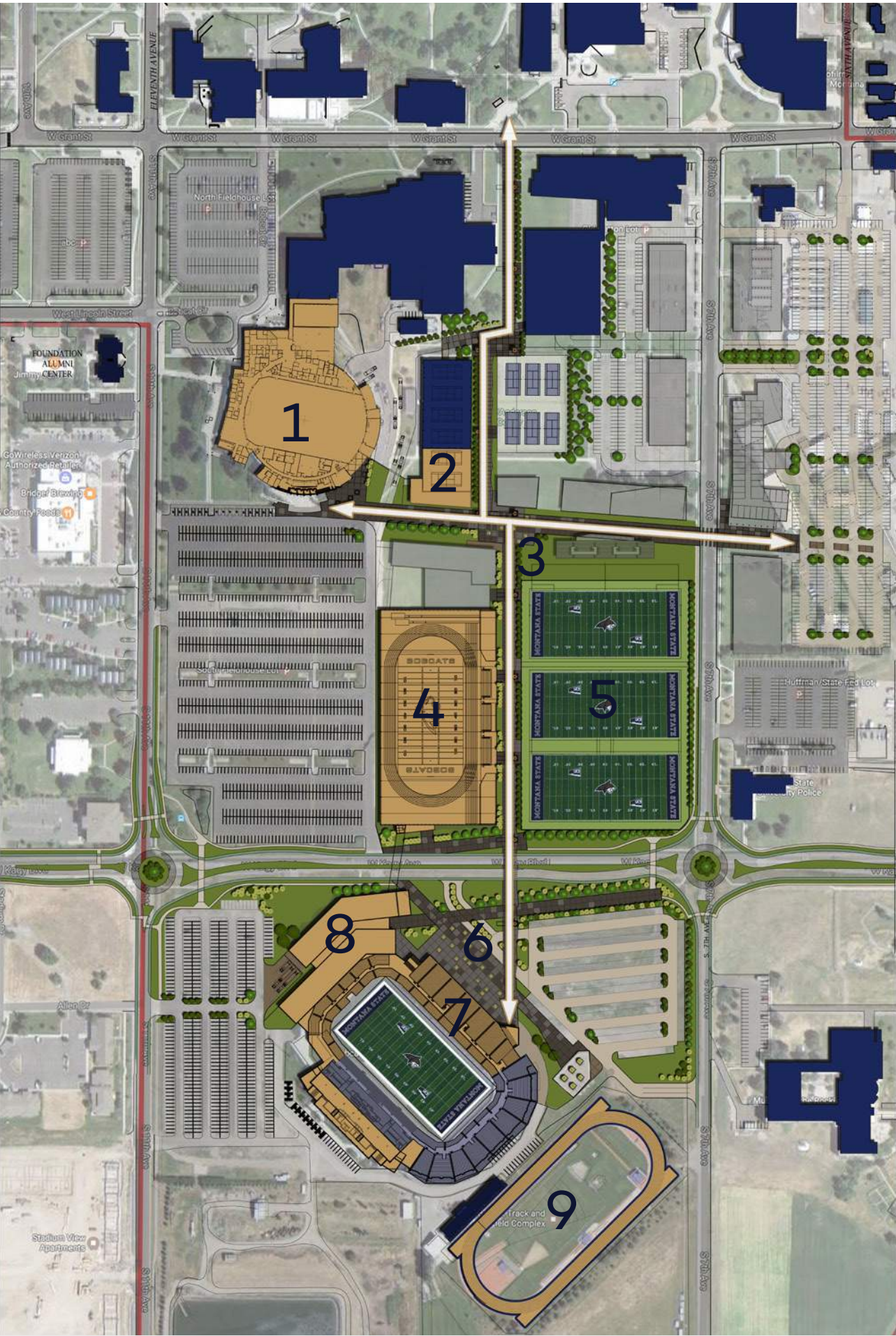
These improvements will have a positive impact on the campus quality of life for all students, student-athletes and faculty. Health and human performance factors for students and student-athletes will also be enhanced as these centers for excellence are developed. Finally, the Bozeman community will also see economic benefits from the renovations and expansion of the Brick Breeden Fieldhouse and Bobcat Stadium.

*“The Athletics Master Plan will transform the Bozeman Campus and set the stage for future investment and development.”*

Waded Cruzado, President | Montana State University

## SITE PLAN LEGEND

- 1. Brick Breeden Fieldhouse
- 2. Bobcat-Anderson Tennis Center and Golf Facility Expansion
- 3. Bobcat Promenade - M to M
- 4. Bobcat Indoor Performance Facility
- 5. Outdoor Practice Fields
- 6. Entry Plaza
- 7. Bobcat Stadium
- 8. Bobcat Athletic Complex
- 9. MSU Track





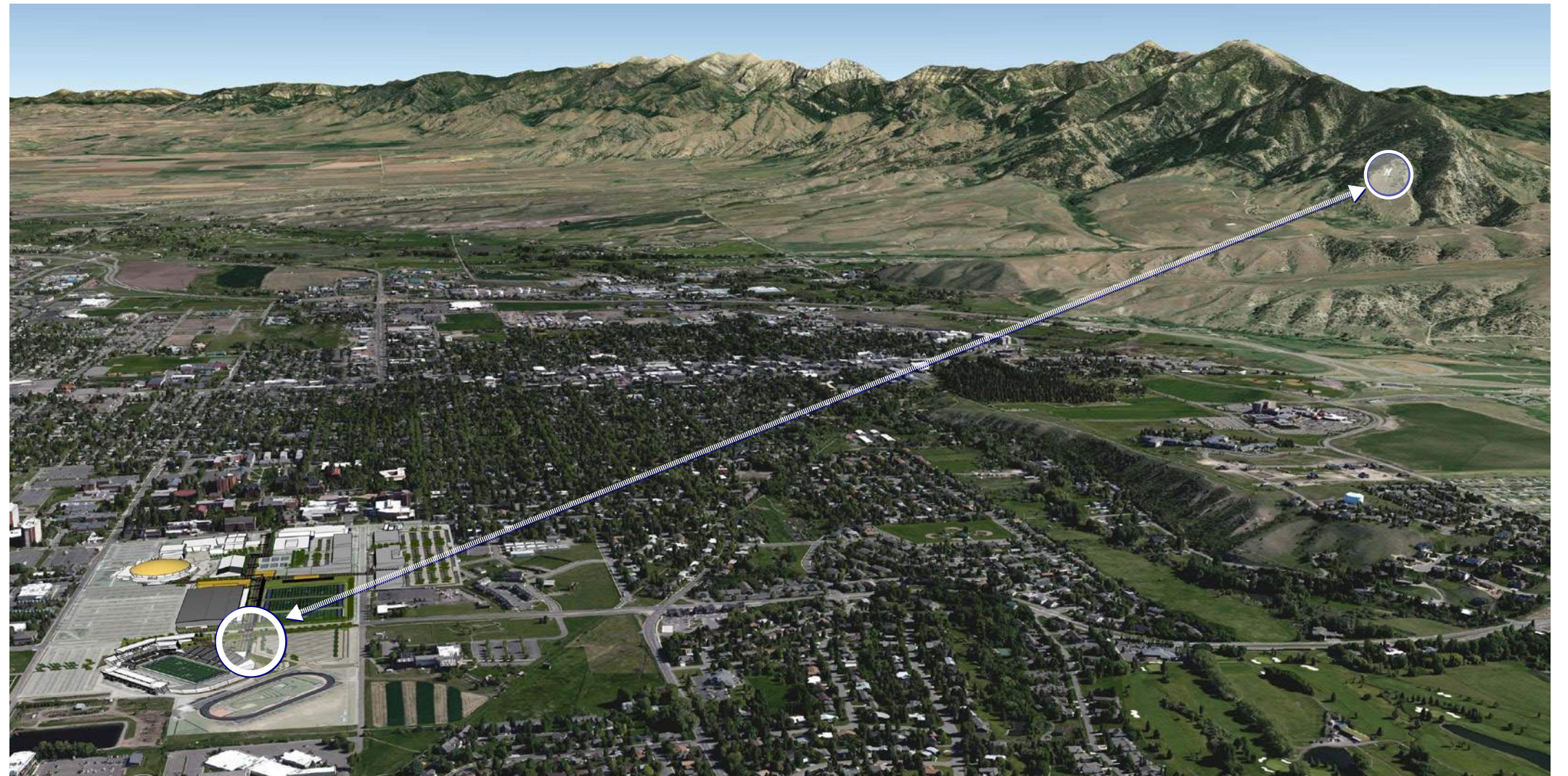
# M TO M CONNECTION

At the mouth of Bridger Canyon is the trademark “M”, created in 1915 by the hands of Montana State University students. This “M” represents not only the spirit of MSU, but also the community of Bozeman. Overlooking the beautiful Gallatin Valley, this significant signature letter embodies the best of our state – The Big Sky of Montana, The Last Best Place on Earth.

The new MSU Athletic Facility Masterplan offers a unique opportunity to expand on the powerful impact the “M” at Bridger Canyon has **gifted the community for decades**. We refer to this opportunity as the “M to M Concept.” Imagine Homecoming night, witnessing the “M” on the Bridgers light up the dark sky, mirrored by a new “M” on the Football Stadium, both **glowing in unison**. The “M to M Concept” captures a special moment for MSU students and the city of Bozeman to experience.

This concept targets one key element: **Connection**. Through a new corridor, the athletics facilities will connect to campus, ultimately connecting the campus back to Bozeman and the Gallatin Valley. This corridor also creates opportunities for connectivity between students, recruits, faculty, and alumni, guiding them back to the university.

Universities assume the profound responsibility of connecting the past to the present, and most importantly, to the future. The new “M” at the Football Stadium honors the trademark “M” at Bridger Canyon, created over a century ago. This concept blends old traditions with new, connecting **what has been** with **what will be**.





# OPEN SPACE OPPORTUNITIES

**Connections create a ‘Sense of Place’ that is unique to Montana State**

At the heart of the master plan are a series of physical and visual connections that link the north end of campus to Bobcat Stadium. Taking the form of walkways and open space, these connections create a framework for the placement of new buildings, outdoor fields and future development.

**Bobcat Promenade**

A new north/south promenade will serve as the primary connection linking the north campus, Brick Breeden Fieldhouse, the new Norm Asbjornson Hall and parking facilities to the Bobcat Indoor Performance Facility and Bobcat Stadium. Visual connections along this promenade and to Bobcat Stadium will also be enhanced by the placement of the Bobcat Indoor Performance Facility and outdoor fields. The promenade will culminate at a proposed tower at Bobcat Stadium. The proposed Bobcat Promenade will set the stage for new game day traditions and become a signature element in the campus landscape.

In addition to the Bobcat Promenade, a new east/west corridor will serve as a secondary connection that links Brick Breeden Fieldhouse and existing parking facilities to athletic fields to the east. This connection will also provide links to potential future development along 7th Avenue as identified in the University Master Plan. Potential future developments could include:

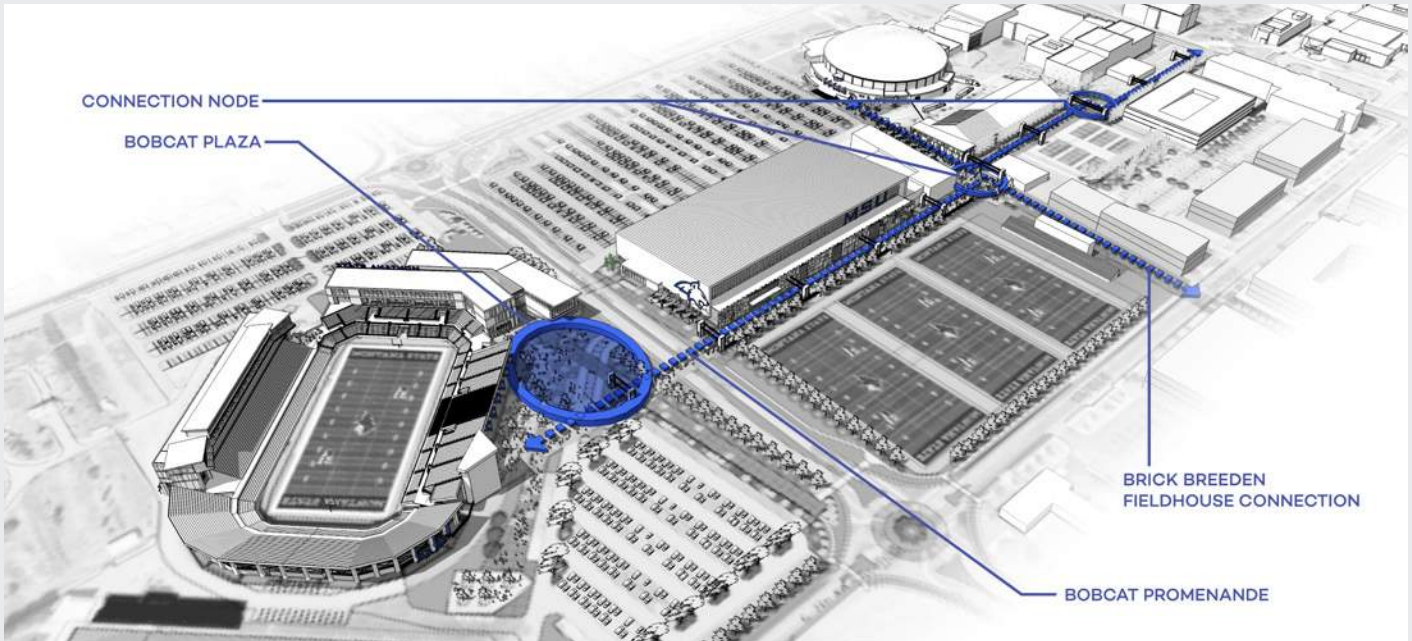
- additional intramural/recreation and competition fields
- expansion of outdoor sports/team facilities
- further expansion of academic advising facilities for students
- additional classrooms
- office space
- residential dwellings
- additional parking



The massing and scale of new buildings have been developed in a manner that complements the overall scale of adjacent structures and works within the context of the university. Structures are positioned to accommodate future expansion of the buildings themselves, including transportation infrastructure. Regional connections between Bobcat Stadium and the Bridger Mountain range are also proposed through an interplay between the proposed tower at Bobcat Stadium and the landmark ‘M’ at the mouth of Bridger Canyon.

*“The master plan fully leverages existing facilities and proposes new facilities only as necessary to complete at the highest levels in Division 1 athletics”*

Dusty Eaton | A&E Architects





# BOBCAT ATHLETIC COMPLEX

The Bobcat Athletic Complex is designed to meet the needs identified by users and stakeholders and encompasses current trends in Division I athletics and at peer institutions.

## **Objectives**

Create a state of the art facility at a level necessary for the Bobcat football team to better recruit and compete for Big Sky Conference and national championships.

Free up space in the Brick Breeden Fieldhouse to set the stage for future renovations to the seating bowl, fan amenities and improved student-athlete academic success, training, and performance areas.

## **Location**

This new home for the football team will be in the north end zone of Bobcat Stadium.

Benefits include:

- proximity to the training facilities
- provides sense of enclosure to the stadium, enhances intimacy and increases home-field advantage
- creates a front door and face to the football stadium on Kagy Boulevard and 11th Avenue.

## **Facility details and amenities**

This facility will contain a new locker room for day-to-day use and game-day use.

It will provide all necessary health, safety and training areas for the football team and all student-athletes, including:

- new weight room
- nutrition refueling station
- training and rehab and recovery rooms.

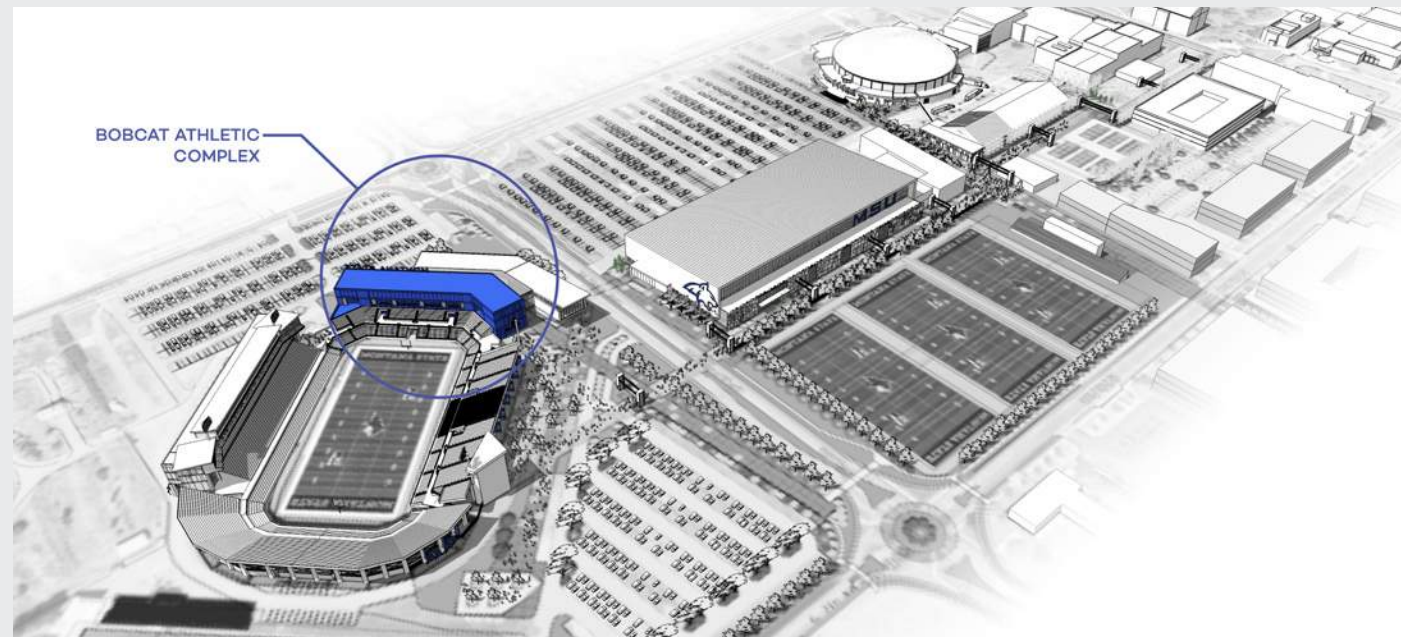
It will be a showcase for recruiting, highlighting the history of MSU football and giving recruits a glimpse of what life as a Bobcat can be. It will provide the necessary spaces and tools for coaches including team rooms, coaches' offices, conference rooms and video analysis.



Future additions could include the addition of multi-use spaces intended not just for the football team, but for all athletic teams or the entire university and the Bozeman community—a multi-use super suite overlooking Bobcat stadium and an auditorium for up to 120 attendees.

## **Key Functional Areas Include:**

- Coaches Offices and Conference Rooms
- All Staff Room
- Position Meeting Rooms
- Locker Room and Team Lounge
- Staff and Coaches Locker Rooms
- Training and Rehab areas, including Recovery rooms and Hydrotherapy
- Strength Training Room (weights, cardiovascular, yoga and crossfit)
- Nutrition Room / Fueling Station
- Future Auditorium (potentially in separate location)
- Future Super Suite (overlooking the Stadium football field)





# ACADEMIC EXCELLENCE CENTER

The Academic Excellence Center is the gathering place for all of Montana State’s student-athletes.

**Objectives**

Create important connections and provide critical services for the entire community of student- athletes with enhanced tutoring, studying, community building and recruiting.

**Location**

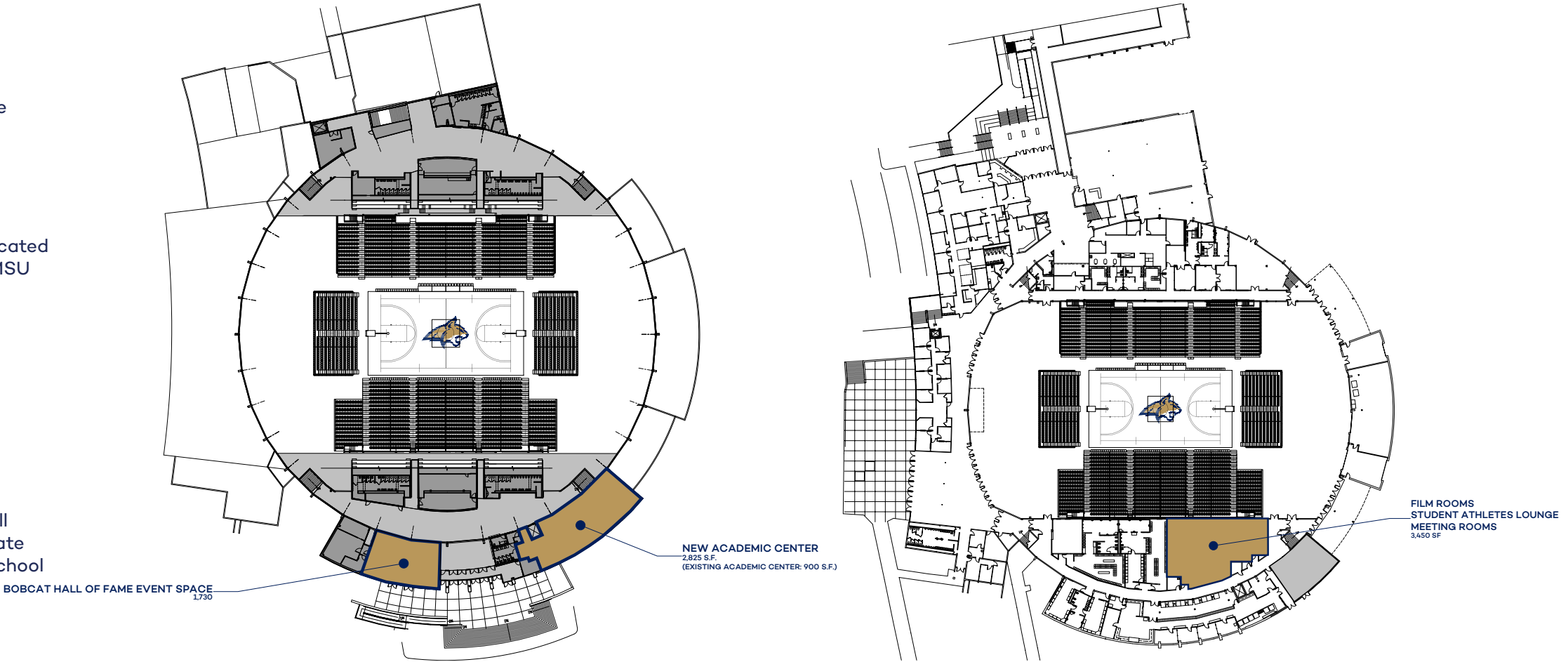
With the relocation of the football team to the Bobcat Athletic Complex, the Academic Excellence Center will expand into the vacated space in the fieldhouse and expand significantly to better serve MSU student-athletes.

**Facility details and amenities**

The following necessary spaces will be provided:

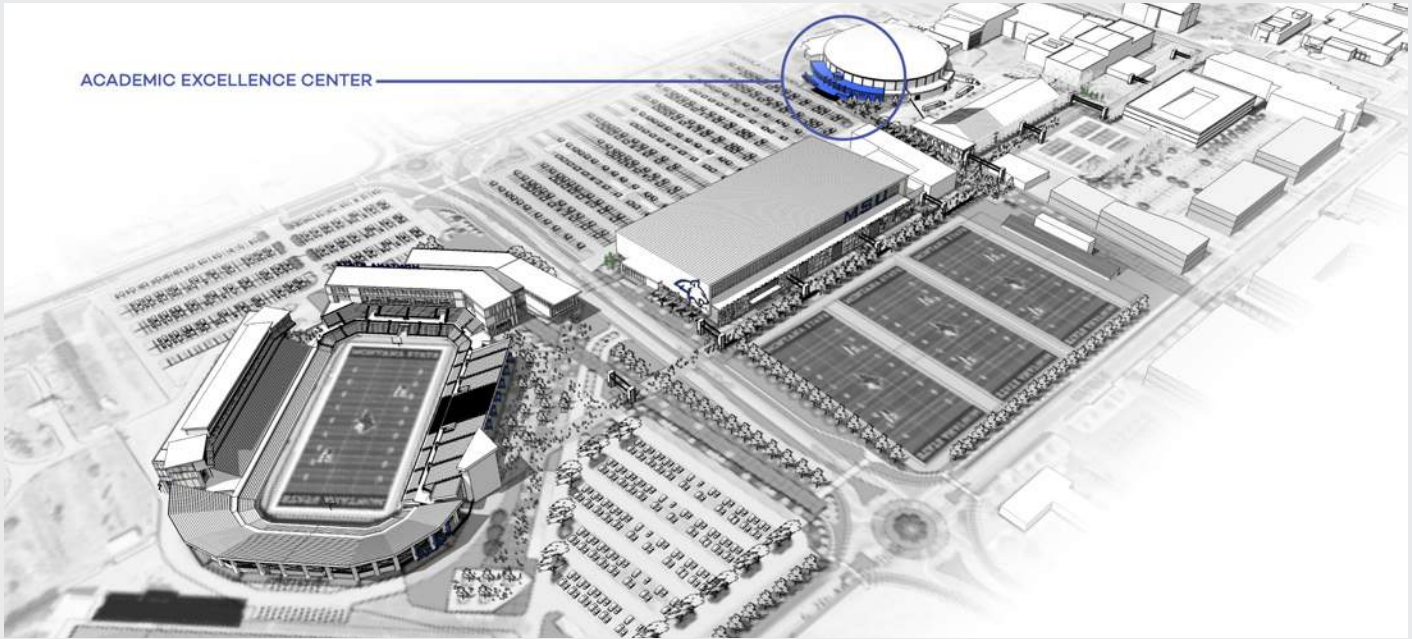
- space for individual tutoring
- individual study space
- group study rooms
- storage for books
- computer stations

The new Academic Excellence Center will be visible and open to all student-athletes. The improvements will help to optimize and create efficiency for the student-athlete’s every day rigor of balancing school and athletics.



## Key Functional Areas Include:

- Computer stations
- Private tutoring rooms
- Group/individual study space
- Offices for staff
- Future phase: Auditorium (potentially in separate location)
- Student athlete lounge (film rooms, meeting rooms)
- Ogle Hall of Fame event space





# BOBCAT INDOOR PERFORMANCE FACILITY

The Bobcat Indoor Performance Facility will accommodate competition for Bobcat Track and Field, year-round training for all outdoor sports, and will impact all student-athletes during their time at MSU.

### Objectives

The facility will expand the training season for several sports and will provide needed relief for the Brick Breeden Fieldhouse. Creating an Indoor Performance Facility will minimize wear and tear on the track itself due to heavy use of other operations and the movement of bleachers currently in the Fieldhouse that will not occur in the new facility. The new Bobcat Indoor Performance Facility will allow for more flexibility within valuable areas of the Fieldhouse.

### Location

The proposed Bobcat Indoor Performance Center is an estimated 150,000 to 160,000 square feet facility to be located on the east side of the existing parking lot south of Brick Breeden Fieldhouse.

### Facility details and amenities

The indoor performance facility will include a 300-meter track for indoor training and NCAA competition, a 100-yard synthetic field for training of all field sports—enough space to accommodate a variety of competitions across a number of sports.

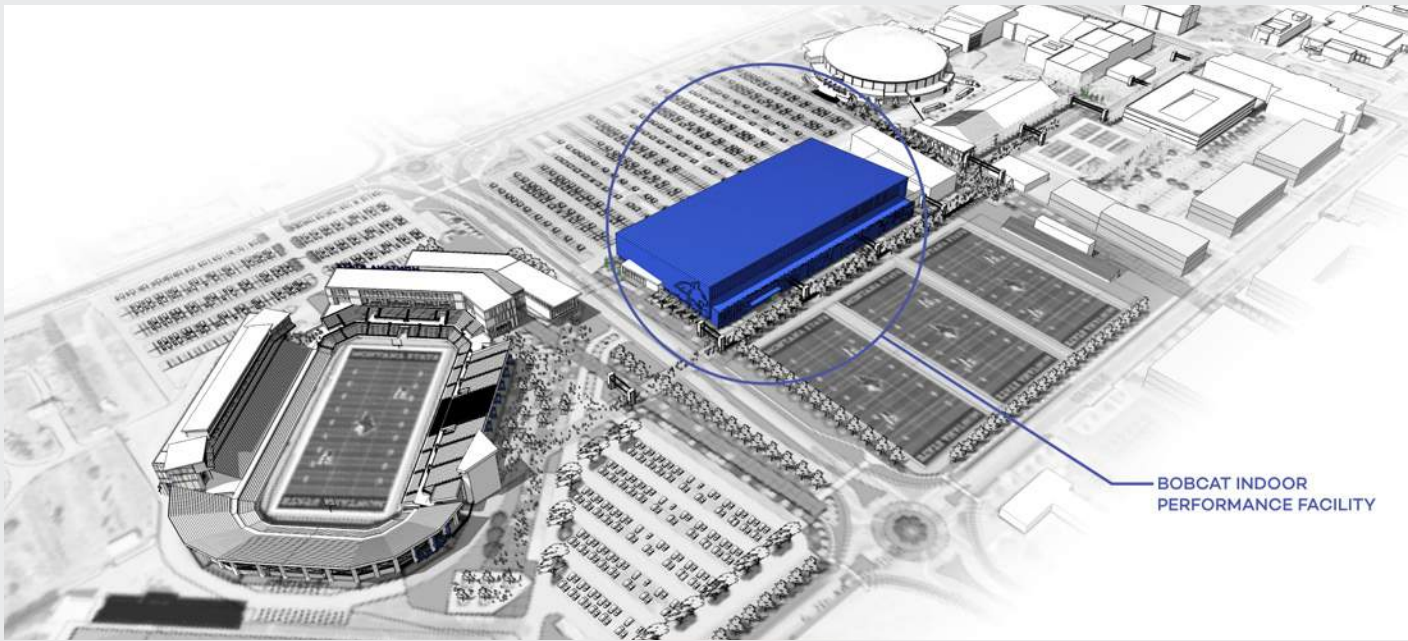
Additional areas outside of the track will provide for specialized training needs for football, track and field and other sports.

The Bobcat Indoor Performance Facility will also include seating for up to 1,000 spectators as well as locker rooms, concessions, restrooms and amenities to support events.



## Key Functional Areas Include:

- 100-yard turf field
- 45'-0" clear below structure at perimeter, 65'-0" clear at center
- 300-meter track, 8 lanes with 8 lane straight-a-way
- Field Events areas inside and outside track
- Press Box and Camera Positions
- Seating for up to 1,000 spectators





# BOBCAT-ANDERSON TENNIS CENTER AND GOLF FACILITY ADDITION

The existing Bobcat-Anderson Tennis Center will be expanded as necessary for the future of both tennis and golf programs. The expansion will be designed to align with the new Athletics Facility Master Plan. A new lobby will be added serving both Tennis and Golf, as well as the retail function of both, allowing the public to use the courts and new amenities.

The Golf Facility will house four new hitting simulators, two instructional simulators, a putting green and pitching area. Golf team specific areas will include a classroom, coach's offices, and team locker rooms for men and women.

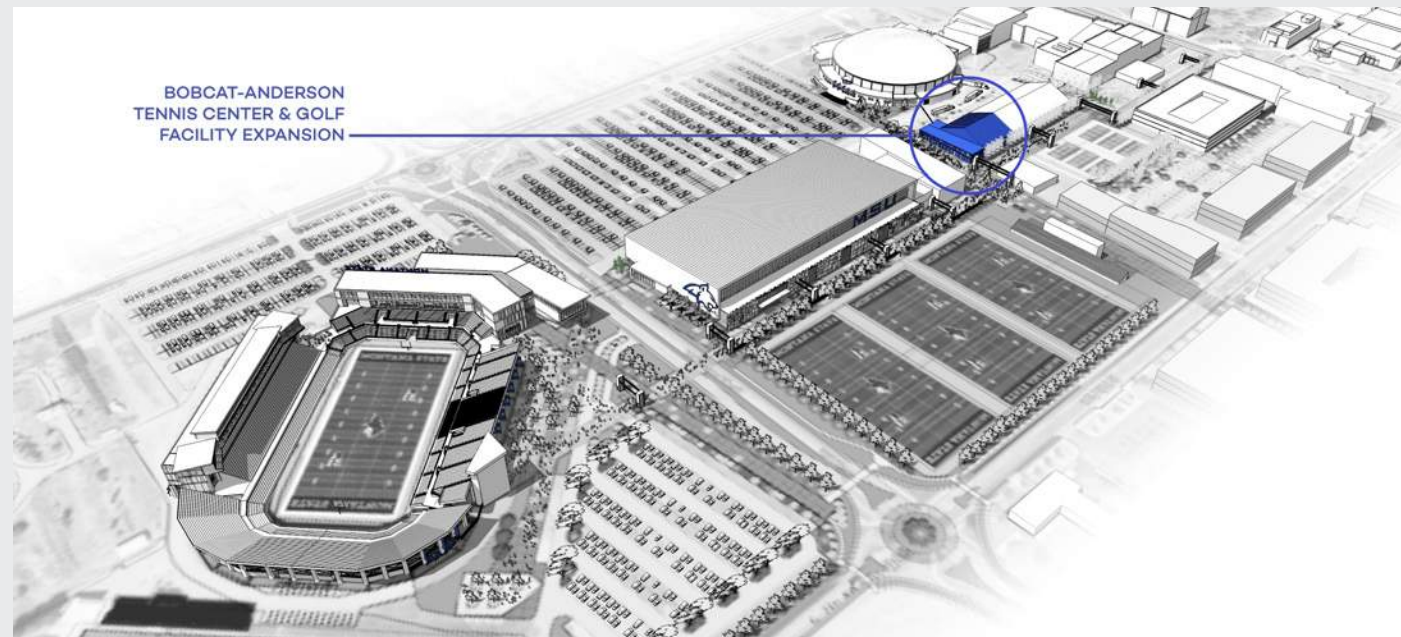
The Bobcat-Anderson Tennis Center will add two additional indoor tennis courts and renovate the four existing tennis courts. The courts will be aligned adjacent to each other to allow for viewing of all courts simultaneously. Tennis team specific areas will include team meeting areas, coach's offices, and team locker rooms for men and women. The outdoor courts will be reduced to 6 (from 8) to coordinate and enhance the University Facility Masterplan pathway. The two removed courts could be added back in the future as necessary.

To better serve the general public and members, public restrooms, concessions and public locker rooms will also be included.



## Key Functional Areas Include:

- Golf – 4 hitting simulators, 2 instructional simulators, putting green, pitching area
- Golf – coaches' offices, meeting rooms, classroom
- Golf – team room and locker rooms
- Tennis – 2 new indoor courts, 4 renovated indoor courts, 6 renovated outdoor courts
- Tennis – coaches' offices, meeting rooms, classroom
- Tennis – team room and locker room
- Public – new lobby and public/member amenity spaces





# FOOTBALL STADIUM - EAST SIDELINE

The East Sideline of the Stadium needs to be renovated to a level comparable to that of the recently completed South End Zone. The goal of the project is to create a better viewing experience from the East and to increase revenue opportunities through seating options and improved amenities.

Approximately 6,400 seats are envisioned, including general seating and accessible seating with an additional premium seating options. The concourses will contain improved restroom facilities, new concession opportunities, retail spaces and access to a premium lounge.

It is critical that the design of the East Sideline be consistent and well-integrated with the design of the South End Zone, the North End Zone and the West Sidelines to create a cohesive single bowl stadium. Additionally, the design will take into consideration the natural beauty and views of the surrounding mountains that create such a unique game day experience at Montana State University.



## Key Functional Areas Include:

- New Stadium Entry
- 6,400 seats (general and accessible)
- Premium Seating Options
- Club-style seats
- New concourse, restrooms, concessions and retail amenities
- Premium lounge (1,500 sq./ft.)





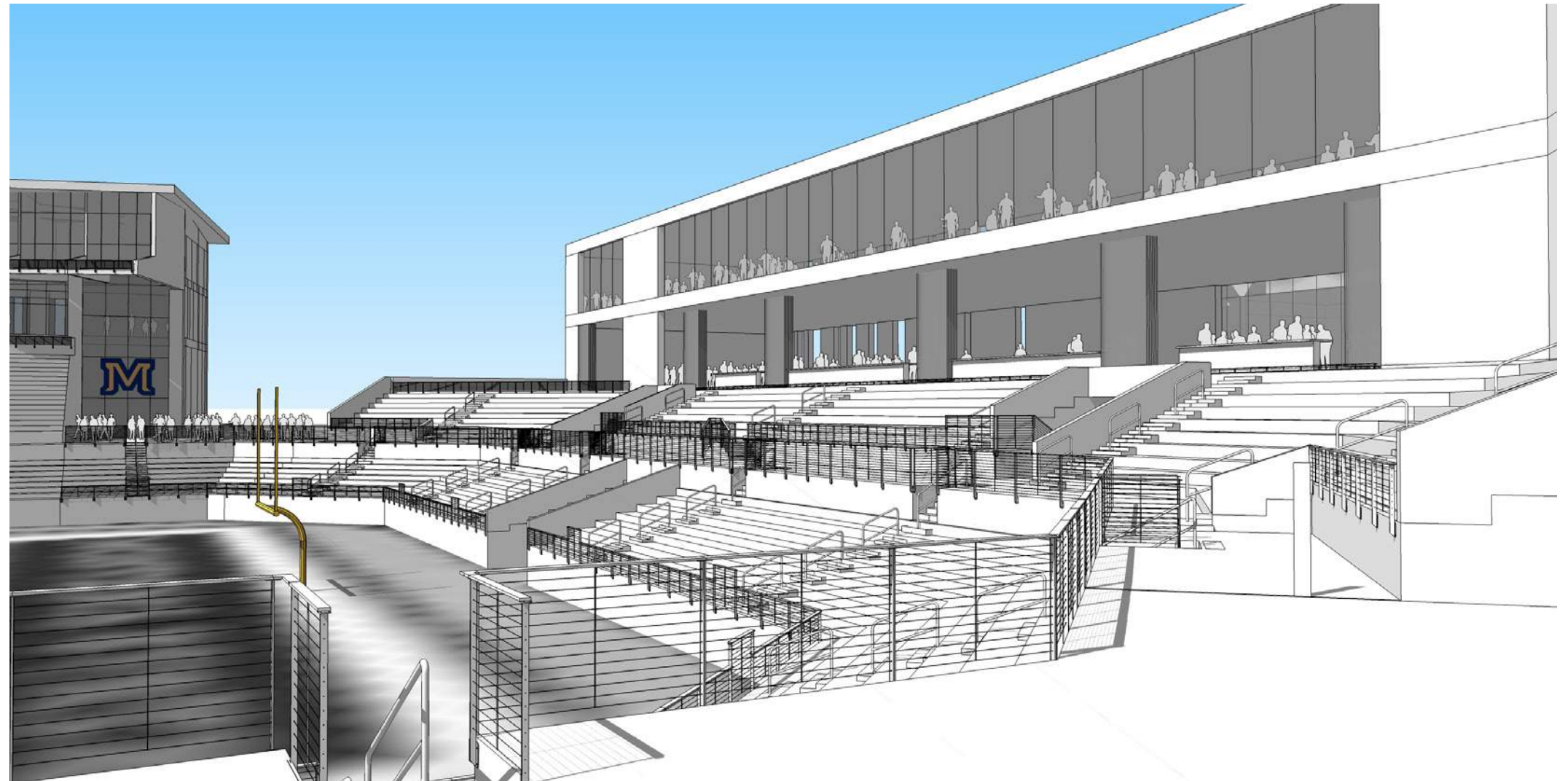
# FOOTBALL STADIUM - NORTH ENDZONE

The North End Zone will be designed to integrate with and enhance the Bobcat Athletic Complex. It will serve to complete the bowl by connecting the East and West Sidelines.

It is envisioned to provide 2,000 additional seats (general seating and accessible seating) while also providing space below for other program elements: concourse, restrooms and concessions. A new scoreboard, videoboard and stadium sound system would be included as part of this project, or as a stand-alone project, coordinating with the North End Zone seating and the Bobcat Athletic Complex.

In the future, a phased project to the Bobcat Athletic Complex will enable the creation of a super-suite amenity in the North End Zone.

Similar to the East Sideline, the stadium design must be thoughtfully designed into a cohesive stadium concept.



## Key Functional Areas Include:

- 2,000 seats (general and accessible)
- New concourse, restrooms, concession and retail amenities
- New scoreboard/video board and stadium sound
- Future connection to super suite



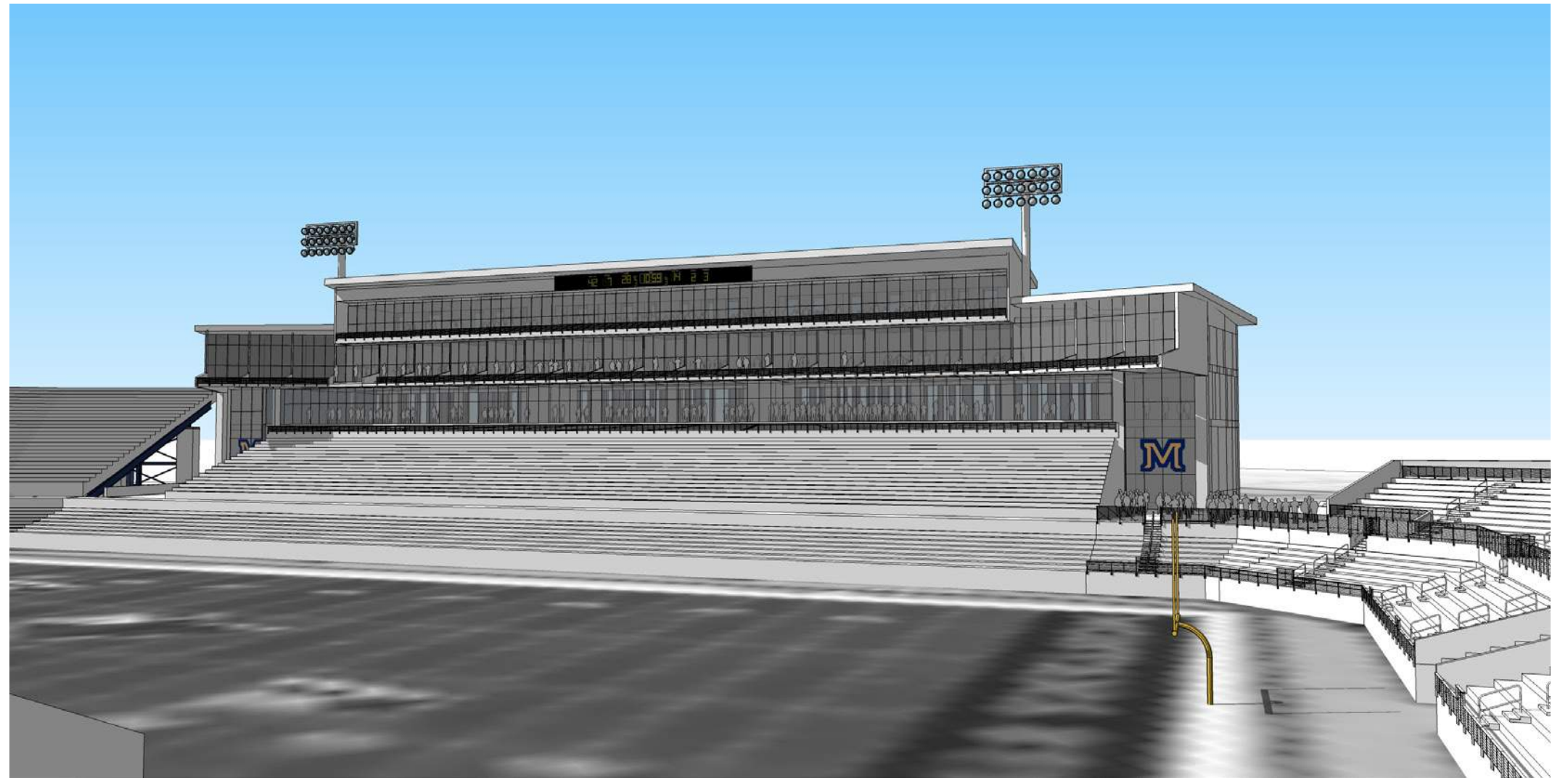


# FOOTBALL STADIUM - WEST SIDELINE | PRESS BOX TOWER RENOVATION

The existing west sideline and tower is proposed to be completely renovated to improve fan amenities and the spectator experience. Minor renovations to the seating bowl are envisioned including improved access to the renovated tower.

The renovations to the tower will include upgrading the concourse, concessions, restrooms, retail points and stadium entry points; improving the second-level corporate hospitality area, the third level Stadium Club and Sky Suites, the fourth-floor Sky Suites and completely renovating the fifth-level press box, media, and coaches' spaces.

The entire west tower façade itself will be redesigned to create the centerpiece for the new completed stadium bowl.



## Key Functional Areas Include

- Renovate concourse, restrooms, concessions and retail amenities
- Renovate corporate suite – Level 2
- Renovate stadium club and sky suites – Level 3
- Renovate sky suites – Level 4
- Renovate press box, media and coaches' spaces – Level 5
- Create a new west tower facade





# BRICK BREEDEN FIELDHOUSE

Following the football team’s move to the new Bobcat Athletic Complex and the track team’s move to the Bobcat Indoor Performance Facility, the future of Brick Breeden becomes very bright, as it will now have enough space to properly function at a level necessary for Bobcat athletics to compete with our peers.

Initial renovations will include: new film rooms, meeting rooms and student-athlete lounge spaces; a new Ogle Hall of Fame Event Space; and improved usability for the strength and cardio training rooms for all sports.

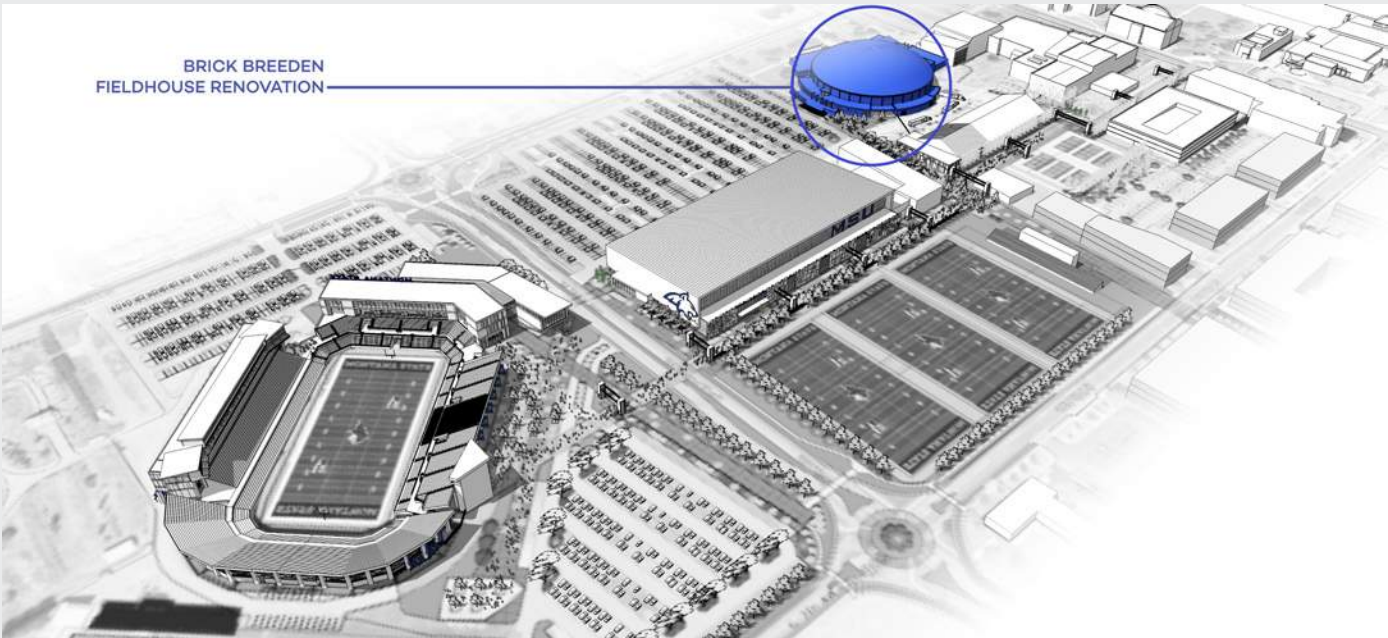
Future renovation to Brick Breeden will include improvements for all existing sports.

The men’s and women’s ski teams, track and field team and cross-country team will all benefit from new locker room space, coaches’ offices and team lounges/meeting rooms. The rodeo team will also gain a team suite. The men’s and women’s basketball teams and the volleyball team will have new locker room spaces, coach’s offices, video rooms, meeting rooms and team suites.

The current Ogle Hall of Fame will be expanded and become a major focal point of the facility, showcasing Bobcat history and pride in the new venue and throughout Brick Breeden. The training facilities will be doubled in size to provide proper health and nutrition, training and care for all student-athletes. Green Rooms and appropriately sized staging areas for public concerts will be created as well as locker rooms for visiting teams. These new and renovated spaces will be located and organized in the most efficient way possible for staging and preparing for events.

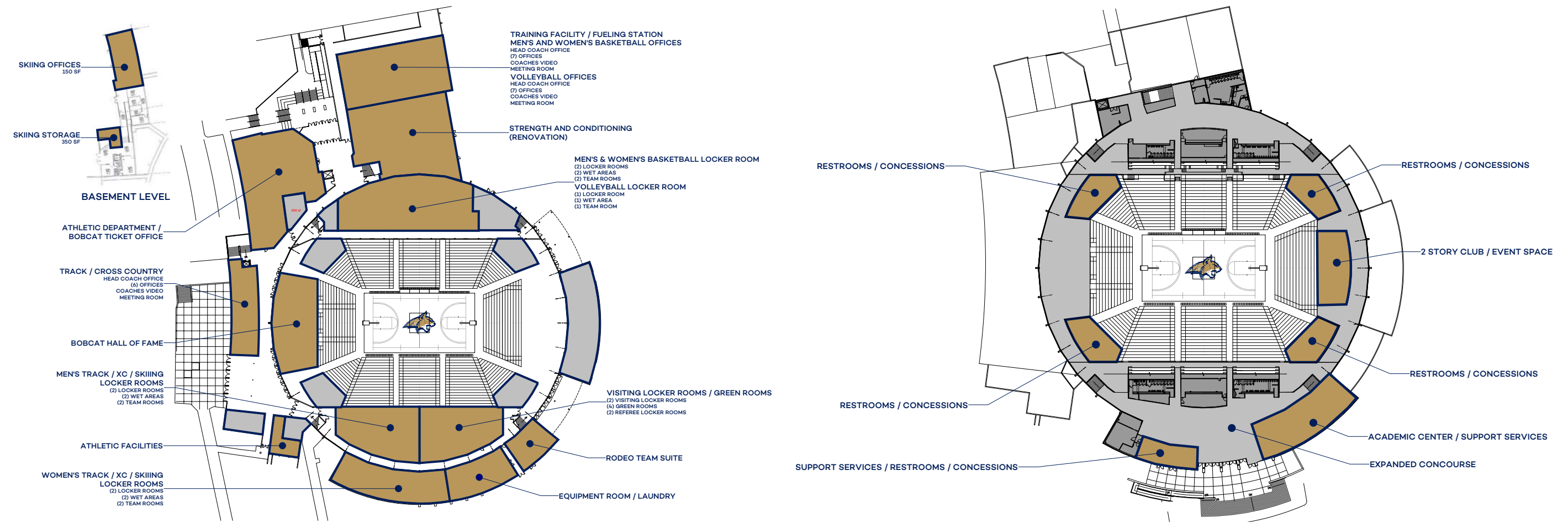


Along with the new team related spaces, the entire arena of Brick Breeden will be transformed to create a new and exciting experience. Permanent seating will be added, along with the moveable seating to create proper seating configurations for arena sports, concerts and exhibitions. Varied seating types, loge boxes and suites will be added, creating a variety of distinctive viewing experiences, price points and revenue generating opportunities. A new video board and upgraded sound system will provide an enhanced arena experience. Improved concourses, concessions, restroom facilities and retail opportunities will be created with new entries and other additional amenities.





# BRICK BREEDEN FIELDHOUSE



## Key Functional Areas (Future Renovation) Include:

- Team Suites, meeting rooms, locker rooms, coach's offices for the following:
  - Men's & Women's Track & Field
  - Men's & Women's Cross Country
  - Men's & Women's Skiing
  - Men's & Women's Basketball
  - Volleyball
  - Rodeo
- Ogle Hall of Fame
- Renovated Admin and Ticket Offices
- Visiting Team Rooms / Green Rooms and Staging
- Expanded Weight Room, Training Room, Conditioning and Nutrition
- New Arena Bowl
  - General and accessible seating, loge seating, suites
  - Premium Club space / event space
  - Concourse, restrooms, concessions, retail opportunities
  - Center-hung Video Board / Sound system







d&e  
ARCHITECTS