

## SUNDAY OPEN HOUSES



**794 Naya Nuki Drive, Bozeman**  
**\$2,995,000 | #409378 | OPEN SUNDAY 3-5 PM**

4 bd, 4.5 ba • New construction • 360° views

📍 Springhill Rd, R on Naya Nuki, house on the right



**Lucy Sosa**  
**406.536.0673**



**4100 Pash Lane, Bozeman**  
**\$1,775,000 | #412406 | OPEN SUNDAY 1:30-3:30 PM**

3 bd, 2.5 ba • Protected views • Remodeled main floor

📍 S on Cottonwood, R on Pasha, just past Anderson School



**Tebarek Hill**  
**406.209.5354**



**2014 Commonwealth Street, Bozeman**  
**\$1,199,000 | #412354 | OPEN SUNDAY 12-2 PM**

5 bd, 3 ba • Vaulted ceilings • Bridger views

📍 S. 19th, W on Southbridge, R on S. 20th, corner of S. 20th & Commonwealth



**Lucy Sosa**  
**406.536.0673**



**3144 Sourdough Road, Bozeman**  
**\$1,195,000 | #412520 | OPEN SUNDAY 12-2 PM**

3 bd, 2 ba • 1.167 acres • ADU

📍 Kagy, S on Sourdough, home is on the left



**Jean White**  
**406.539.3914**



**79 Stafford Avenue, Bozeman**  
**\$980,000 | #412390 | OPEN SUNDAY 2-4 PM**

3 bd, 2.5 ba • Move-in ready home • Fully furnished ADU

📍 Ferguson, W on Babcock, N on Stafford, home is on the left



**Aaron Cox**  
**406.580.4231**



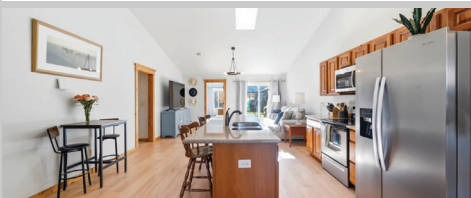
**168 E. Hyalite Peak Drive, Bozeman**  
**\$760,000 | #411717 | OPEN SUNDAY 11 AM-1 PM**

3 bd, 2 ba • Bonus room • Quiet cul-de-sac

📍 Huffine, S on Willow Peak Dr, E on Hyalite Peak Drive



**Tebarek Hill**  
**406.209.5354**



**145 Talon, Unit B, Bozeman**  
**\$415,000 | #410754 | OPEN SUNDAY 11 AM-1 PM**

2 bd, 2 ba • Vaulted ceilings • Bright and open

📍 Gooch Hill Rd to Talon Way



**Megan Dissly**  
**406.599.9394**



**1124 Longbow, #1, Bozeman**  
**\$405,000 | #412186 | OPEN SUNDAY 1-3 PM**

3 bd, 2 ba • Ground level unit • Garage! Single level

📍 Laurel Parkway, then W on Saxon Way to building 1124



**Kelley Halle**  
**406.581.3144**



**2238 Baxter, Unit #12, Bozeman**  
**\$329,000 | #410346 | OPEN SUNDAY 12-2 PM**

2 bd, 2 ba • Great location • \$5,000 Seller Credit

📍 N on 19th, W on Baxter, S at Baxter Springs Condos



**Camry Varble**  
**406.600.6014**