

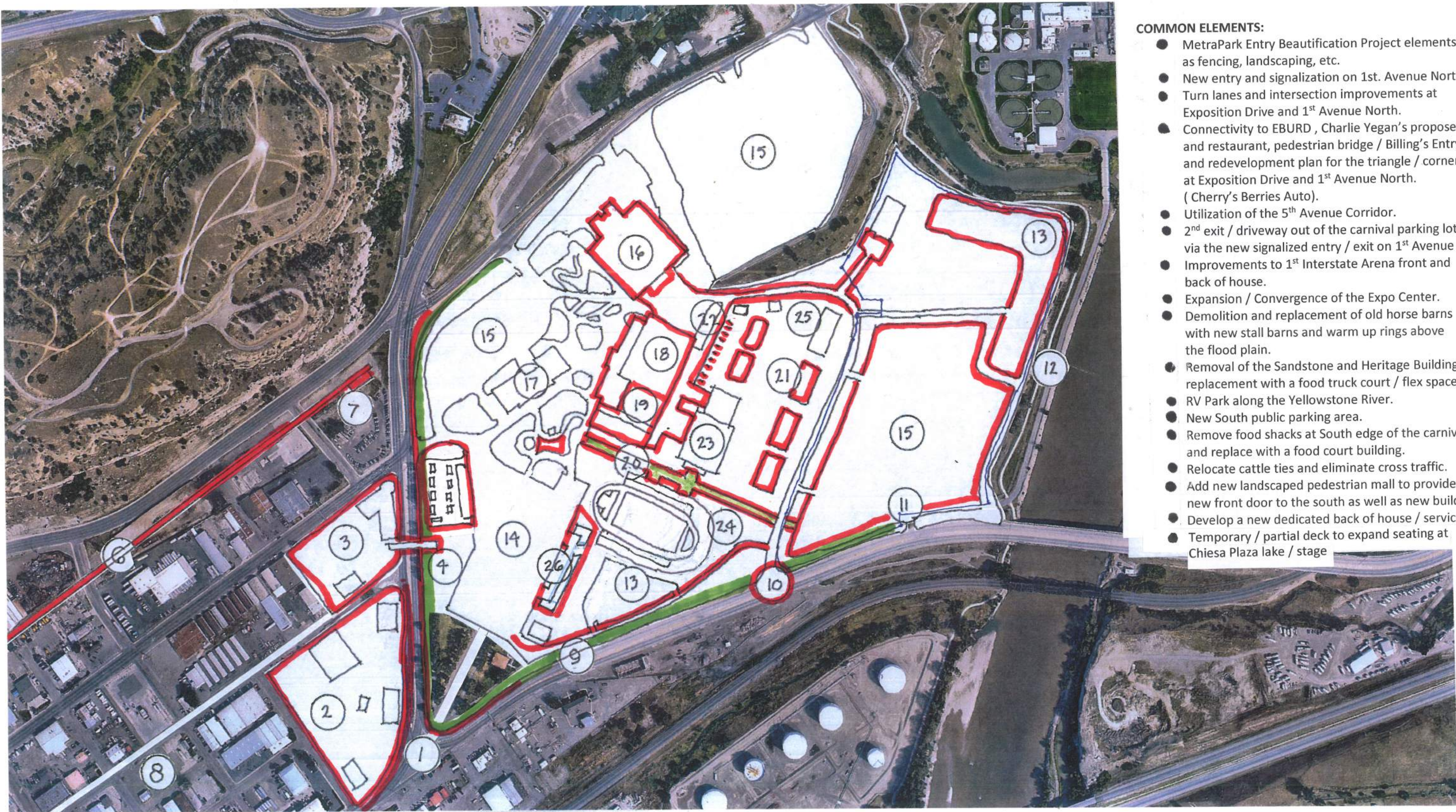


# DRAFT MASTERPLAN OPTIONS METRAPARK

MAY 23, 2020

CHARLES D. SMITH ARCHITECTURE & PLANNING, LLC





#### COMMON ELEMENTS:

- MetraPark Entry Beautification Project elements such as fencing, landscaping, etc.
- New entry and signalization on 1st. Avenue North.
- Turn lanes and intersection improvements at Exposition Drive and 1<sup>st</sup> Avenue North.
- Connectivity to EBURD , Charlie Yegan's proposed hotel and restaurant, pedestrian bridge / Billing's Entryway, and redevelopment plan for the triangle / corner lot at Exposition Drive and 1<sup>st</sup> Avenue North. ( Cherry's Berries Auto).
- Utilization of the 5<sup>th</sup> Avenue Corridor.
- 2<sup>nd</sup> exit / driveway out of the carnival parking lot via the new signalized entry / exit on 1<sup>st</sup> Avenue North.
- Improvements to 1<sup>st</sup> Interstate Arena front and back of house.
- Expansion / Convergence of the Expo Center.
- Demolition and replacement of old horse barns with new stall barns and warm up rings above the flood plain.
- Removal of the Sandstone and Heritage Buildings and replacement with a food truck court / flex space.
- RV Park along the Yellowstone River.
- New South public parking area.
- Remove food shacks at South edge of the carnival lot and replace with a food court building.
- Relocate cattle ties and eliminate cross traffic.
- Add new landscaped pedestrian mall to provide a new front door to the south as well as new buildings.
- Develop a new dedicated back of house / service area.
- Temporary / partial deck to expand seating at Chiesa Plaza lake / stage

## COMMON MASTERPLAN ELEMENTS

MAY 23, 2020

# METRAPARK

CHARLES D. SMITH ARCHITECTURE & PLANNING, LLC



### OPTION "A"

1. MULTI-PURPOSE ARENA
  - A. Not solely Equestrian.
  - B. Include ice making capability.
  - C. Accommodate smaller shows currently held in First Interstate Arena.
  - D. Ice Hockey and public skating.
  - E. Front door located on new pedestrian mall.
  - F. Nearby parking.
  - G. Separate "back door"
  - H. A popular community use facility.
2. AMPITHEATER
  - A. Dedicated to entertainment events.
  - B. Similar to the Kettlehouse facility in Missoula.
  - C. Connects to new pedestrian mall.
  - D. Parking nearby.
  - E. Satisfies a "pent up" entertainment demand.

## Legend

1. Expo & 1st Intersection Improvements
2. Proposed Mixed Use Development
3. Proposed Hotel & Restaurant
4. Pedestrian Bridge / Billings Entryway
5. Food Truck Court / Flex Space
6. 5th Avenue Corridor / Transit Line
7. Transit Station
8. East Billings Urban Redevelopment District
9. MetraPark Entryway Beautification Project
10. Signalized Entry / Exit
11. Gate 1 - RV Park
12. Dutcher Trail System
13. RV Park
14. Improved Carnival / Parking Lot
15. North Parking Lot
16. 1st Interstate Arena Improvements
17. Montana Pavillion
18. Expo Center
19. Expo Center Expansion
20. Pedestrian Mall
21. New Horse Barns
22. Cattle Ties
23. Proposed Arena
24. Amphitheater
25. Superbarn
26. Food Court



## MASTERPLAN - OPTION "A"

EXPO HALL EXPANSION / ENCLOSED ARENA / AMPITHEATER

MAY 23, 2020

# METRAPARK

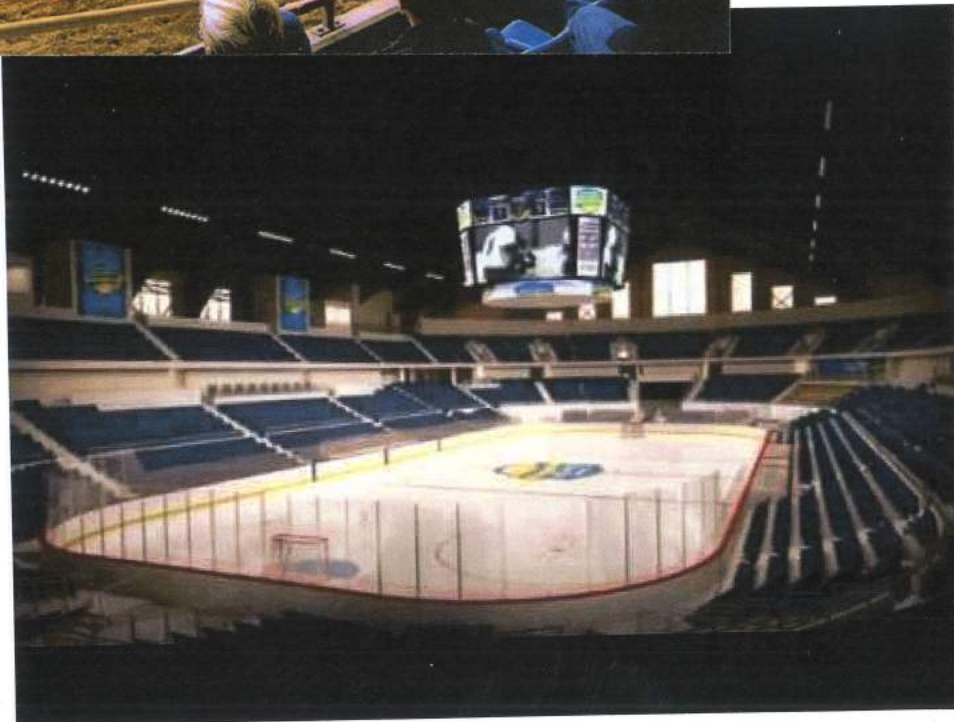
CHARLES D. SMITH ARCHITECTURE & PLANNING, LLC

- |   |                     |
|---|---------------------|
|  | EXISTING FACILITIES |
|  | PROPOSED FACILITIES |

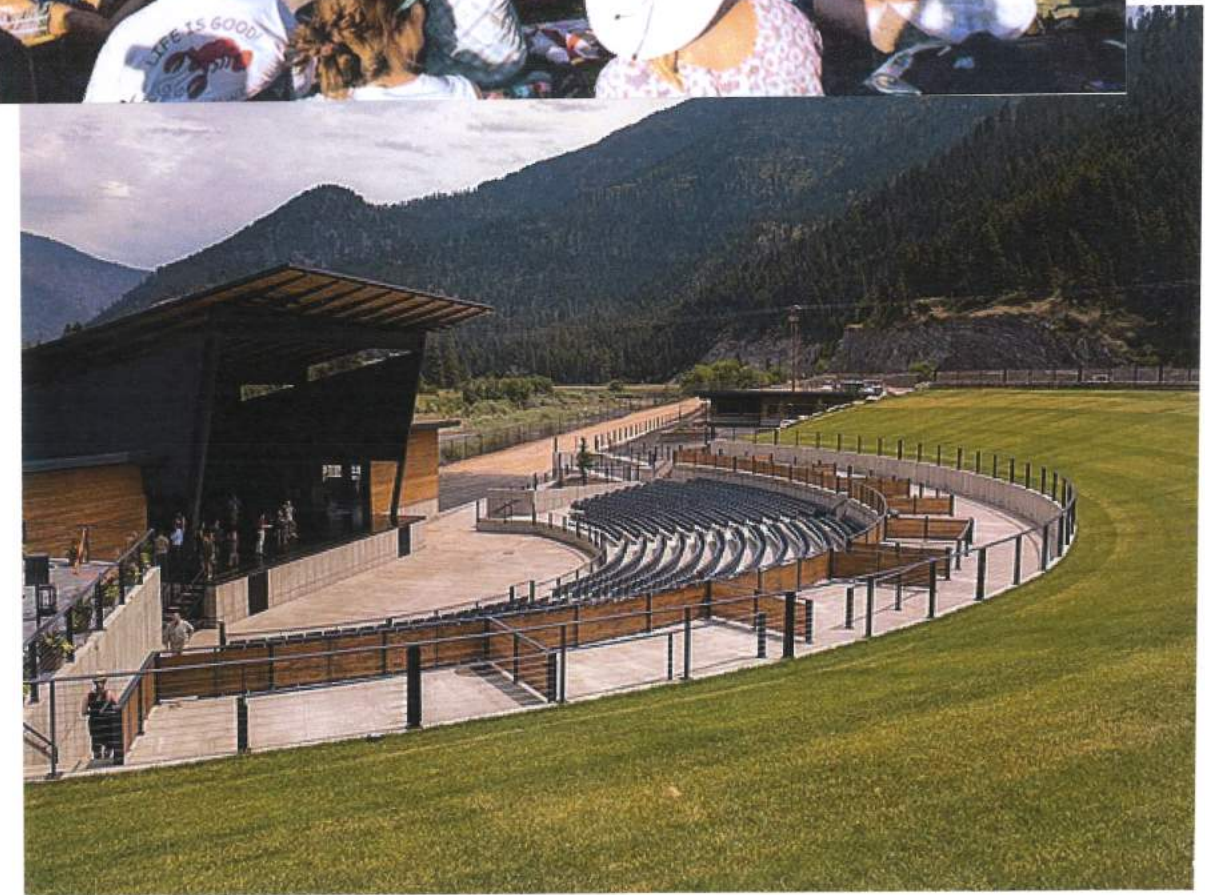




(2,750 FIXED SEATS)



INDOOR ARENA



AMPHITHEATER

(4,200 SEATS)

# MASTERPLAN - OPTION "A"

EXPO HALL EXPANSION / ENCLOSED ARENA / AMPITHEATER

MAY 23, 2020

**METRAPARK**

CHARLES D. SMITH ARCHITECTURE & PLANNING, LLC



## OPTION "B"

1. GRANDSTANDS
  - A. Similar to the North Dakota State Fair entertainment facility.
  - B. Entertainment with stage.
  - C. Rodeo.
  - D. Equestrian and livestock events.
  - E. Monster trucks, etc.
2. ATHLETIC STADIUM
  - A. Funded by School Board.
  - B. A community wide need.
  - C. Accommodates some entertainment.
  - D. Space taker.
  - E. Convenient parking.
  - F. Adds activity to the new pedestrian mall.

## Legend

1. Expo & 1st Intersection Improvements
2. Proposed Mixed Use Development
3. Proposed Hotel & Restaurant
4. Pedestrian Bridge / Billings Entryway
5. Food Truck Court / Flex Space
6. 5th Avenue Corridor / Transit Line
7. Transit Station
8. East Billings Urban Redevelopment District
9. MetraPark Entryway Beautification Project
10. Signalized Entry / Exit
11. Gate 1 – RV Park
12. Dutcher Trail System
13. RV Park
14. Improved Carnival / Parking Lot
15. North Parking Lot
16. 1<sup>st</sup> Interstate Arena Improvements
17. Montana Pavillion
18. Expo Center
19. Expo Center Expansion
20. Pedestrian Mall
21. New Horse Barns
22. Cattle Ties
23. Grandstands / Show Arena / Rodeo / Stage
24. Athletic Stadium
25. Superbarn
26. Food Court



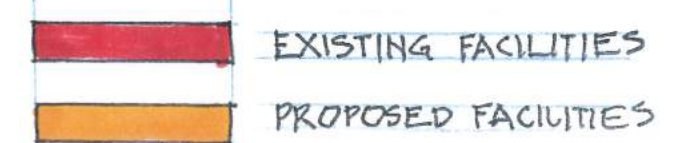
# MASTERPLAN - OPTION "B"

EXPO HALL EXPANSION / GRANDSTAND / ATHLETIC STADIUM

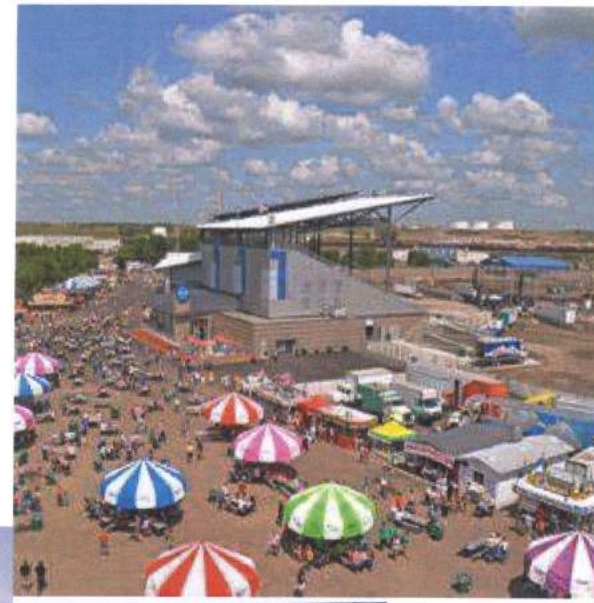
MAY 23, 2020

**METRAPARK**

CHARLES D. SMITH ARCHITECTURE & PLANNING, LLC







GRANDSTANDS  
(7,000 FIXED SEATS)

ATHLETIC STADIUM  
(5,000 - 6,000 SEATS)

# MASTERPLAN - OPTION "B"

EXPO HALL EXPANSION / GRANDSTAND / ATHLETIC STADIUM

MAY 23, 2020

**METRAPARK**

CHARLES D. SMITH ARCHITECTURE & PLANNING, LLC

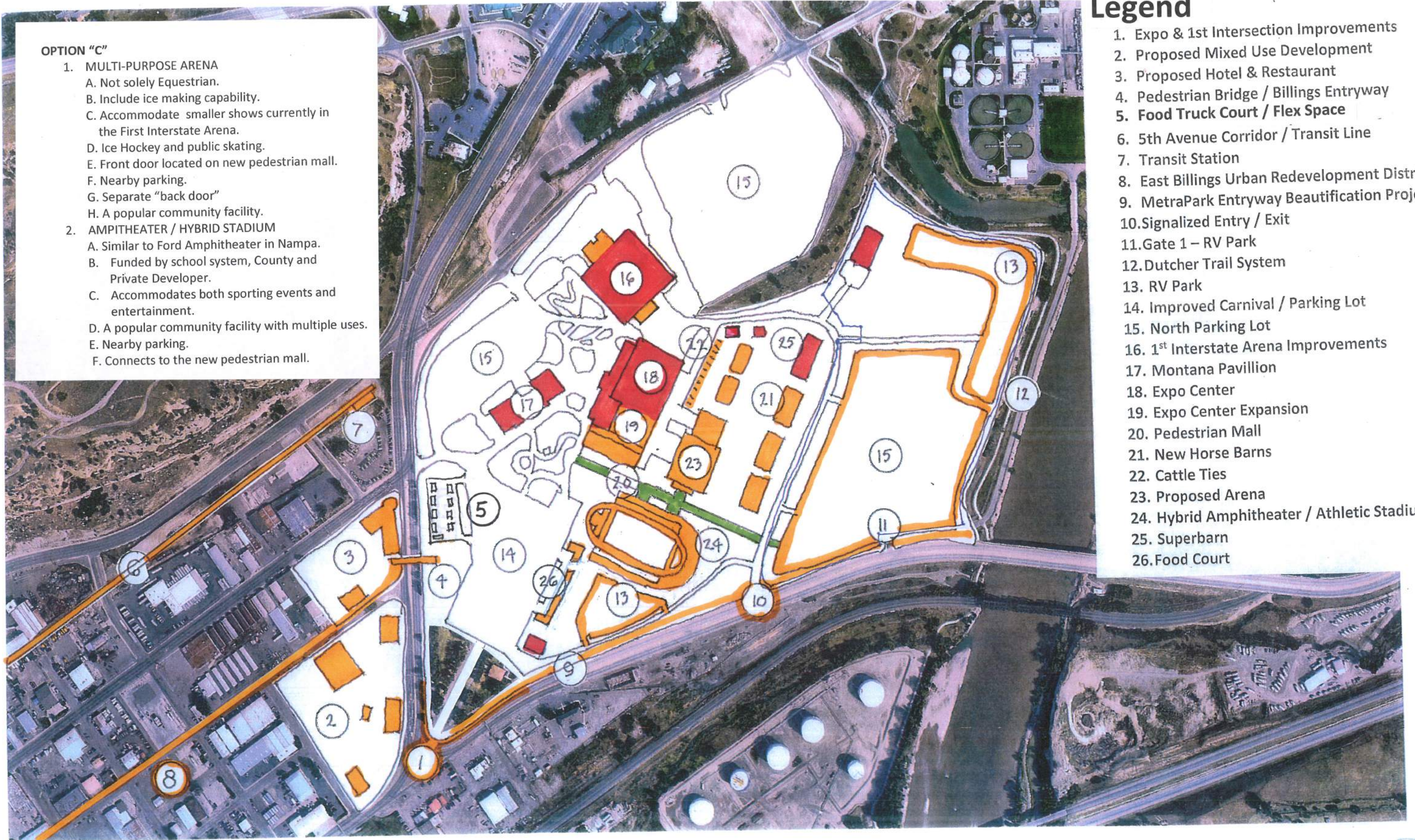


# OPTION "C"

1. MULTI-PURPOSE ARENA
  - A. Not solely Equestrian.
  - B. Include ice making capability.
  - C. Accommodate smaller shows currently in the First Interstate Arena.
  - D. Ice Hockey and public skating.
  - E. Front door located on new pedestrian mall.
  - F. Nearby parking.
  - G. Separate "back door"
  - H. A popular community facility.
2. AMPITHEATER / HYBRID STADIUM
  - A. Similar to Ford Amphitheater in Nampa.
  - B. Funded by school system, County and Private Developer.
  - C. Accommodates both sporting events and entertainment.
  - D. A popular community facility with multiple uses.
  - E. Nearby parking.
  - F. Connects to the new pedestrian mall.

# Legend

1. Expo & 1st Intersection Improvements
2. Proposed Mixed Use Development
3. Proposed Hotel & Restaurant
4. Pedestrian Bridge / Billings Entryway
5. Food Truck Court / Flex Space
6. 5th Avenue Corridor / Transit Line
7. Transit Station
8. East Billings Urban Redevelopment District
9. MetraPark Entryway Beautification Project
10. Signalized Entry / Exit
11. Gate 1 - RV Park
12. Dutcher Trail System
13. RV Park
14. Improved Carnival / Parking Lot
15. North Parking Lot
16. 1<sup>st</sup> Interstate Arena Improvements
17. Montana Pavillion
18. Expo Center
19. Expo Center Expansion
20. Pedestrian Mall
21. New Horse Barns
22. Cattle Ties
23. Proposed Arena
24. Hybrid Amphitheater / Athletic Stadium
25. Superbarn
26. Food Court



## MASTERPLAN - OPTION "C"

EXPO HALL EXPANSION / ENCLOSED ARENA / AMPITHEATER-STADIUM HYBRID

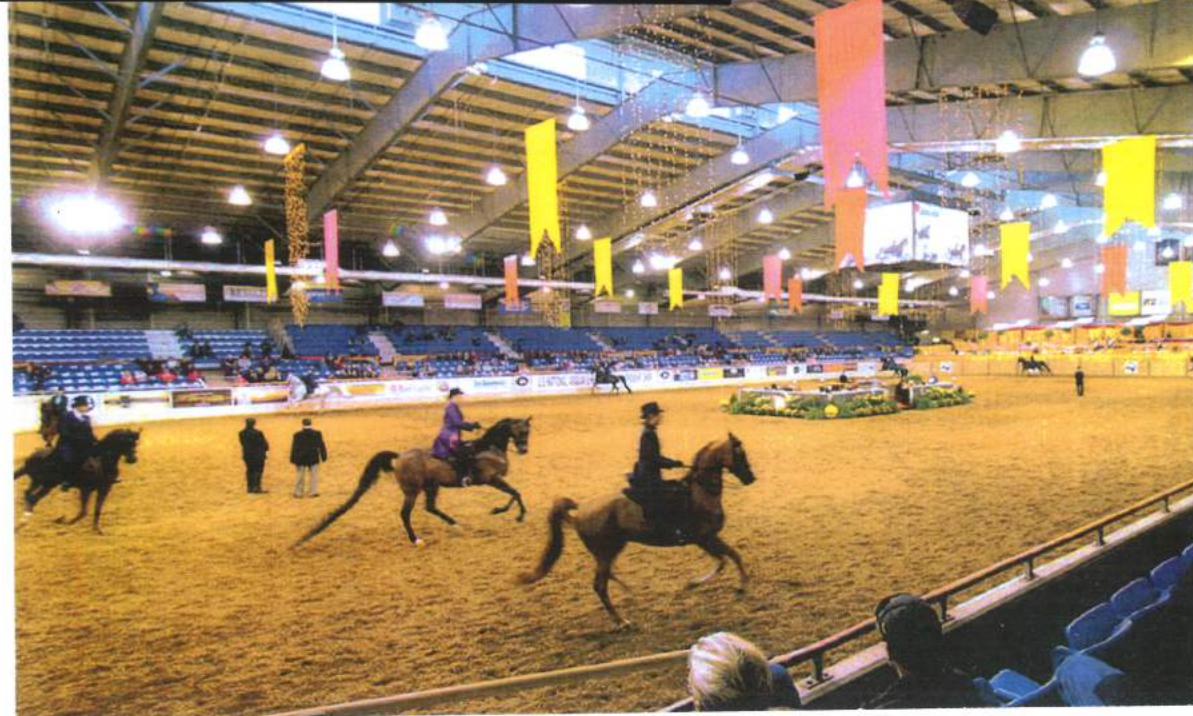
MAY 13 2010

METRAPARK

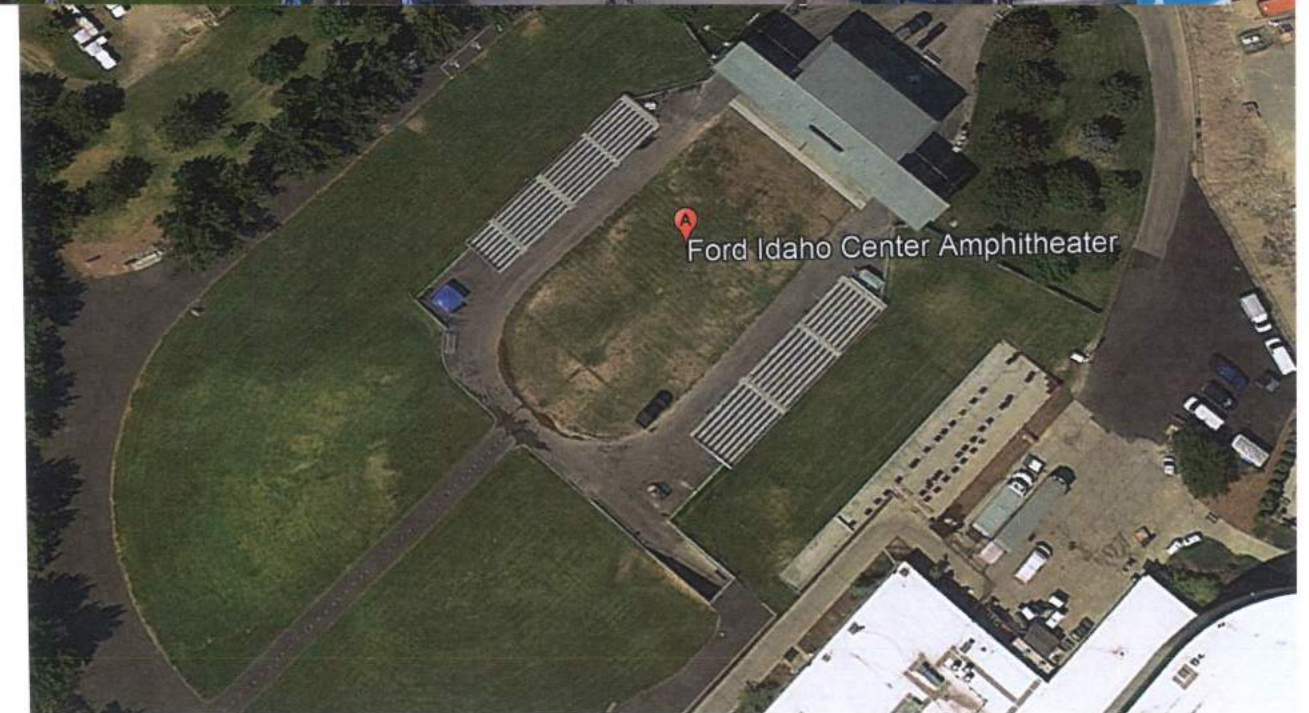
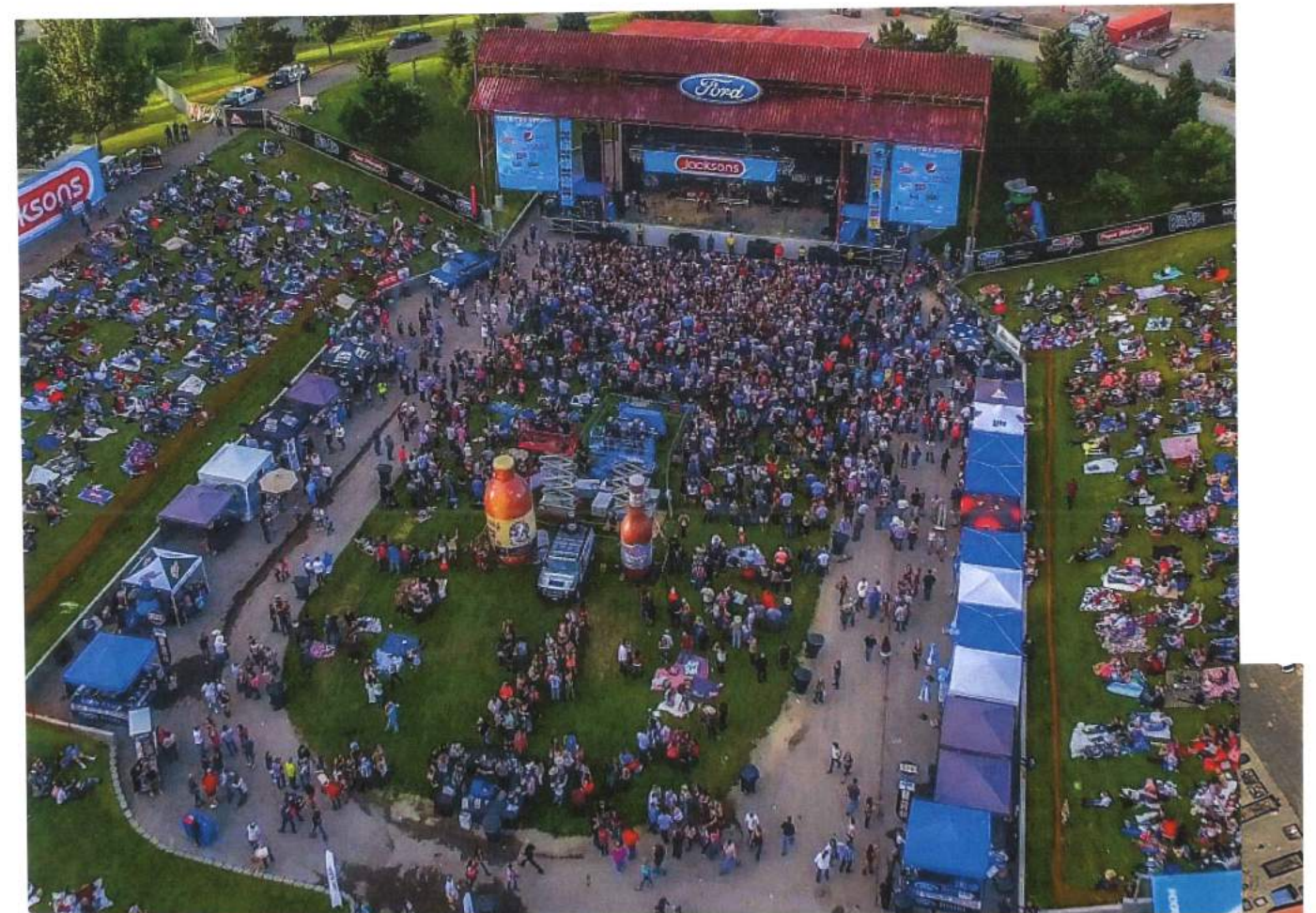
CHARLES D. SMITH ARCHITECTURE & PLANNING, LLC

EXISTING FACILITIES  
PROPOSED FACILITIES





ENCLOSED ARENA  
(2,750 FIXED SEATS)



AMPHITHEATER / STADIUM HYBRID  
(10,500 SEATS)

# MASTERPLAN - OPTION "C"

EXPO HALL EXPANSION / ENCLOSED ARENA / AMPITHEATER-STADIUM HYBRID

MAY 23 2020

METRAPARK

CHARLES D. SMITH ARCHITECTURE & PLANNING, LLC