

# EXPLORE RED LODGE

FALL 2020



## INSIDE

- Babcock and Miles**..... Page 1
- Market in the Mountains**..... Page 2
- Red Lodge Clay Center expanding horizons**..... Page 3
- Carbon County Arts Guild**..... Page 4
- Yellowstone Wildlife Sanctuary**..... Page 4
- Places to go and people to see**  
*Events, food, and everything Red Lodge has to offer*..... Page 4

Explore Red Lodge is a special advertising section of The Billings Gazette



**Senior Editor of Special Sections**  
Charity Dewing

**President**  
Dave Worstell

**Advertising Director**  
Ryan Brosseau

Access Explore Red Lodge at  
[www.billingsgazette.com/specialsections](http://www.billingsgazette.com/specialsections)

## It's all about the *winer* things in life at Babcock & Miles



COURTESY PHOTO

BY CHARITY DEWING  
[cdewing@billingsgazette.com](mailto:cdewing@billingsgazette.com)

If you are a self-proclaimed foodie, Red Lodge seems to be the Montana hidden gem of gourmet, inventive and extraordinary cuisine. Located at 105 West 12th St., Babcock & Miles is an eatery, gift shop, and artisanal wonderland of cheese, food and wine.

Kim and Steve Haman, who have owned the business since 2016, are devout food and wine aficionados. When the store opened in 2008, the couple had just moved to Red Lodge from Arizona. Upon hearing about the new food and wine shop opening, Steve was given the chance to oversee the wine ordering at the store, and the rest is history.

"At its inception in 2008, Babcock & Miles strived to be the 'Merchants of the Delectable' and help food lovers discover the world of specialty items that existed beyond what was commonly or locally available. Over the years our philosophy has become clear. We have a responsibility to preserve, protect, and promote food and wine products of unique provenance," said Steve and Kim.

### High Quality

Whether you want to eat on the patio of Babcock & Miles or find ingredients to create a masterpiece meal at home, this store has it all. From decadent sandwiches like the Italian muffuletta, to complete meal kits that create a gourmet five-course meal, the store is keen on high quality and authentic

Please see WINE, Page 12

## Mountain Cuisine

in an Old Favorite Spot



Enjoy Mountain Casual Fine Dining in the heart of Historic Red Lodge! Be sure to check out our outdoor patio dining area!



116 S. Broadway • 406-446-9900  
[www.CarbonForkRestaurant.com](http://www.CarbonForkRestaurant.com)



**Virtual Fun Run!**  
Run on your own time, at your own place, at your own pace!

In 2019, donors, sponsors, volunteers and participants raised more than \$270,000 for 60 local non-profits in Carbon County. With your help, we'll crack \$3 million during the course of 17 years.

CONNECTING PEOPLE  
BUILDING COMMUNITY



Register online at  
[rlacf.org/funrun](http://rlacf.org/funrun)  
or call  
**406-446-2820**  
122 S. Hauser Ave.  
[info@rlacf.org](mailto:info@rlacf.org)

## WHOOO'S LOOKING FOR AN ESCAPE RIGHT NOW?



'Blue Sky' is the perfect romantic getaway for 2! Where social distancing comes naturally!



32 Blue Sky Lane, Red Lodge, MT 59068  
**[www.blueskycabins.com](http://www.blueskycabins.com)**  
406-446-0186





COURTESY PHOTOS

## Wine

From 11

ingredients that represent the world's finest foods.

The store also offers ready-made picnic baskets for a relaxing day outdoors.

"Just a few of the things that might grab you when you look at our shelves include our many pastas, sauces, olives, vegetables, tapenades, jellies and jams, honeys, salts and sugars, crackers, and cookies from all over the world. We offer a wide selection of cured meats, salamis, chorizos, sea food, and foie gras in our fridges, in addition to local ground beef and lamb, Italian sausage, bison, duck, turkey, chicken and rabbit in our freezer displays," said Steve and Kim.

## Cheese if you please

The cheese selection is impressive. From Spain, Italy, France, and England to California, Wisconsin, and Vermont, the store carries as many as 70 artisanal cheeses.

"Cow, sheep, goat, and buffalo we have it all," said Steve and Kim.

For those looking for cheese sourced from the Big Sky State, they have that, too.

## Wine and dine

With over 1,000 select wines from around the world, the store offers a vast assortment of aromas and flavors fit for a daily glass with dinner or the dedicated collector.

"Beer drinkers, fear not, as our ever-expanding selection features craft beers from Montana, the U.S., and all over the world, as well as a delightfully modest selection of ciders and sakes. As merchants of the delectable, we want our store to be the end of



your search and the start of your culinary journey," said Steve and Kim.

## Keeping it real

For Kim and Steve, authentic cuisine means keeping the ingredients as real as it can get. Like the hand-select wine, the food also needs to honestly represent the region it comes from - which means avoiding mass-produced and genetically engineered products.

"We champion small specialty food and wine producers and help them tell their stories. What is it that gives Old World flavors their allure? We call it terroir. It's that special sense of place found in the aromas, textures, and tastes that says unabashedly, 'this comes from somewhere special!' Not from a factory, not from a lab, but from the land," said Steve and Kim.

"Whether it's Montana farmstead goat cheese or Belize single origin chocolate, those special products tell the stories of where they come from with every mouth-watering bite."

For more information call (406) 446-1796 or visit their Facebook or Instagram pages.

# Finding joy in the little things at MARKET IN THE MOUNTAINS

BY CHARITY DEWING  
cdewing@billingsgazette.com

Found. Made. Modern. Vintage. That is the philosophy behind Market in the Mountains, a gift shop that opened May 30 at 1 N. Broadway, in Red Lodge.

Owners and sisters, Danell Boos-Bader and Lindsey Slevira have always had a fondness for vintage and gift stores. By trade, both women are cosmetologists, working in salons as hair stylists three or more days a week.

Whenever the pair would travel together, they would stop at various antique and gift shops. Inspired, the women decided to create a one-day event and made a call for vendors to show and sell their work last August.

Pleasantly surprised by the number of participants and patrons, both women knew they were on to something.

Soon, they began looking for a storefront and found the perfect location to create their own version of the gift shops they had always found inspiration.

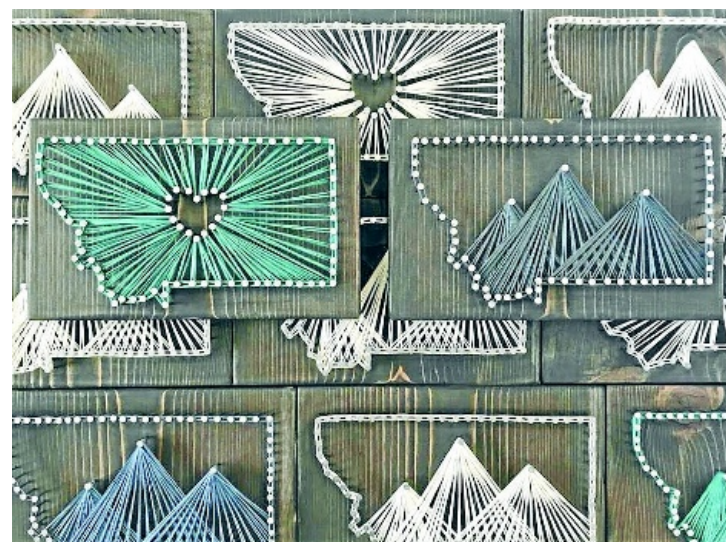
The building located at 1 N. Broadway once served as a law office and prior to that, a bank that was famously robbed in 1897 by the Sundance Kid and the Wild Bunch outlaws.

"It is right across from the Pollard, which is a great place to be. I was shocked how I had never really noticed the building or knew the history of it," said Bader.

The building itself seems to be a perfect fit for the intention behind the store. After restoring and renovating, the women opened the doors to Market in the Mountains, offering their own spin on reclaimed items, antiques, infant clothing, and specialty gift items.

"We have everything in the shop: nail polish, lotions, handmade jewelry, cards, wall décor, clothing, candles, reclaimed items - and it is important that we keep prices fair because we want people to continue shopping with us," said Bader.

The store does not have vendors like the one-day market event, but Boos and Slevira wanted to support small-busi-



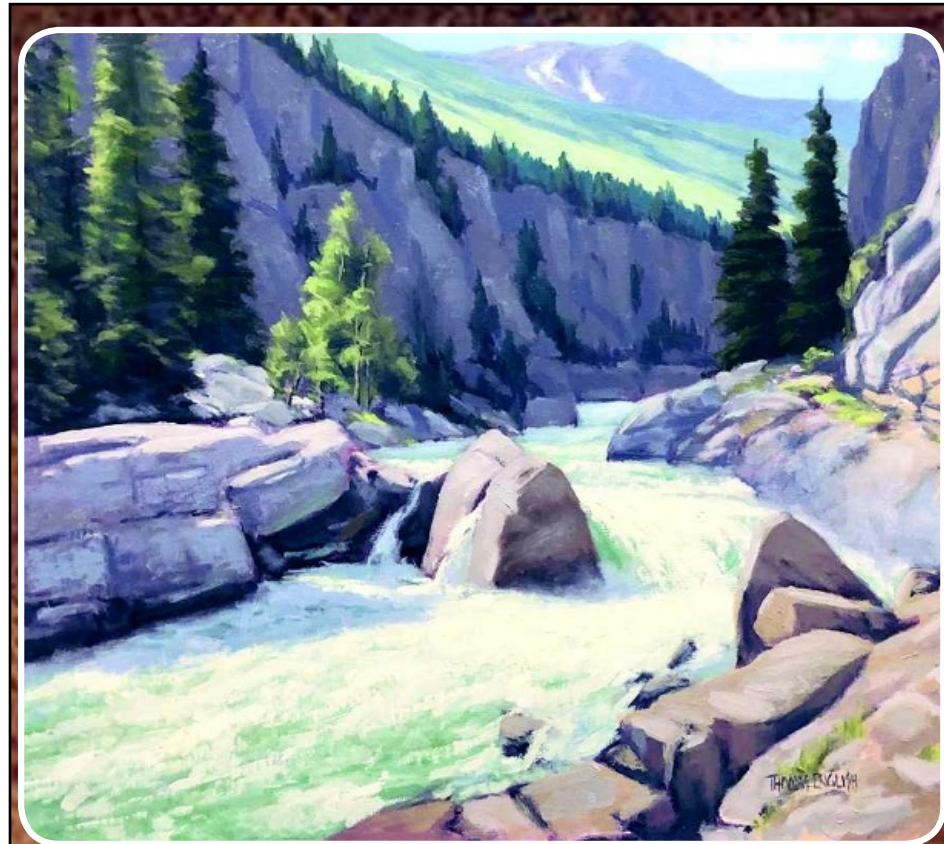
Lodge inspired prints created by the local business Headwaters Studio Design and Screen-printing.

"I am always looking for new ideas and brainstorming about what else we can do. We always want to bring new things to the store," said Bader.

For the two sisters, Market in the Mountains is more than a hobby. Like their passion to see clients smile and feel joyful in the salon chair, their passion to watch customers find joy in their store is equally fulfilling.

"I love hearing laughter break out in the store after someone reads a funny card - and I have customers who tell me just being at the store makes them happy," said Bader.

For more information, visit the Market in the Mountains Facebook or Instagram pages.



## Exhibitions at the Carbon County Arts Guild & Depot Gallery

### AUGUST 15-30, 2020

**Mindful Observations:**  
*Paintings by Stephanie Rose and Dorci Newman-Tremblay*  
Main Gallery

**Montana Treasure: Solo Exhibition**  
*by Connie Herberg*  
North Gallery

Montana Painters Alliance Online Exhibition  
On view through August 31, 2020  
Features artwork from artists living around the state who are part of the Montana Painters Alliance.

### SEPTEMBER 4-28, 2020

**Continuum: Contemporary Native American Art**  
Main Gallery

This traveling exhibition includes work by 15 artists including Neil Parsons, Ernie Pepion, Sara Siestreem, Jaune Quick-to-See Smith, Dwayne Wilcox, and Melanie Yazzie.

Organized by: *Missoula Art Museum (MAM) & Kootenai College*

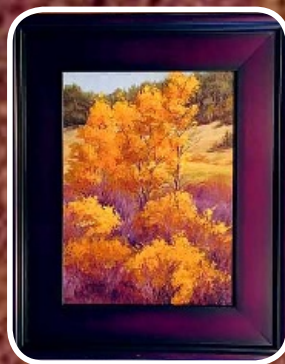
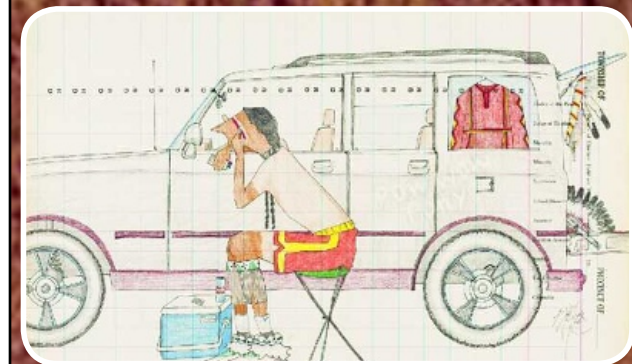
Sponsored by:

*The Montana Art Gallery Directors Association (MAGDA), a statewide service organization for non-profit museums and galleries*

Supported in part by:

*Grants from the Montana Arts Council, a state agency funded by the State of Montana  
Montana's Cultural and Aesthetic Projects Trust Fund  
National Endowment for the Arts*

FREE and Open to the Public • Thursday - Monday • 12 pm - 4 pm



## SAVE THE DATE:

### Stay Tuned for Future Events!

**Carbon County Arts Guild & Depot Gallery**

11 W. 8th Street, Red Lodge, MT  
www.carboncountydepotgallery.org  
www.facebook.com/ccag.cg



# New exhibitions highlight ASIAN CULTURE

BY CHARITY DEWING  
cdewing@billingsgazette.com

Steven Y. Lee and Beth Lo will be on exhibit at the Red Lodge Clay Center from Aug. 7-29.

While some work may appear unassuming, there is no denying the intricate, unique, and beautiful narrative behind each piece created by Lee and Lo.

From tea bowls and plates to figures that represent Asian culture, the images and titles allow the observer to find emotional and spiritual ties to the art.

## Steven Y. Lee

Lee's work evokes tranquility through imagery, like a gold fish, which is believed to represent effects of love, courage, success, perseverance, and good fortune. While the art appears humble, the application of traditional symbols connects the onlooker to the culture.

**BIO:** Steven Young Lee has an impressive background in ceramic arts as a student, instructor, and in skill. He received his BFA and MFA in Ceramics from Alfred University. Originally from Chicago, Lee now lives in Helena, where he is the director of resident artists at the Archie Bray Foundation for Ceramic Arts. Lee has traveled throughout the U.S. and Asia teaching and guest lecturing. His work has been collected around the world, including the Smithsonian.

## Beth Lo

Lo's art is unpretentious yet evocative. Her work features forms like food boxes representing the appropriation of Chinese culture. It inspires deep thought through the subtle and witty dialogue created through the observer and the design.

"I hope the viewer finds the work engaging and instructive. In many of my pieces there is humor. The sculptural pieces are often more serious in tone. The



COURESTY PHOTO

Art from the Lee and Lo collaboration featured at the Red Lodge Clay Center Aug. 7-29.

Chinese takeout boxes in two of the sculptures refer to the American Chinese dichotomy in my life. The takeout box refers to food and nutrition, but specifically in an American context: takeout food from a Chinese restaurant in the United States. The piece '99 Years' is a direct tribute to my mother who passed away at age 99. She was a self-taught Chinese brush painter and the nine Chinese takeout boxes are painted with copies of her paintings," said Lo.

Lo's inspiration is often a direct result of major events happening in her life or around the world, whether it be a birth, death, or crisis that affects everyone - like COVID-19.

"I make quick drawings in my sketchbook and from those sketches try to capture that initial emotion and form in the sculptures and pots that I make. I use both hand building and throwing techniques to create forms and I use brush and underglazes to create imagery," said Lo.

**BIO:** Beth Lo's work has been exhibited internationally at many universities and museums. She received her bachelor's degree from the University of Michigan and then received her MFA from the University of Montana.

Her family emigrated from China to Indiana just before Lo's birth. Her Asian heritage is a staple in her work.

"I have been making work about childhood and family for 33 years, since I became a mother in 1987. Raising a child made me aware of all the issues of parenting and the joys of watching a child grow. I started using the image of Chinese children in my work as a way of celebrating and remarking on the characteristics of a child: innocence, vulnerability, potential and playfulness. Having a son made me aware of my parents who immigrated from China, my Asian heritage and childhood growing up as a minority in the United States. Multi-culturalism, language, stereotyping and a question of what it means to be foreign are all ideas present in my work," said Lo.

The Red Lodge Clay Center gallery is open by appointment Mondays through Saturdays, 10 a.m. to 4 p.m. For more information, call (406) 446-3993 or visit redlodgeclaycenter.com.

# Red Lodge Clay Center works to support diverse artists

BY CHARITY DEWING  
cdewing@billingsgazette.com

The Red Lodge Clay Center is working to highlight more people of color and LGBTQ+ artists in response to a growing movement to address racism, bigotry and hate crimes in the U.S.

"We want people to know we are listening, and we are here to help as art advocates," said founder and executive director, David Hiltner.

The center aims to highlight more Black, Indigenous and People of Color (BIPOC) and Lesbian, Gay, Bisexual, Transgender, Queer (LGBTQ+) artists who have been underrepresented.

"We have more questions than answers right now," Hiltner said. "We have to address what is happening. Lives are at stake. Complacency and remaining silent condones racism."

While it is Hiltner's concern that all the staff and clay center remain safe, the importance to be actively anti-racist is critical during this time.

"In the 14 years the clay center has been open, we have never had an issue here" with racism toward a featured artist, he said. "I feel that Red Lodge is a good community."

To begin, Hiltner and staff are looking to expand and create more outreach programs for rural, tribal, and low-income communities. The hope is to provide scholarships, bridge gaps and offer a chance for those who otherwise may not have the opportunity



COURTESY PHOTO

Wesley Harvey is a featured artist at the Red Lodge Clay Center,

to take classes at the clay center.

While COVID-19 has caused cancellation of all summer and fall events at the center, the focus is to represent BIPOC and LGBTQ+ artists and minority communities moving forward. The tentative plan is to be in full swing by summer 2021 - in accordance with the developing treatment/vaccine of COVID-19 - continuing

and growing as a vessel to promote equality and anti-prejudiced in Montana and across the nation.

"Art is a conduit. It is a universal language. It represents different cultures and brings people together. Even if you cannot verbally communicate with someone else, you can always draw a picture," Hiltner said.

For more information visit redlodgeclaycenter.com or call 406-446-3993.

## ELLIOTT

### INTERIOR DESIGN

- Remodels & New Construction
- Kitchen & Bath Design
- Color Consultation
- Window Treatments & Blinds
- Architectural Review / Space Planning

**LORI ELLIOTT ASID, NCIDQ**  
**406.551.3995**

ElliottInteriorDesign.com • lorielliott123@gmail.com

## PHOENIX PEARL TEA

CRAFTED TEAS & TABLETOP GAMES

WE SHIP!

ORDER ONLINE OR BY PHONE

(406) 446-2742 - PHOENIXPEARLTEA.COM

While our shop is still open in Red Lodge, MT, we want everyone to know that we ship everywhere! Our entire selection of loose leaf teas & herbs are online, and our resident tea mavens are happy to help you find the perfect tea or game to suit your needs.

Experience the curated luxury that only Phoenix Pearl Tea can provide.

## RESERVE YOUR TEE TIME ONLINE

**REDLODGE MOUNTAIN GOLF COURSE**

REDLODGE MOUNTAIN.COM/TEE-TIMES

**Elect**  
**GORDON SIRRINE**

Accountability, Honesty, and Transparency

Montana Values

Carbon County Heritage (4th generation)

Vote Gordon Sirrime as your Carbon County Commissioner on November 3, 2020

For more information visit:

Facebook: gordonsirrime2020

Instagram: gordonsirrime

Web Page: https://gordonsirrime.com

Email: gordonsirrime2020@gmail.com

Or call Gordon at 406-426-4212

Paid for by Gordon Sirrime PO Box 111 Belfry, MT 59008

## CARBON FORK

116 S. Broadway  
(406) 446-9900  
www.carbonforkrestaurant.com

If you love our restaurant, be sure to check out our new retail area, kitchen tested and approved merchandise.

## Book Now at the Roosevelt Center

Arterial Drive performs outside at the Roosevelt Center.

We know getting together is difficult right now, but the Roosevelt Center is here to help you navigate the challenges that arise in our new normal. With plenty of room to spread out, multiple venue options, increased safety protocols and a helpful, knowledgeable staff, the Roosevelt Center is here to make your next gathering a safe and fun experience for all!

Host your next event today  
RooseveltCenter@rlacf.org  
406-425-0480  
www.rooseveltcenterredlodge.org

## Condominium-Style Apartments & Studio Units

1505 SOUTH BROADWAY  
406-446-1601  
www.chateaurouge.com

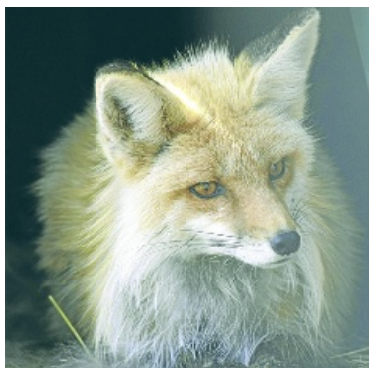
# KEEPING IT WILD

## at the Yellowstone Wildlife Sanctuary

CONTRIBUTION BY GARY ROBSON  
Executive director at the Yellowstone Wildlife Sanctuary



COURTESY OF THE YELLOWSTONE WILDLIFE SANCTUARY



COURTESY OF THE YELLOWSTONE WILDLIFE SANCTUARY

### PAULI

PAULI the Prairie Falcon came to us in 2012 from Montana Fish, Wildlife and Parks after suffering an injury that led to a wing amputation. For a while Pauli was only given perches low to the ground, to accommodate her wing injury. In 2019, we opened an adjacent enclosure for her, doubling her space. She now seems content perching on higher platforms and branches. Pauli eats rodents but prefers quail when we can get them. We never offer her live prey since she can't hunt with only one wing and she could get hurt.

### REX THE RED FOX

REX the Red Fox was born in the Centennial Valley of Montana and adopted as a pet when he was just a tiny kit. Generally, foxes don't make good pets, one of the reasons being that they mark their territory with urine mixed with a musky scent that smells a lot like a skunk. Since he is completely habituated to humans, he couldn't live in the wild, so he went to Montana Fish, Wildlife & Parks. He has been on permanent loan to the Yellowstone Wildlife Sanctuary since 2009, when he was about six months old. When he gets treats like eggs or whole prey, he carries them around until he finds a place to hide them to eat later

# Exhibitions at The Arts Guild

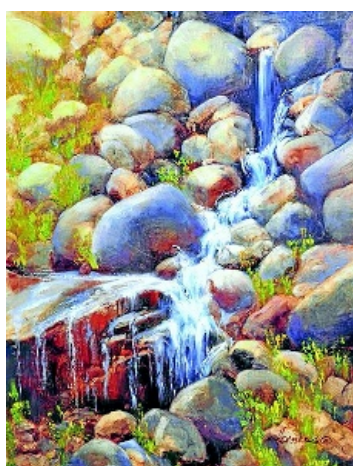
COURTESY OF THE CARBON COUNTY ARTS GUILD & DEPOT GALLERY

These times have been strange, but there is always something beautiful to celebrate. Artists have continued to work diligently to produce stunning works during the pandemic. Take a break from the world events and enjoy art in person by visiting the Carbon County Arts Guild & Depot Gallery. You can also explore art from the safety of your home by visiting our website to view virtual shows.



All the Gold by Connie Herberg

**Mindful Observations and Montana Treasure August 15-30:** Paintings by Stephanie Rose and Dorci Newman-Tremblay and Montana Treasure. Solo Exhibition by Connie Herberg will be on view in the gallery Thursday through Monday, 12 to 4p.m. Mindful Observations will fill the Main Gallery with paintings that are all about careful observations and translating a feeling inspired by the senses. Montana Treasure is a solo show celebrating the stunning diversity of the state. Herberg's paintings of sweeping vistas and small wildflowers command attention with stunning colors and dynamic strokes.



Tumbling Waters by Connie Herberg



Cattails by Stephanie Rose

The Montana Painter Alliance is showing art virtually on the Guild website: carboncountypotgallery.org. This is a group of more than 30 artists that meet and paint plein air style in different locations. The artists support and challenge each other by sharing skills and

inspiring creativity.

There are many other pieces of art available to see and purchase in the Depot Gallery made by our 180 artist members. Paintings, drawings, sculptures, jewelry, scarves, books, ceramics, wood working, and stained glass are some of the handcrafted, one of a kind items

that you will find in the gallery. The mission of the Carbon County Arts Guild & Depot Gallery is to support, inspire, and encourage all artists. Reaching out, the Carbon County Arts Guild & Depot Gallery provides art education and exposure to the visual, performing and literary arts for the benefit of the broadest possible audience.

For further information visit carboncountypotgallery.org or call the Guild at (406) 446-1370.

## PLACES TO GO, PEOPLE TO SEE | WHERE TO EAT, SHOP AND GO IN RED LODGE

- |   |  |  |   |   |
|---|--|--|---|---|
| <p><b>EAT</b></p> <ul style="list-style-type: none"> <li>■ Bogart's Restaurant<br/>11 Broadway Ave. S.<br/>(406) 446-1784</li> <li>■ PREROGATIVE Kitchen<br/>104 Broadway Ave. S.<br/>(406) 445-3232</li> <li>■ Piccola Cucina at Ox Pasture<br/>7 Broadway Ave. N.<br/>(406) 446-1212</li> <li>■ Carbon County Steakhouse<br/>121 Broadway Ave. S.<br/>(406) 446-4025</li> <li>■ Scoops Pizza and Ice Cream<br/>205 Broadway Ave. S.<br/>(406) 446-4444</li> <li>■ Red Lodge Pizza Co<br/>115 Broadway Ave. S.<br/>(406) 446-3333</li> <li>■ Foster &amp; Logans Pub &amp; Grill<br/>17 Broadway Ave. S.<br/>(406) 446-9080</li> <li>■ Carbon Fork Restaurant<br/>116 Broadway Ave. S.<br/>(406) 446-9900</li> <li>■ The Wild Table<br/>113 Broadway Ave. N.<br/>(406) 446-1941</li> <li>■ Pom Italian<br/>224 Broadway Ave. S.<br/>(406) 445-3333</li> <li>■ Sam's Tap Room &amp; Kitchen<br/>1445 Broadway Ave. N.<br/>(406) 446-0243</li> </ul> | <ul style="list-style-type: none"> <li>■ Prindy's Place<br/>407 Broadway Ave. S.<br/>(406) 446-0225</li> <li>■ Hardwood Smokehouse<br/>119 Broadway Ave. N.<br/>(406) 445-3500</li> <li>■ Honey's Cafe<br/>209 Broadway Ave. S.<br/>(406) 446-1600</li> <li>■ Mas Taco<br/>304 Broadway Ave. N.<br/>(406) 446-3636</li> <li>■ The Pollard Hotel<br/>2 Broadway Ave. N.<br/>(406) 446-3933</li> <li>■ Natali's Front Bar<br/>117 Broadway Ave. S.<br/>(406) 446-3933</li> <li>■ La Palmita<br/>205 Broadway Ave. S.<br/>(406) 790-0716</li> </ul> | <ul style="list-style-type: none"> <li>■ Red Box Car<br/>1300 Broadway Ave. S.<br/>(406) 446-2152</li> <li>■ Bull 'n Bear Saloon, Casino, &amp; Restaurant<br/>19 Broadway Ave. N.<br/>(406) 446-3753</li> <li>■ Red Lodge Ales<br/>1445 Broadway Ave. N.<br/>(406) 446-4607</li> <li>■ China Garden Restaurant<br/>202 Broadway Ave. S.<br/>(406) 446-9909</li> </ul> <p><b>COFFEE, TEA &amp; TREATS</b></p> <ul style="list-style-type: none"> <li>■ Phoenix Pearl Tea<br/>13 Broadway Ave. N.<br/>(406) 446-2742</li> </ul> | <ul style="list-style-type: none"> <li>■ City Brew Coffee<br/>616 Broadway Ave. N.<br/>(406) 446-1942</li> <li>■ Coffee Factory Roasters<br/>22 Broadway Ave. S.<br/>(406) 446-3200</li> <li>■ Katie Cakes<br/>24 Broadway Ave. S.<br/>(406) 475-0612</li> <li>■ Montana Candy Emporium<br/>7 Broadway Ave. S.<br/>(406) 446-1119</li> <li>■ Scoops Pizza and Ice Cream<br/>205 Broadway Ave. S.<br/>(406) 446-4444</li> <li>■ Kings Cupboard<br/>15 Pepsi Road<br/>(406) 446-3060</li> </ul> | <p><b>SHOP</b></p> <ul style="list-style-type: none"> <li>■ Sylvan Peak Mountain Shop<br/>9 Broadway Ave. S.<br/>(406) 446-1770</li> <li>■ Moosley Tee's<br/>14 Broadway Ave. S.<br/>(406) 446-3406</li> <li>■ Grizzly Peak Outdoors<br/>24 Broadway Ave. S.<br/>(406) 445-0751</li> <li>■ Sylvan Peak Mountain Shop<br/>9 Broadway Ave. S.<br/>(406) 446-1770</li> <li>■ Village Shoppe Clothing store<br/>118 Broadway Ave. S.<br/>(406) 446-2020</li> <li>■ Red Lodge Antique Mall<br/>101 Broadway Ave. S.<br/>(406) 446-0348</li> <li>■ The Ski Station<br/>510 Broadway Ave. N.<br/>(406) 446-1086</li> <li>■ Babcock &amp; Miles Wine store<br/>105 12th St. W.<br/>(406) 446-1796</li> <li>■ Red Raven Gift shop<br/>19 Broadway Ave. S.<br/>(406) 446-1520</li> <li>■ Bone Daddy's Custom Cycle Motorcycle shop<br/>210 Broadway Ave. N.<br/>(406) 425-3451</li> <li>■ Whispering Pines Antique Store<br/>12 Broadway Ave. S.<br/>(406) 446-1470</li> <li>■ Moo Country<br/>108 Broadway Ave. S.<br/>(406) 446-1084</li> <li>■ Paris Montana<br/>108 Broadway Ave. S.<br/>(406) 446-1084</li> <li>■ Lotions &amp; Potions<br/>8 Broadway Ave. S.<br/>(406) 426-1020</li> <li>■ Monie's<br/>6 South Broadway<br/>(406) 446-0133</li> <li>■ Sagebrush Sirens<br/>1 Broadway Ave. N.<br/>(406) 446-9845</li> <li>■ Beartooth Pass Harley-Davidson<br/>14 Broadway Ave. N.<br/>(406) 446-9856</li> </ul> |
|---|--|--|---|---|



### TO DO

- Drive the Beartooth Hiway
- Rent an ATV/UTV
- Horseback Riding
- Galleries and Antiques Shops
- Whitewater Rafting
- Hiking, Biking and Fishing
- Relax with Friends and Family
- Check out the Night Skies
- [redlodge.com/calendar](http://redlodge.com/calendar)

**...is just up the road from here.**

If there was ever a time to take a road trip and rediscover Montana, this is it. We live in an incredible area, take the time to get out and enjoy it. Take a hike, ride your mountain bike, spend time with your family, take the trail less traveled and truly enjoy life. Make Red Lodge your Base Camp to "Away From it All".

Check [redlodge.com/stay](http://redlodge.com/stay) for lodging options

[redlodge.com](http://redlodge.com)

