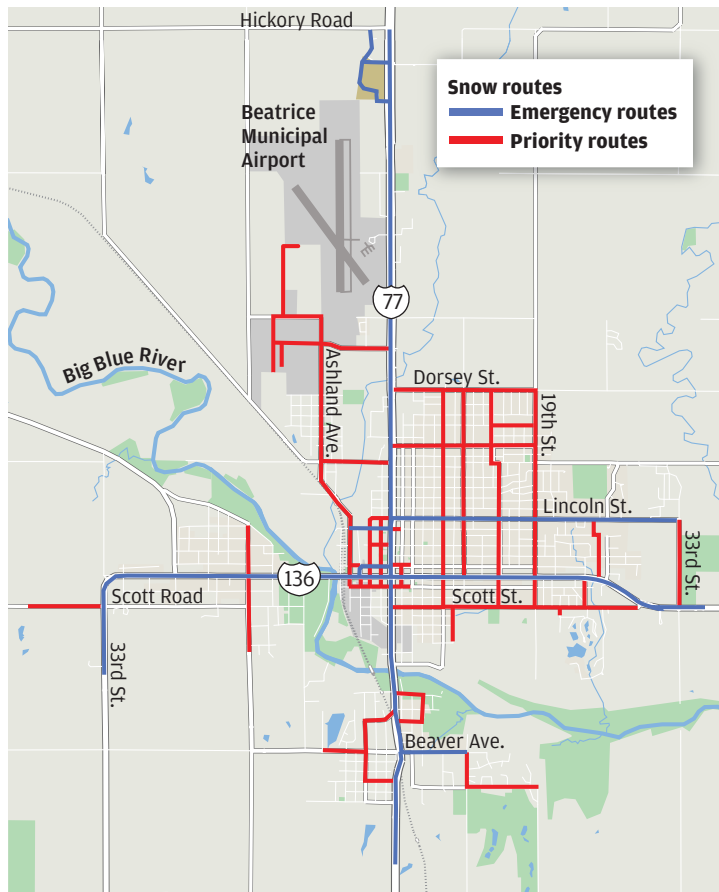


2 columns on the 5-column  
grid by 5.6 inches tall

## Beatrice snow routes

The city's first goal is to keep the highways and emergency snow routes open regardless of any storm. No parking is allowed on emergency routes if a snow emergency is declared. Priority routes are treated similarly to emergency routes, but parking is still allowed on them in snow emergencies.

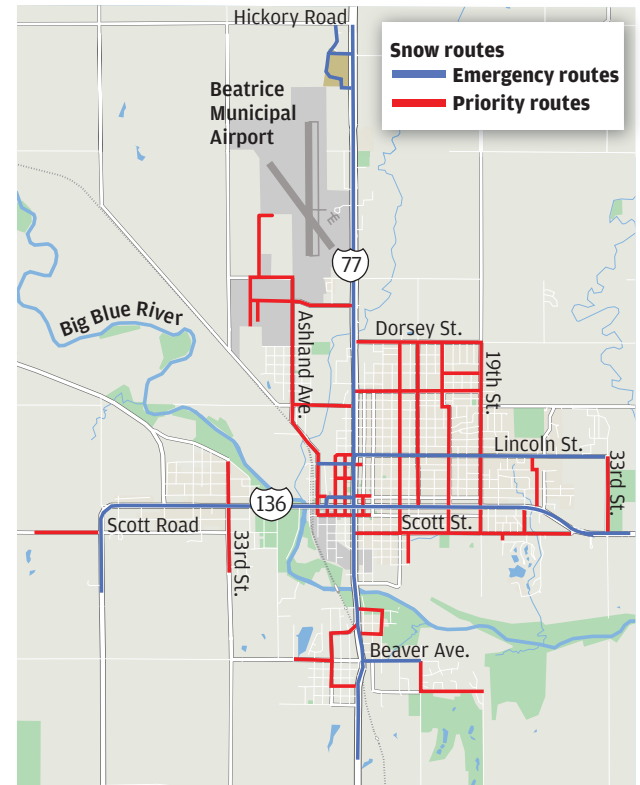


©Mapcreator.io | OSM.org, Lee Enterprises graphic

2 columns on the 6-column  
grid by 5.2 inches tall

## Beatrice snow routes

The city's first goal is to keep the highways and emergency snow routes open regardless of any storm. No parking is allowed on emergency routes if a snow emergency is declared. Priority routes are treated similarly to emergency routes, but parking is still allowed on them in snow emergencies.



©Mapcreator.io | OSM.org, Lee Enterprises graphic