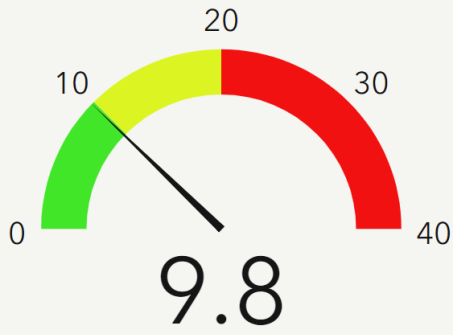


Coconino County is currently at a **MEDIUM** community level.

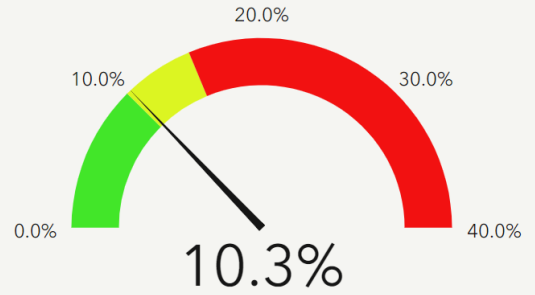
New COVID-19 admissions per 100,000 (7-day total)



Coconino: 9.8

Low	Medium	High
<10.0	10.0-19.9	>20.0

Percent of staffed inpatient beds occupied by COVID-19 patients (7-day average)



Coconino: 10.3%

Low	Medium	High
0-10.0%	10.0-14.9%	>15.0%