

EXHIBIT 6

Artist	Number	Title	Acquired	Date	Medium
Martin_ . . .	*95.272	Seward House_ Auburn		ca. 1985? (time of Patti Peters)	serigraph_ 25/50
Robinson_ W. G. (? after?)	*95.331	Profile portrait of Wm Seward_ looking left		1871	plaster
Adams_ Lawrence	*95.1	Abstract black and white	1987		woodcut
Adams_ Lawrence	*95.2	Red Woman	1971		acrylic on burlap
Adams_ Lawrence	95.9	Face	1996	1965	Paper_ Burlap
Arms_ John Taylor	*95.6	Bury St. Edmunds	1973	1940	etching_ 1/13
Ashby_ Dillu Taylor WC '23	80.2	Winter Scene w/Church	1980	1963	watercolor
Ashby_ Dillu Taylor WC '23	80.3	Lake Cayuga	1980		watercolor
Ashby_ Dillu Taylor WC '23	80.4	Still Life w/ Compote	1980	1963	watercolor
Ashby_ Dillu Taylor WC '23	80.5	Still Life w/Weeds	1980		watercolor
Blocherer_ Karl	89.3.10	City scene_ collecting branches?			litho_ probedruch 7
Blocherer_ Karl	89.3.11	Draped woman at a garden pool_	1989	1920?	litho
Blocherer_ Karl	89.3.12	beside her			litho_ probedruch 7/7
Blocherer_ Karl	89.3.13	Four women in pond			litho_ 88/100
Blocherer_ Karl	89.3.14	Landscape: river valley		1920	litho_ probedruch 4
Blocherer_ Karl	89.3.15	Nativity_ interior		1964	color litho
Blocherer_ Karl	89.3.16	Nude Woman dressing_ near a bureau		1933	litho
Blocherer_ Karl	89.3.17	over lake		1919	litho_ probedruch
Blocherer_ Karl	89.3.18	tree?		1920 (?)	litho_ p 2
Blocherer_ Karl	89.3.19	German (ret. 1958)			litho
Blocherer_ Karl	89.3.1a	Set 1: Dawn?: woman sitting up in bed_ hand to mouth			oil (?) on paper
Blocherer_ Karl	89.3.1b	fields			oil (?) on paper
Blocherer_ Karl	89.3.1c	Set 1: Morning: family on road			oil (?) on paper
Blocherer_ Karl	89.3.1d	beyond			oil (?) on paper
Blocherer_ Karl	89.3.1e	Set 1: Sunrise: interior w/man waking_ looking out window			oil (?) on paper
Blocherer_ Karl	89.3.2	Two nude women_ seated			w/white
Blocherer_ Karl	89.3.20	River valley			litho_ 17/20
Blocherer_ Karl	89.3.21a	Set?: city scene_ ? winter (? skier llhc)		1927?	color litho_ 4
Blocherer_ Karl	89.3.21b	Set?: Pantomime troupe parading in countryside?		1927	color litho_ 5
Blocherer_ Karl	89.3.21c	Set?: three hikers (?) picnicking on mountain side		1927?	color litho_ 3
Blocherer_ Karl	89.3.22	Sleeping nymph watched by standing nude male			litho
Blocherer_ Karl	89.3.23	Woman standing in a garden		1919	litho_ 7/25
Blocherer_ Karl	89.3.3	Two studies of a nude woman_ standing			sanguine_ heightened w/white
Blocherer_ Karl	89.3.6	Portrait of Else Fleissner_ WC Prof of German		ca. 1930 (?)	gouache on paper_
Blocherer_ Karl	89.3.8	Adam & Eve in Eden (a wood)		1923	in Germ)
Blocherer_ Karl	89.3.9	_Frohe Weihnachten/1959/Wünschen_	1989	1959	litho
Blocherer_ Karl	*95.48	Sketch of Pres. Macmillan		1931	
Blocherer_ Karl	*95.49	Portrait of William Sener Rusk_ WC Prof of Art		1931	litho (BB 10/95)
Blocherer_ Karl	89.3.24	Adoration of the Shepherds		1963	litho
Blocherer_ Karl	89.3.25	Backyard Scene			woodcut
Blocherer_ Karl	89.3.26	Backyard Scene (Baseball game ?)_			etching
Blocherer_ Karl	89.3.27	Boudoir scene	1989		litho
Blocherer_ Karl	89.3.28	FROHE WEIHNACHTEN above: GRÄPHISCHE		1920 ?	etching; 3/3
Blocherer_ Karl	89.3.29	Weihnachten 1926/Wünschen Kart U Minni Blocherer		1961	color litho or silkscreen
Blocherer_ Karl	89.3.30	Holy Family		1945	litho

Blocherer_ Karl	89.3.31	Holy Family (Adoration of the Child)			etching; 1 10/10
Blocherer_ Karl	89.3.32	Madonna and Child (? Rest on Flight into Egypt ?)			color litho or silkscreen
Blocherer_ Karl	89.3.33	Nativity	1964		color litho
Blocherer_ Karl	89.3.34	Nativity (Arrival of the Shepherds)	1920		etching
Blocherer_ Karl	89.3.35	three figures; subject ?	1920		litho; probadruk 3
Blocherer_ Karl	89.3.4	Landscape w/Buildings (Aurora ?)	1932		pencil (?) on paper
Blocherer_ Karl	89.3.7	Crucifixion	1926 ?		oil on paper
Blocherer_ Karl	89.3.10	City scene_ collecting branches?			litho_ probedruk 7
Blocherer_ Karl ?--or Gruber_ Lois (?)	89.3.5	Nude Woman (Lois Gruber?)	1918		sanguine on thin (? tracing?) paper
Chase_ Adelaide Cole	*95.80	Portrait of Helen Fairchild Smith (1869-1926)	1901	ca. 1900	oil on canvas
Dolwick_ William A.	78.5	Portrait of Evelyn Carroll Rusk (1898-1964)_ WC 1920	1978	1978	oil on canvas
Eipper_ M.	*95.135	Portrait of Helen Sears_ WC Librarian_ 1958-65		1969	oil
Fleissner_ Else (?)	89.1.1	View of Salzburg_ Austria	1989	1963	pen & ink on ? paper
Fleissner_ Else (?)	89.1.2	Lake Beach w/ Two Reclining Swimmers	1989		pen & ink_ watercolor
Fleissner_ Otto	89.2.1	Trees	1989		india ink_ wash; brush
Fleissner_ Otto	89.2.10	Trees in a Forest	1989		india ink_ wash; brush
Fleissner_ Otto	89.2.11	Trees in a Forest	1989		india ink_ wash; brush
Fleissner_ Otto	89.2.12	Cayuga in background ?)	1989		india ink_ wash; brush
Fleissner_ Otto	89.2.13	Townscape w/ Telephone Poles	1989		india ink_ wash; brush
Fleissner_ Otto	89.2.14	View of a Riverside Town_ w/Sailboats (? Maine ?)	1989		india ink_ wash; brush
Fleissner_ Otto	89.2.15	Hilly Landscape	1989		india ink_ wash; brush
Fleissner_ Otto	89.2.16	Hilly Landscape	1989		india ink_ wash; brush
Fleissner_ Otto	89.2.17	Mountain Landscape w/ Lake	1989		india ink_ wash; brush
Fleissner_ Otto	89.2.18	Mountain Landscape w/ Fields	1989		india ink_ wash; brush
Fleissner_ Otto	89.2.19	Mountain Landscape w/ Stream (vertical)	1989		india ink_ wash; brush
Fleissner_ Otto	89.2.2	Haystacks	1989		india ink_ wash; brush
Fleissner_ Otto	89.2.20	Mountain Landscape w/ Lake_ Rowboats	1989		india ink_ wash; brush
Fleissner_ Otto	89.2.21	Mountain Landscape w/ Lake_ Pier_ Deckchairs	1989		india ink_ wash; brush
Fleissner_ Otto	89.2.22	Mountain Landscape w/ Lake_ Pier_ Sailboats	1989		india ink; brush
Fleissner_ Otto	89.2.23	Mountain Landscape w/ Lake	1989		india ink_ wash; brush
Fleissner_ Otto	89.2.24	Mountain Landscape w/ Lake	1989		india ink_ wash; brush
Fleissner_ Otto	89.2.25	Harbor Scene w/ Tugboat_ Bremerhaven	1989	1937	blue ink_ wash; brush
Fleissner_ Otto	89.2.26	Harbor Scene_ probably Bremerhaven	1989		blue ink_ wash; brush
Fleissner_ Otto	89.2.27	Mountain Tops	1989		india ink_ dry brush
Fleissner_ Otto	89.2.28	Mountain Village	1989	[1966]	india ink_ dry brush
Fleissner_ Otto	89.2.29	A Mountain Lake w/Sailboats	1989	[1966]	india ink_ dry brush
Fleissner_ Otto	89.2.3	Seascape w/ Sailboats	1989		india ink_ wash; brush
Fleissner_ Otto	89.2.30	A Mountain Scene w/ Hut	1989	1966	blue ink_ dry brush_ wash
Fleissner_ Otto	89.2.31	A Mountain Lake w/ Trees	1989		watercolor
Fleissner_ Otto	89.2.32	Blue_ Green)	1989		watercolor
Fleissner_ Otto	89.2.33	Abstraction: Yellow_ Tan_ Orange_ Blue-Green_ Lavender	1989		watercolor
Fleissner_ Otto	89.2.34	Abstraction: Green_ Yellow_ Orange_ Blue_ Lavender	1989		watercolor and ink
Fleissner_ Otto	89.2.35	House amid trees	1989	1932	pencil
Fleissner_ Otto	89.2.36	Sketch of Else [his wife] sketching	1989	1932	blue ink & wash
Fleissner_ Otto	89.2.37	The Rialto_ Venice	1989	1934	brush and ink
Fleissner_ Otto	89.2.38	Four nude women in a wood	1989	1935	brush and ink

Fleissner_ Otto	89.2.39	Country Road	1989	1962	black ink & wash
Fleissner_ Otto	89.2.4	Beach Scene w/Clouds_ Beach Umbrella_ Bathers	1989		india ink_ wash; brush
Fleissner_ Otto	89.2.40	Woodland stream	1989	1933	ink (?) & wash
Fleissner_ Otto	89.2.41	Large Purple Iris (?)	1989	1955	watercolor_ pencil
Fleissner_ Otto	89.2.42	Two Yellow Roses	1989	1955	watercolor_ pencil_ on rice paper
Fleissner_ Otto	89.2.43	A wood or orchard	1989	1933	black watercolor w/grey & tan wash
Fleissner_ Otto	89.2.44	Abstraction (mixed colors_ diagonal lines)	1989	1952	watercolor
Fleissner_ Otto	89.2.45	Abstraction (tans_ greens_ black_ purple)	1989	1962	watercolor
Fleissner_ Otto	89.2.46	Abstraction (rectangles of yellows_ oranges_ blue_ purple)	1989		watercolor
Fleissner_ Otto	89.2.47	Abstraction (many trapezoids of yellows_ oranges_ brown)	1989		watercolor
Fleissner_ Otto	89.2.48	Aurora_ near the mill (HISTORIC INTEREST)	1989	1928	watercolor
Fleissner_ Otto	89.2.49	Autumn trees	1989	1955	watercolor
Fleissner_ Otto	89.2.5	Harbor Scene_ Boats	1989		india ink_ wash; brush
Fleissner_ Otto	89.2.50	Boats and Buildings	1989	1949	watercolor
Fleissner_ Otto	89.2.51	Cityscape: abstraction	1989	1935	watercolor
Fleissner_ Otto	89.2.52	Five Tulips	1989	1955	watercolor
Fleissner_ Otto	89.2.53	Forest stream (?)_ w/rocks	1989	1944	watercolor
Fleissner_ Otto	89.2.54	Head of a woman	1989	1933	watercolor
Fleissner_ Otto	89.2.55	Heads of a man & a woman_ dominating a cityscape	1989	1935	black watercolor
Fleissner_ Otto	89.2.56	Hilly Landscape w/ evergreens (Maine?)	1989	1947	watercolor
Fleissner_ Otto	89.2.57	Landscape w/boats (Maine?)	1989	1943	watercolor
Fleissner_ Otto	89.2.58	Landscape: barns and hills	1989	1943	watercolor
Fleissner_ Otto	89.2.59	Maine woods	1989	1926	watercolor
Fleissner_ Otto	89.2.6	A Cove with Sailboats	1989		india ink_ wash; brush
Fleissner_ Otto	89.2.60	Pink Flowers	1989	1954	watercolor
Fleissner_ Otto	89.2.61	Pink Flowers (Hydrangeas?)	1989	1956	watercolor
Fleissner_ Otto	89.2.62	Reclining figure in overalls_ from rear	1989	1935	black watercolor
Fleissner_ Otto	89.2.63	Rocks_ trees & pond	1989	1949	watercolor
Fleissner_ Otto	89.2.64	Standing female nude_ on shore	1989	1935	watercolor
Fleissner_ Otto	89.2.65	Three nude women_ admiring sailboats	1989	1935	watercolor
Fleissner_ Otto	89.2.66	Three nude women_ one_ large_ reclining in foreground	1989	1933	watercolor
Fleissner_ Otto	89.2.67	Three nude women_ seated in a woods	1989	1933	watercolor
Fleissner_ Otto	89.2.68	Three Red Tulips	1989	1956	watercolor
Fleissner_ Otto	89.2.69	Three Tulips	1989	1955	watercolor
Fleissner_ Otto	89.2.7	Rocky Stream or Pool	1989		india ink_ wash; brush
Fleissner_ Otto	89.2.70	Two Overblown Tulips (?)	1989	1955	watercolor
Fleissner_ Otto	89.2.71	Two Reclining Figures_ Ogunquite_ Me.	1989	1939	watercolor
Fleissner_ Otto	89.2.72	Village w/ Church	1989	1941	black ink (?) w/ wash
Fleissner_ Otto	89.2.8	Rocky Hillside	1989		india ink_ wash; brush
Fleissner_ Otto	89.2.9	Hillside w/Barns	1989		india ink_ wash; brush
Fleissner_ Otto S.	81.4	Aurora Sunset	11/21/81	1959	watercolor
Fleissner_ Otto S.	89.2.73	Landscape w/church near Aurora	1980	1943	watercolor
Fleissner_ Otto S.	89.2.74	Abstraction: square facets in orange_ red_ yellow	2/1980	1961	watercolor
Fleissner_ Otto S.	89.2.75	Lake and hills	1973	1933	watercolor on paper
Fleissner_ Otto S.	89.2.76	Wavebank (house)	1973	1973	pen & ink on paper
Frasconi_ Antonio	*95.149	_Smart_ (poem by Bruce Bennett_ WC prof of Eng)	1980	1978	Exhibition_ 1978

Gruber_ Lois (?)-?or Blocherer ?	89.3.5	Nude Woman (? Lois Gruber ?)		1918	sanguine on thin (? tracing?) paper
Markes_ S	*95.271	Portrait of Helen Phelps Leach			oil
Pattison_ Abbott E.	*95.301	Head of Robert P. Tristram Coffin (1892-1955)	1950?		plaster_ bronzed
Unknown	2017_01	Portrait of Robert P. Tristram Coffin			on Board - ?
Williams_ Richard G.	*95.394	Portrait of Mary Eustis Wightman_ WC 1908			oil on canvas
Roberts_ William	2012.02	Voyage	2012	1977	Acrylic on Canvas
Roberts_William	2012.01	Natural Life	2012	1975	Acrylic on Canvas
Al-Hashimi, Aala - WC 2019	2019.01	Wells College Stagecoach	Feb. 2019	2016	Clay - Ceramic
Alinari (et al.)	*95.3	27 (+ 4) albums: about 2550 prints	1910_ ca. (?)	ca. 1900	albumen prints
Amiet_ Cumo	*95.4	Portrait	1965		lithograph_ 57/200
Anonymous	2007.05	"Scene from a Buddhist Temple"			paper
Anonymous	2008.01	Three men in a boat by moonlight		no date	colored woodcut
Anonymous	2008.02	Moonlit Shore	unknown	no date	Colored woodcut
Anonymous	2008.03	Four sailboats on water in evening	unknown	no date	colored woodcut
Anonymous	76.2	figures; all plates)	April 3, 1976	ca. 1827	etchings of single
Anonymous	2009.01	Navajo Rug_Eye Dazzler	March 2009		Navajo Rug
Anonymous	2009.02	Navajo Rug_Red, blue,black, white	March 2009		Navajo Rug
Anonymous	2009.03	Navajo Rug_Red, gray, black	March 2009		Navajo Rug
Anonymous	2009.04	Gourd with Feathers	March 2009		Southwestern Artifact
Anonymous	2009.05	Kuutimaitsa AAK'U 99/89 (from mold)	March 2009		Southwestern Artifact
Anonymous/Unknown	2007.02	Fighting Elephants Watched by Jahangir			
Arms, John Taylor	2016.01	Wilby Church	NA	1940	etching
Arms, John Taylor	2016.03	Churches	1973	1944	1944
Arms_ John Taylor	88.1.1	Lace in Stone: Rouen Cathedral	1989	1927	etching
Arms_ John Taylor	88.1.2	Stokesay Castle	1989	1942	190/200
Arms_ John Taylor	88.1.3	Stanwick Churchyard	1989	1939	etching
Arms_ John Taylor	88.1.4	Sketch, Grolier Club Library	1989	1941	etching
Arms_ John Taylor	88.1.5	Study in Stone: Cathedral of Orense	1989	1933	etching
Arms_ John Taylor	*95.7	A French Hotel	1973	1923	etching
Arms_ John Taylor	*95.8	The Making of an Etching	1941	1940	etching_ trial proof
Arms_ John Taylor	*95.10	Adam Cafe	1973	1923	etching
Bailey_ Vernon Howe	*95.12	View of Macmillan Hall	1950		pen & ink
Balthus	*95.13	Le Nain	1965		woodcut_ 8/200
Barbash_ Steve	*95.14	Iris # 1	1972 ?	1969	etching_ 9/60
Barbash_ Steve	*95.15	Turtle Turned Up	1987	1972	color etching 9/P
Barnet_ Will	80.1	1972	1980_ Aug.	1972	serigraph
Barney_ Frank A.	*95.18	Skaneateles Lake from Frozen Ocean	1966		oil on board
Barth_ Paul B.	*95.19	Plage	1965		lithograph
Bartolucci-Alfieri_ Pierluigi	*95.20	Peter's	19..		etching
Baskin_ Leonard	*95.21	Man and Dog	1962		woodcut_ artist's proof
Baskin_ Leonard	*95.22	L Della Bella	1962		color etching
Bauer_Karl Konrad Friedrich	2019.03.	Goethe (Johann Wolfgang von Goethe)	NA	1900-1910	Chalk drawing
Bauermeister_ M	80.6	The Art Investment Report	1980		serigraph_ 32/250
Bauermeister_ M	80.7.1	Cancer is a Natural Disease	1980		serigraph_ 119/250
Baum_ Dwight James_ architect	*95.23	Plan for development of WC (campus)_ Aurora on Cayuga	1937	1937	pen_ ink & color
Baur_ Nicholas(Bauer-Nicolaas	30.17	Coastal scene with figures	before 1930	1803	watercolor on paper

Mrs. J. J. Russell)_ WC 1969	*95.24	Purple Afternoon	1969/8/27	1969_ ca	oil on canvas
Becker_ W.	*95.25	Promenade (3 women)	1968	1953	color lithograph_ 3/200
Becker_ W.	*95.26	Promenade (3 women)	1965	1953	color lithograph_ 121/200
	*95.5	Abstraction	1962	1958	color lithograph
Beer_ Doris and Richard	*95.28	Main Street Houses			pencil and watercolor
Beer_ Doris and Richard	*95.29	Squam			pencil and watercolor
Beer_ Doris and Richard	*95.30	Fair Street			pencil and watercolor
Beer_ Doris and Richard	*95.31	Wharf Rat Club			pencil and watercolor
Behrhorst_ Mrs. David	*95.33	Old Barn nr Dean's Cottage	1979_ ca.	1959-60_ ca.	watercolor
Bernard_ Emile	*95.38	Chevalier	1965		litho
Bernard_ Emile	*95.39	Solitude	1965		litho
Bewick_ Thomas	*95.40	The Maggie	?	/printed 1945 b	wood engraving
Bewick_ Thomas	*95.41	Vignette:	?	/printed 1945 b	wood engraving
Bewick_ Thomas	*95.42	Field mouse	?	/printed 1945 b	wood engraving
Bingham_ George C._ (after)	*95.44	Fiat-Boat Men			etching
Blaeu(w)_ Willem (Workshop) (after)	*95.45	adiacentibus (coast of Florida_ central America_ and		1655 (?)	engraving_ hand-colored
Blaeu(w)_ Willem (Workshop) (after) ?	*95.47	and Virginia coastline)	purch by Histor (1655 ?)		engraving_ hand colored
(cutter & printer)	68.1.2	11. S Fabiola	1968		engraving
(cutter & printer)	68.1.3	12. S Paula Romana	1968		engraving
(cutter & printer)	68.1.4	13. S Eustochium	1968		engraving
(cutter & printer)	68.1.5	14. S Marcella	1968		engraving
(cutter & printer)	68.1.6	15. Melania Senior	1968		engraving
(cutter & printer)	68.1.7	16. S Melania Junior	1968		engraving
(cutter & printer)	68.1.8	17. SS Candida et Gelasia	1968		engraving
(cutter & printer)	68.1.9	18. S Syncletica	1968		engraving
(cutter & printer)	68.1.10	19. S Olympias	1968		engraving
(cutter & printer)	68.1.11	2. S Maria Magdalena	1968		engraving
(cutter & printer)	68.1.12	20. S Alexandra	1968		engraving
(cutter & printer)	68.1.13	21. S Magna	1968		engraving
(cutter & printer)	68.1.14	22. S Domnina	1968		engraving
(cutter & printer)	68.1.15	23. SS Marana et Cyra	1968		engraving
(cutter & printer)	68.1.16	24. S Sylvia	1968		engraving
(cutter & printer)	68.1.17	3. S Eugenia	1968		engraving
(cutter & printer)	68.1.18	4. S Euphraxia	1968		engraving
(cutter & printer)	68.1.19	5. S Euphroŝnia	1968		engraving
(cutter & printer)	68.1.20	7. S Thaisis	1968		engraving
(cutter & printer)	68.1.21	8. S Pelagia	1968		engraving
(cutter & printer)	68.1.22	Ascetiarum	1968		engraving
	68.1.1	10. S Marina	1968		engraving
Blum_ A.	*95.50	Coast of Spain_ no. 11			woodcut on paper
Bonnard_ Pierre	*95.52	Jeune fille debout			litho
Bonny_	*95.53	Maternité	1965		etching
Bonny_	*95.54	Maternité	1965		etching
Borès_ Francisco	*95.55	Nude	1965		litho
Borès_ Francisco	*95.56	Nude	1965		litho
Bradshaw_ Glenn	77.6	River Image I	1977		oil on board

Braque_ Georges (after)	*95.59	Head--Du Cubissue	ca. 1960 ?		litho
Brooks_ Frank Leonard	*95.62	Autumn scene: Cayuga Lake	ca. 1956 ?		watercolor on paper
Brooks_ Frank Leonard	*95.60	Winter Landscape		1957	watercolor
Brooks_ Frank Leonard	*95.61	Landscape with buildings and lake			watercolor
Brooks_ Frank Leonard	*95.63	Beach at Mazanillo_ Mexico	1956		watercolor on paper
Browne_ Walter R.	*95.64	Landscape (Lake Cayuga) w/ Streamliner	northb fr lthaca	1954	oil on canvas panel
Bryen_ C.	*95.66	Abstraction	1965		drypoint; V/LX
Bryen_ C.	*95.67	Structure	1965		litho
Buhot_ Felix Hilaire	88.2	Matinée d'Hiver au Quai de l'Hotel-Dieu: The Cabstand	1989	1876_ ca.	etching_ aquatint & drypoint
Buhot_ Felix Hilaire	88.2.2	La Petite Ville	1989	1872	etching
Buhot_ Felix Hilaire	88.2.3	Rain	1989		etching
Buhot_ Felix Hilaire	88.2.4	Summer Street	1989		etching
Callot_ Jacques	*95.73	St. Agapitus Miles_ in prayer	1975		saints of the Year_ (March 24)
Callow_ John	30.2	A churchyard_ w/ small church seen from northeast	before 1930		watercolor
Cariguet_ A.	*95.74	Oiseau	1965		litho_ 138/200
Carra_ Carlo	*95.75	Personnages (2 women)	1965		litho_ 36/200
Carra_ Carlo	*95.76	The White Horse (still life)			litho
Carra_ Carlo	*95.77	Woman's Portrait	1962		litho
Carra_ Carlo		unknown			etching
Chagall_ Marc	2003.01	La Grand Cirque (The Big Circus)	NA	1956	Lithograph
Chikamaro_ Kyosai	2019.04	Places along the Tokaido			Colored woodcut
Corinth_ Lovis	*95.91	Still life (flowers in a vase)	ca. 1960?		drypoint etching
X1920 (after?)	88	'1920)	1989	1921	oil on canvas
X1920 (after?)	88.12	Yesterday_	1988	1918 or 1920	pen_ ink & wash
X1920 (after?)	88.11	Still life of fruit and bottle	1988	ca. 1916	watercolor
X1920 (after?)	88.14	The Nike of Samothrace	1988	1929 (?)_ some	watercolor
X1920 (after?)	88.15	Dean Jr.	1988	1922	pencil
X1920 (after?)	*95.92	_ Shatter the fetters_	ca. 1930 ?		crouching fig in chains at back
Cruikshank_ George G.	*95.93	The _Corps de Ballet_ (interior w/dancing furniture	1975	ca. 1868	for _Demonology and Witchcraft_
Cunningham_ Imogen	*95.94	Portrait of Roi Partridge_ w/(lost) etching in background	19--	ca. 1915	photo
Currier & Ives	*95.95	American Railroad Scene			litho
Currier & Ives	*95.96	View of Federal Hall_ City of N.Y._ 1797			litho
Currier & Ives	*95.97	State Street_ Boston			litho_ hand-colored
Currier & Ives	*95.98	Government House_ New York_ 1790			litho
Currier & Ives	*95.99	Landing of American Forces under Gen. Scott		ca. 1849 ?	litho
Currier_ Nathaniel	*95.100	The Great Riot at the Astor Place Opera House	1973	1849	handcolored litho
Dali_ Salvador	*95.101	Deux _Fratasies_		1963	etching; 67/85
Dalmas_ Priscilla Ogden_ WC 1921	77.3	Anemones	1977	ca. 1970	watercolor on paper
Daumier_ Honoré	81.3	Les bas bleus_ no. 23	1981		imp. d. Aubert & Cie.
Daumier_ Honoré	*95.103	Un Oculiste Bréveté	ca. 1975		litho
Davis_ Jean Scobie	2002.02	Untitled	2002		
DeHaven_ Franklin	*95.107	Landscape w/pond		1891	oil on canvas
Dehner_ Walt	*95.108	green hills in background		1939	watercolor
Derain_ André	*95.109	Nude			litho
Dienes_ W.	*95.110	Profile		1930	woodcut
Dighimont	*95.111	Soldier and girl	1965		litho

Dillingham_ Dorothy Hoyt	*95.112	Abstraction, also titled "Flux" on verso of painting	ca. 1970?	1954-57	verso of painting, Lacquer wash on
Dix_ Otto	*95.113	The Blind Man	1962		litho
Dubrevil_ Pierre	*95.115	Illustration from _Alternace_			etching
Dubuffet_ Jean	*95.116	Les Murs	1962		litho
Dufy_ Raoul	*95.117	Birds in a Cage	1968		etching
Dufy_ Raoul	*95.118	Leaf patterns	1967		etching
Dufy_ Raoul	*95.119	Poppies	1967		etching
Dufy_ Raoul (atelier)	*95.124	Birds in a Cage	1968		etching
Dufy_ Raoul (atelier)	*95.126	Poppies	1967		etching
E. Kiskim	99.17	Oswego	1999	1980	Watercolor
Edmondson_ Leonard	*95.130	Signs and Manifestations		1953	color etching_ 30/50
publishers	*95.139	The Meeting of the Federal Congress_ July 4 1776			wood engraving_ hand-colored
Estève_ Maurice	*95.141	Matinaillies			color litho
Fiene_ Ernst(Ernest)	*95.143	Snow scene	1970_ ca.		litho
Fink_ Herbert	83.1	Homage to the Old Man	1983	1982	etching; 9/250
Foujita_ Tsuguharu	*95.145	Self Portrait			etching
Fournier_ Gabriel	*95.146	(Three) Nudes and sleeping fig	1968		color litho
Frasconi_ Antonio	*95.148	Self Portrait	1968	1961	litho
Friesz_ Emile Orthon	*95.151	Female Figures	before 1930		litho
Friesz_ Emile Orthon	*95.152	Indecision	1965		litho
Friesz_ Emile Orthon	*95.153	Nymphes	1965		litho
Fullwood_ John_ F.S.A.	*95.154	By the Seine	1968		etching; /300
Gág_ Wanda	*95.157	Spring	before 1930		litho
Gainsborough_ Thomas (attr.)	30.6	Landscape w/ 3 cows & shepherd	before 1930		pencil & wash
Galanis	*95.155	Tuileries	1965		etching
Ganso_ Emil	*95.156	Central Park Bridge	before 1930	ca. 1925	aquatint and roulette
Genis_ Rene	*95.158	Boats	1968		litho
Gimi	*95.160	Le Bain	1965		litho 86/200
Goerg_ Edouard Joseph	*95.163	Les 3 Visages	1968		272/950
Gough_ Robert Alan	77.1	Owl Creek Winter	1977	1969	oil on canvas
Grau-Sala_ Emilio(Emile)	*95.169	Madame DE	1968		litho
Grau-Sala_ Emilio(Emile)	*95.170	Madame DE	1968		litho
Grooms_ Red	80.7.2	Mango Mango	1980	1973	41/250
Gross_ Anthony	*95.171	Landscape in yellow	1965		color etching; IV/XL
Grosz_ George	*95.172	Figure w/Skeleton			litho
Haass_ Terry	*95.176				color etching_ 18/35
Haden_ Seymour(Francis Seymour, Sir)	*95.177	Battersea Beach	before 1930		etching
Hamersma_ Cyril	*95.178	Metaphysical Cell Structure _M_ No. 58	1975	1975	india ink on paper
Hardy_ Thomas Bush	30.1	Kalwijk-van-Zee	before 1930		watercolor
Harper_ Charles	*95.184	Aurora Inn		1950s	gouache
Hayter_ William Stanley	*95.188	Danae		1952	color litho
Hecht_ Joseph	*95.189	Cerf	1965		woodcut
Heinsbergen_ A[nthony]. B.	77.11	_Harbor of Polperro_ Cornwall_ England_	1977		oil on canvas
Hine_ Harry G.	30.15	Snowden: view of glassy lake_ boat_ 2 fishermen & in distance the mountain	before 1930		watercolor

Hiroshige_ Ando	*95.190	_Suma_ (Moonlight scene on a beach)	before 1930		colored (?) woodcut
Hiroshige_ Ando	*95.191	Shiba Shrine: #32 of The 48 Famous places of [Y]Edo [Tokyo]			colored woodcut
Hiroshige_ Ando	*95.192	Snow scene in mountain village (Kambara): 16th station (stage) of the 53 stations of the Tokaido	1976	1834 for Tokka	colored woodcut
Hiroshige_ Ando	*95.193	Kanda Shrine: #7 of The 48 Famous places of [Y]Edo [Tokyo]			colored woodcut
Hiroshige_ Ando	*95.194	Procession crossing a bridge			colored woodcut_ late impression;
Hobbs_ Morris Henry	88.18	Sara [seated nude_ face averted]	1988		publisher Jusaburo
Hogarth_ William	*95.195	Rake's Progress_ #7:	1969		etching
Hollar_ Wenzel (Wenceslaus)	*95.196	Sister of the Order of St. Clare	3/3/83	1663	engraving etching
Hunt_ Cecil A.	30.14	Clouds on Ben Lui	before 1930		pastel & chalk on paper
Hunt_ Richard	*95.198	Ravinia Print	1973		litho_ 48/200
Hunt_ Richard	*95.199	Study for an abstract sculpture	1967		litho
Inagata_ Menjire	*95.202	View of the Gardens at Hotel Fijiya			color woodcut
J.J. Audubon	2007.03	Cardinal Grosbeak - Fringilia Cardinalis			Engraving
J.J. Audubon	2007.04	Clember Jay - Garrulus Ultramarinus			Hand-colored Engraving
Kellogg_ E[dmund]. B[urke]. and E[lijah]. C[hapman]. & Co.	*95.207	John Quincy Adams			Hand-colored litho; from the life of William H. Brown
Kellogg_ E[dmund]. B[urke]. and E[lijah]. C[hapman]. & Co.	*95.208	Martin van Buren			litho; from the life of William H. Brown
Kellogg_ E[dmund]. B[urke]. and E[lijah]. C[hapman]. & Co.	*95.206	DeWitt Clinton			litho; from the life of William H. Brown
Kennedy_ Clarence	76.3a	Tomb of the Cardinal of Portugal (detail)	1976		photograph; IV from Hartt_ Kennedy
Kokoschka_ Oscar	*95.218	The Fear and the Hope; illus fr _Bach Kantate_	1962		litho
Kollwitz_ Kaethe	*95.219	Inspiration	1968		etching; restrike
Kremz-Böhm_ T	*95.220	Palazzo Ducale_ Venice	1987		etching
Krol_ Abram	*95.221	Chevreuils	1965		burin
Krol_ Abram	*95.222	Deer	1968		burin
Krol_ Abram		Chevreuils	1965		burin
Krushenick_ Nicholas	*95.224	James Bond meets Pussy Galore	1967	1964	color serigraph_ from _New York Ten_
Kunichika_ Toyohara	*95.225	Three kabuki actors in summer kimonos	1968		woodcut (triptych)

Kuniyoshi_ Utawaga	*95.226	Diptych: lady at a screen			colored woodcut; publisher: Sansaburo
Kuniyoshi_ Utawaga	*95.227	Diptych: servant at a screen			colored woodcut; publisher: Sansaburo
Kwasson	*95.228	_Sunset at Kominato_	before 1930		colored (?) woodcut
Kyosai Kawanabe	*95.229	Theatre interior w/ cheering audience & actor performing lion dance_ musicians			colored woodcut
Lapique_ Charles	*95.245	Courses	1965		color litho_ 68/200
Larson_ Jens F.	*95.247	Proposed Weld Dormitory_ WC			pen & ink
Lawson_ Robert	*95.248	Centaur and Maiden			etching
Lee_ Howard	*95.250	Tree out - in Willow		1958	photo print
Lee_ Howard	*95.251	The Hustlers_Brig-----Nat. Wildlife Refuge	gift	1958	photo print
Leger_ Fernand	*95.252	Accordian			color litho
Leighton_ Clare	*95.253	At the Organ	1968		wood engraving_ 9/30
Leighton_ Clare	*95.254	Horses pulling a wagon	1968		wood engraving
Leighton_ Clare	*95.255	Landscape w/ trees	1968		wood engraving
Leighton_ Clare	*95.256	Wedding Bells	1968		wood engraving
Leighton_ Clare	*95.259	Winter Landscape	1968		wood engraving
Leighton_ Clare	*95.260	Young Ferns	1968		wood engraving
Leitch_ W. L.	30.4	Bernese Alps	before 1930		watercolor & crayon
Leopold_ Levy	*95.262	Paysage 20/200	1965		drypoint ?? (silkscreen ?)
Levin_ Jeanne Lewenthal_ WC 1923 (Mrs. Isidore)	78.1	Pirouette (non-objective)	1978		acrylic on canvas
Levin_ Jeanne Lewenthal_ WC 1923 (Mrs. Isidore)	*95.261	Purple Slash	1977	1970	oil on canvas
Long_ Robert	77.4	Mexican Fountain	1977	1967	oil
Loutherbourg_ P[hilip].J[ames]. de_ the Younger	30.16	Coast scene	before 1930		watercolor
Manceau_ J. P. de	*95.266	Bombardiers Amidships			wood engraving
Manceau_ J. P. de	*95.267	Man-of-War underway			wood engraving

Mandell_ Samuel D.	*95.268	Wells Seminary (Old Main) Historical value.	No date	ca. 1868 ?	pen & ink Schematic drawing of how light will hit the facade of the bldg.,(Old Main) circa 1866-1868
Manning_ Wray	*95.269	Macmillan Hall w/ two graduates in right foreground			watercolor
Margules_ Victor (?) Maseerel_ Franz	*95.270 *95.273	Seated woman Fleur	1965		pen & india ink with brown wash woodcut
Mauri	*95.277	photos_ Naples	1910_ ca. (?)	ca. 1900	8 x 10 albumen
Meninsky_ Bernard	30.13	_Polish Girl_ (Head of a Woman)	before 1930	1925	pastel on paper
Miller_ Algernon Minaux_ André	*95.278 *95.280	Third World Tree Hayfield	1971 1965	1970	polychromatic monolithic geometric painting on wood litho 22/200
Misonne_ Leonard	*95.281	Gilly_Belgique	1968	1923	copy of photograph
Monso (?)_ Sydney (?) Morgan_ Edith Pierpont Morris_ Jan	*95.282 30.3 77.3	Profile of a Woman looking left (? Elizabeth Barrett Browning? George Eliot?) In the Alps (glacier on mountainside) Colorado scene	before 1930 1977	ca. 1850	bronze relief (tondo) watercolor
Müller_ William J. Nakayana_ T	30.11 *95.286	Tropic Landscape (landscape w/ man) Wind Stirring	before 1930 1959	1958	gouache woodcut; 1/50
Niemela_ Lorraine Lang WC 1964 Ogden_ Priscilla: see Dalmas Onchi_ Koshiro	2016.02 *95.288 *95.290	Main Building from the Front Lawn Poem #22: Leaves and Clouds	7/28/2016 1959	1960's - 1970's	water color woodcut
P[ease]_ H[enry?].W. Palmer_ Erastus Dow	*95.320 *95.295	Aurora_ N.Y. from _North Poplars_ Morning (Star)	1978	1848 ca. 1850	litho_ hand colored plaster
Partridge, Roi	23.10K	Two Trees [A], 1920	1923	1920	Etching on steel-faced copper
Partridge_ Roi	23.1	Al Bordo del Campo	1923	1922	etching on steel-faced copper.
Partridge_ Roi Partridge_ Roi Partridge_ Roi	23.1 23.101 23.102	Winged Victory Winter Blossoms Zuni	1923 1923 ?	1919 1913 1926-27	etching (?)_ on blue-green paper etching etching
Partridge_ Roi	23.10a	Design for a Bookplate, 1913	1923	1913	etching on zinc
Partridge_ Roi	23.10b	Bookplate: Design for an Ex Libris: F.H.	1923	1913	

Partridge_Roi	23.10c	Bookplate:A. Clare Shepard_ Muenchen	1923	1912	
Partridge_Roi	23.10d	Bookplate: From the Library of Paul Coates Harper	1923	1919	
Partridge_Roi	23.10e-i	Christmas Cards (1917-18_ 1919_ 1920_ 1921 [?]): for Mr. and Mrs. Paul Harper	1923	1919	
Partridge_Roi	23.11	Buena Vista(The Pines), 1920-1921	1923	1920	etching on copper 6th trial print
Partridge_Roi	23.12	California Coast 1924-1925	1925	1924-25	Etching on zinc State II
Partridge_Roi	23.13	California Farm_ A	1923	1919	drypoint_ _3rd trial state_ 3 prints out_
Partridge_Roi	23.15	Carmel?ja	1923	1921	etching_ _1st trial state
Partridge_Roi	23.16	Catalogues_ Stanford	?	1927	etching_ _4th trial proof
Partridge_Roi	23.17	Cloud_ The	1923	1916	etching (50 print limit)
Partridge_Roi	23.18	Dancing Water (Pont Neuf_ Paris_ looking toward the Ile de la Cité)	1923	1911	etching_ _on Brangwyn paper
Partridge_Roi	23.19	Del's Crag	1923	1919-20	etching
Partridge_Roi	23.2	Ambition Bound	1923	1914	etching on zinc
Partridge_Roi	23.2	Desert Souvenir, 1924-1925	?	1924	etching on zinc
Partridge_Roi	23.21	The Dome, 1919-1920	1923	1920	drypoint on zinc
Partridge_Roi	23.22	Early Morning--Notre Dame	1923	1911-12	drypoint
Partridge_Roi	23.24	El Campo Santo	1923	1923	etching
Partridge_Roi	23.25	Equality and the Beggar Girl	1923	1914	etching
Partridge_Roi	23.26	Fish Docks	1923	1921	etching
Partridge_Roi	23.27	43 Wall Street	1923	1914	etching
Partridge_Roi	23.28	From my Window	1923	1919	etching_ _2nd trial proof
Partridge_Roi	23.29	Grey Bridge	1923	1914-15	etching
Partridge_Roi	23.3	Grupos de Arboles	1923	1922	etching
Partridge_Roi	23.19a	Hayfields	1923	1919	drypoint on zinc_ 2nd trial proof
Partridge_Roi	23.32	Hillside Quarry	1923	1919	etching
Partridge_Roi	23.33	Hobart Mills	?	1924	etching
Partridge_Roi	23.34	House in Hessia_ A	1923	1913	etching
Partridge_Roi	23.35	House of Alvarado_ A	1923	1921	etching on steel-faced copper.

Partridge_ Roi	23.36	The Hut in the Clearing, 1914	1923	1914	etching on brass Japanese vellum paper; 48/50
Partridge_ Roi	23.37	The Idle Crane, 1921-1922	1923	1921	etching on copper_1st state
Partridge_ Roi	23.38	In a Robe of Mist	1923	1915	
Partridge_ Roi	23.39	Lace from Paris	1923	1914	etching
Partridge_ Roi	23.4	Arches_ Stanford	?	1927	etching
Partridge_ Roi	23.4	Lagunita_ the Lake at Stanford_ Stanford	?	1927	etching
Partridge_ Roi	23.41	L'Annonciation	1923	1914	etching on copper (10 prints w/ perhaps 2 or 3 trial prints)
Partridge_ Roi	23.42	La Maison Blanche	1923	1913	etching
Partridge_ Roi	23.43	La Porte de Moret, 1913	1923	1913	etching on zinc 30-50 prints limit_
Partridge_ Roi	23.44	Las G[S?]omas	1923	1921	drypoint_ 4th trial proof
Partridge_ Roi	23.45	Le Louvre_ No. 3	1923	1913	etching on copper ; early state.
Partridge_ Roi	23.46	Le Pont de la Tournelle	1923	1911	etching
Partridge_ Roi	23.49	Library at Stanford_ The	?	1927	etching
Partridge_ Roi	23.5	Architectural Study	?	1926	etching on zinc
Partridge_ Roi	23.5	L'Ile de la Cité	1923	1913	etching
Partridge_ Roi	23.51	Live Oak and Orange	1923	1921	drypoint on copper-and steel-faced zinc
Partridge_ Roi	23.52	Lone Pine	1923	1921	etching on steel-faced copper.
Partridge_ Roi	23.53	Los Cerros_ Santa Barbara	1923	1922	etching on copper
Partridge_ Roi	23.54	Marvelous Mountain_ The	1923	1915	etching; 50 print limit
Partridge_ Roi	23.55	Mezzotint: Self-portrait	1923	1911	etching; trial proof
Partridge_ Roi	23.56	Mills Hall	1923	1921	etching
Partridge_ Roi	23.57	New York Public Library	1923	1914	etching; 50 print limit
Partridge_ Roi	23.58	North Coast	?	1926	etching
Partridge_ Roi	23.59	Notre Dame	1923	1914	etching
Partridge_ Roi	23.6	Aspen and Spruce (later called Aspen and Fir)	?	1924	etching
Partridge_ Roi	23.6	Open Road_ The	?	1924	etching
Partridge_ Roi	23.61	Out West	1923	1923	etching

Partridge_ Roi	23.62	Over the Seine	1923	1912	etching on zinc
Partridge_ Roi	23.63	Playhouse by the Willows_ The	1923	1923	etching
Partridge_ Roi	23.64	Pollard Willows_ 1923-24	1923	1923	etching on copper
Partridge_ Roi	23.65	Le Pont Neuf	1923	1911	etching
Partridge_ Roi	23.66	Portrait of J[ohn]. B[uttler]_ München	1923	1911	etching
Partridge_ Roi	23.67	River Bottom	?	1926	etching_ 9th trial proof
Partridge_ Roi	23.68	Rock Shadow	?	1926	etching
Partridge_ Roi	23.69	St. Cloud	1923	1914	etching on copper (? 1930 cat says dry point)
Partridge_ Roi	23.7	Aspenland	?	1924	etching
Partridge_ Roi	23.7	Sandstone and Laurel_ Stanford	?	1927	etching
Partridge_ Roi	23.71	Santa Fe Shanties (Hillsides)	?	1926	etching
Partridge_ Roi	23.72	Santa Rosita	1923	1923	etching
Partridge_ Roi	23.73	Seal of the University of Washington	1923	1915	etching
Partridge_ Roi	23.74	Shuksan (Northern Washington in July)	?	1927	etching
Partridge_ Roi	23.75	Sierra Shanties	1923	1923-24	etching
Partridge_ Roi	23.76	Sierra Sketch	1923	1921	etching
Partridge_ Roi	23.77	Sierra Skyline	?	1924	etching_ 1st state_ w/ _Lone Pine_ 1924_ in plate
Partridge_ Roi	23.78	Sierra Slopes	1923	1923	etching
Partridge_ Roi	23.79	Snow	1923	1923_ Dec. 1	etching
Partridge_ Roi	23.8	Beggar Girl of Frankfort	1923	1913	etching on steel-faced copper.
Partridge_ Roi	23.8	Snowfields	?	1927	etching
Partridge_ Roi	23.81	Sycamore and 'Dobe	1923	1922	drypoint_ 1st trial proof
Partridge_ Roi	23.82	Takhoma	1923	1916-17	etching_ 50 print limit
Partridge_ Roi	23.83	Tamalpais(Aged Eucalyptus), 1919	1923	1919	drypoint on zinc 5th trial proof (plate ruined in facing)
Partridge_ Roi	23.84	Tanagra and Marguerite	1923	1914	etching on steel-faced copper.
Partridge_ Roi	23.85	Tatoosh Range_ The	1923	1916	etching_ 50 print limit
Partridge_ Roi	23.86	Three pines_ The	1923	1922	etching
Partridge_ Roi	23.87	Valley Road	?	1925	etching
Partridge_ Roi	23.88	Veil_ The	1923	1911	etching
Partridge_ Roi	23.89	Wandering Willows	?	1925	etching
Partridge_ Roi	23.9	Water Willows	1940	1934-38	etching on copper State II

Partridge_ Roi	23.91	Webs of Commerce	1915	1915	etching_ 50 print limit
Partridge_ Roi	23.92	White Butterfly	1923	1912	etching
Partridge_ Roi	23.93	Willow Pattern	1923	1923	drypoint
Partridge_ Roi	23.94	Willow Pool_ #1	1923	1922-23	drypoint
Partridge_ Roi	23.95	Willow Pool_ #2	1923	1922-23	drypoint
Partridge_ Roi	23.96	Willow Shade	1923	1923	etching
Partridge_ Roi	23.97	Willowland	?	1924-26	etching
Partridge_ Roi	23.98	Willows	1923	1923	etching on copper
Partridge_ Roi	23.99	Willows by the Spring	1923	1923	etching on copper-and-steel- faced zinc. State I
Partridge_ Roi	23.10L	Alcatraz Island[A], 1919	1923	1919	Etching on copper
Pearce_ Anne Elizabeth_ WC 1934	*95.302	Glen Park	1960		watercolor
Pearson_ Henry	*95.303	Banner (wall hanging)_ shades of blue	1969		felt_ 13/20
Peter Sawyer	99.18	Main Building			Water Color
Picasso_ Pablo (in the style of)	2018.01	La Ronde de la Jeunesse (The Youth Circle)	NA	2.7.1959	Colored lithograph
Pinczuk (?)_ N.	91.2	Wharf (? New England)	1991		oil on canvas
Plowman_ George Taylor	*95.309	Wells College: Glen Park	before 1930		etching
Plowman_ George Taylor	*95.311	Main Building_ Wells College	1927-28		etching
Plowman_ George Taylor	*95.314	Wells College: Macmillan			litho
Plowman_ George Taylor	2008.05	Wells College _ Glen Park_ Home of Henry Wells	8/2008	cr. 1911-12	etching
Plowman_ George Taylor	*95.310	Chamonix_ France	before 1930		aquatint and etching
Plowman_ George Taylor	*95.312	Beethoven's Birthplace_ Bonn	ca. 1970 ?		etching
Plowman_ George Taylor	*95.313	Hotel de Sens_ Paris			etching
Plowman_ George Taylor	*95.315	Lithograph stone_ w/ drawing of La Salute_ Venice	1927	1927	stone_ litho crayon
Poncel_ Jean	*95.316	Dilemme	1965		litho 25/200
Prassinios_ Mario	*95.319	Corbeau	1965		litho 21/200
Pyne_ J. B.	30.8	Tintern Abbey	before 1930		watercolor
R. Gaywood, fecit P Stent, Excudit Reni_Guido _ (Copy)	08-01 96.1	John Gvtemberg of Mentz a city in Germany, The first inventor of Printing, Ano Dom 1442: as you may Read at Larg in the Liues of Plutarke Aurora_ (19th century copy)	No date	ca. 1830 ?	Etching Oil on canvas
Richter_ Martha Burchfield	2019.02		3/2019		watercolor on paper
Rigaud_ T (?after)	*95.322	View of Paris w/ Notre Dame (Autre vue Particuliere de Paris depuis Notre Dame jusques au Pont de la Tournelle)			engraving (?)
Rigaud_ T (?after)	*95.323	View of Paris w/ Town Hall (Vue de l'Hotel de Ville de Paris)			engraving (?)
Rinehart_ W. H.	*95.324	photograph of sculpture (angel kneeling at a font)	1973		
Rise_ Rutte Starr	*95.325	Christmas Gift		1939	litho
Rivera_ Diego	*95.326	Mother and Child _Two Girls_			litho

Robertas_ Nicholas	2015.3	Recueil Des Fleurs or Collection of Flowers	no date	1673	Hand-colored copper-plate engraving
Roberts_ Nicholas	2015.2	Recueil Des Fleurs or Collection of Flowers	no date	1673	Hand-colored copper-plate engraving
Robertson	*95.329	Proposed Design for Dodge	1964_ ca.	1964	gouache on board
Robinson_ C. S.	*95.330	Aerial view of Wells College in the late 1930s		ca. 1938	photo
Rose_ Iver I.	77.9	After the Storm (boat beached_ women watching)	1977		oil on board
Rosenblum_ S	*95.335	The Meeting (six children)	1974		oil on board
Rosenblum_ S	*95.336	Untitled (three women from back)	1965?;1974		oil on board
Ross ?	88.21	Vue de Saint Malo	1988	1647	engraving_ handcolored
Rossingol ?	88.22	Cy est le vray pourtrait naturel de la ville, cite, universite de Paris, 1576 [map of Paris w/ pictorial additions, cross-section of city as lower border]	1988	1576	? litho repro of engraving (page from a book ?)_ handcolored
Rouault_ Georges	*95.337	Ballet Dancer_ half length	ca. 1970		litho ?
Rouault_ Georges	*95.338	Christ and Two Thieves crucified			wood engraving; illustration from _Le Passion_
Rouault_ Georges	*95.339	Crucifixion (Jesus will Anguish till the End of Time)			litho
Ruthling, Ford		The Loaves and the Fishes			
Ruthling, Ford		Four & Twenty Blackbirds			
Ruthling, Ford		The Four Cardinal Directions and Indications of Difficulty			
Ruthling, Ford		Getting to Them			
Ruthling, Ford		Speak to me of			
Ruthling, Ford		Apples			
Ruthling, Ford		Cows have an Inner Light			
Ruzicka_ Rudolf	78.3	Bookplate: House by a bay_ w/ caption: Tout le monde me reconnoist en mon live & mon livre en moy	1978	1925	colored litho
Ryan_ Lewis Carleton	*95.343	San Gabriel Valley. 4	1973		colored block print
Sekino_ Jun-ichiro	*95.348	Plum (Head of a girl)	1959		woodcut; 55/100
Shikimaro (?) Kyosai	*95.351	Imperial (?) procession passing a farmhouse			colored woodcut
Shinagawa_ Takumi	*95.353	Abstraction		1954	serigraph
Shopen_ Kenneth	*95.354	Mud Hen and Tweepers	1964	1959	Acrylic on board
Soderberg_ Y E	*95.356	Appleblossoms			watercolor
Sommer_ Giorgio	*95.357	photos_ Naples: social views_ costumes_ beggars (?)	1910_ ca. (?)	ca. 1900	8 x 10 albumen prints_ hand colored

Spence_ T. Everard (Toby)	86.1	View of Main_ Wells College_ from Paine's Creek	T. Everard Spe 1976		oil on canvas
Spence_ T. Everard (Toby)	*95.358	View of Main_ Wells College_ from east Daffodils & Stone Steps (Lawn to the right of Smith Hall/Sommer Center)	1986	1986	oil on canvas
Standfast Wright_ Susan WC 1957	2008.5		no date		Photograph_ Color
Standfast Wright_ Susan WC1957	2008.1	Dogwood Trees at Macmillan Hall	no date		Photograph_ Color
Standfast Wright_ Susan WC1957	2008.2	Main Building(South Side) in Autumn	no date		Photograph_ Color
Standfast Wright_ Susan WC1957	2008.3	Sunset on Cayuga Lake	no date		Photograph_ Color
Standfast Wright_ Susan WC1957	2008.6	Macmillan Hall	no date		Photograph_ Color
Standfast Wright_ Susan WC1957	2008.7	Autumn and Cayuga Lake	no date		
Standfast Wright_ Susan WC1957	2008.4	Winter Scene-Cayuga Lake, Dock and Corner of Boathouse	no date		Photograph_ Color
Stauffer_ Edna Pennypacker_ x WC 1904	*95.359	Bird of the Hurricane--Gulf of Mexico			litho
Stauffer_ Edna Pennypacker_ x WC 1904	*95.360	Lady Nicotine Blessing the Tobacco Lewis Henry Morgan Birthplace_ Ledyard_ N.Y. (Irving property)			litho
Steinhilber_ Walter	*95.361		1985	1951	watercolor
Stotz_ Charles M.	*95.363	Dormitory Building_ Wells College [Leach]			
Stotz_ Charles M._ and Edward Strang_ W.	*95.364 *95.365	Proposed Health Center Herdsman	before 1930	1882	black & colored ink on Banbridge board etching
Strong, Nancy WC1952	99.15	Frances Folsom Cleveland Library-Front Entrance		?1952	Pen and ink
Strong_ Nancy WC1952	99.13	Glen Park and Bridge		?1952	Pen and ink
Strong_ Nancy WC1952	99.14	Zabriskie Hall-Front Entrance		?1952	Pen and ink
Talcoat_ Pierre	*95.367	Automne	1965		
Teretchkovitch_ Kostis	*95.368		1965	1965	litho
Terrett_ Mildred_ WC 1904	*95.369	Cape Ann	1954		watercolor
Toyokuni III (Kunisada_ Utawaga)	76.36	central panel of a triptych (scene from a drama):two men & a woman in a rainstorm			colored woodcut
Toyokuni III, Utawaga	76.36	left panel of a triptych (scene from a drama): elegant couple & peasant w/potted plants			colored woodcut
Toyokuni III, Utawaga	*95.371	Man capturing another man_ and burning a letter in a candle (? scene from drama ?)			colored woodcut
Toyokuni III, Utawaga	*95.372	Calligrapher watching a Thunderstorm (? writing a _Storm poem_ ?)			colored woodcut
Toyokuni III, Utawaga	*95.374	Two Actors by a Tree			colored woodcut
Toyokuni III, Utawaga	*95.375	Woman carrying lacquer box (? half of a diptych ?)			colored woodcut

Toyokuni III,Utagawa	*95.373	central panel of a triptych: boating scene			colored woodcut
Toyokuni_ School of	*95.376	Theatre Poster: Man w/ Sake Cup_ Woman w/Bottle			colored woodcut
Toyokuni_ School of Tucker_ Allen	*95.377 *95.379	Procession approaching over a Bridge [in Yedo] Life-Saving Station			colored woodcut watercolor
Unknown	2008.01	Graduating Senior on Wells Stagecoach			Oil on board
Unknown	2000.01	Portrait of a Musician (May not be actual title)			Oil on canvas
Vasareli_ Victor	*95.381	Poster before lettering	1969		serigraph_ /200
Vaughan_ Keith	*95.382	Walled Garden			litho
Vautier_ Benjamin	*95.383	La Loge	1965		litho
Velle_ F.	88.19	Miniature pseudo-Egyptian erotic/pornographic frieze_ in two registers	1988		gouache (?) & ink on papyrus
Verdier_ Maurice	*95.384	Notre Dame	1965		litho_ 2/175 (?)
Vernebar_ Carle	*95.385	Les accidents de la route			color litho
Vuillard_ Jean Edouard	*95.388	Le Repas	1970 ca.		litho
Whistler_ J. A. M.	*95.391	Portrait of Drouet_ the Sculptor	1927-28		etching
White, Jack	2007.01	Ancestral Learning #215		1999	Acrylic canvas, copper and wood
White_ Jack	*95.390	Untitled	1975	1975	mixed media on chipboard
Wiles_ Irving R. (after)	*95.393	Portrait of Nicholas Lansing Zabriskie		1920	oil on canvas
Wilson_ Dorothy Gilbert_ WC 1913	*95.395	Winter Scene	1939	ca. 1920	oil
Wimperis_ E. M.	30.1	Cloud of Summer	before 1930		watercolor
Winburn_ Jay Te	88.13	Studio portrait of Josenia Elizabeth Larter_ WC X1920 (after?)	1988	ca. 1920_ 21	photo
Wyman_ M. A.	*95.397	Portrait of a Bearded Man (not Henry Wells)			oil
Yaskisade_ Hodaka	*95.398	Kite 59			color woodcut_ 37/50
Yoshida_ Hodaka	*95.399	Prey	1959	1958	woodcut; 4/50
Young_ (Charles) Jac	68.1.23	Where Memories Linger (winter landscape)	1968	1968	etching
Zox_ Larry	*95.401	Diamond Drill	1971		color serigraph (black/purple); 7/75
Zuniga_ F.	80.9 91.1 *95.276	Woman with Sphere Paris Street Scene 1911/12-	1980 1991 AER_ Macmilla	1974 ca. 1960	serigraph (?)_ 278/300 oil on canvas color litho; artis Excitation
Kellogg_ E[dmund]. B[urke]. and E[lisah]. C[hapman]. & Co.	*95.205	Daniel Webster			litho; from the life of William H. Brown

ITEMS FROM FORMER WELLS MUSEUM COLLECTION FOR AUCTION

based on most recent College inventory of collection, 1973

Item	Donor	Description
Ankh	A. Leffingwell	Egyptian symbol of life. Found in tomb near Mt. Carmel (Phoenicia). Bone? 2" long.
Arrowheads, Spearpoints, Axeheads	Ms. P. VanOrden	5 spearpoints - flint, av. length 3-4"; flint, 11 arrowheads - mostly flint, 1 obsidian, av. length 2"; 1 clubhead - dark stone, about 4" in length
Bags (2)	A. Leffingwell	Japanese, made of a coarse blue cloth with black writing on the front. Larger: 15 1/2" x 11 1/2", smaller: 16 1/4" x 8 1/2"
Bas-relief	A. Leffingwell	2 pieces. Smaller piece: rough, cement like stone, red paint on flat side. About 2 1/4" long. Large piece: Man's back and part of his white loin cloth. White background. On back in pencil: "Fragment from Abydos -- 4000 yrs old. Long Is. Hist. Soc., Brooklyn, N.Y." other parts unreadable. 7" x 1 3/4"
Beads	A. Leffingwell	Long and small beads. Threaded on some sort of thread. Predominant color is green. Ball of colored linen joining ends of necklace. Necklace broken. From Thebes--the Great Pyramid. Obtained Jan. 1890.
Bell	A. Leffingwell	From Kioto, Japan. Handle is bronze, the rest of the bell is brass. Some decoration. Handle loose. 5 1/4" high; 2 9/16" in diameter. On the side is carved: "Japan Oct. 1881 Brought from Kioto Albert Leffingwell, Aurora, N.Y."
Bell	A. Leffingwell	Brass, 2 7/8" high, 2 1/8" in "diameter". Bottom of bell not regular circle.
Bottles	Morgan, Leffingwell, Lovett, Martin	For perfume. 11 bottles on display. Various sizes, shapes, colors -- beautiful glass. Small, round, embroidered. 2 1/4" in diameter, 7/8" high. Bottom: Papered: paper has pink flowers. Inside: Same paper. Sides: Different colored patches of material glued on. Top: Red flower glued on dull background.
Box	A. Leffingwell	Bamboo, top has patterns of inlaid bamboo. In good condition. Inside top is written: "Presented to me, Oct. 1881 by the Governor of Hiroshima, Japan, (Albert Leffingwell)", "Dr. Leffingwell. From the Governor of Hiroshima." 8 1/16" x 2 7/8" x 15/16"
Box	A. Leffingwell	Round, wooden, puzzle inside. Maze type puzzle. Top has small circle of light wood inlaid. 3 small metal balls included. 4 15/16" in diameter, 1 3/16" high
Box	A. Leffingwell	Wooden, made with wooden pegs. Soft wood. 5 3/8" x 4 3/16" x 6 5/16" Written in lid: "This box made to order. Cost 3 1/2 cents. Tokio, Aug. 4, 1881" Written on side: "A.F. Leffingwell Contents: 1 wooden Buddha - tolerably fair; 1 wooden idol cost 2 cents or 1 d; 2 tiny Buddhas bought by pilgrims at Nikko.; 1 Buddhist rosary - black from temple at Kioto.; 1 rosary-natural color from Tokio" The rest is unreadable
Box	A. Leffingwell	Lacquered, ornamented with crest of a Daimo (baron), and tied with a black silk cord. In beautiful condition. 11 15/16" x 4 7/8" x 3". Gold decoration in lid and bottom of box. Appears to be metal underneath lacquer. Black lacquer, crests gilt.
Box	A. Leffingwell	Glass covered, contains rice paper pictures (7) from Canton, China. Cardboard box, rim decorated with colored cloth. Pictures painted on rice paper. Domestic scenes. First one of woman cutting cloth. 5" x 3 3/4" x 5/8" / Note bubbles in glass. Written on back: "From Canton, October, 1881, A. Leffingwell"
Box	A. Leffingwell	Note bubbles in glass. on back: Canton, October, 1881 A . Le f fingwe 11 t•
Bracelets (4)	A. Leffingwell	From Pompeii. The smallest bent. Bronze?

Bronze buckle	A. Leffingwell	Fragment from Phoenician tomb. Obtained Apr. 1890. On bracelet-like ring Chain with pendants of gold plated silver (in pieces, was about 13" long), statuette, fibula with rings (missing 1/73), strigil, armlets, small bracelets, bell, surgical instruments, sling shot (missing 1/73), weight, pins, hooks, nails, spoon, stylus (missing 1/73), arrowheads. Also bone bodkins, instruments, and dice (missing 1/73).
Bronze objects	Unknown	
Buddha	A. Leffingwell	Bronze, 6 1/4" high. Was gilded. Dates from 19th cent.
Rifle-ball	A. Leffingwell	1 rifle-ball from Gettysburg? rough metal. About 1 1/4" in diameter.
Bullet molds and powder horn	E. Morgan, 20 Apr. 1926	1840-1850. Powder horn: 4 3/8" long. Made of copper and brass with ornamentation on the side. Bullet molds: in plier like instrument-two molds Brass. 4 3/4" long.
Chain	A. Leffingwell	Five inches, small. From Pompeii. 2 pairs. 4 Pairs total. Unknown who gave what. 2 pair long, dark wood 10 13/32"; 1 pair short pointed, dark wood with grain prominent. 6 1/2"; 1 pair short, pointed with light color-small grain. 6 1/2"
Chopsticks	Anonymous	1 ladies' clog. Natural colored wood. Straw covered sole. Leather and cloth thong. Tag attached which says: "Dr. Albert Leffingwell. Moden shoe worn by Ladies in Japan." 8 1/2" in length.
Clog	A. Leffingwell	1 gentleman's clog. 9 1/2" in length. Straw covered sole. leather and cloth thong, blue cloth. Written on the side is: "A.J. Leffingwell-Japan Sept. 1881" Written on the bottom is: Japan a gentleman's shoe or clog for fine weather. Cost 60 sen Japanese. About 25cents US," the rest is unreadable.
Clog	A. Leffingwell	1 laborer's clog. Natural wood color. Leather thong; no straw cover. 8 15/16" in length. On side is written: "A.J. Leffingwell - Japan, Sept. 1881". On bottom is written: "Japan - Ordinary footwear of both sexes in fair weather. Cost 18 sen about 10 1/2 cents US curr. 5d English Curr."
Clog	A. Leffingwell	Clog for rainy weather. 8 3/4" long. Natural color wood with thin supports (for footing in wet weather). Cloth thong. On bottom is written: "Japan - Clogs used in rainy weather. Cost 20 sen, 11 cents, 5 1/2 d"; On side: "A.J. Leffingwell, Japan, Sept. 1881"
Cloth	A. Leffingwell	Coarse stuff, 18 x 18 inches, white, with yellow and blue border. Modern? On it written: "Egypt."
Cloth	A. Leffingwell	Japanese crepe (2 Pieces), finest known woven fabric: a yard can be drawn through a finger ring. Obtained 1881. For a robe. 2' 11", was blue, has picture of boats, nets and fish. Badly motheaten. 1' 7 5/8", light grey, has pictures of flowers (pink), bamboo and fishermen. In good condition.
Coffinwood	A. Leffingwell	Fragments of coffinwood from tombs near pyramids of Gizeh, showing wooden pegs used for fastening coffins. About 25 pieces. Some show evidence of being painted, one was burned. One is marked: "1886"
Coins	Unknown	Silver and bronze with inscriptions of the following names: T. Claudius Caesar, Constantiae (missing 1/73), Constantionopolis (missing 1/73), Caracalla (missing 1/73), Trajan (104-111 AD),. Hadrian (125-128 AD), Faustina (missing 1/73), Augustus (16-22 AD), Gordian III (240-244 AD), M. Aurelius, Gallienus (254AD), Antoninus, "Urbanus Romani", Janus, Aurelian (270-275 AD), Maximinus, and other coins which not be made out.
Coins	A. Leffingwell	5 packages worth. Not all seem to be present. All well used with Japanese characters. Holes in middle for convenience in carrying.

Combs (5)	A. Leffingwell	Wooden, native make. 5 11/16" in length- on it written: Hand Made comb (unfinished)." 2 double combs: one has Japanese characters on it. On the other side is written: "Fine comb. 3 cents, Japan." 3 13/16". On the other comb is written: "Fine comb (unfinished), Funaki, Japan, 1881" 3 15/16"; Small Comb with handle - 5 9/16"; Dark wood comb-arched: 5 9/16" "Funaki, Japan, Oct. 6, 1881 (unfinished), 1 1/2 cents."
Cork	A. Leffingwell	Spanish. Article pinned on the back (about the cork industry) 10 3/4" x 2 11/16" x2"
Dish	A. Leffingwell	Bronze, similar to a plate, the bottom was knocked out.
Egyptian cloth	A. Leffingwell	Linen with Tyrian purple stripe pattern interwoven thereon. Mounted in a plastic cover. Part of robe or mantle about six feet wide cut off from length unknown, this part being two feet thereof. Both ends fringed. Two dark purple stripes each 2" wide and 4" apart. From near Thebes. In very good condition. Color good .
Egyptian cloth	A. Leffingwell	Piece of linen dress with broad inwoven purple woolen border; from Coptic or Roman cemetery near Luxor. Early Christian era. Linen quite discolored.
Egyptian linen	A. Leffingwell	Fragments of very fine linen from Royal Tombs near Thebes. Obtained Apr. 1890. Fragile, brown. Tag with it that says: "Bits of fine linen brot from Royal Tombs near Thebes; found in situ by myself. January 1890. Probably 4000 years old."
Egyptian linen	A. Leffingwell	Rolled up linen bandage, 5" wide and 10' long. From Luxor. Fragments: majority missing
Egyptian Linen	A. Leffingwell	Plain oblong of fine linen, 3 x 4 feet.
Egyptian Linen	A. Leffingwell	4 x 6 feet; two broad Tyrian purple stripes at one end, each about one foot in width; each end of robe fringed. From near Thebes. Purple still fairly bright. Some ragged edges to the robe, otherwise fine.
Egyptian Robe	A. Leffingwell	2 long: Basalt? 11" long and 12 1/2" long (more smooth); 1 shirt: Made of some sort of quartz? 5 5/8" long.
"Fire-stones" (Celts)	A. Leffingwell	Used in the Presbyterian Church in Aurora. Made of wood and tin? Tin decorated. 9" x 8" x 5 10/16". In good condition .
Foot stove	S. Mandell	From tomb near ancient palace of the Zacatecus (Toltec or Aztec), Mexico. Dates from 14th century. Red color. 3/16" thick. Shows evidence that it was buried.
Fragment of a vase	P. VanOrden	For burning charcoal; dates from the 13th cent. Red with black markings on outside. Was glazed 5/32" thick.
Fragment of a Greek burial vase	P. VanOrden	
Fragments of a wall	A. Leffingwell	
Glass	Unknown	Ancient Pompeian and Phoenician fragments of metal, glass, and mosaic and pottery. Top of a jar filled with bits of metal (bronze mostly).
Glass	A. Leffingwell	Glass dish, about 3 1/2" in diameter, round and shallow. From tomb near Haifa. Obtained 1890. (Phoenicia). Pumice like material caked on the bottom.
Glass	A. Leffingwell	Glass support to some dish or goblet; 1 3/4" in diameter. From tomb near Haifa. Obtained Apr. 1890. (Phoenicia).
Glass	A. Leffingwell	Tear-vase from Phoenician tomb near Carmel. Complete except rim.
Glass	A. Leffingwell	Glass dish; 3 1/2" in diameter, round and shallow. From tomb near Haifa. Phoenician.
Glass	A. Leffingwell	Double vase, probably for toilet use. Double cavity, joined at the base. Rim wanting. From Phoenician tomb. (More than half the rim wanting how about half the base.)
Glass	A. Leffingwell	Two fragments of vases found among ruins of ancient city (now disappeared completely) two miles south of Haifa. Obtained Apr. 1890. One piece has a gilt-like covering on it. (Phoenicia).

Glass	A. Leffingwell	Two fragments of ornamental glass bracelets. From tombs near Carmel. Large piece has blue design within the glass. Small piece is blue with white design. Not translucent.
Glass	A. Leffingwell	Glass tear-vase, translucent; perfect except rim; from Phoenician tomb near Mt. Carmel.
Glass	A. Leffingwell	Phoenician glass bead, from tomb near Carmel. Obtained Apr. 1890. Blue with eye-like spots (white then brown spot in the middle). Hole for stringing.
Glass	A. Leffingwell	Phoenician. Irridescent and coke bottle green in color.
Gourd	M. Fuertes	Bits of glass etc., from ruins near Haifa (the ancient Sycaminum), a town of Syria, at the foot of Mt. Carmel.
Grain (parched)	A. Leffingwell	Gourd or vessel, with stereotyped design; South American Indian.
Greek pottery	P. VanOrden	Food of the lowest working classes. Obtained from Bombay, India, 1882. Looks like peas. Used for spices and placed in a coffin. Dates from the 12th century. Taken from a tomb at Guelma. Red brown with black patches as if burned. 1" in diameter. Top: 1 1/2" in diameter. Stands 1" high. 5/32" thick. Bottom thick.
Hair brush	P. VanOrden	Mexican. For Peons. Made of dried type of grass(?). Tied in middle with string which is painted. Tagged. 4 3/4" long/
Head	A. Leffingwell	From Pompeii. Small, marble, of woman?
Headrests (2)	A. Leffingwell	Light colored wood, used as pillows. Can be adjusted to desired angle. 9 7/8" in length. 4 compartments for ink or kohl. Pottery, predominant color off white. 3 3/16" x 2 1/4" x 11/16". Compartments of different sizes. All seem to be stained or glazed with a green-colored substance.
Holder	A. Leffingwell	Pompeii. Of bronze.
Hook and spatula	A. Leffingwell	Straw. Shoes round, with cords attached. About 5 3/4".
Horse shoes (3 pair)	A. Leffingwell	Bronze, in the model of a peasant's cottage. (Japan).
Incense burner	H. Jodai	Chinese, up on tripod, legs gilded. Two supports of a sort over container-gilded. Container highly decorated- lead (?). 5 1/4" high. Late 19th cent. Tag with characters attached.
Incense burner	R. Hickock Mar. 23, 1923	Piece of a water jar. Roughly triangular shape. Gray with darker stripes painted on. Grooves (4) cut across the stripes. From Pompeii.
Jar	A. Leffingwell	Handles to daggers, inlaid with other metals (gold, copper, and silver). Fine quality. Ca. \$20 each, \$400.00 for the lot. 19 brass, 3 3/4" x 17/32. 3 plain brass with copper inlay 3 21/32" x 17/32". 1 large plain copper 4 3/16" x 3/4". All have figures of animals, plants, people, scenery, etc .
Kod-zu-kas (23)	A. Leffingwell	Shows liquid-like formation.
Lava	A. Leffingwell	Greek and Roman. Made from terra cotta for the most part. Most are brick red, a few were painted black. 14 lamps, ? 5 oil pourers.
Lamps (oil)	Unknown	From Vesuvius.
Lava	A. Leffingwell	Of "Revolutionary Paris" made in a newspaper office in Auburn, N.Y. Metal (lead) on wooden backing. 9 3/16" x 6 11/32" x 19/32".
Linotype map	E. Morgan	From Revolutionary musket. Good condition. Pont still sharp. Has Number on lock: "3C034"? Steel? 28 1/2" long. Found in Rockland County, NY.
Lock and bayonet	P. VanOrden	Marmeo Grego, Alabastro Palombara Fasciato, Portasanta Vaticana, etc.
Marbles	Unknown	Alabastro Pecorella, Pavonazzeto, Giallo Antico, Cipillino Verde, Fasciato, etc.
Marbles	Unknown	

Marbles	Unknown	Codanella Brecciato, Marmo Pario, Serpentino, etc.
Marbles	Unknown	Porta Santa Bresciata, Bicie Lumacato, Orientale Ghiacciato, Breccia Dorato, etc.
Masonic Apron	M. Richmond-Pressly, May, 1925	Belonged to a son of Jonathan Richmond, father of Mrs. Richmond-Pressly. Fine material, gilt fringe.
Matting	A. Leffingwell	Japanese. Fringed, straw. Wrapped with masking tape - difficult to remove. Dusty.
Medal	Unknown	Official medal of the Hudson-Fulton Celebration Commission. Designed by Emil Fuchs, 1909.
Money	A. Leffingwell	2 medals set in wood. Brass. Top one for Fulton, the other for Hudson. 12" x 6 15/16" x 1/2".
Money	A. Leffingwell	Several strings. Bronze? Brass? Worn, holes in the middle through which it is string.
Money	A. Piutti	Characters on front. <i>Some missing 1/73</i>
Mosaic	A. Leffingwell	String of cash on grass cord, as delivered to pilgrims to place before shrines.
Mosaic pavement fragments	A. Leffingwell	Used during the Civil War. Collection of Mrs. Samuel Adams, King's Ferry, Father of Mrs. A. A. Piutti. 15 bills. \$5, \$10, \$20, \$50. In heavy wooden frame.
"Necklace" - Buddhist rosary	A. Leffingwell	Several bits of mosaic, from Haifa, Phoenicia. Colors: dark greys and white.
Newspaper	A. Leffingwell	3 pieces, with several loose blocks of the material. Large mosaic pieces. Black and white in color. Cement like filler between blocks of material.
Newspaper	A. Leffingwell	Black beads and glass beads. Threaded on silk cord. Black stained wood. Black silk cord with clear glass beads and two tassels at either end. Looks as if it was used for religious purposes.
Nightgown	M. Richmond-Pressly	Japanese. In two parts. No pictures just the Japanese characters. A little worse for wear.
Ornament	A. Leffingwell	Japanese with enclosed picture of Shinto Shrine. In better condition than the other. Picture in bright colors over what appears to be a sign.
Ornament	A. Leffingwell	Made by Nancy Richmond Eagles, youngest child of Jonathan Richmond. Torn on the left shoulder. Made of a white cloth (by machine). Lace with an E on the front. Beautiful piece of clothing. Very intricate embroidery.
Paper cutter	A. Leffingwell	Egyptian. Large round purple ornament, embroidered with linen figures. Ornament in better shape than linen. Geometric design decorates the ornament in the center.
Paper cutter	A. Leffingwell	Egyptian. Purple oval ornament embroidered on linen robe. Ornament has large 8 sided star in the middle of concentric rings.
Peace cap of a tomahawk.	P. VanOrden	Wooden. Bamboo with picture of bamboo on it. 8 7/8" in length. Japanese.
Peat from Ireland	5 irregular pieces. Brown -.	Made of olive wood. Hebrew lettering on the front. 10 1/4" in length. Light colored wood with dark streaking. From Palestine.
Photographs	A. Leffingwell	Light wood painted black. Threaded like screw. Has been whittled. 1 21/32" in length. 3/4" across the top.
Photographs	A. Leffingwell	pieces. Brown-
Pictures	A. Leffingwell	" Japanese types" small mounted photographs. 1 of a scene-a bridge with boats. 17 old fashioned brown and white. Leffingwell has written where they were obtained on the back of most of them
Piece of first Atlantic cable	P. VanOrden	22 unmounted, 6 mounte. All brown and white, tinted. They show either single or group photographs of Japanese or Japanese in everyday life.
		Series of rice-paper native colored pictures, views, etc.
		1 5/16" in length. 1 3/16" in diameter. Outer casing of lead. Inside is copper. Several wires (37) twisted are inside.

Placques	A. Leffingwell	Black painted wood. Two gods of war in threatening attitudes standing on two demons, both measure 9 7/8" x 4 3/4" x 3/8". on the back of the more quiet looking god is written: "West Ko-moku-teri"? and the name in Japanese characters. On the other is written: "East Brot from Japan 1881 Albert Leffingwell, Dunsville, N.Y. Ji-koku-tin." The name is written in Japanese characters.
Pompeian fresco	A. Leffingwell	Broken in two. Blue background with some unknown object painted on it.
Pottery	A. Leffingwell	Handle of a round, shallow dish. From ancient rock tomb near Mt. Carmel. Phoenician. Colors much faded -- used to be red.
Pottery	A. Leffingwell	Red with black writing on it. Irregular square. Roughly 2" x 2 5/8" x 1/4" thick. Writing could be Arabic.
Pottery vessels	A. Leffingwell	From Pompeii. Only one left others fell to dust when they were unwrapped.
Rifle cartridge	P. VanOrden	Found on Spanish war vessel at the taking of Santiago. Vessel's name: Viscaya. About 2" long. Japanese. Huge, one with thin blue stripes on white. The other with brown, black, and white thin stripes. Cotton?
Robes (2)	A. Leffingwell	Well preserved. Obtained 1878 from Fuller's house. Bronze. 3 5/8" long, 1 5/8" in diameter in bowl.
Roman lamp	A. Leffingwell	From Jerusalem. Light wood. Cross has Jerusalem written on it.
Rosary	A. Leffingwell	Buddhist, from Japan. Natural colored wood. Large bead at opposite ends of necklace like part. At one end a small loop goes out from that and the two strands with the plain rope at the end. At the other end the rope goes in three strands then changes to three wooden beaded finally ending in three strands of the plain rope. A tag is on the end. Rosary broken a few beads missing.
Rosary	A. Leffingwell	All have straw thongs plus a cord (also of straw) to hang or carry the sandals with. 9 1/4" in length.
Sandals (6 pairs)	A. Leffingwell	8 1/2" in length. Covered with colored cloth which is predominantly blue. Seems to have been woven in with the straw. Thongs are straw twisted with blue, red and grey cloth.
Sandals (1 pair)	A. Leffingwell	9 1/2" in length. Straw, of a better sort. Thongs of canvas like material. Better woven than other straw sandals.
Sandals (1 pair)	A. Leffingwell	Heavy straw, leather soles and metal heel-plates. 9 1/2" in length. Black leather thong. Sandal woven well. Sole thick metal is steel or iron.
Sandals (1 pair)	A. Leffingwell	Used before blotting paper. Light wood. Bowl 13 15/16" in diameter. On a hollowed out stand where sand was. Holes punched in the bottom of the bowl. 4 1/8" high. Crack in the stand. Blue cloth on the bottom to prevent scratching of the table.
Sand box	P. VanOrden	Embroidered (Batik embroidery) with painting in wax. 11 3/4" wide x 2 yards. 31" long. was orange colored material. Pictures of herons and swamp plants.
Scarf	A. Leffingwell	1 red with a green border and fringed. Moth eaten. 1 orange with blue, yellow and white with fringe. In bettercondition. Long.
Scarves (2)	A. Leffingwell	Heart-shaped, presented to Mr. Richmond, Christmas, 1868. 5 1/5" x 6 1/2". Red with gold decoration. Hand done. Ribbon tie -- ribbon worn. Inside is several sheets of paper on the first of which is written: "A Merry Christmas. Mr. Richmond 1868 Miss Mill"?
Shaving case	M. Richmond-Pressly	

Shell	P. VanOrden	Fired in the Philippine Islands during the war with Spain. 8 1/4" in length. 1 3/4" in diameter. Head made of brass, iron?, steel. On the bottom of the head is written: "Am. Ord. Co. 1888." On the bottom of the other part of the shell (made of brass and somewhat inside) is: "Manufactured by Winchester Repeating Arms Co., New Haven, Conn., USA 5-98."
Shoes (2) pair	A. Leffingwell	MAde of white canvas with a sole of some coarse materials for good footing. Clasps at the back (tin?). Both pairs 9 1/2" long. Separate large toe.
Shrine	A. Leffingwell	Shrine of the Goddess K'wannon (Goddess of Mercy). Worth \$10.00 Black lacquered wood. Case has doors which are gilded on the inside. Beautiful back-drop (broken). Stand intricate. Goddess, stand and background made of cedar(?). Hook and hinges made of brass. 4 1/4" high. Goddess is: 2 9/16" high. painted and carved very well.
Silk	A. Leffingwell	Raw floss, Obtained 1881. In white cardboard box. Silk mixed with what looks like seeds. Scrap of blue cloth mixed in also, looks like stuffing for a doll.
Silk	A. Leffingwell	Large pieces for robes, figured. Obtained 1882. Fine silk. 3 pieces. Light blue with butterflies and leaves woven into texture of the cloth. Painted on the cloth are various animals and plants. Seams and hems are hand done.
Silversmith scales	P. VanOrden	Dates from about 1745. Box (oak?) 6 9/16" x 2 5/16" x 1". Top of the box ornamented. Brass hooks (one different form the other) keep it closed. Primitive hunges (also brass). On top is written: "Rodger Haskell; Hinsdale Depot, Mass." On the inside of the top in beautiful script is: "Samuel Freeman at ye Plow over against ye Pewter Pot in Leadenhall Streete. Maketh all sorts of scales Waites and (unreadable)" Inside are hole carved in the wood for instruments. There are 4 round holes for weights with handles on them. There is a square hole which contains 9 brass square weights of various sizes. The scale is made of iron (steel?) with brass pans 2" in diameter. IT hands from 3 cords. The scale still balances.
Smoking cap	P. VanOrden	Made from seeds grown on the Islands. Two types of dark brown seeds strung together. A round type and a flat apple/watermelon type. Cap in fragments. What Islands?
Soapy substance	A. Leffingwell	From the "House of the Fuller". Grey and white in color. Pompeii.
Socks	M. Richmond-Pressly	Knitted, white, fairly long.
Sponge coral	P. VanOrden	From Windward Islands. In four pieces. Dull brown in color.
Spoon	Sandborn	Pewter spoon from Haarlem, Holland. In bowl of the spoon is a copy of "De Tandmeester" (The Dentist) by Jan Steen. Heavy, thick spoon. 7 13/16" long. 2 pieces-dropped by me 1/73. Worn, Pottery? Stone? Green color. Look like mummies: traditional Egyptian head dress arms crossed, Holding objectsin the hands. Hieroglyphics on the front of the body up to the crossed arms. Called ushabti, Were put in the tomb to serve the dead person in the afterlife. One seems to have been glazed. Large one: 3 5/8" Small one: 3 1/4".
Statuettes (2) - Shawabti or Ushabti or Shabti	A. Leffingwell	God of good luck. Dark wood very light. Crouching man with knapsack or wings. Pleasant looking, smiling. 1 7/8" high. Written on the bottom: "Good luck, Tokio."
Statuette	A. Leffingwell	Brass? One is kneeling on two pillos. It holds a hammer in one hand and a bag is slung over its shoulder in the other. 2 11/16" in height. The other has knapsack like affair on its back and has a fish slung under one arm. It seems to be sitting on a cushion or rock. Both seem pleasant. Stand 3 1/4" high. They are Ebisu, god of good fortune and Daikoku, the source of wealth. Statue with knapsack on back has a removable bottom panel.
Statuettes (2)	A. Leffingwell	

Statuettes (3)	A. Leffingwell	Brass gods. Dancer: 4 15/16" high -- Krishna, the cowherd. Elephant headed: 3 3/32" high Ganesha. Monkey headed: 3 1/4" high Hanuman.
Stone implement - cosmetic spoon	A. Leffingwell	Spoon? Egypt. Dark, black-with green stone. Woman's body with head of a sun?. Legs broken off.
Stones	A. Leffingwell	Bits of an old Egyptian wall.
Stones	A. Leffingwell	Bits of soft white sandstone, reddish tint: part of outer casing of the Great Pyramid. 5000 BC - red, part of figures, part of leg, skirt, and elbow
Stones	A. Leffingwell	Bit of sandstone, reddish tint: part of GreatPyramid (outer casing). Shows angle of 50 degrees.almost 1m0k trregular shape .
Stones	A. Leffingwell	Two bits of Great Pyramid mortar, 5000 BC. The reddish tint comes from the use of fragments of broken pottery in the mortar.
Stone	A. Leffingwell	Bit of rock from Pyramid plateau, showing conglomerate fromation: shells, pebbles, etc. off white color. Small round flat pebbles--almost look artificial. Irregular shape.
Stones	A. Leffingwell	Stones. Bit of black granite (diolite) from ancient temple. Of especial interest as showing on dressed surface, certain marks indicating use of saw. Yet this is the hardest stone known.
Stone	A. Leffingwell	Unable to see "marks indicating use of saw." About 3 3/4" long.
Sword guard	A. Leffingwell	In shape of foot. Marked: "Desert of Sahara. By the Pyramid, 1888." Dull brown. 2 7/16" x 1/4". Copper with representation of man by side of stream, flowers, rocks, etc. Man is made of different metals silver(?) brass(?). Two holes in guard: 1 for blade, the other for a grip. Japanese characters inbetween.
Sword guard	A. Leffingwell	Possibly iron, with butterflies and flowers of silver and gold. 3 holes, two for grip, 1 for the blade. It looks as if this one was used.
Table cover	A. Leffingwell	Square resembling a handkerchief in dark purple and white. Badly moth eaten. Color has faded. From India.
Tea canisters (4)	A. Leffingwell	Lacquered, 2 large, 2 small. Black background with still life (plants, bowls, the view through a window, etc.). Japanese characters up the side. Tall ones: 7" high. 3 3/8" in diameter. Short ones: 5" high. 3 1/8" in diameter.
Tile	A. Leffingwell	Glazed, painted, from Acre. Grey background, Greek key design in green and yellow. 7/8" thick. Written on the surface: "Acre (unreadable) 1890." Palestine.
Tobacco pouch	A. Leffingwell	Japanese. 3 7/8"x2 3/4". Made of a green patterned material, bamboo clasp. Small metal container inside: 13/16" in diameter with some red powder inside.
Tokens	P. VanOrden	Used as money during the Civil War. In wooden frame, 38 pieces of money. Paper--ranging from 3cents to 50cents, United States.
Tooth brushes	A. Leffingwell	Wooden. Brushes found but are they tooth brushes. 9, one in a straw case. Seem to be made of Pine. Japanese.
Top of a clay jar	A. Leffingwell	Red and black, from Pompeii. 1 13/16" in diameter in round handle part. Handle is red. Written on it: "Pompeii, 1890".
Turkish passport	A. Leffingwell	Paper in terrible condition, handle as little as possible.
Turkish slippers (1 pair)	A. Leffingwell	Dark red (maroon) leather. Pointed toes. Double thickness soles. Hand done. 10 3/4" in length.
Turkish spoon	P. VanOrden	Brass? 5 3/8" in length. Bowl 1 1/4" in diameter. Writing in the bowl, the end of the handle set with three small stones: 1 red,2 blue (different shades). Very tarnished.

Unknown object	A. Leffingwell	Cylindrical, evidently from tomb. Made of some sort of fibrous material (plant). Grooves in center indicate that a rope or cord was tied around it. 2 7/8" in length.
Vase	Unknown	Rather deep bluish green, less transparent and fragile, does not flake as other pieces do. 8" tall, height of neck 5 1/4" Diameter at top 1 1/2" and at bottom 2 3/4". More green in color than anything else. For perfume or oil. Roman 1st-4th cent. AD.
Vases	Unknown	Small, terra cotta, red and black ware. Askos and Cylix shapes included. 2 Askos shaped vases, one red, the other black with red markings. Other assorted shapes and sizes with them.
Vases and dishes	Unknown	Terra cotta, black and red.
Vase with handle.	Unknown	Bronze and yellow are the predominating colors with bits of green and purple. 6 3/4" high: 7 3/4" in diameter at the widest point. Handle: 1 3/4" in width. Practically whole. Few fragments missing, was pieced together. Plastically applied handle. Incised lines. Roman. 2nd to 3rd cent. AD.
War cap of tomahawk	P. VanOrden	3 11/32" in length. Wood painted black. Screw threads-like carving near top.
Wax taper	P. VanOrden	Brass. Wax taper wound about a candle stick. Piece of wax with wick through it. It is brought up through a holder and lit. Attached to holder is snuffer on a chain. Soot in the snuffer indicates that it has been used.
Wood	H. Jodai	For burning in Jananese incense burner. Several thin pieces of wood (light colored). Has been mixed up with other wood so that I am not that sure which is which.
Wooden ornament	P. VanOrden	Turned at the Penitentiary of Tenn., July 14, 1900. Looks something like a Mexican chocolate grinder. Made of a light colored unvarnished wood. 6 1/8" long. Written on the side: "Turned at the Penitentiary of Tennessee, July 14, 1900."

CHRISTIE'S

Selection For Sale

Property Belonging to

Wells College
170 Main Street
Aurora
New York
13026
USA

23 October 2024



Christie's Inc.
20 Rockefeller Plaza, New York, NY 10020
phone 212 636 2000
www.christies.com
10716475/109925

CHRISTIE'S

Specialists

Estimated By

Richard Nelson	Senior Vice President Senior Generalist Appraiser
Charles Tolkien-Gillett	Junior Specialist Books & Manuscripts, New York

Estimated from Photographs

Tylee Abbott	Senior Vice President, Head of Department, Senior Specialist American Art, New York
Quincie Dixon	Associate Specialist, Head of Sale American Art, New York
Eugenio Donadoni	Senior Specialist Medieval & Renaissance Manuscripts, London
Christina Geiger	Head of Department Books & Manuscripts, New York
Lindsay Griffith	Senior Vice President, Head of Department Prints & Multiples, New York
Richard Lloyd	Deputy Chairman, International Head of Department - Prints & Multiples
Margaux Morel	Associate Vice President, Head of Day Sale and Works on Paper Impressionist & Modern Art, New York
Takaaki Murakami	Vice President, Head of Department Japanese & Korean Art, New York
Casey Rogers	Senior Vice President, International Specialist & Head of Department 19th Century Furniture & Sculpture, New York
Hua Zhou	Junior Specialist Japanese & Korean Art, New York

CHRISTIE'S

Selection For Sale

Property Belonging to

Wells College
170 Main Street
Aurora
New York
13026
USA

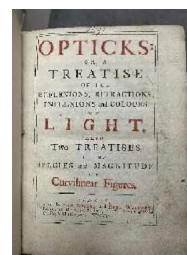
Books and Manuscripts Online

Sale Location: New York

Sale Date: January 2025

1.

NEWTON, Isaac. Opticks: or, a Treatise of the Reflexions, Refractions, Inflexions and Colours of Light. Also Two Treatises of the Species and Magnitude of Curvilinear Figures. London: for Sam Smith and Benj[amin] Walford, 1704. First edition, ? issue. Early calf boards with modern cloth spine?



(If first issue and complete)

CHRISTIE'S

Arts of Asia Online or Japanese and Korean Art Live
Auction

Sale Location: New York

Sale Date: March 2025

2.

A WOOD FIGURE OF A SEATED MONK

MUROMACHI-EARLY EDO PERIOD (16TH-17TH
CENTURY)

43 in. (109.2 cm.) high



CHRISTIE'S

Modern American Art
Sale Location: New York
Sale Date: April 2025

61.2

3.

CHARLES EPHRAIM BURCHFIELD (1893-1967)

Misty July Morning

signed with initials in monogram 'CEB' and dated '1948'
(lower right)

watercolor

34 1/2 x 25 1/2 in. (87.6 x 64.8 cm.)

Executed in 1948



CHRISTIE'S

Prints and Multiples
Sale Location: New York
Sale Date: April 2025

95.306

4.
PABLO PICASSO (1881-1973)

Head of a Woman
lithograph, 1928
numbered 184/200
8 x 5 1/2 in. (20.3 x 14 cm.)



CHRISTIE'S

The Collector Online
Sale Location: New York
Sale Date: April 2025

5.
**A PATINATED BRONZE AND MARBLE
FIGURE OF MERCURY, AFTER THE
ANTIQUE**

57 in. (144.8 cm.) high



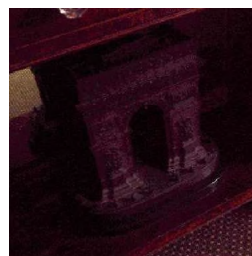
6.
**A PATINATED BRONZE AND FIGURAL
MOUNTED COLUMN, AFTER THE ANTIQUE
TOGETHER WITH A PATINATED AND
BRONZE OBELISK, AFTER THE ANTIQUE**

37 in. (94 cm.) high



7.
**A PATINATED BRONZE AND MARBLE
MODEL OF AN ARCH**

36 in. (91.4 cm.) high



CHRISTIE'S

Impressionist and Modern Works on Paper

Sale Location: New York

Sale Date: May 2025

95.332

8.

AUGUSTE RODIN (1840-1917)*Female figure bending*

watercolor

10 x 8 in. (25.4 x 20.3 cm.)

(Assumes that the recognized authority on the artist
would confirm attribution)



95.333

9.

AUGUSTE RODIN (1840-1917)*Standing female figure with drapery*

watercolor

14 x 9 in. (35.6 x 22.9 cm.)

(Assumes that the recognized authority on the artist
would confirm attribution)



CHRISTIE'S

Valuable Books and Manuscripts

Sale Location: London

Sale Date: July 2025

10.

Follower of Jean Bourdichon, Book of Hours, use of Angers, in French and Latin, illuminated manuscript on vellum [Loire, final quarter 15th century]



STAIR

549 Warren Street
Hudson, NY 12534

518.751.1000 fax: 518.751.1010
stairgalleries.com

Property from the Collection of Wells College
c/o Mary Tasillo
170 Main Street
Aurora, NY 13026
mtasillo@wells.edu

April 17, 2025

Property from the Collection of Wells College- 2

1. Max Beckmann (1884-1950)
Die Pelz Mütze (The Fur Hat)
Etching



2. Hans Sebald Beham (1500-1550)
Seated Figure Reading; and Hercules Fighting Against the Trojans
Two engravings



3. Alexander Calder (1898-1976)
Untitled
Lithograph in colors



Property from the Collection of Wells College- 3

4. Marc Chagall (1887-1985)
Moses Saved from the Water, from *The Bible*
Etching, 1958



5. Christo (B. 1935-2020)
Orange Store Front
Lithograph in colors, 1979



6. Charles-Louis Clerisseau (1721-1820)
Fantastic Ruins
Pen and watercolor on paper



Property from the Collection of Wells College- 4

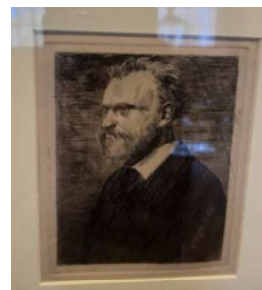
7. Charles-Louis Clerisseau (1721-1820)
Temple of Minerva at Assisi
Pen and watercolor on paper



8. Stuart Davis (1894-1964)
Rue Des Rats
Lithograph in colors



9. Hilaire Edgar Degas (1834-1917)
Manet En Buste
Etching



10. Louis Michel Eilshemius (1864-1941)
St. George and the Dragon
Oil on cardboard



11. Louis Michel Eilshemius (1864-1941)
Bathing Figures II
Oil on cardboard



Property from the Collection of Wells College- 5

12. Louis Michel Eilshemius (1864-1941)

Bathing Figures II

Oil on cardboard



13. Lyonel Feininger (1871-1956)

Rathaus Von Zottelstedt

Woodcut, 1918



14. Helen Frankenthaler (1928-1988)

Frame

Color serigraph, edition of 200



15. Francisco De Goya (1746-1828)

San Cuchilladas Mas No Malas Palabras

Aquatint



16. John Graham (1880-1961)

Pear and Telephone

Pencil and wash on paper



Property from the Collection of Wells College- 6

17. Karl Heinrich Gruppe (1893-1982)
Kneeling Women: A Pair
Bronze bookends



18. Joseph M. Hanson (B. 1946)
Study for a Painting
Pencil and crayon on paper



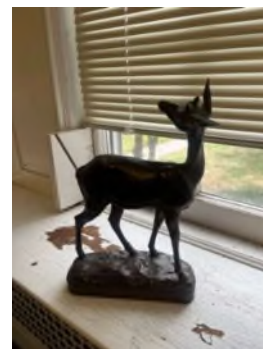
19. Hans Hartung (1904-1989)
Untitled
Etching



20. Edna Hibel (1917-2014)
Still Life
Oil on canvas



21. Anna Huntington (1876-1973)
Deer
Bronze, marked



Property from the Collection of Wells College- 7

22. Jean Leon Jansem (1920-2013)
Personnages Derriere Une Port
Oil on canvas



23. Cecil Kennedy (1905-1997)
Floral Still Life
Oil on canvas



24. Ernst Ludwig Kirchner (1880-1938)
Mann, Den Kopf In Die Hande
Woodcut, 1923



25. Paul Klee (1879-1940)
Kopf (Bartinger Mann)
Lithograph, 1925



26. Lucas Van Leyden (1494-1533)
Saints Peter and Paul Seated, Disputing
Engraving, 1520



Property from the Collection of Wells College- 8

27. Henri Matisse (1869-1954)
La Cité Notre-Dame
Etching, 1937

Literature:
Duthuit 248

28. Henri Matisse (1869-1954)
Portrait D'Un Homme
Lithograph, 1947

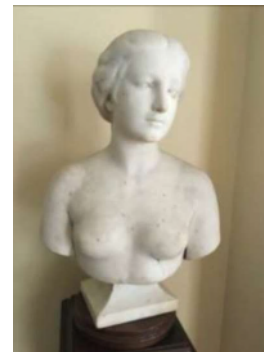
29. After Francois Millet (1814-1875)
The Sower
Lithograph

30. Adriaen Van Ostade (1610-1685)
The Hand-Organ Player (Der Leiermann)
Etching, 1647

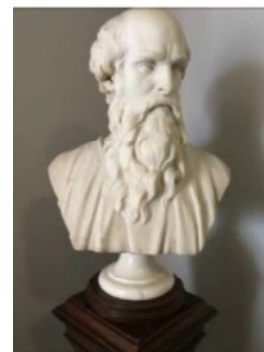


Property from the Collection of Wells College- 9

31. Erastus Dow Palmer (1817-1904)
Bust of a Young Woman
Marble



32. Erastus Dow Palmer (1817-1904)
Bust of a Bearded Man
Marble



33. Georg Pencz (c. 1500-1550)
Death of Lucretia
Engraving



34. Pablo Picasso (1881-1973) *Tête*,
Plate 7 for Sable Mouvant
Aquatint, 1965, Plate #7



Property from the Collection of Wells College- 10

35. Pablo Picasso (1881-1973)
Faune Et Marin
Lithograph in colors, 1956



36. Francesco Piranesi (1758-1810)
Thirteen Etchings



37. Rembrandt Van Rijn (1606-1669)
Self Portrait with Raised Sabre
Etching



Property from the Collection of Wells College- 11

38. Rembrandt Van Rijn (1606-1669)
The Angel Departing from the Family of Tobias
Etching



39. Rembrandt Van Rijn (1606-1669)
The Artist's Mother: Head and Bust
Etching



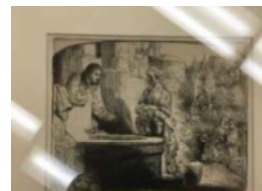
40. Rembrandt Van Rijn (1606-1669)
Rembrandt's Mother: Head and Bust
Etching



41. Rembrandt Van Rijn (1606-1669)
Rembrandt's Mother with Hand on Chest
Etching



42. Rembrandt Van Rijn (1606-1669)
Christ and the Samaritan Woman
Etching



Property from the Collection of Wells College- 12

43. Rembrandt Van Rijn (1606-1669)

Christ Preaching

Etching



44. Rembrandt Van Rijn (1606-1669)

Abraham Talking to Isaac

Etching



45. Rembrandt Van Rijn (1606-1669)

The Tribute Money

Etching



46. Rembrandt Van Rijn (1606-1669)

Rembrandt's Mother: Full Face

Etching



47. Rembrandt Van Rijn (1606-1669)

Self Portrait with Cap and Plume

Etching



Property from the Collection of Wells College- 13

48. Graham Sutherland (1903-1980)

Thorn Cross

Lithograph in colors



49. Jacques Villon (1875-1963)

Le Concert Sur La Plage

Aquatint, 1907



50. European School:

Group of Five Etchings

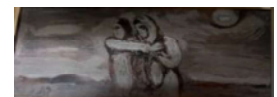


51. Georges Rouault (1871-1958)

Temoins: Marie

Wood engraving,

Together with the original wood block



Property from the Collection of Wells College- 14

52. Possibly Attributed to Gonzales Coques (1614-1684)
Interior of a Cathedral
Oil on canvas



53. Fukui Ryonosuke (1923-1986)
The Sun and Flowers
Oil on canvas



54. Group of WWII Lithographic Posters
43



55. Josef Augustin Paukert (1879-1960)
Bust of a Man
Bronze



Property from the Collection of Wells College- 15

56. Albrecht Durer (1471-1528)
Young Couple Threatened by Death (Der Spaziergang)
Engraving, 1498



57. Katsushika Hokusai (1760-1849)
The Great Wave Off Kanagawa
Woodcut

(Reproduction)



58. Mary Cassatt (1844-1926)
Quietude
Drypoint, c. 1891



59. Anders Zorn (1860-1920)
The Swan
Etching, 1915



Property from the Collection of Wells College- 16

60. American School
Study for Portrait of Frederick Stephenson
Oil on canvas, c. 1885



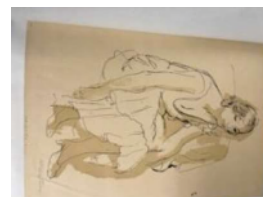
61. Le Corbusier (1887-1965)
La Main ouverte
Lithograph in colors, 1959



62. Jean Jansem
Harbor
Oil on canvas



63. Max Pechstein (1881-1955)
Wartende (Waiting)
Lithograph, 1946



64. Karel Appel (1921-2006)
Faces and Stripes
Lithograph in colors



Property from the Collection of Wells College- 17

65. American School
Portrait of Mary Barker Morgan



66. Joseph Hanson (b. 1946)
Still Life (Geometric#2)
Oil on canvas



67. Erastus Dow Palmer (1817-1904)
Morning; and Evening
Two Marble Relief



Property from the Collection of Wells College- 18

68. Erastus Dow Palmer (1817-1904)
Portrait Relief of a Woman



69. Erastus Dow Palmer (1817-1904)
Portrait Relief of a Woman



70. *Portrait of Daniel Webster*
Oil on board



Property from the Collection of Wells College- 19

71. Japanese School

Group of Ukiyo-e Prints

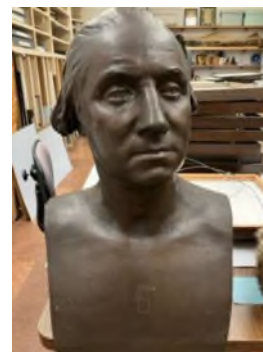
9

- 5 in solander box
- 2 framed and attributed
- 2 framed an unattributed

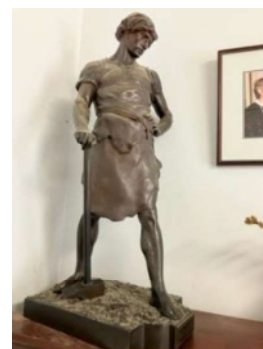


Property from the Collection of Wells College- 20

72. Ferdinand Barbedienne (1810-1892)
Bust of George Washington



73. Émile Louis Picault (1833-1915)
Pax et Labor
Bronze



74. Italian Walnut Marquetry Trestle Table



75. Metal Shelf



Property from the Collection of Wells College- 21

76. Pair of Regency Mahogany Floor Globes, by Cary's



77. After Bertoia/Sculptura Patio Set



78. After Bertoia/Sculptura Patio Set

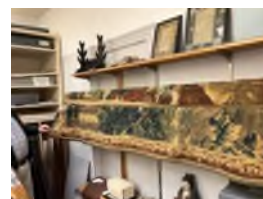


Property from the Collection of Wells College- 22

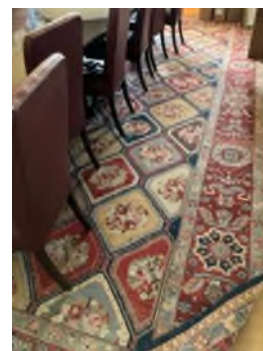
79. Early 20th Century Shell Shade and Floor Lamp



80. Large Brussels Garden Tapestry



81. Large Persian Tile Carpet



82. Grand Tour Plaster Portrait Bust of a Woman

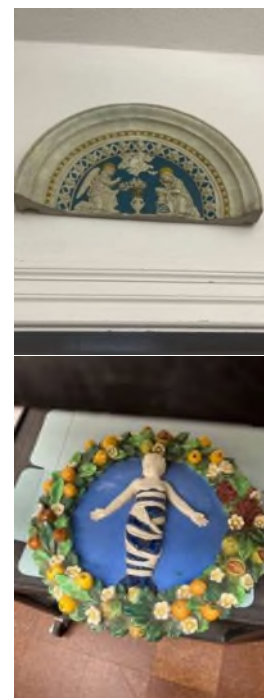


Property from the Collection of Wells College- 23

83. Plaster Cast, St. Ignatius



84. Two Tondos, After Della Robbia



85. American School
Figure of a Colonial Soldier
Paper and fabric



Property from the Collection of Wells College- 24

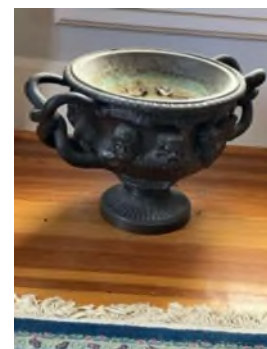
86. Miniature Pietra Dura Panel, Ugolini



87. French Champleve Enamel and Porcelain Mounted Clock



88. Bronze Warwick Vase



89. Group of Wedgwood Wares



90. Large Iznik Bowl
Restored

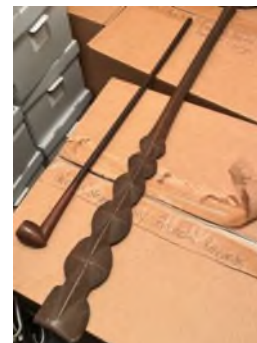


Property from the Collection of Wells College- 25

91. Small South Pacific War Club



92. South Pacific War Club



93. Two Small South Pacific Wood and Tooth Spears



Property from the Collection of Wells College- 26

94. South Pacific War Club

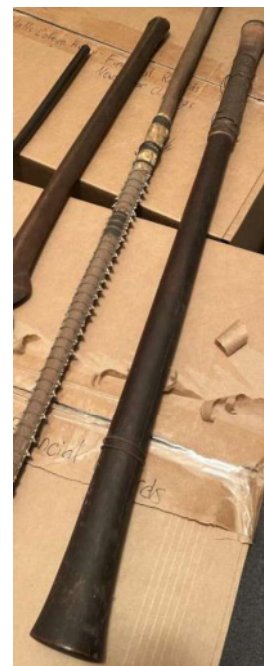


95. Wood Boomerang



Property from the Collection of Wells College- 27

96. South Pacific War Club



97. South Pacific War Club, Probably Fijian



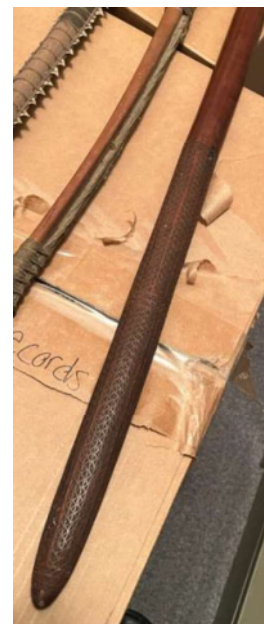
Property from the Collection of Wells College- 28

98. Two Wooden Bows



Property from the Collection of Wells College- 29

99. South Pacific War Club



100. Gold Collar

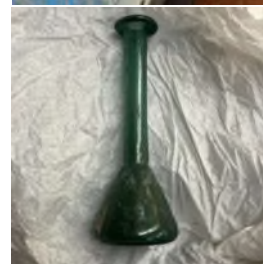


101. Fijian War Club



Property from the Collection of Wells College- 30

102. Group of Roman Glass Vessels



103. Japanese Coral and Leather Mounted Vest
Together with a lacquer helmet



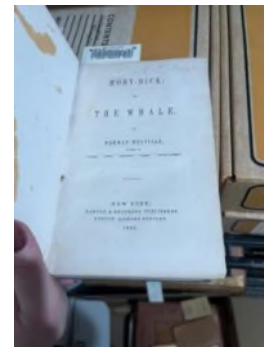
Property from the Collection of Wells College- 31

104. Group of Cuneiform Tablets
Grouped in solander boxes, with annotations



105. HERMAN MELLVILLE (1819-1891). *Moby-Dick; or, The Whale*. New York: Harper & Brothers, 1851.

Client Reference Number: 99710263606621



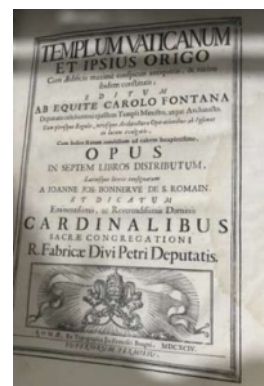
106. GALILEO GALILEI (1564-1642). *Systema Cosmicum*. London: Gallinae & Pullorum, 1663.

Client Reference Number: 99709293606621



107. CARLO FONTANA (1638-1714). *Templum Vaticanum et Ipsius Origo*. Rome: ex typographia Jo Francisci Buagni, 1694.

Client Reference Number: 9933793606621



Property from the Collection of Wells College- 32

108. THOMAS HOBBS (1588-1649) *Leviathan; or, The matter, forme, and power of a common-wealth, ecclesiasticall and civil*. London: Printed for Andrew Crooke, 1651.

Client Reference Number: 99712903606621



109. GEORGE HERBERT (1593-1633) *The Temple : Sacred poems and private ejaculations*. London: T Fisher Unwin, 1882.

Client Reference Number: 99712883606621

(No Image)

110. ANDREA PALLADIO (1508-1580) *Le fabbriche e i disegni di Andrea Palladio, e Le terme*. Venice, Appresso Bartolomeo Carampello, 1616.

Client Reference Number: 9929603606621

(No Image)

111. DANTE ALIGHIERI (1265-1321). *Divina Commedia con l'espositione di M. Bernadino Deniallo da Lucca*. Pisa: Fratelli Nistri, 1567.

Client Reference Number: 99716343606621



111. GALILEO GALILEI (1564-1642). *La operazione del compasso geometrico, et militare*. Padova: F Frambotto, 1640.

Client Reference Number: 99707113606621

(No Image)

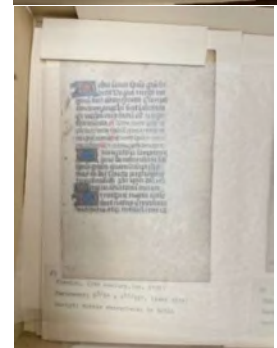
Property from the Collection of Wells College- 33

113. GEOFFREY CHAUCER (c. 1340-1400). *The Canterbury tales of Chaucer: to which are added an essay on his language and versification, and an introductory discourse, together with notes and a glossary by the late Thomas Tyrwhitt*. Oxford: Clarendon Press, 1798.
Client Reference Number: 99231443606621 (No Image)
114. SIR WALTER RALEIGH (1552-1618) *The Historie of the World, in Five Bookes*. London: Printed for R Best, In Place & Sam Cartwright, 1652. Client Reference Number: 99712643606621 (No Image)
115. Joseph Albers (1888-1976)
Interaction of Color
Screenprint in colors in folio with text, 1963
116. Jacques Callot (1592-1635)
Capricci Di Varie Figure...
The book of 48 etched plates with dedication page, 'en petit'.



Property from the Collection of Wells College- 34

117. Flemish School
Illuminated Manuscript Pages;
Together with
Dutch School
Illuminated Manuscript Page
Ink on parchment c. 1460

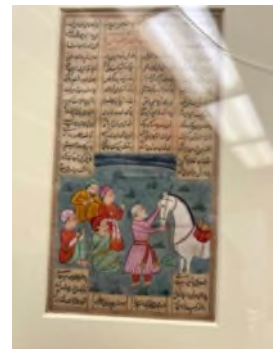


Property from the Collection of Wells College- 35

118. French School
Illuminated Manuscript Pages;
Together with
Italian School
Illuminated Manuscript Page;
and
Continental School
Illuminated Manuscript Page
Four ink on parchment c. 1410



119. Persian Manuscript Page

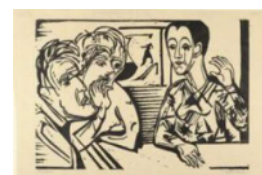


Property from the Collection of Wells College- 36

120. Remaining Contents of Rare Book Library



121. Ernst Ludwig Kirchner (1880-1938)
Conversation
Quill and ink on paper



122. Ernst Ludwig Kirchner (1880-1938)
Man Holding Die Zeitung: 8000 Tot
Woodcut

(No Image)

Property from the Collection of Wells College- 37

123. Samuel Palmer (1805-1881)
The Herdsman's Cottage; Early Plowman; and Sleeping Shepherd
Three etchings



124. Kiyoshi Saito (1907-1997)
Asyura Nara
Woodcut

125. Ernest Trova (1927-2009)
Falling Man
Wool tapestry

(No Image)

Property from the Collection of Wells College- 38

126. Two Architectural Prints

(No Image)

127. Additional Group of War Clubs



128. Raoul Dufy
Eight Untitled Works
Eight woodcut prints
One framed

