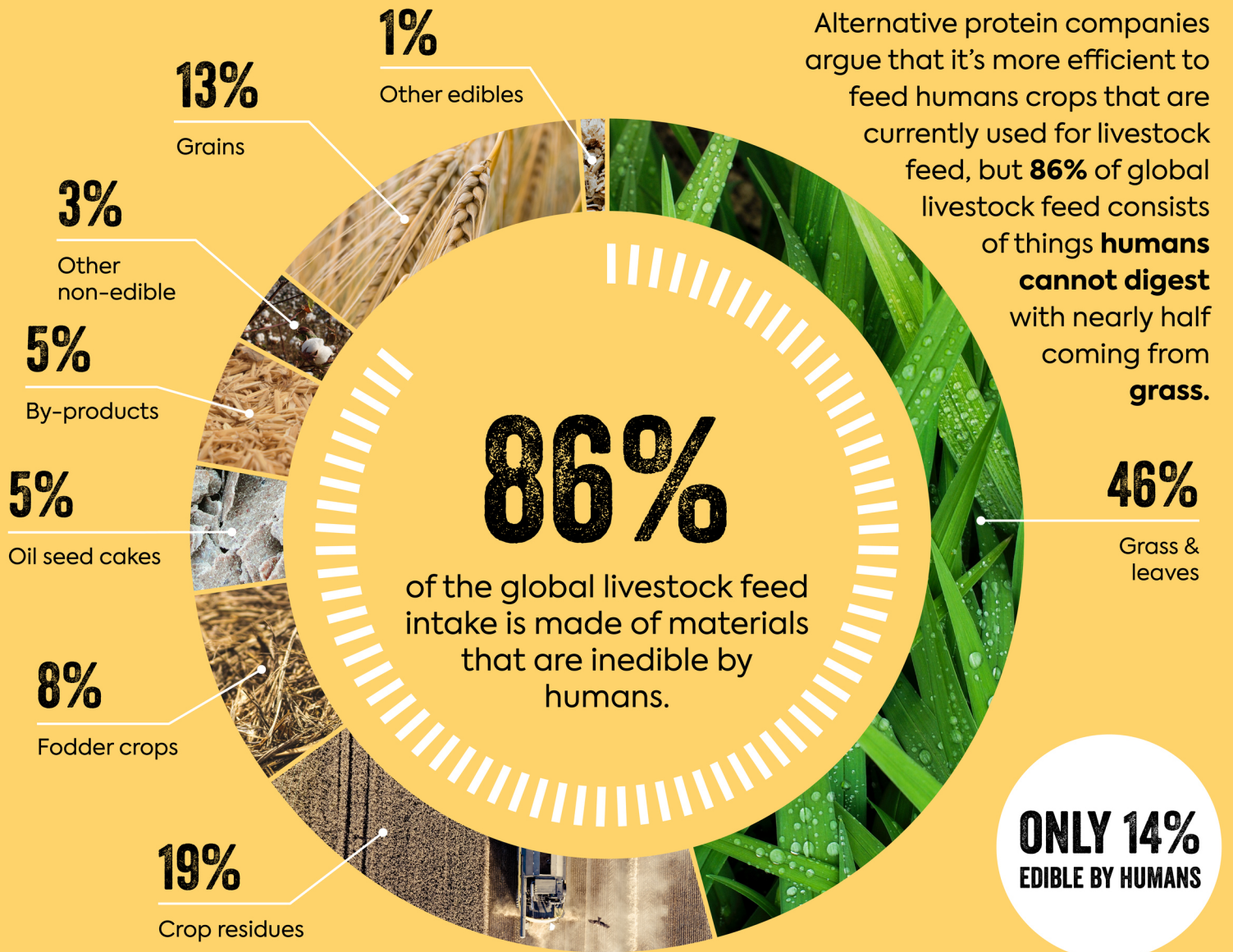


LIVESTOCK TURN FOOD WE CAN'T EAT INTO PROTEIN

@SUSTAINABLEDISH | SACREDCOW.INFO



Global livestock feed intake. Share of main feed types consumed by livestock supply chains (both ruminants and monogastric species) in 2010.¹

1. Mottet, Anne. "Livestock: On Our Plates or Eating at Our Table? A New Analysis of the Feed/Food Debate." Global Food Security, Elsevier, 10 Jan. 2017. www.sciencedirect.com/science/article/abs/pii/S2211912416300013?via%3Dihub.