

# Midwest Messenger LIVESTOCK

ROUNDUP



**Looking  
back...**

**Edward H. Grone, and his prize winner Prince Charming II (registered Tennessee Walker Stallion). He won over 33 horses in front of the grandstand, at the Wayne County Fair, Aug. 1961. (Photo courtesy Dan Grone)**

## Markets, alternative meats on Kansas Livestock convention program next month

Featured presentations about the cattle markets, how the industry is using its resources to position beef as the optimal choice over plant proteins and the continual progress being made on beef sustainability will highlight the educational program at the Kansas Livestock Association convention.

The three-day event will be held Dec. 4-6 at the Wichita Hyatt and Century II Convention Center.

CattleFax Chief Executive Officer Randy Blach will offer perspective on the cattle and beef markets during Beef Industry University. As the industry waits for one of the largest beef processing facilities, the Tyson plant in Holcomb, to come back on-line after the fire in early August, Blach will discuss packing capacity and what that means for future growth in the cattle business.

He will assess where the industry stands with herd expansion and what that means for beef supplies in 2020. Blach's outlook for the year ahead will consider grain prices, energy costs, the macroeconomy, beef exports and consumer demand for beef and its competitors.

The industry information session will feature two speakers discussing how the industry is positioning beef as plant-based protein options gain notoriety. This involves separate, but closely coordinated efforts between both the checkoff and policy divisions of the

National Cattlemen's Beef Association (NCBA).

From the checkoff perspective, Alisa Harrison, NCBA senior vice president of global marketing will outline how checkoff dollars are being used to highlight the taste and nutritional advantages of beef. High-level digital strategies and paid advertising on social media platforms are among the ways this is being accomplished.

In addition, Kansas Beef Council staff will share a video featured in the upcoming in-state checkoff campaign titled "One Simple Ingredient." The message, targeted at millennials and Generation Z consumers, provides positive differentiation for beef from meat substitutes.

The policy side of the fake meat issue will be presented by Ethan Lane, NCBA vice president of government affairs. He will outline how NCBA staff in Washington, D.C., is working to ensure all protein sources, including the plant-based varieties and cell-cultured options of the future, are produced and marketed under the same food safety and labeling standards as animal-based proteins.

The consumer trends forum, hosted by the Kansas Beef Council and Kansas CattleWomen, will feature Sara Place, sustainability consultant for Elanco

**Continued on page 20**

## Hay and Forage Minute

# Market Facilitation Program monies for alfalfa growers

By Bruce Anderson  
University of Nebraska-Lincoln Extension

Listen up, alfalfa hay growers – Did you ever think you could benefit from alfalfa exports to China? Turns out, this year there may be a back door way for all alfalfa growers to capitalize.

How so, you might ask. Well, surprisingly, you have

the trade war to thank. Because of the trade war, China imposed retaliatory tariffs and non-tariff barriers on exports of agricultural goods from the United States. This caused our federal government to develop the Market Facilitation Program, which is designed to provide financial assistance to farmers with commodities impacted by tariffs.

Soybeans are the most well-known and highest ranking among crops covered by the program. However,

prior to the trade war, China was the No. 1 importer of alfalfa hay from the U.S. As a result, alfalfa hay also qualifies for Market Facilitation payments.

You don't need to be involved with selling your hay for export. All alfalfa growers are eligible for payments, including growers who feed all their alfalfa on-farm to their own livestock. Payments are based solely on

**Continued on page 21**

## Kansas Livestock

Continued from page 19

Animal Health. She will highlight how the cattle industry has reduced its environmental footprint in recent years.

In her previous role as NCBA senior director of sustainable beef production research, Place oversaw the checkoff-funded life cycle assessment used to benchmark the sustainability of the U.S. beef industry. She has been interviewed on the subject by many major media outlets and has spoken on high-profile panels targeted at the consuming public.

An individual who takes his humor seriously will entertain the crowd at the cattlemen's banquet. Devin Henderson helps people use humor to perform at their best in the workplace. He will show livestock producers how humor can help them deal with change, stress, failure and difficult people.

Livestock association members will review existing policy and consider new resolutions during committee and council meetings at the convention. Among policy issues expected to be discussed are proper labeling of meat alternatives to better inform consumers, continued efforts to preserve and enhance the lesser prairie chicken population, trichomoniasis and the CattleTrace project. Final policy consideration will come during the general membership meeting at the end of the convention.

The trade show will feature livestock products and services on display for producers, as well as being the site for many social events and meals at the convention. A barn party will close out the trade show schedule, with entertainment by the Jared Daniels Band.

A schedule and registration information is available on [www.kla.org](http://www.kla.org) or in the November/December Kansas Stockman. All livestock producers are welcome to attend.

# Welsh Cattle Company

## 6<sup>th</sup> Annual Production Sale

Saturday November 23, 2019 at 12:30 pm

Lowderman Auction Center - Macomb, IL

Offering 85 Spring Bred Heifers & 9 Elite Show Heifer Prospects.

Including Reg. Simmental, Angus, & Commercial Cattle!

Great place to put together similar pedigreed and typed cattle bred up early in volume!

Catalogs Available Call Today!



Lot 1 - Reg. Angus Open



Lot 2 - PB SM by P2B Open



Lot 10 - Reg. Angus by Insight



Lot 18 - 3/4 SM by Lock n Load



Lot 20 - PB SM by Revival



Lot 24 - 1/2 SM by Cowboy Cut

### Sale Host:

Welsh Cattle Co.

Shannon 309-337-0175

Carson 309-333-6312

Deryl Riley, Consultant 308-962-6975

### Sale Manager:

Dwyer Cattle Services

Bob 309-337-1404

Nick 309-337-6404

### Online Videos Available at:

[www.dwyercattle.com](http://www.dwyercattle.com)

### Online bidding through:

[www.dvauction.com](http://www.dvauction.com)

*Cattle can be viewed at any time at  
Welsh Cattle, minutes from Blandinsville, IL*

*Foxy Ladies*

November 30, 2019 at 6:00 pm

West Point, NE

Call to request a catalog today!

**FELT**  
FARMS

Merlin, Delores, & James Felt

James Felt 402-369-0513

Nick Hansen 402-518-0522

[www.feltfarms.com](http://www.feltfarms.com)

Roberts Simmentals 402-369-1002

Western Cattle Source 308-430-0668

Offering 101 Lots of Reg. Simmental, Angus, & SimAngus Bred Heifers!

Offering an unbelievable set of females. You can't afford to miss this sale.

Sale managed by, Dwyer Cattle | Bob 309-337-1404 | Nick 309-337-6404



Lot 1 - 1/2 Sim by W/C Bankroll  
Sells safe to W/C Night Watch



Lot 2 - 3/4 Sim by W/C Bankroll  
Sells AI bred to W/C Night Watch

## Hay and Forage Minute

Continued from page 19

planted acres as long as conservation compliance requirements are met.

To receive payments, you do need to apply at your local Farm Service Agency office by Dec. 6. In order for your field to qualify it must contain at least 60% alfalfa. Now, at this time it's unclear how the amount of alfalfa in alfalfa-grass mixtures is going to be determined but it probably will be done locally. If you do apply, make sure you report your acres as alfalfa. Do not report it as alfalfa-grass because mixtures are ineligible for payments.

Take advantage of Market Facilitation payments for alfalfa. They may not be particularly high, but something is better than nothing.

### Soybean stubble for cows

After soybeans are harvested, cows sometimes are put out on the residues to graze. Some bean residues are even baled. But how good is this feed?

We're all familiar with the usefulness of grazing corn stalks, but I see more and more residue from soybean fields grazed every year. And cows seem to like licking up what's left behind after combining. But frankly, I'm a little concerned that some folks may think their cows are getting more from those bean residues than what

truly is there.

The problem is a matter of perception. When most of us think of soybeans, we think high protein. So we expect bean residues will be a high protein feed, too. Unfortunately, the opposite is true; soybean residue is very low in protein.

Soybean stems and pods contain only about 4-6% crude protein, well below the 7-8% needed for minimum support of a dry beef cow. And even though leaves can be up to 12% protein, it's only around one-third digestible, so that's not much help. In fact, protein digestibility is low in all bean residues.

Energy is even worse. TDN averages between 35 and 45% for leaves stems, and pods. This is even lower than wheat straw. As a result, cows fed only bean residue can lose weight and condition very quickly. Heavy supplementation is needed to maintain cow health.

Now, this doesn't mean soybean residues are worthless for grazing or even baled. They can be a good extender of much higher quality hay or silage. But, cattle must be fed quite a bit of higher energy and protein feeds to make up for the deficiencies in soybean residues.

Don't be misled into thinking bean residues are as good or better than corn stalks. Otherwise, you and your cows will suffer the consequences.

*Bruce Anderson is an extension professor with the University of Nebraska-Lincoln. Reach him at 402-472-6237.*



**LIVESTOCK RULE #2**  
ALWAYS PUT LIVESTOCK BEFORE YOURSELF, THEY  
**DEPEND ON YOU!**

Midwest Messenger  
**LIVESTOCK**  
ROUNDUP

**800-888-1380**  
[www.livestockroundup.com](http://www.livestockroundup.com)



**Connealy Angus**

**300 Bulls**  
210 Yearlings  
90 Coming 2 year olds

Monday,  
**November 25<sup>th</sup>** 2019  
(Monday before Thanksgiving)

12:00 MST  
at the ranch  
south of Whitman, NE

*We offer you:*

- Breeding Season Guarantee
- Genomic Enhanced EPDs
- Free Delivery Nationwide



[www.connealyangus.com](http://www.connealyangus.com)

Connealy Angus  
PO Box 96  
Whitman, NE 69366  
(308) 544-6552



**50 Coming Two year Old Angus Bulls**  
**Bulls developed by a Commercial Producer For the Commercial Producer.**  
***Raised in our Environment To Thrive in Yours.***

**Crawford Livestock Auction**  
**November 22, 2019 @ 1PM**  
**Crawford, NE 69339**  
**308-665-2220**

**Hague Angus Ranch LLC**  
**Josh and Josie Freiberger**  
**13702 Rd 130, Alliance, NE 69301**  
**Home • 3087621656**  
**Cell (text only) • 3087601664**



# New bill aims to strengthen labeling for U.S. beef

Jager Robinson  
Tri-State Neighbor Reporter

As livestock and agricultural markets continue to decline, legislators in Washington, D.C., have come together to work on bills aimed at improving the industry as a whole.

South Dakota Sens. Mike Rounds and John Thune introduced the U.S. Beef Integrity Act aimed at “product of the U.S.A” voluntary labeling that is currently used on beef. Rounds, who is also juggling an appropriations bill and a defense bill in the senate right now, said that protecting U.S. beef producers should be a top priority as the economy slips out from under them.

As it stands today, the USDA’s Food Safety and Inspection Service (FSIS) does not require that beef be born, raised and slaughtered in the U.S. to carry the “product of the U.S.A” label. This loophole, as Rounds called it, has caused major headaches since 2015 when country of origin labeling (COOL) was taken away.

“Today’s beef labeling rules are misleading and allow beef and beef products from cattle that are born, raised

and slaughtered in foreign countries to be labeled as U.S. beef,” Rounds said.

While “product of the U.S.A” labeling is a voluntary label that is not required for beef sold in the U.S., Rounds said he imagines a majority of foreign beef finds ways to make sure that label is placed on meat. USDA does not track or have information on what percentage of beef uses that label in the U.S.

Like most bills introduced in Washington, Rounds said it’ll be “real close to moving a mountain” to get this bill passed in the Senate, but he said he looks forward to seeing who opposes the bill and why.

“Some organizations just like the idea of being able to sell foreign products as U.S.A.,” he said in a phone interview Oct. 30.

The plus side for U.S. producers, Rounds said, is that augmenting the ruling on a voluntary label like “product of the U.S.A” should be an easier fight than requiring COOL. The World Trade Organization typically gets involved with fights over COOL, as mandatory labeling could “discriminate” against countries, he said, but “product of the U.S.A.,” as it is voluntary, should not be

subjected to the same scrutiny.

In addition to Thune’s and Rounds’ bill, Reps. Anthony Brindisi, D-N.Y., and Roger Marshall, R-Kan., introduced the Real Marketing Edible Artificials Truthfully (MEAT) Act.

This bill looks at cell-based meat being labeled as “meat” and hopes to curb a trend that has already seen many non-dairy products get labeled as “milk.” The MEAT Act does not target “product of the U.S.A” labeling, which South Dakota Farmers Union President Doug Sombke said is a mistake.

“Consumers need to know what they are eating, and this act prevents cell-cultured proteins from being labeled as meat. So, this act is an important and necessary first step,” Sombke said in a news release. “What I would like to see added to the MEAT Act is the requirement that meat also receives labeling to inform consumers where the meat they consume was raised.”

Reach Reporter Jager Robinson at 800-888-1380, email jager.robinson@lee.net or follow on Twitter @Jager\_Robinson.

# Risk management on the ranch

## Bill in Congress would fund education for ranchers, market investigation

By Jager Robinson  
Tri-State Neighbor Reporter

Facing a bleak outlook for the livestock industry, delegates in Washington, D.C., are making a point of helping Midwestern producers.

Congressmen Dusty Johnson, R-S.D., introduced a bill Oct. 23 called the Livestock Risk Management and Education Act that seeks to secure funding to better educate livestock producers on best management approaches.

The goal of the bill, Johnson said in a press conference call, is to get ranchers comfortable with risk management tools that row crop farmers have been accustomed to for much longer.

“It has less been part of the ranching culture, but moving forward it needs to be,” Johnson said.

Beyond providing resources for ranchers through local universities, the bill would push for investigations into the cattle market. Johnson said he hopes that bills like his and a few others circling Washington right now can help get the U.S. Department of Agriculture to do an in-depth investigation into the cattle market and prices that don’t seem to be adding up.

“We do need an in-depth investigation into the cattle markets,” he said. “I don’t believe all the market participants have been playing fair.”

The education portion of the bill would give \$5 million in extra resources

to land grant universities for providing information and education specifically on livestock risk management.

Matthew Diersen, a risk and business management specialist with South Dakota State University, said that any additional funding and resources can help improve their offerings.

Producers have specialized in more specific markets, and it’s been harder for SDSU and other education services to provide general risk management information, Diersen said. Because of Johnson’s bill, he hopes more focus is placed on every aspect of agriculture, not just livestock.

“One size just doesn’t fit all when managing production risk on a farm operation,” Diersen said.

Crop producers have more comprehensive insurance programs, but it really has come down to pricing cycles that have put livestock producers at a disadvantage, he added.

Cattle prices remained high when crop prices dropped off the map, and many producers kept doing what they were doing instead of seeking out additional risk management like crop producers had to do, he said. As more livestock producers start to struggle, it’s only natural that they will catch up in risk management education, according to Diersen.

“The types of risk tend to be much different,” he said.

The only thing that applies to everyone anymore is land value assessments, he said, and even that is splintering based on pasture or row crop value.


From the South Dakota Cattlemen’s Association’s perspective, Eric Jennings said that this bill can help provide funding toward helping producers identify the right risk management approaches for helping them.

“It’s certainly not a new concept, but there is a lot of new techniques and strategies we can utilize,” he said.

Jennings is the vice president of the cattlemen’s association. He said Johnson’s bill is a good step forward to get momentum and money behind the idea that the cattle market is not secure. He expects that more and more producers will begin to ask for help.

“It’s unfortunate that it comes down to that, but we all tend to change when we’re forced to,” he said.

Above all, Jennings said he is happy



*Sonderup Charolais Ranch, Inc. and Friends*

## FOUNDATION Female Sale

*Saturday, November 23, 2019 - 1 pm*




**SELLING:**  
Open Heifer Calves • Bred Heifers  
Bred Cows • Embryos  
Donor Cow Prospects

**LOCATION:** At the ranch west of Fullerton, Nebr.

**DVAuction**  
*Broadcasting Real-Time Auctions*

**SONDERUP**  
Charolais Ranch, Inc.  
Tom & Sandy Sonderup  
Fullerton, Nebr.  
(308) 536-2050 • (308) 550-0254 cell  
scrcinc@hotmail.com

View catalog & videos online  
[www.sonderupcharolaisranch.com](http://www.sonderupcharolaisranch.com)

Continued on page 23

## Risk management

Continued from page 22

to see legislators attempting to help South Dakotans.

"They are paying attention to South Dakota producers and thinking about how to help," he said, adding that he also appreciates the bill provides an avenue for producers to help themselves.

Johnson spoke at length about the bill but also touched on other agricultural issues in Washington, D.C., including country of origin and "product of the U.S.A" labeling that has been a sticking point for many producers. Johnson said both of those topics would not be included in the U.S.-Mexico-Canada Agreement like many producers were hoping.

"It's been 327 days since the administration has completed their negotiations," he said.

The RFS Integrity Act that he introduced a few months ago deals with the Renewable Fuel Standard and waivers for blending biofuels like ethanol in gasoline.

"There has been widespread disappointment with how the EPA has helped biofuel folks," he said. "I think the EPA is in violation of congressional intent and we all need more transparency and fairness."

Reach Reporter Jager Robinson at 800-888-1380, email [jager.robinson@lee.net](mailto:jager.robinson@lee.net) or follow on Twitter @Jager\_Robinson.

# FALL PRODUCTION SALE

**SATURDAY, NOVEMBER 23, 2019**  
11 AM (CST) - AT THE RANCH - 2 MILES WEST OF PALISADE, NE

**140 REGISTERED COWS & BRED HEIFERS**

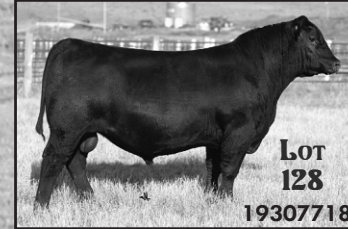
**40 LONG YEARLING ANGUS BULLS**  
DEVELOPED ON A HIGH ROUGHAGE,  
NON-STARCH DIET!

**BEAR MTN BARBARA 6574**



Selling 1/2 interest in this KG Justified donor

**BEAR MTN ASSURANCE PLUS 8715**

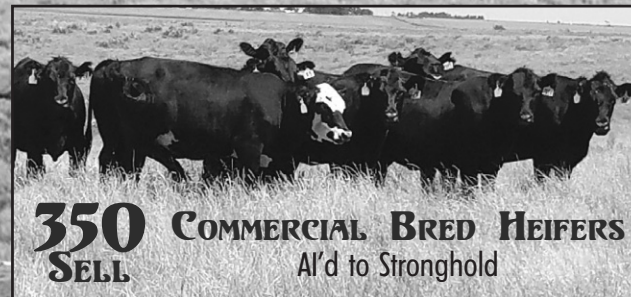


Assurance Plus x Owyhee - He Sells

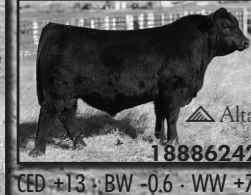
**BEAR MTN ENCHANTRESS 8529**



Titanic x Pioneer  
Sells bred to Connealy Blackhawk.



**BEAR MTN STRONGHOLD**



Alta  
CED +13 · BW -0.6 · WW +77

**SPRING  
PRODUCTION  
SALE**  
**JANUARY 29,  
2020**



For your free reference sale booklet, contact anyone in the office of the Sale Manager, AMERICAN ANGUS HALL OF FAME (816) 532-0811 [angushall@angushall.com](mailto:angushall@angushall.com)

**BRIAN & TIFFANY STOLLER · 35789 Hwy 6 · Palisade, NE 69040**  
(308) 285-3313 · (308) 737-6213 cell  
[bearmtnangus@msn.com](mailto:bearmtnangus@msn.com) · [www.bearmountainangus.com](http://www.bearmountainangus.com)

## LIVESTOCK CALENDAR

NOVEMBER	PAGE				
8	Burwell Livestock Market, Special Bred Cow & Heifer, Burwell, Neb.	12	Creighton Livestock Market, Feeder Calves, Creighton, Neb.	15	Dunlap Livestock Market, Special Calf/Yrlg, Dunlap, Iowa
8	Dunlap Livestock Market, Special Western Iowa Preconditioned Calf, Dunlap, Iowa	12	Philip Livestock Auction, Special All Breeds Cattle, Philip, S.D.	15	Ft. Pierre Livestock, Big Special Calf & Yrlg, Ft. Pierre, S.D.
8	Fullerton Livestock Market, Special Feeder Calf, Fullerton, Neb.	13	Albion Livestock, Cattle Sale, Albion, Neb.	15	Fullerton Livestock Market, Special Feeder Calf, Fullerton, Neb.
8	Lexington Livestock Market, Special Calf/Feeder, Lexington, Neb.	13	Bassett Livestock Auction, Special Spring Calf & Yearling, Bassett, Neb.	15	Lexington Livestock Market, Special Calf/Feeder, Lexington, Neb.
8	Ft. Pierre Livestock, Big Special Calf & Yrlg, Ft. Pierre, S.D.	14	Broken Bow Livestock, Special Calf and Feeder Auction, Broken Bow, Neb.	15	Warner Beef Genetics Genetic Opportunities Sale, Arapahoe, Neb.
8	Wahoo Livestock Sales, Special Calf & Yearling/Appreciation BBQ, Wahoo, Neb.	14	Columbus Sales Pavilion, Feeders Sale, Columbus, Neb.	16	Woodhill Farms Angus Female Sale, Viroqua, WI
9	Ft. Pierre Livestock, Special Bred Cow & Hfr, Ft. Pierre, S.D.	14	Denison Livestock, Western Iowa Preconditioned Sale, Denison, Iowa	16	Ericson Spalding Livestock, Special Cattle, Ericson, Neb.
9	Ericson Spalding Livestock, Special Cattle, Ericson, Neb.	14	Ogallala Livestock Auction Market, Special Calf & Yearling, Ogallala, Neb.	16	Ft. Pierre Livestock, Special Bred Cow & Hfr & Fall Pairs, Ft. Pierre, S.D.
9	Sx3 Angus Dispersion, Kearney, Neb.	14	Valentine Livestock Market, Spring Special Calf, Valentine, Neb.	18	Valentine Livestock Market, Special Bred Female, Valentine, Neb.
11	Huss Livestock Market, Special Calf & Feeder, Kearney, Neb.	14	West Point Livestock Market, Special Bred Female/Pair, West Point, Neb.	19	Ericson Spalding Livestock, Special Bred Cow & Heifer, Ericson, Neb.
12	Atkinson Livestock Market, Anniversary	15	Burwell Livestock Market, Special Spring Calf, Burwell, Neb.	22	Hague Angus Ranch Forage Raised Bull Sale, Crawford, Neb.
				23	Bear Mountain Fall Female & Bull Sale, Palisade, Neb.
				23	Sonderup Charolais Ranch, Annual Female Sale, Fullerton, Neb.
				25	Connealy Angus, Fall Bull Sale, Whitman, Neb.
				30	The Event Simmental Sale, Tecumseh, Neb.
					<b>DECEMBER</b>
				2	TK Angus, Fall Female & Bull Sale, Valentine, Neb.
				6	Evans Cattle Co Annual Bull & Female Sale, Cozad, Neb.
				6	Cowboy Kind Female Production Sale, Wes Point Livestock, West Point, Neb.
				7	Lonesome River Ranch Annual Angus Bull & Female Sale, Anselmo, Neb.
				12	T&S Strnad Charolais & Friends Sale, Formosa, KS
				15	Nebraska Platinum Standard Sale, Wymore, Neb.
					<b>JANUARY</b>
				27	APEX Cattle, Age Advantaged Bull & Bred Heifer Sale, Dannebrog, Neb.

## FENCING

CCA treated posts, railroad ties by truck load or bundle.  
Oberg Hi-Way Equipment  
Bartlett-NE 308-654-3441

Used Oil Well Sucker Rod & Pipe. Also fiberglass rod.  
Jim Boyles 308-870-1119  
or 308-732-3356

## BEEF CATTLE

250 BK 3-4 yr. bred cows, to calve in March 2019, Available Oct/Nov  
308-380-3676 402-744-4571

50 black cows, 2-4 calves, bred black, start calving March 15.  
(402)340-6061.

## BEEF CATTLE

85-Fancy, Gentle Red-Angus Heifers, AI'd, due 3-5-2020.  
17-Red second-calf, due 3-1  
38 Special black hided Red cross AI'd Angus 3-5-2020,  
Sell any number  
Jim Ramm: 402-340-3238

Angus & SimmXAngus Bulls: Coming 2's, Falls & Yearlings. Top quality, reasonable. Records available. Gentle disposition.  
Rick Wetovick.  
Fullerton-NE.  
(308)550-0628.

## BEEF CATTLE

BULLS FOR SALE: Angus & Polled Hereford. Some suitable for heifers. Complete performance info and EPDs available.  
Frenzen Angus & Polled Herefords, Fullerton-NE.  
Galen: 308-550-0237 or Eric: 308-550-0238

For Better: POLLED HEREFORD BULLS: Big growthy, muscular, semen-tested, calving ease, guaranteed.  
Jack Beeson, Wayne/NE  
www.jbranch.net  
(402)375-3404,  
(402)375-9027.

## BEEF CATTLE

For sale or lease: 20 head purebred short horn first calf heifers. Calve 3-1-2020. (402)750-4751.

For Sale or Lease: Complete dispersion of 340 home raised Angus Cows, 3 - 9, more than 1/2 have IA influence, bred to Angus Simental X bulls, calve late March. Grass available for them also. 308-520-5130

Gelbvieh Balancer Bulls, buy or lease. Red&Black 1-3 y.o. Triple N Gelbvieh. Deane: (402)641-6900, Jared: (402)843-8276.

Looking to take in cattle for fall & winter grazing. Could possibly calve out, if needed. (402)340-1824.

LSR Available Online!  
www.livestockroundup.com

## BEEF CATTLE

Herford / Black-White face Heifers, bred to Angus bulls. Many AI'D can shorten to shorter intervals, sell any number.  
Melcher Herford Inc.  
Don-402-336-7194,  
Kevin-402-340-6189,  
Matt-402-336-8182

RED ANGUS BULLS  
Good Selection,  
Calving Ease, Growth  
KK Farms-Osborn, MO  
816-675-2503,  
cell: 816-390-4988

Registered Angus Fall & Yearling Bulls. SAV Genetics. Gentle disposition. Reasonable.  
Scott Angus Cattle  
308-550-1726

Registered Angus since 1951, Angus bulls. Lazy Black Diamond, Glause family, Palmer NE. Kevin (308)750-9055.

## FT. PIERRE LIVESTOCK

FT. PIERRE, SD • 2 SALES THIS WEEK

**Friday, November 15th**  
**Big Special Clf & Yrlg Sale**  
**9,500 to 10,000 High Quality Clvs & Yrlgs**  
**Yrlgs 9 AM CT – Clvs 10 AM CT**

## Yrlgs

Fuoss, 110 B, Bwf str 900-1000  
Fuoss, 25 B, Bwf PO hfrs 900-1000  
Fuoss, 15 B, Bwf spay hfrs 800-850  
Baade, 20 B, Bwf str & hfrs 700-825  
Various cons, another 100 to 250 B, Bwf & Red PO hfrs 800-1050  
Plus many more yrlgs by sale day.  
Calves (300-725#) – all had fall shots – large number not implanted  
Many outstanding replacement hfrs!

Finley, 550 Blk (AIT) 550-700  
Zweber, 550 Blk (AIT) 450-600  
Lake, 460 Char X (90 Blk) 450-625  
Peterson, 300 B, Bwf 500-600  
Peterson, 190 Rd Ang-Ch X 525-625  
Bowman, 450 Char/Blk 500-625  
Tibbs, 350 B, Bwf (front end in town) 475-600  
Hanson, 300 Ang (AIT-NB) 450-575  
Worth Bros, 300 Red/Char X 550-650  
Mathews, 300 B, Bwf (AIT) 400-550  
Bad Nation, 300 Blk (AIT) 475-575  
Jensen, 250 Blk 500-650  
Banning, 235 Char X 500-625  
Banning, 15 Char 650-750  
Keegan, 235 Blk 500-600  
Reichert, 220 Blk (AIT) 500-600  
O'Dea, 220 Blk (AIT) 450-550  
O'Neal, 220 Blk (DF) 450-550  
Kinsley, 200 Blk str 500-600  
Tolton, 200 Char/Blk 500-600  
B/C Worth, 200 Blk Ang 500-650  
Mowry, 200 Ang 475-600

Plus many more clvs by sale day! Lots of 3 & low 4 wts.

## Saturday, November 16th

**Special Bred Cow, Hfr & Fall Pairs Sale**  
**Big Run Weighups 9 AM CT – Bred Cattle 1 PM CT**

Fuoss Ang Commercial Hfr Disp, 300 Ang & 1st X Bwf hfrs (950-1050)  
120 hd AI'd Varilek Confidence, clf 3-5 (1 day) 180 hd bred LBW Fuoss Ang, clf 3-12 (15 day intervals)  
Berger, 100 Red Ang hfrs (1050) bred LBW Leland Red Ang, clf 4-20 (20 day intervals)  
Berger, 145 Blk cows (coming 3's, few 4's) bred Helbing Hereford, clf 4-2 (45 days)  
Keegan, 14 Ang hfrs (950-1000) bred LBW Jorgenson Ang, clf 4-1 (45 days)  
Jahner & Hondo, 100 Blk & Red cows (4-8's) bred Blk, clf 3-1  
McQuiston, 25 Blk BM cows., bred Blk, clf 3-12  
Knippling, 30 Blk BM cows, bred Blk, clf 4-20  
Jahner & Hondo, 110 B, Bwf & Red Fall pairs (3 to BM)  
Various Cons, 200 to 300 B, Bwf & Red cows (SM-BM) mostly bred Blk.  
Plus many more by sale day.

Our website is updated daily, for current listings check our website.

For more information call:

or 1-800-280-7210 or visit our web site at [www.ftpierrrelivestock.com](http://www.ftpierrrelivestock.com).

Sales broadcast on live bid format at [www.cattleusa.com](http://www.cattleusa.com)

Dennis Hanson Bryan Hanson Willie Cowan Sale Barn  
605-223-2575 605-280-1283 605-280-1021 605-223-2576

## SALE BARN

## SALE BARN



Tuesday, November 12<sup>th</sup> Auction  
**ANNIVERSARY CALF AUCTION**

NO - Slaughter Cattle  
11:00 a.m. – Odd Lots

12:00 Noon – R-Calf USA Rollover Auction followed by  
Spring Calves & Yearlings

Calf is donated by Bernard Kamphaus  
Coffee & Cookies courtesy of the O'Neill Vet Clinic

## Yearlings

9 Blk & Bwf str & hfrs, 800 -900# ..... Jenifer Rothchild

## Spring Calves

250 Blk & Bwf str, PC 600-650# ..... Sobotka Cattle & Hay  
190 Blk str & hfrs, PC 450-600# ..... Tasler Ranch  
180 Blk & Bwf str. & hfrs, PC, 450-600#... Greg, Laurie & Nick Hansen  
160 Blk & few Red str & hfrs, PC 525-600#..... Dave Slaymaker  
150 Blk str & hfrs, PC, 500-600#..... Welsh Ranch  
130 Blk & Bwf str, PC, 500-650#..... Doug Wrede  
120 Blk & Bwf, str & hfrs, PC, 425-575#.....

Lee Schrader & Monty Neiffer

100 Blk & Bwf str, PC, 550-700#..... Rod & Juli McCumber  
100 Blk str, PC, 500-550#..... Karo Cattle Co  
90 Blk & Char str & hfrs, PC, 550-650# ..... Don Rech  
65 Blk & Char str, PC, 575-750# ..... Todd & Aaron Seger  
60 Blk str, PC, 500-650#..... Mike Laible  
60 Blk & Bwf, str & hfrs, PC, 500-650#..... Matthew Frickel  
60 Blk & Bwf str & hfrs, 400-500# ..... Easton Ertz  
50 Blk str, PC, 475-575#..... Troy & Tad Judge  
50 Red & Blk Angus str, PC, 450-600# ..... Kirk Sholes  
50 Blk str & hfrs, PC, 450-500#..... Greg Straka  
50 Blk Angus str & hfrs, PC 500-700#..... Elsberry & Hampton  
45 Blk str, PC, 500-650#..... Tim Laible  
40 Blk str & hfrs, PC, 550-600#..... Richard & Nancy Albrecht  
40 Blk str & hfrs, PC, 500-600#..... Clinton DeVall  
32 Blk str (23) & hfrs (9), PC, 400-550#..... Joe & Laura Olson  
30 Blk str & hfrs, PC, 450-600#..... Frank Dorcey  
30 Blk Str, 650-700# ..... Jim & Cindy Carlson  
25 Blk & Bwf str & hfrs, PC, 500-650# ..... Rollie & Grant Wallinger  
25 Blk str & hfrs, PC, 550-650#..... Alan Tooker  
24 Blk & Bwf str & hfrs, PC, 500-600# ..... Scott Schultz  
20 Blk str & hfrs, 450-600#..... Kerry Barthel  
15 Blk & Bwf str & hfrs, PC, 500-600# ..... Vernon & Gene Frasch  
10 Blk str, PC, 550-600#..... Leland Johnson  
8 Angus/British White Crossbred str & hfrs, PC,  
600-650# ..... Ron & Judy Stearns

Thursday, November 14<sup>th</sup>, Regular Auction – Slaughter Cattle at 9:00 a.m.

View our auctions live on the Internet at [www.CattleUSA.com](http://www.CattleUSA.com)

"Our Desire is to be of Service to You"

The Old Reliable, Inc. - Atkinson, NE

[www.AtkinsonLivestock.com](http://www.AtkinsonLivestock.com)

Office: 402.925.5141 | Fax: 402.925.2727

ALM@AtkinsonLivestock.com

Wes Kilmurry, Manager | 402.340.4225

Wes@AtkinsonLivestock.com

## SALE BARN

## SALE BARN

## Valentine Livestock Auction

**Thursday, November 14, 2019**  
**Special Spring Calf Sale**  
(weaned & non-weaned) • S.T. 12:30 p.m. Expecting 3600 hd

## Valentine Livestock Health Protocol 2019

#4: 7-way (2), 5-way viral (spring & fall), pastuerella, and poured or injected w/ivermectin (fall) #3: 7-way (2), 5-way viral (spring & fall), pastuerella, no pour on #2: 7-way (2), 5-way once #1: 7-way only

## Listings:

300 angus & blk NI weaned 40 days 525-675#.....Gene & Wade Buechle #4  
280 blk, few blk str weaned 45 days Gardiner sired 500-650#.....Charles & Ted Ferguson #4  
100 angus NI weaned 600-700#..... Joseph Angus Rn #3  
40 angus str NI weaned 60 days 650-700#..... Leroy Logterman  
180 ang str NI top end of 300 Joseph sired 625-675# .....Dewing & Gudge #4  
120 angus (75s-45h) NI Howard genes 500-675# ..... Kory & Becky Hossle #3  
370 angus & blk Baldridge & Assman genes 450-550# ..... Matt Harvey  
143 bwf(70) & hfd(73) NI on hfrs 400-525#..... McNare Family  
100 angus & blk, few rd NI Raven Angus sired 500-650# ..... Tribal Ranch  
300 blk-x & rd-x (200s-100h) NI (75 blk-x hfrs not topped)  
500-625#..... Duck Bar (K Willert) #4  
200 bwf (F-1) (160 hd) & blk, hfrs not topped Leachman.475-620#..... Avery & Liz May #4  
350 rd angus (90%) & char-x (250s-100h) NI 500-675# ..... Stoddard Ranch #4  
175 blk, bwf, few rd NI (85s-85h) 500-600#..... Rolland & Ronnie Sharkey #4  
100 blk, blk-x, few rd hfrs not topped 500-650#..... J Gregg & K Kersten #4  
110 blk, bwf (80s) & char-x(30) 500-600#..... Dustin Schmidt Family #4  
90 blk, bwf str NI Logterman genes 1 Id 600-650#..... Matt & Kara Walking #3  
65 blk & angus str 625-675# ..... Duane & Mark Sedlacek #4  
60 blk hfrs NI 500-550#..... Tom Cox, Jr #4  
83 angus (45s-38h) NI Logterman sired 500-625#..... Jean Graeff RFT #2  
80 blk, bwf NI Raven & Sitz Angus sired 500-600# ..... Brian Lafferty  
75 angus & blk (45s-30h) NI angus A.I. sired 500-575# ..... Greg & Amanda White #4  
41 angus & blk 23s-18h) NI 500-600# ..... Bar S (JD Ross) #4  
65 simm-x NI 400-550# ..... Art & Dwyane Dubs  
62 blk (32s-30h) 400-550# ..... Trent Colburn  
40 mixed-x 500-600# ..... Bryan Kienke #3  
31 ang (15s-16h) NI not topped Barstow genes ..... Lorraine Worth #4  
Plus more from J. Cox(16), Schmit(20), Miller(25), P. Miller(30)

## Monday, November 18, 2019

## SPECIAL BRED FEMALE &amp; REGULAR SALE

## Listings:

62 blk hfrs (900-1000#) 31 hd A.I. bred angus (Connealy Irish); cf 2-25 for 3 days, 31 hd cleaned up angus (sons of Babcock) for 45 days ..... Dusty Hunt  
100 angus (3-8 yrs) bred angus (Joseph); cf 4-1 ..... Joseph Angus Rn  
40 blk & Hereford blk bred Hereford, rwf bred blk; cf 2-5 for 60 days ... Pending

1-800-682-4874 or (402) 376-3611 • [www.valentinelivestock.net](http://www.valentinelivestock.net)  
Greg Arendt, Mgr. 402-376-4701 • Greg Nielsen, Fieldman Cell:  
402-389-0833 Jake Hopwood • Fieldman Cell: 308-627-4828

## BEEF CATTLE

Selling Tuesday, November-19th; Atkinson Livestock Market, 193 first-cross BWF and Hereford calves out of horned Hereford cows w/extra growth and milk crossed w/top of the line Angus Bulls. Including:90-BWF steers 625#-650#; 13-Hereford steers 625#-650#; 90-BWF top end replacement quality heifers 600#. Jeff or John Skrdla. 402-340-1680, or 402-340-4011

## BEEF CATTLE

Stalks available for up to 700 head. Will take any number. 75 cents per head per day FULL CARE. (402)469-0136. (402)410-0376.

## BISON/ELK

For Sale: Buffalo variety of male's female and calves. Good stock. 402-239-0163

## SALE BARN

## SALE BARN

### DENISON LIVESTOCK AUCTION

#### Western IA P PreConditioned Sale

THURSDAY, NOVEMBER 14<sup>TH</sup> 11:30 A.M.

Expecting 1700 cattle • All calves G.T. vac (many X2) & weaned

150 Bl SH 550 - 750	60 Bl/Char X SH 500 - 650
150 Bl SH 550 - 750	50 Bl SH 475 - 575
150 Bl SH 500 - 700	43 Bl SH 500 - 650
145 BWF SH 450 - 650	40 Bl SH 450 - 600
Replacement Quality	38 Mellow Yellow Butterscotch SH 525 - 625
75 Bl SH 450 - 650	38 Bl SH 650 - 850
65 Bl SH 500 - 700	36 Bl SH 400 - 600
65 Bl SH 600 - 800	35 Bl/BWF SH 425 - 550
63 Bl SH 600 - 800	

Early Ad...Call for latest consignments

Expecting 300 - 500 late consignments of cattle weighing 400# - 900#

Denison, Iowa 51442 • www.denisonlivestock.com  
Barn, 712-263-3149 • Jr. Cell, 712-269-7777

## SALE BARN

## SALE BARN

### Lexington Livestock Market, LLC

OFFICE: 308-324-4663 • www.lexlivestock.com • Lexington, NE

November 15<sup>th</sup> 2019

#### Special Calf/Feeder Auction 2000 HEAD

Butcher Cows 8:00 AM\*Calves/Feeders @11:30 am

(#2 - 7 Way, 4 Way & Pasturella, #4 - #2 with Booster, P - Poured & W - Weaned

#### FEEDERS

100 Red Angus & Rwf Strs & Hfrs (all natural)  
no implant 575-650 #4PW.....CAIN LAND & LIVESTOCK  
24 Angus Yrl Heifers 700-750 #4PW.....MORGAN MEIER

#### CALVES

475 Angus (350) & Certified Red Angus (125).....ROGER & JUDY,  
Steers & Heifers (rep-quality) 500-650 #2P.....CHRIS & SARAH RUSSELL  
250 Red Angus & Angus Steers & Heifers 550-600 #2P.....ELDON & KIM  
SCHIPPORREIT  
220 Angus & Simm Steers & Heifers 550-700 #2P...MORGAN & BROCK MEIER  
180 Angus & Bwf Steers & Heifers-no implants 450-600 #2P.....MIKE &  
BILL DAWSON  
175 Angus & Bwf Steers & Heifers 600-725 #2P.....DOUG & ERIC SINDT  
160 Angus & Angus X Steers & Heifers 475-600 #2P.....KIM & DENISE  
WOODWARD  
90 Angus & Angus X Steers 550-650 #2P.....ASH CREEK RANCH  
80 Angus & LimX Steers & Heifers 300-500 #2P.....CAROL HAUMONT &  
THOMAS RICHTER  
60 Angus & Sim X Steers & Heifers 400-550 #2P.....WYATT SMITH  
31 Angus Steers & Heifers 450-600 #2P.....DAVID ELSE  
20 Angus Steers 450-550 #2P.....DENNIS REED  
12 Angus Steers & Heifers 500-650 #2P.....JERRY REMINGA

SPECIAL CALF AUCTION\*NOVEMBER 22<sup>ND</sup>

NO CATTLE AUCTION\*NOVEMBER 29<sup>TH</sup>

OFFICE 308-324-4663 www.lexlivestock.com  
RICK SHOEMAKER, OWNER 627-7284; Jeff Rogers 325-1272  
Jeff Marshall 233-4633, Ryan Rogers 325-1273  
Dean Dallman 380-2615, Gary Cook 870-0414  
Geoff Cook 870-2791, Brian Eberle 440-4798

## SHEEP/GOATS

For Sale: Yearling Katahdin & Doeset's \$125 a head take all or pick 402-620-1010

Ram lambs and yearling rams for sale. \$150-\$250 Suffolk breeding. (712)899-8645.

## SALE BARN

## LIVESTOCK EQUIPMENT

For Sale: Priefert squeeze chute. Good shape. \$650/OBO. (402)641-1978.

Open cattle shed 12'x20'. Like new. \$3,600. (402)360-0975.

## SALE BARN

### FULLERTON LIVESTOCK MARKET, INC.

Sale Barn 308-536-2436 • Fullerton, Nebraska

#### Special Feeder Calf Sale

#### FRIDAY NOVEMBER 15, 2019-12PM!

160 Blk str & hfrs, S & F vacc., 550-750#.....Brandes Bros.  
100 Char-x & Blk str & hfrs, S & F vacc., 500-700#.....Butch & Jacob Ahlers  
35 Blk str & hfrs, S & F vacc., 550-650#.....Tim Choat  
33 Blk-bwf str & hfrs S & F vacc., 450-600#.....Layne Hanquist  
32 Blk-bwf & few x-bred str & hfrs, S & F vacc., 550-700#...Randy Christensen

TO HAVE SOMEONE LOOK AT YOUR LIVESTOCK, CALL:

KEN RIEKEN, 308-550-0214, KC RIEKEN, 308-550-0113

TOM ENGEL, 402-747-6777, TRENT ENGEL, 402-750-6582

ROGER KEIL, 402-735-7475, CHASE RIEKEN, 308-550-1805

Visit us on the web at www.fullertonlivestockmarket.com

View our sales live at cattlousa.com

## SALE BARN

## SALE BARN

### PHILIP LIVESTOCK AUCTION

Philip, South Dakota • 605-859-2577

TUESDAY, NOVEMBER 12, 2019

SPECIAL ALL-BREEDS CALF SALE

Estimating 7,000 Head

Sale Time 9:00mt

CALVES: fs=fall shot, ni=no implants

Sanders Ranch 600 Char x & a few Blk clvs; fs, ni 550-650#  
Edoff 500 Blk, Bwf & Herf clvs; fs, ni 500-550#  
Coomes 500 Bwf & Herf str; fs, ni 600-650#  
Richter & Kelly 300 Char x clvs; fs, ni 500-600#  
Sampson 300 Blk clvs; fs, ni 550#  
S & R Porch 300 Blk clvs; fs, ni 500-550#  
Watkins Ranch 300 Bwf clvs; fs, ni 450-550#  
Peck 300 Blk, Bwf, & Char x clvs; fs, ni 550-650#  
Roghair 220 Blk & Bwf clvs; fs, ni 400-525#  
Robertson 200 Blk mostly str; fs, ni 500-600#  
Boomer 200 Red Ang mostly str; fs, ni 600#  
A Consignment 200 Blk & Bwf clvs; fs, ni, all natural 525-600#  
Guptill 200 Blk str; fs 600#  
Jones & Sons 200 Blk & Bwf str; fs 550-600#  
McPherson 200 Blk clvs; fs, ni 500-600#  
Stout 160 Blk clvs; fs 700#  
Cammack 150 Blk & Bwf hfrs; fs 450-550#  
Wiebers Ranch 150 Blk & Bwf clvs; fs, ni 550#  
Paulson 150 Blk clvs; fs 600#  
Julson 150 Blk clvs; fs, ni 500-525#  
Martin 150 Blk clvs; fs 600-650#

ADDITIONAL CONSIGNMENTS OF 1,600 HEAD OF CALVES IN  
CONSIGNMENTS OF 23 TO 120 HEAD WEIGHING 500-650#.

GO TO PHILIPLIVESTOCK.COM VIEW SALES LIVE ON THE INTERNET.  
ALSO TO VIEW UPCOMING SALES & CONSIGNMENTS ON THE INTERNET  
GO TO PHILIPLIVESTOCK.COM OR ON THE DTM - CLICK ON SALE  
BARN NORTH CENTRAL.

MORE CONSIGNMENTS BY SALE DAY.

FOR MORE INFORMATION CALL THOR ROSETH AT 605-685-5826,  
JEFF LONG AT 605-515-0186 OR OFFICE AT 605-859-2577.

## LIVESTOCK EQUIPMENT

New Tub w/11ft alley, chute & formost headgate;New 10ft Tub w/25ft alley. BG Custom Welding-605-881-7631

## SALE BARN

## FEED/HAY

For Sale: Lg. round hay and cornstalk bales. Call: (308)627-4691.

## SALE BARN

### DUNLAP LIVESTOCK

SPECIAL CALF/YRLG AUCTION  
FRIDAY, NOVEMBER 15TH @ 10:30AM - 1500 HD

220 Fancy Holstein Strs 850#, single source, vac X2 long time fed	70 Fancy Rd Angus S/H 450-500#, g.t. vac.
175 Mostly Blk S/H 400-500#, vac X 2	60 Blkx Strs 850#
150 Angus S/H 400-500#, vac X 2	55 Blk Sim S/H
125 Blk S/H 750-850#, all shots	50 Blk & Xbrd S/H 450-550#, g.t. vac
110 Blk X S/H 1000#	50 Blk S/H 550#, g.t. vac
85 Mostly Blk S/H 400-600#, vac & weaned 60 days	8 P. B. Hereford Bclf 850#, LBW, papers avail.
	5 Bwf S/H 600

701 Hwy. 30 W, Dunlap, IA 51529 • www.dunlaplivestock.com

Office 712-643-5761

Jay Schaben 712-269-1820

Don Stessman 712-263-7505

Jim Schaben Jr. 712-263-9449

Jon Schaben 712-263-0755

Cody Schaben 712-592-1281

## SALE BARN

## SALE BARN

### HUSS LIVESTOCK MARKET, LLC

Kearney, Nebraska • Market Office 308-234-2502

www.hussauktion.com

MONDAY NOVEMBER 11TH

BUTCHER COW AUCTION 9:00 AM

WEDNESDAY NOVEMBER 13th • 3500 CATTLE  
SPECIAL CALF & FEEDER AUCTION 10:30 AM

#### FEEDERS & WEANED CALVES

150 Angus Simm X Heifers-Rep Quality 550-675 #4PW.. WAYNE, JEFF & DAX FOUTS  
140 Angus Steers & Heifers 450-575 #2PW.....RANDY & BRAD DALLMANN  
140 Angus Red Angus X Steers & Heifers 450-675 #4PW.....ERIC WENDELIN  
70 Angus Gelv X Steers & Heifers 750-900 #4PW.....RICK ALBER  
60 Angus Gelv X Steers & Heifers 750-900 #4PW.....DAN & DANNY ALBER  
55 Hereford Bwf Steers & Heifers 550-650 #4PW.....KEVIN & LANAYA TUREK &  
KENT ZELLER  
44 Angus & Char X Steers & Heifers 550-700 #4PW.....JEFF ALBERS  
40 Red Angus Angus Steers & Heifers 600-750 #4PW.....CLAY & LINDSAY MEAD  
21 Hereford Steers & Heifers 450-600 #4PW.....BRUCE ZELLER  
CALVES  
310 Angus Simm X Steers & Heifers 625-775 #2P.....HIDDEN VIEW RANCH  
-MARVIN, BETTY MIKE & JAMES POSS  
230 Angus Steers & Heifers 500-625 #2P.....LARRY KOSSE  
160 Angus Bwf Steers & Heifers 450-600 #2P..WAYNE, BECKY & BRANDON SHAFTO  
156 Angus Steers & Heifers 450-600 #2P.....DAKOTA FOREMAN & KEVIN SMITH  
130 Angus Steers & Heifers 350-600.....DAN & MISTY KILLOUGH & DALLAS MUES  
120 Angus & Angus X Steers & Heifers 450-600 #2P.....BENTLEY RANCH LLC  
120 Char X Steers & Heifers 500-650 #2P.....JAMIE & MELISSA WELLS  
100 Angus Steers & Heifers 400-550 #2P.....JOHN ANGUS FARMS  
100 Angus Steers & Heifers 400-550.....PHYLIS BROADFOOT & SONS  
90 Angus Steers & Heifers 500-650.....LARRY & JASEN NICHOLS  
90 Angus Steers & Heifers 450-600 #2P.....LOREN & BEN HOLL  
85 Bwf & Angus Steers & Heifers 550-650.....DDR FARMS  
80 Red Angus Steers (70) & Heifers 500-650 #2P.....HOSTELER BROS  
70 Angus few Red Angus Steers & Heifers 500-700 #2P.....JIM OSTERMEIER  
60 Angus X Steers & Heifers 500-600 #2P.....NATE BRAVEC  
52 Angus & Bwf Steers & Heifers 550-650 #2P.....DON JANITSCHKE  
50 Angus & Angus X Steers & Heifers 450-600 #2P.....BRIAN DITTMAR  
45 Angus X Steers & Heifers 550-650 #2P.....JEROME ECKHOUT  
43 Angus & Red Angus Steers & Heifers 450-600 #2P.....JOSH DALBY  
40 Angus Steers 500-700 #2P.....PARR CATTLE CO  
35 Angus Steers & Heifers 550-650 #2P.....JIM BRANDT  
29 Angus Steers & Heifers 400-600 #2P.....WES & NIKKI KENNEDY  
25 Angus Steers & Heifers 500-650 #2P.....GREG RASMUSSEN  
20 Angus Simm X Steers 700-800 #2P.....JIM KOENIG  
16 Angus Red Char X Steers & Heifers 425-575.....KAREN FOSTER

SPECIAL FEEDER AUCTIONS:

November 20<sup>th</sup> December 4<sup>th</sup>, 11<sup>th</sup> & 18<sup>th</sup>

SPECIAL BRED COWS & HEIFERS November 27<sup>th</sup> December 9<sup>th</sup> & 16<sup>th</sup>

RICK SHOEMAKER 308-627-7284

# GOT LIVESTOCK?

Are You Ready to Have a Sale?  
We're Ready to Help!

Livestock Roundup Provides  
**THE BEST**  
in Livestock Marketing  
and Services.



**Chris Beutler**

**402-380-8244**

**cabonthego@yahoo.com**



**800-888-1380**

**FEED/HAY**

**Hay For Sale:**  
Big round alfalfa bales.  
Never rained on. Very  
leafy, excellent quality.  
Big round cane bales.  
Tested safe.  
**(308)390-7949.**

**Livestock Roundup  
Classified.**

The perfect place to reach the  
entire ag-related market in the  
midwest.

**Call 1-800-888-1380**  
to place yours today!

**FEED/HAY**

**HIGH QUALITY  
CORN STALKS.**  
4,000+ baled cornstalks  
for sale. Baled only what  
came through combine.  
Extremely clean. Higher  
feed value.  
Going fast. Call for  
pricing/delivery options.  
South central Nebraska.  
Grady Johnson:  
**(308)991-9442.**

**LSR Available Online!**  
[www.livestockroundup.com](http://www.livestockroundup.com)

**SALE BARN**

**SALE BARN**

**EMPLOYMENT**

Semi truck driver wanted  
to haul livestock.  
Immediate opening.  
Pay based on experience.  
**(605)760-7769.**

**Livestock Roundup  
Classified.**

The perfect place to reach the  
entire ag-related market in the  
midwest.

**Call 1-800-888-1380**  
to place yours today!

*It's Simple. It's Effective. It's Affordable.*

Midwest Messenger Classified Get Results!  
**1-800-888-1380 • [www.midwestmessenger.com](http://www.midwestmessenger.com)**

**SALE BARN**

**SALE BARN**

**WEST POINT LIVESTOCK AUCTION**

**MONDAY NOVEMBER 14TH, 2019  
Special Bred Female/Pair Auction**

Sale starts at 10:00 - Feeders, Breds, Pairs 12:30

Complete Dispersal of Marvin Howard - Fancy set of home raised  
cows, AI, young to running age. Cows mated to Willow bulls,  
start calving April 20th.

42 Blk/BWF Strs/Hfrs - 450-650 ..... M Howard

15 Blk 2nd calf cows mated to Charlois bulls,  
start calving Feb 15 ..... B Brester

839 S Colfax • West Point, Ne 69788  
[www.westpointlivestock.com](http://www.westpointlivestock.com)—Office: 402-372-2493  
Brian Brester: 402-750-5821 • Martey Stewart: 402-375-8913  
Matt Brester: 402-380-8266 • Jim Schaben: 712-263-9449  
Jon Schaben: 712-263-0755

**Come and see what we have to offer!**

**SALE BARN**

**SALE BARN**

**BURWELL LIVESTOCK MARKET  
BURWELL, NE**

**FRIDAY, NOVEMBER 15, 2019**

**SPECIAL SPRING CALF & FEEDER AUCTION  
9:00 WEIGH UPS - 11:30 REGULAR AUCTION**

**SPRING CALVES:**

150 B/BK BALDY S/H, 475-600#, PREC.....TOM & MICHAEL HOFF  
125 RED ANG X S/H, 500-600#, PREC .....BILL & BRAD DOWNING  
75 B/RED S/H, 500-650#, PREC..... DOYLE DOWSE  
75 B/BWF S/H, 500#, PREC..... DIANE SONNENFELD  
60 BK STRS/RQ HFRS, 450-525#..... LENTFER RANCH  
60 RED S/H, 500-550#, AGE & SOURCE VER., PREC..... TRAVIS REICH  
40 BK S/H, 450-500#, PREC..... RANDY & MARY CHERRY  
20 B/FEW BWF S/H, 450-550#, PREC .....MIKE & SHERRY WELLS  
20 BK S/H, 350-550#, PREC ..... JULIE ZIMMERMAN  
17 BK S/H,450-650#, PREC ..... KEITH ZIMMERMAN

**UPCOMING AUCTIONS:**

NOVEMBER 22-SPECIAL CATTLE AUCTION  
NOVEMBER 29-SPECIAL DAY AFTER  
THANKSGIVING CALF & FEEDER AUCTION

AUCTION MARKET 308-346-4257 • TODD EBERLE 308-870-1783  
[burwelllivestock.com](http://burwelllivestock.com) or [krvn.com](http://krvn.com) • View, Pre-Register & Bid on our  
auctions live online at: [dvauction.com](http://dvauction.com) & [CattleUSA.com](http://CattleUSA.com)

**SALE BARN**

**SALE BARN**

**CREIGHTON LIVESTOCK MARKET**

402-358-3449 • Toll Free 1-877-SALEBARN

**\*\*11:30 AM TUESDAY, NOVEMBER 12nd, 2019 11:30 AM\*\***

**FEEDER CALVES**

**L. JENSEN:** 146 (83) Black Heifers 900-1000#  
(63) Black & Red Steers 850-900#  
**WAREMBOURG RANCH:** 145 Mostly Black & Red Calves 550-650# PC  
**D. MLADY & SONS:** 140 Black Angus Calves 500-600# PC  
**M & L KUMM:** 110 Black & a few Baldy Calves 525-600# PC  
**R. MEYER:** 108 Black & BWF Heifers 825-850#  
**D. GREGER:** 100 Black Angus Calves 500-600# PC  
**B & R RICHARDS:** 100 Black & a few Crossbred Calves  
475-575# PC  
**S & N ROBBINS:** 90 Black & a few Red Heifers 750#  
**SANDS BROTHERS:** 80 Black Angus Calves 525-625# W & PC  
**SPRINGLAKE ANGUS:** 75 Black Angus Steers 300-500# PC  
**B. GALVIN:** 70 Black Angus Calves 500-600# W & PC  
**J. BEHNK:** 60 Black & a few Char Mostly Heifers 700-725#  
PC, No Implants  
**R. RASMUSSEN:** 52 Black & a few Char X Calves 500-600#  
**R & K ANDERSON:** 50 Black & a few Red Calves 500-600# PC  
**B & C BROCKMAN:** 50 Black & BWF Heifers 900-1000#  
**P. THRAMER:** 50 Black & Char Steers & Heifers 825-850#  
**J. HOWARD FAMILY:** 40 Black Angus Calves 400-500# PC  
**L. FORSCH:** 35 Black Angus Calves 400-500# Drug Free  
**C. BABCOCK:** 35 Black & Crossbred Calves 450-600# PC  
**R. RASMUSSEN:** 29 Black & Red Calves 450-600# W & PC  
**M. THORELL:** 29 Black Calves 400-500# PC  
**GOLTER RANCH:** 25 Black Angus Calves 500-600# PC  
**B & D MUNTER:** 20 Black & Baldy Steers 800-850#  
Other Consignments By: D. Jaeger, R. Metzler, C. Armstead

**UPCOMING SALES** November 19-26: Feeder Calf Auctions

**CREIGHTON LIVESTOCK MARKET**

402-358-3449 Toll Free # 1-877-SALEBARN

[www.creightonlivestock.com](http://www.creightonlivestock.com) • [creightonlivestockmarket@hotmail.com](mailto:creightonlivestockmarket@hotmail.com)  
Ryan Creamer 841-5693 • Joel Kumm 992-0678 • Dick Suhr 358-0269  
Keith Saathoff 841-6795 • Jamie Curtis 209-6107  
Harlan King 640-4774 • Mike Kumm 394-1118



**Columbus Sales Pavilion, Inc.**  
**402-564-3231**

**THURSDAY NOVEMBER 14TH 2019**

**FEEDERS 10:00AM**

160 Blk, Bwf S/H 450-550# (fall vac/spring vac)..... PALMER  
FAMILY FARMS  
85 Blk, Bwf S/H 500-600# (fall vac)..... T. COOVER FAMILY  
65 Black S/H 500-600# (fall vac/wnd) ..... S. WELCH  
55 Blk, Red S/H 500-550# (fall vac/wnd) ..... L. SCHMIT  
50 Blk, Red S/H 850-950# (Dbl Fall Vac/wnd/no implants) ..... T. HINTZ  
42 Blk, Bwf S/H 550-650# (spring vac) ..... N. WEMHOFF  
38 Blk, Bwf S/H 650-700# (spring vac) ..... F. VANIS  
30 Hereford, Red Angus S/H 500-725#  
(fall vac/wnd 60 days)..... R. HULA  
25 Black S/H 450-500# (fall vac/wnd)..... T. WENDT  
23 Black S/H 500-600# (fall vac/wnd) ..... HAIER & JANSEN  
22 Blk, Bwf Steers 900# (vac/off grass) ..... R. KOMENDA  
18 Black S/H 600-750# (fall vac/wnd) ..... R. WEIGERT  
17 Blk, Red S/H 500-700# (spring vac/green)..... H. KREISER  
15 X Bred Steers 500-600# (Dbl Fall Vac/wnd) ..... S. GREGG  
10 Blk, Bwf S/H 600-650# (fall vac/wnd) ..... E. FRESE

Travis Bock 402-910-6596 • Gary Hines 402-340-4550  
Todd Laudenklos 402-276-0435 • Curt Wragge 402-841-8668  
Lucas Luckey 402-910-0373 • Randy Fisher 402-276-2775  
Devon Schernikau 402-641-8814 • Sale Barn 402-564-3231  
sales broadcast on live bid format at [www.cattleusa.com](http://www.cattleusa.com)  
**columbussalespavilion.com**





Check Out  
Livestock Roundup Online Edition  
Before the Print Edition is Delivered!  
[www.midwestmessenger.com](http://www.midwestmessenger.com)  
Click on Subscriptions & Livestock Roundup Digital Edition

SALE BARNS

SALE BARNS

## ERICSON-SPALDING

LIVESTOCK MARKET, ERICSON, NEBRASKA

Saturday, November 16, 2019 – Special Cattle Auction

3000-3500 Head Expected

Weigh ups 8:30, Odd Lots 10:30, Calves to Follow

Most calves have been **preconditioned**—Vac. info will be announced as calves enter the ring.

Ericson-Spalding Livestock Market is a SAV, NHTC, VNB Approved Sale Barn with IMI Global.

325 RED ANG & BLK ANG STRS, prec., NI 500-600#.....SCHULTZ RANCH-Ericson

275 ANG CALVES, prec., Select Vac. Program 500-600#.....JERRY & ROB SMITH

195 ANG CALVES, prec. 500-600#.....KEBER BROS.

150 ANG CALVES, prec. 400-500#.....COLE STEVENS

140 ANG & ANG HERF X CALVES, prec. 500-600#.....JOHN, JOE, THOMAS JERABEK

140 ANG CALVES, prec. 500-600#.....LES & CINDY GREEN

120 ANG CALVES, prec. 400-500#.....4 W RANCH, TONYA WILSON

110 ANG CALVES, prec. 500-600#.....MARK & KERI CARRAHER

100 ANG & ANG X CALVES, prec. 500-600#.....KEVIN CURLO & STEVE GLINSMANN

100 ANG & ANG HERF X CALVES, prec. 475-600#.....TODD HOFFMAN

50 ANG STR CALVES, prec. 550-600#.....RON & KENSIE DEXTER

30 ANG CALVES, prec. 450-550#.....DEE & JOI THORTON

26 ANG CALVES, prec. 500-600#.....DEB O'NEAL

Tuesday, November 19, Special Bred Cow & Heifer Auction

Saturdays, November 23 & 30, Special Cattle Auctions

[www.ericsonlivestock.com](http://www.ericsonlivestock.com) view & bid: [www.cattleusa.com](http://www.cattleusa.com)

Office: 308-653-3111 • Pat Mahony: 308-750-0486

Mike Mahony: 308-750-3791 • Tom Meyer: 308-750-2125

Curt Weber: 308-750-8592 • Stan Klug: 308-750-2142

Kevin Mahony: 402-340-3829 • Gerald Clinch: 402-841-6320

SALE BARNS

SALE BARNS

## ERICSON-SPALDING

LIVESTOCK MARKET, ERICSON, NEBRASKA

Tuesday, November 19, 2019

Special Bred Cow & Heifer Auction

Weigh Ups 10:00, Bred Cows 11:30

350 YOUNG ANG COWS – to be mouthed

Mated to Char bulls, to calve Mar 1 for 65 days

Complete Dispersion off the Alley Ranch.....WM HOBBS 402-340-2200

125 ANG COWS coming with 2nd & 3rd Calves Mated to Ang bulls, to calve Mar 1 for 55 days.....ZACH SIBBEL 402-340-0831

110 ANG COWS, Running Age, Mostly Solid Mouth Mated to Ang bulls, to calve Mar 10 for 60 days, Complete Dispersion.....GAYLE NOBLE 402-649-2424

95 BLK & BWF COWS, 2<sup>nd</sup> Calvers to Running Age Cows Mated to Ang bulls, to Calve Mar 1 for 75 days.....MARVIN PETER 402-336-2616

10 BLK & BWF 1<sup>st</sup> Calf Hfrs, Mated to Ang to calve Mar 1 for 75 days Complete Vac. Program with Scourguard, Complete Dispersion.....MARVIN PETER 402-336-2616

40 ANG COWS, Solid Mouth With Char calves at side, No Exposed Back.....KENNY NORDHUES 308-390-3300

30 ANG & ANG X COWS, Running Age Mated to Ang bulls, to calve Mar 1 for 75 days.....WADSWORTH & ROTHER 308-379-4978

29 ANG COWS, Running Age—1<sup>st</sup> Calvers to Mature Cows Mated to Ang bulls, to calve Mar 5 for 70 days Complete Dispersion.....DEB O'NEAL 308-214-0386

Saturdays, November 23 & 30 - Special Cattle Auctions

[www.ericsonlivestock.com](http://www.ericsonlivestock.com) view & bid: [www.cattleusa.com](http://www.cattleusa.com)

Office: 308-653-3111 • Pat Mahony: 308-750-0486


Mike Mahony: 308-750-3791 • Tom Meyer: 308-750-2125

Curt Weber: 308-750-8592 • Stan Klug: 308-750-2142

Kevin Mahony: 402-340-3829 • Gerald Clinch: 402-841-6320

SALE BARNS

SALE BARNS



## LIVESTOCK AUCTION MARKET

Ogallala, NE • 308-284-2071

### Special Calf & Yearling Sale

Thursday November 14, 2019

Expecting 3500-4000 hd  
Sale Time – 9:00

**\*\* We are an IMI Global Age & Source Verified, NHTC & Verified Natural Beef Approved Livestock Auction\*\***

**-CALVES-**

RUSHCREEK LAND & LIVESTOCK (1070)	BARNEY STEGER (100)
DOYLE RANCH (300)	DUANE BOLTON (100)
LANCE BIXBY & LINDSEY BIXBY (290)	KUMIVA GROUP (100)
LYNDON & KORY HOOPER (240)	BROCK BEAVERS (90)
BART TERMAN (200)	TIM VANRAAY (75)
FIRGURE 2 RANCH – MARK & VIRGILENE MCCASLAND (170)	DAVID KENNEDY (53)
17 RANCH (160)	DARRIN & DENISE FREY (44)
	PHIL & NANCY COLE (40)
	REX CERNY (35)

Call our office for more info & updated listings or visit our website @ [www.ogallalalive.com](http://www.ogallalalive.com). This sale will be broadcast live via the internet on [cattleusa.com](http://cattleusa.com)  
Pre-registration for online bidding is required BEFORE sale day.

SALE BARNS

SALE BARNS

## BASSETT LIVESTOCK AUCTION

Wednesday, November 13, 2019

### Special Spring Calf & Yearling Auction

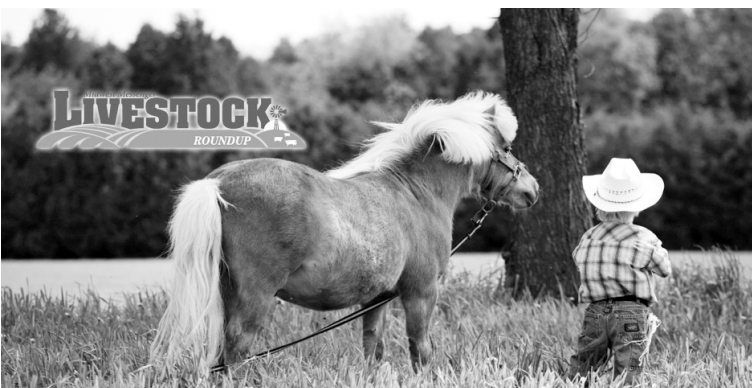
9 am Weigh Ups - Noon Spring Calves & Yearlings  
- Expecting 2,500 Head

Non-Weaned Spring Calves:

230 blk str 475-600.....	Gary & Chad Ludemann
230 blk str & hfrs 450-625.....	Dale Sybrant & Family
205 blk-bwf str 625-725.....	Jim, Barb, Kip, & Shauna Slaymaker
175 blk str 500-625.....	Bob Davis
175 blk str & hfrs 450-575.....	Clay Ranch
130 blk str & hfrs 400-550.....	Sioux Angus
130 blk str 550-700.....	Clint & Cindy Focken
130 blk-red str & hfrs 475-625.....	Loren, Sharon, & Trenton Butterfield
130 blk str 600-725.....	Steve, Ellen, & Phillip Boshart
120 char x-red str (weaned) 425-550.....	David & Susan Roth
120 blk str & hfrs 400-500.....	Steinhauser & Sons
75 blk str 475-625.....	Jim Sybrant
75 blk str & hfrs 450-575.....	Mark & Brian Keck
55 blk str 475-575.....	Dean & Marty Painter
40 blk str 525-625.....	Tom & Joe Schumacher
40 blk str 600-700.....	Jess Reiman
30 red yrlg hfrs (PO) 775-875.....	Druke Ranch LLC

Several pkgs of 5-40 head of spring calves & yearlings with more listings by sale time.

**BASSETT LIVESTOCK AUCTION 888-684-0584 OR 402-684-2361**  
Jake Maurer 402-822-0080 • Shane Kaczor 402-336-7011  
Joe Leonard, Fieldman 402-376-4988 • Payton Shankland, Fieldman 402-822-0226  
Radio Updates: KRNV 10:19 A.M. Tuesday — WNAV 10:38 A.M. Tuesday  
[www.bassettlivestock.com](http://www.bassettlivestock.com)



SALE BARNS

SALE BARNS

## BROKEN BOW LIVESTOCK MARKET

THURSDAY, NOVEMBER 14, 2019  
SPECIAL CALF & FEEDER AUCTION

9:00 WEIGH UPS 11:30 CALVES & FEEDERS

CALVES:

400 BK/BWF STRS & HFRS, 550-650#.....	ROD, TROY, & KYLE SCHWEITZER
80 BK/BWF STRS & HFRS, 525-600#.....	TOM & BONNIE MAYO
79 BK/RED STRS & HFRS, 500-600#.....	MEL MAY
50 RED/RWF/HERF STRS & HFRS, 425-550#.....	GLENDY RANCH
50 BK/BWF STRS, 425-550#.....	BRIAN GLENDY & JACK LINDSTROM
35 BK/BWF STRS & HFRS, 550-600#.....	JAMES L JOHNSON
25 F1 X STRS & HFRS, 450-550#.....	JOHN OLOFSON
25 BK STRS & HFRS, 575-625#.....	KARI CHESLEY
22 HERF & BWF STRS & HERS, 450-550#.....	JEFF WITTHUHN
20 HERF STRS & HFRS, CORRIENTS BULLS & HFRS, 350-500#.....	CINDY VOSSLER
14 BK STRS, 550-600#.....	QUINTON MALCOMB
5 LONGHORN STRS & HFRS, 300-500#.....	TED SOUKUP

WEANED CALVES:

8 RED/BK STRS & HFRS, 575-675#.....LARRY CURTIS

**MORE CONSIGMENTS BY SALE TIME!!**

**UPCOMING AUCTIONS:**

NOVEMBER 21, 2019 - SPECIAL CALF & FEEDER AUCTION  
NOVEMBER 28, 2019 - NO AUCTION HAPPY THANKSGIVING!!


AUCTION MARKET 308-872-3334 • TODD EBERLE 308-870-1783

[BROKENBOWLIVESTOCK.COM](http://BROKENBOWLIVESTOCK.COM)

VIEW, PRE-REGISTER & BID ON OUR AUCTIONS LIVE ONLINE AT: [CATTLEUSA.COM](http://CATTLEUSA.COM)

SALE BARNS

SALE BARNS



## Albion Livestock Market

Albion • 402-395-2188 • [www.albionlivestock.com](http://www.albionlivestock.com)

### WED., NOVEMBER 13, 2019, @ 12:00 NOON

120 Blk/Bwf s&h, dbl v, 450-650#.....	Sharon Baker Family
70 Blk/Bwf s&h, dbl v, 500-600#.....	Conner Rankin/Brian Struve
60 Bwf/Blk str & RQ hfrs, dbl v, 475-650#.....	Rod/Janelle McIntyre
60 Rd/Rwf s&h, w & dbl v, 450-600#.....	Pending
55 Blk/Bwf s&h, dbl v, 475-650#.....	Mike Schrad
52 Blk/Bwf s&h, w & dbl v, 475-650#.....	Jeff Beckwith
45 Blk str, w & dbl v, 700-850#.....	Scott Angus Cattle
45 Mstly Blk s&h, dbl v, 400-600#.....	Duane Lee
35 Blk s&h, dbl v, 500-600#.....	Pat Sullivan
27 Blk s&h, dbl v, 550-700#.....	John/Sherril Iburg
21 Mstly Blk s&h, dbl v, 500-600#.....	Steve Lund
16 Blk/Bwf s&h, dbl v, 500-625#.....	Brett Schaecher
12 Holstein str, w & dbl v, 450-650#.....	Dave Fisher
10 Blk/Bwf s&h, w & dbl v, 500-700#.....	Dennis/Zack Nelson

**PAIRS**

32 Blk (few Rd), (2nd & 3rd calf), w/ 150-400#, exposed back.....	Eric Stone/Cody Gulbrandson
5 Blk (RA), w/ 200-300# calves.....	Greg Anderson
3 Blk (young) w/ 175-275# calves.....	Rankin/Struve
3 Blk (2nd & 3rd calf), w/ 175-275# calves.....	Randy Melcher

**NEXT SALE: WEDNESDAY, NOVEMBER 20, 2019**

WES STOKES, Owner: 402-608-0013 • TY AUSTIN, field rep: 402-841-1057  
JENE KASPERBAUER, field rep: 308-750-8279 • RYAN HANSEN, field rep: 402-750-1576

Find his next  
best friend in  
our classified  
listings!

In print and online  
[www.livestockroundup.com](http://www.livestockroundup.com)

[www.livestockroundup.com](http://www.livestockroundup.com)  
Available Online 24/7

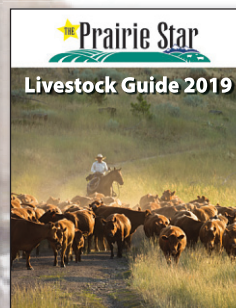
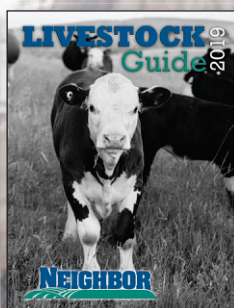
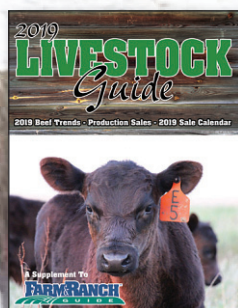
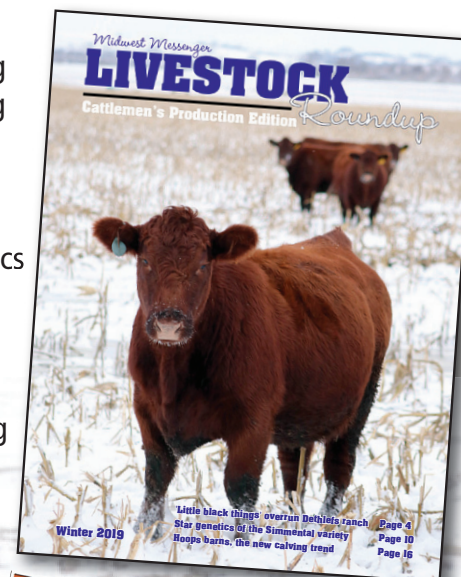
# RESERVE YOUR SPACE NOW FOR OUR ANNUAL LIVESTOCK GUIDE!

Midwest Messenger's Livestock Guide 2020 will give you the impact you need, kicking off the 2020 marketing season by arriving in producers' hands at the beginning of livestock season publishing December 20, 2019. This all gloss publication will give your ad the quality it deserves!

As in the past, Livestock Guide 2020 will include timely, informative articles from around our livestock region, covering topics related to cattle management, marketing and production.

## Make a higher impact!

Advertise in all 4 of Lee Agri-Media's Livestock Guides! Inserting in The Prairie Star, Midwest Messenger, Farm & Ranch Guide and Tri-State Neighbor, you will reach over 45,000 commercial and purebred livestock producers in Nebraska, North Dakota, South Dakota, Montana and Minnesota.



Contact Me To Advertise In These High Impact Publications!



**CHRIS BEUTLER**  
Agri-Media Livestock  
Representative  
402-380-8244  
beutlerworkplace@hotmail.com

