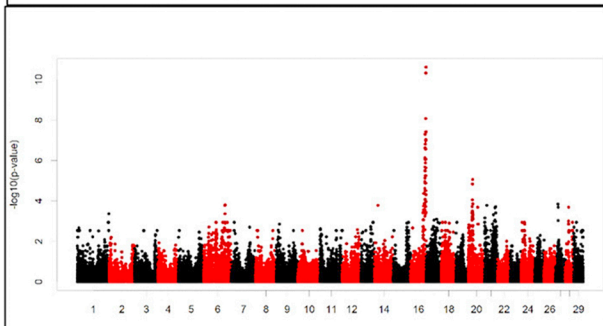


Identification of an incompletely penetrant haplotype on chromosome 16 that is associated with Holstein calf recumbency

Calves on multiple farms were unable to stand without assistance



The calf recumbency phenotype was associated with a haplotype on chromosome 16



Association of the recumbent (RH) and normal haplotypes with the inability to stand

Genotype	Unable to stand	Normal family members
RH/RH	18	1
RH/-	0	16
-/-	0	9