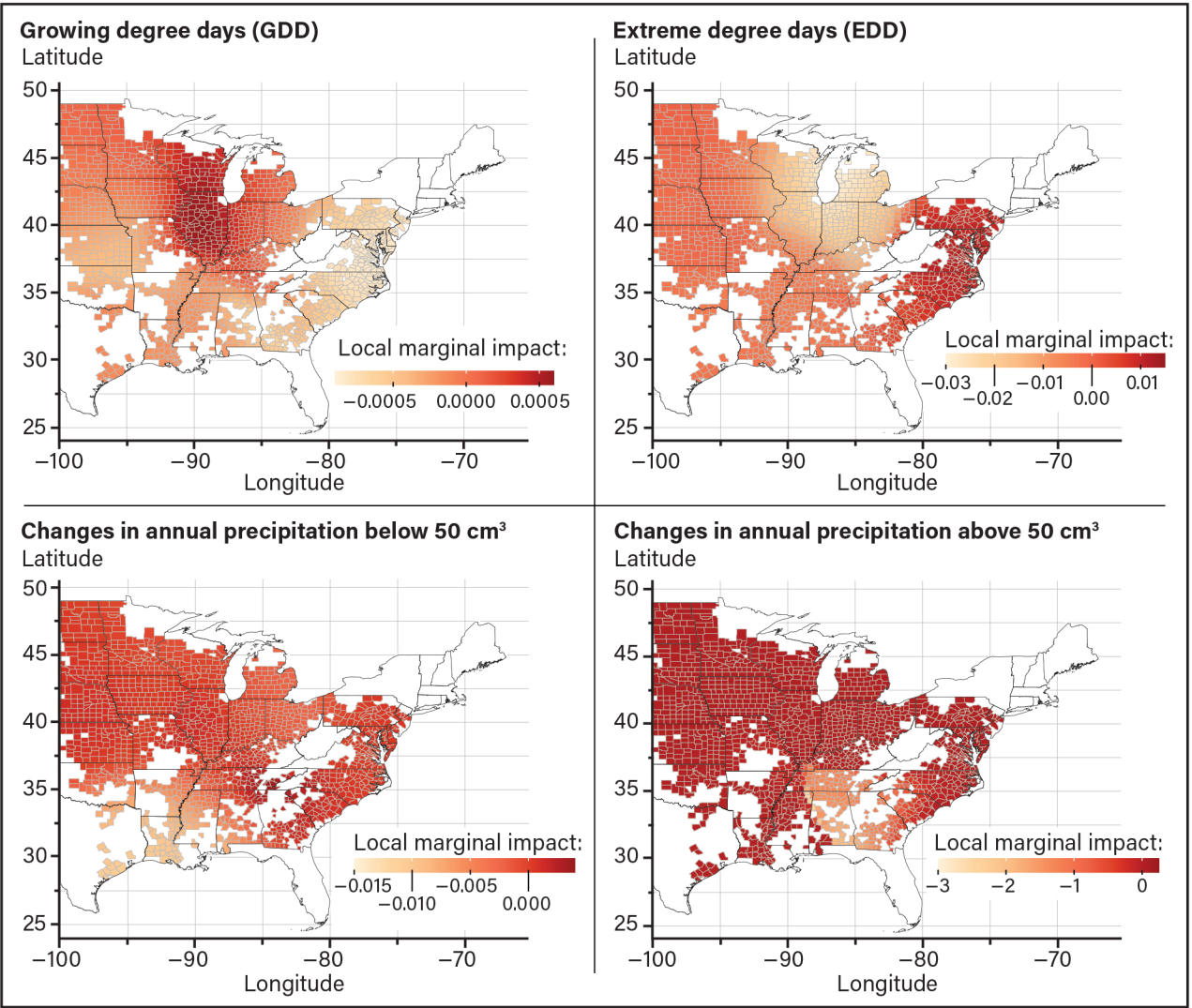


Figure 7
Spatial distribution of the marginal effects of heat and precipitation on soybean yields for U.S. counties east of the 100th meridian, 2016–36



cm³ = cubic centimeters.

Note: Figure maps the spatial distribution of the marginal effect of growing degree days (top-left), extreme degree days (top-right), annual precipitation below 50 cm³ (bottom left), and annual precipitation above 50 cm³ (bottom right) on corn yields for U.S. counties east of the 100th meridian.

Source: USDA, Economic Research Service calculations.