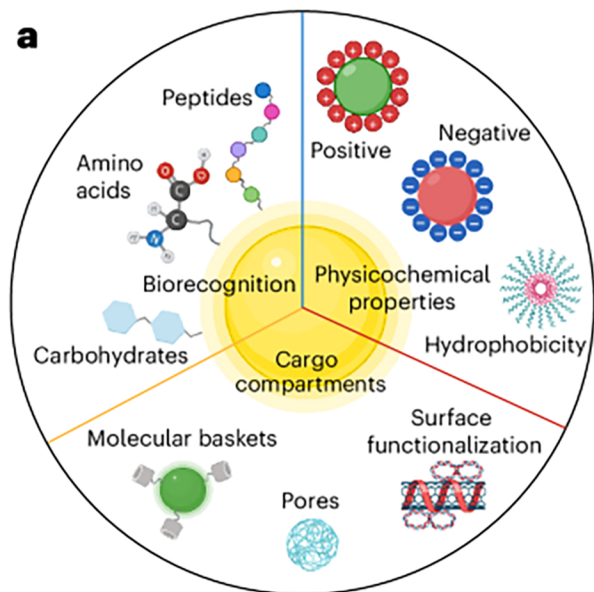


Targeted nanocarriers



Biorecognition

- Peptides
- Amino acids
- Carbohydrates (for example, sugars)

Physicochemical properties

- Charge (positive, negative, neutral)
- Size
- Hydrophobicity

Cargo compartments

- Molecular baskets (for example, cyclodextrins)
- Pores
- Surface functionalization

Precise delivery mediated by biorecognition

