

VIRTUAL ONLINE

CLARK COUNTY, MISSOURI LAND AUCTION

THURSDAY, DECEMBER 1, 2022 AT 11:00 AM



125.7 SURVEYED ACRES • 2 TRACTS

The farm is located approximately 3 miles southwest of Kahoka, MO or approximately 24 miles east of Memphis, MO in Section 35, T65N•8W, Lincoln Township, Clark County, MO.

Farm represents productive tillable cropland, prime Northern Missouri Whitetail Deer & Wild Turkey Hunting acreage, as well as ideal rural building sites!

- ✓ **PRODUCTIVE TILLABLE CROPLAND!**
- ✓ **PRIME RURAL BUILDING SITES!**
- ✓ **EXCELLENT HUNTING/RECREATIONAL ACREAGE!**

THE ESTATE OF DENNIS W. MOLDENHAUER

Representing Attorney: David Rouner | Rouner Law Office LLC
400 N. Franklin Street | Kirksville, MO 63501 | (660) 665-8324

Closing & Title Work: Oak Hills Title Co.
307 Lewis Street | Canton, MO 63435 | (573) 288-4461

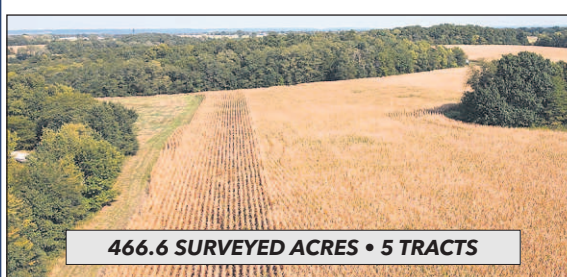
Auction Managers:
Bill Fretwell (660) 341-7735 & Jennifer Wood (217) 257-8812

VISIT OUR WEBSITE FOR ADDITIONAL DETAILS,
PHOTOS & ONLINE BIDDING CATALOGS!

VIRTUAL ONLINE

RALLS COUNTY, MISSOURI LAND AUCTION

FRIDAY, DECEMBER 2, 2022 AT 11:00 AM



466.6 SURVEYED ACRES • 5 TRACTS

Land is located in Sections 1 & 2, T55N•R5W, Spencer Township, Ralls County, MO.

Farm represents productive tillable cropland, improved pastureland & hay production, prime Northern Missouri Whitetail Deer & Wild Turkey Hunting acreage, as well as ideal rural building sites!

This historic farm is located approximately 1.5 miles west of New London, MO, 9 miles southwest of Hannibal, MO, 85 miles north of Columbia, MO or 95 miles north of St. Louis, MO.

- ✓ **PRODUCTIVE TILLABLE CROPLAND!**
- ✓ **IMPROVED PASTURELAND & HAY PRODUCTION!**
- ✓ **PRIME RURAL BUILDING SITES!**
- ✓ **EXCELLENT HUNTING/RECREATIONAL ACREAGE!**

GEORGE C. WATSON REVOCABLE LIVING TRUST

Representing Attorney: Briscoe & Brannon | John W. Briscoe
423 Main Street | New London, MO 63459 | (573) 985-3411

Title Work: Accurate Land Title Co.
218 Broadway | Hannibal, MO 63401 | (573) 221-1002

Auction Managers:
Bill Fretwell (660) 341-7735 & Jennifer Wood (217) 257-8812

TIMED ONLINE | NO-RESERVE

FARM RETIREMENT AUCTION

BIDDING CLOSSES: TUESDAY, DECEMBER 6, 2022
STARTING AT 10:00 AM^{CT}

ADDRESS: 1364 E 800N, GOODLAND, IN 47948-8503



INSPECTION DATE: MON., DEC. 5 • 10:00 AM - 4:00 PM

HIGHLIGHTS: '14 JD 8370R MFWD tractor, 1,655 hrs.; '13 JD 8360R MFWD tractor, 1,750 hrs.; '10 JD 6430 Premium MFWD tractor, 2,053 hrs.; '17 JD S670 2wd combine, 1,395 eng./992 sep. hrs.; '18 JD 708C 8 row 30" corn head; '18 JD 635FD HydraFlex 35" flex draper head; Unverferth 8250 grain cart; '16 JD 1795 16/32 CCS planter, 9,686 acres; Unverferth 410XL 4-box seed tender; JD 7000 4 row 30" 3-pt. planter; '08 JD 6700 self-propelled sprayer, 998 hrs.; '13 JD 2720 7-shank disc ripper, one owner; '14 JD 2310 33"9" soil finisher, one owner; Landoll 7431-29VT 29" vertical tillage tool; Case-IH 5300 15-knife NH3 applicator; JD 856 16 row 30" 3-pt. cultivator; JD 400 30" 3-pt. rotary hoe; International 531 3-bottom 3-pt. plow; International 710 4-bottom plow; '00 GMC 8500 grain truck, 106,271 mi.; '95 GMC Topkick grain truck, 87,719 mi.; '95 GMC Topkick grain truck, 97,962 mi.; (2) '18 JD StarFire 6000 receivers; '12 JD StarFire 3000 receiver; '11 JD GS3 2630 display; '12 JD GS3 2630 display; '13 JD 825i Gator 4wd UTV, 323 hrs.; Frontier pallet forks; JD 709 7' 3-pt. rotary mower; JD 155 10' 3-pt. blade; Ber-Vac 876 8' 3-pt. snowblower; Kelderman 8 row down corn reel; Oliver barge wagon; 2,000 gal. fuel tank; Additional Farm Support Items!

DOUGLAS MORGAN

EQUIPMENT QUESTIONS: DOUG (219) 863-1592

Auction Manager: Zach Hiner (260) 437-2771

CONSIDERING AN AUCTION?
Call or Email Today!

If you are considering selling farm machinery, real estate or collector cars, our team of professionals is ready to help. Feel free to contact us anytime to learn more about the services we offer. It's never too early to start planning an auction.

CONTACT US TODAY

(844) 847-2161 • WWW.SULLIVANAUCTIONEERS.COM

License #44400107

 **SULLIVAN**
AUCTIONEERS, LLC