

VIRTUAL ONLINE

Davis County, Iowa LAND AUCTION

Friday, June 17, 2022 at 10:00 AM



80 ACRES± (SUBJECT TO SURVEY) • 1 TRACT

The Humphrey land is located in Section 26, Union Township, Davis County, Iowa. (3 1/2 miles north of Milton, Iowa or 12 miles east of Bloomfield, Iowa.)

Mark your calendars now to participate in this upcoming Davis County, Iowa land auction. This diverse farm offers productive tillable farmland that includes Olmitz-Vesser-Zook and Humeston soils. The balance of the tract offers improved pastureland and a very nice pond. This farm sells with a tenant in place for the upcoming 2022 crop year and the buyer will receive 100% of the cash rent! This is an auction you will not want to miss!

EVELYN L. HUMPHREY

Representing Attorney: Rick Lynch | Lynch Law Office
207 S Washington St, Bloomfield, IA 52537 | (641) 664-3188
Auction Manager: John Probasco (641) 856-7355



(844) 847-2161

Sold@SullivanAuctioneers.com

License #444000107

VIRTUAL ONLINE

Jefferson County, Iowa LAND AUCTION

Mon., June 27, 2022 at 10:00 AM



OPEN HOUSE: MON., JUNE 13TH • 4:00 - 5:30 PM

The Davidson Farm is located in Section 7, Locust Grove Township, Jefferson County, IA (4 miles north of Batavia, IA or 15 miles west of Fairfield, IA)

Make plans now for this fast approaching Jefferson County, IA land auction. Tract 1 offers productive Mahaska, Ottley and Clarinda soils and has a CSR2 of 71.9 on the entire tract. Tract 2 is improved with a 1 1/2 story 3 bedroom country home, a 3 year old 24' x 24' garage, a nice 54' x 90' storage building and other usable structures. This is an auction that you will not want to miss!

VIRGINIA M. DAVIDSON ESTATE

JEANETTA & MARC MAYNARD - CO-EXECUTORS

Representing Attorney:

Vanessa M.Y. Willman | Foss, Kuiken, Cochran, Helling & Willman, P.C.
100 E Burlington Ave., First National Bank Bldg., Fairfield, Iowa 52556

Auction Managers:

Jim Huff (319) 931-9292 & Jeff Hoyer (319) 759-4320



(844) 847-2161

Sold@SullivanAuctioneers.com

License #444000107

VIRTUAL ONLINE

Linn County, Missouri LAND AUCTION

Mon., June 27, 2022 at 10:00 AM

396 ACRES± (SUBJECT TO SURVEY) • 5 TRACTS



Real Estate & Equipment Open House/Viewing

Sat., June 11 • 10 AM - 3 PM
12309 State Hwy HH | New Boston, MO

Property is located approximately 6 miles northwest of New Boston, MO or approximately 3 miles south of Winigan, MO in Sections 21 & 22, T60N•R18W, North Salem Township, Linn County, MO.

FARM REPRESENTS WELL-MAINTAINED FARMLAND CURRENTLY IN IMPROVED PASTURELAND/HAY PRODUCTION WITH SEVERAL OUTBUILDINGS, NICE LAKES, QUALITY FENCING & CROSS FENCING, CATTLE FACILITIES AND A VERY NICE COUNTRY HOME.

Equipment will sell timed online @ 12:00 Noon



- TO SELL TIMED ONLINE @ 12:00 NOON -
TRACTOR | VEHICLES | UTV | ATV'S | LAWN
MOWER | FARM EQUIPMENT
TOOLS AS WELL AS FURNITURE AND OTHER
PERSONAL PROPERTY - CHECK OUR WEBSITE
OFTEN FOR A MORE DETAILED LIST!

ELWYN & IOLA NEWENDYKE ESTATES

Representing Attorney: Robert Cowherd | Chapman and Cowherd, P.C.
903 Jackson Street | P.O. Box 228 | Chillicothe, MO 64601 | (660) 646-0627

Closing & Title Work: Professional Land Title Company
113 East Brooks Street | Brookfield, MO 64628 | (660) 258-3125

Land Auction Managers:

Bill Fretwell (660) 341-7735 & Jennifer Wood (217) 257-8812

Personal Property Auction Manager: Dale Jones (309) 299-6400



(844) 847-2161

Sold@SullivanAuctioneers.com

License #444000107

TIMED ONLINE | NO-RESERVE

DEALER & FARMER AUCTION

Bidding Closes:
Monday & Tuesday, June 20 & 21, 2022
Starting at 8:30 A.M. CT Both Days

ITEMS WILL BE LOCATED AT SULLIVAN AUCTIONEERS' FACILITIES IN INDIANA, ILLINOIS, MINNESOTA AND OTHER OFFSITE LOCATIONS.



To consign, call (844) 847-2161 or email

Sold@SullivanAuctioneers.com.

Delivery of consignments accepted beginning: Mon., May 16

Early advertising deadline: Wed., June 1

Last day to consign: Sat., June 11

TIMED ONLINE | NO-RESERVE

FARM RETIREMENT AUCTION

Bidding Closes: Wed., June 29, 2022
Starting at 10:00 AM



PHYSICAL ADDRESS: 291 2200TH AVE., LATHAM, IL 62534

HIGHLIGHTS: '11 JD 7280R MFWD tractor, 709 hrs. - one owner; '01 JD 8110 2wd tractor, 3,653 hrs.; '69 JD 4520 2wd tractor, 6,149 hrs.; '09 JD 2520 MFWD tractor, 121 hrs.; '75 Ford 8600 2wd tractor, 4,686 hrs.; '90 Ford 1920 MFWD tractor, 75 hrs.; Ford 8N 2wd tractor, Restored; International Cub 2wd tractor; Economy Tractor 2wd tractor; Farmall M 2wd tractor; '13 JD S550 2wd combine, 911 eng./604 sep. hrs.; '11 JD 606C 6 row 30" corn head; '11 JD 625F 25' HydraFlex platform; '97 JD 1700 8 row 30" 3-pt. planter; JWS 3 row 30" 3-pt. planter; Allis Chalmers 1 row 3-pt. planter; Patriot 100 2-box seed tender; Sunflower 4211 9-shank disk chisel; Case-IH 496 21' disk; Case-IH 4200 20' soil finisher; Case-IH 4800 28' field cultivator; Kewanee 101 18' disk; JD 1610 14-shank 3-pt. chisel; Case 3-bottom pull-type plow; 8 row 30" 3-pt. cultivator; JD 400 20' rotary hoe; 7-knife 3-pt. NH3 applicator; Unverferth 5000 grain cart; Killbros 400 gravity wagon; (2) DMI 280 bu. gravity wagons; Brent 450 Grain Train; Bush Hog 12512 12' 3-pt. rotary cutter; Woods Cadet 84 7' 3-pt. rotary cutter; Woods PRD6000 5' 3-pt. grooming mower; JD 28' implement trailer; Shop Built 300 gal. 3-pt. sprayer; Rink 9' 3-pt. blade; Shop Built 55" 3-pt. blade; York 4' pull-type rake; 5' snow blower; '03 GMC C7500 grain truck, 371,506 mi.; Shop Built 12'x6' flatbed trailer; '08 JD 620i 4wd Gator UTV, 129 hrs.; Roteka RTX-260 dune buggy; '86 Honda 250 3-wheeler; Large selection of Farm Support Items & much more!

LYNCH FARMS

EQUIPMENT QUESTIONS:

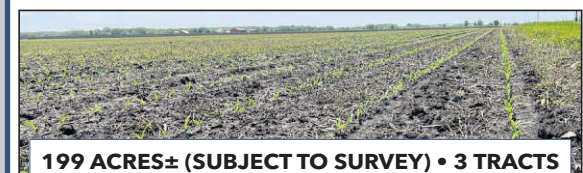
GERALD (217) 521-7040 & CHERYL (217) 521-3533

Auction Manager: Matt Sullivan (309) 221-7001

VIRTUAL ONLINE

Fulton County, Illinois LAND AUCTION

Thurs., June 30, 2022 at 2:00 PM



199 ACRES± (SUBJECT TO SURVEY) • 3 TRACTS

The Walters farm is located approx. 4 miles north of Table Grove, IL along Hwy 34 and is further described as being located in Sections 5 & 6, T5N - R1E, Farmers Township, Fulton County, IL. Tracts 1 & 2 represent productive, tillable farmland. Tract 3 represents tillable farmland, a pond & a cabin

OSCAR WALTERS ESTATE

ELIZABETH MCELFFRESH | ADAM DANNER | THOMAS GRAFF

Representing Attorney: John McMillan

McMillan, Hennenfent, DeJode & Humbert PC

402 East Jackson, Macomb, 61455 | (309) 837-290

Auction Manager: Michael Sullivan (309) 333-0916