

Community

Events, Activities & Meetings
April 19-April 27

SATURDAY, APRIL 19

Landowners meeting - "Fair deal" gas leasing prospects at Mosherville Church at 2 p.m. FMI: 315-559-1326.

Easter egg hunt - at 11 a.m. at the Don Gill Elementary School in Wellsboro. For toddlers through 6th graders. Free.

Lambs Creek Easter Egg Hunt - at 1 p.m. at Lambs Creek recreation area. Hunt is for ages 1 to 12. Free.

SUNDAY, APRIL 20

EASTER SUNDAY

TCARC testing session - registration at 8:30 a.m., testing at 9 at the Community Center in Wellsboro. Bring a valid photo ID and license.

Over Eaters Anonymous - Every Sunday at 7 p.m. at St. James' Episcopal Church Parish Hall in Mansfield. FMI: 570-404-7570.

TOPS #608 Westfield - 4:30 p.m. weigh-in, 5 p.m. meeting, St. Catherine Center, Lincoln St., Westfield. FMI: 814-367-5124.

TOPS #768, Mansfield - 5:15 p.m. weigh-in, 5:45 p.m. meeting, First Citizens Operations Center next to Walmart, Mansfield. FMI: 570-549-2331 or 570-662-3265.

TOPS #929 - 4:30 p.m., Elkland United Methodist Church, 120 North Buffalo Street in Elkland. FMI: 814-326-4237 or 814-258-7569.

TOPS #1205, Stony Fork - 8 a.m. weigh-in, meeting follows, Stony Fork Baptist Church. FMI: 570-724-2719 or 570-724-1647.

TOPS #919, Covington - 8:45-9:15 a.m. weigh-in, meeting follows, Covington Baptist Church. FMI: 570-662-1311 or 570-723-1363.

WEDNESDAY, APRIL 23

Art class - at Mansfield Methodist Church from 10 a.m. to 4 p.m. with Bonnie Ball. FMI: 570-297-4752 to register.

World Book Night - at From My Shelf Bookstore in Wellsboro FMI: 570-724-5793.

Free Prostate and Colorectal Cancer screenings - from 3 to 5 p.m. at the Cole Memorial Hospital's Patterson Cancer Care Center. Register: 814-274-8200.

Trivia Night - at 7 p.m. at the Benjamin Patterson Inn in Corning. Up to 12 teams of four people can compete for \$20 per team. FMI: 607-937-5281.

Microsoft Excel Level 2 class - from 9 a.m. to 4 p.m. hosted by Penn College at the Wellsboro Area School District Administration Building.

Weight Watchers - 5 p.m. weigh-in, 5:30 p.m. meeting, Galeton First Presbyterian Church. FMI: 570-724-7572 or drubin@ptd.net.

THURSDAY, APRIL 24

Stroke, osteoporosis screenings - at the Masonic Lodge 315 in Wellsboro. Packages start at \$149. FMI: 1-877-237-1287.

New Politics - at Mansfield University at 8 p.m. Tickets are \$5 for MU students, \$10 employees, \$15 public.

Weight Watchers - 5:30 p.m. weigh-in, 6 p.m. meeting, Lawrenceville Calvary United Methodist Church. FMI: 570-724-7572 or drubin@ptd.net.

FRIDAY, APRIL 25

Goodies for our Troops - from 1 to 6 p.m. at 87 Main Street in Wellsboro FMI: 570-662-5601.

Learning Early Conference - at 8:30 a.m. at the Sayre Theatre and Guthrie Campus in Sayre until 4 p.m. FMI: 570-268-2787.

Wellsboro yard sales - from 9 a.m. to 5 p.m. each day all throughout Wellsboro. Map: 570-724-2287. Spring clean up week is Monday April 28 to Friday May 2.

SATURDAY, APRIL 26

Steam Valley farm tour - from 10 a.m. to 3 p.m. Farm is located on Steam Valley Road (off of Route 15 near the Turkey Ranch). Free. FMI: 570-998-2221 or steamvalleyfiber@gmail.com

Goodies for our Troops - see April 25 listing.

Doc's Well of Hope/5K Race - benefits children of Ethiopia. Begins at 8:30 a.m. at the Mansfield Boat Launch. FMI: 607-426-5898.

Earth Day at Mill Cove - from 10 a.m. to 3 p.m. at the Mill Cove Environmental Area near Mansfield. Free. FMI: millcovearea.org or 570-549-8028.

Community Day/Car wash - at Animal Care Sanctuary in Wellsboro from 10 a.m. to 2 p.m. Suggested donation is \$10 per car or truck. Proceeds benefit the shelter animals. FMI: 570-724-3687.

Wellsboro yard sales - see April 25 listing.

Autism Walk and 5K Color Run - at Smythe Park in Mansfield at 10 a.m. and 1 p.m. Pay \$10 to donate and register at 9:30 a.m. Registration includes a T-shirt. FMI: 570-404-0906.

Festival Chorus - April 26 at 7:30 p.m. on the Mansfield University Campus. FMI: 570-662-4710.

Healthy Kids Day - at the Tioga County Branch YMCA from 10 a.m. to 1 p.m. Free. FMI: 570-662-2999.

Blossburg Community yard sales - all throughout Blossburg from 8 a.m. to 2 p.m. Free coffee and maps at the Brick Tavern. Spring clean up is April 28 to May 2. FMI: 570-638-2005.

Annual Chili Cook Off - hosted by Second Chance Animal Sanctuaries on April 26 from 10 a.m. to 1 p.m. at Rockwell's Farm and Pet Supply in Wellsboro. Booth set up is \$10. To enter as a chef, \$15 fee at 1-888-724-6188.

SUNDAY, APRIL 27

"Issues and end of life care" - workshop at 3 p.m. at St. Peter's Church in Wellsboro. Free. Refreshments provided. FMI: 570-724-3030.

Goodies for our Troops - see April 25 listing.

"Sweep the Streets" - Mansfield community project by MU athletes. Event going on all day.

Aziz Ansari's Modern Romance comedy tour - Tickets on sale now for performance at 8 p.m. at Decker Gymnasium, Mansfield University. Tickets: \$5/MU students, \$15/MU employees and alumni, \$25/general public. On sale at the campus bookstore or at tix.com

COMING SOON

"Up, Up and Away!" - dinner dance hosted by the Soldiers and Sailors Memorial Hospital's Auxiliary. Event is May 10 at the Tyoga Country Club at 6 p.m. Cost is \$60 and tickets are on sale now. FMI: 570-723-0191.

Booster Banquet tickets - now on sale for April 30 banquet at 7:30 p.m. at the Penn Wells in Wellsboro. Tickets are \$37.50 per person and available from any Wellsboro Rotary Club member. Proceeds go to PA Sate Laurel Festival.

EXHIBITS

"Paul Revere's Boston" - Visit Boston and Paul Revere through an exhibit using antiques, paintings, reproductions, realia and photographs on display at the Mansfield High School Library throughout April from 9 a.m. to 3 p.m. during school days. FMI: 570-662-7534.

DAILY/WEEKLY

Autism Week - Autism Week starts April 21 with events and speakers going on throughout the week at Mansfield University and Smythe Park. For more information, call 570-404-0906 and check out the Living section.

Beginners Core Strength Class - at the Gmeiner Arts Center in Wellsboro from 9:30 to 10:30 a.m. every Tuesday and Thursday until May 8. 8 classes are \$70 or \$10 drop in rate. FMI: 215-237-8473.

Birding Walks - every Saturday at 8 a.m. at Hills Creek State Park from now until the end of May. FMI: 570-724-4246.

Blacksmith lessons - at the Benjamin Patterson Inn Museum in Corning from 9 a.m. to 4 p.m. Monthly April through November. FMI: 607-937-5281.

Calendar

Events, Activities & Meetings
April 19-April 27

Hip Hop Dance! - held at the Tioga County Branch YMCA Mondays, until May 19, from 5:30 to 6:15 p.m.; for boys and girls ages 6-10 years; \$30 for members, \$40 for non-members. FMI: 570-662-2999.

Sportsaganza - held at the Tioga County Branch YMCA Mondays, until May 12 from 5 to 5:45 p.m.; For boys and girls ages 6-10; \$25 for members, \$35 for non-members. FMI: 570-662-2999.

Mary Lou Putman Fitness Center - Open daily, \$5 drop in fee, Wellsboro High School. FMI or hours: 570-724-0300.

Christ Pioneer Club - at the First Baptist Church in Wellsboro every Tuesday from 3:15 to 5:15 p.m. Doors open at 3 p.m. Snack will be provided. For ages 4 though 7th grade. FMI: 570-724-4681.

Bitty Soccer - at the Tioga County Branch YMCA in Mansfield every Saturday from March 15 to April 12 from 5:30 to 6:30 p.m. For ages 6 to 8. FMI: 570-662-2999.

Snag Golf - at Tioga County Branch YMCA from noon to 1 p.m. for grades K-7 held every Saturday until April 5. FMI: 570-662-2999.

Yu-Gi-Oh - Play is 3:30 p.m. every Wednesday at Pop's Culture Shoppe, Wellsboro. Free

Swing Dance Classes - held at the Mansfield Y for any adult couples, \$45 per couple. Pre-registration required. Fridays, March 7 through April 11, from 7 to 8 p.m. FMI: 570-662-2999.

Coffee and Cards - 10 a.m.-noon every Wednesday at Pop's Culture Shoppe, Wellsboro. Free

YMCA Light Aerobics - Tuesday and Thursday, 9:30-10:15 a.m. at the Tioga County Branch YMCA, Mansfield. FMI: 570-662-2999.

Bokwa - Now offered at the Tioga County YMCA as part of a membership! FMI: 570-662-2999.

Tioga Country Branch YMCA's SilverSneakers - Program to get seniors active both mentally and physically runs Monday and Wednesday, 9:30 to 10:15 a.m. at the YMCA in Mansfield. FMI: 570-662-2999.

MONTHLY MEETINGS

Tioga County Addiction/Drug Education support group - free at 7 p.m. 2nd Wednesday (speaker) and 4th Tuesday (open forum) of every month at Richmond Township Building in Mansfield. FMI: Facebook under name.

H-G's Acting Up! - meets at 2 p.m. on the second and fourth Tuesdays of each month from now until May. Reading theatre program for ages 55 and older. Meet at the H-G house on 29 Water St. in Wellsboro. FMI: 570-724-4586

Adult Book Club - at From My Shelf bookstore in Wellsboro every fourth Tuesday of the month from 7 to 8:30 p.m. Free. FMI: 570-724-5793.

Teen Book Club - at From My Shelf Bookstore in Wellsboro from 4 to 5:30 p.m. every fourth Thursday. Pizza and soda provided. \$3 to keep the book. FMI: 570-724-7572.

Bereavement Support Group - for people who have experienced the loss of a husband, child, parent or friend meetings will be held every fourth Wednesday from 10:30 a.m. to noon at the conference room in Soldiers and Sailors Memorial Hospital in Wellsboro. Free. FMI: 570-723-0760.

Alzheimer's Support Group - meets every second and fourth Tuesday at 7 p.m. in the Calvary United Methodist Church Friendship Center, Room 1 in Lawrenceville. Free. FMI: 570-625-0008.

A Hope 4 Lyme, Inc. - Meets monthly. FMI: 570-537-6616, 607-329-1849 or ahopec4lyme@yahoo.com.

FOOD PANTRIES

CSFP/Senior Share Food distribution - Every fourth Tuesday, 10 a.m. until 1 p.m., at The Compassion Center, Route 49 West, one mile on right, past CV High School. For those who have been pre-registered. FMI: 814-367-2221.

Millerton Food Pantry - Every third Wednesday, 9-11 a.m., at the Millerton UMC, Route 328, Millerton. FMI: 570-537-2444 or leopard@npacc.net.

Food Pantry for Westfield - Every second Tuesday and Wednesday of the month, 9 a.m. to noon at The Compassion Center, Route 49 West, one mile on right past CV High School. FMI: 814-367-2221.

ALCOHOLICS ANONYMOUS

FMI: www.aa46.org

Every Saturday - 8 a.m., Open Meeting at Covington United Methodist Church, Covington; 8 p.m., closed meeting at Senior Center in Wellsboro; 8 p.m., St. James Episcopal Church, Mansfield.

Every Sunday - 7:30 a.m., Women's Meeting, Covington United Methodist Church, Covington; 7 p.m., Morris Fire Hall.

NARCOTICS ANONYMOUS

FMI: 570-404-8335

Every Tuesday - 8 p.m. every Tuesday at the Blossburg United Methodist Church.

Every Friday - 7 to 8 p.m., every Saturday from 6:30 to 7:30 p.m. First Presbyterian Church of Wellsboro.

Every Monday - 8 p.m., First Baptist Church, Wellsboro; Every Monday, 6 p.m., Open meeting at Millerton Wesleyan Church, Millerton. FMI: 570-537-3028.

NARANON

FMI: 215-237-8473,
hcutler56@gmail.com or
570-439-1417
pso976@hotmail.com

Every Friday - 7 p.m., First Presbyterian Church of Wellsboro, 130 Main St., Wellsboro. A 12-step support group for family and friends concerned about a loved ones addiction problem.

AL ANON

FMI: 1-800-359-1008
www.cpaafg.org.

Every Saturday - 11 a.m., Soldiers and Sailors Memorial Hospital, Room 41, Wellsboro.

Every Sunday - 7 p.m., Morris Fire Hall Social Hall.

Every Tuesday - 8 p.m., St. Peter's Catholic Church, Wellsboro.

NO MEETING

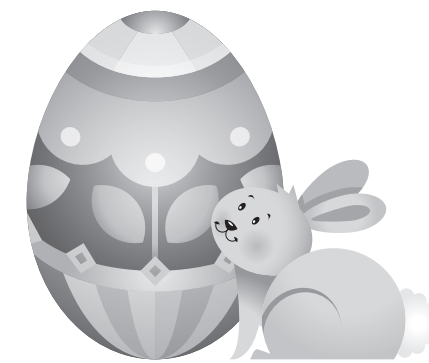
Fibromyalgia Support Group - No meeting, support network. FMI: 814-367-5875.

From Grief to Hope - For widows and widowers. No meeting. FMI: 570-724-2617.

Christian Universalism discussion group - informal meeting over coffee bi-monthly in the Mansfield area. Looking for new members. FMI: scruffino@verizon.net.



CONTACT US: The Community Reminders is a listing of events and meetings taking place from this weekend to next. To have your event or meeting listed, send the name of the group, date, time and place of meeting, along with a contact and number, to rheitzenrater@tiogapublishing.com, fax 570-724-2278 or write "Community Calendar," The Wellsboro Gazette, PO Box 118, Wellsboro, PA 16901.



MONDAY, APRIL 21

Quilt Guild meeting - at 7 p.m. at the Gmeiner in Wellsboro. FMI: 570-724-6372.

The Deflowering of Eva Van End - movie at 6:30 p.m. in room 317 in Alumni Hall at Mansfield University.

TOPS #797, Wellsboro - 8:45-9:15 a.m. weigh-in, meeting follows, St. Paul's Episcopal Church. FMI: 570-376-3451 or 570-723-1871.

Weight Watchers - 5 p.m. weigh-in, 5:45 p.m. meeting, United Methodist Church, Wellsboro. FMI: 570-724-7572 or drubin@ptd.net.

TUESDAY, APRIL 22

Expectant Parent Classes - at 7 p.m. at Soldiers and Sailors Memorial Hospital. Free. This week is a class on Labor and Delivery and will be touring the OB unit. Classes are in the '41 room at Soldiers and Sailors Memorial Hospital in Wellsboro. FMI: 570-723-0375.