

Atlantic City Regional Transportation Plan **UPDATE**

**Presentation to the
AC Chamber of Commerce**

July 15, 2010

Tropicana Hotel & Resort, Atlantic City, NJ

Why the AC Regional Transportation Plan

- A comprehensive and forward-thinking transportation program for the South Jersey Region.
- A roadmap for addressing existing needs while preserving alternatives of future growth and environmental stability.
- Support for the travel and tourism industry in Atlantic City and other South Jersey shore destinations.

Initial Catalysts that Guided the AC RTP

Major Plans Announced for Growth and Expansion by the Casino Industry

Pro-active Public Sector

A Need for Transportation Improvements in the Region Based on Existing Conditions

Planning and Design Time Needed to Complete Infrastructure Improvements

Five key guiding principles of the AC RTP

Provide improvements only when and where needed

**Use transportation to support the regional economy
with emphasis on Atlantic City**

Incorporate smart growth land use principles

**Employ innovative financing techniques
to ensure timely implementation**

**Evolve and modify as needed to reflect changing
conditions and local, regional and state needs.**

Original AC RTP Implementation Plan

Early Initiatives

1. Mississippi Ave. Improvements
2. Mississippi Ave. Parking Garage
3. Connecticut Avenue Improvements
4. Pacific-Atlantic Avenue One-Way Pair Corridor
5. Pacific-Atlantic Ave. Signal Improvements
6. Signal Improvements for Rest of AC
7. Local Transit Rationalization
8. ACBC Signage Improvements
9. Regional Traffic Operations Center
10. WB ACE Widening
11. New ACRL Airport Station
12. Direct Connection between ACE-ACY
13. ACY Airport Expansion Improvements
14. Linking Land-Use/Worker Housing to Transportation
15. Interagency Implementation Team
16. City Traffic Engineering Staff

Phase I

1. ACE-GSP Interchange Improvement
2. GSP Exit 44 Full Interchange
3. Absecon Blvd. Elevated Roadway Section
4. Albany Avenue Corridor Improvements
5. Corridor Pedestrian Crossing
6. Bikeway on the Boardwalk

Phase II

1. Enhanced ACRL Service
2. Atlantic City Transit Hub
3. Enhanced Bus Service (GSP, ACE)
4. BRT on Newfield Branch
5. Pleasantville Gateway Transportation Center
6. Regional Intersection Upgrades
7. GSP Widening
8. Expanded/New Interchanges for GSP

Phase III

1. Regional Multimodal Transportation Center
2. Regional Multimodal Transportation Center Access Improvements
3. Fixed Guideway System between ACY and Atlantic City
4. Pacific-Atlantic Transit Enhanced One-way Corridor
5. Water Taxi Service
6. Citywide Greenways

Current State of Play - Changing Conditions

**Gaming competition from Pennsylvania & Delaware
and the economic recession**

Financial market crisis

**ACY's strategic importance to the region
continues to expand**

Traditional sources of transportation funding have dried up

Changing Catalysts Have Influenced Near-Term AC RTP Implementation by Emphasizing Projects that:

- Address **existing** regional transportation needs
- Focus on anticipated growth of the ACY and Next Gen Research Park as well as the casino and seasonal tourism industries
- Create near-term employment opportunities
- Enhance visitor and resident perception of the region
- Stimulate the region's economic growth

ACRTP Projects Currently In the Construction Phase

Mississippi Avenue Two-Way Conversion

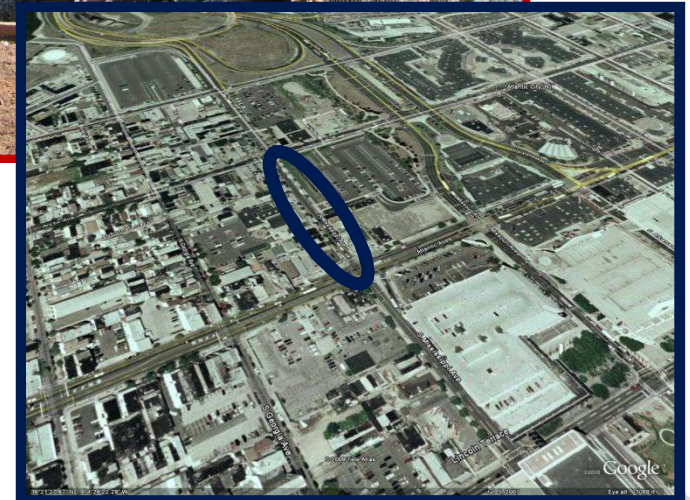
Strategy : Provide for two-way operation of Mississippi Ave. from Pacific Ave. to Fairmount Ave.

Benefits:

- Better access to and from the Atlantic City Brigantine Connector , the ACE and Boardwalk Hall, especially during special events
- Easier local and visitor circulation from the downtown to the marina area;

Project Status

- Final Design and right of way acquisition complete
- Project Demolition currently underway
- SJTA awarded the contract in April with work expected to begin in late August 2010. of 2010.



Mississippi Avenue Garage



Strategy: Construct a solar powered 1,200 parking garage in the AC Downtown near the Walk Retail Stores, the Convention Center and Boardwalk Casinos.

Benefits

- Provides needed parking supply for large events and for shoppers at the Walk retail stores;
- Will create 250 construction jobs in 2010 and 2011
- Will provide electric power hook-ups for alternative energy vehicles

Project Status

- Final Design Complete
- Construction contract awarded pending legal review
- Construction completion 14 months from contract award



South Inlet Transportation Improvements



Strategy: Provide for two-way enhanced operation of Melrose and Connecticut Aves.

Benefits:

- Better access to and from the South Inlet area of the City;
- Additional roadway capacity to handle the increased traffic in the area from the Revel Hotel and Casino Resort and other retail and residential growth;
- Creation of approximately 60 construction jobs during the life of the project.

Project Status:

- Final Design and right of way acquisition complete
- Construction contract in the bid stage
- Once awarded will take 14 months to construct.

Martin Luther King Boulevard Improvements

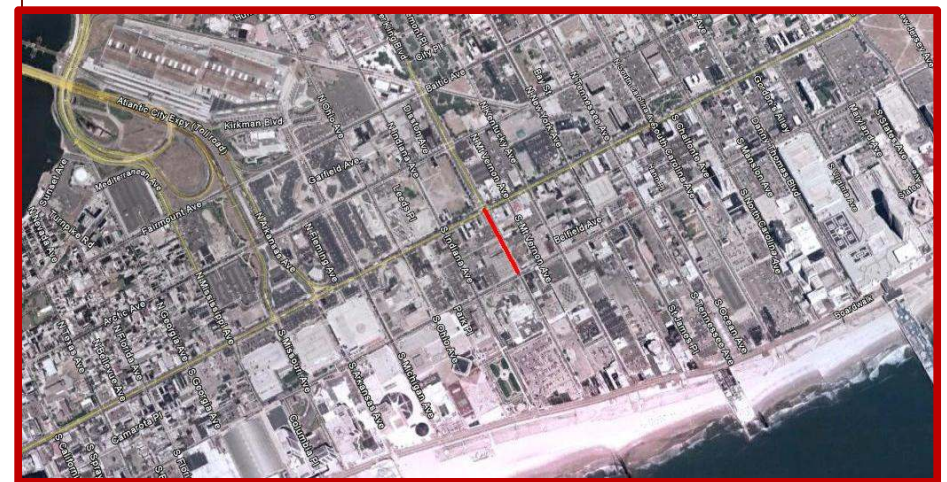
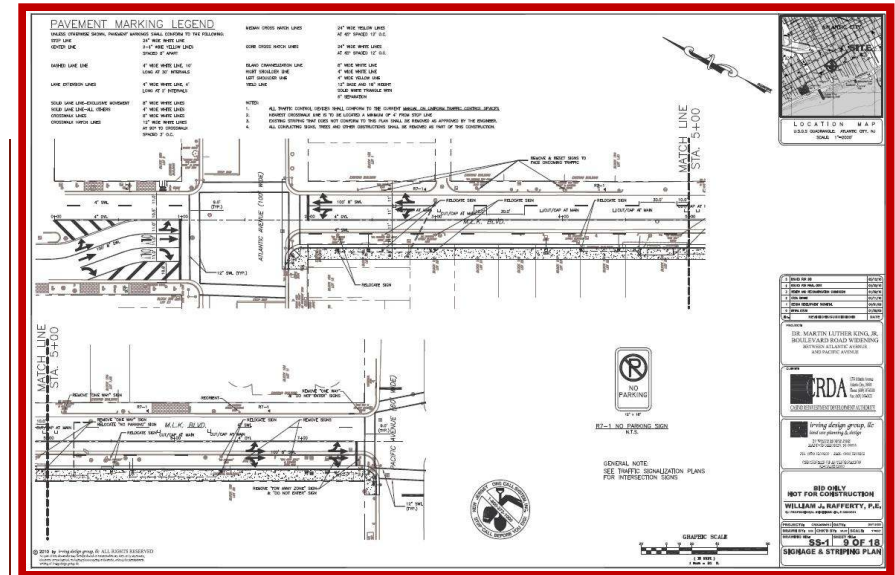
Strategy : Provide for two-way operation of Martin Luther King Boulevard from Pacific Ave. to Atlantic Ave.

Benefits:

- Provides direct access to and from Absecon Boulevard and the AC Brigantine Connector to Pacific Ave. and boardwalk casinos via MLK Boulevard.
- Creation of approximately 60 construction jobs during the life of the project.
- Easier local and visitor circulation from the downtown to the marina area;

Project Status

- Final design and right of way acquisition complete
- Project Demolition currently underway
- Construction contract in the bid process, with project slated for completion within 3 months of award.



Additional AC RTP Projects in Construction Phase

- Westbound Atlantic City Expressway lane addition from MP 8 to MP 42
- Atlantic City International Airport Expansion Improvements

ACRTP Projects Currently Undergoing Preliminary and Final Design

- Atlantic and Pacific Avenue Optimized
 - Interim Traffic Operations Center

ACRTP Projects Currently In Planning and Conceptual Design Phase

- Citywide Way-finding Signage Program
- AC Expressway Direct Connect to ACY
- Absecon Blvd. Elevated Section
- Route 40/322 Improvements

ACRTPisaLiving Document

