



WEST LAKE CORRIDOR PROJECT NICD

Northern Indiana Commuter Transportation District

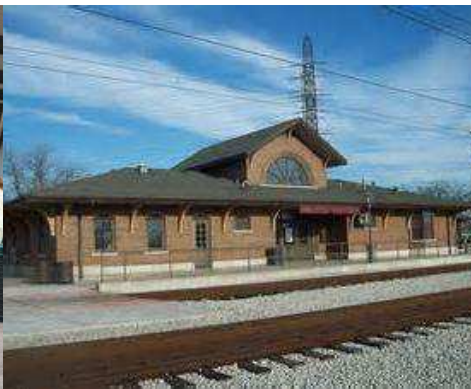
Dyer Town Council Meeting

September 10, 2015



Meeting Agenda

- West Lake Project Overview
- Environmental Process
- Overview of Support Facilities
- Munster/Dyer Main St. Station
- Munster/Dyer Facility Site Locations
- Schedule and Next Steps

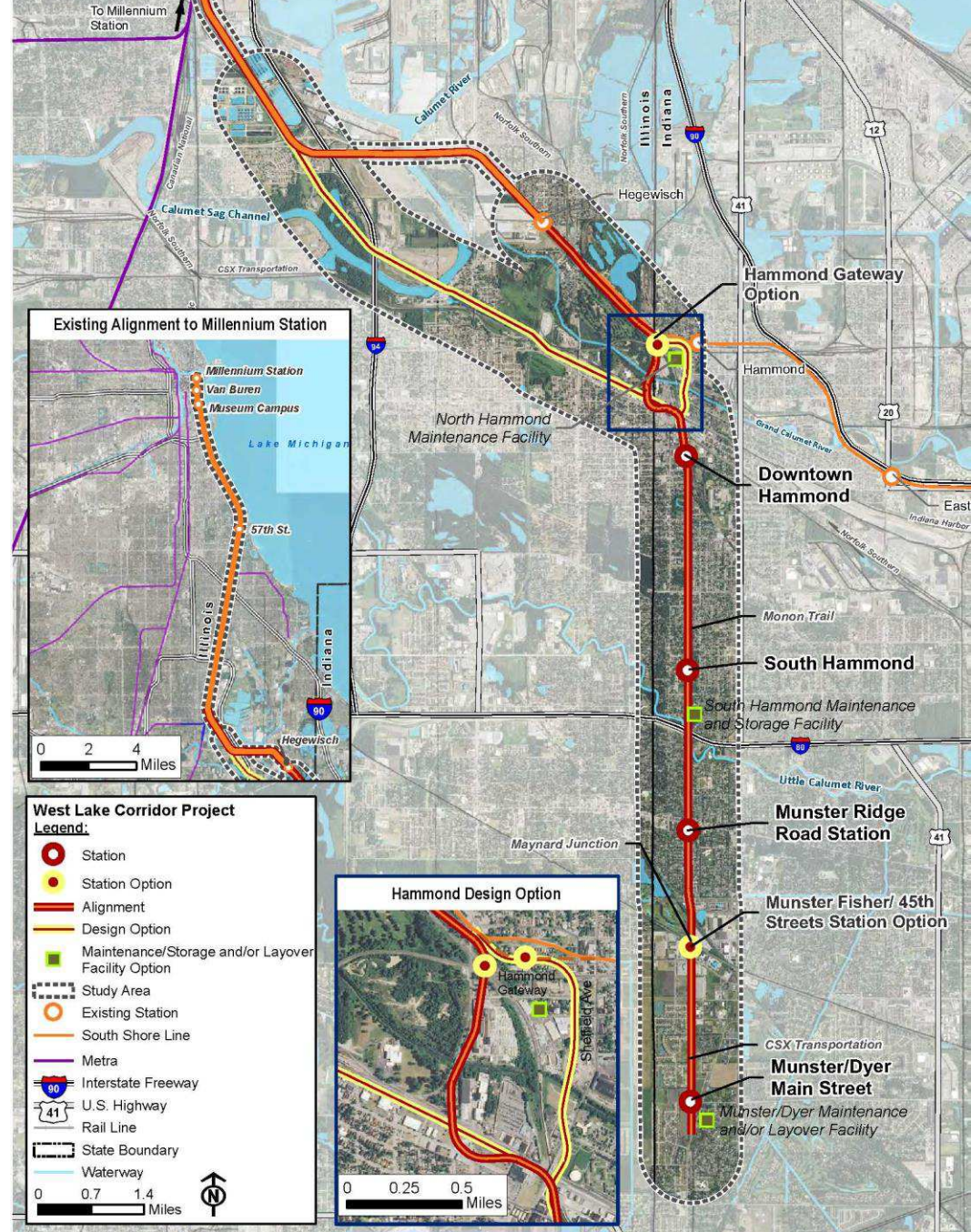


Project Overview

- **FTA and NICTD are Conducting an Environmental Review of the West Lake Corridor**
- **The Study includes Rail Based Service between the Munster/Dyer area and Metra's Millennium Station in Downtown Chicago**
- **The Study evaluates Alignments, Stations and Operating Facility Locations in the Corridor**

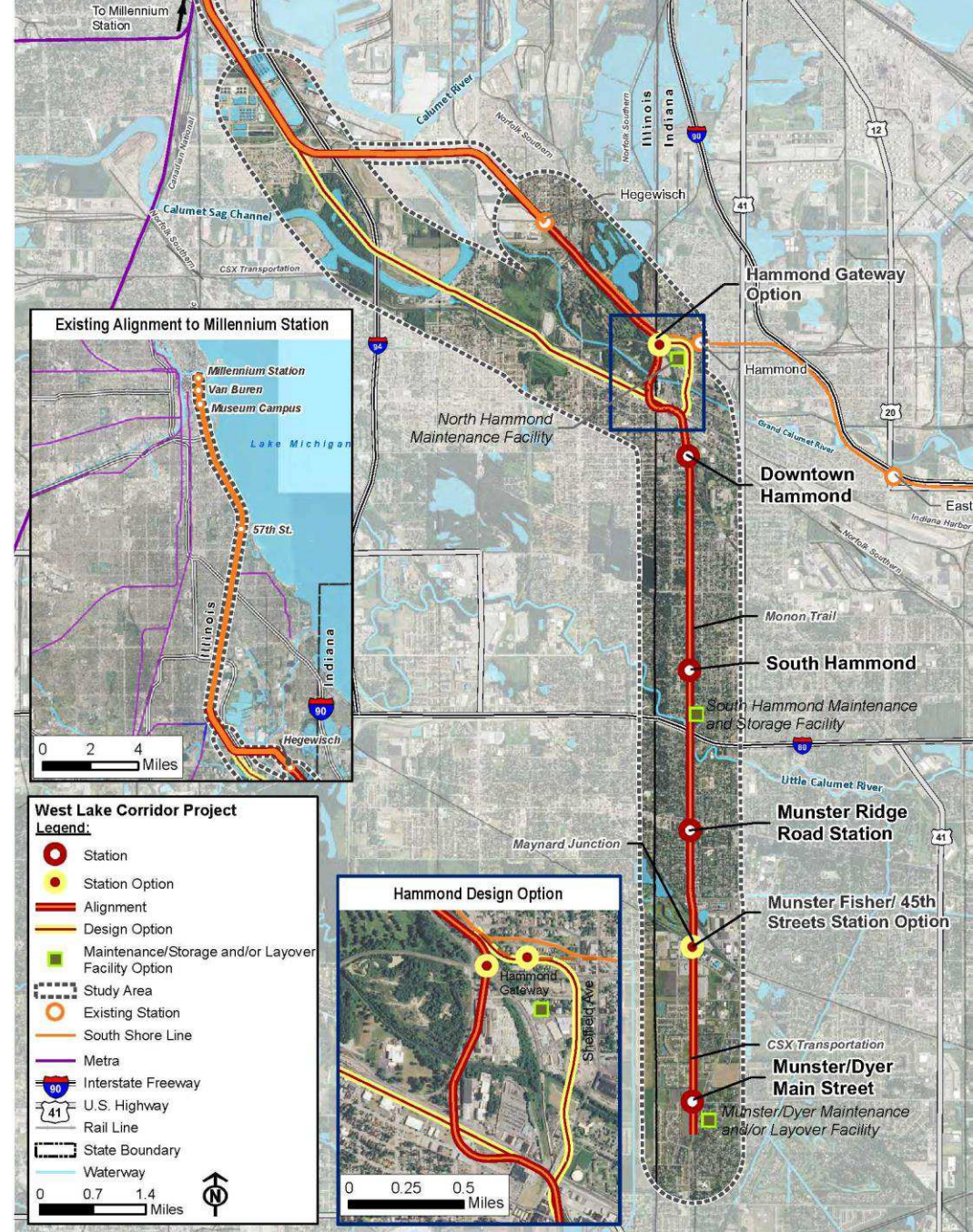
West Lake Project Overview

- 9-Mile Extension of Existing South Shore Line (SSL)
- 12 Trains per Weekday
- 4 Stations in Hammond, Munster, and Dyer
- Maintenance Facility
- Options for Alignment, Stations, Maintenance and Layover Facilities



Alternative Options

- Indiana Harbor Belt (IHB) Alignment
- Hammond Design Option Alignment
- Station Options
 - Hammond
 - Munster
- Maintenance Facility
 - Hammond – 2 sites
 - Munster/Dyer
- Layover Facility
 - Munster/Dyer

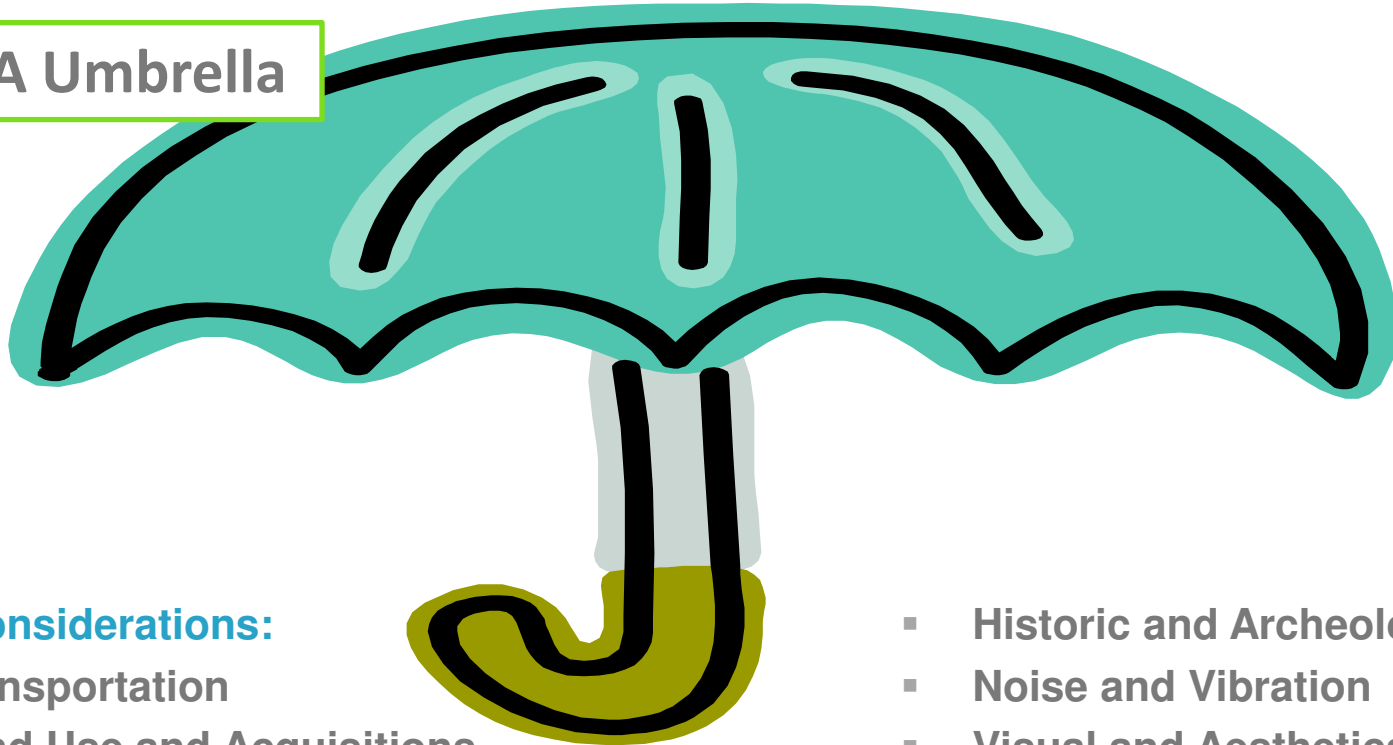


Why So Many Alternatives?

- Required to evaluate all feasible alternatives meeting the purpose and need of the project
- To consider and evaluate each alternative in a comparable level of detail
- To avoid any indication of a bias towards a particular alternative(s)
- Field work is included for all alternatives minimizing the need for additional investigation

National Environmental Policy Act

NEPA Umbrella



Key Considerations:

- Transportation
- Land Use and Acquisitions
- Economic Development
- Neighborhoods and Community Facilities
- Environmental Justice
- Parks and Recreational
- Historic and Archeological
- Noise and Vibration
- Visual and Aesthetics
- Water and Ecological
- Farmlands
- Hazardous Materials
- Safety and Security
- Short-Term Construction

Environmental Impact Statement Process

WE ARE HERE

Scoping and Screening

- Identify Issues
- Develop and screen alternatives

Draft EIS

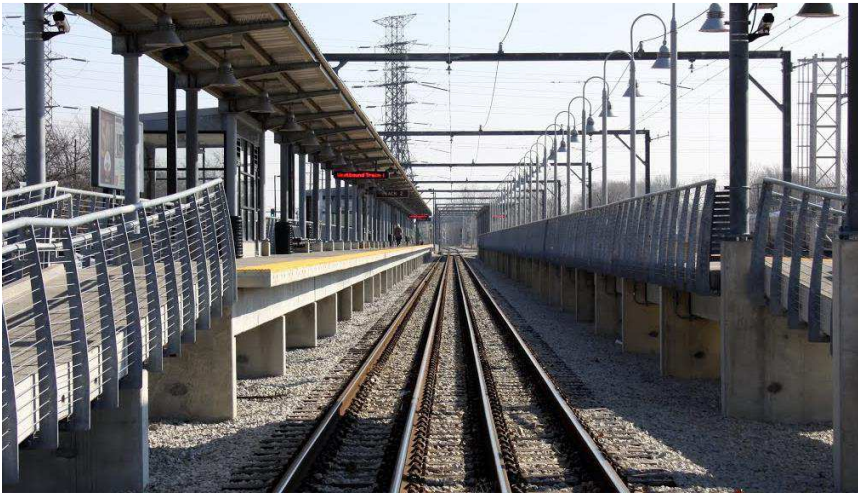
- Prepare Technical Reports
- Prepare Draft EIS on remaining alternatives
- Circulate Draft EIS
- Hold Public Hearings
- Prepare request to enter Project Development

Final EIS Record of Decision

- Respond to comments
- Prepare Final EIS
- Prepare Record of Decision

Stations

- Boarding Platforms
- Shelters
- Parking
- Multi-Modal Access



Hegewisch Station, SSL



Dune Park Station, SSL



East Chicago Station, SSL

Vehicle Technology

- Existing South Shore Electric Trains





Denton County A-Train Maintenance Facility

Maintenance Facility

- Shop Building for Maintenance of Vehicles
- Storage Tracks
- Parking and Support Facilities

Layover Facility

- Welfare Building for Crew
- Storage Tracks for Overnight Layover
- Parking

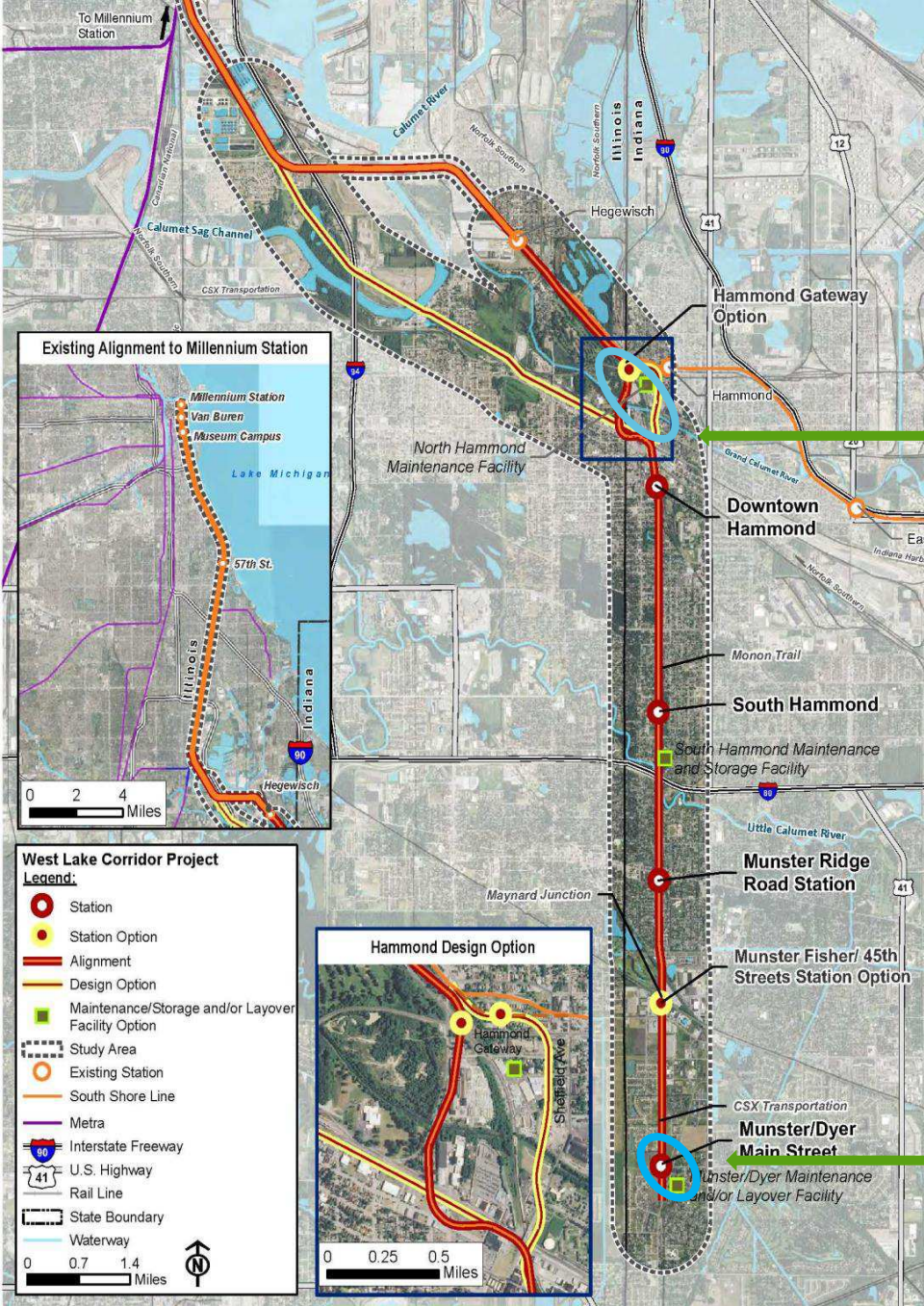


Metra Electric District – Richton Layover

Operations Facilities

If maintenance facility is here...

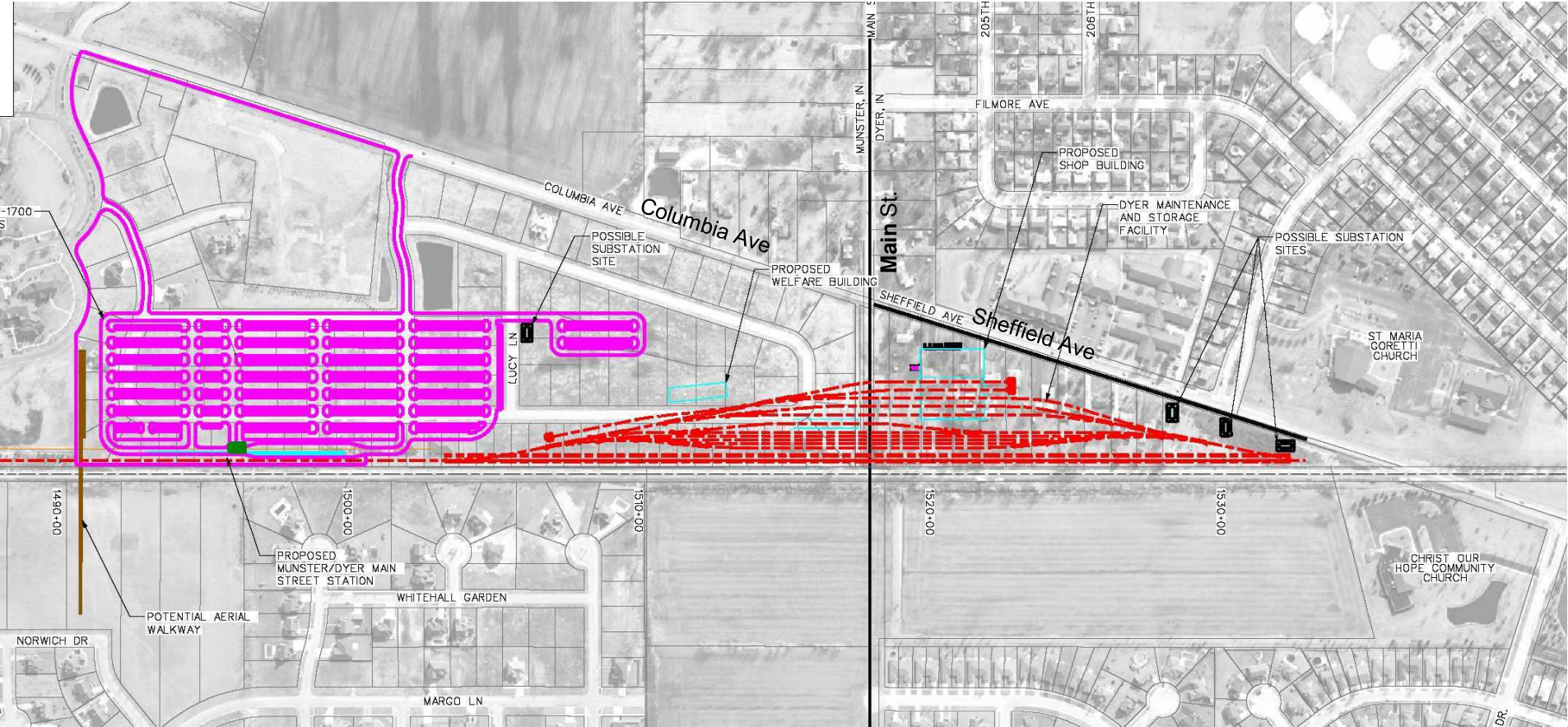
...layover facility is needed here



Operations Facilities

Munster/Dyer Station and Maintenance Facility

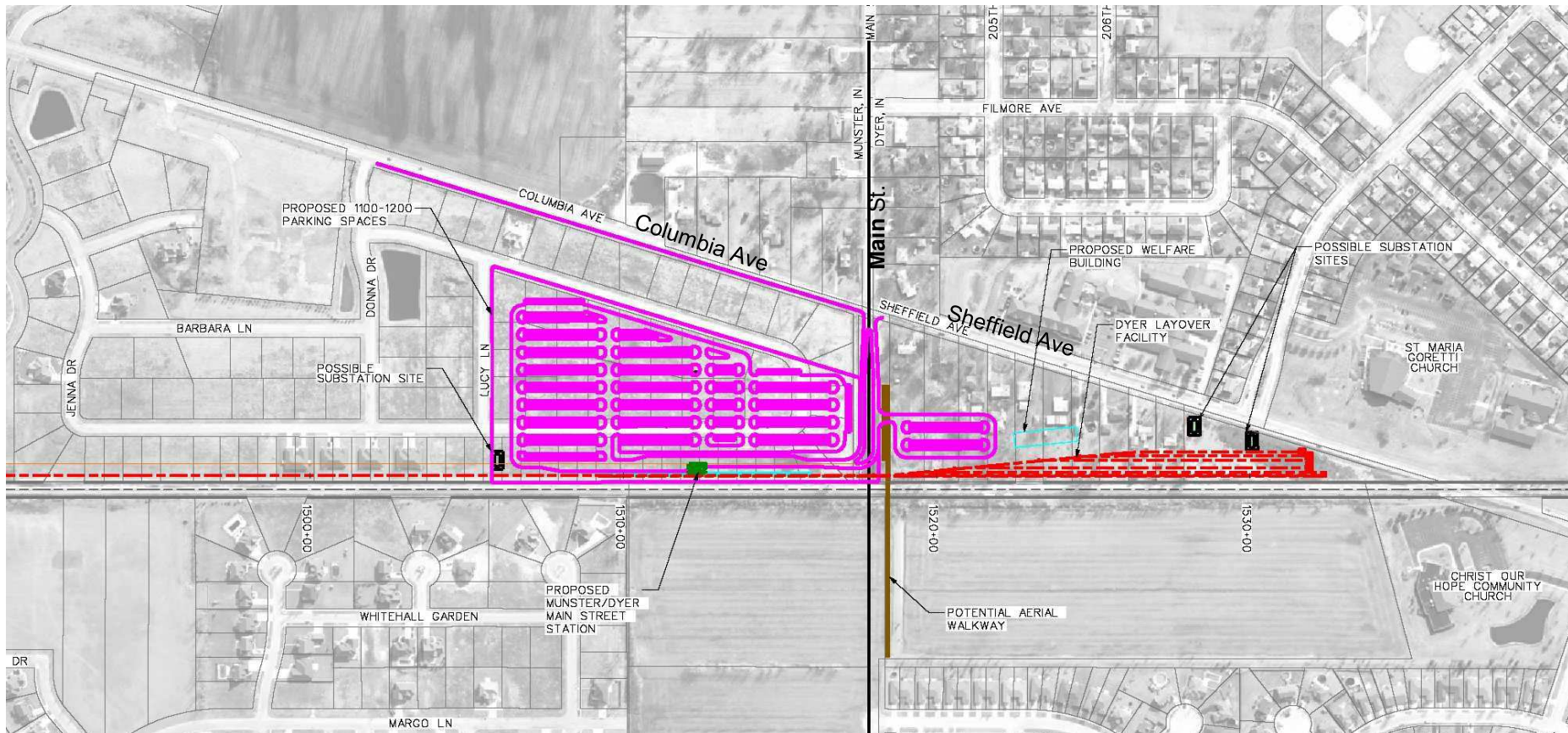
– inspect, repair, clean, and store vehicles



Operations Facilities

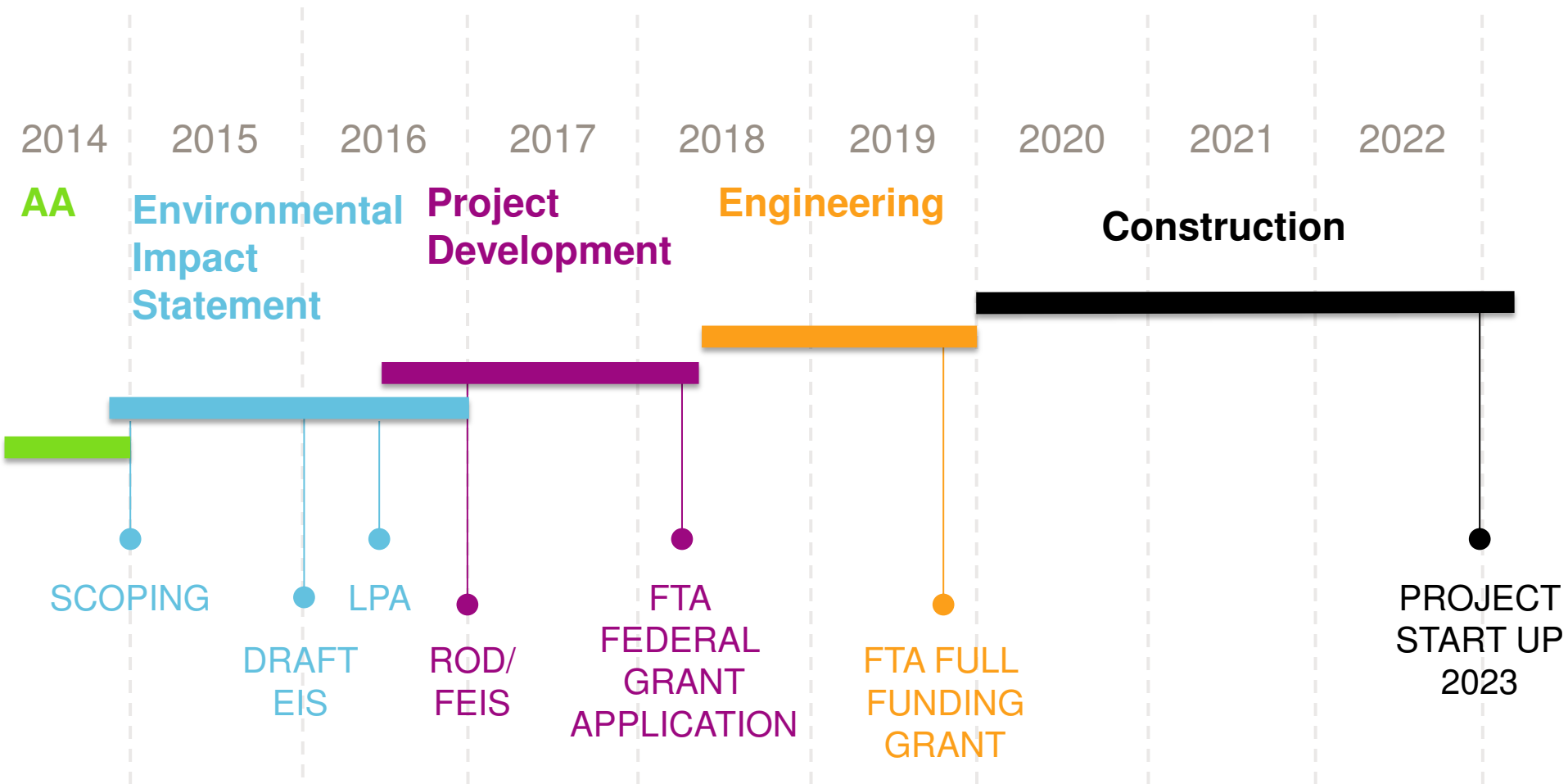
Munster/Dyer Station and Layover Facility

- overnight or mid-day storage, light interior cleaning and minor repairs,





West Lake Overall Project Schedule

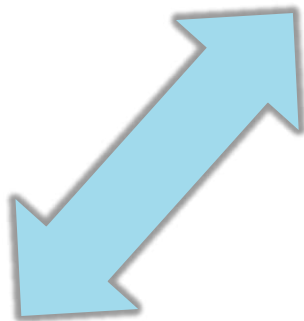


Next Steps

- **Public Workshops – November 2015**
- **DEIS Public Hearings – Spring 2016**
- **DEIS Public Review – Spring 2016**
- **Begin Project Development – Summer 2016**

Key to Success: Partnerships

NICTD



**Community,
Stakeholder &
Agency
Partners**



How Can You Participate and Stay Informed

- Project Website: <http://www.nictdwestlake.com/>
- Email: project.email@nictdwestlake.com
- Call: 219-250-2920
- Mail: NICTD West Lake Corridor Project
33 East U.S. Highway 12
Chesterton, IN 46304



WEST LAKE CORRIDOR PROJECT NICD

Northern Indiana Commuter Transportation District

THANK YOU!

