

John Yelkich State Farm Newsletter

In This Issue:

- State Farm Health Insurance Products
- State Farm Pocket Agent App
- Meet the John Yelkich State Farm team!

Contact us at:

John Yelkich State Farm

2506 E. 37th Avenue
Lake Station, IN 46405

Ph# (219) 963-6347
Fx# (219) 963-6958
John4insurance.com

Our Mission:

We will strive to not only meet our customer's expectations but to exceed them at every level.

State Farm Health Product Offerings

Today, it's more important than ever to have the right health coverage. Think about it:

***If you were disabled and couldn't work, would your existing coverage replace your lost earnings?*

***If you needed specialized medical care, would a possibly time-consuming referral be required first?*

***If your medical expenses exceeded your current coverage limits, how would you pay?*

***Do you have supplemental coverage for copayments, deductibles, and coinsurance expenses?*

With health care costs rising six percent per year¹, over two times faster than the rate of inflation², you don't want to be caught without enough coverage.

Finding the coverage you and your family need is as easy as talking to your State Farm agent John Yelkich. You may be surprised to learn State Farm offers a variety of basic and supplemental health coverages such as:

Basic Health Coverage

- Including Individual and Short Term Medical

Supplemental Medical

Disability Insurance

-Including Income,

Mortgage, and Credit Disability Insurance

Long-Term Care Insurance

Medicare Supplement Insurance

Choosing the right health care coverage is an important decision and fortunately John Yelkich is here to help. John and his team can assess your needs and help you choose just the right coverage. Give him a call today.



¹ 17th Annual National Business Group on Health/Towers Watson Survey Report 2012
² usinflationcalculator.com/current-inflation-rates/

State Farm Pocket Agent App

Convenience at your fingertips! Now State Farm services and unique mobile features are closer than ever and here to help you in any and every way possible.

With the FREE Pocket Agent app from State Farm you can easily submit a claim, take and

send photos to record vehicle damage, and find a State Farm Select Service repair facility. You can also contact your agent, review your policy details including a copy of your insurance card and much more all from your iPhone, iPod Touch, or your Android device.

At John Yelkich State Farm, we can help you install or answer questions about the Pocket Agent app.

Some of the Pocket Agent features are only accessible to registered statefarm.com users. So register and give it a try today!

Meet the John Yelkich State Farm Team!



“We help people manage the risks of everyday life, recover from the unexpected and realize their dreams.”



John M. Yelkich, Jr.

Title: Agent

State Farm Specialty: Financial Services

Hometown: Lake Station, IN

High School: South Central High School

Hobbies: Drag Racing

Did you know... John received his B.A. in Sociology from Valparaiso University.



Kristin Brindley

Title: Office Manager

State Farm Specialty: Property, Casualty, Bank, & Life

Hometown: Crown Point, IN

High School: Merrillville High School

Hobbies: Food, Travel, and Family/Friends

Did you know... Kristin received her B.A. from Indiana University-Bloomington and has nine years' experience in customer service.



Hugo Barajas

Title: Personal Account Representative

State Farm Specialty: Property, Casualty, and Bank

Hometown: Gary (Aetna), IN

High School: Andrean High School

Hobbies: Family/Friends, Football, Movies

Did you know... Hugo has over twelve years' experience in credit, collections, bank, and customer service.



Michael Lukacs

Title: Personal Account Representative

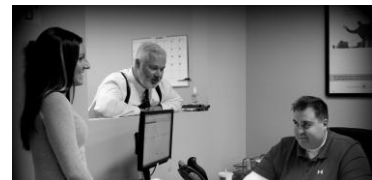
State Farm Specialty: Property, Casualty, Life, and Health

Hometown: Chicago, IL

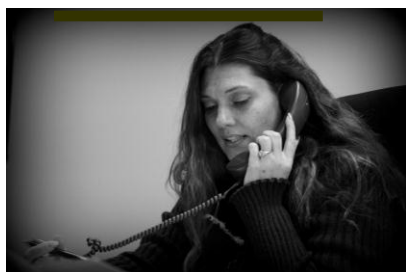
High School: Lake Forest High School

Hobbies: Football, Golf, Movies

Did you know... Mike loves golf and is a big Greg Norman fan.



Kristin advising John and Mike about where to go for lunch



Kimberly Taylor

Title: Personal Account Representative

State Farm Specialty: Property, Casualty, and Commercial Policies

Hometown: Lake Station, IN

High School: Edison Sr/Jr High School

Hobbies: Spending time with family, Football, Movies

Did you know... Kim has over ten years' experience in the insurance field and over thirteen years' experience in the customer service industry.



Visit us at:

www.john4insurance.com

OR

