



INDIANA  
DEPARTMENT OF  
CHILD  
SERVICES

**Child Abuse and Neglect  
Annual Report of Child Fatalities  
State Fiscal Year 2005  
(July 1, 2004 to June 30, 2005)**

*Protecting our children,  
families and future*

**Child Abuse and Neglect  
Annual Report  
of  
Child Fatalities**

**2005**



**State of Indiana**  
Department of Child Services

Published May 2006





## Department of Child Services Child Abuse and Neglect Annual Fatality Report For State Fiscal Year 2005

### Annual Fatality Report

#### Preface

Every year, the State of Indiana, through the Department of Child Services (DCS), reviews identified allegations of child fatalities that occurred as a result of abuse and/or neglect. Abuse is defined in IC 31-34-1-2 as an act in which a child's physical or mental health is seriously endangered due to injury by the act or omission of the child's parent, guardian, or custodian. Neglect is defined in IC 31-34-1-1 as an act in which a child's physical or mental condition is seriously impaired or seriously endangered as a result of the inability, refusal, or neglect of the child's parent, guardian, or custodian to supply the child with necessary food, clothing, shelter, medical care, education, or supervision. Indiana law mandates that anyone who suspects child abuse and/or neglect must make a report to DCS.

Each investigated fatality is reviewed by a team of professionals from the county in which the child lived. The team reviews the evidence and determines if the death was due to negligence or physical harm caused by a parent, guardian or custodian. After the local team makes its determination, the State Fatality Review Team provides a supplementary review of each case and makes recommendations to the local DCS office regarding the findings of the local team. The reports are finalized at the state office of the DCS and the data is collected from the findings of the investigation.

The purpose of this report is to provide demographic information related to deaths of Indiana children that were the result of abuse and/or neglect. The child fatalities within this report occurred during the State Fiscal Year (SFY) 2005, July 1, 2004 to June 30, 2005. The report is abridged in the Executive Summary and highlights changes or trends from the previous year. This Summary also includes summary data of all child fatalities from SFY 2005, including such demographic information pertaining to the victims, perpetrators and households of these child deaths. Every attempt is made to clarify the factors contributing to these deaths and the decision making behind what the Department of Child Services finds as abuse and/or neglect.

DCS collects data on child fatalities in an effort to understand the underlying issues related to child abuse and neglect. In addition, the information may help in the development of prevention and educational programs for the community, both professional and non-professional. It also is used to evaluate, review, and modify policy, practice and procedure where warranted. DCS recognizes the value of community protection and encourages all members of the public to become partners in preventing child deaths. The information of these deaths should be shared to educate the community and to solicit feedback for improvements to our practice and in ways the community can be more involved. In order to protect children from abuse and neglect, DCS must be proactive in the community. Neighborhoods must seize every opportunity to educate its citizens on signs and symptoms of abuse and neglect, including the associated risk factors.

The data assembled in this report is collected from multiple sources, including DCS records, death certificates, coroner's report, and law enforcement records. Information from child fatality investigations are distinguished by DCS into categories of types of maltreatment. Often these children may have suffered multiple injuries, or are victims of both abuse and neglect. In every case DCS has attempted to accurately depict the decisive factor of maltreatment that resulted in the child's death. In addition, demographic information is collected on the surviving

---

Prepared by:  
Office of Data Management



Source:  
Department of Child Services



## Department of Child Services Child Abuse and Neglect Annual Fatality Report For State Fiscal Year 2005

siblings and family members.

This report contains information on 54 child fatalities at the hands of parent, guardian, or custodian, and separately presents information on three child fatalities at the hands of a babysitter or alternate caregiver. Note this distinction when reviewing this annual report. We have separated the deaths in this manner as it is important to acknowledge that three children died while with an alternate caregiver, even though DCS is not required by law to investigate such deaths. In previous years, fatalities of both categories of caregivers were included in the State's reported totals. These three children are in addition to the total number of child deaths in SFY 2005 as a result of abuse and neglect of 54.

Summary information indicates:

- 24 of the fatalities were due to physical abuse
- 30 of the fatalities were due to neglect
- The majority of children that died were under the age of five
- The majority of the alleged perpetrators were under the age of thirty
- The majority of the alleged perpetrators and their victims were white
- The primary type of physical abuse causing death was beating
- The primary type of neglect causing death was positional asphyxiation

---

Prepared by:  
Office of Data Management



Source:  
Department of Child Services



**Department of Child Services  
Child Abuse and Neglect Annual Fatality Report  
For State Fiscal Year 2005**

**Annual Fatality Report**

**Executive Summary**

There were 54 abuse and neglect fatalities substantiated in State Fiscal Year (SFY) 2005. Of these 54 fatalities, 24 (44%) were due to abuse and 30 (56%) were due to neglect. While this reflects an overall decrease in fatalities from SFY 2004, the fatalities attributed to abuse increased and those attributed to neglect decreased. The child deaths from abuse increased from 22 to 24 from SFY 2004 to SFY 2005, and the deaths from neglect decreased from 35 to 30 within the same time frame.

Overall, the primary cause of all substantiated deaths was attributed to physical abuse/beatings, accounting for 13 (24.1%) of the total 54. Positional Asphyxiation deaths was the second leading cause of death with nine (16.7%), followed by 8 deaths by drowning (14.8%), 5 deaths (9.3%) were attributed to asphyxiation/suffocation/strangulation, and 4 vehicular deaths were reported (7.8%). There were 3 deaths (5.6%) from shaken baby syndrome, 2 gun related deaths (3.7%), 2 deaths from scalding/burns (3.7%) and 2 (3.7%) drug-related conditions of the child deaths. There was one child death attributed to fire, medical neglect, suicide, wounds/punctures/bites, each accounting for 1.9% of the fatalities reported. There was one undetermined cause of death.

**Fatalities due to physical abuse**

There were 24 abuse fatalities in SFY 2005. The primary cause of abuse deaths was attributed to physical abuse/beatings accounting for 13 of the abuse deaths. The second leading cause of abuse deaths was asphyxiation/suffocation/strangulation accounting for 4 deaths. The remaining 7 abuse deaths were attributed to shaken baby syndrome (3), gun-related deaths (2), 1 fatality due to scalding/burns, and 1 death due to wounds/punctures/bites. Included in these 7 abuse deaths were 3 parent/child murder-suicides involving two gun-related and 1 stabbing.

Physical abuse/ beatings and shaken baby syndrome fatalities both increased by 1 from SFY 2004 to SFY 2005 going to 13 from 12 and to 3 from 2, respectively. The remaining increases in the primary cause of death statistics from SFY 2005 to SFY 2004 are as follows: drug-related conditions of the child increased to 2 from 1, scalding/burns increased to 2 from 1, suicide increased to 1 from 0, wounds/punctures/bites increased to 1 from 0, and health endangering/lack of supervision increased to 1 from 0. There was a decrease of one in the sexual assault category going to 0 in SFY 2005 from 1 in SFY 2004.

There was an increase of 1 parent/child murder-suicides from SFY 2004 to SFY 2005. In SFY 2005 there were 2 gun-related child fatalities and 1 stabbing fatality from a parent/child murder-suicide. In SFY 2004 there were 2 gun-related child fatalities involving a parent/child murder-suicide.

Conversely, gun-related deaths decreased by 2 going to 2 in SFY 2005 from 4 in SFY 2004. Both gun-related deaths continued to represent previously mentioned fatalities that involved parent/child murder-suicides.

**Fatalities due to neglect**

There were 29 neglect fatalities in SFY 2005. The primary cause of neglect deaths was positional asphyxiation which accounted for 9 neglect deaths. Drowning was the second leading cause of

Prepared by:  
Office of Data Management



Source:  
Department of Child Services



## Department of Child Services Child Abuse and Neglect Annual Fatality Report For State Fiscal Year 2005

neglect deaths accounting for eight deaths, followed by four vehicular deaths, and two deaths attributed to the drug-related conditions of the child. The remaining 6 neglect deaths were attributed to isolated causes of asphyxiation/suffocation/strangulation, fire, medical neglect, scalding/burns, suicide, and 1 undetermined cause of death.

Unfortunately, positional asphyxiation deaths in SFY 2005 increased by seven from the previous year. SFY 2005 reported positional asphyxiation deaths as the second leading cause of *all* fatalities accounting for nine of the total 54 fatalities compared to SFY 2004 which reported 2 positional asphyxiation deaths of the total 57 fatalities. This is an increase from 3.5% to 16.7% within twelve months. Of the nine positional asphyxiation deaths, five involved the use of alcohol or drugs by a parent. Six of the nine positional asphyxiation deaths occurred when another person rolled on the child. These fatalities are not calculated from incidents of bed-sharing, rather when the parent created an unsafe sleeping environment for the child.

While total asphyxiation deaths increased by three this year going to 5 in SFY 2005 from two in SFY 2004, medical neglect deaths decreased by three going to 1 in SFY 2005 from four in SFY 2004.

Vehicular deaths decreased from 19.3 % to 7.4% within the last twelve months. In SFY 2005, vehicular deaths accounted for four of the total 54 fatalities, reflecting a decrease of seven from the previous year. In SFY 2004 vehicular death was the second leading cause of all fatalities accounting for 11 of the total 57 fatalities. All four of this year's vehicular fatalities involved drug or alcohol use. Of the four vehicular deaths, three involved collisions and one involved a vehicle hitting a child. Of the three fatalities involved in the collisions, restraints were present but not used in two cases, and one case indicated there were not proper restraints present.

Drug related conditions of the child accounted for 2 deaths in SFY 2005. These deaths are determined when the drug and/or alcohol use of the parent directly contributes to the death of the child as verified by medical professionals. Examples of this would include premature births of viable infants caused directly by the mother's drug use and not any other medical condition.

Fire deaths decreased from last year. In SFY 2005 fire deaths accounted for one of the 54 total fatalities, reflecting a decrease of five from SFY 2004 when fire deaths was the third leading cause of all fatalities accounting for six of the total 57 fatalities. Statistically, this represents a decline from 10.5% to 1.9%. Fires are considered when there are negligent acts by the parent which contribute to the fire.

Poisoning deaths reflected a 100% decrease from last year. SFY 2005 reported no poisoning deaths compared to SFY 2004 which reported five poisoning deaths of the total 57 fatalities.

Drowning deaths increased 6% from last year. SFY 2005 reported eight drowning deaths of the total 54 compared to SFY 2004, which reported 5 drowning deaths of the total 57 fatalities. Only one of the eight drowning deaths involved a bathing activity. The majority (seven) of the drowning deaths involved children playing in or near water while not properly supervised.

There were no changes in the number of fatalities for an undetermined cause of death. There was one in both SFY 2005 and 2004

---

Prepared by:  
Office of Data Management



Source:  
Department of Child Services



## Department of Child Services Child Abuse and Neglect Annual Fatality Report For State Fiscal Year 2005

### Characteristics of Perpetrators

There were 39 identified abuse perpetrators and 39 identified neglect perpetrators for SFY 2005. More than one perpetrator may be identified for each fatality.

Of the total 54 fatalities in SFY 2005, drugs or alcohol were factors in 18 of the fatalities. This reflects an increase from SFY 2004 when drugs or alcohol were involved in 10 of the total 57 fatalities.

As was true in the previous year, the majority of abuse and neglect perpetrators for SFY 2005 were White. Note there may be more than one perpetrator listed for each fatality. For abuse fatalities, White perpetrators comprised 26 of the 39 total abuse perpetrators, African American perpetrators comprised eight of the 39, American Indian or Alaskan Native comprised three of the 39, and one perpetrator was Hispanic and one was unknown. For neglect fatalities, White perpetrators comprised 31 of the total 39 neglect perpetrators, African American perpetrators comprised five of the 39, and three perpetrators were American Indian or Alaskan Native.

As was true in past years, the majority of perpetrators were natural parents. Twenty six of the 39 abuse perpetrators and 37 of the 39 neglect perpetrators were natural parents. This reflects an increase from SFY 2004 when 18 of the 31 abuse perpetrators and 40 of the 51 neglect perpetrators were natural parents. Again, note that the data for the 54 fatalities for SFY 2005 were separated into categories of parent/guardian/custodian and alternate caregivers.

Twenty one of the 39 of the abuse perpetrators were male. As in prior years, the majority of neglect perpetrators were female, specifically 28 of the 39.

The majority of the alleged perpetrators were under the age of thirty. As was true in previous years, the prevalent age category of the perpetrators in both abuse and neglect remained in the range of 20-24 years of age. SFY 2005 fatality data indicated that 14 of abuse perpetrators fell into this category, followed by 11 perpetrators in the 25-29 year old range. Eight perpetrators were in the 30-34 year old range, 3 were in the 35-39 year old range. Two perpetrators were in the 16-19 year old range and 1 perpetrator had an unknown age. As in abuse, the prevalent age category for the neglect perpetrators was in the 20-24 years old range. 14 perpetrators for neglect were within this age range, 13 perpetrators were in the 25-29 years old range, six perpetrators were in the 35-39 years old range, and three perpetrators were in the 40-49 years old range. Two perpetrators were in the 16-19 years old range and one perpetrator in the 35-39 years old range.

### Household Characteristics

As in the prior year, the majority of abuse and neglect occurred in two-parent households for SFY 2005. In abuse cases, 14 of the 24 abuse households were 2 parent households, while 9 were single parent and 1 case was a multi-family household. In neglect cases, 17 of the 30 neglect households were 2 parent households, while 7 were single parent, 5 were extended-family households and 1 was a multi-family household.

Thirty seven of the total 54 fatalities occurred in households where there were other siblings in the family including 17 of 24 abuse households and 20 of 30 neglect households. This reflects a decrease from the prior year where 44 of the 57 fatalities occurred in households where there were other siblings in the family.

---

Prepared by:  
Office of Data Management



Source:  
Department of Child Services



## Department of Child Services Child Abuse and Neglect Annual Fatality Report For State Fiscal Year 2005

Twenty (37%) of the total 54 child fatalities occurred in families with at least one prior child protective services substantiated investigation. This reflects a slight increase from SFY 2004 when 19 (33.3%) of the total 57 child fatalities occurred in families with a prior child protective services substantiated investigation.

Fatalities from both abuse and neglect with alcohol/drug involvement increased to 18 (33.3%) in SFY 2005 from 10 (18%) in SFY 2004. In SFY 2005, 6 of the 22 abuse fatalities and 12 of the 35 neglect fatalities involved alcohol/drug involvement. This compares to 10 out of the total 57 fatalities in SFY 2004.

The most common stress factors ranked in order of frequency for abuse cases were:

- (1) Domestic Violence, and Lack of Parenting Skills;
- (2) Family discord/marital problems;
- (3) Pregnancy/new child;
- (4) Drug dependency, and Heavy Child Care Responsibility;
- (5) Authoritarian Method/Discipline, and Insufficient Income

The most common stress factors ranked in order of frequency for neglect cases were:

- (1) Lack of Parenting Skills;
- (2) Drug dependency, and Family discord/marital problems;
- (3) Pregnancy/new child, and Insufficient Income;
- (4) Domestic Violence, and Heavy Child Care Responsibility;
- (5) Unstable Living Conditions

### Characteristics of Victims

As was true in the prior year, the majority of abuse and neglect victims for SFY 2005 were under one year of age. However, SFY 2005 reflected an increase in victims under one year of age. Overall, child victims under one year of age comprised 25 (46.3%) of the total 54 fatalities in SFY 2005 compared to SFY 2004 when child victims under one of age comprised 16 (28%) of the total 57 fatalities. Children within this age range accounted for 10 (41.7%) of the total 24 abuse cases for SFY 2005. This reflects an increase from SFY 2004 which reported 6 (27.3%) of the 22 abuse cases reported. Child victims under one year of age accounted for 15 (50%) of the total 30 neglect cases. This reflects an increase from SFY 2004 which reported 10 children within this age range, which accounted for 28.6% of the neglect cases.

As was true in the prior year, fatalities from both abuse and neglect occurred most often with White children (abuse 66.7% and neglect 73.3%) followed by African American children (abuse 16.7% and neglect 20%), American Indian/Alaskan Native (abuse 12.5% and 0 neglect) and Hispanic (abuse 4.2% and 0 neglect). SFY 2005 reported a total of 5 (9.26%) American Indian/Alaskan Native victims and 1 (1.8%) Hispanic victim included in the 54 total abuse and neglect cases while SFY 2004 reported a total of 1 (1.7%) American Indian/Alaskan Native neglect victim of the 57 total abuse and neglect cases.

For abuse, White victims comprised 16 of the 24 total abuse cases, African American victims comprised 4 of the 24 cases, American Indian or Alaskan Native comprised 3 of the 24 cases and Hispanic comprised 1 case of the total 24.

---

Prepared by:  
Office of Data Management



Source:  
Department of Child Services





## Department of Child Services Child Abuse and Neglect Annual Fatality Report For State Fiscal Year 2005

For neglect, White victims comprised 22 of the total 30 neglect cases, African American victims comprised 6 of these 30 cases and American Indian or Alaskan Native victims comprised two of the 30 cases.

As noted in previous years more boys died due to abuse than girls. However, this year they shared an equal number of neglect deaths with girls. Boys accounted for 13 (54.2%) of the 24 abuse fatalities and 15 (50%) of the 30 neglect fatalities.

### DCS Vision

In sum, the data indicates Indiana's most vulnerable citizens have commonalities of risk factors.

- Infants are more vulnerable than older children and natural parents are the most likely perpetrators in child fatalities.
- A significant number of children die as a result of unsafe sleeping environments.
- Less experienced and younger parents are more likely to perpetrate these acts against their children.
- Domestic violence is a stress factor in many abuse fatalities.
- Supervision for children is critical.
- Proper restraints are always needed in automobiles.
- The effects of drug and alcohol abuse on our children is evident, and almost half of child deaths are considered homicide.

The Vision for the Department of Child Services is children thrive in safe, caring, supportive families and communities. As a community and as a state, we must use the data from these tragic circumstances to recognize factors that contribute to child abuse and neglect that ultimately can result in a child's death. Partnerships between the Department of Child Services and community members are imperative to reducing the frequency of these fatalities, and providing proactive support for children and parents in need.

---

Prepared by:  
Office of Data Management



Source:  
Department of Child Services



# CHILD FATALITIES - ALL

## County of Occurance For State Fiscal Year 2005

County	SFY 05		
	ABUSE	NEGLECT	TOTAL
Allen	1	1	2
Clark	1	0	1
Elkhart	1	2	3
Fayette	0	1	1
Floyd	0	1	1
Greene	0	1	1
Hendricks	2	0	2
Henry	0	1	1
Huntington	1	0	1
Jasper	1	0	1
Jennings	1	0	1
Knox	0	1	1
Lake	4	0	4
Madison	0	2	2
Marion	2	8	10
Martin	2	0	2
Miami	0	1	1
Monroe	1	0	1
Morgan	1	0	1
Noble	0	1	1
Porter	0	1	1
Posey	0	1	1
Pulaski	0	1	1
Putnam	1	0	1
Randolph	0	1	1
St Joseph	0	2	2
Scott	1	0	1
Steuben	1	0	1
Tippecanoe	1	1	2
Vanderburgh	1	1	2
Wayne	0	1	1
Wells	0	1	1
White	1	0	1
<b>Statewide</b>	<b>24</b>	<b>30</b>	<b>54</b>

Prepared by:  
Office of Data Management  
Thursday, May 04, 2006



State of Indiana  
Department of Child Services  
402 West Washington Street, Room W392 / Indianapolis, IN 46204-2739

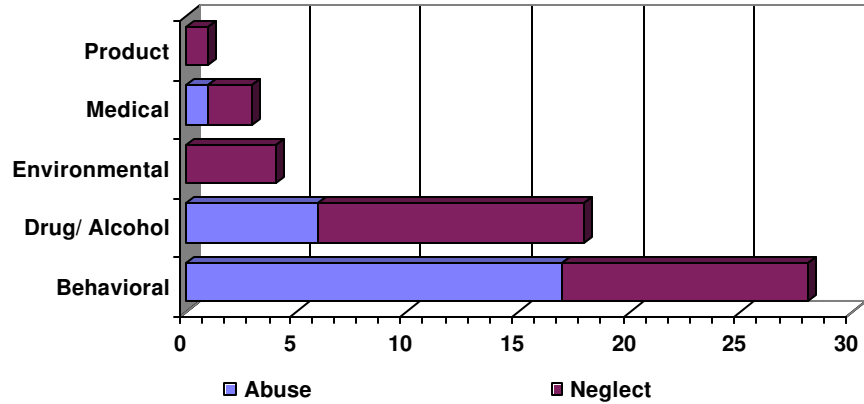
Source:  
Department of Child Services  
Child Fatality Review Reports



# CHILD FATALITIES - ALL

## Risk Factors For All Child Fatalities For State Fiscal Year 2005

### Breakdown of Primary Risk Factors Involved by Abuse or Neglect



### Primary Risk Factors Involved

SFY 05	
Behavioral	28
Drug/ Alcohol	18
Environmental	4
Medical	3
Product	1
<b>Total</b>	<b>54</b>

### Risk Factors Identified In Family Prior to Death

SFY 05	
Yes	30
No	24
<b>Total</b>	<b>54</b>

### Risk Factors Identified in Community Prior to Death

SFY 05	
Yes	34
No	20
<b>Total</b>	<b>54</b>

### Manner of Death Classification

Classification	Count
Homicide	26
Accident	16
Could not be determined	7
Pending Investigation	3
Suicide	1
None Provided	1
<b>Total</b>	<b>54</b>

Prepared by:  
Office of data Management  
Thursday, May 04, 2006



State of Indiana  
Department of Child Services

402 West Washington Street, Room W392 / Indianapolis, IN 46204-2739

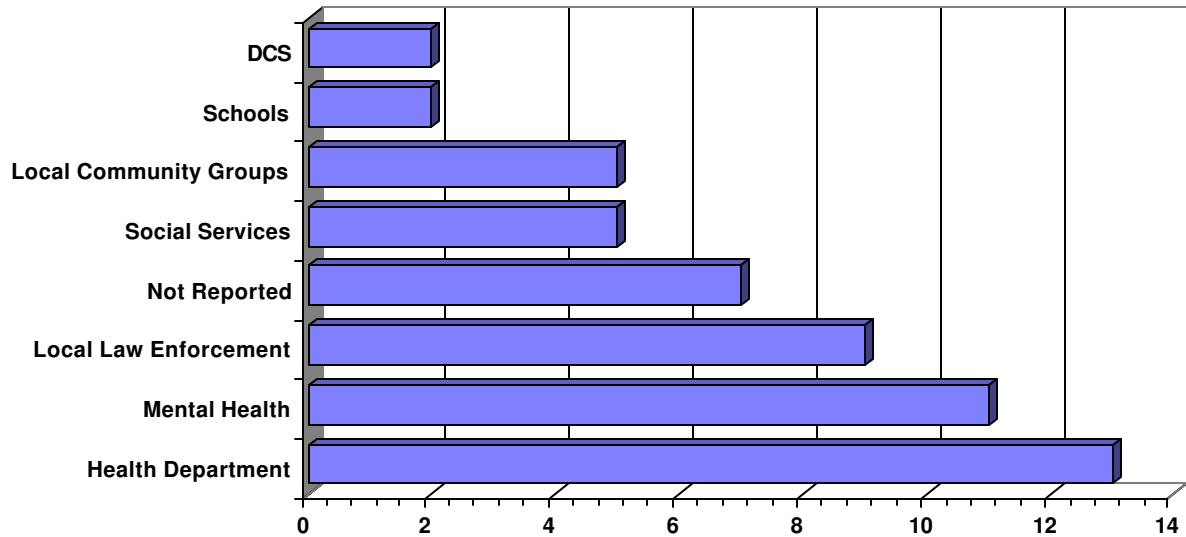
Source:  
Department of Child Services  
Child Fatality Review Reports



# CHILD FATALITIES - ALL

## Prevention Activities For All Child Fatalities For State Fiscal Year 2005

### Breakdown of Lead Organization for Prevention Activities



### Lead Organization for Prevention Activities

SFY 05	
Not Reported	7
Health Department	13
Social Services	5
Local Law Enforcement	9
Schools	2
Mental Health	11
Local Community Groups	5
DCS	2
<b>Total</b>	<b>54</b>

Prepared by:  
Office of data Management  
Thursday, May 04, 2006



State of Indiana  
Department of Child Services

402 West Washington Street, Room W392 / Indianapolis, IN 46204-2739

Source:  
Department of Child Services  
Child Fatality Review Reports



# CHILD FATALITIES - ALL

## Investigation Statistics For State Fiscal Year 2005

	SFY 05		
	ABUSE	NEGLECT	TOTAL
<b>Total Child Fatalities</b>	<b>24</b>	<b>30</b>	<b>54</b>
Coroner cases	24	28	52
% of Total	100.0%	93.3%	96.3%
Autopsies performed	24	27	51
% of Total	100.0%	90.0%	94.4%
Scene was investigated by Coroner	13	15	28
% of Total	54.2%	50.0%	51.9%
Scene was investigated by Law Enforcement	23	27	50
% of Total	95.8%	90.0%	92.6%
Scene was investigated by Fire Investigator	0	4	4
% of Total	0.0%	13.3%	7.4%
Emergency Medical Services was on scene	9	12	21
% of Total	37.5%	40.0%	38.9%
Scene was investigated by Other	6	4	10
% of Total	25.0%	13.3%	18.5%
Prior Substantiated CPS Investigations	10	10	20
% of Total	41.7%	33.3%	37.0%
1 Prior	4	6	10
2 Prior	1	1	2
3 Prior	0	1	1
4 Prior	0	0	0
5 Prior	0	0	0
6 Prior or More	1	0	1
Number of Times not Available	4	2	6

Prepared by:  
Office of Data Management  
Thursday, May 04, 2006



State of Indiana  
Department of Child Services  
402 West Washington Street, Room W392 / Indianapolis, IN 46204-2739

Source:  
Department of Child Services  
Child Fatality Review Reports



# CHILD FATALITIES - ALL

## Primary Cause of Death Statistics

For State Fiscal Year 2005

	SFY 05		
	ABUSE	NEGLECT	TOTAL
<b>Total Child Fatalities</b>	<b>24</b>	<b>30</b>	<b>54</b>
Asphyxiation, Positional	0	9	9
<i>% of deaths from abuse or neglect</i>	<i>0.0%</i>	<i>30.0%</i>	<i>16.7%</i>
Asphyxiation/ Suffocation/ Strangulation	4	1	5
<i>% of deaths from abuse or neglect</i>	<i>16.7%</i>	<i>3.3%</i>	<i>9.3%</i>
Drowning	0	8	8
<i>% of deaths from abuse or neglect</i>	<i>0.0%</i>	<i>26.7%</i>	<i>14.8%</i>
Drug-Related Conditions of Child	0	2	2
<i>% of deaths from abuse or neglect</i>	<i>0.0%</i>	<i>6.7%</i>	<i>3.7%</i>
Exposure	0	0	0
<i>% of deaths from abuse or neglect</i>	<i>0.0%</i>	<i>0.0%</i>	<i>0.0%</i>
Fire	0	1	1
<i>% of deaths from abuse or neglect</i>	<i>0.0%</i>	<i>3.3%</i>	<i>1.9%</i>
Gun-Related	2	0	2
<i>% of deaths from abuse or neglect</i>	<i>8.3%</i>	<i>0.0%</i>	<i>3.7%</i>
<i>Accidental</i>	<i>0</i>	<i>0</i>	<i>0</i>
<i>Homicide</i>	<i>0</i>	<i>0</i>	<i>0</i>
<i>Murder- Suicide</i>	<i>2</i>	<i>0</i>	<i>2</i>
<i>Murder-Attempted Suicide</i>	<i>0</i>	<i>0</i>	<i>0</i>
<i>Suicide</i>	<i>0</i>	<i>0</i>	<i>0</i>
<i>Undetermined</i>	<i>0</i>	<i>0</i>	<i>0</i>
Health Endangering/ Lack of Supervision	0	1	1
<i>% of deaths from abuse or neglect</i>	<i>0.0%</i>	<i>3.3%</i>	<i>1.9%</i>
Medical Neglect	0	1	1
<i>% of deaths from abuse or neglect</i>	<i>0.0%</i>	<i>3.3%</i>	<i>1.9%</i>
Physical Abuse/ Beating	13	0	13
<i>% of deaths from abuse or neglect</i>	<i>54.2%</i>	<i>0.0%</i>	<i>24.1%</i>
Poisoning	0	0	0
<i>% of deaths from abuse or neglect</i>	<i>0.0%</i>	<i>0.0%</i>	<i>0.0%</i>
Scalding/ Burns	1	1	2
<i>% of deaths from abuse or neglect</i>	<i>4.2%</i>	<i>3.3%</i>	<i>3.7%</i>
Sexual Assault	0	0	0
<i>% of deaths from abuse or neglect</i>	<i>0.0%</i>	<i>0.0%</i>	<i>0.0%</i>
Shaken Baby Syndrome	3	0	3
<i>% of deaths from abuse or neglect</i>	<i>12.5%</i>	<i>0.0%</i>	<i>5.6%</i>
Suicide	0	1	1
<i>% of deaths from abuse or neglect</i>	<i>0.0%</i>	<i>3.3%</i>	<i>1.9%</i>
Undetermined	0	1	1
<i>% of deaths from abuse or neglect</i>	<i>0.0%</i>	<i>3.3%</i>	<i>1.9%</i>
Unknown	0	0	0
<i>% of deaths from abuse or neglect</i>	<i>0.0%</i>	<i>0.0%</i>	<i>0.0%</i>
Vehicular	0	4	4
<i>% of deaths from abuse or neglect</i>	<i>0.0%</i>	<i>13.3%</i>	<i>7.4%</i>
Wounds/ Punctures/ Bites	1	0	1
<i>% of deaths from abuse or neglect</i>	<i>4.2%</i>	<i>0.0%</i>	<i>1.9%</i>

Prepared by:  
Office of Data Management  
Thursday, May 04, 2006



State of Indiana  
Department of Child Services  
402 West Washington Street, Room W392 / Indianapolis, IN 46204-2739

Source:  
Department of Child Services  
Child Fatality Review Reports



# CHILD FATALITIES - ABUSE

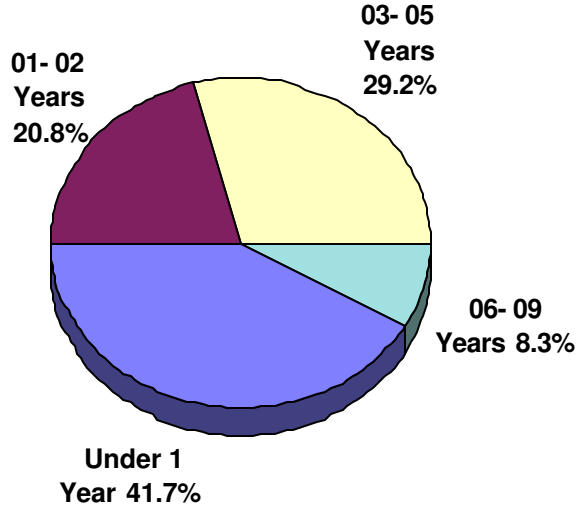
## Demographic Characteristics of the Child For State Fiscal Year 2005

During SFY 05 there were 24 fatalities due to abuse out of 54 fatalities.

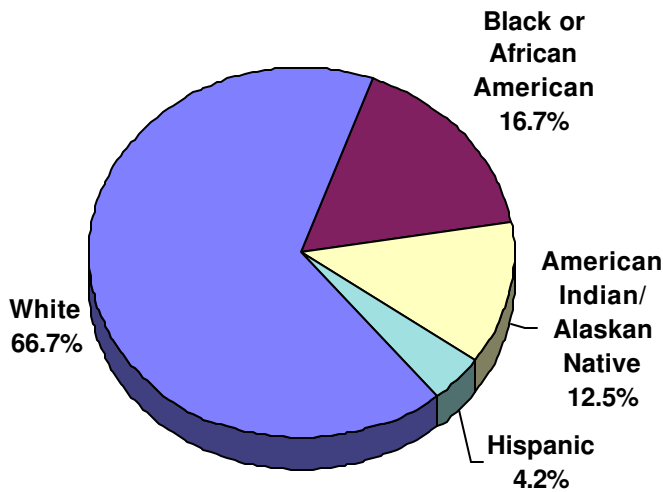
**Age of the Child**

SFY 05		
Under 1	10	41.7%
01	4	16.7%
02	1	4.2%
03	1	4.2%
04	4	16.7%
05	2	8.3%
06	0	0.0%
07	2	8.3%
08	0	0.0%
09	0	0.0%
10-12	0	0.0%
13-17	0	0.0%
Unreported	0	0.0%
<b>Total</b>	<b>24</b>	

**Percentage Breakdown by Age of the Child**



**Percentage Breakdown by Race of the Child**



**Race of the Child**

SFY 05		
White	16	66.7%
Black or African American	4	16.7%
American Indian/ Alaskan Native	3	12.5%
Hispanic	1	4.2%
<b>Total</b>	<b>24</b>	

**Sex of the Child**

SFY 05		
Female	11	45.8%
Male	13	54.2%
<b>Total</b>	<b>24</b>	

Prepared by:  
Office of Data Management  
Thursday, May 04, 2006



State of Indiana

Department of Child Services

402 West Washington Street, Room W392 / Indianapolis, IN 46204-2739

Source:  
Department of Child Services  
Child Fatality Review Reports



# CHILD FATALITIES - ABUSE STATISTICS

## Demographic Characteristics of the Case For State Fiscal Year 2005

### Source of Report

SFY 05	
Coroner	1
Hospital/ Clinic	9
Law Enforcement	10
Other	2
Public Social Agency	2
<b>Total</b>	<b>24</b>

### Type of Physical Abuse\*

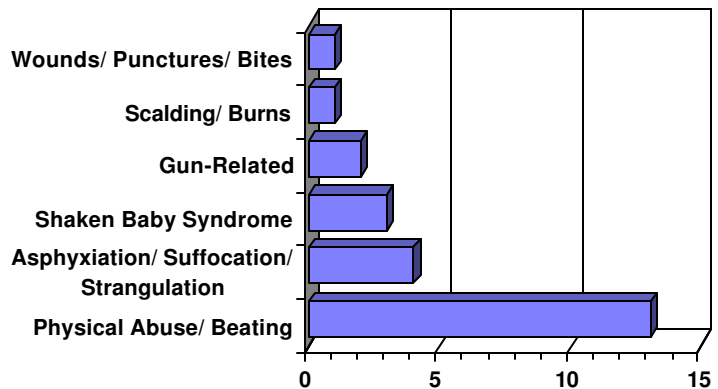
SFY 05	
Bruises, Cuts, Welts	7
Bone Fractures	1
Skull Fracture	11
Internal Injury	5
Wounds, Punctures, Bites	2
Burns, Scalds	2
Poisoning	0
Asphyxiation/ Suffocation	4
Shaking/ Dislocation/ Sprains	3
Drowning	0
Inappropriate Discipline	0
Gunshot Wounds	2
Shaken Baby Syndrome	5
Alcohol Abused Child	0
Drug Abused Child	0

*\*May list more than one item for each fatality*

### Breakdown by Primary Cause of Death

#### Primary Cause of Death

SFY 05	
Primary Cause of Death	Count
Physical Abuse/ Beating	13
Asphyxiation/ Suffocation/ Strangulation	4
Shaken Baby Syndrome	3
Gun-Related	2
Wounds/ Punctures/ Bites	1
Scalding/ Burns	1
<b>Total</b>	<b>24</b>







# CHILD FATALITIES - ABUSE STATISTICS

## Demographic Characteristics of the Household For State Fiscal Year 2005

### Marital Status of Parents

SFY 05	
Living Together	12
Married	4
Separated	3
Single	5
<b>Total</b>	<b>24</b>

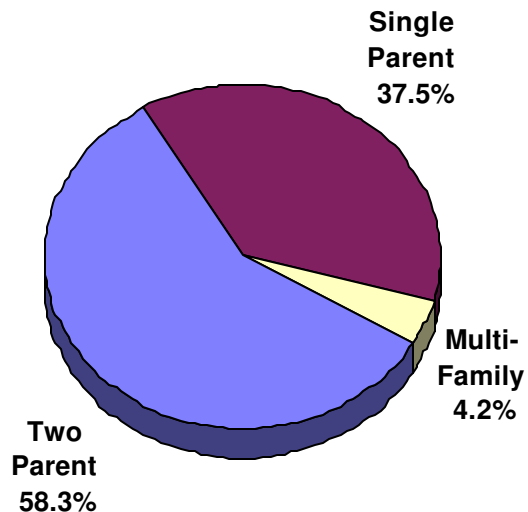
### Other Siblings in the Family

SFY 05	
Yes	17
No	7
<b>Total</b>	<b>24</b>

### Type of Household Where Incident Occurred

SFY 05	
Multi-Family	1
Single Parent	9
Two Parent	14
<b>Total</b>	<b>24</b>

### Percentage Breakdown of Type of Household Where Incident Occurred



### Male Caregiver's Primary Source of Income

SFY 05	
Unknown	11
Unemployed	3
Labor/Skilled	2
Labor/ Unskilled	5
Sales	2
Other	1
<b>Total</b>	<b>24</b>

### Female Caregiver's Primary Source of Income

SFY 05	
Unknown	6
Unemployed	2
Labor/Skilled	2
Labor/ Unskilled	5
Service Work	1
Professional/ Technical	1
TANF	6
Social Security/ Pension	1
<b>Total</b>	<b>24</b>

### Male Caregiver's Education

SFY 05	
High School Graduate	5
Partial College	1
Technical/Vocational	1
Unknown	17
<b>Total</b>	<b>24</b>

### Female Caregiver's Education

SFY 05	
Partial Elementary	1
High School Graduate	8
Partial College	1
Special Education	1
Unknown	8
Partial High School	5
<b>Total</b>	<b>24</b>

Prepared by:  
Office of Data Management  
Thursday, May 04, 2006



State of Indiana

Department of Child Services

402 West Washington Street, Room W392 / Indianapolis, IN 46204-2739

Source:  
Department of Child Services  
Child Fatality Review Reports



# CHILD FATALITIES - ABUSE

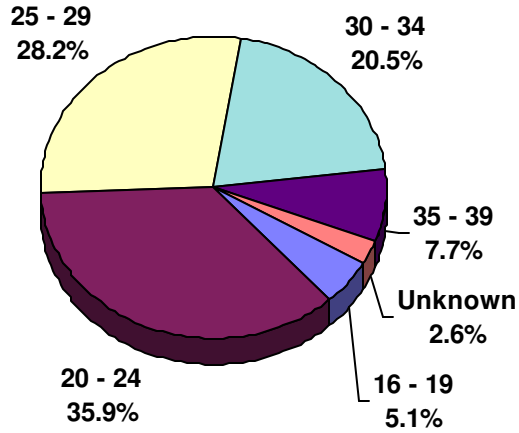
## Demographic Characteristics of the Case For State Fiscal Year 2005

### Percentage Breakdown by Age of Perpetrator\*

#### Age of Perpetrator\*

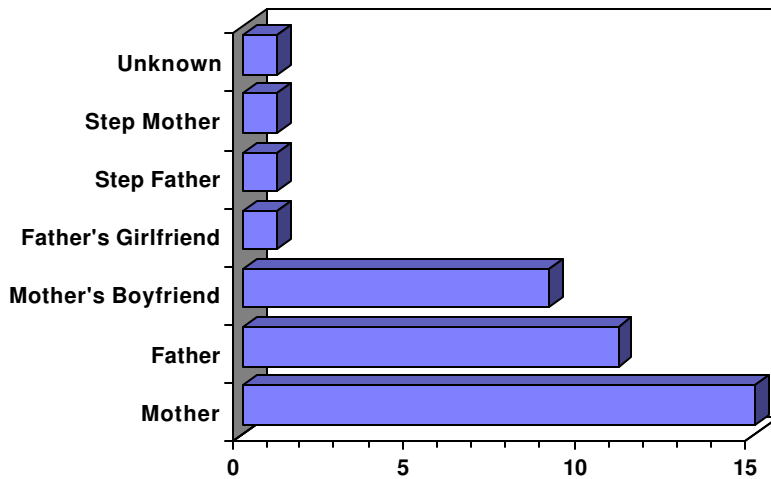
SFY 05	
16 - 19	2
20 - 24	14
25 - 29	11
30 - 34	8
35 - 39	3
Unknown	1
<b>Total</b>	<b>39</b>

*\*May list more than one perpetrator for each fatality*



*\*May list more than one perpetrator for each fatality*

### Breakdown by Relationship of Perpetrator\*



### Relationship of Perpetrator to Child\*

SFY 05	
Mother	15
Father	11
Mother's Boyfriend	9
Unknown	1
Father's Girlfriend	1
Step Father	1
Step Mother	1
<b>Total</b>	<b>39</b>

*\*May list more than one perpetrator for each fatality*

### Race of Perpetrator\*

SFY 05	
White	26
Black or African American	8
American Indian/ Alaskan Native	3
Hispanic	1
Unknown	1
<b>Total</b>	<b>39</b>

*\*May list more than one perpetrator for each fatality*

### Sex of Perpetrator\*

SFY 05	
Female	17
Male	21
Unknown	1
<b>Total</b>	<b>39</b>

*\*May list more than one perpetrator for each fatality*

Prepared by:  
Office of Data Management  
Thursday, May 04, 2006



State of Indiana

Department of Child Services

402 West Washington Street, Room W392 / Indianapolis, IN 46204-2739

Source:  
Department of Child Services  
Child Fatality Review Reports



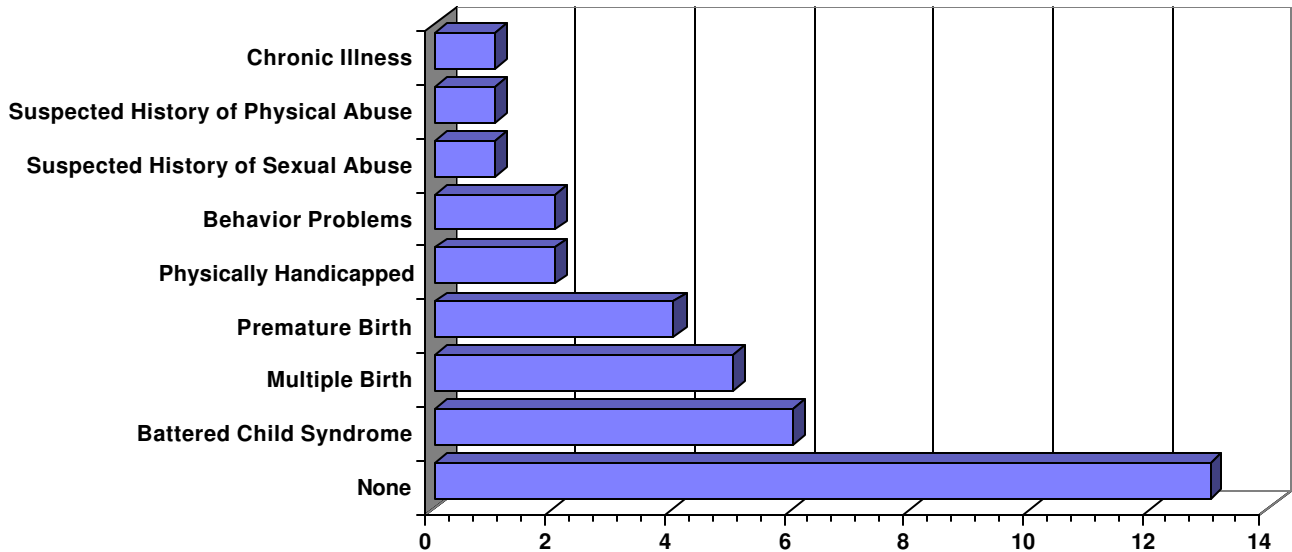
# CHILD FATALITIES - ABUSE

## Victim Stress Factors For State Fiscal Year 2005

### Victim's Stress Factors\*

SFY 05	
ADD/ ADHD	0
Battered Child Syndrome	6
Behavior Problems	2
Chronic Illness	1
Drug Addiction/ Substance Abuse	0
Emotional Disturbance	0
Failure to Thrive	0
Fetal Alcohol Syndrome	0
Involved Juvenile Court	0
Mental Retardation	0
Multiple Birth	5
None	13
Physically Handicapped	2
Premature Birth	4
School Related Problem	0
Suspected History of Neglect	0
Suspected History of Physical Abuse	1
Suspected History of Sexual Abuse	1
<b>Total</b>	<b>35</b>

### Breakdown of Victim's Stress Factors\*



*\*All statistics are listed by child. May list more than one item for each child.*

Prepared by:  
Office of Data Management  
Thursday, May 04, 2006



State of Indiana

Department of Child Services

402 West Washington Street, Room W392 / Indianapolis, IN 46204-2739

Source:  
Department of Child Services  
Child Fatality Review Reports



# CHILD FATALITIES - ABUSE

## Primary Caregiver's Stress Factors For State Fiscal Year 2005

### Female Caregiver's Stress Factors\*

SFY 05	
Abused/ Neglected as Children	2
Alcoholism	0
Authoritarian Method/Discip.	2
Caring for Special Needs Child	2
Domestic Violence	12
Drug Dependency	4
Emotionally Disturbed	1
Family Discord/ Marital Problems	8
Heavy Child Care Reasons	6
Inadequate Housing	0
Insufficient Income	4
Job Related Problems	0
Lack Parenting Skills	12
Language Problem	0
Learning Disabled	1
Mental Health Problems	2
None	0
Other addictive condition	0
Parental Mental Retardation	0
Physical Health Problems	0
Physically Disabled	0
Poor Money Management	0
Pregnancy/ New child	9
Recent Relocation	2
Social Isolation	1
Spouse Abuse/ Family Violence	1
Unknown	0
Unstable Living Conditions	2
Visual/ Hearing Problems	0
<b>Total</b>	<b>71</b>

### Male Caregiver's Stress Factors\*

SFY 05	
Abused/ Neglected as Children	0
Alcoholism	2
Authoritarian Method/Discip.	4
Caring for Special Needs Child	1
Domestic Violence	12
Drug Dependency	5
Emotionally Disturbed	4
Family Discord/ Marital Problems	8
Heavy Child Care Reasons	3
Inadequate Housing	0
Insufficient Income	2
Job Related Problems	2
Lack Parenting Skills	14
Language Problem	1
Learning Disabled	0
Mental Health Problems	3
None	0
Other addictive condition	0
Parental Mental Retardation	0
Physical Health Problems	0
Physically Disabled	0
Poor Money Management	0
Pregnancy/ New child	4
Recent Relocation	0
Social Isolation	0
Spouse Abuse/ Family Violence	1
Unknown	2
Unstable Living Conditions	2
Visual/ Hearing Problems	0
<b>Total</b>	<b>70</b>

**\*All statistics are listed by child, may count one parent twice if two children died. May list more than one item for each parent. Stress factors may be reported for a primary caretaker if the biological parent is not living in the home.**

Prepared by:  
Office of Data Management  
Thursday, May 04, 2006



State of Indiana

Department of Child Services

402 West Washington Street, Room W392 / Indianapolis, IN 46204-2739

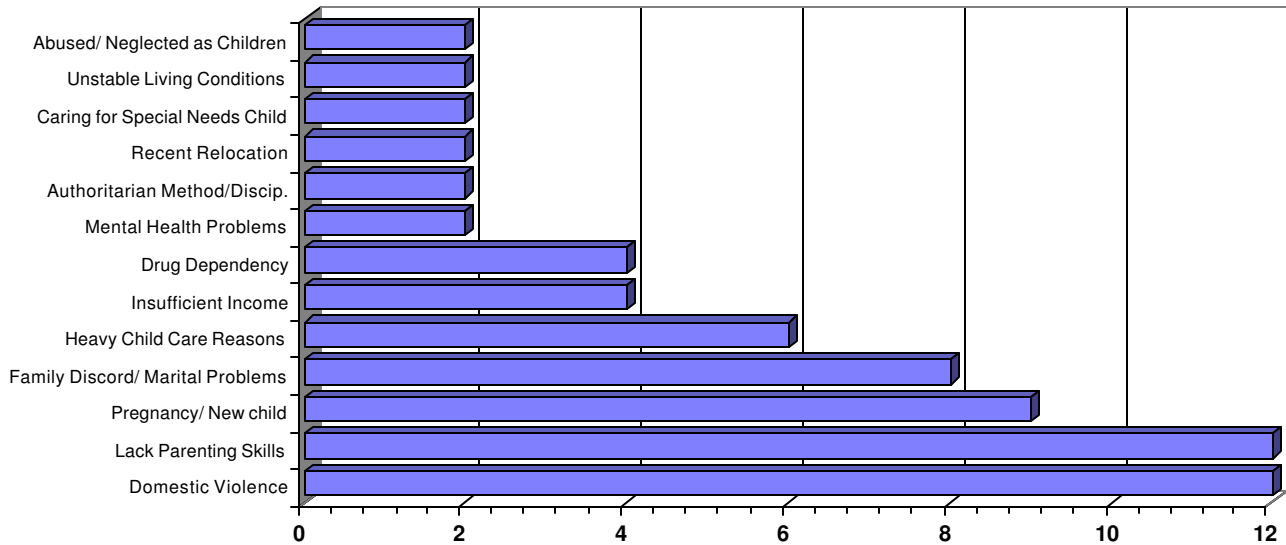
Source:  
Department of Child Services  
Child Fatality Review Reports



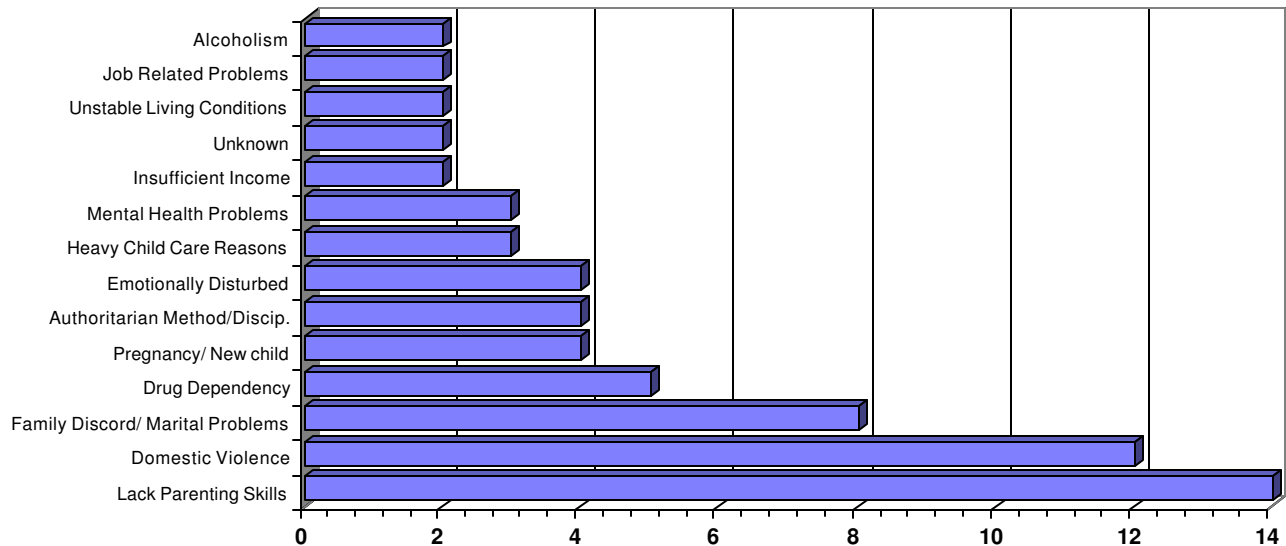
# CHILD FACILITIES - ABUSE STATISTICS

## Primary Caregiver's Stress Factors For State Fiscal Year 2005

**Breakdown of Top 10 Female Primary Caregiver's Stress Factors\***



**Breakdown of Top 10 Male Primary Caregiver's Stress Factors\***



***\*All statistics are listed by child, may count one parent twice if two children died. May list more than one item for each parent. Stress factors may be reported for a primary caretaker if the biological parent is not living in the home.***

Prepared by:  
Office of Data Management  
Thursday, May 04, 2006



State of Indiana  
Department of Child Services  
402 West Washington Street, Room W392 / Indianapolis, IN 46204-2739

Source:  
Department of Child Services  
Child Fatality Review Reports



# CHILD FATALITIES - NEGLECT

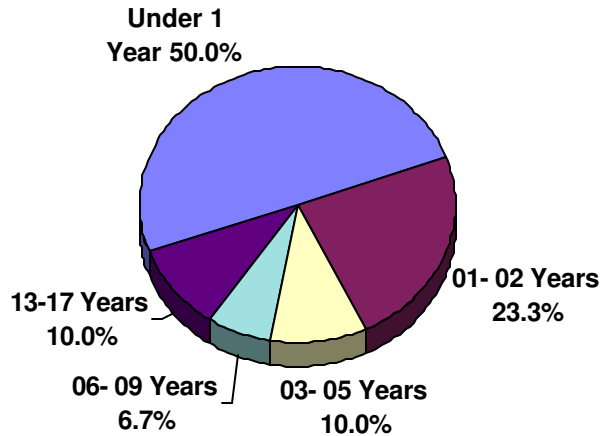
## Demographic Characteristic of the Child For State Fiscal Year 2005

During SFY 05 there were 30 fatalities due to abuse out of 54 fatalities.

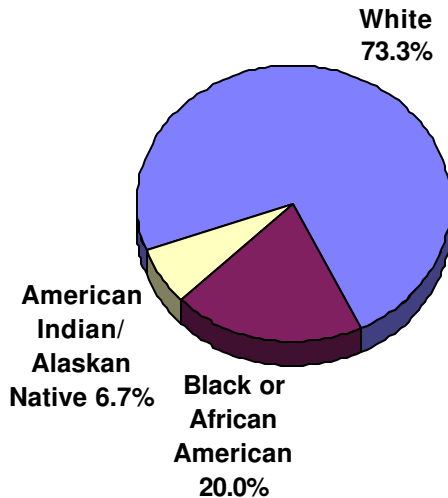
**Age of the Child**

SFY 05		
Under 1	15	50.0%
01	3	10.0%
02	4	13.3%
03	3	10.0%
04	0	0.0%
05	0	0.0%
06	0	0.0%
07	1	3.3%
08	0	0.0%
09	1	3.3%
10-12	0	0.0%
13-17	3	10.0%
Unreported	0	0.0%
<b>Total</b>	<b>30</b>	

**Percentage Breakdown by Age of the Child**



**Percentage Breakdown by Race of the Child**



**Race of the Child**

SFY 05		
American Indian/ Alaskan Native	2	6.7%
Black or African American	6	20.0%
White	22	73.3%
<b>Total</b>	<b>30</b>	

**Sex of the Child**

SFY 05		
Female	15	50.0%
Male	15	50.0%
<b>Total</b>	<b>30</b>	

Prepared by:  
Office of Data Management  
Thursday, May 04, 2006



State of Indiana

Department of Child Services

402 West Washington Street, Room W392 / Indianapolis, IN 46204-2739

Source:  
Department of Child Services  
Child Fatality Review Reports



# CHILD FATALITIES - NEGLECT STATISTICS

## Demographic Characteristic of the Case For State Fiscal Year 2005

### Source of Report

SFY 05	
Anonymous	2
Coroner	6
Hospital/ Clinic	6
Law Enforcement	12
Other	2
Public Social Agency	1
Relative	1
<b>Total</b>	<b>30</b>

### Type of Neglect\*

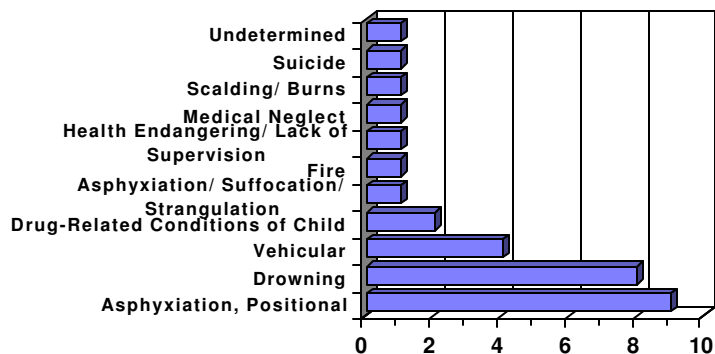
SFY 05	
Lack of Supervision	13
Failure to Thrive	0
Malnutrition	0
Medical Neglect	2
Educational Neglect	0
Abandonment	2
Close Confinement	0
Lock in/ out	0
Lack Food, Shelter, Clothing	1
Environment Life/health Danger	19
Poor Hygiene	1
Drug Abuse	1
Fetal Alcohol Syndrome	0

*\*May list more than one item for each fatality*

### Breakdown by Primary Cause of Death

#### Primary Cause of Death

SFY 05	
Primary Cause of Death	Count
Asphyxiation, Positional	9
Drowning	8
Vehicular	4
Drug-Related Conditions of Child	2
Undetermined	1
Suicide	1
Scalding/ Burns	1
Medical Neglect	1
Health Endangering/ Lack of Supervision	1
Fire	1
Asphyxiation/ Suffocation/ Strangulation	1
<b>Total</b>	<b>30</b>





# CHILD FATALITIES - NEGLECT STATISTICS

## Demographic Characteristic of the Household For State Fiscal Year 2005

### Marital Status of Parents

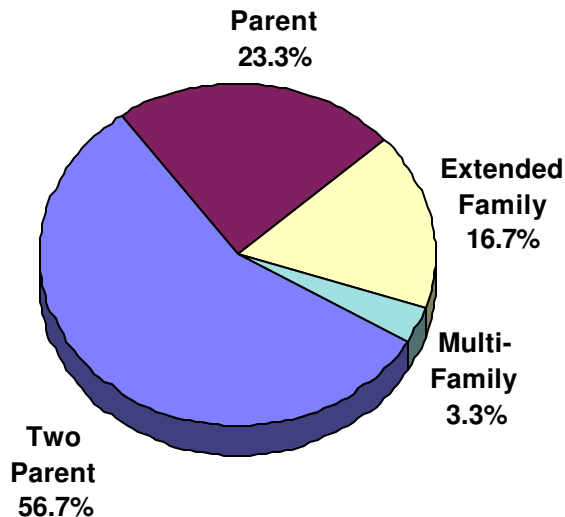
SFY 05	
Living Together	10
Married	10
Separated	1
Single	9
<b>Total</b>	<b>30</b>

### Other Siblings in the Family

SFY 05	
Yes	20
No	10
<b>Total</b>	<b>30</b>

### Type of Household Where Incident Occurred

SFY 05	
Extended Family	5
Multi-Family	1
Single Parent	7
Two Parent	17
<b>Total</b>	<b>30</b>



### Male Caregiver's Primary Source of Income

SFY 05	
Unknown	8
Unemployed	8
Labor/Skilled	1
Labor/ Unskilled	5
Service Work	3
Military	2
Professional/ Technical	1
TANF	1
Other	1
<b>Total</b>	<b>30</b>

### Female Caregiver's Primary Source of Income

SFY 05	
Unknown	2
Unemployed	7
Labor/Skilled	3
Labor/ Unskilled	5
Service Work	3
Military	2
Professional/ Technical	1
TANF	4
Other Public Assistance	1
Other	2
<b>Total</b>	<b>30</b>

### Male Caregiver's Education

SFY 05	
High School Graduate	4
Partial College	1
Unknown	20
Partial High School	5
<b>Total</b>	<b>30</b>

### Female Caregiver's Education

SFY 05	
High School Graduate	6
Unknown	16
Partial High School	8
<b>Total</b>	<b>30</b>

Prepared by:  
Office of Data Management  
Thursday, May 04, 2006



State of Indiana

Department of Child Services

402 West Washington Street, Room W392 / Indianapolis, IN 46204-2739

Source:  
Department of Child Services  
Child Fatality Review Reports



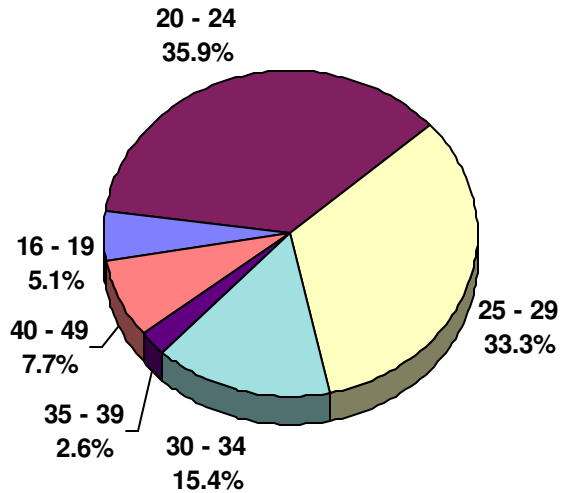


# CHILD FATALITIES - NEGLECT

## Demographic Characteristic of the Perpetrator For State Fiscal Year 2005

Percentage Breakdown by Age of Perpetrator\*

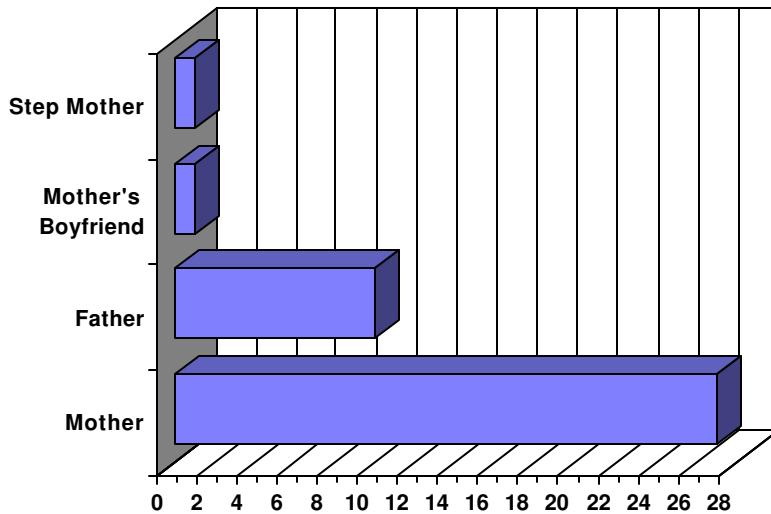
Age of Perpetrator*	
SFY 05	
16 - 19	2
20 - 24	14
25 - 29	13
30 - 34	6
35 - 39	1
40 - 49	3
<b>Total</b>	<b>39</b>



*\*May list more than one perpetrator for each fatality*

*\*May list more than one perpetrator for each fatality*

Breakdown by Relationship of Perpetrator\*



Relationship of Perpetrator to Child\*

SFY 05	
Mother	27
Father	10
Step Mother	1
Mother's Boyfriend	1
<b>Total</b>	<b>39</b>

*\*May list more than one perpetrator for each fatality*

*\*May list more than one perpetrator for each fatality*

Race of Perpetrator\*

SFY 05	
White	31
Black or African American	5
American Indian/ Alaskan Native	3
<b>Total</b>	<b>39</b>

*\*May list more than one perpetrator for each fatality*

Sex of Perpetrator\*

SFY 05	
Female	28
Male	11
<b>Total</b>	<b>39</b>

*\*May list more than one perpetrator for each fatality*





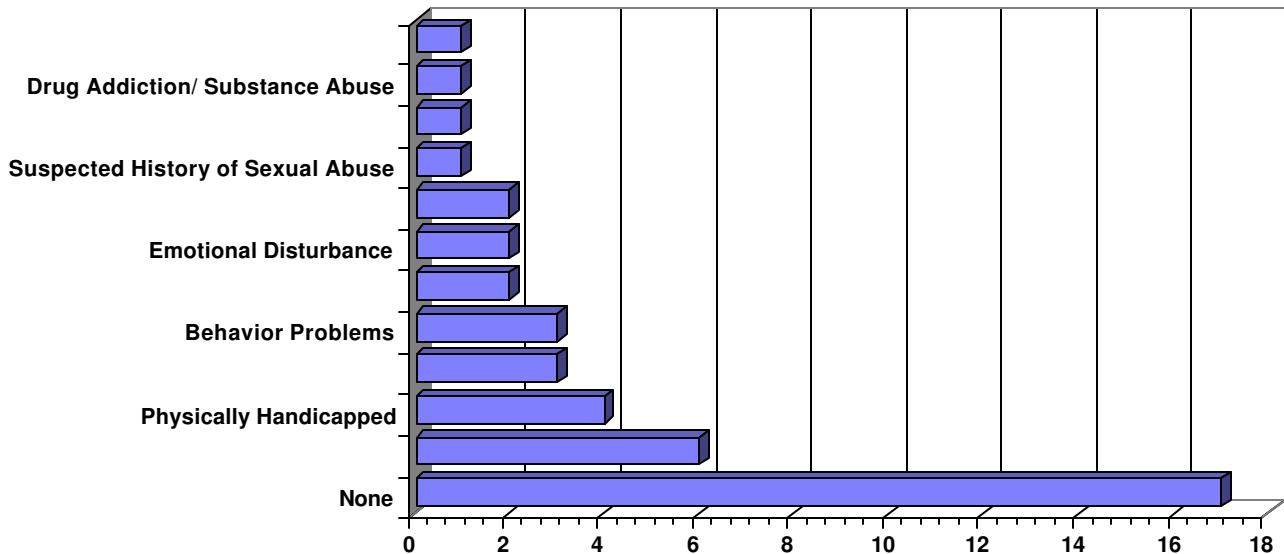
# CHILD FATALITIES - NEGLECT

## Victim Stress Factors For State Fiscal Year 2005

Victim's Stress Factors\*

SFY 05	
ADD/ ADHD	0
Battered Child Syndrome	0
Behavior Problems	3
Chronic Illness	2
Drug Addiction/ Substance Abuse	1
Emotional Disturbance	2
Failure to Thrive	1
Fetal Alcohol Syndrome	0
Involved Juvenile Court	2
Mental Retardation	0
Multiple Birth	3
None	17
Physically Handicapped	4
Premature Birth	6
School Related Problem	1
Suspected History of Neglect	0
Suspected History of Physical Abuse	0
Suspected History of Sexual Abuse	1
<b>Total</b>	<b>43</b>

*\*All statistics are listed by child. May list more than one item for each individual.*





# CHILD FATALITIES - NEGLECT

## Primary Caregiver's Stress Factors For State Fiscal Year 2005

### Male Caregiver's Stress Factors\*

2005	
Abused/ Neglected as Children	0
Alcoholism	2
Authoritarian Method/Discip.	0
Caring for Special Needs Child	1
Domestic Violence	3
Drug Dependency	6
Emotionally Disturbed	1
Family Discord/ Marital Problems	5
Heavy Child Care Reasons	2
Inadequate Housing	1
Insufficient Income	4
Job Related Problems	4
Lack Parenting Skills	8
Language Problem	1
Learning Disabled	1
Mental Health Problems	2
None	4
Other addictive condition	0
Parental Mental Retardation	0
Physical Health Problems	0
Physically Disabled	0
Poor Money Management	0
Pregnancy/ New child	2
Recent Relocation	3
Social Isolation	0
Spouse Abuse/ Family Violence	0
Unknown	11
Unstable Living Conditions	2
Visual/ Hearing Problems	0
<b>Total</b>	<b>63</b>

### Female Caregiver's Stress Factors\*

2005	
Abused/ Neglected as Children	3
Alcoholism	2
Authoritarian Method/Discip.	0
Caring for Special Needs Child	4
Domestic Violence	5
Drug Dependency	6
Emotionally Disturbed	1
Family Discord/ Marital Problems	7
Heavy Child Care Reasons	6
Inadequate Housing	0
Insufficient Income	5
Job Related Problems	0
Lack Parenting Skills	13
Language Problem	2
Learning Disabled	0
Mental Health Problems	0
None	7
Other addictive condition	0
Parental Mental Retardation	0
Physical Health Problems	0
Physically Disabled	0
Poor Money Management	0
Pregnancy/ New child	7
Recent Relocation	2
Social Isolation	0
Spouse Abuse/ Family Violence	0
Unknown	0
Unstable Living Conditions	5
Visual/ Hearing Problems	0
<b>Total</b>	<b>75</b>

***\*All statistics are listed by child, may count one parent twice if two children died. May list more than one item for each parent. Stress factors may be reported for a primary caretaker if the biological parent is not living in the home.***

Prepared by:  
Office of Data Management  
Thursday, May 04, 2006



State of Indiana

Department of Child Services

402 West Washington Street, Room W392 / Indianapolis, IN 46204-2739

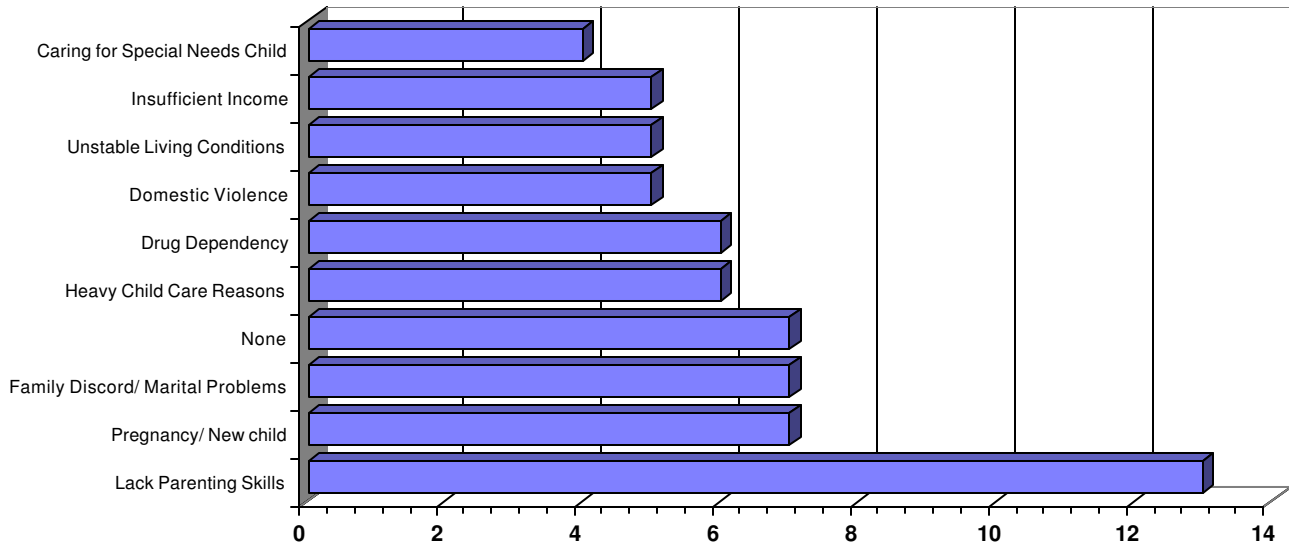
Source:  
Department of Child Services  
Child Fatality Review Reports



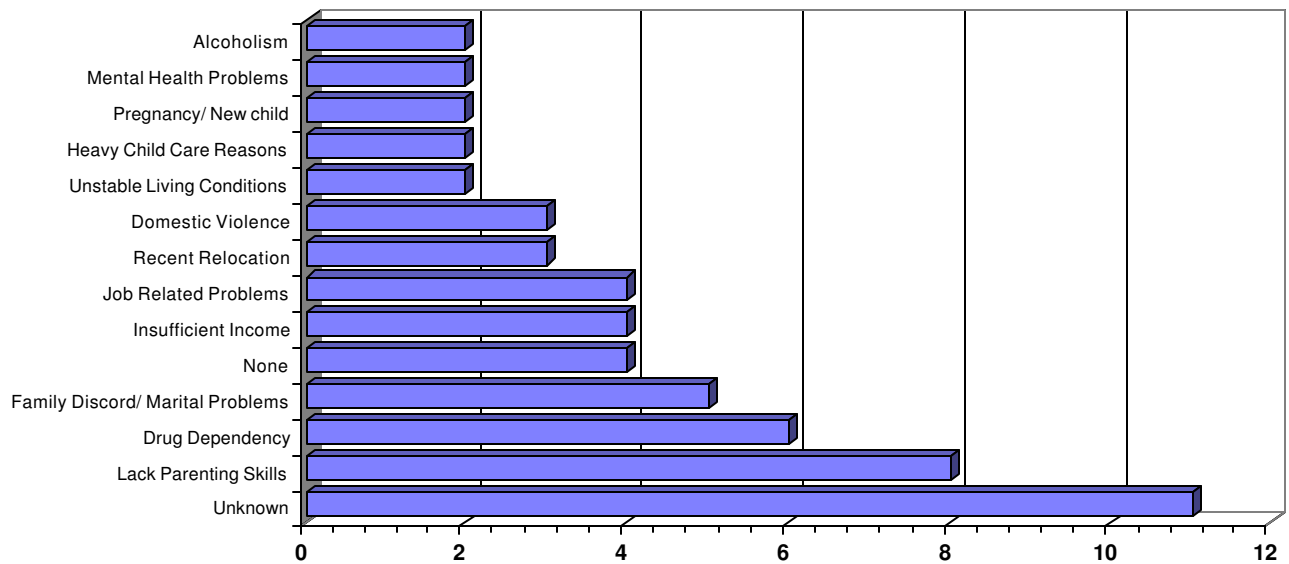
# CHILD FATALITIES - NEGLECT STATISTICS

## Primary Caregiver's Stress Factors For State Fiscal Year 2005

**Breakdown of Top 10 Female Primary Caregiver's Stress Factors\***



**Breakdown of Top 10 Male Primary Caregiver's Stress Factors\***



***\*All statistics are listed by child, may count one parent twice if two children died. May list more than one item for each parent. Stress factors may be reported for a primary caretaker if the biological parent is not living in the home.***

Prepared by:  
Office of Data Management  
Thursday, May 04, 2006



State of Indiana  
Department of Child Services  
402 West Washington Street, Room W392 / Indianapolis, IN 46204-2739

Source:  
Department of Child Services  
Child Fatality Review Reports



# CHILD DEATHS AT THE HANDS OF BABYSITTER OR ALTERNATIVE CAREGIVER

## Fatality Statistics For State Fiscal Year 2005

During state fiscal year 2005, DCS, by law, was not required to investigate deaths of children that occurred at the hands of babysitters or alternative caregivers (those that are not identified as a parent, guardian or custodian). However, we have chosen to place the following information as an addendum to the fatality report in order to be consistent with the reports in past years. This addendum documents some of the data statistics regarding allegations of abuse or neglect while children were in child care or alternative care. It further demonstrates the need for continued vigilance and training of everyone responsible for the care of our most vulnerable children.

### All Deaths Statistics

#### County of Occurance

County	SFY 05		
	ABUSE	NEGLECT	TOTAL
Howard	1	0	1
Marion	0	1	1
Owen	1	0	1
<b>Statewide</b>	<b>2</b>	<b>1</b>	<b>3</b>

#### Primary Risk Factors Involved

SFY 05	
Behavioral	2
Environmental	1
<b>Total</b>	<b>3</b>

#### Where Risk Factors Identified In Family Prior to Death?

SFY 05	
No	3
<b>Total</b>	<b>3</b>

#### Where Risk Factors Identified in Community Prior to Death?

SFY 05	
No	3
<b>Total</b>	<b>3</b>

#### Manner of Death Classification

Classification	Count
Homicide	2
Accident	1
<b>Total</b>	<b>3</b>





# CHILD DEATHS AT THE HANDS OF BABYSITTER OR ALTERNATIVE CAREGIVER

## Fatality Statistics For State Fiscal Year 2005

### Abuse Statistics

#### Primary Cause of Death

SFY 05	
Primary Cause of Death	Count
Physical Abuse/ Beating	2
<b>Total</b>	<b>2</b>

#### Age of the Child

SFY 05	
Under 1	2 00.0%
<b>Total</b>	<b>2</b>

#### Race of the Child

SFY 05	
White	2 100.0%
<b>Total</b>	<b>2</b>

#### Age of Perpetrator\*

SFY 05	
25 - 29	3
<b>Total</b>	<b>3</b>

#### Sex of the Child

SFY 05	
Female	1 50.0%
Male	1 50.0%
<b>Total</b>	<b>2</b>

*\*May list more than one perpetrator for each fatality*

### Neglect Statistics

#### Primary Cause of Death

SFY 05	
Primary Cause of Death	Count
Drowning	1
<b>Total</b>	<b>1</b>

#### Age of the Child

SFY 05	
13-17	1 100.0%
<b>Total</b>	<b>1</b>

#### Race of the Child

SFY 05	
Black or African American	1 100.0%
<b>Total</b>	<b>1</b>

#### Age of Perpetrator

SFY 05	
50 +	1
<b>Total</b>	<b>1</b>

#### Sex of the Child

SFY 05	
Male	1 100.0%
<b>Total</b>	<b>1</b>

