

Child Abuse and Neglect SFY 2004 Annual Fatality Report

This report provides a demographic breakdown of the child fatality cases where the child's date of death occurred in Indiana for State Fiscal Year (SFY) 2004 which is July 1, 2003 to June 30, 2004. The report is divided into four sections. The first section has a brief overview of the fatalities and highlights changes or trends from the previous year. The second section contains the demographic data on the child fatality cases which were due to physical or sexual abuse. The third section contains the demographic data on the child fatality cases which were due to neglect. The final section contains the summary data from all child fatalities for SFY 2004.

Overview

There were 57 abuse and neglect fatalities substantiated in SFY 2004. This reflects an increase of 6 deaths (12%) from SFY 2003 which reported 51 substantiated fatalities. Of the 57 fatalities, 22 (39%) were due to abuse and 35 (61%) were due to neglect. While this reflects an overall increase in fatalities from SFY 2003, the fatalities attributed to abuse decreased and to neglect increased, going from 34 abuse in SFY 2003 to 22 in SFY 2004 and from 17 neglect in SFY 2003 to 35 in SFY 2004.

Overall the primary cause of all substantiated abuse and neglect deaths was attributed to physical abuse/beatings for 12 (21.1%) of the total 57 fatalities substantiated in SFY 2004. Vehicular deaths was the second leading cause of death with 11 (19.3%), followed by 6 (10.5%) fire, and 5 (8.8%) drowning and 5 (8.8%) poisoning. There were 4 (7%) gun-related and 4 (7%) medical neglect deaths. The remaining deaths were caused by 2 (3.5%) asphyxiation, 2 (3.5%) positional asphyxiation, 2 (3.5%) Shaken Baby Syndrome, 1 (1.8%) drug related, 1 (1.8%) scalding and 1 (1.8%) sexual assault. There was 1 undetermined cause of death.

Shaken Baby Syndrome deaths decreased from last year. In SFY 2003, Shaken Baby Syndrome was the second leading cause of all fatalities accounting for 8 (16%) of the total 51 fatalities. In SFY 2004, Shaken Baby accounted for 2 (3.5%) of the total 57 fatalities, reflecting a decrease of 6 (12%) from the previous year.

Unfortunately vehicular deaths in SFY 2004 reflected an increase of 8 from the previous year. SFY 2003 reported 3 (6%) vehicular deaths of the 51 total fatalities compared to SFY 2004 which reports vehicular deaths as the second leading cause of all fatalities accounting for 11 (19.3%) of the 57 total fatalities. Of the 11 vehicular deaths, 2 involved vehicles hitting a child, 2 involved All Terrain Vehicles operated by children under the age of 16, 1 involved a child riding on farm machinery and 6 involved car/truck collisions. Of the 6 vehicle accidents involved in collisions, restraints were present and used correctly in 2 (33%), present and not used in 3 (50%), and used incorrectly in 1 (17%) of the fatalities.

Child Abuse and Neglect SFY 2004 Annual Fatality Report

SFY 2004 reported 6 fire deaths compared to 2 reported in SFY 2003. Of the 6 reported this year, 3 fatalities were the result of fires starting due to alternate forms of lighting such as candles, or alternate forms of heating (space heater) being used because utilities had been shut off.

There were 22 abuse fatalities.

- The primary cause of abuse deaths was attributed to Physical Abuse/Beating accounting for 12 (5.45%) of the 22 abuse deaths.
- The second leading causes of abuse deaths were equally divided between 2 (9.1%) gun-related, 2 (9.1%) poisoning and 2 (9.1%) Shaken Baby Syndrome.
- The remaining 4 abuse deaths were attributed to 1 (4.5%) asphyxiation, 1 (4.5%) drowning, 1 (4.5%) scalding and 1 (4.5%) sexual assault.

There were 35 neglect fatalities.

- The primary cause of neglect deaths was vehicular for 11 (31.4%) of the 35 neglect deaths.
- Fire was the second leading cause of neglect deaths accounting for 6 (17.1%) of deaths, followed by 4 (11.4%) drowning and 4 (11.4%) medical neglect and 3 (8.6%) poisoning.
- The remaining 7 neglect deaths were attributed to 2 (5.7%) gun-related, 2 (5.7%) positional asphyxiation, 1 (2.9%) asphyxiation, 1 drug related and 1 undetermined.

As was true in the previous year, the majority of abuse and neglect perpetrators for SFY 2004 were White. There may be more than one perpetrator listed for each fatality.

- For abuse, White perpetrators comprised 25 of the 31 total abuse perpetrators, Black perpetrators comprised 4 of the 31, and 2 perpetrators were an unknown race.
- For neglect, White perpetrators comprised 46 of the 51 total neglect perpetrators, Black perpetrators comprised 4 of the 51, and 1 perpetrator was American Indian/Eskimo.

As was true in the previous year, the majority of abuse and neglect victims for SFY 2004 were White.

- For abuse, White victims comprised 17 (77%) of 22, and Black victims comprised 5 (23%) of 22.
- For neglect, White victims comprised 31 (89%) of 35, Black victims comprised 3 (8.5%) and 1 (2.5%) victim was American Indian/Eskimo.

Characteristics of Victims

- There were 57 total fatalities from both abuse and neglect substantiated in SFY 2004.

Child Abuse and Neglect SFY 2004 Annual Fatality Report

- Of the 57 fatalities 22 (39%) were due to abuse and 35 (61%) were due to neglect.
- As was true in past years, fatalities from both abuse and neglect occurred most often in young children. (Abuse: 27% under one year of age, 73% five years and under; Neglect: 28.6% under one year of age, 48.6% five years and under).
- As noted in previous years more boys died due to abuse and neglect than girls. Boys accounted for 13 (59.1%) of the 22 abuse fatalities and 18 (51.4%) of the 35 neglect fatalities.
- As was true in the prior year, fatalities from both abuse and neglect occurred most often with White children (abuse 77.3% and neglect 88.6%) followed by Black children (abuse 22.7% and neglect 8.6%) and American Indian/Eskimo (0 abuse and 2.9% neglect).
- For abuse fatalities, the most common causes of death by occurrence were: Physical Abuse/Beating 54.5%, Shaken Baby Syndrome 9.1%, Gun-Related Murder-Suicide 9.1%, Poisoning 9.1%, and the remaining causes each at 4.5% of asphyxiation, drowning, scalding and sexual assault.
- For neglect fatalities the most common causes of death by occurrence were: Vehicular 31.4%, Fire 17.1%, Drowning and Medical Neglect each 11.4%, Poisoning 8.6%, Positional Asphyxiation and Gun-Related each 5.7%, and the remaining each 2.9% for Asphyxiation, Drug-Related and Undetermined.
- 19 (33.3%) of the total 57 child fatalities occurred in families with at least one prior child protective services substantiated investigation. This reflects an increase from SFY 2003 when 11 (22%) of the total 51 child fatalities occurred in families with prior child protective services substantiated investigation.
- Fatalities from both abuse and neglect with alcohol/drug involvement decreased from 14 (27%) in SFY 2003 to 10(18%) in SFY 2004. In SFY 2004, 4 of the 22 abuse fatalities involved alcohol/drug and 6 of the 35 neglect fatalities for 10 out of the total 57 fatalities. This compares to 6 out of 34 abuse and 8 out of 17 neglect fatalities or 14 out of 51 total fatalities in SFY 2003.
- 44 (77%) of the 57 fatalities occurred in households where there were other siblings in the family. 15 (68%) of 22 abuse households and 29

Child Abuse and Neglect SFY 2004 Annual Fatality Report

(83%) of 35 neglect households were households with other siblings. This reflects an increase from the prior year where 63% or 32 of the 51 fatalities occurred in households where there were other siblings in the family.

Characteristics of Perpetrators

- There were 31 identified abuse perpetrators and 51 identified neglect perpetrators for SFY 2004. More than one perpetrator may be identified for each fatality.
- As was true in past years, the majority of perpetrators were natural parents. 18 (58%) of the 31 abuse perpetrators and 40 (78%) of the 51 neglect perpetrators were natural parents.
- The majority of abuse perpetrators were male 17 (55%) of the 31. As in prior years, the majority of neglect perpetrators were female, 30 (59%) of the 51.
- In previous years, the majority of abuse and neglect perpetrators were White. This remains true for SFY 2004 with White perpetrators comprising 25 (81%) of the 31 abuse and 46 (90%) of the 51 neglect perpetrators. Black perpetrators comprised 4 (13%) of the 31 abuse and 4 (8%) of the 51 neglect perpetrators, followed by American Indian/Eskimo 0 abuse and 1 neglect perpetrators. There were 2 perpetrators of unknown race.
- As was true in previous years, the prevalent age category of the perpetrators in both abuse and neglect remained in the range of 20-24 years of age. SFY 2004 fatality data indicated that 14 (45%) of abuse perpetrators fell into this category of 20-24 years old, followed by 12 (39%) in the 25-34 years old category and 3(10%) in the 35-49 year old category and 2 (6%) unknown ages. The prevalent age categories for the neglect perpetrators were in the 20-24 and 30-34 age categories each comprising 12 (24%) for a total of 24 (48%) of the total 51 neglect perpetrators. The next significant age categories for neglect perpetrators were 40-49 with 9 (18%) and 25-29 with 7 (14%). The remaining ranged from 1 under 16 to 1 at 50+ and 4 unknown ages.
- SFY 2004 recorded 2 Gun-Related child fatalities involving Parent/Child Murder-Suicide. This reflects a decrease from the 5 Gun-Related child fatalities involving Parent/Child Murder-Suicide reported in SFY 2003.

Characteristics of Parents

- The majority of abuse and neglect occurred in two-parent households for SFY 2004.

Child Abuse and Neglect SFY 2004 Annual Fatality Report

- In abuse cases, 10(45%) of the 22 abuse households were 2 parent, while 7(32%) were single parent, 3 (14%) were multi-family, and 2 (9%) including 1 extended and 1 unknown.
- In neglect cases, 17 (49%) of the 35 neglect households were 2 parent, while 11 (31%) were single parent, 3 (9%) were extended family and the remaining 4 (11%) were 2 multi-family, 1 day care and 1 unknown.

The most common stress factors in abuse cases were:

- (1) Lack of parenting skills;
- (2) Family discord/marital problems;
- (3) Pregnancy/new child;
- (4) Authoritarian Method/Discipline
- (5) Mental Health Problems

The most common stress factors in neglect cases were:

- (1)Lack of parenting skills;
- (2)Pregnancy/new child;
- (3)Heavy child care responsibility;
- (4)Family discord/marital problems;
- (5)Drug dependency, and Insufficient income

State of Indiana
Department of Child Services
Child Abuse and Neglect SFY 2004 Annual Fatality Report

Page left intentionally blank

State of Indiana
Department of Child Services

CHILD FATALITIES - ABUSE STATISTICS
DEMOGRAPHIC CHARACTERISTICS OF THE CHILD
FOR STATE FISCAL YEAR 2004

Child Fatalities

Abuse Fatalities SFY 04	Total Fatalities SFY 04
22	57

County of Occurrence

SFY 04	
Allen	1
Clark	1
DeKalb	1
DuBois	1
Elkhart	1
Johnson	2
Knox	1
Lake	3
Laporte	1
Marion	1
Monroe	1
Porter	2
St Joseph	2
Tippecanoe	1
Vanderburgh	2
Vigo	1
Total	22

Age of the Child

SFY 04		
Under 1	6	27.3%
01	4	18.2%
02	7	31.8%
03	3	13.6%
04	1	4.5%
05	1	4.5%
06	0	0.0%
07	0	0.0%
08	0	0.0%
09	0	0.0%
10-12	0	0.0%
13-17	0	0.0%
Unreported	0	0.0%
Total	22	

Type of Physical Abuse*

SFY 04	
Death	22
Bruises, Cuts, Welts	4
Bone Fractures	3
Skull Fracture	7
Internal Injury	5
Wounds, Punctures, Bites	0
Burns or Scalds	1
Poisoning	1
Asphyxiation/ Suffocation	3
Shaking/ Dislocation/ Sprains	1
Drowning	1
Inappropriate Discipline	1
Gunshot Wounds	2
Shaken Baby syndrome	3
Alcohol Abused Child	0
Drug Abused Child	0
Total	54

**May list more than one item for each fatality*

Sex of the Child

SFY 04		
Female	9	40.9%
Male	13	59.1%
Total	22	

Source of Report

SFY 04	
Hospital/ Clinic	8
Law Enforcement	8
Other	2
Parent/ Guardian	1
Prosecutor	2
Total	21

Race of the Child

SFY 04		
Black	5	22.7%
White	17	77.3%
Total	22	

Prepared by:
Office of Data Management
Tuesday, February 08, 2005

Source:
Department of Child Services
Child Fatality Review Reports

State of Indiana
Department of Child Services

CHILD FATALITIES - ABUSE STATISTICS
DEMOGRAPHIC CHARACTERISTICS OF THE HOUSEHOLD
FOR STATE FISCAL YEAR 2004

**Type of Household
Where Incident Occurred**

SFY 04	
Extended Family	1
Multi-Family	3
Single Parent	7
Two Parent	10
Unknown	1
Total	22

Marital Status of Parents

SFY 04	
Living Together	13
Married	3
Separated	2
Single	4
Total	22

Other Siblings in the Family

SFY 04	
Yes	15
No	7
Total	22

Male Caregiver's Income

SFY 04	
Unknown	9
Unemployed	3
Labor/ Skilled	2
Labor/ Unskilled	2
Service Work	2
Sales	2
Management/ Administration	1
Other	1
Total	22

Female Caregiver's Income

SFY 04	
Unknown	4
Unemployed	1
Labor/ Skilled	2
Labor/ Unskilled	2
Service Work	5
Sales	1
Professional/ Technical	1
TANF	2
Other	4
Total	22

Male Caregiver's Education

SFY 04	
High School Graduate	4
College Graduate	1
Partial College	1
Unknown	14
Partial High School	2
Total	22

Female Caregiver's Education

SFY 04	
High School Graduate	9
College Graduate	1
Partial College	1
Post Graduate Work	1
Unknown	7
Partial High School	3
Total	22

Prepared by:
Office of Data Management
Tuesday, February 08, 2005

Source:
Department of Child Services
Child Fatality Review Reports

State of Indiana
Department of Child Services

CHILD FATALITIES - ABUSE STATISTICS
DEMOGRAPHIC CHARACTERISTICS OF THE PERPETRATOR
FOR STATE FISCAL YEAR 2004

Relationship of Perpetrator to Child*

SFY 04	
Mother	9
Father	9
Mother's Boyfriend	8
Father's Girlfriend	2
Other Relative	1
Unknown	1
Baby Sitter	1
Total	31

Age of Perpetrator*

SFY 04	
20 - 24	14
25 - 29	6
30 - 34	6
35 - 39	2
40 - 49	1
Unknown	2
Total	31

Race of Perpetrator*

SFY 04	
White	25
Black	4
Unknown	2
Total	31

Sex of Perpetrator*

SFY 04	
Female	13
Male	17
Unknown	1
Total	31

**May list more than one perpetrator for each fatality*

Prepared by:
Office of Data Management
Tuesday, February 08, 2005

Source:
Department of Child Services
Child Fatality Review Reports

State of Indiana
Department of Child Services

**CHILD FACILITIES - ABUSE STATISTICS
VICTIM STRESS FACTORS
FOR STATE FISCAL YEAR 2004**

Victim's Stress Factors*

SFY 04	
ADD/ ADHD	0
Battered Child Syndrome	10
Behavior Problems	0
Chronic Illness	3
Drug Addiction/ Substance Abuse	0
Emotional Disturbance	0
Failure to Thrive	0
Fetal Alcohol Syndrome	0
Involved Juvenile Court	0
Mental Retardation	0
Multiple Birth	0
None	30
Physically Handicapped	0
Premature Birth	2
School Related Problem	0
Suspected History of Neglect	0
Suspected History of Physical Abuse	0
Suspected History of Sexual Abuse	0
Total	45

**All statistics are listed by child. May list more than one item for each child.*

Prepared by:
Office of Data Management
Tuesday, February 08, 2005

Source:
Department of Child Services
Child Fatality Review Reports

State of Indiana
Department of Child Services

**CHILD FATALITIES - ABUSE STATISTICS
PRIMARY CAREGIVER'S STRESS FACTORS
FOR STATE FISCAL YEARS 2004**

Male Caregiver's Stress Factors*

SFY 04	
Abused/ Neglected as Children	1
Alcoholism	1
Authoritarian Method/ Discipline	4
Caring for Special Needs Child	1
Domestic Violence	1
Drug Dependency	1
Emotionally Disturbed	4
Family Discord/ Marital Problems	7
Heavy Child Care Responsibilities	3
Inadequate Housing	0
Insufficient Income	2
Job Related Problems	3
Lack Parenting Skills	8
Language Problem	1
Learning Disabled	0
Mental Health Problems	3
None	0
Other Addictive Condition	0
Parental Mental Retardation	0
Physical Health Problems	2
Physically Disabled	0
Poor Money Management	0
Pregnancy/ New Child	4
Recent Relocation	1
Social Isolation	0
Spouse Abuse/ Family Violence	0
Unknown	7
Unstable Living Conditions	1
Visual/ Hearing Problems	0
Total	55

Female Caregiver's Stress Factors*

SFY 04	
Abused/ Neglected as Children	1
Alcoholism	1
Authoritarian Method/ Discipline	5
Caring for Special Needs Child	1
Domestic Violence	0
Drug Dependency	1
Emotionally Disturbed	2
Family Discord/ Marital Problems	6
Heavy Child Care Responsibilities	6
Inadequate Housing	0
Insufficient Income	0
Job Related Problems	0
Lack Parenting Skills	9
Language Problem	0
Learning Disabled	0
Mental Health Problems	5
None	2
Other Addictive Condition	0
Parental Mental Retardation	0
Physical Health Problems	1
Physically Disabled	0
Poor Money Management	0
Pregnancy/ New Child	8
Recent Relocation	1
Social Isolation	1
Spouse Abuse/ Family Violence	0
Unknown	3
Unstable Living Conditions	3
Visual/ Hearing Problems	0
Total	56

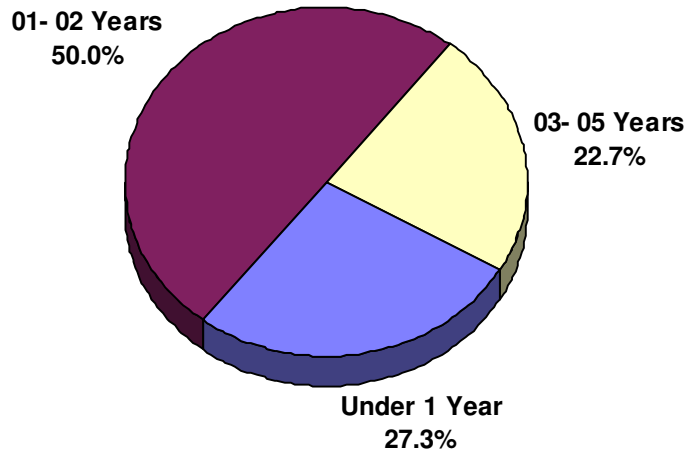
****All statistics are listed by child, may count one parent twice if two children died. May list more than one item for each parent. Stress factors may be reported for a primary caretaker if the biological parent is not living in the home.***

Prepared by:
Office of Data Management
Tuesday, February 08, 2005

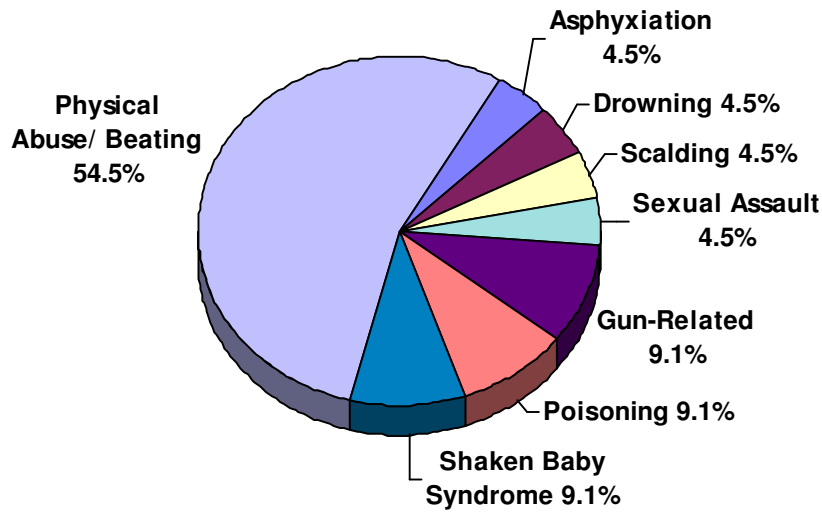
Source:
Department of Child Services
Child Fatality Review Reports

State of Indiana
Department of Child Services
CHILD FATALITIES - ABUSE STATISTICS

**STATE FISCAL YEAR 2004 ABUSE FATALITIES
BY AGE OF CHILD**



**STATE FISCAL YEAR 2004 ABUSE FATALITIES
BY CAUSE OF DEATH**



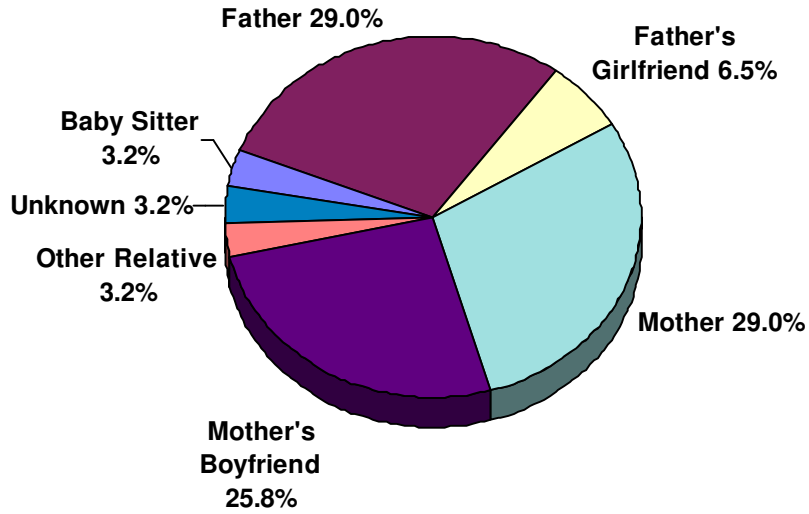
Prepared by:
Office of Data Management
Tuesday, February 08, 2005

Source:
Department of Child Services
Child Fatality Review Reports

State of Indiana
Department of Child Services

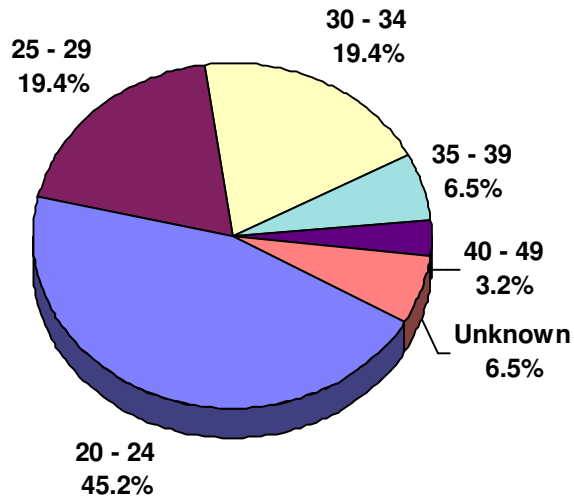
CHILD FATALITIES - ABUSE STATISTICS

**STATE FISCAL YEAR 2004 ABUSE FATALITIES
BY PERPETRATOR***



**May list more than one item for each fatality*

**STATE FISCAL YEAR 2004 ABUSE FATALITIES
BY AGE OF PERPETRATOR***



**May list more than one item for each fatality*

Prepared by:
Office of Data Management
Tuesday, February 08, 2005

Source:
Department of Child Services
Child Fatality Review Reports

**State of Indiana
Department of Child Services
CHILD FATILITIES - ABUSE STATISTICS**

This page left intentionally blank

Prepared by:
Office of Data Management
Tuesday, February 08, 2005

Source:
Department of Child Services
Child Fatality Review Reports

State of Indiana
Department of Child Services

CHILD FATALITIES - NEGLECT STATISTICS
DEMOGRAPHIC CHARACTERISTIC OF THE CHILD
FOR STATE FISCAL YEAR 2004

Child Fatalities

Neglect Fatalities SFY 04	Total Fatalities SFY 04
35	57

County of Occurrence

SFY 04	
Allen	1
Carroll	1
Clay	1
Dearborn	1
Decatur	1
Elkhart	2
Franklin	1
Gibson	1
Johnson	1
Lake	2
Laporte	1
Lawrence	1
Madison	1
Marion	8
Marshall	1
Miami	1
Monroe	1
Putnam	1
Scott	1
Sullivan	1
Vanderburgh	3
Warren	1
Wells	1
White	1
Total	35

Age of the Child

SFY 04		
Under 1	10	28.6%
01	5	14.3%
02	4	11.4%
03	5	14.3%
04	2	5.7%
05	1	2.9%
06	0	0.0%
07	1	2.9%
08	2	5.7%
09	2	5.7%
10-12	0	0.0%
13-17	3	8.6%
Unreported	0	0.0%
Total	35	

Type of Neglect*

SFY 04	
Death	35
Lack of Supervision	17
Failure to Thrive	0
Malnutrition	0
Medical Neglect	5
Educational Neglect	0
Abandonment	0
Close Confinement	0
Lock in/ Out	0
Lack Food, Shelter, Clothing	0
Environment Life/ Health Danger	25
Poor Hygiene	0
Drug Abuse	1
Fetal Alcohol Syndrome	0
Total	83

**May list more than one item for each fatality*

Sex of the Child

SFY 04		
Female	17	48.6%
Male	18	51.4%
Total	35	

Source of Report

SFY 04	
Anonymous	1
Hospital/ Clinic	5
Law Enforcement	18
Other	1
Public Social Agency	6
Total	31

Race of the Child

SFY 04		
American Indian, Eskimo, Aleut.	1	2.9%
Black	3	8.6%
White	31	88.6%
Total	35	

Prepared by:
Office of Data Management
Tuesday, February 08, 2005

Source:
Department of Child Services
Child Fatality Review Reports

State of Indiana
Department of Child Services

CHILD FATALITIES - NEGLECT STATISTICS
DEMOGRAPHIC CHARACTERISTIC OF THE HOUSEHOLD
FOR STATE FISCAL YEAR 2004

**Type of Household
Where Incident Occurred**

SFY 04	
Day Care Home Unlicensed	1
Extended Family	5
Multi-Family	2
Single Parent	9
Two Parent	17
Unknown	1
Total	35

Marital Status of Parents

SFY 04	
Divorced	2
Living Together	9
Married	13
Separated	2
Single	9
Total	35

Other Siblings in the Family

SFY 04	
Yes	29
No	6
Total	35

Male Caregiver's Income

SFY 04	
Unknown	16
Unemployed	1
Labor/ Skilled	2
Labor/ Unskilled	8
Craftsman	1
Sales	1
Professional/ Technical	3
Social Security/ Pension	1
Other	2
Total	35

Female Caregiver's Income

SFY 04	
Unknown	10
Unemployed	8
Labor/ Skilled	1
Labor/ Unskilled	3
Service Work	2
Professional/ Technical	1
TANF	4
Other Public Assistance	2
Social Security/ Pension	2
Other	2
Total	35

Male Caregiver's Education

SFY 04	
High School Graduate	5
GED	1
College Graduate	3
Unknown	25
Partial High School	1
Total	35

Female Caregiver's Education

SFY 04	
High School Graduate	5
College Graduate	2
Partial College	3
Unknown	23
Partial High School	2
Total	35

Prepared by:
Office of Data Management
Tuesday, February 08, 2005

Source:
Department of Child Services
Child Fatality Review Reports

**CHILD FATALITIES - NEGLECT STATISTICS
DEMOGRAPHIC CHARACTERISTIC OF THE PERPETRATOR
FOR STATE FISCAL YEAR 2004**

Relationship of Perpetrator to Child*

SFY 04	
Mother	25
Father	15
Mother's Boyfriend	1
Other Relative	4
Friend	1
Sibling	1
Baby Sitter	2
Caregiver	2
Total	51

Age of Perpetrator*

SFY 04	
Under 16	1
16 - 19	2
20 - 24	12
25 - 29	7
30 - 34	12
35 - 39	3
40 - 49	9
50 +	1
Unknown	4
Total	51

Race of Perpetrator*

SFY 04	
White	46
Black	4
American Indian, Eskimo, Aleut.	1
Total	51

Sex of Perpetrator*

SFY 04	
Female	30
Male	21
Total	51

**May list more than one perpetrator for each fatality*

State of Indiana
Department of Child Services

CHILD FATALITIES - NEGLECT STATISTICS
VICTIM STRESS FACTORS
FOR STATE FISCAL YEAR 2004

Victim's Stress Factors*

SFY 04	
ADD/ ADHD	0
Battered Child Syndrome	0
Behavior Problems	0
Chronic Illness	8
Drug Addiction/ Substance Abuse	1
Emotional Disturbance	0
Failure to Thrive	3
Fetal Alcohol Syndrome	0
Involved Juvenile Court	3
Mental Retardation	0
Multiple Birth	0
None	55
Physically Handicapped	1
Premature Birth	3
School Related Problem	0
Suspected History of Neglect	0
Suspected History of Physical Abuse	0
Suspected History of Sexual Abuse	0
Total	74

**All statistics are listed by child. May list more than one item for each individual.*

State of Indiana
Department of Child Services

**CHILD FATALITIES - NEGLECT STATISTICS
PRIMARY CAREGIVER'S STRESS FACTORS
FOR STATE FISCAL YEAR 2004**

Male Caregiver's Stress Factors*

SFY 04	
Abused/ Neglected as Children	0
Alcoholism	2
Authoritarian Method/ Discipline	0
Caring for Special Needs Child	2
Domestic Violence	2
Drug Dependency	2
Emotionally Disturbed	1
Family Discord/ Marital Problems	6
Heavy Child Care Responsibilities	6
Inadequate Housing	2
Insufficient Income	4
Job Related Problems	1
Lack Parenting Skills	11
Language Problem	0
Learning Disabled	1
Mental Health Problems	2
None	3
Other Addictive Condition	0
Parental Mental Retardation	0
Physical Health Problems	0
Physically Disabled	1
Poor Money Management	0
Pregnancy/ New Child	1
Recent Relocation	3
Social Isolation	0
Spouse Abuse/ Family Violence	0
Unknown	12
Unstable Living Conditions	1
Visual/ Hearing Problems	1
Total	64

Female Caregiver's Stress Factors*

2004	
Abused/ Neglected as Children	3
Alcoholism	2
Authoritarian Method/ Discipline	1
Caring for Special Needs Child	2
Domestic Violence	3
Drug Dependency	7
Emotionally Disturbed	2
Family Discord/ Marital Problems	4
Heavy Child Care Responsibilities	5
Inadequate Housing	3
Insufficient Income	5
Job Related Problems	0
Lack Parenting Skills	14
Language Problem	0
Learning Disabled	1
Mental Health Problems	3
None	3
Other Addictive Condition	1
Parental Mental Retardation	0
Physical Health Problems	2
Physically Disabled	1
Poor Money Management	1
Pregnancy/ New Child	11
Recent Relocation	2
Social Isolation	1
Spouse Abuse/ Family Violence	0
Unknown	3
Unstable Living Conditions	3
Visual/ Hearing Problems	1
Total	84

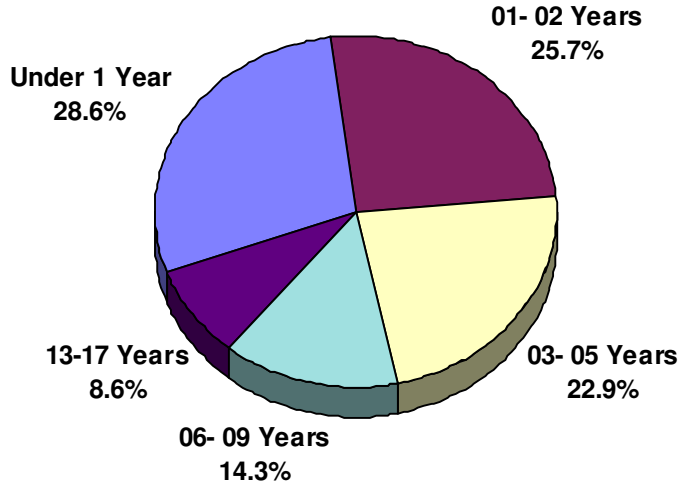
****All statistics are listed by child, may count one parent twice if two children died. May list more than one item for each parent. Stress factors may be reported for a primary caretaker if the biological parent is not living in the home.***

Prepared by:
Office of Data Management
Tuesday, February 08, 2005

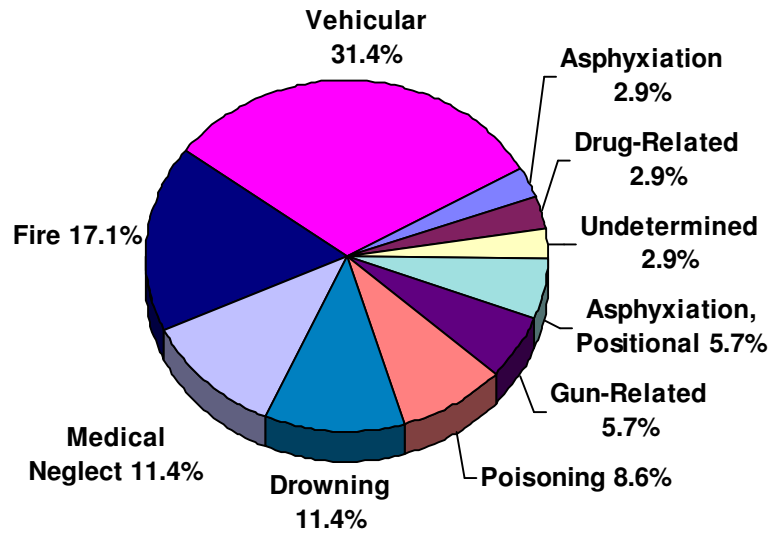
Source:
Department of Child Services
Child Fatality Review Reports

State of Indiana
 Department of Child Services
CHILD FATALITIES - NEGLECT STATISTICS

**STATE FISCAL YEAR 2004 NEGLECT FATALITIES
 BY AGE OF CHILD**



**STATE FISCAL YEAR 2004 NEGLECT FATALITIES
 BY CAUSE OF DEATH**

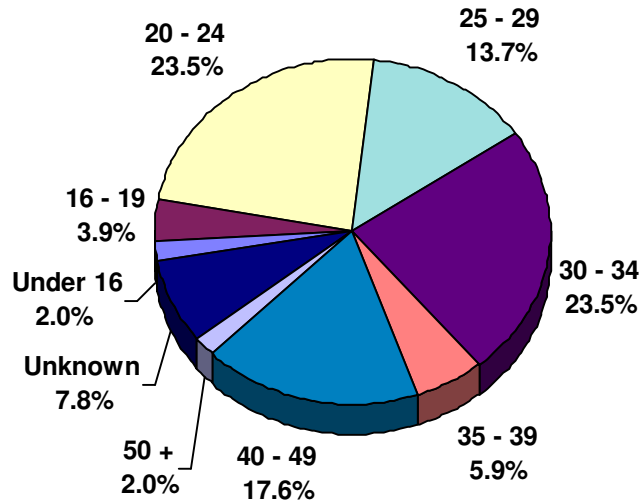


Prepared by:
 Office of Data Management
 Tuesday, February 08, 2005

Source:
 Department of Child Services
 Child Fatality Review Reports

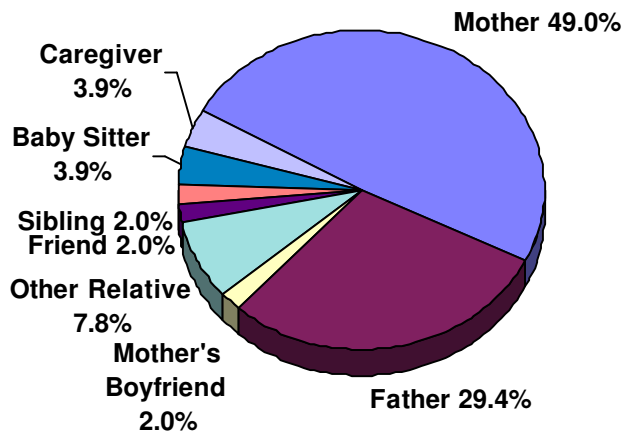
State of Indiana
Department of Child Services
CHILD FATALITIES - NEGLECT STATISTICS

**STATE FISCAL YEAR 2004 NEGLECT FATALITIES
BY AGE OF PERPETRATOR***



**May list more than one perpetrator for each fatality*

**STATE FISCAL YEAR 2004 NEGLECT FATALITIES
BY PERPETRATOR**



**May list more than one perpetrator for each fatality*

**State of Indiana
Department of Child Services
CHILD FATALITIES - NEGLECT STATISTICS**

This page left intentionally blank

Prepared by:
Office of Data Management
Tuesday, February 08, 2005

Source:
Department of Child Services
Child Fatality Review Reports

**State of Indiana
Department of Child Services**

**COUNTY OF OCCURANCE OF ALL CHILD FATALITIES
FOR STATE FISCAL YEAR 2004**

	SFY 04		
	ABUSE	NEGLECT	TOTAL
Allen	1	1	2
Carroll	0	1	1
Clark	1	0	1
Clay	0	1	1
Dearborn	0	1	1
Decatur	0	1	1
DeKalb	1	0	1
DuBois	1	0	1
Elkhart	1	2	3
Franklin	0	1	1
Gibson	0	1	1
Johnson	2	1	3
Knox	1	0	1
Lake	3	2	5
Laporte	1	1	2
Lawrence	0	1	1
Madison	0	1	1
Marion	1	8	9
Marshall	0	1	1
Miami	0	1	1
Monroe	1	1	2
Porter	2	0	2
Putnam	0	1	1
St Joseph	2	0	2
Scott	0	1	1
Sullivan	0	1	1
Tippecanoe	1	0	1
Vanderburgh	2	3	5
Vigo	1	0	1
Warren	0	1	1
Wells	0	1	1
White	0	1	1
Statewide	22	35	57

Prepared by:
Office of Data Management
Tuesday, February 08, 2005

Source:
Department of Child Services
Child Fatality Review Reports

State of Indiana
Department of Child Services

**RISK FACTORS AND PREVENTION ACTIVITIES FOR ALL CHILD FATALITIES
FOR STATE FISCAL YEAR 2004**

Primary Risk Factors Involved

SFY 04	
Not Reported	3
Behavioral	23
Economic	2
Environmental	3
Drug/ Alcohol	10
Product	6
Social	2
Medical	4
Other	4
Total	57

Lead Organization for Prevention Activities

SFY 04	
Not Reported	11
Health Department	6
Social Services	7
Police, Etc.	11
Schools	1
Mental Health	13
Local Comm Group	1
DFC	7
Total	57

Risk Factors Identified In Family Prior to Death

SFY 04	
Yes	28
No	29
Total	57

Risk Factors Identified in Community Prior to Death

SFY 04	
Yes	28
No	29
Total	57

Prevention Activities Proposed Since Death*

SFY 04	
Not Reported	1
Community Safety Project	1
Product Safety Action	2
Educational Activities in Schools	2
Educational Activities in Media	13
New Services	1
Changes in Agency Practice	3
Other Programs/ Activities	5
No Change	29
Total	57

Prevention Activities Occurred Since Death*

SFY 04	
Product Safety Action	2
Educational Activities in Schools	1
Educational Activities in Media	12
New Services	1
Changes in Agency Practice	2
Other Programs/ Activities	2
No Change	37
Total	57

**May list more than one prevention activity for each fatality*

**May list more than one prevention activity for each fatality*

Drug/ Alcohol Involvement

SFY 04	
Abuse Fatalities	4
Neglect Fatalities	6
Total	10

**State of Indiana
Department of Child Services**

**INVESTIGATION STATISTICS OF ALL CHILD FATALITIES
FOR STATE FISCAL YEAR 2004**

	SFY 04		
	ABUSE	NEGLECT	TOTAL
Total Child Fatalities	22	35	57
Coroner cases	22	29	51
% of Total	100.0%	82.9%	89.5%
Autopsies performed	21	27	48
% of Total	95.5%	77.1%	84.2%
Scene was investigated by Coroner	10	22	32
% of Total	45.5%	62.9%	56.1%
Scene was investigated by Law Enforcement	20	33	53
% of Total	90.9%	94.3%	93.0%
Scene was investigated by Fire Investigator	1	8	9
% of Total	4.5%	22.9%	15.8%
Emergency Medical Services was on scene	5	17	22
% of Total	22.7%	48.6%	38.6%
Scene was investigated by Other	13	13	26
% of Total	59.1%	37.1%	45.6%
Prior Substantiated CPS Investigations	8	11	19
% of Total	36.4%	31.4%	33.3%
1 Prior	2	2	4
2 Prior	0	1	1
3 Prior	1	0	1
4 Prior	1	1	2
5 Prior	0	2	2
6 Prior or More	0	0	0
Number of Times not Available	4	5	9

Prepared by:
Office of Data Management
Tuesday, February 08, 2005

Source:
Department of Child Services
Child Fatality Review Reports

State of Indiana
 Department of Child Services
**PRIMARY CAUSE OF DEATH STATISTICS OF ALL CHILD FATALITIES
 FOR STATE FISCAL YEAR 2004**

	SFY 04		
	ABUSE	NEGLECT	TOTAL
Total Child Fatalities	22	35	57
Asphyxiation	1	1	2
% of deaths from abuse or neglect	4.5%	2.9%	3.5%
Asphyxiation, Positional	0	2	2
% of deaths from abuse or neglect	0.0%	5.7%	3.5%
Drowning	1	4	5
% of deaths from abuse or neglect	4.5%	11.4%	8.8%
Drug-Related	0	1	1
% of deaths from abuse or neglect	0.0%	2.9%	1.8%
Exposure	0	0	0
% of deaths from abuse or neglect	0.0%	0.0%	0.0%
Fire	0	6	6
% of deaths from abuse or neglect	0.0%	17.1%	10.5%
Gun-Related	2	2	4
% of deaths from abuse or neglect	9.1%	5.7%	7.0%
Accidental	0	1	1
Homicide	0	1	1
Murder- Suicide	2	0	2
Murder-Attempted Suicide	0	0	0
Suicide	0	0	0
Undetermined	0	0	0
Health Endangering/ Lack of Supervision	0	0	0
% of deaths from abuse or neglect	0.0%	0.0%	0.0%
Medical Neglect	0	4	4
% of deaths from abuse or neglect	0.0%	11.4%	7.0%
Physical Abuse/ Beating	12	0	12
% of deaths from abuse or neglect	54.5%	0.0%	21.1%
Poisoning	2	3	5
% of deaths from abuse or neglect	9.1%	8.6%	8.8%
Scalding	1	0	1
% of deaths from abuse or neglect	4.5%	0.0%	1.8%
Sexual Assault	1	0	1
% of deaths from abuse or neglect	4.5%	0.0%	1.8%
Shaken Baby Syndrome	2	0	2
% of deaths from abuse or neglect	9.1%	0.0%	3.5%
Undetermined	0	1	1
% of deaths from abuse or neglect	0.0%	2.9%	1.8%
Unknown	0	0	0
% of deaths from abuse or neglect	0.0%	0.0%	0.0%
Vehicular	0	11	11
% of deaths from abuse or neglect	0.0%	31.4%	19.3%

Prepared by:
 Office of Data Management
 Tuesday, February 08, 2005

Source:
 Department of Child Services
 Child Fatality Review Reports