

**Family and Social Services Administration
Division of Family and Children**

Child Abuse and Neglect SFY 2003 Annual Report

Overview

There were 51 **abuse** and **neglect** fatalities substantiated in SFY 2003. This report includes deaths reported in State Fiscal Year 2003 (July 2002 – June 2003). This reflects a change from the SFY 2002 Report which included deaths occurring in SFY 2002 as well as deaths occurring in prior years but substantiated in SFY 2002.

Of the 51 fatalities, 34 (67%) were due to **abuse** and 17 (33%) were due to **neglect**.

Overall, the primary cause of all the abuse and neglect deaths was attributed to Physical Abuse/Beating for 10 (20%) of the total 51 fatalities substantiated in SFY 2003. Shaken Baby Syndrome was the second leading cause of death with 8 (16%) followed by 7 (14%) Abuse Asphyxiation and Drowning and Gun-related with 5 (10%) each. The remaining deaths were caused by 4 Positional Asphyxiation (8%), 3 Vehicular (6%), and Drug-related, Fire, Exposure and Medical Neglect each one accounting for 2 (4%). There was 1 (2%) Poisoning fatality.

There were 34 **abuse** fatalities.

- The primary cause of **abuse** deaths was attributed to Physical Abuse/Beating accounting for 10 (29%) of the 34 **abuse** deaths.
- Shaken Baby Syndrome was the second leading cause of **abuse** deaths accounting for 8 (24%) of deaths, followed by 7 (21%) Abuse Asphyxiation.
- Gun-related Parent/Child Murder-Suicide accounted for 5 (15%) of **abuse** deaths.
- The remaining 4 **abuse** deaths were attributed to 2 (6%) Drowning, 1 (3%) Positional Asphyxiation, and 1 (3%) Poisoning.

There were 17 **neglect** fatalities.

- The 3 primary causes of **neglect** deaths were Positional Asphyxiation, Drowning and Vehicular each with 3 (17.6%) of deaths accounting for 9 (53%) of the 17 **neglect** deaths.
- The 4 secondary causes of **neglect** deaths were Drug-related, Exposure, Fire and Medical Neglect each with 2 (11.7%) of deaths accounting for 8 (47%) of the 17 **neglect** deaths.

The majority of **abuse** and **neglect perpetrators** for SFY 2003 were White.

- For **abuse**, White perpetrators comprised 26 of 49 (53%), Black 15 of 49 (31%), Hispanic 4 of 49 (8%), American Indian/Eskimo 3 of 49 (6%) and 1 (2%) of 49 was Unknown.
- For **neglect**, White perpetrators comprised 15 of 20 (75%); Black 4 of 20 (20%) and 1 of 20 (5%) was Asian/Pacific.

The majority of **abuse** and **neglect victims** for SFY 2003 were White.

- For **abuse**, White victims comprised 15 of 34 (44%), Black 10 of 34 (29%) and 4 of 34 (12%) were Hispanic.
- For **neglect**, White victims comprised 12 of 17 (71%), Black 3 of 17 (18%) and 1 Asian/Pacific and 1 Multi-racial each (6%).

**Family and Social Services Administration
Division of Family and Children**

Characteristics of Victims

- There were 51 total fatalities from both **abuse** and **neglect** substantiated in SFY 2003.
- Of the 51 fatalities, 34 (67%) were due to **abuse** and 17 (33%) were due to **neglect**.
- As was true in past years, fatalities from both **abuse** and **neglect** occurred most often in young children. (**Abuse**: 44% under one year of age, 85% five years and under; **Neglect**: 35% under one year of age, 65% five years and under).
- As noted in previous years more boys died due to **abuse** and **neglect** than girls. Boys comprised 56% of **abuse** and 59% of **neglect** fatalities.
- As was true in past years, fatalities from both **abuse** and **neglect** occurred most often with White children (**abuse** 44% and **neglect** 71%) followed by Black children (**abuse** 29% and **neglect** 18%), Hispanic children (12% **abuse** and 0% **neglect**), American Indian/Eskimo (9% **abuse** and 0 % **neglect**), Multi-racial (6% **abuse** and 6% **neglect**) and Asian/Pacific (0% **abuse** and 6% **neglect**).
- As a percentage of total fatalities, Black victims decreased 16% from 42% in SFY 2002 to 25% in SFY 2003. White victims decreased 4% from 57% in SFY 2002 to 53% in SFY 2003.
 - As a percentage of total fatalities, Hispanic victims increased 6% from 1% in SFY 2002 to 7% in SFY 2003. American Indian/Eskimo and Multi-racial each increased 6% from 0% in SFY 2002 to 6% in SFY 2003.
- For **abuse** fatalities, the most common causes of death by occurrence were: Physical Abuse/Beating 30%, Shaken Baby Syndrome 24%, Abuse Asphyxiation 21%; Gun-Related Murder-Suicide 15%, Drowning 6% and Positional Asphyxiation and Poisoning 3% each.
- For **neglect** fatalities, the most common causes of death by occurrence were: Positional Asphyxiation, Drowning and Vehicular. Each was 17.6% of deaths and accounted for 53% of **neglect** deaths. Drug-related, Exposure, Fire and Medical Neglect each accounted for 11.7% of deaths or 47% of total **neglect** fatalities.
- 11 (22%) of the total 51 child fatalities occurred in families with at least one prior child protective services substantiated investigation.
- Fatalities from both **abuse** and **neglect** with Alcohol/Drug involvement increased from 6 (9%) in SFY 2002 to 14 (27%) in SFY 2003. In 6 (18%) of the 34 **abuse** and 8 (47%) of the 17 **neglect** SFY 2003 deaths Alcohol/Drug involvement was indicated.
- 32 (63%) of the 51 fatalities occurred in households where there were other siblings in the family. 20 **abuse** households (59%) of 34 and 12 **neglect** households (71%) of 17 were households with other siblings.

**Family and Social Services Administration
Division of Family and Children**

Characteristics of Perpetrators

- There were 49 identified **abuse** perpetrators, and 20 identified **neglect** perpetrators for SFY 2003. More than one perpetrator may be identified for each fatality.
- As was true in past years, the majority of perpetrators were natural parents. 31 (63%) of 49 of **abuse** perpetrators and 17 (85%) of 20 of **neglect** perpetrators were natural parents.
- This is the second consecutive year that the majority of **abuse** perpetrators have been female, 26 (53%) of 49. As in previous years, the majority of **neglect** perpetrators were female, 14 (70%) of 20.
- SFY 2003 is the second consecutive year recording child fatalities of substantiated abuse involving teen mothers delivering their babies and subsequently causing their deaths. SFY 2003 recorded 1 teen mother compared to 3 in SFY 2002.
- SFY 2003 records 5 Gun-Related child fatalities involving Parent / Child Murder-Suicide.
- In previous years, the majority of **abuse** and **neglect** perpetrators were White. This remains true for SFY 2003 with White perpetrators comprising 26 (53%) of 49 **abuse** and 15 (75%) of 20 **neglect** perpetrators.
 - Black perpetrators comprised 15 (31%) of 49 **abuse** and 4 (20%) of 20 **neglect** perpetrators, followed by Hispanic perpetrators comprising 4 (8%) of 49 **abuse** and 0 **neglect** perpetrators.
 - American Indian/Eskimo perpetrators comprised 3 (6%) of 49 **abuse** and 0 **neglect** perpetrators. Asian/Pacific comprised 0 **abuse** and 1 (5%) of 20 **neglect** perpetrators. Unknown comprised 1 (2%) of 49 **abuse** and 0 **neglect** perpetrators.
- As a percentage of total perpetrators, Black perpetrators decreased 11% from SFY 2002 to SFY 2003 going from 39% in SFY 2002 to 28% in SFY 2003.
 - As a percentage of total perpetrators Hispanic perpetrators increased 6% from SFY 2002 to SFY 2003 going from 0% in SFY 2002 to 6% in SFY 2003, White increased 4% going from 56% in SFY 2002 to 60% in SFY 2003, American Indian/Eskimo and Unknown each increased 2% from SFY 2002 to SFY 2003.
- As was true in previous years, the prevalent age category of the perpetrators in both **abuse** and **neglect** remained in the range of 20-34 years of age. SFY 2003 fatality data continued to reflect that the majority of perpetrators fell into this age category (82% **abuse** and 75% **neglect**).
- SFY 2003 reported 2 fire deaths involving sibling with prior incidence of fire starting. The prior incident had not been reported to Child Protective Services.

**Family and Social Services Administration
Division of Family and Children**

Characteristics of Parents

- As true in previous years, the majority of **abuse** occurred in two-parent households for SFY 2003. For the first time the majority of **neglect** occurred in single parent households.
 - In **abuse** cases, 18 households (53%) of 34 were two-parent, while 12 (35) % were single parent and 4 (12%) were extended and multi-family households.
 - In **neglect** cases, 8 households (47%) of 17 were single parent, while 6 (35%) were two-parent parent and 3 (18%) were extended and multi-family households.

- The most common stress factors in **abuse** cases were:
 - (1) Lack of parenting skills;
And
Pregnancy/new child;
 - (2) Family discord/marital problems;
 - (3) Heavy child care responsibilities;
And
Insufficient Income;
 - (4) Domestic Violence;
 - (5) Emotionally Disturbed

- The most common stress factors in **neglect** cases were:
 - (1) Lack of parenting skills;
 - (2) Heavy child care responsibility;
 - (3) Unknown;
 - (4) Family discord / marital problems;
And
None;
 - (5) Drug dependency

State of Indiana
Family and Social Services Administration

CHILD ABUSE FATALITIES
DEMOGRAPHIC CHARACTERISTIC OF THE CHILD
FOR STATE FISCAL YEAR 2003

Child Fatalities

Abuse Fatalities SFY 03
34

Total Fatalities SFY 03
51

County of Occurrence

SFY 03	
Allen	2
Bartholomew	1
Clinton	1
Elkhart	2
Floyd	2
Johnson	2
Kosciusko	1
Lake	2
Lawrence	1
Marion	11
Putnam	1
Randolph	1
St Joseph	3
Vermillion	2
Wayne	2
Total	34

Type of Physical Abuse*

SFY 03	
Death	34
Brusies/ Cuts/ Welts	6
Bone Fractures	3
Skull Fracture	8
Internal Injury	10
Wounds/ Punctures/ Bites	1
Burns/ Scalds	0
Poisoning	1
Asphyxiation/ Suffocation	9
Shaking/ Dislocation/ Sprains	2
Drowning	2
Inappropriate Discipline	5
Gunshot Wounds	5
Shaken Baby Syndrome	8
Alcohol Abuse	0
Drug Abuse	0
Total	94

*May list more than one item for each fatality

Age of the Child

SFY 03		
Under 01	15	44.1%
01	7	20.6%
02	5	14.7%
03	1	2.9%
04	1	2.9%
05	1	2.9%
06	0	0.0%
07	1	2.9%
08	0	0.0%
09	0	0.0%
10-12	2	5.9%
13-17	1	2.9%
Unreported	0	0.0%
Total	34	

Source of Report

SFY 03	
Coronor	6
Hospital/ Clinic	11
Law Enforcement	15
Public Social Agency	2
Total	34

Sex of the Child

SFY 03		
Female	15	44.1%
Male	19	55.9%
Total	34	

Race of the Child

SFY 03		
American Indian/ Eskimo	3	8.8%
Black	10	29.4%
Hispanic	4	11.8%
Multi-Racial	2	5.9%
White	15	44.1%
Total	34	

Prepared by:
Family and Social Services Administration
Division of Family and Children
Bureau of Program Evaluation
Thursday, December 18, 2003

Source:
Bureau Family Protection Preservation
Child Fatality Review Reports

State of Indiana
Family and Social Services Administration

CHILD ABUSE FATALITIES
DEMOGRAPHIC CHARACTERISTIC OF THE HOUSEHOLD
FOR STATE FISCAL YEAR 2003

Type of Household

SFY 03	
Multi-Family	4
Single Parent	12
Two Parent	18
Total	34

Marital Status of Parents

SFY 03	
Divorced	1
Living Together	14
Married	8
Separated	4
Single	7
Total	34

Other Siblings in the Family

SFY 03	
Yes	20
No	14
Total	34

Father's Income

SFY 03	
Unknown	18
Unemployed	2
Labor/Skilled	4
Labor/Unskilled	4
Service Work	1
Craftsman	1
Sales	1
Management/Administration	1
Professional/Technical	2
Total	34

Mother's Income

SFY 03	
Unknown	7
Unemployed	5
Labor/Skilled	1
Labor/Unskilled	8
Service Work	4
Clerical/Office	1
Management/Administration	5
Professional/Technical	1
TANF	2
Total	34

Father's Education

SFY 03	
High School Graduate	4
College Graduate	1
Partial College	2
Technical/Vocational	1
Unknown	24
Partial High School	2
Total	34

Mother's Education

SFY 03	
Elementary	2
High School Graduate	7
College Graduate	2
Unknown	22
Partial High School	1
Total	34

Prepared by:
Family and Social Services Administration
Division of Family and Children
Bureau of Program Evaluation
Thursday, December 18, 2003

Source:
Bureau Family Protection Preservation
Child Fatality Review Reports

State of Indiana
Family and Social Services Administration

CHILD ABUSE FATALITIES
DEMOGRAPHIC CHARACTERISTIC OF THE PERPETRATOR
FOR STATE FISCAL YEAR 2003

Relationship of Perpetrator to Child*

SFY 03	
Mother	20
Father	11
Step Father	2
Mother's Boyfriend	8
Acquaintance/ Friend	3
Baby Sitter	5
Total	49

Age of Perpetrator*

SFY 03	
16 - 19	4
20 - 24	23
25 - 29	10
30 - 34	7
35 - 39	4
40 - 49	1
Total	49

Race of Perpetrator*

SFY 03	
White	26
Black	15
American Indian/ Eskimo	3
Hispanic	4
Unknown	1
Total	49

Sex of Perpetrator*

SFY 03	
Female	26
Male	23
Unknown	0
Total	49

**May list more than one perpetrator for each fatality*

**State of Indiana
Family and Social Services Administration**

**CHILD ABUSE FATALITIES
VICTIM STRESS FACTORS
FOR STATE FISCAL YEAR 2003**

Victim's Stress Factors*

SFY 03	
None	28
Chronic Illness	1
Physically Handicapped	0
Mental Retardation	1
Emotional Disturbance	1
Behavior Problems	0
Premature Birth	1
Multiple Birth	0
Involved Juvenile Court	0
School Related Problem	0
Battered Child Syndrome	3
Drug Addiction/Substance Abuse	0
Fetal Alcohol Syndrome	0
Failure to Thrive	1
Attn. Deficit Disorder/Attn. Deficit Hyp. Disorder	0
Total	36

**All statistics are listed by child. May list more than one item for each child.*

Prepared by:
Family and Social Services Administration
Division of Family and Children
Bureau of Program Evaluation
Thursday, December 18, 2003

Source:
Bureau Family Protection Preservation
Child Fatality Review Reports

State of Indiana
Family and Social Services Administration

CHILD ABUSE FATALITIES
FATHER AND MOTHER STRESS FACTORS
FOR STATE FISCAL YEARS 2003

Father's Stress Factors*

SFY 03	
Unknown	6
Emotionally Disturbed	4
Learning Disabled	0
Other addictive condition	0
Caring for Special Needs Child	1
Incarcerated	3
None	1
Alcoholism	4
Drug Dependency	3
Physical Health Problems	1
Mental Health Problems	1
Family Discord/Marital Problems	11
Pregnancy/new child	8
Heavy Child Care Responsibility	7
Parental Mental Retardation	0
Authoritarian Method/Discip.	4
Lack Parenting Skills	14
Spouse Abuse/Family Violence	0
Poor Money Management	0
Insufficient Income	4
Inadequate Housing	0
Recent Relocation	1
Social Isolation	0
Language Problem	2
Unstable Living Conditions	2
Job Related Problems	0
Abused/Neglected as Children	1
Domestic Violence	4
Visual/hearing Problems	1
Physically Disabled	0
Total	83

Mother's Stress Factors*

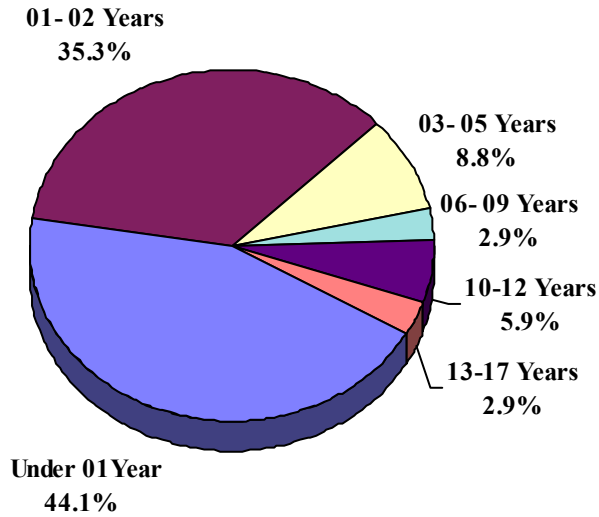
SFY 03	
Unknown	0
Emotionally Disturbed	3
Learning Disabled	0
Other addictive condition	0
Caring for Special Needs Child	1
Incarcerated	0
None	1
Alcoholism	0
Drug Dependency	5
Physical Health Problems	1
Mental Health Problems	4
Family Discord/Marital Problems	10
Pregnancy/new child	17
Heavy Child Care Responsibility	7
Parental Mental Retardation	0
Authoritarian Method/Discip.	0
Lack Parenting Skills	11
Spouse Abuse/Family Violence	0
Poor Money Management	0
Insufficient Income	10
Inadequate Housing	0
Recent Relocation	2
Social Isolation	2
Language Problem	2
Unstable Living Conditions	1
Job Related Problems	1
Abused/Neglected as Children	2
Domestic Violence	6
Visual/hearing Problems	1
Physically Disabled	0
Total	87

**All statistics are listed by child, may count one parent twice if two children died. May list more than one item for each parent. Stress factors may be reported for a primary caretaker if the biological parent is not living in the home.*

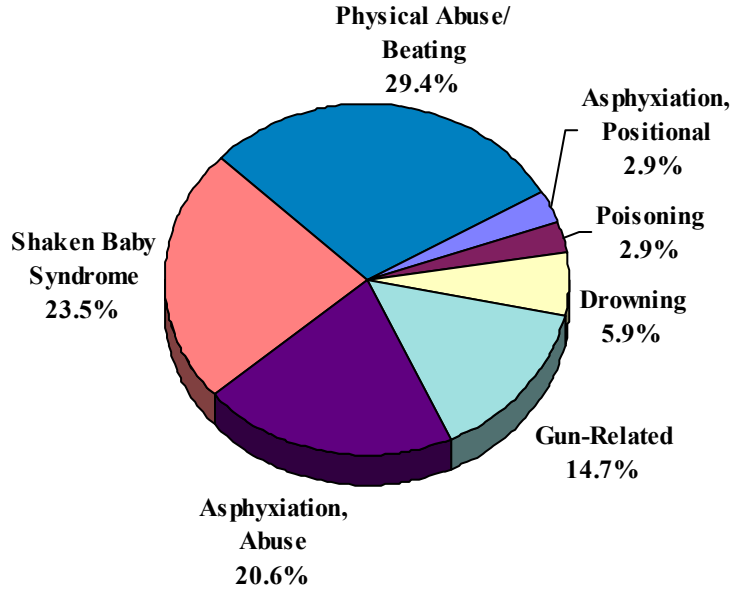
State of Indiana
Family and Social Services Administration

CHILD ABUSE FATALITIES

**STATE FISCAL YEAR 2003 ABUSE FATALITIES
BY AGE OF CHILD**



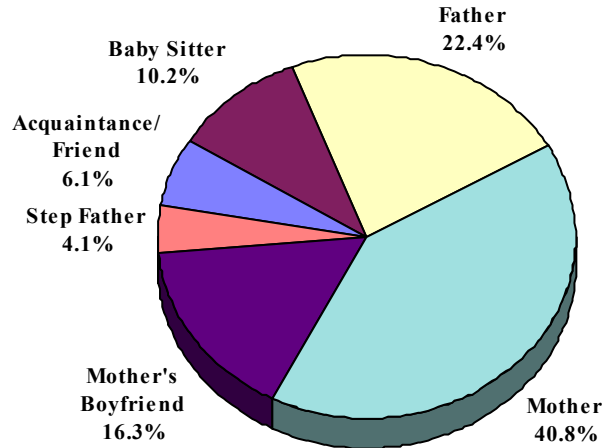
**STATE FISCAL YEAR 2003 ABUSE FATALITIES
BY CAUSE OF DEATH**



State of Indiana
 Family and Social Services Administration

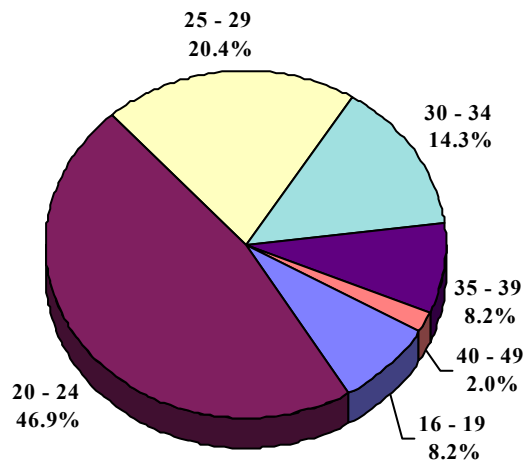
CHILD ABUSE FATALITIES

**STATE FISCAL YEAR 2003 ABUSE FATALITIES
 BY PERPETRATOR***



**May list more than one item for each fatality*

**STATE FISCAL YEAR 2003 ABUSE FATALITIES
 BY AGE OF PERPETRATOR***



**May list more than one item for each fatality*

State of Indiana
Family and Social Services Administration
CHILD ABUSE FATALITIES

This page left intentionally blank

Prepared by:
Family and Social Services Administration
Division of Family and Children
Bureau of Program Evaluation
Thursday, December 18, 2003

Source:
Bureau Family Protection Preservation
Child Fatality Review Reports

**State of Indiana
Family and Social Services Administration**

**CHILD NEGLECT FATALITIES
DEMOGRAPHIC CHARACTERISTIC OF THE CHILD
FOR STATE FISCAL YEAR 2003**

Child Fatalities

Neglect Fatalities SFY 03
17

Total Fatalities SFY 03
51

County of Occurrence

SFY 03	
Floyd	1
Hamilton	1
Hancock	1
Johnson	2
Lake	2
Madison	1
Marion	2
Miami	1
St Joseph	1
Vanderburgh	3
Washington	1
Wayne	1
Total	17

Type of Neglect*

SFY 03	
Death	17
Lack of Supervision	11
Failure to Thrive	0
Malnutrition	1
Medical Neglect	3
Educational Neglect	0
Abandonment	1
Close Confinement	1
Lockin/out	0
Lack Food, Shelter, Clothing	0
Environment Life/Health Danger	11
Poor Hygiene	0
Drug Abuse	2
Fetal Alcohol Syndrome	0
Drowning	3
Total	50

**May list more than one item for each fatality*

Age of the Child

SFY 03		
Under 01	6	35.3%
01	2	11.8%
02	1	5.9%
03	1	5.9%
04	1	5.9%
05	1	5.9%
06	1	5.9%
07	0	0.0%
08	1	5.9%
09	0	0.0%
10-12	1	5.9%
13-17	2	11.8%
Unreported	0	0.0%
Total	17	

Source of Report

SFY 03	
Coronor	2
Hospital/ Clinic	4
Law Enforcement	7
Other	1
Public Social Agency	3
Total	17

Sex of the Child

SFY 03		
Female	7	41.2%
Male	10	58.8%
Total	17	

Race of the Child

SFY 03		
Asian/Pacific	1	5.9%
Black	3	17.6%
Multi-Racial	1	5.9%
White	12	70.6%
Total	17	

Prepared by:
Family and Social Services Administration
Division of Family and Children
Bureau of Program Evaluation
Thursday, December 18, 2003

Source:
Bureau Family Protection Preservation
Child Fatality Review Reports

State of Indiana
Family and Social Services Administration

CHILD NEGLECT FATALITIES
DEMOGRAPHIC CHARACTERISTIC OF THE HOUSEHOLD
FOR STATE FISCAL YEAR 2003

Type of Household

SFY 03	
Extended Family	3
Single Parent	8
Two Parent	6
Total	17

Marital Status of Parents

SFY 03	
Divorced	3
Living Together	3
Married	4
Separated	1
Single	6
Total	17

Other Siblings in the Family

SFY 03	
Yes	12
No	5
Total	17

Father's Income

SFY 03	
Unknown	7
Unemployed	2
Labor/Skilled	3
Labor/Unskilled	2
Craftsman	1
Professional/Technical	2
Total	17

Mother's Income

SFY 03	
Unknown	3
Unemployed	4
Labor/Skilled	1
Labor/Unskilled	1
Service Work	1
Clerical/Office	1
Professional/Technical	2
TANF	3
Social Security/Pension	1
Total	17

Father's Education

SFY 03	
High School Graduate	4
College Graduate	1
Unknown	11
Not School Age	1
Total	17

Mother's Education

SFY 03	
High School Graduate	2
College Graduate	1
Unknown	8
Partial High School	6
Total	17

Prepared by:
Family and Social Services Administration
Division of Family and Children
Bureau of Program Evaluation
Thursday, December 18, 2003

Source:
Bureau Family Protection Preservation
Child Fatality Review Reports

State of Indiana
Family and Social Services Administration

CHILD NEGLECT FATALITIES
DEMOGRAPHIC CHARACTERISTIC OF THE PERPETRATOR
FOR STATE FISCAL YEAR 2003

Relationship of Perpetrator to Child*

SFY 03	
Mother	12
Father	5
Other Relative	2
Acquaintance/ Friend	1
Total	20

Age of Perpetrator*

SFY 03	
16 - 19	2
20 - 24	5
25 - 29	7
30 - 34	3
40 - 49	3
Total	20

Race of Perpetrator*

SFY 03	
White	15
Black	4
Asian/Pacific	1
Total	20

Sex of Perpetrator*

SFY 03	
Female	14
Male	6
Total	20

**May list more than one perpetrator for each fatality*

State of Indiana
Family and Social Services Administration

CHILD NEGLECT FATALITIES
VICTIM STRESS FACTORS
FOR STATE FISCAL YEAR 2003

Victim's Stress Factors*

SFY 03	
None	10
Chronic Illness	1
Physically Handicapped	1
Mental Retardation	1
Emotional Disturbance	1
Behavior Problems	2
Premature Birth	2
Multiple Birth	0
Involved Juvenile Court	0
School Related Problem	1
Battered Child Syndrome	0
Drug Addiction/Substance Abuse	2
Fetal Alcohol Syndrome	0
Failure to Thrive	0
Attn. Deficit Disorder/Attn. Deficit Hyp. Disorder	1
Total	22

**All statistics are listed by child. May list more than one item for each individual.*

State of Indiana
Family and Social Services Administration

CHILD NEGLECT FATALITIES
FATHER AND MOTHER STRESS FACTORS
FOR STATE FISCAL YEAR 2003

Father's Stress Factors*

SFY 03	
Unknown	7
Emotionally Disturbed	0
Learning Disabled	0
Other addictive condition	0
Caring for Special Needs Child	0
Incarcerated	1
None	3
Alcoholism	0
Drug Dependency	2
Physical Health Problems	0
Mental Health Problems	0
Family Discord/Marital Problems	2
Pregnancy/new child	2
Heavy Child Care Responsibility	2
Parental Mental Retardation	0
Authoritarian Method/Discip.	0
Lack Parenting Skills	2
Spouse Abuse/Family Violence	0
Poor Money Management	1
Insufficient Income	1
Inadequate Housing	0
Recent Relocation	0
Social Isolation	0
Language Problem	0
Unstable Living Conditions	0
Job Related Problems	0
Abused/Neglected as Children	1
Domestic Violence	0
Visual/hearing Problems	0
Physically Disabled	0
Total	24

Mother's Stress Factors*

2003	
Unknown	1
Emotionally Disturbed	0
Learning Disabled	0
Other addictive condition	0
Caring for Special Needs Child	1
Incarcerated	0
None	3
Alcoholism	1
Drug Dependency	3
Physical Health Problems	0
Mental Health Problems	0
Family Discord/Marital Problems	4
Pregnancy/new child	4
Heavy Child Care Responsibility	8
Parental Mental Retardation	0
Authoritarian Method/Discip.	0
Lack Parenting Skills	9
Spouse Abuse/Family Violence	0
Poor Money Management	1
Insufficient Income	1
Inadequate Housing	2
Recent Relocation	1
Social Isolation	0
Language Problem	0
Unstable Living Conditions	1
Job Related Problems	0
Abused/Neglected as Children	2
Domestic Violence	0
Visual/hearing Problems	0
Physically Disabled	0
Total	42

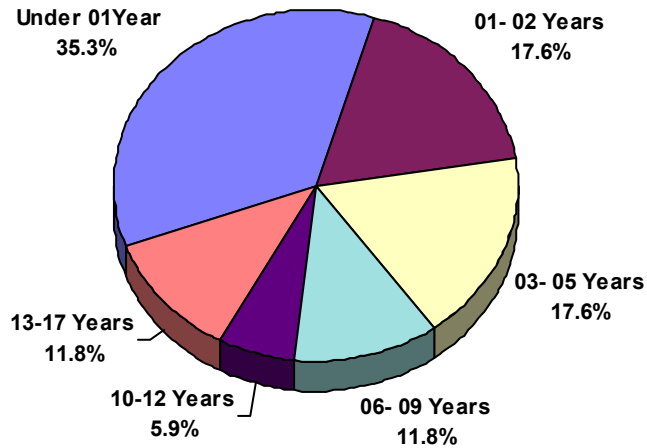
**All statistics are listed by child, may count one parent twice if two children died. May list more than one item for each parent. Stress factors may be reported for a primary caretaker if the biological parent is not living in the home.*

Prepared by:
Family and Social Services Administration
Division of Family and Children
Bureau of Program Evaluation
Thursday, December 18, 2003

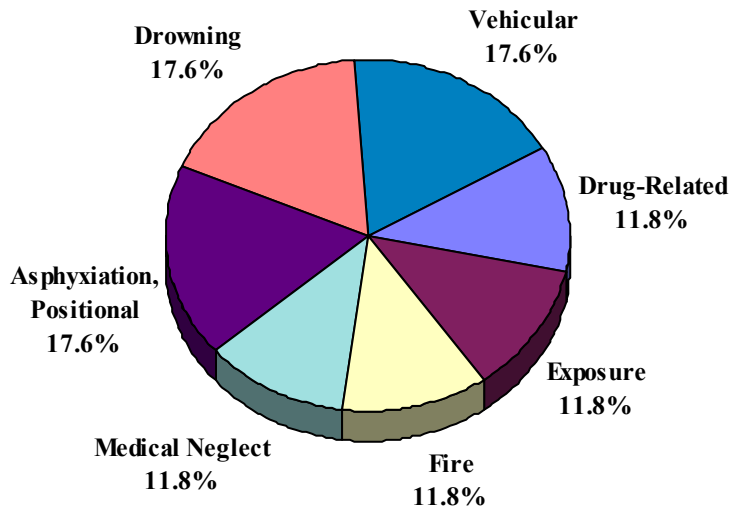
Source:
Bureau Family Protection Preservation
Child Fatality Review Reports

State of Indiana
 Family and Social Services Administration
CHILD NEGLECT FATALITIES

**STATE FISCAL YEAR 2003 NEGLECT FATALITIES
 BY AGE OF CHILD**



**STATE FISCAL YEAR 2003 NEGLECT FATALITIES
 BY CAUSE OF DEATH**

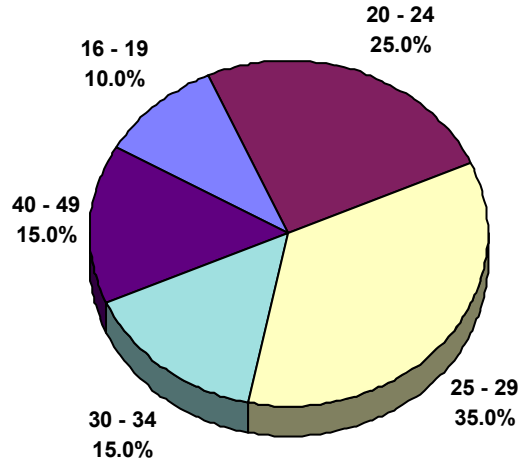


Prepared by:
 Family and Social Services Administration
 Division of Family and Children
 Bureau of Program Evaluation
 Thursday, December 18, 2003

Source:
 Bureau Family Protection Preservation
 Child Fatality Review Reports

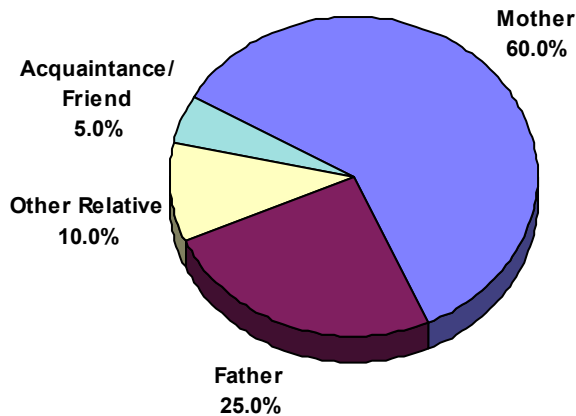
State of Indiana
Family and Social Services Administration
CHILD NEGLECT FATALITIES

**STATE FISCAL YEAR 2003 NEGLECT FATALITIES
BY AGE OF PERPETRATOR***



**May list more than one perpetrator for each fatality*

**STATE FISCAL YEAR 2003 NEGLECT FATALITIES
BY PERPETRATOR**



**May list more than one perpetrator for each fatality*

State of Indiana
Family and Social Services Administration
CHILD NEGLECT FATALITIES

This page left intentionally blank

Prepared by:
Family and Social Services Administration
Division of Family and Children
Bureau of Program Evaluation
Thursday, December 18, 2003

Source:
Bureau Family Protection Preservation
Child Fatality Review Reports

**State of Indiana
Family and Social Services Administration**

**RISK FACTORS AND PREVENTION ACTIVITIES FOR ALL CHILD FATALITIES
FOR STATE FISCAL YEAR 2003**

Primary Risk Factors Involved

SFY 03	
Behavioral	23
Economic	1
Environmental	4
Drug/Alcohol	14
Product	2
Social	3
Medical	3
Other	1
Total	51

Lead Organization for Prevention Activities

SFY 03	
Not Reported	1
Health Department	16
Social Services	5
Police, etc.	7
Mental Health	18
Local Comm Group	1
DFC	3
Total	51

Risk Factors Identified In Family Prior to Death

SFY 03	
Yes	22
No	29
Total	51

Risk Factors Identified in Community Prior to Death

SFY 03	
Yes	36
No	15
Total	51

Prevention Activities Proposed Since Death*

SFY 03	
Legislation, Law, Ordinance	1
Community Safety Project	2
Educational Activities in Media	21
New Services	1
Other Programs/Activities	4
No Change	22
Total	51

Prevention Activities Occurred Since Death*

SFY 03	
Community Safety Project	1
Educational Activities in Media	21
New Services	1
Changes in Agency Practice	1
Other Programs/Activities	4
No Change	23
Total	51

**May list more than one prevention activity for each fatality*

**May list more than one prevention activity for each fatality*

Drug/ Alcohol Involvement

SFY 03	
Abuse Fatalities	6
Neglect Fatalities	8
Total	14

**State of Indiana
Family and Social Services Administration**

**INVESTIGATION STATISTICS OF ALL CHILD FATALITIES
FOR STATE FISCAL YEAR 2003**

	SFY 03		
	ABUSE	NEGLECT	TOTAL
Total Child Fatalities	34	17	51
Coroner cases	34	15	49
% of Total	100.0%	88.2%	96.1%
Autopsies performed	34	14	48
% of Total	100.0%	82.4%	94.1%
Scene was investigated by Coroner	20	8	28
% of Total	58.8%	47.1%	54.9%
Scene was investigated by Law Enforcement	31	16	47
% of Total	91.2%	94.1%	92.2%
Scene was investigated by Fire Investigator	1	4	5
% of Total	2.9%	23.5%	9.8%
Emergency Medical Services was on scene	19	9	28
% of Total	55.9%	52.9%	54.9%
Scene was investigated by Other	3	0	3
% of Total	8.8%	0.0%	5.9%
Prior Substantiated CPS Investigations	6	5	11
% of Total	17.6%	29.4%	21.6%
1 Prior	4	2	6
2 Prior	1	2	3
3 Prior	0	1	1
4 Prior	1	0	1
5 Prior	0	0	0
6 Prior or more	0	0	0
Number of times not available	0	0	0

Prepared by:
Family and Social Services Administration
Division of Family and Children
Bureau of Program Evaluation
Thursday, December 18, 2003

Source:
Bureau Family Protection Preservation
Child Fatality Review Reports

State of Indiana
Family and Social Services Administration
PRIMARY CAUSE OF DEATH STATISTICS OF ALL CHILD FATALITIES
FOR STATE FISCAL YEAR 2003

	SFY 03		
	ABUSE	NEGLECT	TOTAL
Total Child Fatalities	34	17	51
Asphyxiation, Abuse	7	0	7
<i>% of deaths from abuse or neglect</i>	<i>20.6%</i>	<i>0.0%</i>	<i>13.7%</i>
Asphyxiation, Positional	1	3	4
<i>% of deaths from abuse or neglect</i>	<i>2.9%</i>	<i>17.6%</i>	<i>7.8%</i>
Drowning	2	3	5
<i>% of deaths from abuse or neglect</i>	<i>5.9%</i>	<i>17.6%</i>	<i>9.8%</i>
Drug-Related	0	2	2
<i>% of deaths from abuse or neglect</i>	<i>0.0%</i>	<i>11.8%</i>	<i>3.9%</i>
Exposure	0	2	2
<i>% of deaths from abuse or neglect</i>	<i>0.0%</i>	<i>11.8%</i>	<i>3.9%</i>
Fire	0	2	2
<i>% of deaths from abuse or neglect</i>	<i>0.0%</i>	<i>11.8%</i>	<i>3.9%</i>
Gun-Related	5	0	5
<i>% of deaths from abuse or neglect</i>	<i>14.7%</i>	<i>0.0%</i>	<i>9.8%</i>
<i>Accidental</i>	<i>0</i>	<i>0</i>	<i>0</i>
<i>Homicide</i>	<i>0</i>	<i>0</i>	<i>0</i>
<i>Murder- Suicide</i>	<i>5</i>	<i>0</i>	<i>5</i>
<i>Murder-Attempted Suicide</i>	<i>0</i>	<i>0</i>	<i>0</i>
<i>Suicide</i>	<i>0</i>	<i>0</i>	<i>0</i>
<i>Undetermined</i>	<i>0</i>	<i>0</i>	<i>0</i>
Health Endangering/ Lack of Supervision	0	0	0
<i>% of deaths from abuse or neglect</i>	<i>0.0%</i>	<i>0.0%</i>	<i>0.0%</i>
Medical Neglect	0	2	2
<i>% of deaths from abuse or neglect</i>	<i>0.0%</i>	<i>11.8%</i>	<i>3.9%</i>
Physical Abuse/ Beating	10	0	10
<i>% of deaths from abuse or neglect</i>	<i>29.4%</i>	<i>0.0%</i>	<i>19.6%</i>
Poisoning	1	0	1
<i>% of deaths from abuse or neglect</i>	<i>2.9%</i>	<i>0.0%</i>	<i>2.0%</i>
Shaken Baby Syndrome	8	0	8
<i>% of deaths from abuse or neglect</i>	<i>23.5%</i>	<i>0.0%</i>	<i>15.7%</i>
Undetermined	0	0	0
<i>% of deaths from abuse or neglect</i>	<i>0.0%</i>	<i>0.0%</i>	<i>0.0%</i>
Unknown	0	0	0
<i>% of deaths from abuse or neglect</i>	<i>0.0%</i>	<i>0.0%</i>	<i>0.0%</i>
Vehicular	0	3	3
<i>% of deaths from abuse or neglect</i>	<i>0.0%</i>	<i>17.6%</i>	<i>5.9%</i>

Prepared by:
Family and Social Services Administration
Division of Family and Children
Bureau of Program Evaluation
Thursday, December 18, 2003

Source:
Bureau Family Protection Preservation
Child Fatality Review Reports