

100 *plus*

THINGS TO DO

in Southwest Montana

– 2014 –



Visit, Shop, Relax, Enjoy...

ANACONDA

35TH ANNUAL ART IN THE WASHOE PARK IN ANACONDA!
SPONSORED BY COPPER VILLAGE ART MUSEUM

Featuring new bands including the Bop a Dips on Saturday.
July 18, 19, 20

HOURS | Friday- Noon to 10:00 P.M.
Saturday – 10:00 A.M. TO 9:30 P.M.
Sunday 11:00 A.M. to 4:00 P.M.

80 Art and Craft Booths | 20 Food Vendors

BEST CUSTOMERS

BEST PRODUCTS

BEST PRICE!

Dee Motor Co.

1200 E. Commercial • Anaconda
406.563.5225



Great Golf under the Big Sky!

9 holes • 7 days week
Sunrise to Sunset • Carts, driving range, bar, snack bar and Banquet room (available for rent)

ANACONDA COUNTRY CLUB & GOLF COURSE
1 Country Club Ln, Anaconda, MT • (406) 797-3920



ATM's Available at both of our locations!

Butte

1760 Harrison Ave.
406.782.8337

Anaconda
1035 W. Park
406.563.8484

Member N.C.U.A. Deposits insured to \$250,000. Equal Opportunity Lender.

SOUTHWEST MONTANA COMMUNITY FEDERAL CREDIT UNION

Fine Dining in Beautiful Anaconda.

Barclay II

SUPPER CLUB & LOUNGE
1300 E. COMMERCIAL, ANACONDA
406.563.5541



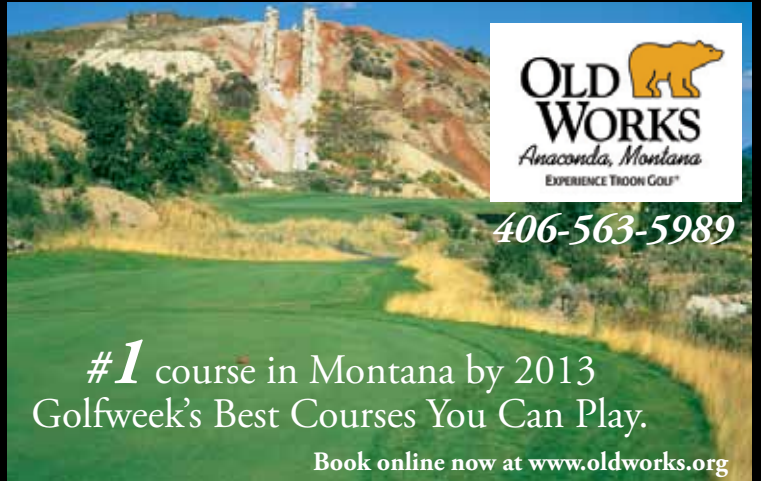
We are a full service facility featuring new Buick and GMC vehicles and a great selection of pre owned inventory.

Hours: Sales: Mon-Fri 9-5:30, Sat 9-4
Service: Mon-Fri 8-5:30

Come See Us Today!

BUICK GMC Discovery Buick GMC

800 East Park Ave • Anaconda, MT 59711
406-563-5256
www.discoverybuickgmc.com



OLD WORKS
Anaconda, Montana
EXPERIENCE TROON GOLF®

406-563-5989

#1 course in Montana by 2013
Golfweek's Best Courses You Can Play.

Book online now at www.oldworks.org

It's all here ... in southwest Montana

Visit southwest Montana this summer, where the land is rich with beauty in its scenery, wildlife and cultural events.

Butte has earned the title Montana's Festival City, with the Montana Folk Festival in its seventh year this summer, Evel Knievel Days, the An Rí Rá Irish Festival and the Freedom Festival Fourth of July parade and fireworks.

In the Mining City, visitors are swept away by its rich mining history, with walking tours, magnificent buildings throughout the Historic District and museums that offer a glimpse into Butte's rough and rowdy past.

In the beautiful mountains and river valleys of southwest Montana, visitors will find hiking and biking trails, blue-ribbon trout streams and rocks to climb. In the towns — from Deer Lodge to Dillon — there's everything from theater to rodeos, golf and some of the best restaurants around.

What more could you ask for?

INSIDE

Butte	3-13
Anaconda	14-16
Deer Lodge, Powell Co.	17-19
Philipsburg, Granite Co.	20-21
Dillon, Beaverhead Co.	22-24
Whitehall, Jefferson Co.	25-26
Lewis & Clark Caverns	26
T. Bridges, Ruby Valley	27
Virginia City	28-30

Welcome to Butte Montana's Festival City

What to see

ANSELMO MINE YARD

Started in 1887, Butte's best preserved mine yard is in almost the same condition as when it closed in 1959. Cars of the Butte, Anaconda & Pacific Railway are also inside the fence. Location: North Excelsior and Caledonia streets.

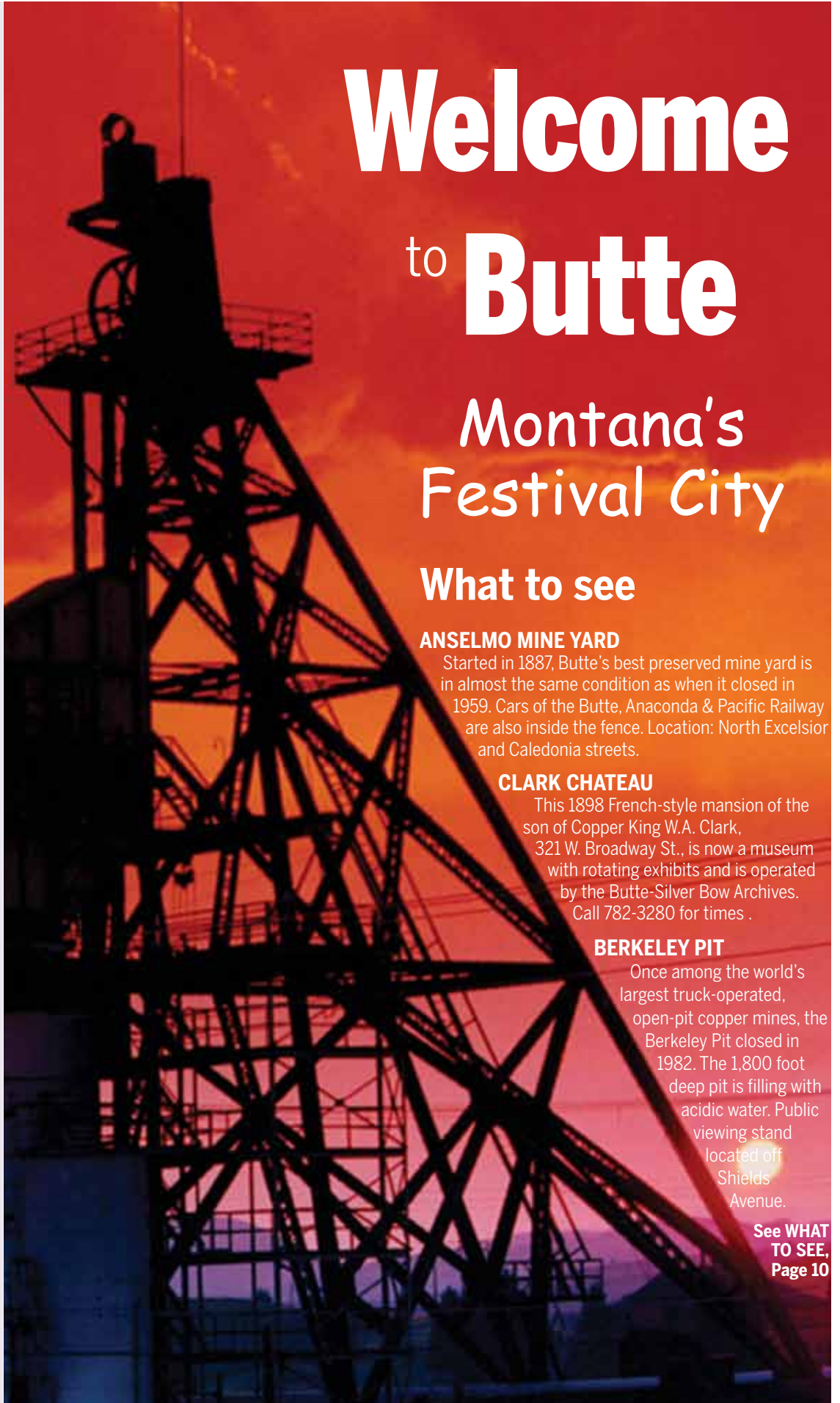
CLARK CHATEAU

This 1898 French-style mansion of the son of Copper King W.A. Clark, 321 W. Broadway St., is now a museum with rotating exhibits and is operated by the Butte-Silver Bow Archives. Call 782-3280 for times .

BERKELEY PIT

Once among the world's largest truck-operated, open-pit copper mines, the Berkeley Pit closed in 1982. The 1,800 foot deep pit is filling with acidic water. Public viewing stand located off Shields Avenue.

See **WHAT TO SEE, Page 10**



BUTTE



RIDERS DANGLE from their bikes during a free style show in last year's Evel Knievel Days.

Walter Hinick /
The Montana Standard

Calendar of events

JUNE

6— Uptown Art Walk from 5 to 9 p.m., on the first Friday of the month, paintings, photography, jewelry, drawings, handmade crafts, ceramics, batik and more at multiple locations in Uptown Butte, call 406-497-6464 or visit uptownbutteartwalk.org/.

7— Butte Farmers Market is 8:30-1 p.m. Saturdays through Oct. 4, on west Main Street, bedding plants, eggs, chickens, fruits and vegetables, baked goods, sausages, flowers, salsa, arts and crafts, call Mainstreet Uptown Butte at 406-497-6464 or email geverett@montana.com.

14— Miners Union Day Celebration, 1-3 p.m., World Museum of Mining, free admission, reduced fees for underground tour, adults \$8, seniors (65 and older) and students \$5, kids \$3, food and entertainment for the family, 406-723-7211. Butte Farmers Market, 8:30-1 p.m., West Park Street, 406-497-6464

16 - 27— The Dennis and Phyllis Washington Summer Camp will be weekdays from 10 a.m. to 3 p.m. at The Episcopal Church of St. Mary and St. John. Cost is \$250.00. Focuses on a variety of performing arts skills through scenework, monologues, dance and a performance at the end.

19— Behind the Scenes, 5-7 p.m., World Museum of Mining, find out what is behind the glass windows in Hell Roarin' Gulch. Bring your camera to explore exhibits from the inside out, \$20 per person, reservations recommended, 723-7211.

21— Butte Farmers Market, 8:30 to 1 p.m., West Park Street, 406-497-6464

21-22— Junior Rodeo at Butte Vigilante Saddle and Rodeo Club

26— Butte Center for the Performing Arts Summer Fun Dance Party Fundraiser at Butte Country Club, entertainment by The Diamonds, picnic dinner, 6:30-10 p.m., 406-723-3602.

28— Butte Farmers Market, 8:30-1 p.m., West Park Street, 406-497-6464

JULY

1-3— Freedom Festival, Town Pump fireworks display on Big Butte, at dusk



Montana Standard file photo

BUTTE'S TIERNAN IRISH DANCERS perform during last year's An Ri Ra Montana Irish Festival in Uptown Butte.

3-5— Field of Honor display of 1,000 flags honoring American heroes, near Belmont Mine (Mercury and Shields). Open noon to 10 p.m. Thursday;

See CALENDAR, Page 5

Calendar ...

Continued from Page 4

8 a.m. to 10 p.m. Friday; and 8 a.m. to 5 p.m. Saturday. For details go to www.ButteFieldofHonor.Org.

4 — Fourth of July Parade on Harrison Avenue. Uptown Art Walk from 5 to 9 p.m., paintings, photography, jewelry, drawings, handmade crafts, ceramics, batik and more at multiple locations in Uptown Butte, call 497-6464 or visit uptownbutteartwalk.org/.

5 — Bull-a-Rama, 30 riders will buck out 30 bulls, top 10 go for prizes, mutton busting for kids, bull-poker for adults, at rodeo grounds, 406-494-6700. Butte Farmers Market, 8:30-1 p.m., West Park Street, 497-6464

9-13 — Good Sam Club, Montana State Samboree, RVs will encamp at Butte Civic Center 406-549-9411

11 — Free Anselmo Mine Tour, 1-3 p.m. at the Anselmo Mine Yard. Former miners tell about station tendering, rope men's work, the dries, the electric train locomotives and more. Call World Museum of Mining, 406-723-7211.

11-13 — The free Montana Folk Festival will feature hundreds of performers and craftspeople with music and dance performances on six stages, workshops, children's activities, folklife demonstrations, festival marketplaces and ethnic and regional foods. The entertainment types include Piedmont flatpickers, rock-a-billy, Peruvian dance troupe, Kurdish tanbur music, Laotian traditional, Southern Appalachian storytelling and banjo, klezmer music and dancing, reggae, Cajun, merengue, blues, gospel, mariachi, Native American drummers and singers, soul music, Canadian Celtic, New Orleans brass band jazz, bluegrass, old time, West African, and Quebecois. Call 406-497-6464, visit www.montanafolkfestival.com or www.facebook.com/mtfolkfest.

12 — Butte Farmers Market, 8:30 to 1 p.m., West Park Street, 406-497-6464

17 — Behind the Scenes, 5 to 7 p.m., World Museum of Mining, find out what is behind the glass windows in Hell Roarin' Gulch. Bring your camera, \$20 per person, 406-723-7211.

19 — Montana Lineman's Rodeo at Butte Rodeo Grounds, 8 a.m. to 2 p.m., open to the public. Butte Farmers Market, 8:30-1 p.m., West Park Street, 406-497-6464.

24-26 — Evel Knievel Days, daredevil stunts, visit evelknieveldays.org/schedule-of-events/

26 — Butte 100 mountain bike race, 50- and 100-mile versions, atop the Continental Divide just outside of Butte, 250 racers. Butte Farmers Market, 8:30-1 p.m., West Park Street, 406-497-6464.

31-Aug. 2 — Butte-Silver Bow County Fair, Butte Civic Center, arts, crafts, food booths, farm animals, rodeo, music, exhibits, horse show, concert, concessions and open class judging including horticulture, foods, photography and fine art, 4-H livestock and other projects, 9 a.m.-9 p.m., 406-491-1674

AUGUST

1 — Uptown Art Walk from 5 to 9 p.m., paintings, photography, jewelry, drawings, handmade crafts, ceramics, batik and more at multiple locations in Uptown Butte, call 406-497-6464 or visit uptownbutteartwalk.org/.

2 — The Color Dash 5k, fundraiser for the Butte Chamber of Commerce, dusted in color. Pick up packets at 8 a.m. dash starts at 10 a.m., go to www.thecolordash5k.com.

2 — Butte Farmers Market, 8:30 to 1 p.m., West Park Street

7 — Symphony Under the Stars at the Original Mineyard, movies begin at dusk (about 8:30/9 p.m.), come early for Butte Public Library programming, picnic, suggest a donation of \$10 a family. For details contact Julia Crain at <https://www.facebook.com/OutdoorMoviesTheOriginal>.

8-10 — An Ri Ra Montana Irish Festival celebrates Irish culture and heritage in Butte, Original Mine Yard, noon Friday to 4 p.m. Sunday, free admission. This family-oriented event offers lessons in language and culture, with Irish authors, musicians and dancers, workshops, lectures, documentaries and children's activities. Groups include Evans & Doherty, Rory Makem, Whiskey Asylum (Prodigals & Mickey Finns), Trinity Irish Dancers, The Elders,



Walter Hinick / The Montana Standard

MARSHALL FORD SWING BAND vocalist Emily Gimble and bass player Kristopher Wade harmonize during the opening performance at the Original at the Montana Folk Festival.

Dublin Gulch, Solas, and Tiernan Irish Dancers. Irish Mass on Sunday. 406-498-3983

8-9 — Butte Vigilante Rodeo, 6354 Albany Ave., 7 p.m. nightly, Northern Rodeo Association provides professional riders in bronc, bull, and bareback

See **CALENDAR**, Page 6

**Truzzolino Pasties
and Party Pasties**

Baked Fresh Daily

Tamales & Tamale Pies

FRESH OR FROZEN

1921 Harrison Ave., Butte, • 782-0374 • M-F 8-5





Walter Hinick / The Montana Standard

NOBODY THROWS A PARADE LIKE BUTTE ... and nobody celebrates the Fourth of July like Butte. Above, the Montana Resources float is one of many colorful contributions to last year's Freedom Fest Fourth of July Parade.

Calendar ...

Continued from Page 5

riding, barrel racing, calf roping, plus lots of clowns, 406-494-3002.

9 — An Ri Ra Fun Run, 1-mile fun run-walk, 5k and 10k runs, start and end at Butte Silver Bow Chamber of Commerce building, 1000 George St., Butte. Registration fee: \$25 adult, \$15 age 18 and younger, \$30 adult after 6. (no race day registration). Runners will be bused to the start of the 5k/10k courses. Call to starting line is 8:30 a.m. for 1 mile, and 9:30 a.m. for 5k/10k; awards ceremony is 11 a.m. Register online at mtgaelic.org or call 406-782-2235.

9 — Butte Farmers Market, 8:30 to 1 p.m., West Park Street, 406-497-6464

14 — Outdoor movies at Original Mineyard, movies begin at dusk (about 8:30/9 p.m.), come early for Butte Public Library programming, picnic, suggest a donation of \$10 a family. For details contact Julia Crain at <https://www.facebook.com/OutdoorMoviesTheOriginal>.

16 — Family Day Celebration, World Museum of Mining, free admission, reduced fees for underground tour: adults \$8, seniors (65 & older) and students \$5; kids \$3, 723-7211.

16 — Butte Farmers Market, 8:30 to 1 p.m., West Park Street, 406-497-6464

21 — Outdoor movies at Original Mineyard

21 — Behind the Scenes, 5-7 p.m., World Museum of Mining, find out what

See CALENDAR, Page 7

Our Service Makes the Difference ...YESTERDAY, TODAY AND TOMORROW



Gear up for spring & summer with car care values from Mile High CJD service department.

Call Today to Schedule
On Harrison Ave. Next to Wal-Mart

406.533.3634

www.MileHighCJD.com



TAKE HOME A PIECE OF COPPER COUNTRY!

- Butte Souvenirs
- T-Shirts
- Copper Jewelry
- Turquoise
- Silver
- Kitchenware
- Toys
- Cookbooks
- Moscow Mule Mugs
- Gift Baskets



Great Selection of gift ideas & More
ANYTHING & EVERYTHING IN COPPER
Visit one of our Stores!



BUTTE COPPER CO.
3015 Harrison Ave
And Berkley Pit Viewing Stand
494-2070

Calendar ...

Continued from Page 6

is behind the glass windows in Hell Roarin' Gulch. Bring your camera, \$20 per person, reservations recommended, 406-723-7211.

23 — Butte Farmers Market, 8:30 to 1 p.m., West Park Street, 406-497-6464

28 — Outdoor movies at Original Mineyard, 8:30/9 p.m., suggest a donation of \$10 a family. For details contact Julia Crain at

<https://www.facebook.com/OutdoorMoviesTheOriginal>.

29 — Montana Shakespeare in the Parks performs "As You Like It" at 6 p.m. at the Original Mineyard with sets and costumes inspired by 1917 Butte.

30 — Butte Farmers Market, 8:30 to 1 p.m., West Park Street, 406-497-6464

SEPTEMBER

1 — Southwest Youth Rodeo Finals at Butte Vigilante Saddle and Rodeo Club

5 — Uptown Art Walk from 5 to 9 p.m., paintings, photography, jewelry, drawings, handmade crafts, ceramics, batik and more at multiple location in Uptown Butte, call 497-6464 or visit uptownbutteartwalk.org/. Special outdoor movie event at Original Mine Yard.

5-7 — Montana Pioneer and Classic Auto Club Fall Tour, some 900 members statewide hold two tours each year featuring a Friday evening 'gas-light' parade, and a car tour and judging on Saturday with about 60 cars. Cars on display Friday and Saturday evening, 406-797-3485.

6 — Butte Farmers Market, 8:30 to 1 p.m., West Park Street, 406-497-6464

12-13 — North American Indian Alliance Powwow, Butte Civic Center, dancing, food and music, vendors with bead work and traditional items. Hours are 5 p.m. to midnight Friday, and 7:30 a.m. to midnight Saturday, 406-782-0461.

13 — Butte Farmers Market, 8:30 to 1 p.m., West Park Street, 406-497-6464



Walter Hinick / The Montana Standard

DAVID FRANKFORTER of Butte displays egrets made from PVC pipes on opening day of the 2013 Farmer's Market in Butte.

20 — The 6th Annual Butte-toberfest takes place in the Korn lot on West Park and Dakota Streets just below the Quarry Brewing Company. For details as the develop, visit www.facebook.com/ButteToberfest.

20 — Butte Farmers Market, 8:30 to 1 p.m., West Park Street, 406-497-6464

27 — Butte Farmers Market, 8:30 to 1 p.m., West Park Street, 406-497-6464

OCTOBER

3 — Uptown Art Walk from 5 to 9 p.m., paintings, photography, jewelry, drawings, handmade crafts, ceramics, batik and more at multiple locations in Uptown Butte, call 497-6464 or visit uptownbutteartwalk.org/.

4 — Butte Farmers Market, 8:30 to 1 p.m., West Park Street, 406-497-6464

31 — Treat Street, 2-5 p.m., World Museum of Mining, free trick-or-treating through the haunted streets of Hell Roarin' Gulch, 406-723-7211.



2011 Top 100 Dealer



Matt & Kim Krsul

MATT KRSUL'S

TwoWheez

THE PASSION CONTINUES

60+ YEARS
EXPERIENCE

Motorcycles

ATVsUTVs**

Snowmobiles

SALES • SERVICE • PARTS • ACCESSORIES



Our Service Work
Guaranteed

TIRES • JERSEYS • PANTS • GLOVES • HELMETS
PROTECTIVE GEAR • BOOTS

2905 Harrison Ave., Butte, MT 59701

406-221-7008

Monday - Friday 9AM - 6PM Saturday 9AM - 1PM

Harvest Church Butte Campus

Join us Sundays at 11:00 am

Currently meeting at
Butte High School Auditorium
401 S Wyoming St.

harvestchurch.tv
406.259.5648

UPTOWN BUTTE

Stop Up
and see all we have to offer!

GREAT FOOD
—Gamer's GOT IT—

BREAKFAST - LUNCH - CATERING

Gamer's Cafe & Casino

15 W Park - 723-5453

An Rí Rá Montana IRISH FESTIVAL

HISTORIC UPTOWN BUTTE
FREE AT "THE ORIGINAL MINE YARD"
AUGUST 8TH - 10TH, 2014



www.mtgaelic.org

WORLD-CLASS IRISH ENTERTAINMENT,
CULTURAL WORKSHOPS AND ACTIVITIES

Visit our website or call Brendan
at 406-498-3983

Everything For The Wine Enthusiast



Great Gift Ideas! -

Full Selection of Wines
Butte Photos
Decorative Glasses
Family Portraits
Gift Baskets
Jewelry & Pendants

Wine Seller

43 W. Park St., Butte, MT | (406)494-5130



WELCOME TO BUTTE!



ENJOY ALL
OUR CITY HAS
TO OFFER!

FOR ALL OF YOUR FURNITURE, APPLIANCE AND ELECTRONICS NEEDS.

STEELE'S
FURNITURE • TV • APPLIANCE

BUTTE: 800 S. Wyoming • 782-4231 | DEER LODGE: 417 Main • 846-3311 • WWW.STEELESFURNITURE.COM

Where A Friend
Is Always Waiting

**Ice Cold Beer
And Mouth
Watering
Pizza**

**Families
Welcome**

**BAR &
RESTAURANT**



521 W. Park
723-9885

Welcome to Butte!

METALS SPORTS BAR & GRILL



8 W. Park Street, BUTTE • 406-782-5534

- 31 Big Screen TV's
- See the Butte Legends in our "Coach's Corner"
- Great Lunch and Dinner Menu
Prepared by Chef Tyler Triniman, a Butte native!
- Dine in Our Historic Vault
- Adult Gaming Available
- Jr. Varsity Room - Fun Game Room for the Kids
- "Team Room" Available for Private Parties
- See Original Architecture Dating Back to 1906
- Original Marble Teller's Line

INSTY-PRINTS®

**BUSINESS PRINTING & DIGITAL SERVICES
of BUTTE**

For all your printing needs...
great quality, great prices, great service!

BUTTE'S BEST BUSINESS PRINTER

120 West Park St • Historic Uptown Butte
PHONE 406-723-3363 • FAX 406-782-2207 • instybutte@bresnan.net

UPTOWN BUTTE

*Stop Up
and see all we have to offer!*

All year around at
Cavanaugh's County Celtic

- T-Shirts & Sweatshirts
- Irish Music
- Jewelry
- Collectibles
- Children's Clothing
- Great Selection of Wedding & Baptism Accessories
- And Much, Much More!

We have a great selection of Butte Irish Collectables!!



CAVANAUGH'S

County Celtic And Beyond

Where Ireland meets the Rockies

131 W. Park, Uptown Butte • 723-1183 • www.countyceltic.com • countyceltic@yahoo.com

Bob & Sandy's



The B S Cafe'

Order Pasties
In Advance
For Pick Up

Delivery
Service
Available

Full Breakfast / Lunch
- Pasty's On Wednesday
Homemade Soups & Desserts
Catering

6-3pm M-F
6-2pm Sat-Sun

782-1513
26 N. Main



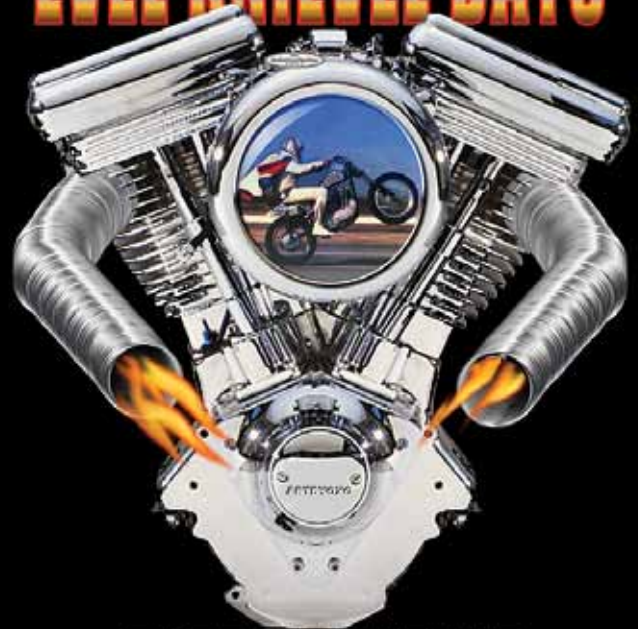
*While uptown check out
our gourmet Pizza as well
as our homeade soups,
salads and desserts.
Espresso, Beer, and Wine
are also available.
Enjoy your food on our
enclosed deck to enjoy the
wonderful scenic view!*

The Broadway Cafe

302 E Broadway St, Butte • (406) 723-8711
Reg. Hours: M-Thurs 11am-9pm Friday 11am-10pm
Sat 12pm-9pm • Sun Closed



The Richest Hill on Earth
Proudly Presents the 13th Annual
EVEL KNEVEL DAYS



BUTTE, MONTANA

JULY 24, 25 & 26, 2014

www.evelknieveldays.org

What to see ...

Continued from Page 3

Fee: \$2. Time: daylight hours. Call: 723-4301.

VENUS RISING ESPRESSO HOUSE

The coffee house, 128 W. Granite St., with an art gallery, is operated by the Butte Silver Bow Arts Foundation and encourages creativity in adults and young people. Hours: 7:30 a.m.-4:30 p.m. Monday-Friday, 11 a.m. to 3 p.m. Saturday, 406-723-1150.

BUTTE-SILVER BOW CHAMBER OF COMMERCE, VISITOR & TRANSPORTATION CENTER & GIFT SHOP

Location: 1000 George St. Hours: 8 a.m. to 8 p.m. daily, 10-4 p.m. Sunday. Phone: 406-723-3177, 800-735-6814.

GRANITE MOUNTAIN-SPECULATOR MINE FIRE MEMORIAL

A memorial overlooking the sites of the mines where hard rock mining's greatest disaster took place in 1917 with a loss of 168 lives. Turn east at the directional sign at the top of Main Street, north of the St. Lawrence O'Toole Church.

MAI WAH MUSEUM

Preserves the heritage of Asians in the mining West with an extensive collection of artifacts and interpretation of the culture of Butte's Asian community. Location: 17 W. Mercury St. Time: 10-4 p.m., Tuesday through Saturday, June-September. Phone: 723-3231, www.maiwah.org

DUMAS BROTHEL MUSEUM

America's longest running house of prostitution (1890-1982) at 45 E. Mercury St., is now a museum, open from 10 a.m. to 4 p.m. Tuesday through Saturday. Phone: 406-299-2702

TROLLEY TOURS ON OLD NUMBER 1

Tour historic Butte on a trolley. Tours (90 minutes) start at the Butte-Silver Bow Chamber of Commerce, 1000 George St., Monday through Saturday at 10:30 a.m., 1 p.m. and 3:30 p.m. Sunday tours are at 10:30 a.m. and 1 p.m. Call Stephanie at 406-723-3177. Walking paths start at the chamber office and maps of the Copperway Walking Trails are available along with tourist information.

BUTTE-SILVER BOW PUBLIC ARCHIVES

A collection of government records, photos, manuscripts, labor and business collections, newspapers, some dating from the 1860s to 1990. The archives, 17 W. Quartz St., is open from 9 a.m. to 5 p.m. weekdays. Call 406-782-3280 for details.

ST. LAWRENCE O'TOOLE CHURCH

The church, 1308 N. Main St., was built in 1897 from donations of miners and families living on the hill at a cost of \$25,000. The church is open by appointment, 406-782-9220, 406-782-4694.

OUR LADY OF THE ROCKIES

This statue overlooks Butte from the top of the East Ridge. Gift shop and offices are located at the Butte Plaza Mall, 3100 Harrison Ave. The two-hour bus tour to the statue leaves from the shop in the mall at 10 a.m. and 2 p.m. Monday through Saturday, and 11 a.m. and 2 p.m. Sunday. The bus tour is \$15 adults, \$13 seniors 55 and older, \$11 ages 13-17, \$7 ages 5-12, and \$2 ages 4 and under. For details call 406-782-1221 or 800-800-5239.

MONTANA TECH MINERAL MUSEUM

About 1,300 specimens are exhibited including a 27.5 oz. gold nugget found south of Butte. A display of the Earthquake Studies office is in the



Walter Hinick / The Montana Standard

TOM GORDON, GREAT-GRANDSON OF CON O'NEILL, one of the 168 victims of the 1917 Granite Mountain-Speculator mine fire, and his son Colby Shea are pictured at the Granite Mountain Memorial in this file photo.

museum and records real time seismic data. Location: Montana Tech Campus. Time: 9-5 p.m. daily, 406-496-4414.

PICCADILLY MUSEUM OF TRANSPORTATION MEMORABILIA AND ADVERTISING ART

The museum, 20 W. Broadway St., celebrates the golden age of

See **WHAT TO SEE**, Page 11




**YOUR
JOB WELL DONE
AWAITS.**

**UP TO \$300
BONUS BUCKS**
on select models**

AS LOW AS 2.99%
FIXED APR FINANCING
for 36 months on approved credit*



Your Honda Awaits.

406.683.2205
201 E. Helena Street
Dillon, MT 59725

www.adventurecyclesled.com



FOURTRAX® RANCHER®

powersports.honda.com UTILITY ATVS ARE RECOMMENDED ONLY FOR RIDERS 16 YEARS OF AGE AND OLDER. BE A RESPONSIBLE RIDER. ALWAYS WEAR A HELMET, EYE PROTECTION AND PROTECTIVE CLOTHING, AND PLEASE RESPECT THE ENVIRONMENT. OBEY THE LAW AND READ YOUR OWNER'S MANUAL THOROUGHLY. *2.99% Fixed APR financing available for customers who qualify for super preferred credit tier for up to 36 months through Honda Financial Services. Payment example: 36 monthly payments of \$29.08 for each \$1,000 financed. Offer good on all new and unregistered ATV models. Not all buyers may qualify. Higher rates apply for buyers with lower credit ratings. Offer ends 6/30/14. **\$300 Bonus Bucks valid on 2013 and prior and \$200 Bonus Bucks valid on 2014 TRX420FA/FPA/FE/FPE/FM/FPM/TE/TM models. Bonus Bucks redeemable only for purchases at dealer on purchase date. No cash value. Non-transferable. Redemption value is not to exceed \$300. Offer ends 6/30/14. Check with participating Honda Dealers for complete details. FourTrax® and Rancher® are trademarks of Honda Motor Co., Ltd. ©2014 American Honda Motor Co., Inc. (4/14) 13-121

What to see ...

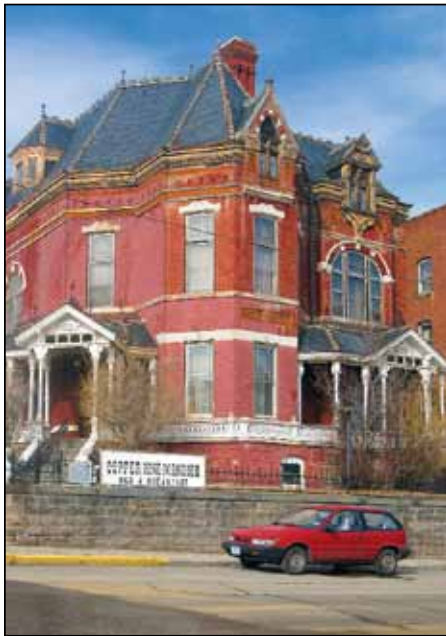
Continued from Page 10

motoring in America. Time: 10-5 p.m. Monday-Saturday, 406-723-3034.

WORLD MUSEUM OF MINING

Located at the Orphan Girl Mine, west of the Montana Tech Campus. This 33-acre museum contains a replica of an 1890s mining camp and walk-through display on mining. An underground tour is offered. It offers kids summer camps. Museum hours: 9-6 p.m. daily. Call 406-723-7211.

COPPER KING MANSION



COPPER KING MANSION

Built in 1884 for William A. Clark, this National Historic Site, with 32 rooms, is now a bed and breakfast. Tours begin on the hour from 9 to 4 p.m. Location: 219 W. Granite St. Call: 406-782-7580.

UPTOWN BUTTE ARTWALKS

The "phantom gallery" art walks are held from 5 to 9 p.m. the first Friday of the month through Oct. 3. Artists, both established ones and those who want their works to be seen for the first time in public, display their works for the evening if not the month. Upwards of 20 establishments provide spaces for artists to show and possibly sell their works.

For details call 406-497-6464 or uptownbutteartwalk.org/.

OLD BUTTE WALKING TOURS

Old Butte Historical Adventures conducts walking tours (no handicapped accommodations) of Uptown Butte buildings. The tours are strenuous with many stairs and high elevation.

■ Butte City Underground Tour - Roarin' 20s Rookwood Speakeasy, 1950s Hirbour Barber Shop, 1890 City Jail.

■ West Walking Tour - Dellinger Law Office with in-depth exploration of multiple levels inside and outside this ghost-ridden building, Silver Bow Club, County Court House (M-F only), Stephens Hotel.



Montana Standard file photo

OUR LADY OF THE ROCKIES statue stands atop the East Ridge overlooking Butte.

■ East Walking Tour - Finlen Hotel, Myra Brothel, Tony's Tin Shop, Cabbage Patch, Red-Light District, Chinatown, Metals Bank Building. All tours are about 2 hours long. Specialty tours are labor history, ethnic culture, BA&P walking trail, ghost town tours, and longer walks. For details go to Historic Guide Center, 117 N. Main St., Butte, 498-3424.

WORLD MUSEUM OF MINING



- Underground Mine Tour & Exhibit
- 100 Ft. High Steel Headframe
- 1890's Mining Town
- Miners Memorial Wall
- Mineral Exhibit
- Doll & Dollhouse Collection

155 MUSEUM WAY, BUTTE, MT
miningmuseum.org • 406-723-7211

"For the Finest in Pottery and Handmade Craft"

BASIN CREEK POTTERY & GALLERY

Call for hours!
406.225.3218

Ceramic artist Patrick Eckman has been producing his pottery and ceramic art in his studio in Butte for over 35 years. Stop in and see his latest work as well as a large selection of items from artists and craft people from Montana and beyond.

EXIT 156 off Interstate 15
 MAIN STREET, BASIN MONTANA 59611
www.basincreekpottery.com

SHOP & DINE Downtown Butte!



CHRISTINA'S COCINA CAFE

TEX-MEX CUISINE • STEAKS • SEAFOOD
BABY BACK RIBS • MARGARITAS

- Gold Star Award from the Health Department -
- Reader's Choice Award in 5 Categories -

Out of the way, but worth the find!

2201 Silver Bow Blvd. • Butte, MT • (406) 723-8444



THE RED PIANO

GIFTS & GALLERY

We're Not a Music Store, but We Do Have "Notable" Gifts for Every Occasion!
Home Décor - Original & Canvas Artwork - Handbags - Jewelry - Scarves
Unique "Butte" Souvenirs **STOP IN TODAY!**

Find us on Facebook! • www.facebook.com/redpianogifts
1440 Holmes Ave, Butte • (406) 299-3132 • Hours: Tues-Fri 10-5:30; Sat 10-4

Take Home A Touch of Montana



WE BUY ANTLERS!

PETE'S ANTLER ART
1005 Cobban St. In Butte - 782-8269
4 Blocks East of the KOA

Large & Small Items

- Cribbage Boards
- Candle Holders
- Wine Racks
- Wall Sconces
- Picture Frames
- Antler Key Chains
- Chandeliers
- New Wagon Wheel Decor
- New Elk Tooth & Antler Jewelry




GENUINE. MONTANA. EXPERIENCE.

HOT SPRINGS LODGING DINING GOLF SPA



Perkins RESTAURANT & BAKERY

BREAKFAST is just the BEGINNING™

IN HOUSE BAKERY
Pies • Muffins • Cookies Baked Freshly Daily

BUSES AND TOURS WELCOME!



2900 Harrison Ave, Butte • 406-494-2490



FAIRMONT

HOT SPRINGS RESORT

FairmontMontana.com | 800.332.3272



SHOP & DINE Downtown Butte!

Choice Beef - Seafood - Veal - Pork Chicken - Prime Rib

Includes Salami & cheese, garden salad, green peppers, sweet potato salad, pickled beets, green onions, homemade ravioli & spaghetti, french fries, bread sticks, & dessert.

Happy Hour Mon-Fri 5-7 - In our Lounge 1/2 Price Appetizers

Check out our Weekly Specials and Wine Selection at www.lydiassupperclub.com

Lydia's
Supper Club

"A Butte Tradition for 66 Years"

4915 Harrison Ave., Butte
494-2000

Dining Room:
Opens Every Evening at 5:30 p.m

ENJOY YOUR VISIT
AND WHILE DOWNTOWN
STOP BY TO
THE OASIS CASINO AND
RESTAURANT!

OASIS CUSTOMER APPRECIATION COUPON

Buy One Entree & 2 Beverages...

GET ONE ENTREE FREE Up to \$7.00

Please Only One Coupon Per Visit. Coupons maximum value off a meal is \$7.00.

Not valid with our \$3.99 specials. Coupon valid June 2, 2014 - June 30, 2014.



CASINO & RESTAURANT
2320 Amherst • 494-1272



www.buttechamber.org

Photography By: Kristina Larson

Daily Tours * Special Events * Historical Tours

Our trolley times are Monday thru Saturday
at 10:30, 1:00 and 3:30.

Sunday at 10:30 and 1:00pm.

Special tours can be arranged for
weddings and reunions.

Call Today To Reserve The Trolley
For Your Wedding Transportation!

(406)-723-3171



1000 George St. • Butte, MT 59701

Anaconda

Calendar of events

JUNE

3-28 — Irish Archives, on loan from Butte-Silver Bow Archives, goes on display at Copper Village Museum and Arts Center, 406-563-2422.

14-15 — Anaconda Bicycle Festival, “Pedal the Pintlers,” 8 a.m. Saturday from Washoe Park, 25-, 50- or 100-mile bike rides, first section to Georgetown Lake and then over Continental Divide by way of Mill Creek Pass. The “Turbo Twenty” provides riders with shuttle to Georgetown Lake, and then a downhill ride to Anaconda. The competitive “Disco Mountain Boogie” at Discovery Ski Area begins at 11:30 a.m. Sunday, is a NORBA mountain bike event featuring 21- 17- and 11-mile courses over routes in national forest. Call Sven’s Bike Shop, 406-563-7988.

29 — St. Timothy’s Summer Festival, Joy and Karin Gunderson, “Heavenly Harps,” 4 p.m.

JULY

1 - Aug. 1 — Artwork of Eileen Juntunen and Susan Malee goes on display at Copper Village Museum and Arts Center, 406-563-2422.

4 — Fun parade at noon at Georgetown Lake, 406-563-5052. Parade in Anaconda at 2 p.m. and fireworks display at dusk, Washoe Park.

10-13 — Goosetown Softball Tournament, Washoe Park and ball fields in town, 406-560-1197

13 — St. Timothy’s Summer Festival, Members of the Muir String Quartet and Guests, St. Timothy’s Chapel, near Georgetown Lake, 4 p.m., 888-407-4071

18-20 — Art in Washoe Park, 80 juried art and craft booths, professional music entertainment daily, ethnic foods, kids playground. Bring your lawn chair, noon to 8 p.m. Friday; 10 a.m. to 10 p.m. Saturday; 11 a.m. to 4:30 p.m. Sunday, 406-563-2422, www.coppervillageartcenter.com.

27 — St. Timothy’s Summer Festival, James Schlender on violin and Craig Hall on acoustic guitar, 4 p.m.

AUGUST

10 — Montana Shakespeare in the Parks: “As You Like It” follows its heroine Rosalind, as she is exiled from her uncle’s court. Disguising herself as a boy, she finds safety and eventually, love in the Forest of Arden. This production is set in 1917 Montana where Rosalind leaves the world of the Copper Kings and finds refuge in woods northwest Montana, 6 p.m., at Washoe Park Pavilion 406-994-3901

10 — St. Timothy’s Summer Festival, Eden Atwood and Friends, 4 p.m.

24 — St. Timothy’s Summer Festival, Werner Cello Quartet, 4 p.m.

SEPTEMBER

27 — Oktoberfest, 10 a.m. to 4 p.m. at Copper Village Museum and Arts Center, 401 E. Commercial, arts and crafts show, farmers market, German food, hot rolls and other food available all day, beer garden, children’s craft area, 406-563-2422.

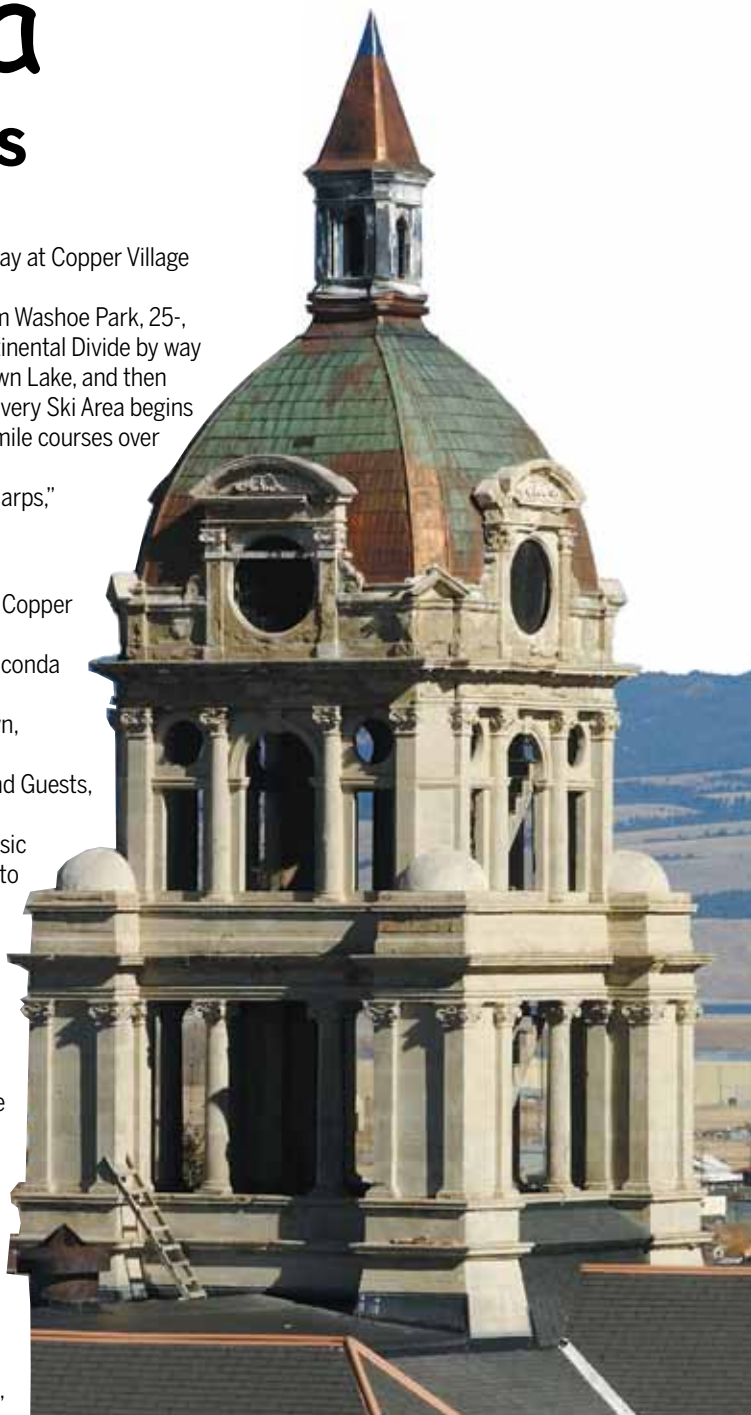
What to see

ALIVE AFTER FIVE

This weekly summer gathering at Durston Park, Main and Park, is held from 5 to 8 p.m. Fridays and offers music, food, crafts and children’s entertainment through the summer. Call 406-560-6109.

COPPER VILLAGE MUSEUM AND ARTS CENTER

Located in Anaconda’s former city hall, the art center gallery shows a monthly exhibit. The museum contains Anaconda Co. records, community artifacts and a large photo collection. Location: 401 E. Commercial Ave. Time:



ANACONDA COURTHOUSE

10 to 4 p.m. Tuesday-Saturday, 406-563-2422; Marcus Daly Historical Society of Anaconda Museum is open 1 to 4 p.m. Tuesday-Saturday, 406-563-2220.

VINTAGE BUS TOUR OF HISTORIC ANACONDA

Departs from Anaconda Visitor’s Center, 306 E. Park Ave. Time: 10 a.m. and 2 p.m. Monday through Saturday, through mid-September, 406-563-2400.

HEARST FREE PUBLIC LIBRARY

The library was a gift in 1898 to the people of Anaconda from Phoebe Hearst, the wife of U.S. Sen. George Hearst of California, a successful investor in Marcus Daly’s mines and smelters. Her son was William Randolph

What to see ...

Continued from Page 14

Hearst of newspaper fame. The building retains its original beauty and fixtures with the second floor rooms are lit by electric chandeliers that could have been also used for gas light. Open Monday through Saturday, 406-563-6932.

SMELTER STACK

The largest round, brick smoke-stack in North America, the stack, pictured at right, stands 585 feet tall. It is the remainder of the Anaconda Co.'s Washoe Smelter. The stack was built in 1918 and is a state historic park. Locations: you can see it from anywhere in Anaconda. A truncated mock-up of the stack is located at the east end of Fourth Street near the former smelter gate.

WALKING TOUR

Maps available at Anaconda Visitor's Center, 306 E. Park Ave., 406-563-2400.

LOST CREEK STATE PARK

Lost Creek Falls, 50 feet high, is set in a glaciated canyon of limestone and granite cliffs populated with mountain goats and big horn sheep. Location: 1.5 miles east of Anaconda on Montana 1, then 2 miles north on Secondary 273, then 6 miles west. Features: camping, fishing, hiking, picnicking, rest rooms, disabled access.

MOUNT HAGGIN WILDLIFE MANAGEMENT AREA

The area, located about 10 miles south of Anaconda, is reached by Route 274. It crosses the Continental Divide through Mill Creek Pass into the Big Hole River drainage with views of the Anaconda Range and opportunities to view moose, elk, deer, antelope, black bear, birds, beaver, muskrat, mink, martens and coyotes.

PINTLER SCENIC ROUTE

This loop on Montana 1 runs through Anaconda, Georgetown Lake, the Flint Creek Range and Philipsburg to Drummond. Maps are available at the Anaconda Chamber of Commerce Visitor's Center, 306 E. Park Ave., 406-563-2400.

WASHOE PARK

The Anaconda Copper Mining Co.



started the park in 1906 on the northern edge of Anaconda. It has a state fish hatchery, swimming pool, baseball field, new tennis courts, flower beds, playground and picnic areas, duck pond, horseshoe pits, volley ball court, with the crystal waters of Warm Springs Creek flowing through its midst.

COPPER CHUTE SLIDE

This super slide at Charlotte Hearst of newspaper fame. The building retains its original beauty and fixtures with the second floor rooms are lit by electric chandeliers that Yeoman Martin Complex on the northeast edge of town starts atop a 40-foot mound and undulates for 140 feet to the bottom. It's free for children of all ages.

WASHOE PARK TROUT HATCHERY

The hatchery is oldest in the state and started (1907) with help from the Anaconda Copper Mining Co. The hatchery has raised Arctic grayling, westslope cutthroat trout, rainbow trout, brook trout, golden trout, lake trout and brown trout. It now manages Montana's only westslope cutthroat broodstock, producing more than one million eggs per year. Call 406-563-2531 for details and tours.



*Experience A Tour Of Italy
In Butte, Montana!*

Your Favorite Italian Cuisine &
American Dishes Too...
Seafood • Steaks • Manicotti
Fettucini and Much More!

Breakfast • Lunch • Dinner

DAILY SPECIALS
Breakfast Starts At 6 AM

1201 South Montana
782-6587

Corner of Centennial & Montana
www.chefsgarden-jokerswild.com

**OVER
11 FLAT
SCREENS**

**Drink
Specials**

**Great
Snacks**

**Daily
Cash
Giveaways**

Butte's Best Casino

8 FREE Daily Cash Drawings

Guaranteed Winner

Join Our Players Club And Receive \$5 Match Play!
Ask For Details

St. Timothy's Summer Music Festival

St. Timothy's Summer Festival celebrates its 19th season at St. Timothy's Memorial Chapel at Southern Cross. Concertgoers will experience wonderful music in a superb acoustical venue at 7,000 feet with beautiful views of the Anaconda Range and Georgetown Lake. Picnic on the grounds before or after.

Concert series ticket holders receive priority seating in the front rows until 3:45 p.m. Concerts are held at 4 p.m. on Sundays.

June 29 —

Joy & Karin Gunderson, Heavenly Harps. Joy Gunderson, a graduate of St. Olaf College, Northfield, Minn., plays a six-foot high concert grand pedal harp and is a favorite for weddings.



Karin Gunderson plays a 4½-foot high Celtic harp. Karin has developed a repertoire that includes classical, popular, Christian, Latin American, Celtic, and country western. She is a music graduate of Concordia College, Moorhead, Minn., and is also a vocalist,

pianist and flutist.

July 13 — Members of the Muir String Quartet and Guests — In its 35th season, the quartet's performances aim to pass on the great European tradition learned by its mentors, the Budapest and Guarneri quartets. In residence at Boston University, it has been praised by The New York Times as "the sound, the depth and interpretive polish to rival the best in the world."

This year's artists include: Brant Bayless, viola; Alexander Fiterstein, professor of clarinet at the University of Minnesota; Paul Glenn, double bass and cello; Bayla Keyes, recitalist, soloist with orchestras, and member of Boston Musica Viva and the piano trio, Triple Helix; Michele Levin, pianist and composer; Ilse-Mari Lee, cello; Kathleen Reynolds, professor of bassoon and woodwind chamber music coordinator at the University of North Texas; Michael Reynolds, cellist of Muir String Quartet; William Scharnberg, principal horn of the Dallas Opera Orchestra; Thomas Wolf, flutist; Peter Zazofsky, violinist; Chris Brubeck, bass, trombone, piano, guitar, sings and is a composer.

July 27 — James Schlender on violin and Craig Hall on acoustic guitar. Schlender, a violinist, attends the University of Miami (Florida) studying jazz and classical violin. Hall, a Montanan, is a jazz guitarist and acoustic

bassist who is the definitive sideman. He has played with the Montana Mandolin Society, Eden Atwood, Jeni Fleming Trio and others.

Aug. 10 — Eden Atwood & Friends, jazz



vocals. Atwood attended the University of Montana's drama department and then the American Conservatory of Music in Chicago. She had acting and modeling jobs in New York, Los Angeles and Paris. She began singing in Manhattan and later headlined at the Gold Star Sardine Bar. She was the youngest jazz artist signed to Concord Records and made her debut with Marian McPartland on "There Again" in 1994.

Aug. 24 — Werner Cello Quartet. The quartet is composed of siblings, Helene, Lucien, Mariel, and Andree. They were born and raised in Montana and have soloed with many Montana orchestras and performed in the U.S., France and Holland.

For details call (888) 407-4071, Ext. 1 for ticket sales, Ext. 2 for concert information.

Sagebrush Sam's

GENTLEMEN'S CLUB & CASINO

**OPEN 7 Days A Week
6pm - 2am**

ADULT GAMING MACHINES

Couples Welcome!

723-4757



**Now Serving Appetizers
Live Poker-Friday Nights!
New Executive Room**

21 & Older Only



Butte & Dillon's Premier BBQ

- * **BBQ** * **Salads**
- * **Full Service Bar**
- * **Steaks** * **Seafood**
- * **Much More**

**Enjoy The Summer Weather...
Dine On Our Deck!**

★ **BUTTE** ★
222 East Park
782-2301

★ **DILLON** ★
420 E. Poindexter
683-2828

★ **CASINO** ★
Full Liquor

★ **FULL BAR** ★

Deer Lodge and Powell County

Calendar of events

JUNE

13 — Tina Schowengerdt Memorial 4D Barrel Race, Tri-County Fairgrounds, Deer Lodge, registration 2 p.m. Friday, races all day Saturday and Sunday.

13 — Cutler Bros. Productions perform "Of Mice and Men" the following dates and times. Friday, June 13, 7:30 p.m.; Saturday, June 14, 2 and 7:30 p.m.; Sunday, June 15, 2 p.m.; Wednesday, June 18, 7:30 p.m.; Thursday, June 19, 7:30 p.m.; Sunday, June 22, 2 p.m.; Wednesday, June 25, 7:30 p.m.; Thursday, June 26, 7:30 p.m.; Saturday, June 28, 7:30 p.m.; Sunday, June 29, 2 p.m. The production of "Guys and Dolls" will be performed Wednesday, July 23, 7:30 p.m.; Thursday, July 24, 7:30 p.m.; Friday, July 25, 7:30 p.m.; Saturday, July 26, 7:30; Sunday, July 27, 2 p.m.; Wednesday, July 30, 7:30 p.m.; Wednesday, Aug. 6, 7:30 p.m.; Thursday, Aug. 7, 7:30 p.m.; Friday, Aug. 8, 7:30 p.m.; Saturday, Aug. 9, 7:30 p.m.; Sunday, Aug. 10, 2 p.m. Performances are in Cutler Bros. Theater in downtown Deer Lodge.

14 — Territorial Days: Show N Shine, Parade & Jaywalkers Jamboree, Deer Lodge 406-846-2094

15 — Fathers Day Golf Tournament, Deer Park Golf Course, 406-846-1625

27 — Weapons Collectors Society Gun Show, Old Montana Prison, 406-846-3111

28-29 — Deer Lodge Vintage Days, Powell County Fairgrounds, antiques, shabby chic and more, 406-498-4144

JULY

4 — Fireworks display and potluck, Old Prison Yard, open at 5:30 p.m., free, 406-846-3111

TBA — Bull-A-Rama, fairgrounds, 7 p.m., 406-560-0020

26 — Branding, 9 a.m.-1 p.m., Grant Kohrs Ranch National Historic Site, Deer Lodge, 406-846-2070

27 — Haying with horses, 1-4 p.m. at Grant-Kohrs Ranch, 406-846-2070

AUGUST

7 — Haying with horses, 1-4 p.m., Grant-Kohrs Ranch, 406-846-2070

12 — Haying with horses, 1-4 p.m. Grant Kohrs Ranch, 406-846-2070

13 — Garden tour, 5-7 p.m., Community Garden, 406-560-5966

16 — Farmers market, 9-noon, at Community Garden, 623-680-4525

13-17 — Tri-County Fair and Rodeo, fairgrounds, 406-565-0032

17 — Demolition Derby, 6 p.m., fairgrounds, 406-846-2094

21 — Haying with horses, 1-4 p.m. at Grant-Kohrs Ranch, 406-846-2070

23 — Ranch Horse Competition, fairgrounds, 406-866-3434; Farmers market, 9-noon, at Community Garden, 623-680-4525

24 — Horse Show and Sale, fairgrounds, 406-866-3434

27 — Montana Shakespeare in the Parks presents "Romeo and Juliet," in Old Prison Yard, at 6 p.m., free

30 — Farmers market, 9-noon, at Community Garden, 623-680-4525

31 - Sept. 1 — Helmsville Labor Day Rodeo, Sunday at 1 p.m. features top six bareback riders in Northern Rodeo Association and Monday at 1 p.m. features the top six saddle bronc riders, food and beverage concessions. Dancing from 9 p.m. to 2 a.m. Sunday at Helmsville Community Hall. Both days have sheep riding for kids 5-8 and wild cow milking for anyone, 406-793-5711.

SEPTEMBER

6 — Farmers market, 9-noon, Community Garden, 623-680-4525

10 — Montana Academy of Living History, Deer Lodge, 406-846-3111

13 — Farmers market, 9-noon, Community Garden, 623-680-4525

13-14 — Big Sky Draft Horse Expo, fairgrounds, trade show of arts, crafts, harness and leather equipment, single and team competition, using up to six horse hitches, log skidding, cultivating, obstacle course, feed team race



Standard file photo

THE BIG SKY DRAFT HORSE EXPO at the fairgrounds in Deer Lodge includes single and team competition, using up to six horse hitches, log skidding, cultivating, obstacle course, feed team race and other events.

and other events. Stick horse races for youngsters. Hall of fame induction Saturday evening. Cowboy church at fairgrounds Sunday. For details call 406-846-2854, 406-490-1305 or go to www.drafthorseexpo.com.

20 — Farmers market, 9-noon, at Community Garden, 623-680-4525

What to see

GRANT-KOHR'S RANCH NATIONAL HISTORIC SITE

Once the headquarters of a 10 million acre cattle empire, the site is a working cattle ranch that preserves these symbols and commemorates the role of cattlemen in American history. It is located on 1,600 acres and has more than 80 historic structures, many historic artifacts including wagons and carriages, walking trails, and tours of the main ranch house at the north end of Deer Lodge. Time: 9-5:30 p.m. daily, free admission. Phone: 406-846-2070

OLD MONTANA PRISON MUSEUMS

The Montana Territorial Prison was built on the site in 1871 at the south end of Main Street. The Montana State Prison developed there and was in use until 1979. Tours show visitors inside the stone walls and towers through the vacant four-tiered cell block and prison yard. Montana Auto Museum: more than 150 antique cars on display, it's a must-see that will take you down memory lane. Vintage camping vehicles include a very rare motor home built by Pierce Arrow in 1928. Frontier Museum: the best display of cowboy collectibles between Cody and Calgary. See the guns, spurs, chaps, reatas and all the rest. Then tour Desert John's Saloon, a unique whiskey memorabilia collection. Yesterday's Playthings: a collection of dolls and toys dating back to 1835. The "Little Joe": an electric engine operated by the Milwaukee Road was originally built for Joseph Stalin. Law Enforcement Museum is located up the stairs in the 1912 Cell House and contains a memorial room dedicated to honor the Montana Law Enforcement officers who have fallen in the line of duty. It is not wheelchair accessible.

All attractions are open 8 a.m. to 6 p.m. daily, 406-846-3111.

■ Powell County Museum: an extensive gun collection, antique furniture, mining display, photo collection and equipment, noon to 5 p.m. daily, 406-846-1694.

WELCOME TO DEER LODGE MONTANA!

HALF WAY
BETWEEN GLACIER
& YELLOWSTONE

Grant-Kohrs Ranch National Historic Site

National Park Service
Department of the Interior



Grant-Kohrs Ranch commemorates the open range cattle industry - the days when cattle ranged freely over millions of acres of unfenced, public land.

Ranger programs and hands-on children's activities are offered daily.

Grant-Kohrs Ranch also hosts several special events throughout the year.

- Branding Event July 26
- Haying with Horses July 27, Aug 7, 12, 21
- MT Academy of Living History Sep 10-12
- Pumpkin Sunday October 19
- Holiday Open House December 7

www.nps.gov/grko



Advertisement paid for by Grant-Kohrs Ranch Foundation
www.gkrf.org

1106 MAIN, DEER LODGE
www.oldprisonmuseum.com



SUMMER HOURS OPEN DAILY 8 am till 6 pm

ONE PRICE gets you
these **ATTRACTIONS!**

Old Montana Prison
Montana Auto Museum
Frontier Montana
Yesterday's Playthings
Powell County Museum



Present this
Coupon to
Receive
\$1 DISCOUNT
on Museum
Entry +
10% OFF
Gift Shop
Sales

2014 Fundraiser
'Win a Classic' Raffle
1966 Mustang



1 ticket for \$5
5 for \$20 15 for \$50
40 for \$100

Call 846-3111

WELCOME TO DEER LODGE MONTANA!

HALF WAY
BETWEEN GLACIER
& YELLOWSTONE

Western Big Sky Inn

A Comfortable Stay With A Touch Of Class



210 N. Main Street
Deer Lodge, MT 59722
(406)846-2590

westernbigskyinn.com

WELCOME TO DEER LODGE



ENJOY ALL
OUR CITY HAS
TO OFFER!

FOR ALL OF YOUR FURNITURE, APPLIANCE AND ELECTRONICS NEEDS.
STEELE'S
FURNITURE • TV • APPLIANCE

DEER LODGE: 417 Main • 846-3311 • WWW.STEELESFURNITURE.COM

Territorial Antiques



*In the Historic Warden's Mansion
Across from the Old Prison Museums*

Open all year

10 a.m. to 5 p.m. Mon.-Sat.

Open Sun. during the summer
months 12 p.m. to 4 p.m.

300 Maryland Ave., Deer Lodge, MT
406-846-1400

Deer Park Golf Course Deer Lodge, Montana



*New members: Family \$450; single \$260- (\$100 off
regular price). \$100 associate membership.*

	Green Fees	Green Fees w/ Cart
9 Holes	\$14.00	\$23.00
18 Holes	\$20.00	\$30.00

*Stop by and check out the fun tournaments –
public is welcome!*

*The Deer Park Golf Course Is Located Approximately
2 Miles West Of Deer Lodge Montana*

(406) 846-1625

Philipsburg, Granite County



A CROWD takes in the Philipsburg Summer Concert and Charity Auction in August 2013. This year's concert is August 16-17 at Winninghoff Park. Performers include Missoula's "Tomcats" and "406."

Calendar of events

JUNE

11 — Waffle Wednesday, 11 a.m., Taylor Knapp building, Philipsburg, homemade buttermilk pancakes and waffles, strawberries, cream, huckleberry topping. Payment is by donation. Call 406-859-3353 for details. Funds go to summer flowers and flags.

13-15 — Montana Mule Days, the state's largest mule and donkey show with over 100 classes featuring driving, riding, cattle and fun events at Drummond rodeo grounds, 8 a.m. to dark. Competition comes from up to six different states. Camping on the grounds, commercial booths, food available, covered grandstand and family entertainment, 406-777-2331.

14 — Barbecue Challenge, 10 a.m. Saturday, people come from all over to enter their barbecue. Contact Sunshine Station, Philipsburg 406-859-3450 for details.

21 — Summer Solstice Paseo, 7:30-10 p.m. Saturday. Enjoy the longest day of the year listening to live music, strolling Philipsburg, along with snacks and drinks.

21 — Garnet Interpretive Day, at Garnet ghost town, building tours, music, gold panning, sample fresh ice cream, eat lunch, hamburgers and hot dogs are on sale, kids games, hats and shirts on sale and more 406-549-9411

26 — Opera House Theatre, Philipsburg, opens for the season with three shows in repertory.

29 — St. Timothy's Summer Festival, Joy and Karin Gunderson, "Heavenly Harps," St. Timothy's Chapel, near Georgetown Lake, 4 p.m.

JULY

6 — Drummond PRCA Rodeo, rodeo parade at noon on Front Street, main event at 2 p.m. with saddle bronc riding, bareback riding, barrel racing,

steer wrestling, tie down roping, team roping and bull riding. Tickets are \$10 adults and \$5 for children ages 6 to 10, available at the gate. Roughstock Saloon hosts a street dance after the rodeo. 406-288-3479

13 — St. Timothy's Summer Festival, Members of the Muir String Quartet and Guests, St. Timothy's Chapel, near Georgetown Lake, 4 p.m.

25-27 — Flint Creek Valley Days, Philipsburg, kiddie parade Friday night. On Saturday: pancake breakfast, parade at noon, kiddie carnival at Winninghoff Park, evening street dance. The classic car show is Sunday with awards at 5 p.m. Call 406-859-3388 or 406-544-7424 for details.

27 — St. Timothy's Summer Festival, James Schlender on violin and Craig Hall on acoustic guitar, 4 p.m.

AUGUST

4 — Shakespeare in the Parks, 6 p.m. Monday, Winninghoff Park, Philipsburg, "Romeo and Juliet," the classic story of beauty, youth, and love, destroyed at the height of passion.

10 — St. Timothy's Summer Festival, Eden Atwood & Friends, jazz vocals, St. Timothy's Chapel, near Georgetown Lake, 4 p.m.

16-17 — Philipsburg Summer Concert and Charity Auction, Winninghoff Park. Saturday: Missoula's "Tomcats" and "406" provide music. Silent and live auctions will offer float trips, cabin rentals, gift certificates, etc. On Sunday: Cold Hard Cash Show and a brewfest hosted by Philipsburg Brewing Co. Admission is free. More bands will be added. Bring umbrellas, chairs and blankets, free admission, food concessions, beer. Call 406-691-1459 or 406-859-3388 or go to www.PhilipsburgRotary.org.

24 — St. Timothy's Summer Festival, Werner Cello Quartet, St. Timothy's Chapel, near Georgetown Lake, 4 p.m., 888-407-4071

31-Sept. 1 — Helmsville Labor Day Rodeo, Sunday at 1 p.m. top six bareback riders and Monday at 1 p.m. top six saddle bronc riders, food and

What to see

GRANITE COUNTY MUSEUM AND CULTURAL CENTER

Originally built as the Courtney Hotel on Sansome Street, by the Courtney brothers in 1918, the building now houses displays of culture, history and mining, 10 a.m.-4 p.m., daily, 859-3020.

SAPPHIRE GALLERY

One can buy a bag of dry screened gravel concentrate to "table mine" and keep any gems found; 115 E. Broadway St., Sunday through Friday, 406-859-3236.

GRANITE GHOST TOWN

East of Philipsburg, 4 miles by dirt road, this abandoned mining camp was known in 1890 as the "Silver Queen." The park preserves the Granite Mine Superintendent's House and ruins of the miners union hall.



GEORGETOWN LAKE

GEORGETOWN LAKE

Approximately 18 miles west of Anaconda, Georgetown Lake is a popular recreation area for boating, fishing, camping and windsurfing and winter sports.

GARNET GHOST TOWN

The town, northwest of Drummond and dating back to 1895, has a pastoral setting in the midst of the forest with cabins and buildings on a carpet of green. It is managed by the Bureau of Land Management and Garnet Preservation Association. Its 30 buildings and visitors center are 11 miles up a gravel road, north of I-90. Call 329-3914 for details. The Philipsburg Chamber of Commerce Web site has an extensive list of nearby ghost towns, their history and present condition.

SKALKAHO PASS

The Skalkaho Road, one of Montana's scenic gems, opens in May or June depending on snow conditions and extends about 60 miles from its junction



GRANITE GHOST TOWN

with Montana 1, 6 miles south of Philipsburg, to its junction with U.S. 93, just south of Hamilton. About 20 miles is gravel. It passes through the green meadows of the Flint Creek Valley and crosses a pass into the Rock Creek drainage. Along the way are postcard views of the snowcapped Anaconda Range in the Anaconda-Pintler Wilderness. The route proceeds up the West Fork of Rock Creek with scenery that reminds one of Yellowstone's rocky, lodgepole streams. After crossing Skalkaho Pass, 7,262 feet, it descends into the Bitterroot Valley once famous for its truck gardens and orchards. In the spring, Skalkaho Falls generates a refreshing mist that blows across the road. The westbound trip is safest because you have the inside lane. There are no guardrails along the road which is carved into the steep hillside hundreds of feet above Daly Creek. The depth of the canyon is spectacular along with ever-changing views of the distant Bitterroot Mountains.

Opera House Theatre Company

Philipsburg's Opera House Theatre Company presents three shows in repertory Thursday through Sunday, June 26, 2014, through Aug. 31, 2014. Curtain times are 7 p.m. Thursday, Friday and Saturday, with matinees at 2 p.m. Friday and Saturday, and 4 p.m. Sunday.

The shows are:

"Wife Begins at Forty"

George Harper and his wife, Linda, are celebrating 17 years of marriage which, for Linda, has lost all passion with George falling asleep as soon as his head hits the pillow. Seemingly unaware when confronted with the problem, George goes to drastic measures that solve nothing and ultimately ends up moving out. Next door neighbor, Roger, does not have George's problem but assuredly has a few of his own! Rebecca Schaffer is director.



"Current Economic Conditions"

After losing her low-level job in the publishing industry, 26-year-old Lily has no choice but to move back in with her well-meaning but neurotic parents. A series of disastrous interviews and her parents' strict house rules have Lily feeling more like a troubled teenager than an employable young woman — and the Justin Bieber poster in her old bedroom doesn't help. This fun comedy farce is current for the whole family. Written by Don Zolidis and directed by David Mills-Low.

Vaudeville Variety Show

At its height, vaudeville played to all economic classes. By the late 1890s vaudeville had large circuits, houses in almost every sizable location and was especially favored in frontier settlements. Join us for great family fun with the best of satire, music, comedy, skits, hilarity, hi-jinks and the famous Maxville Chickens.

Call 406-859-0013, ohtc@blackfoot.net;

www.OperaHouseTheatre.com. Tickets are \$20 adult, \$10 children (15 and under).

Philipsburg ...

Continued from Page 20

beverage concessions, dancing from 9 p.m. to 2 a.m. Sunday at Helmville Community Hall, both days have sheep riding for kids 5-8 and wild cow milking for anyone, 406-793-5711.

SEPTEMBER

13 — Miners Union Picnic and competition, at 9 a.m. Saturday. A mining competition for those current, retired, and want-to-be miners. A great time for a family to participate or watch. Call Bonnie Fiddler 406-859-5125.



PAT HANSEN PHOTO

MUTTON BUSTING is a crowd favorite at most rodeos, and that was true at the Helmville Rodeo in 2013. Clown/mutton fighter Jaxon Kruzich, 5, of Deer Lodge is ready to lend a hand when this young mutton buster loses his grip and hits the dirt.

Dillon, Beaverhead County

Calendar of events

JUNE

14 — Reichle Raccoon Fun Run, taco feed, silent auction, bake sale, at Glen, non-competitive 1- and 5-mile, start at Reichle School. Run shirt and lunch (\$20) (\$30), start at 10 a.m. and 10:15 a.m. Proceeds to Reichle School. Go to www.facebook.com/reichleraccoonrun, 406-925-0504.

28 — RATPOD (Ride Around the Pioneers in One Day) is a one-day, 130-mile bicycle ride to benefit Camp Mak-A-Dream, start and end at University of Montana Western, Dillon, check-in Friday, start at 6 a.m. Saturday; registration required, limited to 650 riders. 406-549-5987, www.ratpod.org.

28 - Sept. 27 — Dillon Farmers Market, at 20 Montana St., offers local produce and prepared food specialties, arts and crafts on Saturdays, 406-498-6198

JULY

19 — Demolition Derby, sponsored by Dillon Jaycees, parade at 2 p.m. followed by derby at 4 p.m. at Beaverhead County Fairgrounds, 406-683-5771

19-20 — Bannack Days, at Bannack State Park is a celebration of pioneer life, music, demonstrations, talks, skits, poetry. Call 834-3413.

27 — Montana Shakespeare in the Parks presents "As You Like It." In the original play, heroine Rosalind is exiled from her uncle's court. Disguising herself as a boy, she finds safety and eventually, love in the Forest of Arden. Inspired by the documentary, "Butte, America," new artistic director, Kevin Asselin sets this production in 1917 Montana where Rosalind leaves the world of the Copper Kings in Butte and finds refuge in the forested communities of northwest Montana. Curtain time is 6 p.m. in Jaycee Park in Dillon with free admission. 406-994-3901

AUGUST

9 — Commemoration of the Battle of the Big Hole between the Nez Perce and the Army on Aug. 9, 1877, at Big Hole National Battlefield, 10 miles west of Wisdom on Highway 43, open 9 a.m. to 5 p.m., free admission, 406-689-3155

27 - 31 — Beaverhead County Fair at fairgrounds, arena events, 4-H livestock shows, vendors, exhibits, karaoke, carnival, two PRCA rodeos and an outdoor concert with big-name country entertainment, 406-925-3645.

30 - 31 — Montana's Biggest Weekend, Dillon Jaycees PRCA Rodeo.

SEPTEMBER

1 — Dillon Labor Day parade

What to see

BEAVERHEAD COUNTY MUSEUM

A log structure at 15 S. Montana St., housing artifacts and photos of area history, Lewis and Clark exhibit and natural history exhibit. Walking tour maps available. Times: 9-5 p.m. Monday-Saturday and by appointment. Phone: 683-5027.

BEAVERHEAD ROCK STATE PARK

Recognized by Sacagawea as a landmark during the Lewis and Clark Expedition in 1805. Seen from the Waterloo area, this rock and hill west of it resembles a beaver swimming. The park is undeveloped. It is also called Point of Rocks by locals. Located 14 miles northeast of Dillon on Montana 41.

WESTERN MONTANA COLLEGE MUSEUM AND GALLERY

The campus houses a gallery/museum, 710 S. Atlantic St., that features

See **DILLON**, Page 23



WALLY FELDT PHOTO

SUNDAY AFTERNOON at last year's Dillon Jaycee rodeo, Chase Erickson of Helena made the most of his bareback re-rides.

Montana's Biggest Weekend

Finding something to do on Labor Day Weekend in Dillon is as easy as rolling off a log: Beaverhead County Fair, Dillon Jaycees' PRCA Rodeo, a concert with Sawyer Brown and the Jaycees' Labor Day parade.

The rodeo and concert will be at the Beaverhead County Fairgrounds, with rodeo performances at

7:30 p.m. on Saturday and 1:30 p.m. on

Sunday. The concert with country legend Sawyer Brown starts at 8:30 p.m. on Sunday. The Labor Day parade starts at 10 a.m. Monday.

Ticket sales for the concert start Saturday, July 26, 8 a.m. to 5 p.m., at the Jaycee Building-Beaverhead County Fairgrounds.

Advanced tickets are \$20 for general admission; day of show tickets are \$25.

Tickets will also be available online beginning Monday July 28, 2014 at 8 a.m. Follow our link from our tickets sales button under the "Ticket Sales" heading.

Sales continue during the Beaverhead County Fair at the Jaycee Building, starting Thursday Aug. 28.

Please call 406-683-5771 for more information.



SAWYER BROWN



A STAGECOACH holdup is part of the fun of Bannack Days during last year's event. This year, Bannack Days is the weekend of Aug. 19-20, and celebrates pioneer life, music, demonstrations, talks, skits, poetry.

Dillon ...

Continued from Page 22

traveling exhibits, student art, and a permanent collection of C.M. Russell, E.S. Paxson, Ansel Adams and Russell Chatham. Seidensticker's wildlife collection comes from Africa, Asia, and North America. Open from 9 a.m. to 4 p.m. Monday through Friday, 683-7232.

BANNACK STATE PARK

The site of Montana's first major gold discovery in 1862. Located 5 miles south of Dillon on Interstate 15, then 21 miles west on Secondary 278, then 4 miles south on county gravel road. This park is open year-round, weather permitting. Features: information center, RV and tent camping, picnic areas, fishing, disabled access. A summer highlight is Bannack Days, July 20-21, a celebration of pioneer life, music, demonstrations, talks, skits, poetry. Call 834-3413.

CRYSTAL PARK

From Dillon, go south on Interstate 15 to Highway 278, west to National Forest Scenic Byway. Features picnicking and digging for quartz crystals and amethyst. Opens in June depending on weather, 683-3900.

BIG HOLE NATIONAL BATTLEFIELD

The battlefield is a memorial to the people who fought and died there Aug. 9-10, 1877, combatants in a five-month conflict that came to be called the Nez Perce War. Army troops under the command of Gen. Oliver Howard attacked the Nez Perce camp before dawn. Some 60 Nez Perce were killed and 29 soldiers. 406-689-3155

CHARCOAL KILNS

The kilns are located in Canyon Creek, west of Melrose, and produced charcoal for smelting silver and other metals at Hecla Consolidated Mining Co.'s nearby Glendale smelter.

COOLIDGE

This (now-ghost town) was developed in the 1920s around the impressive Elkhorn Mill. A narrow gauge railway carried ore to Divide and the Oregon Shortline Railway for shipment out of state.



CLARK CANYON RESERVOIR

RED ROCK LAKES NATIONAL WILDLIFE REFUGE

The refuge is 85 miles southeast of Dillon in the stunning expanse of the Centennial Valley, a one-time main route to Yellowstone National Park from the railroad at Monida. The refuge's lakes and marshes became a haven for the trumpeter swan - once threatened with extinction. 406-276-3536

CLARK CANYON RESERVOIR

The lake is popular for water skiing and fishing. Camp Fortunate was an important stop for the Lewis and Clark expedition. During drought years, the foundations of the drowned town of Armstead appear.

PIONEER MOUNTAINS SCENIC BYWAY

This highway, not much traveled in summer and closed in winter crosses through the Pioneer Mountains from Wise River in the north to Polaris in the south. The sights include the snowy peaks of the East Pioneers, lush meadows, some beetle killed forest, the mining ghost town of Coolidge, wildlife, Elkhorn Hot Springs, and the ranch country of the Grasshopper Valley.

Big Hole National Battlefield

All cultural demonstrators will give their presentations at noon and 3 p.m. Saturday and Sunday at the Visitor Center except for Aug. 9-10.

June 28-29 — Josiah Pinkham will discuss Nez Perce story telling, history and culture and Allen Pinkham (co-author with Steve Evans of newly published book "Lewis and Clark among the Nez Perce") will discuss his book.

July 5-6 — Vivian Wilson — construction, purpose and evolution of the cradleboard

July 12-13 — Silas Whitman — traditional use and access of natural resources for the Nez Perce people and Leroy Seth's subject is historical perspectives of powwow as a native art form

July 19-20 — Nakia Williamson — undecided topic

July 26-27 — Michael Johnson and Shawna Gavin — demonstrate the "stickgame" and the art of weaving

Aug. 2-3 — Unknown at this time

Aug. 9 — Commemoration of Big Hole Battle followed by Mike Penney and Nez Perce Nation Drum (drum and song) and campfire program (Nez Perce Nation Drum at May Creek 7 p.m.)

Aug. 10 — Nez Perce Nation Drum at noon at the Visitor Center

Aug. 16-17 — Bob Brown — first person presentation of Major Rawn, a participant of the 1877 conflict.

For details call 406-689-3155.



JANICE DOWNEY PHOTO

THE SUN dawns at the Big Hole Battlefield in this August 2012 photo and lights the teepee poles that represent almost 90 lodges where Nez Perce slept. The U.S. Cavalry attacked the village at dawn on Aug. 9, 1877.

Bannack State Park

Education and entertainment series

Bannack State Park presents its education and entertainment series on Saturdays through the summer. The site of Montana's first major gold discovery in 1862 is located 5 miles south of Dillon on Interstate 15, then 21 miles west on Secondary 278, then 4 miles south on county gravel road. The park is open year-round, weather permitting. Call 834-3413.

JUNE

7 — "Firearms of the American Frontier" Will Abbot uses reproduction and original firearms, cartridges and accoutrements providing a hands-on opportunity to understand the capabilities and limitations experienced by emigrants, soldiers and explorers who opened the West, 2 p.m.

14 — "Brother Can You Spare a Dime?" Through

songs and "illiterature" presenter Bill Rossiter looks at what happened to the common folks during the Great Depression. This bare knuckle report on the state of the union during the Dirty Thirties is accompanied by banjo, guitar and autoharp, 7 p.m.

21 — "Montana's Vigilantes and the Law" Carol Buchanan tells how crime in the gold camps was a deadly problem and in response the Vigilantes formed in December 1863. Rather than acting in defiance of the law, they established the rule of law, 2 p.m.

28 — "Green Strings Band" is traditional bluegrass, folk and roots



GOLD PANNING AT BANNACK

music duo that is popular in the Billings and Bozeman areas. Jarret Kostuba plays mandolin and harmonica and Tim Mason plays guitar, 7 p.m.

JULY

5 — "Learn the Art of Gold Panning" The Bannack staff teaches you how to pan like an experienced prospector, 2 p.m.

12 — "An Evening of Cowboy Poetry" Rick Kuntz, Val Prophet and Ron Russell deliver the latest and greatest adventures in verse, 7 p.m.

19 - 20 — Bannack Days celebrates 152 years of Bannack history. Enjoy traditional music, skill and craft demonstrations, gold panning, gunfights, food and more; 9-5 p.m. Saturday, 9-4:30 p.m. Sunday.

26 — "Mark Twain" Michael Delaney brings Mark Twain back to life. In the 1860s Twain had breakfast with the notorious Virginia City desperado, Bad Jack Slade. Twain survived the encounter and later returned to Montana on a worldwide lecture tour, 2 p.m.

AUGUST

2 — "The Best of Bannack" Musicians who have performed for years in Bannack perform for and old fashioned barn dance in the new shelter, 7 p.m.

9 — "Raptors of the Rockies" Kate Davis brings owls, hawks and eagles and presents an inside look into their lives, 2 p.m.

16 — The Mountain Gospel Express, a four-piece band provides "foot-stomping, hand-clapping" gospel and bluegrass music, 7 p.m.

23 — "Lewis and Clark in Southwest Montana" Steve Morehouse, along with period accoutrements, supplies and a dugout canoe, brings to life the Corps of Discovery's journey to the Pacific Ocean, 2 p.m.

30 — "Star Gazing the Bannack Skies" Tom Satterly, Craig Zaspel and Sheila Roberts will be your guides to the stars. Telescopes for viewing distant planets and galaxies will be on site. Bring your lawn-chairs and viewing optics, 9 p.m. Program begins at dusk in the main parking lot.

Whitehall, Jefferson County

Calendar of events

JUNE

7 - Oct. 25 — Whitehall farmers market is from 9 a.m. to 1 p.m. Saturdays on Legion Avenue. It offers produce, meat, seafood, and crafts. 406-287-2276

15 — Whitehall Saddle Club holds an O-Mok-See. It is a Blackfeet Indian word and means "riding big dance." The games, for all ages, are played on horseback at the Whitehall rodeo grounds and include national flag race, keg race and polo turn. 406-490-0645

28 — Fairy and Wizards Festival: This day of the year, 10 a.m. to 4 p.m. Saturday is when garden fairies and wizards can be seen. Dress as your favorite fairy, gnome, elf or wizard. Vendors, kid activities, music, food, kid's parades. Meet the fairy godmothers, tooth fairy, storyteller fairy and troll who lives under the bridge, 38 Tizer Lake Road, Jefferson City, 406-933-8789.

JULY

3 - Sept. 25 — Boulder Farmers Market is from 10 a.m. to 3 p.m. Thursdays in the Boulder City Park offering local produce, bedding plants, herbs, flowers, and now Montana-grown meats. Local crafters and bakers participate. 406-465-2106

13 — Whitehall Saddle Club holds an O-Mok-See, at Whitehall rodeo grounds 406-490-0645

AUGUST

8 - 10 — Rockin' the Rivers rock festival features: on Friday — Queensryche, Winger, Lita Ford, Vixen, Rail, Sin City Sinners; on

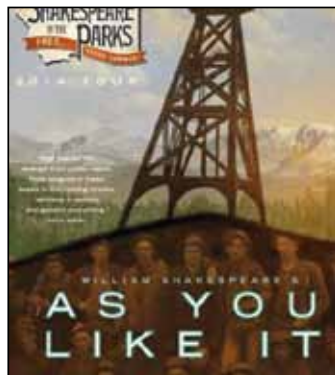
Saturday — Hinder, Pop Evil, The Pretty Reckless, Aranda, Bobaflex, Blistered Earth, Jared Stewart; and Sunday — Black Stone Cherry, April Wine, Jefferson Starship, Fran Cosmo, The Babys. The site is located on Highway 2, four miles east of Lewis & Clark Caverns. Toll-free info: 866-285-0097. Ticket outlets are Butte Civic Center Box Office, 1340 Harrison Ave., Butte, (800) 555-8989; and Bruce and Bob's Good Guy Pawn, 202 S. Arizona Ave., Butte, 406-723-2155.

20 — Montana Shakespeare in the Parks presents "As You Like It" at 6 p.m. Wednesday in the Jefferson County Fairgrounds, Boulder. 406-994-3901

21 - 24 — Jefferson County Fair and Rodeo at fairgrounds in Boulder. On Thursday the Brewery Follies of Virginia City perform at 7 p.m. at fairgrounds. On Friday is the kids horse show, parade, and rodeo; the in-county rodeo is 4 p.m. On Saturday the rodeo parade is 1 p.m.; live music; beef barbecue at 4 p.m.; Northern Rodeo Association rodeo is 5 p.m.; baked goods auction is 7:30 p.m.; barn dance is 8 p.m. On Sunday the dog show is 10 a.m.; kid's stick horse rodeo is 11 a.m.; Northern Rodeo Association is 2 p.m. For details: 406-225-3234 or www.jeffco.mt.gov



QUEENSRYCHE



GUESTS AT THE 2013 FAIRY AND WIZARDS FESTIVAL are pictured above on Tizer Lake Road in Jefferson City.

24 — Whitehall Saddle Club holds an O-Mok-See at Whitehall rodeo grounds. 406-490-0645

SEPTEMBER

4 — Montana Shakespeare in the Parks presents "As You Like It," set in 1917 Montana, at 6 p.m. Thursday on the lawn of the Whitehall School. Details: 406-994-3901

6 - 7 — Boulder Car Show at Veterans Park, Boulder. About 100 classic and antique cars on display; concessions, music, poker walk; judging at 1 p.m.; awards at 3 p.m.; 406-465-2106



Montana's Only Botanic Garden and Arboretum Theme Gardens + Gift Shop + Nursery

Partners with Denver Botanic Gardens and
Colorado State University "Plant Select" program

Fairy & Wizard Festival Sat., June 28

- + Activities for the kids and whole family.
- + Dress as your favorite fairy, gnome, elf or wizard.
- + Vendors, music, great food by Chili O'Brien's, parades.



High Tea July 20 & August 10

Montana's Only All American Selections Display Garden

Open Daily May through September 10 am-6 pm
Including Holidays

38 Tizer Lake Road, Jefferson City, MT

15 minutes south of Helena on I-15

www.tizergardens.com (406) 933-8789

Check out our website for summer festivals & activities

What to see

JEFFERSON VALLEY MUSEUM, WHITEHALL

The museum, located at 303 S. Division St. in Whitehall, opens for its 19th season on Saturday, May 24, and closes Sept. 15. Located in an old red former dairy and horse barn along with other display buildings, it features artifacts going back to the 1860s, when miners roamed the area or travelers used various stage coach lines. It also contains photographs and artifacts depicting domestic life, the area railroads, military service, farm life and a genealogical service. Open noon to 4 p.m. daily except Mondays, Memorial Day through Labor Day. Details: 406-287-7813. Admission is free. Donations accepted.

ELKHORN STATE PARK

The town of Elkhorn had a population of 2,500 in the 1880s until the drop in silver prices ended its boom. Left behind were two impressive structures, Fraternity Hall and Gillian Hall, which have been preserved as outstanding examples of frontier architecture. They are the only two buildings in town that are publicly owned. Respect private property while visiting this site.

It can be reached from Boulder off of Interstate 15. Go 7 miles south on Highway 69, left over a small bridge then right onto gravel road 13 miles, bearing left at each of two forks in the road.

JEFFERSON COUNTY MUSEUM, CLANCY

The museum, located in an 1890s school, has two large galleries — one on county history with exhibits on mining, ranching and railroading and the second showing traveling exhibits. The address is 9 N. Main St., Clancy. Call 406-933-5528 for details.



WHITEHALL MUSEUM

BOULDER HOT SPRINGS

This resort hotel dating from the 1800s, just south of the town of Boulder has indoor and outdoor pools for soaking and swimming. It offers massage, hiking, and wildlife viewing. It provides a place for group retreats, meetings, family reunions, and weddings. Call 406-225-4339 or go to www.boulderhotsprings.com.

Lewis and Clark Caverns State Park

Summer campfire programs

Programs are presented in the campground amphitheater at Lewis & Clark Caverns State Park. Most begin at 8 p.m. on Fridays. For details call 406-287-3541.

JUNE

13 — “Nature Songs and Facts for the Young at Heart” presented by Donna Weldon, musician, teacher and cave guide. Rekindle memories of singing songs around the campfire, 8 p.m.

20 — “Penny Post Cards and Prairie Flowers” Philip Burgess describes, through poems and stories, the journey of his grandmother, Ana Lee, and great-aunt, Dicka Lee, to eastern Montana to homestead. Burgess reads excerpts from nearly 300 post cards from relatives and friends in Minnesota sent to Anna and Dicka, 8 p.m.

27 — “Hides and Seek” Carla Wambach gives the audience hands-on access to nearly a dozen Montana animal hides and one mystery hide from elsewhere, 8 p.m., at



CRAIG ZASPEL of the University of Montana Western Environmental Sciences Department sets up a telescope for a summer campfire program at Lewis and Clark Caverns State Park.

Main Visitor Center.

JULY

4 — “Butte, the Cosmopolitan City of Montana” Thomas G. Satterly of UM-Western guides us in the mines, around ethnic neighborhoods, in the saloons, union halls,

and to the fabled “fifth floor” of the Hennessey Building. Meet a century of Butte characters, victims of disaster, and take your chances on the cowboy swings at the Columbia Gardens, 8 p.m.

11 — “The Indian Education of

“Lewis & Clark” Dr. Hal Stearns becomes Captain William Clark looking back in time. The expedition needed Native Americans, who provided knowledge, food, great generosity, stories, and significant moments, 8 p.m.

18 — “Songs We Used to Sing” Janet Zimmerman of Pony offers a musical trip down Memory Lane with audience participation. Her selections vary from folksongs to gospel, patriotic to secular. She invites you to take a book of her songs collection home, 8 p.m.

25 — “The Haunted Outdoors” Explore Montana’s haunted landscapes with author and historian Ellen Baumler of the Montana Historical Society. A collector and researcher of true tales of ghostly visitors and wandering spirits, Baumler focuses this program on haunted places in wide open spaces — a haunted hot springs, an apparition at Willow Creek, strange sounds at Brush Lake State Park, and more, 8 p.m.

See CAMPFIRE, Page 27

Twin Bridges, Ruby Valley

Calendar of events

JUNE

7 — Garage-a-Rama giant garage sale is 9 a.m. to 1 p.m. Saturday, June 7, at the Madison County Fairgrounds in Twin Bridges. Booths are \$20. Go to paddler@3rivers.net or call 406-684-5993.

29 — Women in Montana's History lecture series: Kristin Ruppel, assistant professor of Native American Studies, Montana State University speaks at 2 p.m. Sunday on "Pretty Shield, Medicine Woman of the Crow" based on the book by Frank Linderman. The programs will be held in the restored cabin of Frank and Minnie Linderman, southeast of Sheridan, on the historic "Robber's Roost" property, which is maintained by the Virginia City Preservation Alliance. All presentations are open to the public and free.

17 — Women in Montana's History lecture series: Lee Rostad, author and historian speaks at 1 p.m. Thursday on "Grace Stone Coates: Her Life in Letters" in the Linderman cabin, southeast of Sheridan, on the historic "Robber's Roost" property. All presentations are open to the public and free.

27 — Floating Flotillas Fish Fantasy, a parade on the Beaverhead River in Twin Bridges, community picnic, fun run, raffles, kids games, cow pasture golf tournament. 406-684-5656

AUGUST

13-17 — Madison County Fair and Rodeo, Twin Bridges fairgrounds, 10 a.m.-8 p.m., 4-H, FFA and open class exhibits, commercial exhibits, food vendors, petting zoo, playground for the little ones, open youth rodeo, two days of Northern Rodeo Association rodeo, horseshoe tournament, team roping, pack horse demonstration, barbecues, demolition derby and parade, Hart's Reptile World, Kids Fun Zone; barrel racing Wednesday night, breakaway roping Thursday night, Showdown Band from Missoula plays Friday and Saturday night at grandstand, police dog demonstration at 2 p.m. Friday, tribute to Benny Reynolds on Saturday night, 406-684-5824

14 — Women in Montana's History lecture series: Ellen Baumler, interpretive historian speaks at 6:30 p.m. Thursday on "Girl From the Gulches: The Story of Mary Ronan" in the Linderman cabin on the historic "Robbers Roost" property southwest of Sheridan.



Gail Banks photo

SUZI GROSE of Twin Bridges is pictured with her dog Jay Jay during the 2012 Madison County Fair's dog show.

Campfire ...

Continued from Page 26

AUGUST

1 — "Eocene Volcanic Stratigraphy and Tertiary Fault Geometry of the Southern Deer Lodge Valley" Kaleb C. Scarberry, geologist at Montana Bureau of Mines & Geology describes the Eocene Lowland Creek Volcanic Field — lavas, shallow intrusions, silicified breccias and block and ash deposits. Hear how the land changes through faulting, depression, surface exposure then Tertiary valley fill, 8 p.m.

8 — "The Status of Montana's Bats & White-Nose Syndrome Surveillance Efforts" Bryce Maxell, senior zoologist at the Montana Natural Heritage Program describes how Montana's bats face the potential arrival of White-Nose Syndrome that has already decimated bat populations in eastern North America, 8 p.m.

15 — "GPS: Are We There Yet?" Steven Hamilton, science teacher and environmental consultant gives a hands-on presentation and allows you to use a GPS unit. Bring a GPS if you own one, 8 p.m.

22 — "Montana Raptors" Becky Kean, director of Montana Raptor Conservation Center, shares her knowledge of birds who kill animals and eat them. She hopes to bring a great horned owl, northern saw whet owl, turkey vulture, 8:30 p.m.

29 — "Star Gazing Under the Caverns Sky" Thomas Satterly, Sheila Roberts and Craig Zaspel, members of the University of Montana Western Environmental Sciences Department, present their interpretation of the evening sky using several telescopes, 8 p.m. Come early to set up camp before the program, which will last into the late hours of the night. Group camping will be included and a pancake breakfast provided for the reservation fee (\$15). Call 406-287-3541 for details and reservations.

Cowboy Boots & Buckin' Chutes

EVENTS INCLUDE

Car show, team roping, barrel racing, 4-H shows, open class shows, police dog demonstrations, retail and food vendors.

Home Town Tribute to Benny Reynolds

Sat. Aug 16 @ 8:30 during NRA Rodeo.

Aug 9-17

Aug 9 - 4-H Horse Show
Aug 10 - Youth Rodeo
Aug 14-17 - Hart's Reptile World
The Kids Fun Zone

Madison County/Twin Bridges Fair & Rodeo

Wed. Aug 13 - Barrel Racing - 6pm
Thurs. Aug 14 - Jacobs Breakaway Roping - 6pm
Fri. Aug 15 - NRA Rodeo Slack - 8am
Police Dog Demos - 2pm
Pack Horse Demo - 4pm
NRA Rodeo - 7pm
Sho Down Band Following Rodeo
Sat. Aug 16 - Jacobs Team Roping - 9am
Car Show - Jessen Park - 10am
NRA Rodeo - 7pm
Tribute @ 8:30pm to Benny Reynolds

MADISON COUNTY
FAIR & RODEO

AUGUST 13-17, 2014
MADISON COUNTY FAIR & RODEO
TWIN BRIDGES, MONTANA

406-684-5824 • www.madison.mt.gov • mcfair@3rivers.net

Virginia City

Calendar of events

MAY

23 - Sept. 20 — Brewery Follies opens season at H.S. Gilbert Brewery. Show times are 4 p.m. and 8 p.m. with two new shows. Call 800-829-2969, Ext. 3 for reservations.

31 — Virginia City Players opens its 65th season at the Opera House, 19th century melodrama is followed with vaudeville acts. Show times are 2 p.m. Wednesday, Thursday, Saturday and Sunday; and 7 p.m. Tuesday, Wednesday, Friday and Saturday. Tickets are: \$18 adult, 16\$ for college students/military/seniors; and \$10 for children. Call 800-829-2969 or visit www.virginiacityplayers.com.

JUNE

7-8 — Living History Weekend: The Murder of Deputy Dillingham, Nevada City, 406-843-5247

13-15 — Irish Weekend, family friendly, music, painting a green stripe on Wallace Street, parade, food, Irish culture and history, 406-933-5759 or calnan@bresnan.net.

14-15 — Living History Weekend: George Ives Trial and Hanging, Nevada City, 406-843-5247

20-22 — Events of the Spring Grand Victorian Ball, 1864, 1865 end of war between states, everyone is invited to participate and era clothing is requested, live music, tickets by reservation only.

■ Friday, 4 p.m., high tea in Bennett House, no charge.

■ Saturday, 1 or 2 p.m. dance practices; 5:30 p.m. ballroom opens for check-in and photos; promenade through town precedes dance; 7 p.m. grand march followed by introductions, singing of "My Country Tis of Thee," invocation and dancing begins; 9:30 p.m. light repast, 11 p.m. farewell waltz.

■ Sunday, 9 a.m. special service at St. Paul's Church from the 1879 prayer book.

Period clothing available



KURT WILSON / MISSOULIAN

DURING THE 1920s, signs marked the road connecting Virginia City and Bannack with the dreaded vigilante numbers 3-7-77.

for purchase at Rank's Mercantile for men and women, 406-843-5454 or on loan from the Vintage Attic in Ennis at 406-682-4935. Tickets: single \$35, couple \$60, children 15 and under \$10. Call Karen Shores 406-682-4935 or 406-431-0714 or visit www.virginiacitygrandvictorianball.com.

21 - 22 — Living History: The Hanging of Red Yeager, Nevada City, 406-843-5247; lantern tour Saturday

21 - 22 — Brothel Days at Bale of Hay Saloon: On Saturday Leona Stredwick speaks at 1 p.m. on prostitution in gold camps; five person teams hold bed races at 4 p.m.; costume party is 9 p.m. with Unusual Suspects band from Bozeman. On Sunday Ellen Baumler lectures on "Montana and the Landscape of Prostitution" at 1 p.m.

26-27 — Living History: Cyrus Skinner and Alex Carter, Nevada City

27-29 — Virginia City Art Show: Montana and regional artists display



MONTANA STANDARD FILE PHOTO

VISITORS STROLL along the streets in Virginia City.

work on the boardwalk and in the community center 10-6 p.m. Friday, 10-7 p.m. Saturday, and 10-4 p.m. Sunday. Artists reception Friday. Artists quick draw and auction at 7:30 p.m. Saturday in Elks Lodge.

28-29 — Living History: Con Orem and Hugh O'Neil, Nevada City, 19th century boxing exhibition on Saturday, 406-843-5247

29 — Women in Montana's History lecture series: Kristin Ruppel, Montana State University speaks at 2 p.m. Sunday on "Pretty Shield, Medicine Woman of the Crow" based on the book by Frank Linderman. The programs will be held in the restored cabin of Frank and Minnie Linderman, southeast of Sheridan, on the historic "Robber's Roost" property, which is maintained by the Virginia City Preservation Alliance. All presentations are public and free.

JULY

4 — Professional fireworks display on Virginia City's Boot Hill at dusk

4 - 6 — History: Nevada City celebrates Fourth of July

5 — Kid's Fishing Derby

12 — Second Saturday Farmers Market, 11 a.m. to 5 p.m., organic artisan breads from a brick oven, cakes, cookies, jams, organic local seeds, local eggs, garlic, honey, books, art, pottery, woodwork, fabric art, metalwork, across from Opera House, 406-843-5833.

12 - 13 — Living History: The Great Duel, Nevada City, lantern tour Saturday, 406-843-5247

17 — Women in Montana's History Lecture Series: Lee Rostad, author/historian speaks at 1 p.m. Thursday on "Grace Stone Coates: Her Life in Letters" in the restored Linderman cabin, southeast of Sheridan, on the historic "Robber's Roost" property. All presentations

Virginia City ...

Continued from Page 28

are public and free.

18 - 19 — Dog & Grog Montana Microbrew Festival: Draught Works of Missoula brings the brew Friday starting at 5 p.m. and Sugar Daddies play from 9 to midnight. Ten breweries are featured Saturday with music, noon to 7 p.m. Comstock Lode plays classic rock and roll at 9 p.m. in the bar.

18-20 — Daylight Creek Gathering: Shoshone-Bannock tribes return to their native lands. This gathering celebrates all people and includes a community feast, drumming, dancing, and more. All events are free, family friendly, drug and alcohol free. Bring chairs, blankets, dark glasses for an afternoon and evening of fun. Tribal vendors will offer arts and crafts, beadwork, leather goods, music and jewelry.

Please ask permission to take photos or recordings. Men's dancing includes traditional, fancy, and grass dance. Teen boys perform traditional and fancy dances. Women and teen girls perform traditional, fancy shawl, and jingle dress dances. The youngest are junior dancers, children 12 years old and under and tiny tots, children 6 years old and under.

19 - 20 — Living History: Steve Marshland, Nevada City, 406-843-5247

24 — Christmas Eve in July at the Opera House, Virginia City Players perform a Christmas-themed vaudeville show at 7 p.m., (800) 829-2969 Ext. 2.

26 — Old Virginia City Flea Market — Contact Joe or Gloria for details and hours and on having a booth, 406-843-5544.

26 - 27 — Living History: Cyrus Skinner and Alex Carter, lantern tour Saturday, Nevada City, 406-843-5247

30 - Aug. 2 — The dedication of the 4-H Shooting Sports clubs from around the territory will be showcased during the tournament this weekend.

AUGUST

2 - 3 — Living History: Miners Court, Nevada City, 406-843-5247

8 - 10 — Road Agent Rally: antiques, customs, rods, rats, bikes, trucks and anything on wheels for a weekend of fun. Registration is \$20 and gets you welcome and coupon bags for restaurants, shops, and other venues. Giveaways and 50/50 drawings are throughout the weekend. Register at Virginia City Depot, 406-843-5900.

9 — Vigilante Music Festival, bands from noon to midnight Saturday; family friendly. Motorcycle Poker Ride for Charity begins in Belgrade and ends with the last card drawn at Bale of Hay Saloon in Virginia City. Bale Beer Fest at Bale of Hay Saloon. Second Saturday Farmers Market, 11 a.m. to 5 p.m., food, seeds, books, art, pottery, woodwork, fabric art, metalwork, across from Opera House, 406-843-5833.

9 - 10 — Living History: Murphy and Brady, lantern tour Saturday, Nevada City, 406-843-5247

14 — Women in Montana's History lecture series: Ellen Baumler, interpretive historian speaks at 6:30 p.m. Thursday on "Girl From the Gulches: The Story of Mary Ronan" in the Linderman cabin on the historic "Robbers Roost" property southwest of Sheridan.

15 - 17 — Events of the Grand Victorian Ball, 1864, 1865 end of war between states, everyone is invited to participate and era clothing is requested, live music, tickets by reservation only. (See June 20-22 above for details.) 406-682-4935.

16 - 17 — Living History: The Flour Riot, Nevada City, 406-843-5247

22 - 24 — Bozeman Trail Commemorative Chuckwagon Cookoff — Friday, chuck wagons arrive, judging of wagon and campsite at 7 p.m. On Saturday competition begins, dinner tickets \$15 per person, visitors can visit wagons and ask questions; presentation on Bozeman Trail at 3 p.m.; live music before and during dinner; food judging at 4:45 p.m.; dinner is at



WALTER HINICK / THE MONTANA STANDARD

CAROL MCCAFFREE, left, of Roundup and Julie Munson of Clancy make fresh home-made biscuits during the Chuckwagon Cook-off in Virginia City last August.

5 p.m.; awards, presentations, music, dancing at 7 p.m. On Sunday - old fashion church service at ball park at 8 a.m.; chuck wagon breakfast 9-10 a.m., \$5 per plate or \$15 per family.

23 - 24 — Living History: Women of the Gulch, Nevada City, 406-843-5247

30 — Labor Day Weekend Horseback Poker Ride, registration is 8:30-10 a.m. at Bale of Hay Saloon, admission \$15 per rider and includes a meal after the ride, also a poker walk around Virginia City, 406-843-5700.

30 - Sept. 1 — Dr. Buck's Wild West Festival — Celebrities and stuntmen perform riding and roping tricks, shooting demonstrations. Virginia City Players end season Monday, Sept. 1.

30 - Sept. 1 — Living History: Jack Slade's End, lantern tour Saturday, Nevada City, 406-843-5247

SEPTEMBER

5 — Save Our Buildings fundraiser for VC Rural Fire Department at Bale of Hay Saloon, dinner 7-8 p.m., silent auction and live auction of 10 historic buildings at 8 p.m. (You don't get to take the buildings home but become their sponsor for the year.) Adults \$25, kids 12 and under \$5, 406-843-5454.

6 - 7 — Living History: Beans, Bacon and Bannack Bread, Nevada City, 406-843-5247

13 - 14 — Living History: Trails End, Nevada City, 406-843-5247

20 — Brewery Follies closing night.

OCTOBER

24 - 25 — Living History: All Hallow's Eve, Nevada City, 406-843-5247



VIRGINIA CITY PLAYERS are pictured in the finale to a Vaudeville show.

Virginia City Players

The Virginia City Players will perform three shows during the 2014 season. After intermission the players return with their varied, vigorous, vagary of vivacious vaudeville variety acts. Show times are 7 p.m. Tuesday, Wednesday, Friday and Saturday with matinees at 2 p.m. Sunday, Wednesday, Thursday and Saturday. Call 800-829-2969 for details and reservations; www.virginiacityplayers.com

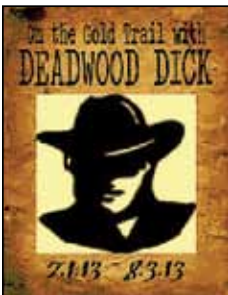


"The Cat and the Canary,"

May 31 - June 29 — Five distant cousins are forced to spend the night in haunted Glenclyff Manor to hear the reading of their great uncle's will. Frightened by spirits and shadows, they learn there is also an escaped lunatic on the loose, who thinks he is a cat.



"On the Gold Trail with Deadwood Dick," July 1 - Aug. 3 — Deadwood Dick, the masked robber of the Black Hills, makes a surprise visit to Alder Gulch in Montana Territory. Famous characters, Calamity Jane and Wild Bill Hickok, join in the mayhem of abduction, mistaken identity, and hilarity! Can anyone stop the underhanded schemes of the local hooligan Black'N Red? The play is based on the dime novels of the late 1800s.



"Dracula," Aug. 5 - Sept. 1 —

Follow the journey of the "Prince of Darkness," Count Dracula, as he pursues his goal of inhabiting London and turning Mina Harker and Lucy Westerman into eternal companions. This is a gothic battle between Dracula and a select group of men and women led by Professor Van Helsing. Will they be able to stop this demon in his tracks or will Dracula's otherworldly powers reign?



Brewery Follies

VIRGINIA CITY — The Brewery Follies return to Virginia City's historic H.S. Gilbert Brewery for another summer season of belly laughs, celebrity impersonations, sketch comedy and plenty of music.

The season starts in May 2014, and will run through Saturday, Sept. 20.

Two new shows have been developed for the 2014 season and are performed at 4 p.m. and 8 p.m.

The mission of the Follies is simple: to make you laugh as they make fun of just about every aspect you can think of in today's political and social landscape.

However, you might want to find a sitter for the kids, because with laughter and beer on tap some of the Follies antics can be pretty irreverent.

The nasty "four-letter words" are left out, but the jokes might mean what the words mean. The Brewery Follies is rated well beyond PG-13.

Call 800-829-2969 Ext. 3 to confirm performance dates and for reservations.



HILARIOUS COMEDY CABARET IN HISTORIC VIRGINIA CITY MT THE BREWERY FOLLIES



MAY 23 - SEPTEMBER 20, 2014

SHOWTIMES 8PM & 4PM

RESERVATIONS RECOMMENDED

800-829-2969 EXT. 3 TICKETS \$18

discover Yellowstone this summer

*A herd of grazing bison, elk crossing a river, a lone wolf howl, a large grizzly digging amidst waves of wildflowers. Set against a backdrop of thumping thermals, steaming geysers, and gushing waterfalls. This year, why not discover the magic of Yellowstone Park? Start your Yellowstone adventure in **West Yellowstone, Montana!***



Family friendly lodging and activities: www.yellowstonedestination.com

Your One Stop Party Shop!



SUPER SALE LIQUOR DISCOUNT!

OPTIONS FOR ALL!

We carry your favorites in a variety of sizes, from 1/2 gallons to minis! We are happy to help you get the best for your get together, no matter the size.

MONTANA MADE!

We carry a great selection from local Montana Distilleries

OPEN FOR YOU!

We are open 8am through 2am, 7 days a week, 365 days a year!

AND SO MUCH MORE!

We also offer a casino, best machine selection, exclusive games and the players club!

FIND US IN THESE GREAT COMMUNITIES!

BELGRADE



BILLINGS



BOZEMAN



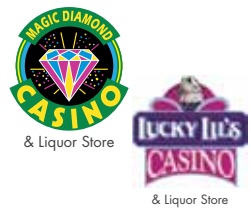
BUTTE



GREAT FALLS



MISSOULA



STAY & SAVE Free Gas!!



Stay at any of these fine hotels & receive a

\$25 GIFT CARD



Butte
Dillon
Shelby



Helena



Belgrade



Miles City
Idaho Falls



Big Timber
Columbus
Conrad



Great Falls
Hamilton
Havre

800.442.4667 US & CANADA

www.townpumphotels.com

Must request the "Stay & Save" package. Rates start at \$89⁰⁰ - \$179⁰⁰ & vary depending on location or time of the year. Call or visit our website for details.