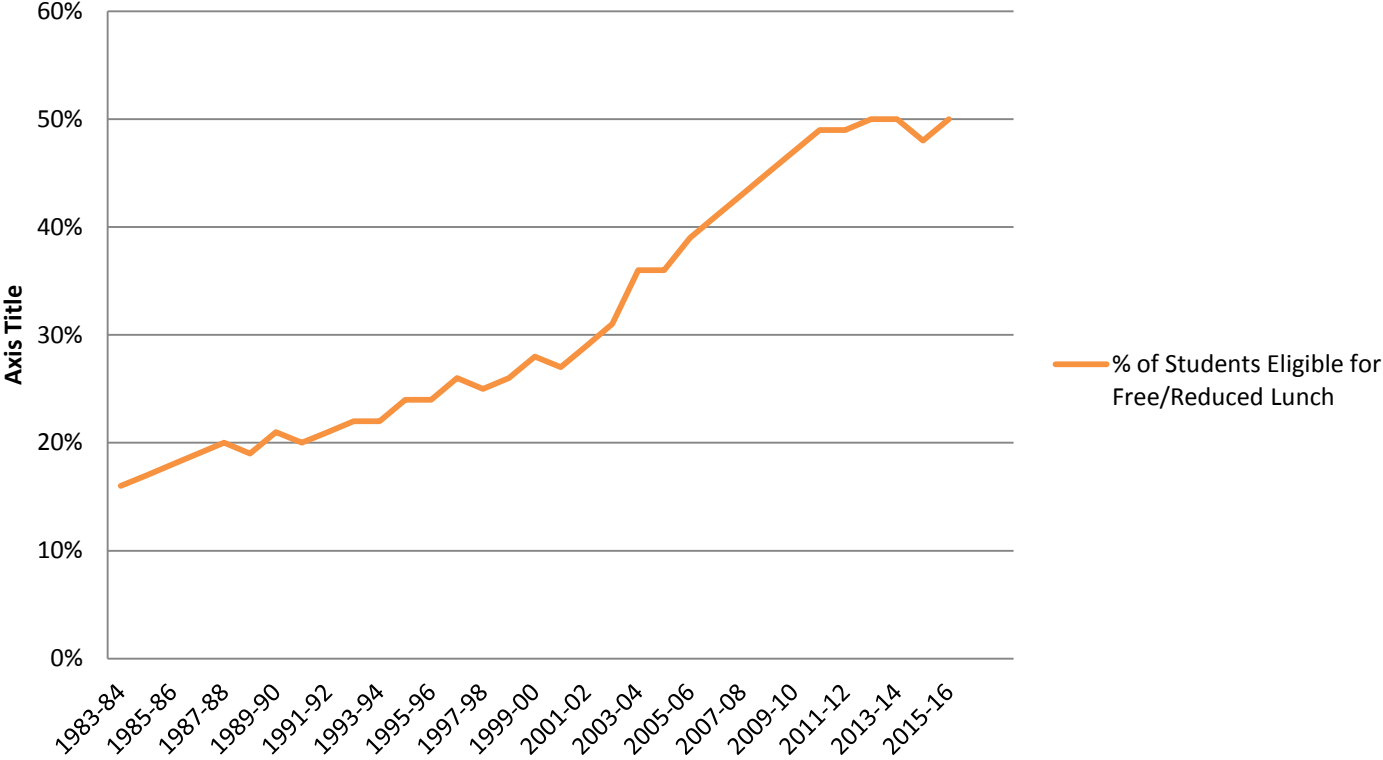


Economic Indicators 2011-2015

Racial Disparities

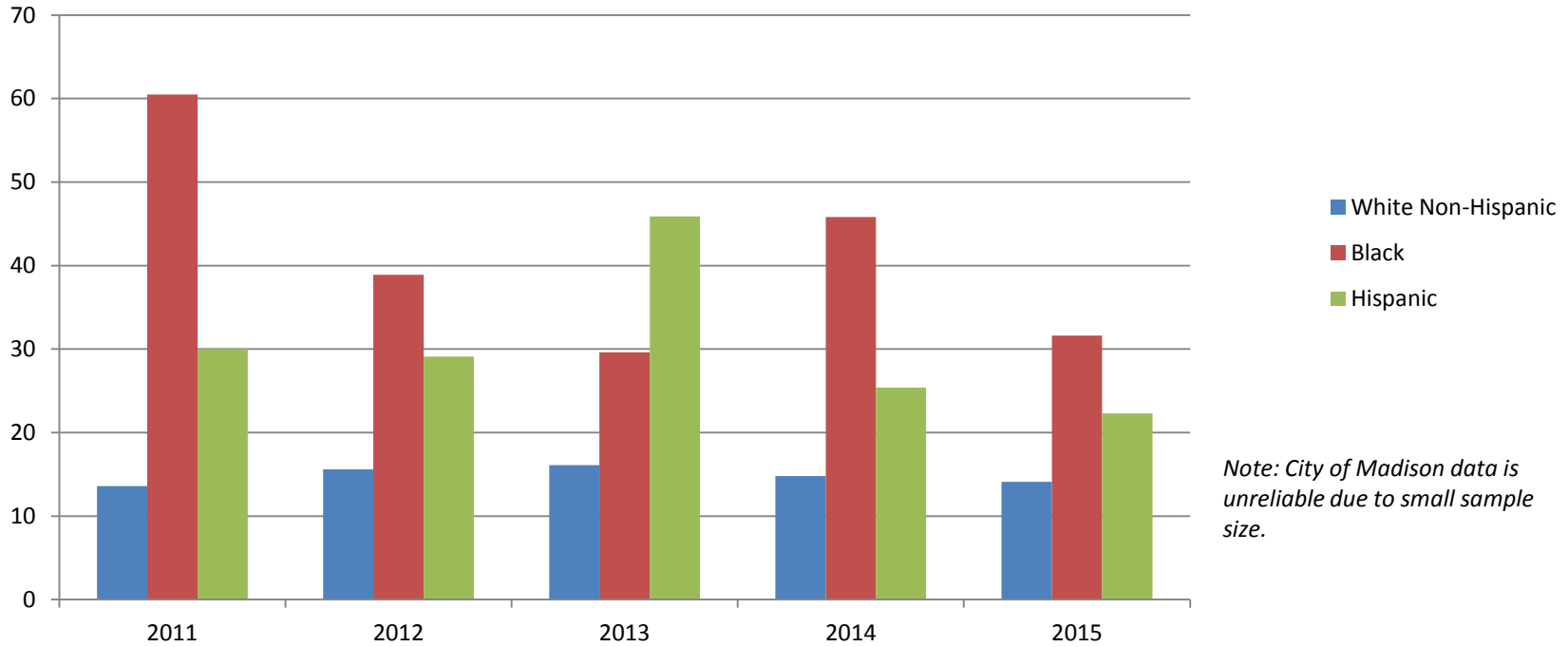
Madison Metro School District

% of Students Eligible for Free/Reduced Lunch



City of Madison

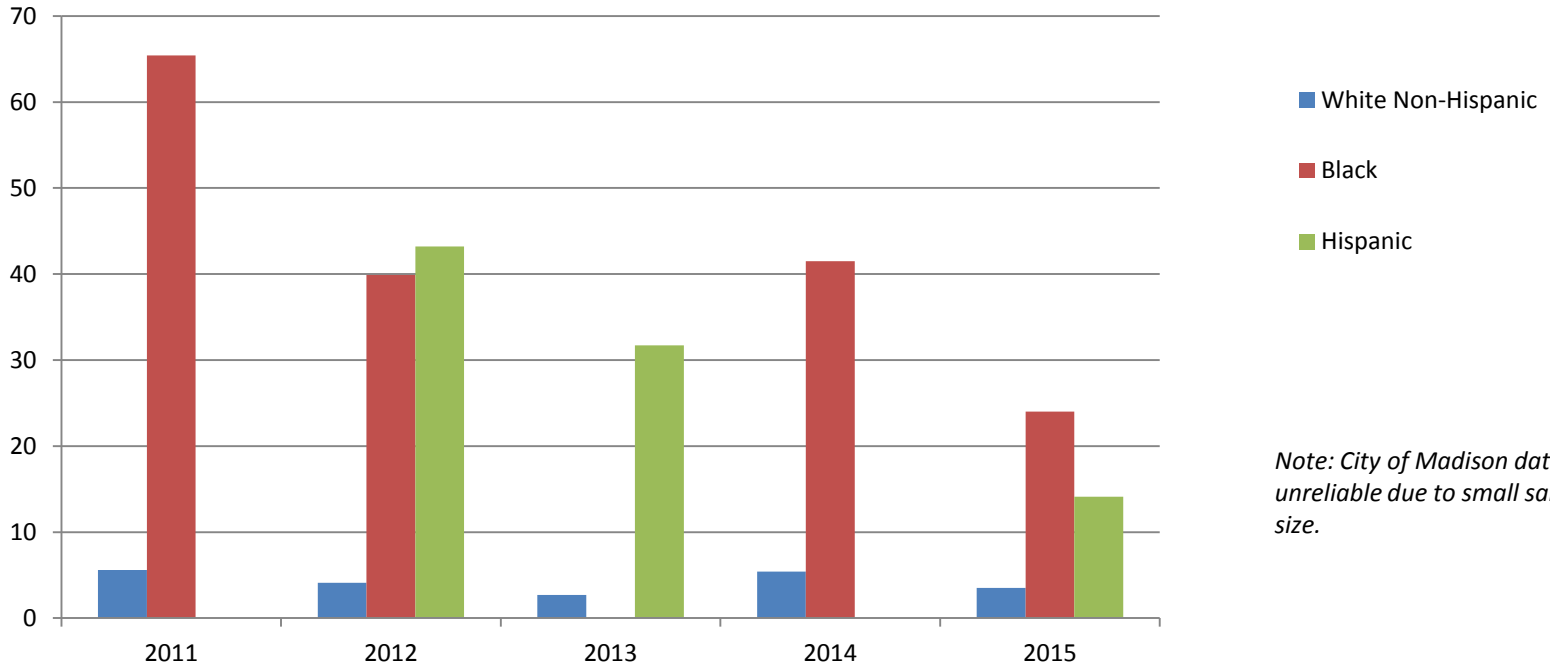
% Population in Poverty, City of Madison
(Table S1701 - ACS 1-YR Data)



Note: City of Madison data is unreliable due to small sample size.

City of Madison

% Families in Poverty, City of Madison
(Table S1702 - ACS 1-YR Data)



Note: City of Madison data is unreliable due to small sample size.

City of Madison

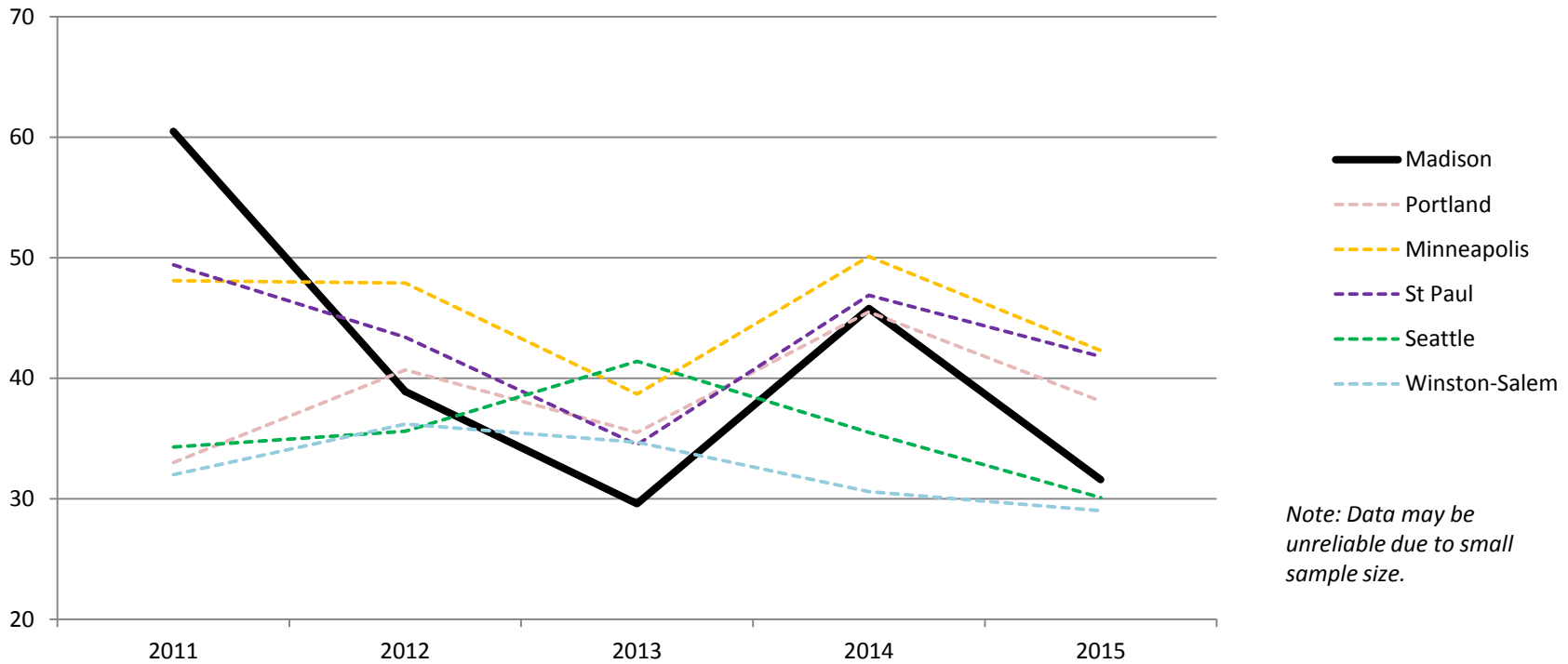
Median Household Income, City of Madison (Table S1903 - ACS 1-YR Data)



Note: City of Madison data is often unreliable due to small sample size. However, the change in median income for Black Households is statistically significant.

Comparison with other Cities

% Poverty for Black Population
2011-2015 ACS 1-YR Data, Table S1701

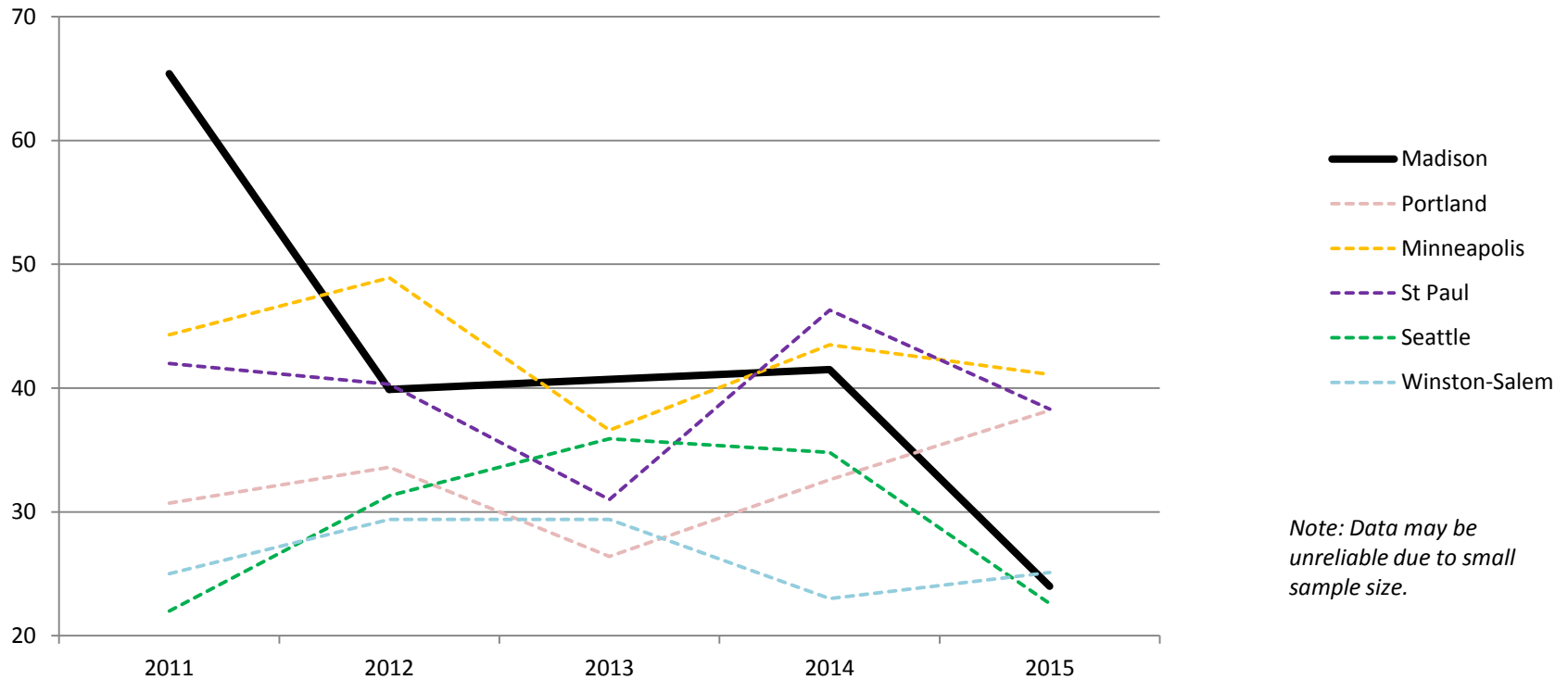


Note: Data may be unreliable due to small sample size.

Comparison with other Cities

% Poverty for Black Families

2011-2015 ACS 1-YR Data, Table S1702

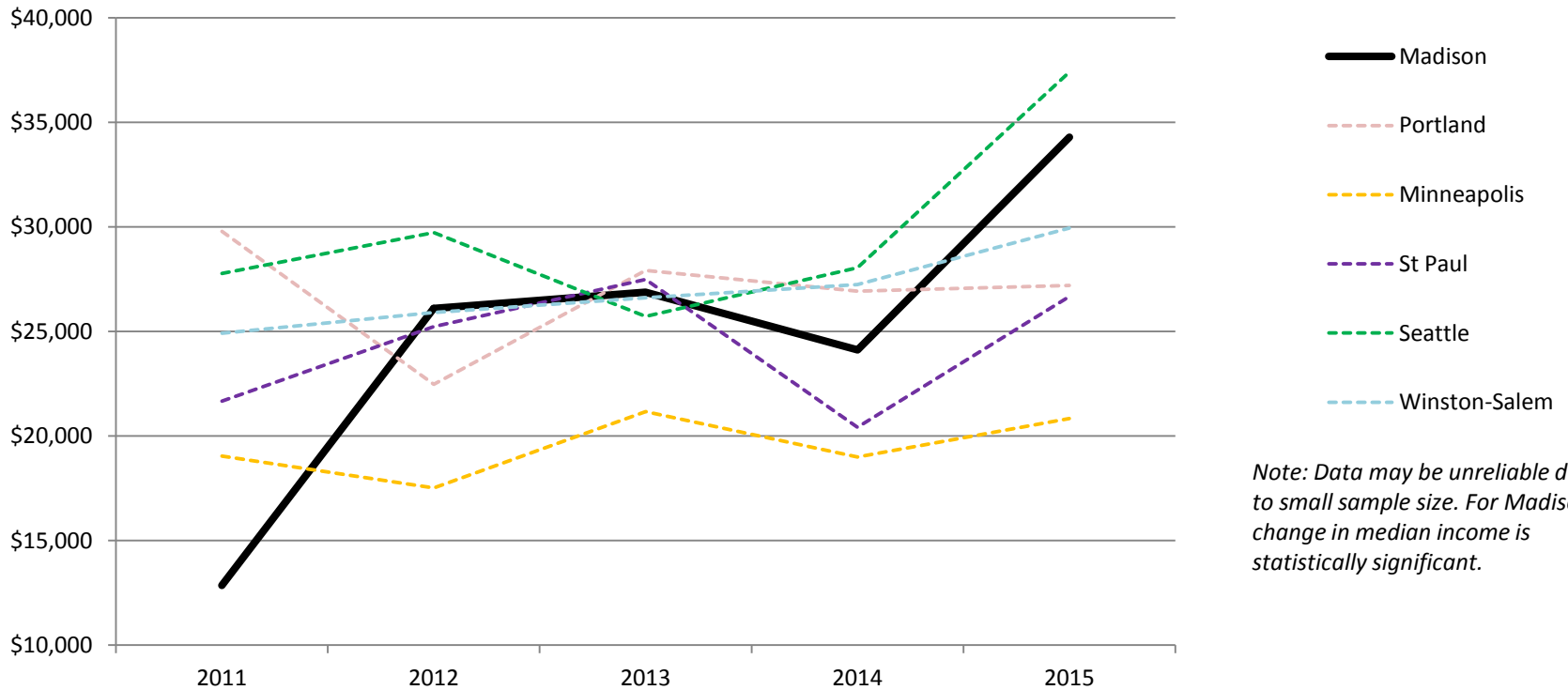


Note: Data may be unreliable due to small sample size.

Comparison with other Cities

Median Income for Black Households

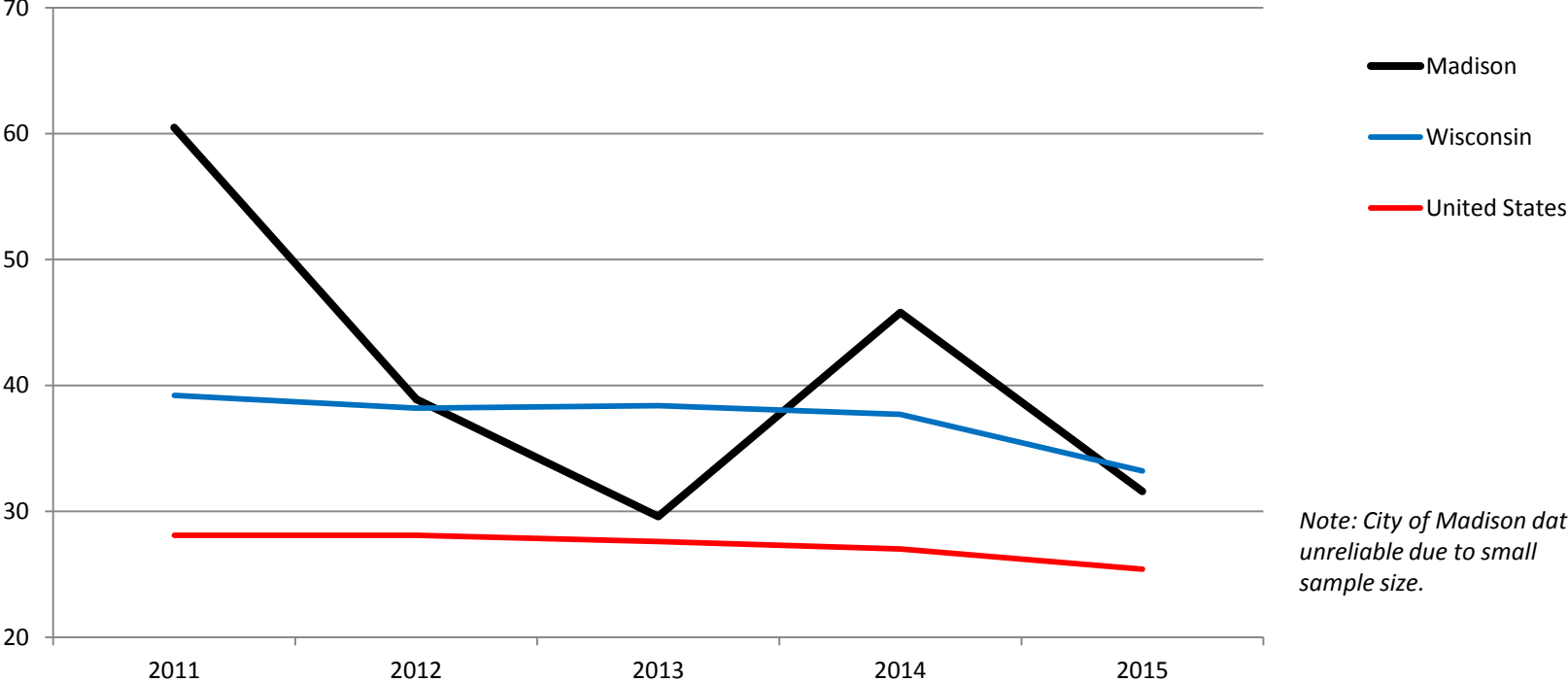
2011-2015 ACS 1-YR Data, Table S1903



Note: Data may be unreliable due to small sample size. For Madison, change in median income is statistically significant.

Comparison with State and Nation

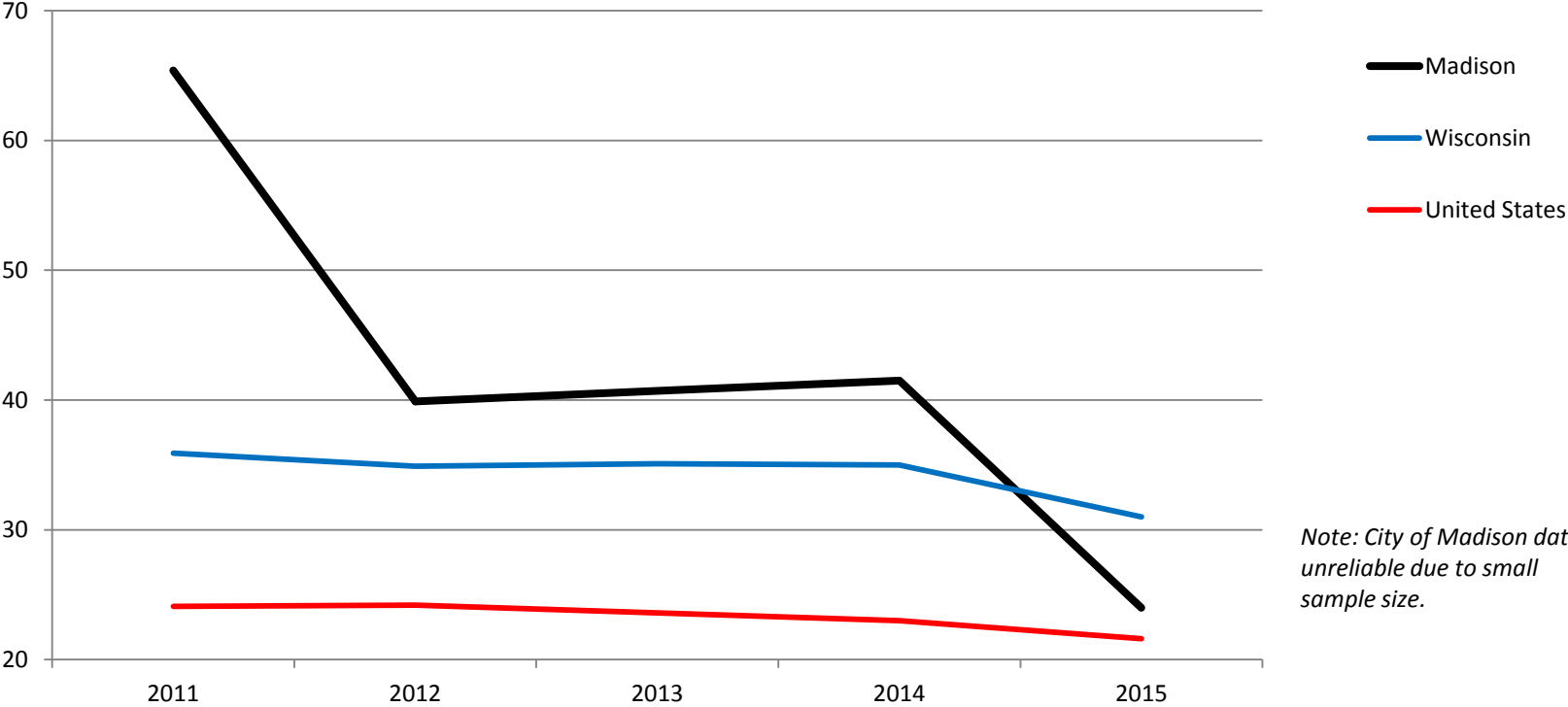
% Poverty for Black Population
2011-2015 ACS 1-YR Data, Table S1701



Note: City of Madison data is unreliable due to small sample size.

Comparison with State and Nation

% Poverty for Black Families
2011-2015 ACS 1-YR Data, Table S1702

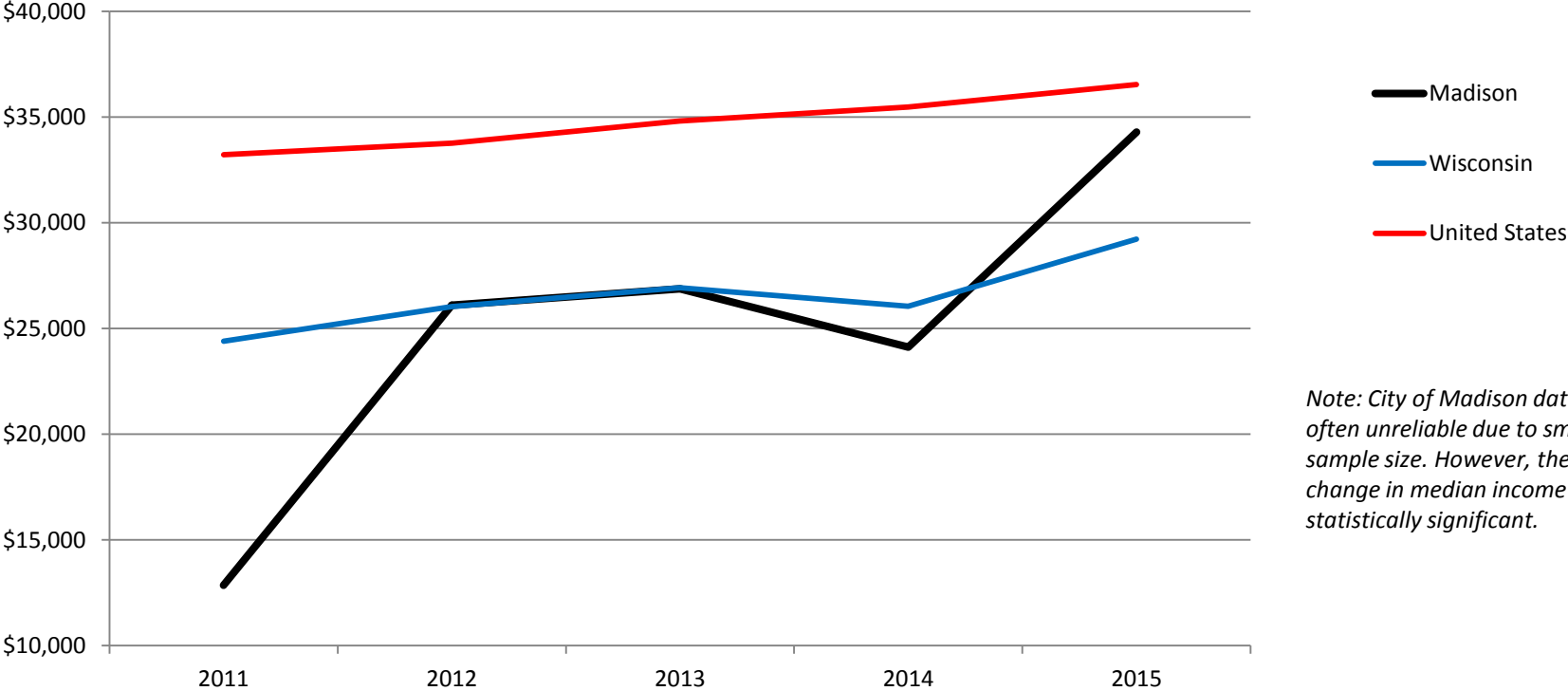


Note: City of Madison data is unreliable due to small sample size.

Comparison with State and Nation

Median Income for Black Households

2011-2015 ACS 1-YR Data, Table S1903



Note: City of Madison data is often unreliable due to small sample size. However, the change in median income is statistically significant.