

Joe Wojcich,
owner of Tempe
Camera, displays
an assortment of
photos and prints,
one of many
services his business
provides.

East Valley Home-Grown Business Leaders

A SPOTLIGHT ON LOCAL BUSINESS

**An advertising
supplement with sponsored content
from the following businesses:**

ABC Hearing Center • Apex Wellness Studio • Arizona Bank & Trust
Classic Car Spa • Fynes Audiology • Greulich's Automotive Repair
Jomar Association Services, An Associa Company
Lutheran Thrift Shop • Madison Avenue Salon & Day Spa
Magic Touch Mechanical • Mountain View Funeral Home & Cemetery
Dr. Paul Sandstrom, DDS • Pete's Fish & Chips Inc.
Rural/Metro Fire Department and Southwest Ambulance
Science Care • St. Vincent de Paul Thrift Store
Stewart Travel • Strong Tower Insurance Group
Ted's Shooting Range • Tempe Camera • Tri-City Audiology • Whitfill Nursery

A special
publication
of the

**East Valley
Tribune**
EastValleyTribune.com

Wednesday, May 29, 2013

TED'S SHOOTING RANGE

Indoor Shooting Range Offers Family-Friendly Fun and a Chance to Perfect Shooting Skills

For seasoned gun fans or for first-timers, Ted's Shooting Range offers indoor target-shooting in a fun, family-oriented atmosphere where shooters can perfect skills, meet new friends and learn from others.

Owned by a five-member partnership, including the range's namesake, Ted Williams, Ted's Shooting Range opened nearly three years ago. Several other locations were considered before they settled on a site in Queen Creek.

"Ted had been looking for a good place to put a range, where we could build a

neighborhood-type shooting range, and where people could come as families."

The range is operated by Amanda Krugen, Manager/Owner, with the assistance of co-owner Liz Robinson.

"Ted's is one of the few ranges that is actually run and part-owned by women," Robinson said. She said her own love for shooting started years ago. "My father liked shooting and got me involved in it when I was young."

"Shooting is a sport, and it's a fun one," Robinson added. "People do get hooked on it."

At Ted's, shooters pay by the hour to use the range. Mondays and Wednesdays are Ladies' Days, and women are treated to free range time on those days.

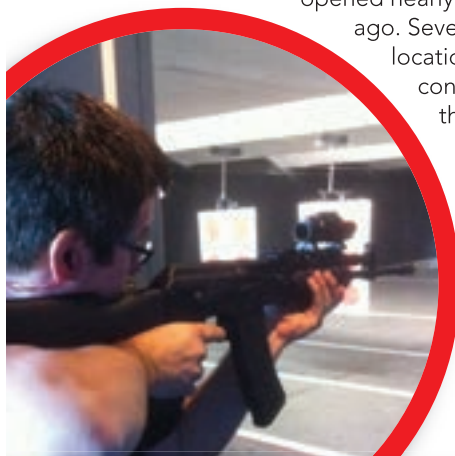
Discounts are given to military and former military personnel. Ted's also offers membership packages and opportunities to rent the range for an evening. Ted's is also a retail store.

Several classes are offered, including a concealed carry class. An introduction to pistols class is a 90-minute class



that teaches safe gun handling practices, gun mechanics and how to clean your gun. Included is one hour of range time and two additional hours of range time and free gun rental.




Located at 18395 S 186th Drive, Suite 106, in Queen Creek, Ted's Shooting Range is open Monday through Saturday, 9 a.m. to 8 p.m., Sundays, 11 a.m. to 5 p.m. For information and pricing, visit www.TedsShootingRange.com or call 480-840-9202.



TED'S SHOOTING RANGE



CLASSES OFFERED

-  **Intro to Pistol Shooting**
-  **Home Defense**
-  **Arizona CCW (Concealed Weapons Permit)**

MEMBERSHIP PACKAGES

LADIES DAY All Day Mondays & Wednesdays

-  **LADIES, LANE TIME IS ON US!**
Bringing a guy along? His lane time is only \$10!

2 FOR 1 RANGE TIME & FREE GUN RENTAL

***Must be 18 or older for range time. Must be 21 or older for gun rental.**

*Customers under 18 must be accompanied by an adult 21 or older. Must present coupon for range time and rental. Federal law prohibits the sale, purchase or rental of firearms and/or ammunition to any person under age 21.

18395 S. 186th DRIVE, SUITE 106 | QUEEN CREEK, AZ 85142

480-840-9202 | www.tedsshootingrange.com

OPEN MONDAY-SATURDAY 9AM-8PM; SUNDAY 11AM-5PM | LAST CALL ONE HOUR BEFORE CLOSING





Whitfill Nursery

SERVING THE VALLEY SINCE 1946

knowledgeable staff, quality inventory, and a neighborhood atmosphere are what set Whitfill apart from other plant nurseries.

In 1983 Brian opened Whitfill's Gilbert location at Cooper and Guadalupe. The Gilbert employees carry on the Whitfill tradition of great customer service while supplying and specializing in delivery and installation of trees, including citrus, shade, flowering and desert trees. The Whitfill family grows and installs trees in a variety of sizes from 15 gallons to giant specimen trees in 96-inch boxes that weigh 28,000 pounds.

"At Whitfill's we grow a large percentage of our own trees and now we have over a thousand acres of tree production farms, groves and orchards in Arizona. Gilbert remains one of our three retail stores because it is a great location, it's a friendly community and we have been part of that community since 1983," Brian said.

The nursery prides itself in providing great tasting fruit trees. It sells a variety of citrus and fruit trees including peach, oranges, lemons, tangerines and plums.

Whitfill's family of employees have hundreds of years of combined experience in the valley and are anxious to share their own love of plants with new as well as seasoned gardeners. Whether it's choosing the right annuals or a complete landscape design, the staff at Whitfill has the answers.

It takes knowledge to create a landscape plan that fits the weather and drought tolerance necessary to sustain plant life in the Arizona desert. The nurserymen at Whitfill Nursery are the best resource for plant and tree selection, maintenance and landscape design in Arizona.

"For more than 60 years, Whitfill Nursery has been serving valley neighborhoods. We consider it a privilege and are grateful to our long term customers," Brian said. "Our nurseries are worth the drive from anywhere. Stop in any one of our garden nurseries and experience the difference."

Whitfill Nursery: Brian Blake

In 1965 Brian Blake began working with his grandfather at the original Whitfill Nursery on Glendale Avenue at the age of 5.

From his early days at the nursery with his grandfather, Les Whitfill, Brian developed a passion and desire to grow plants and help customers. That passion led him to take ownership of Whitfill Nursery, the family business, in his 20s and work to build a large and loyal customer base.

Brian learned from his grandfather the value of knowledge about plants and great customer service that extends to the Whitfill family to this day. Friendly,

WE'LL DO THE DIGGIN'!

NOW'S THE PERFECT TIME TO PLANT - HEAT LOVIN' DESERT TREES!

<p>GIANT</p> <p>Thornless Mesquite Thornless Palo Verde Acacia • Palobrea • Ash Live Oak • Sissoo • Elm</p> <p>\$599</p> <p>36" Box Trees Up to 15' Tall</p> <p>PLANTED & GUARANTEED</p>	<p>HUGE</p> <p>Thornless Mesquite Thornless Palo Verde Acacia • Palobrea • Ash Oak • Sissoo • Elm</p> <p>\$199</p> <p>24" Box Trees Your Choice</p> <p>PLANTED & GUARANTEED</p>	<p>MASSIVE</p> <p>SHADE TREES Ash • Elm • Pines Mesquite • Pistachio Palo Verde</p> <p>\$1250</p> <p>48" Box Trees Up to 25' Tall</p> <p>PLANTED & GUARANTEED</p>
---	--	--

WORTH THE DRIVE FROM ANYWHERE! VALLEYWIDE DELIVERY JUST \$50!

<p>MAIN TREE FARM 2647 E. Southern Ave. (Phx) 602-268-9096</p>	<p>EAST VALLEY Cooper (Stapley) & Guadalupe 480-892-2712</p>	<p>NORTH PHX /SCOTTSDALE 824 E. Glendale Ave. 602-944-8479</p>
---	---	---

All offers limited to stock on hand. • No other discounts apply. • Not valid on previous sales. Multi trunk, jumbo size, and field dug trees slightly higher.
STORE HOURS: MON-SAT 8-5:30, SUN 10-4 • LICENSED, BONDED & INSURED • RESIDENTIAL - C-21 - 125878 • COMMERCIAL - A-21 - 125879

SALE ENDS 7/1/13



Family Owned & Operated Since 1947



Pete's Fish and Chips: Kathy Adams

Kathy Adams has been a part of Pete's Fish and Chips until she was able to hold a potato and a peeler. Her father, Peter M. Grant, started the fast-food restaurant 66 years ago.

In 1947, after receiving a military medical discharge, Grant moved to Arizona to live in a hot and dry climate. With only \$900 cash in his pocket, Grant traveled to Phoenix with his wife, Ruth. Instead of following through on his plan to become a teacher, he invested his cash into a dream he had of opening a fish and chips store. By the end of the first year he opened three more locations, which later grew into the current eight locations.

The store has two East Valley locations in Mesa and Tempe. Grant saw great potential in the valley and knew that Arizona State University would be huge one day.

"We all started as children and then in high school it was our summer job. Then we all went our separate ways, got married, had children and ended up working again for my dad at the different locations," said Adams.

In December of 1987, tragedy struck leaving Grant's four girls to run his empire. He was murdered in his East Phoenix apartment at the age of 72. Adams had been working side-by-side with her father and was able to keep the business alive through what he taught her.

Today Kathy Adams and her sister, Pat Foster, operate the eatery's eight locations.

Pete's Fish and Chips serves a variety of fast-food options; including seafood, burgers, hot dogs, chicken, burritos, fresh hand-breaded onion rings and shrimp, as well as scallops, crabettes and mild white fish. All

are served with their famous red sauce that is made in house.

"Arizona born and raised, we have been around since 1947. So we are working on fourth generation customers," said Adams. "We have a very simple menu. We don't change, that's one thing our dad instilled in us. Once we have something good and something works, don't change it."

Adams loves welcoming new customers to Pete's Fish and Chips whether they are fish eaters or love chicken tenders and fried burritos.

"We welcome that first time customer, and we will get them hooked," said Adams. "There is no doubt that we will get them hooked."



BEST LUNCH UNDER \$7.00 (Total Bill)

Thank You For Pete's Sake!

THE ORIGINAL FISH & CHIPS



Family Owned & Operated Since 1947



44 oz. Soda

89¢

Now thru Aug. 31, 2013

CUSTOMER APPRECIATION SPECIAL

Buy 1 Super Seafood Combo and 2 Drinks of any size, receive a 2nd Super Seafood Combo

50% OFF

Exp. 6/30/13

22 S. Mesa Dr., Mesa • 480-964-7242 | 1017 E. Apache, Tempe • 480-968-6265

www.petesfishandchips.com

S&E SANDSTROM & EDWARDS DENTISTRY

Sandstrom & Edwards Dentistry: Paul Sandstrom

For twenty-five years, Dr. Paul Sandstrom has been serving the adult community of the East Valley. After studying dentistry at Boston University, Sandstrom and his wife moved to Arizona and took over a dentistry practice.

"Actually I got out of school and worked in a couple different offices. Then I met a guy who was thinking of retiring and I started working with him. Then he did retire and I took over the practice," said Sandstrom.

Sandstrom & Edwards Dentistry is an adult dental practice. They offer a wide range of services including bridges, crowns, dentures, and dental implants for patients over the age of 18. Sandstrom keeps the

office equipped with the latest technology, including a Cerec machine, which allows them to mold a crown in approximately an hour. The team at Sandstrom & Edwards Dentistry is always looking to expand their knowledge of new technology in the field.

"We are always looking to be better, do better and get bigger. We always want to attract new patients and have the latest and greatest in technology," said Sandstrom.

Dr. Sandstrom enjoys meeting new people at his practice and takes pride in giving patients the ability to be happy through their smile.

"It's enjoyable that we get to meet people from around the country and hear why they are here and where they have come from," said Sandstrom. "Our patients are wonderful people that have worked hard and have

made a way for themselves. We always try to give them the best value for their hard work."

Sandstrom and Edwards will continue to brighten people's smiles for years to come.

"It's really nice for me to be able to get people to smile again and see that happiness that comes in their life with having teeth that work and look nice," said Sandstrom.



Let us give you something to smile about.



DO YOU HAVE LOWER DENTURES THAT DON'T FIT? MISSING TEETH? TALK TO US ABOUT IMPLANTS!

NO APPOINTMENT NECESSARY

FREE EXAM & X-RAYS

PLEASE BRING THIS COUPON AT INITIAL VISIT

\$50 OFF

Crown, Bridge or Veneers

WITH COUPON. EXPIRES 6/30/13

Dentures

\$100 OFF

Partial Denture \$50 OFF

WITH COUPON. EXPIRES 6/30/13

Denture Laboratory Reline

\$149

WITH COUPON. EXPIRES 6/30/13

WALK-INS WELCOME • FULL SERVICE DENTURE LAB • IMPLANTS - Call for Consultation



Serving East Mesa for 20 Years

Dr. Paul Sandstrom, Dentist

Dr. David Edwards, Dentist

480-396-8684

7448 E. Main St., Mesa • Sun Valley Plaza • 1 Mile E. of Power Rd.
NW Corner of Sossaman & Main (Next to Wok In Restaurant)

\$0 Interest Financing Available



Lutheran Thrift Shop: Lisa Stark, CEO

Lutheran Thrift Shop Store Manager Megan Morris loves meeting the new faces that come into the shop every day. And it seems like there are more new faces all of the time.



With thrift shopping becoming more popular, the store has attracted new customers.

"In the last week we have had 42 new people sign up for our silent auction

area, which is a very unique department for resale shops in this area," said Morris.

Thrift store shopping has always been a smart option for people who need to stretch their dollar. Now after a several-year struggle with a tough economy, more families are checking out the bargains in thrift shops.

Lutheran Thrift Shop is a not-for-profit resale shop that supports various missions and ministries of the Grand Canyon Synod of the Evangelical Lutheran Church in America and its connected churches. Throughout the years the shop has moved from all corners of Greenfield and Main Street, doubling in size each time.

The East Valley location was opened in 1999 under the direction of Sue Vogel-Herrera to help those in need. Through the resale enterprise, the net proceeds are given as grants to organizations in the valley that submit requests to the shop.

More than 200 volunteers from ages 18 to 92 staff the store. They pride themselves on the store's cleanliness and organized presentation to shoppers. Their customers find many treasures at great prices.

"We're more than just a thrift store. With over 30,000 square feet of inventory, we offer a unique shopping experience for everyone," said Morris.



Nina Mirco, General Manager (left) and Lisa Stark, CEO

In the recent economic downturn, the store only thrived.

"It presented an opportunity for people to think about alternative ways of shopping," said Morris. "If you weren't already a 'thrifter,' the change in the economy inspired people to learn more about shopping and saving."

General Manager Nina Mirco said the employees take great pride in the impact the store has in the community. The hard work – cleaning and stocking the items that are donated – is all worth it when they hear how the proceeds help people in need.

More than just a thrift store... we offer a unique shopping experience for everyone!



4517 E. Main St., Ste. 104, Mesa 85205 | 480-218-1425

www.LutheranThrift.org

Mon-Sat 9am-4pm; Tues & Thur 9am-7pm

Like our page:  /LutheranThriftShopMesa



BEST RESALE SHOP

Whole Body Donor Program Operates with Science and Caring

Science Care is, indeed, a unique blending of science and caring.

Since opening in 2000, the Phoenix-based, pioneering company has distinguished itself as a leading whole body donor program and hands-on training facility. In fact, Science Care set the standard in 2003, when it became the first whole body donor program to be accredited by the American Association of Tissue Banks (aatb.org).

"We are the link between people that wish to donate their body to science and the medical researchers and educators that need human tissue to advance medicine," explained Melinda Ellsworth, Director of Donor Services.

"Supporting life through whole body donation for medical research, education and training is a way for any person, just like you or me, to create a meaningful and lasting legacy impacting generations to come," she continued.

"Without the generous gifts of whole body donors the rate of innovation in surgical devices, implants and minimally invasive techniques would be much slower," Ellsworth

explained. "Researchers rely on human tissue to help develop new treatment options for those suffering from life impacting and debilitating illnesses, such as macular degeneration, blocked arteries, diabetes, osteoporosis and many others."

In addition, "There are huge benefits for the family, as this is a no-cost program," Ellsworth said, noting that Science Care provides transportation, cremation and return of the cremated remains to the family.

Science Care's training programs reach health care providers, medical device companies and first responders, such as EMTs with the Phoenix Fire Department.

"Medical experts agree that hands-on medical training involving the use of human tissue is far superior to knowledge gained by computer simulations, instruction books or plastic models," said founder, CEO and President James Rogers.

With Science Care's top-quality training programs, community outreach and education about whole body

donation, Rogers said, "Our ultimate goal is to be a responsible steward for donation and to make a positive contribution to life and the Valley community."

For details, contact Science Care at 800.417.3747 or www.ScienceCare.com.



I Support Life

Whole Body Donation

For Medical Research and Training



No Cost Cremation

• **No Age Limit**

Call Today for a Free Information Brochure

Available 24 Hours A Day

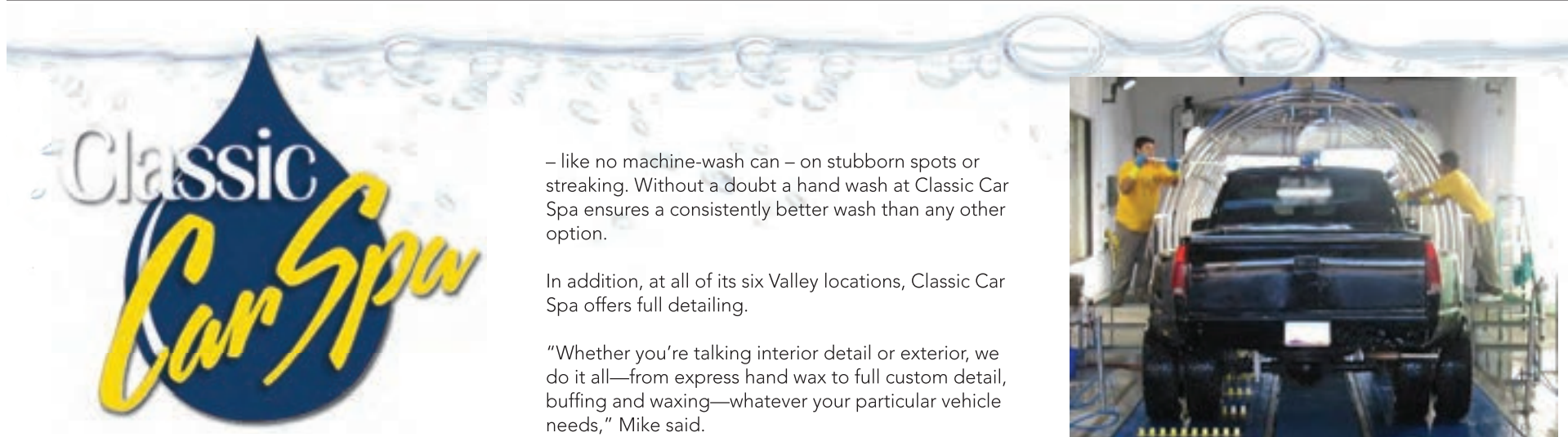
800-417-3747

www.ScienceCare.com

21410 N. 19th Ave. Ste. 126, Phoenix, AZ 85027



Science Care



– like no machine-wash can – on stubborn spots or streaking. Without a doubt a hand wash at Classic Car Spa ensures a consistently better wash than any other option.

In addition, at all of its six Valley locations, Classic Car Spa offers full detailing.

“Whether you’re talking interior detail or exterior, we do it all—from express hand wax to full custom detail, buffing and waxing—whatever your particular vehicle needs,” Mike said.

Each of the locations has a convenience store and each has oil and lube stations. Four locations have gasoline pumps and, with the purchase of a full-service car wash, customers save 20 cents a gallon on gas.

For a “spa wash” and other services, Mike said, “The price points are very competitive.” In addition, a computerized, conveyor-belt system means customers get a superior wash in a very reasonable amount of time.

Mike said oversized vehicles can fit in the wash tunnels so there is not an excessive upcharge for dual-wheel pickups or other large vehicles (not available at Ray Road and Goodyear locations).



Classic Car Spa is the only wash in Arizona that can accommodate Duallys as well as Lifted vehicles!

Give Your Car the Classic Car Spa Treatment

While some people simply “wash” their vehicles, others give them better treatment. They choose the safety, added attention and superior results of the Classic Car Spa treatment.

“We are a 100 percent hand-wash service, with no machines,” said Classic Car Spa General Manager Mike Grimes.

A hand wash is safer for a vehicle’s paint, mirrors, antennas and other parts. A hand wash also puts focus

“Our biggest thing is that we really make an effort to communicate with the customer and to get their feedback so we can continue to meet their needs and to put out a quality product,” said Mike.

The two Gilbert locations are at Val Vista and Williams Field and Warner and McQueen roads. In Mesa, Classic Car Spa is at Southern & Higley Rds. The Tempe location is at Ray Rd. & 56th St. For more about locations, wash packages and detailing services as well as coupons, visit www.classiccarspa.com.

Classic Car Spa

\$300 OFF* Car Wash

Good on #2, #3, #4 and #5 wash only.

Earn 5% Back on All Service Purchases
Ask your cashier to sign up for your FREE VIP Rewards Card!

www.ClassicCarSpa.com

4 East Valley Locations To Serve You • Visit Our Website

VISA MasterCard American Express



MOUNTAIN VIEW FUNERAL HOME & CEMETERY

Mountain View Funeral Home and Cemetery: Dan and Greg Coury

Mountain View Funeral Home and Cemetery started years ago with Greg Coury's grandfather. He started the company in the East Valley because he saw a need for a place where families can come and remember loved ones.

In 2009, Daniel Coury and his son, Greg, purchased the business from their family.

"I learned each area of business and spent time in each position, from accounting to maintenance to cleaning to lawn mowing. Then I settled in as an advanced planning salesman," said Greg.



Steve Lewis CFSP
COO/General Manager
Funeral Director



Gregory Coury
Vice President
Sales and Marketing

Today Greg works with his father to create a memorable experience for those grieving. Mountain View Funeral Home and Cemetery is the only family owned and operated funeral home and cemetery in the East Valley. The property includes 12 Burial Gardens and 19 Mausoleums and a crematorium. The home operates with four licensed funeral directors that provide caring and sensitive service lead by our mortuary manager, Steve Adkins.

"We are in the business to create memories. We walk the family through [the process] as easily as possible, be a support for them. On the cemetery side, we provide a beautiful place for people to come and remember," said Greg.

The company has a strong and experienced management team. General Manager Steve Lewis is a third generation funeral director from Iowa. All of that experience creates a service like none other. Greg describes the service in a unique way.

"It is like planning a wedding in a way. It's a passing, but it's also a celebration of life," said Greg. "It should be as elaborate as that person's life was and show what the



Mountain View Funeral Home and Cemetery

person represents. That is something we try to create and not just have a normal funeral service."

Greg finds that the most rewarding aspect of business is helping clients with advanced planning. He can create a road map for the family before the heartbreak hits.

"It is all planned out for them and that is when people tell us thank you. It's very rewarding, that's the enjoyable part," said Greg. "There is good with the bad, but I think this is the rewarding aspect that makes this a different business."



We care about our community. That is why we encourage advance planning. Now serving two communities.

We are a third generation family owned and operated funeral home and cemetery and advanced planning center. Known for our caring, compassionate, and helpful staff, we will guide you through the process during one of life's most challenging trials.

We will take care of every aspect of your funeral arrangements on-site, including a beautiful cemetery. We care about our community and that is why we encourage Advance Planning. Come in to find out how Advance Planning reduces the burden on those you love.

Funeral Services • Cemetery • Cremation



480-888-2682 | www.queencreekfuneralhome.com



480-832-2850 | www.mvfuneralhome.com



St. Vincent de Paul Thrift Stores

SAVINGS FOR YOU, HELP FOR OTHERS

St. Vincent de Paul Chandler Thrift Shop: Ed Dubiel, Pam Allara

"It's almost as if we were lead here," said Ed Dubiel.

The "we" he is referring to are himself and Chandler Store Manager Pam Allara. Both had successful jobs until the stars aligned to bring them to the Society of St. Vincent de Paul.

Seven years ago, Dubiel was called for an interview to work for the Chandler thrift shop. He knew it was a good fit because his work would benefit others. Today he is the Director of Retail Operations.

Allara and her husband owned a successful \$99 furniture store when it dawned on her that she could be doing more meaningful work.

"A friend of mine told me that the thrift shop was looking for a store manager. I thought it would be a really good fit for me. Its not just a normal retail position where you are making money for the executive," said Allara.

The Society of St. Vincent de Paul is an international

non-profit organization that serves the homeless and economically disadvantaged population. Since 1946, the organization has helped people across the globe. The thrift stores collect donations for resale to provide funds to the support St. Vincent de Paul missions.

"Since 1946, when St. Vincent de Paul opened, they realized that a thrift store compliments their mission by providing clothes, furniture, beds, etc. for their clients and provides fair value for quality used merchandise," said Dubiel.

There are a total of eight thrift store locations throughout the valley. The East Valley has three locations in Chandler, Mesa and Apache Junction.

Each store has developed its own specialty. The



Pamela Allara Chandler Store Manager

Chandler location has an emphasis on books, especially children's books. Every Saturday the store has a children's story hour from 10 to 11 a.m. Allara said twice a year the store has a book sale that draws a lot of buyers.

Later this year Dubiel hopes to open two additional thrift store locations in the Sun City and Scottsdale areas.



St. Vincent de Paul Thrift Stores

SAVINGS FOR YOU, HELP FOR OTHERS



CHANDLER

2051 N. Arizona Ave.
480.812.1156

Corner of Warner and Arizona Ave.
in the Mercado Shopping Center



APACHE JUNCTION

2540 W. Apache Trail
480.380.4515

Across from Wal Mart



MESA

2352 W. Main St.
480.644.0887

1/2 block West of Dobson

OPEN SUNDAY 11AM-4PM

We Accept Donations (Including Vehicles)

(Drop off in the back of the building)

For a Donation or Vehicle Pickup, Call 602-254-3338



The Society of St. Vincent de Paul has been serving homeless and economically disadvantaged populations since 1946. Through home visits, shelter, food assistance, employment services, thrift stores and outreach programs, St. Vincent de Paul provides compassion and support to individuals in need.

LOOK FOR DAILY DISCOUNTS & STORE SPECIALS UP TO **50% OFF**

To learn more or find a store nearest you, please visit our website:
www.stvincentdepaul.net

FYNES AUDIOLOGY

Fynes Audiology, LLC: Cassandra Fynes, Au.D, CCC-A

Dr. Cassandra Fynes grew up with hearing problems. In her childhood, she had tubes put in her ears that resulted in a minor hearing loss. The doctors that treated her explained little about why this happened.

This experience inspired her later in life while she attended Arizona State to enroll in speech and hearing science classes. She found those studies so interesting that she was diverted from her early choice of accounting.

The East Valley native later embarked on her career with a local audiology practice. This allowed her to build relationships and a reputation that led to opening her own practice, Fynes Audiology, LLC, in 2003. The office is located in Mesa on Dobson Road.

In June of 2010, Dr. Fynes partnered with Roger Knighton. Utilizing their extensive education and clinical experience and the modern audio logical technologies available in their office, Dr. Fynes and Mr. Knighton can

obtain accurate information about the scope of a patient's hearing loss. The two work together with a focus on improving the quality of life for their clients. Dr. Fynes also has a working relationship with five ear, nose and throat physicians to help diagnose hearing problems and provide treatment.

It is estimated that nearly 30 million Americans have some kind of hearing problem. For many people hearing loss goes unnoticed, as it occurs so gradually that they do not recognize the problem; they only notice that they have a harder time paying attention to conversations, hearing the television, or picking a friend's voice out in a crowded room.

For those patients who require hearing assistance, Fynes Audiology offers a wide range of hearing aids, as well as assistive listening devices, earplugs and ear buds. If a patient needs a hearing aid, the staff at Fynes Audiology will make sure that he or she receives a top quality brand that fits, and at a good price.

Fynes Audiology offers more than just hearing aids. It helps people who are having trouble hearing regain the

Dr. Cassandra M. Fynes, Au.D. CCC-A
Roger Knighton, M.N.S., CCC-A



confidence and security that comes with being able to hear comfortably.

For the past decade, Fynes Audiology has seen significant growth of its client base. But more than the growth of the business, Dr. Fynes takes great pride in the customer service that Fynes Audiology provides. When asked about the future, she said she doesn't mind that the practice continues to grow as long as it keeps its focus on patient care.

Follow Fynes Audiology, LLC on Facebook and Twitter. Visit www.fynesaudiology.com for more information.

Full Service Audiology Clinic located in Mesa, AZ

FYNES AUDIOLOGY



CELEBRATING 10 YEARS AT FYNES AUDIOLOGY



Dr. Cassandra M. Fynes, Au.D. CCC-A



Roger Knighton, M.N.S., CCC-A



Clarissa Client Coordinator

**No-Risk Trial Period
for 45 Days**

One coupon per customer. Expires 7/31/13.

FYNES AUDIOLOGY
AUDIOLOGY • HEARING AIDS • HEARING PROTECTION

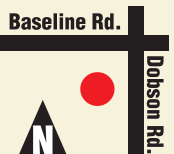
**Buy 1 Get 1 FREE
Batteries One Pack**

6 pack limit on batteries. One coupon per customer. Expires 7/31/13.

FYNES AUDIOLOGY
AUDIOLOGY • HEARING AIDS • HEARING PROTECTION

FYNES AUDIOLOGY
AUDIOLOGY • HEARING AIDS • HEARING PROTECTION

2058 S. Dobson Rd., Ste 10, Mesa, Arizona 85202
480-456-0176 | www.fynesaudiology.com





Apex Wellness Studio Offers Integrated Health Care

For Richard Shand, an injury during a martial arts competition when he was in college sparked his interest in chiropractic care and fueled his passion for helping others find health and well-being.

He said after his injury, "The medical route didn't help, so I went to a chiropractor for the first time and was amazed at the results I got."

That initial introduction led him to Palmer College of Chiropractic. Following graduation, the Prescott,

Arizona-raised chiropractor, returned home to open Apex Wellness Studio in Chandler in 2002.

To complement the excellent chiropractic and physiotherapy care, Apex Wellness soon introduced additional services.

"In the past few years I have expanded from chiropractic with post-graduate education in functional medicine and clinical nutrition," Dr. Shand said.

He hired another chiropractor — Dr. Kent Clark, DC — who Dr. Shand calls "an amazing adjuster, who is good with the patients"—to do the chiropractic treatments.

"Now, I focus on the functional medicine, so I am treating chronic conditions, like type 2 diabetes, thyroid issues, fibromyalgia and more," Dr. Shand explained.



Your Apex Wellness team: Dr. Clark, Jordan, Claudia, Fawn, Dr. Shand, Estee, Taryn, Karla, and Dr. Sutton

Apex Wellness has seen tremendous growth as a result.

"As we were growing, the Subway next door went out of business, and we took over that suite as well allowing us to expand more. We now have 12 employees and are still expanding to be able to help more people," he said. "Most of our business is through word of mouth, and I attribute the growth to our patient-centered model of care, along with the fact that we are just very good at what we do."

New DIABETES Study

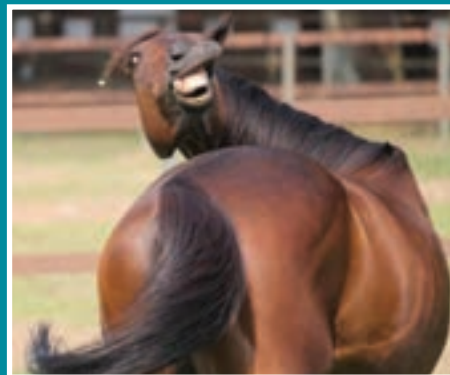
Encouraging Study on Type II Diabetes Shows the disease CAN BE REVERSED in as little as 1 WEEK.

A free guide has just been made available to type II diabetics detailing an approach more powerful than any drug known to modern science.

The free diabetic guide explains in plain English how many diabetics have been able to reduce and eliminate their drugs and insulin injections, lose weight without exercise, reduce and eliminate the risk for diabetic complications, restore pancreatic function, and even become non-diabetic. The free guide also reveals rarely used diagnostic testing that is helping doctors understand potential causes of diabetes beyond weight gain, genetics, and lack of exercise. To receive your free guide (available only while supplies last) call toll free 1-800-825-2242 or go to www.ChandlerDiabetesReport.com.



Dr. Richard Shand, D.C.



Should I See A Chiropractor? Get Pain Relief NOW!

**Low Back, Hip & Leg Pain
Headaches • Neck, Shoulder & Arm
Pain • Numbness in Hands & Arms
Pain Between Shoulders**

**Auto & Personal Injuries
Work • Sports
Family Wellness**

\$27 NEW PATIENT SPECIAL

Includes chiropractic consultation, exam, necessary x-rays & FREE 30 Minute Massage (up to \$200 Value).

**Apex Wellness Studio
(480) 895-3775**

Not valid with other offers or prior services. Exp. 7/31/13.



Apex Wellness Studio

4960 S. Alma School Rd., Ste. 17, Chandler, AZ 85248
(NWC of Alma School and Chandler Heights in the Safeway Plaza)

(480) 895-3775

www.apexwellnessstudio.com



Strong Tower Insurance Group Focuses on Building Strong Relationships

While Strong Tower Insurance Group has grown and triumphed even through storms of adversity, the Gilbert-based and family-owned and operated independent insurance brokerage hopes to help others do the same.

Our name, Strong Tower, refers to 'a place of refuge', "The Safe Haven for all of your Insurance Needs," says owner/agent, Martin "Marty" Uhlhorn.



Left to right: Marty, Brandi, Suzie, Deanne (behind), Rebecca, Corinne, Janice (behind).

He said Strong Tower's peaceful, family-oriented atmosphere, where clients' commercial, personal, life and health insurance needs are met, had its beginnings in the early 1990s.

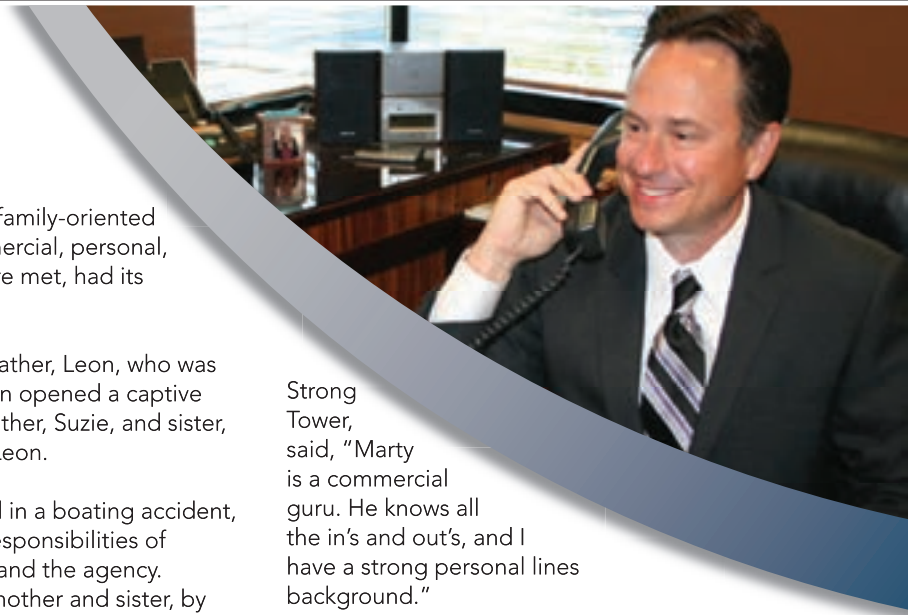
Following in the footsteps of his father, Leon, who was a captive insurance agent, Uhlhorn opened a captive agency in Arizona in 1993. His mother, Suzie, and sister, Deanne, worked with Marty and Leon.

In 1998, when his father was killed in a boating accident, Uhlhorn, at age 29, took on the responsibilities of his mother, three younger sisters and the agency. Remarkably, with the help of his mother and sister, by 2007 they had become the second largest (American Family) agency in the country.

In 2009, Uhlhorn decided to leave that behind and become an independent insurance agent.

"Instead of representing the company, we now can represent the client to the marketplace," Uhlhorn said. "We are able to provide more options and have the client's best interest in mind."

Rebecca Ryan, personal lines account executive with



Strong Tower, said, "Marty is a commercial guru. He knows all the in's and out's, and I have a strong personal lines background."

"We represent unique carriers; we have unique partnerships and have strong experience in construction, nonprofits and retail business insurance," Uhlhorn said. "As a family-owned business, we believe in the personal touch and doing business by building relationships—getting to know your family, your business and ways that we can help you."

Strong Tower, at 3303 E. Baseline Rd., Ste. 101, in Gilbert, can be reached by calling 480-926-9011 or by emailing Marty Uhlhorn at marty@strongtowerig.com.

COMMERCIAL,
PERSONAL, LIFE &
HEALTH INSURANCE.

IF YOU COULD SAVE
HUNDREDS
ON YOUR INSURANCE NOW,
WHY WAIT FOR YOUR RENEWAL?

Call today and let us work to find you the right coverage for the best value with personal attention.



"The Safe Haven For All of Your Insurance Needs"

3303 E. Baseline Rd., Ste 101, Gilbert, AZ 85234

(480) 926.9011

www.strongtowerinsurancegroup.com





Greulich's Builds Solid Reputation for Quality Automotive Repair Services

Since it started in the Phoenix metro area in 1977, Greulich's Automotive Services has built a solid reputation for quality work and quality products.

"Everything we do, we stand behind," said Chris Greulich, owner. "You can count on Greulich's Automotive for all of your auto repair needs."

The services available at their 10 Phoenix metro locations include everything from tune-ups to oil changes to complete tire and disc brake service.

All of the Greulich auto repair technicians are ASE-certified, which signifies that they are highly trained and experienced in the industry. They are skilled at working on all makes and models of vehicles, including brands such as Land Rover, Mercedes and Audi.

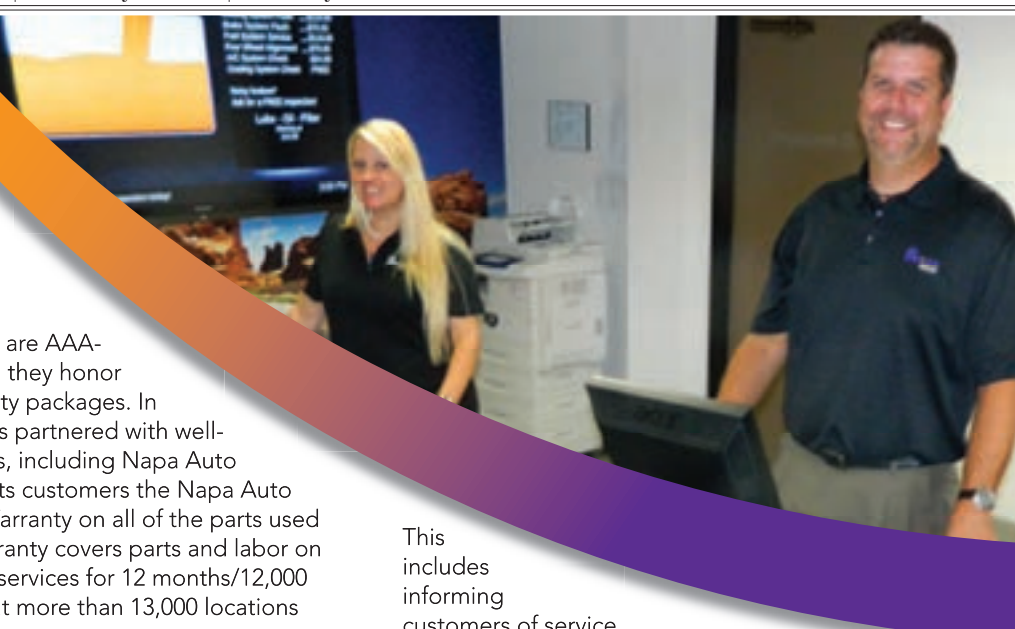
The Greulich locations are AAA-approved centers, and they honor most extended warranty packages. In addition, Greulich's has partnered with well-known industry leaders, including Napa Auto Care Centers to offer its customers the Napa Auto Care Peace of Mind Warranty on all of the parts used by Greulich's. This warranty covers parts and labor on qualifying repairs and services for 12 months/12,000 miles and is honored at more than 13,000 locations nationwide.

This added value represents just one more way in which Greulich's ensures that they deliver the best service to their customers and "one-stop shopping" for repairs, maintenance and tire service.

Greulich said, "Our focus is on serving our customers and putting out a good product."

This includes informing customers of service recommendations and helping them schedule work that will maintain the safety and life of their vehicle, Greulich explained.

For details about Greulich's Automotive Services, including locations of the valley-wide service centers, check out their website at www.Greulichs.com or call 480-619-6751.



To schedule an appointment, visit our website www.greulichs.com



OIL & FILTER CHANGE

\$15⁸⁸

Plus tax, waste disposal fee & shop supplies

INCLUDES 12-PT. SAFETY INSPECTION & TIRE ROTATION

Up to 5 quarts of 5/30 oil & new oil filter. Free 12-pt. safety inspection & tire rotation done upon request only.

One coupon per customer. By appointment only. Valid at all 12 service locations. Expires 7/31/13. Cannot be combined with any other offer. Must present coupon at time of service. Most vehicles.



A/C INSPECTION

\$24⁹⁵

We'll keep you cool at a great price!

Electronic Leak Check • Check A/C Belt Check System Pressure & Temp Freon Additional

\$24.95 plus tax, hazardous waste disposal fee & shop supplies. One coupon per customer. By appointment only. Valid at all 12 service locations. Expires 7/31/13. Most vehicles. Must present coupon at time of service. Cannot be combined with any other offer.



Our Visual A/C Inspection is always FREE!

6 East Valley Locations to Serve You. Come visit our new location!

We are now accepting our competitors coupons!

Their coupon is our coupon. Bring it in and we will match or beat their offer.

Greulich's reserves the right not to honor a competitor's coupon due to misprints, pricing errors or any irregularity we may deem fit. One coupon per customer. Most vehicles. Cannot be combined with any other offer. Must present coupon at time of service.

NEW LOCATION IN TEMPE!



OPENING JUNE 1ST
1750 E. Elliot Rd., Tempe, AZ
(480) 751-3553
NW Corner McClintock & Elliot

MESA
2641 S. Alma School Rd.
Mesa, AZ 85210
(480) 820-2111
Guadalupe & Alma School

CHANDLER
6625 W. Chandler Blvd.
Chandler, AZ 85226
(480) 940-9655
Chandler & 66 St.

CHANDLER
1985 S. Alma School Rd.
Chandler, AZ 85248
(480) 726-2938
Alma School & German

GILBERT
703 W. Ray Rd.
Gilbert, AZ 85233
(480) 782-0556
SE Corner Ray & Cooper

AHWATUKEE
10827 S. 48th St.
Phoenix, AZ 85044
(480) 893-1201
Elliott & 48th St.



Associa®

Jomar Association Services

Association Management Company Works to Improve Lives of People in Their Communities

In her everyday work, Shelly Holland enjoys making a difference.

As CEO of Jomar Association Services, a Valley-wide community association management company, Holland's work is designed to add value to the communities Jomar serves and, ultimately, to improve the lives of the people who live in those communities.

"I like the interaction with clients and that we are able to turn potential challenges into positive outcomes," Holland said.



Founded in 1979 by John Martin, the firm was originally based in downtown Chandler, but has since been relocated to a more central

Associa mascots Scout, Kids' Safety, and Daisy, Going Green Initiative.

location in Tempe. A satellite office operates in Gold Canyon and Jomar looks to open other satellite offices in the future. Today, Jomar is part of Associa, North America's largest community association management firm. The national resources, coupled with local knowledge and comprehensive expertise make Jomar an industry leader in community association management.

In fact, Holland hopes current and potential customers and clients understand one important distinction about Jomar.

"We are a different kind of management company," she said. "The services we offer our communities provide direction, leadership and community spirit."

For example, Jomar's Customer Care Department ensures timely response. "We have five people on the phones at any one time, servicing our clients and dealing with their concerns."

Holland's own experience includes 28 years in the business.

"As an industry professional, I have been dedicated to



Client appreciation summit.

fostering vibrant, competent and harmonious community associations, applying leadership strengths, fairness principles, knowledge and experience."

In addition, Jomar is known for its dependable service and efficient follow-through.

"The key is finding the company that will listen to you," Holland said. "I spend the time getting to know the nuances of the community so we can custom tailor our service to their needs."

For more about Jomar Association Services, visit www.jomarassociations.com or call 480-892-5222.



Shelly Holland, CEO, speaking at client appreciation summit.



MANAGEMENT.



BEYOND MANAGEMENT.

Whoever said "less is more" surely wasn't talking about ice cream or community management. At Jomar Association Services, our unsurpassed community management services are just the beginning. We know that you demand more... more service, more value, and more of what you need. That's why we offer lifestyle products and services beyond what you'll find anywhere else, designed to *improve your life*.



1514 W. Todd Drive, Suite B-103, Tempe, AZ 85283
(480) 892-5222

6140 S. Kings Ranch Road, Gold Canyon, AZ 85118
(480) 288-8335

WWW.JOMARASSOCIATIONS.COM

Delivering unsurpassed management and lifestyle services to communities worldwide.



Wojcich worked at Wilson Camera for six months until the owner approached him with an opportunity -- to fix broken cameras for a profit. But the young Wojcich did not have a clue how to fix a camera.

"He said, 'I'll tell you what, you learn on those things, whatever we sell I'll give you half.' From there I just progressed, learned it all on my own," said Wojcich.

Tempe Camera Inc. started in a small office across the street from its current location. In 1972, Wojcich started the company as a camera repair shop.

"We started the business as a repair business and I was the repairman. After 41 years I still repair. It's my hobby, I love it, I don't get tired of it," said Wojcich.

Wojcich started the rental aspect of the business when a customer came in with a dilemma. He had a broken camera and a photo shoot in a couple hours.

"I told him 'here borrow this', well that was the last time that I said borrow. I evolved a new business of renting cameras," said Wojcich. "It started off slowly. I would buy broken ones, fix them and then I got to the point where I had extra money to buy brand new equipment. That went on and on and now we have a million dollar rental inventory."

In 1986, Wojcich moved the store to its current location at 606 West University Drive, Tempe. Today



Tempe Camera, Inc. is the largest photographic shop in Arizona. Along with the repair department and rental center, the shop offers a photo lab and a sales department, where clients can trade-in or buy new or used equipment.

The photo lab, the Tempe Camera Photo Imaging Center, is in another building next door at 530 West University. Besides processing film and making standard prints, the lab offers the unique service of allowing customers to have their digital or film images printed on a variety of papers and canvases. The shop also provides custom matting, mounting, framing and albums.



Tempe Camera Inc.: Joe Wojcich

Joe Wojcich was attending Phoenix College and living on \$50 a week when he was offered a job at Wilson Camera. He never dreamed it would turn into his life long career.

"Never thought I would be a camera repairman, until someone said 'you will be a camera repairman' ", said Wojcich.

EOS Rebel T3i / T3

INSTANT REBATE

Save Now!

MAY 5, 2013 ▶ JUNE 1, 2013	
<p>\$200 INSTANT REBATE</p> <p>EOS REBEL T3i</p> <p>Eligible Kits / Combinations:</p> <p>EOS REBEL T3i EF-S 18-135mm IS Lens Kit + EF-S 55-250mm 1/4-5.6 IS II</p> <p>1849⁹⁹ + 1299⁹⁹ - \$200 SAVINGS = \$949⁹⁹</p>	<p>\$200 INSTANT REBATE</p> <p>EOS REBEL T3i</p> <p>Eligible Kits / Combinations:</p> <p>EOS REBEL T3i EF-S 18-55mm IS II Lens Kit + EF-S 55-250mm 1/4-5.6 IS II</p> <p>1649⁹⁹ + 1299⁹⁹ - \$200 SAVINGS = \$749⁹⁹</p>
<p>\$150 INSTANT REBATE</p> <p>EOS REBEL T3i</p> <p>Eligible Kits / Combinations:</p> <p>EOS REBEL T3i EF-S 18-135mm IS Lens Kit + EF-S 75-300mm 1/4-5.6 IS III</p> <p>1849⁹⁹ + 1199⁹⁹ - \$150 SAVINGS = \$899⁹⁹</p>	<p>\$150 INSTANT REBATE</p> <p>EOS REBEL T3i</p> <p>Eligible Kits / Combinations:</p> <p>EOS REBEL T3i EF-S 18-55mm IS II Lens Kit + EF-S 75-300mm 1/4-5.6 IS III</p> <p>1649⁹⁹ + 1199⁹⁹ - \$150 SAVINGS = \$699⁹⁹</p>
<p>\$50 INSTANT REBATE</p> <p>EOS REBEL T3i</p> <p>Eligible Kits / Combinations:</p> <p>EOS REBEL T3i EF-S 18-135mm IS Lens Kit</p> <p>1849⁹⁹ - \$50 SAVINGS = \$799⁹⁹</p>	<p>\$50 INSTANT REBATE</p> <p>EOS REBEL T3i</p> <p>Eligible Kits / Combinations:</p> <p>EOS REBEL T3i EF-S 18-55mm IS II Lens Kit</p> <p>1649⁹⁹ - \$50 SAVINGS = \$599⁹⁹</p>

MAY 12, 2013 ▶ JUNE 8, 2013

<p>\$200 INSTANT REBATE</p> <p>EOS REBEL T3</p> <p>Eligible Kits / Combinations:</p> <p>EOS REBEL T3 EF-S 18-55mm IS II Lens Kit + EF-S 55-250mm 1/4-5.6 IS II</p> <p>1499⁹⁹ + 1299⁹⁹ - \$200 SAVINGS = \$599⁹⁹</p>	<p>\$150 INSTANT REBATE</p> <p>EOS REBEL T3</p> <p>Eligible Kits / Combinations:</p> <p>EOS REBEL T3 EF-S 18-55mm IS II Lens Kit + EF-S 75-300mm 1/4-5.6 IS III</p> <p>1499⁹⁹ + 1199⁹⁹ - \$150 SAVINGS = \$549⁹⁹</p>
<p>\$50 INSTANT REBATE</p> <p>EOS REBEL T3</p> <p>Eligible Kits / Combinations:</p> <p>EOS REBEL T3 EF-S 18-55mm IS II Lens Kit</p> <p>1499⁹⁹ - \$50 SAVINGS = \$449⁹⁹</p>	

All cameras include Canon U.S.A. Inc. one-year limited warranty/registration card.

Arizona's Largest One-Stop Photographic Shop!

Full Service Photo Imaging Center - Repairs - Rentals - Photo, Digital & Video Equipment Sales

<p>Sales, Rentals & Repairs 606 W. University Dr. Mon-Fri 8-6, Sat 9-5 1/2 mile west of Mill Ave.</p>	<p>Imaging Center 530 W. University Dr. Mon-Fri 9-6 a Division of Tempe Camera</p>	<p>480.966.6954 www.tempecamera.com</p>
--	---	---

Award Winning Service since 1972!

usa.canon.com/eos

©2013 Canon U.S.A., Inc. Canon, EOS and EOS Rebel are registered trademarks of Canon Inc. in the United States and may be registered trademarks or trademarks in other countries.

Eligible product(s) must be purchased by an end user customer from a participating authorized Canon U.S.A. dealer or reseller in the 50 United States, the District of Columbia or Puerto Rico during the promotion period.

Eligible product(s) must be purchased by an end user customer from a participating authorized Canon U.S.A. dealer or reseller in the 50 United States, the District of Columbia or Puerto Rico during the promotion period. Items must be purchased together on the same sales receipt for combination offers. For each eligible product, offer is valid only through the promotion end date or while supplies last, whichever is earlier. Used or refurbished products are not eligible. Limit one deduction per eligible product purchased during the promotion period. Offer valid for residents of the 50 United States, the District of Columbia and Puerto Rico only. Purchases made from a dealer / reseller are subject to the dealer's / reseller's shopping terms and restrictions and return policies. In the event of questions regarding claims, program or policy, Canon will review all documentation and make the final determination of claim eligibility. All decisions made by Canon and / or its agents are final. Not responsible for printing or typographical errors. Void where prohibited, taxed or restricted by law.



Jerry Schwallier
President & CEO

Arizona Bank & Trust Provides Local Banking Solutions

With all the advantages of a true local, community bank, Arizona Bank & Trust also provides the backing and solidarity of its parent organization, Heartland Financial USA, Inc., a \$4.9 billion financial services company.

"As a local bank, all the decisions affecting client relationships are made by people who live, work and are actively involved in serving the Phoenix metropolitan area," said President and CEO, Jerry Schwallier. "Because we are decentralized, we are more proactive in bringing solutions to the communities we serve."

Arizona Bank & Trust opened its first office in Mesa in August 2003, and since then has added branches in Chandler and Gilbert, as well as Tempe, Scottsdale and Phoenix. On July 1, its newest office will open in Tempe, on Baseline, east of Rural.

The federally-insured, state-chartered bank provides a full range of integrated services, including leading-edge financial services not typically offered by community banks. As such, Arizona Bank & Trust businesses, nonprofit organizations, professionals and households can expect excellent resources for commercial banking, personal banking, treasury management, wealth management, investment management and mortgage banking.

"We are a values-based company, rather than a bottom-line based company," Schwallier said, adding that this is seen in the recruiting they do, in the involvement of staff in church and community organizations and local leadership roles, as well as in the way in which customers are treated.

They focus on creating "a great customer experience," Schwallier said. "We are a financial institution with people dedicated to finding solutions and helping our clients meet their goals, whether business or individual goals."

Celebrating a decade of difference.

Arizona Bank & Trust has accomplished a great deal in the last ten years, and we owe it all to our customers, employees and the wonderful communities we serve throughout the Valley. It feels good knowing that we're a part of helping build better communities through meeting the financial needs of our customers, providing jobs, philanthropic outreach, and much more. We look forward to making *great things happen* in the Valley for decades to come!



480.844.4540
www.ArizBank.com

TEMPE | CHANDLER | SCOTTSDALE AIRPARK | MESA | PHOENIX | GILBERT





Stewart Travel, LLC World Heritage Travel

Travel Agency: Pam Stewart

As Stewart Travel prepares to celebrate its 20th anniversary, it looks forward to participating in the changing dynamics of the travel industry. Over the past two decades, Pam Stewart has taken her business from her living room to a small office in downtown Mesa, to 2 other Mesa offices, to their current office near Old Town Scottsdale.

"Initially, I was in a tiny one person office near Center and First Streets in downtown Mesa. Through my co-op advertising with Image Tours (the European Tour Operator featured below), and my partnership with the East Valley Tribune, I was able to launch my business," said Stewart.

"We have been working together now for the entire past 20 years - East Valley Tribune, Image Tours, and Stewart Travel, each integral participants in our success."

After growing up in the Valley, Stewart and her husband moved to Mesa in the late 80's. Stewart has extensive experience in various aspects of the real estate business from sales, to lending to title insurance and escrow. Loving travel, she started Stewart Travel May 26th, 1993, seeking a more positive, fun career experience, while still assisting folks with their dreams.

"Travel should be a growing, learning cultural experience for people, if you approach it with a positive outlook, flexibility, and are eager for new adventures. And that's what we aim to achieve for our clients, a fulfilling, fun, rewarding journey of a lifetime," said Pam.

At Stewart Travel, Pam focuses on group and independent leisure travel for clients. As a Travel Professional, she enjoys sharing her past experiences and specialized knowledge with clients; things she says cannot be taken from reading books, articles or the internet. Pam uses this specialized knowledge and experience to give more specific information and guidance for her clients to plan their journeys.

"I like dealing directly with clients to create their trip of a lifetime! A big part of the pleasure for the clients in leisure travel is participating in the planning process and anticipating their trip," said Stewart. "Providing professional travel services which helps them make their travel dreams come true is very fulfilling for me!"

Stewart Travel is a family owned and operated full-service international retail travel agency. They specialize in European travel, with an emphasis on the British Isles, Ireland, UK, and western and central Europe. Pam is an Accredited Cruise Counselor (ACC), ScotsMaster, Irish Shamrock Specialist, and European Tour Specialist with memberships in all of the major travel industry associations: CLIA (Cruise Line International Association), ARC (Airline Reporting Corporation for ticketing), IATAN (International Airlines Travel Agent Network), IATA (International Air Transport Association for international ticketing), ASTA and ARTA (Travel Agency Associations), Ensemble Travel Group, and the Better Business Bureau. She is a Past President and current member of the Mesa Sunrise Rotary, one of 34,000 community-based service clubs of Rotary International. Stewart Travel has been located at 4300 N. Miller Rd #152, Scottsdale, AZ 85251, for the last 6 years (info@stewart-travel.com).

ESCORTED EUROPE TOURS

Last Chance to book for 2013 ... Prices include Air from Phoenix

Prices reflect
\$300
Savings per
couple

HEART OF EUROPE® Circle

15-day tour featuring Germany, Austria, Italy, Switzerland, France, Belgium, and Holland

\$3740

Includes AIR from PHOENIX

Oct. 14 & 16 departures. Includes air & air taxes; escort, hotels, 22 meals, transportation in Europe; per person, double occupancy. **BOOK BY 7/17/13.** Operated by Image Tours Inc.



BRITAIN & IRELAND

16-day tour of England, Scotland, Wales & Ireland

\$4040

Includes AIR from PHOENIX

Sept. 25 departure. Includes air & air taxes; escort, hotels, 22 meals, an English tea, transportation in Europe; per person, double occupancy. **BOOK BY 7/17/13.** Operated by Image Tours Inc.



SPAIN & PORTUGAL

15-day tour featuring Lisbon, Seville, Algeciras, Granada, Costa del Sol, Cordoba, Baeza, and Madrid

\$4240

Includes AIR from PHOENIX

Sept. 5 & Oct. 10 departures. Includes air & air taxes; escort, hotels, 22 meals, transportation in Europe; per person, double occupancy. **BOOK BY 7/17/13.** Operated by Image Tours Inc.



CALL FOR A FREE EUROPE
TOUR BROCHURE!

STEWART TRAVEL - Your Europe Tour Experts in Scottsdale
Ph: 480-926-1703 or 888-926-1703



Rich Morgan giving acceptance speech while accepting 2013 National Contractor of the Year Award in Orlando, FL.

Magic Touch Mechanical: Rich Morgan

Rich Morgan started working in the HVAC industry while living in New York. Having visited Arizona before, he decided what better place to be in the A/C business and raise a family. So, he packed his bags and headed West.

After a few years of living in Arizona, he found the perfect home in the East Valley and decided it was a great place to start his new company. That's when Magic Touch Mechanical was born.

"About 15 years ago I decided the East Valley was the perfect place to raise my kids and start a business. I wanted to provide a service to the community I lived in," said Morgan.

Although Magic Touch Mechanical is a large company, they are still a family-owned and operated air conditioning, heating, and energy testing company. Magic Touch utilizes high tech tools like thermal image infrared cameras, air leakage detection equipment, and other testing equipment to improve home efficiency.

"We take a different approach than most air conditioning companies. We take what we call the whole-home approach," said Morgan. "So we look at all the systems in the home and treat the whole home as one system, i.e. A/C, insulation, building tightness, etc. all work together to create a comfortable and efficient home."

Over the years, Morgan never anticipated his company would grow as rapidly as it has. Now the company

employs over 25 people and has broadened its service area as far west as Sun City and even to the city of Maricopa.

"We continue to grow not only in size, but in product and service offerings, as well as, geographically," said Morgan. "We will continue to grow and expand as our clients request more."

Morgan and his wife, who became a partner in 2005, pride themselves on the many prestigious awards that Magic Touch Mechanical has earned over the years. Recently the company was named 2013 National Residential Contractor of the Year by ACCA (Air Conditioning Contractors of America). In addition, the business is the highest rated air conditioning company in Arizona on Kudzu.com and has an A+ grade with the BBB.

"In an industry that's not always the most trusted because of a few bad apples, we strive to show clients that there are still 'good guys' in the world that can be trusted to do the right thing," said Morgan.

A Friend You Can Trust To Keep You Cool!

Complete New A/C & Heating Systems

Starting as low as

\$4,700 Installed



Whole Home Energy Audit Test with Infrared Camera Scan Starting at only \$99



Call Today for a FREE Quote!

(480) 719-3051



www.AirConditioningArizona.com



**Better Hearing.
Better Understanding.
Better Living.**



Tri-City Audiology: Kay Kochman

Kay Kochman's favorite part of her work is when patients or their family members tell her how her work has helped reconnect their lives.

Kay – and her partner audiologists Dave McBride and Allen Rohe – own Tri-city Audiology with locations in Mesa, Chandler and Tempe. The Tri-City Audiology team holds doctorate and master's degrees. They are certified by the American Speech-Language-Hearing Association.

Tri-City Audiology specializes in hearing health care. All three offices provide full diagnostic hearing evaluations, hearing aid fitting and management, on-going care for hearing aid patients, tinnitus consultation, evaluation and management.

"One area of our practice that we feel is unique is our tinnitus/hyperacusis clinic in the Tempe office. Dr. Rohe has been very successful in providing tinnitus management not only to our Arizona residents, but in other states, including Alaska," said Kochman.

The clinic has also started working with musicians to design

hearing protection and custom-made in-ear sound monitors.

McBride, Rohe and Kochman purchased Tri-City Audiology from the original owner and that transaction was completed in 2010. That doesn't mean they are new to Tri-city Audiology. Kochman, for example, has been at Tri-City Audiology for 15 of her 20 years as an audiologist.

"We each work and run our three separate offices, but it is one company. Rather than trying to create a presence in each location, we find our patients are better served with a consistent presence in one location," said Kochman.

Kay Kochman can be found at the Chandler location, Dave McBride at the Mesa location and Allen Rohe in Tempe.

The team prides itself on their overall patient care, what the partners refer to as "hometown care."

Kochman explains that hearing loss can create isolation and she is happy that she can connect people with their friends and family again.



**Better Hearing.
Better Understanding.
Better Living.**



Comprehensive Audiological Assessment • Tympanometry to Assess Middle Ear Function • Hearing Aid Evaluations and Dispensing Ear Molds for Noise, Water Protection and MP3 Use • Hearing Aid Batteries and Accessories • Individual Hearing Conservation Consultations Ototoxic Monitoring • Tinnitus/Hyperacusis Consultation, Evaluation and Management • Tinnitus Retraining Therapy • Musician's Ear Protection and Monitoring Systems • On-Site Service for Minor Repairs Otoacoustic Emmissions Testing • Speech in Noise Testing Real Ear Verification/Electroacoustic Analysis

MESA
(480) 981-3384
6550 E. Broadway Rd., Ste 206
Mesa, AZ 85206
David McBride M.S., FAAA
Monica Morgan Au.D., FAAA
Kimberly Gates Au.D., FAAA

TEMPE
(480) 831-6159
2034 E. Southern Avenue
Suite 1
Tempe, AZ 85282
Allen Rohe Au.D., FAAA
Amy Rohe M.A., FAAA

Chandler
(480) 899-0076
595 N. Dobson Rd, Ste D79
Chandler, AZ 85224
Kay Kochman Au.D., FAAA
Ellie Hattefi Au.D., FAAA



East Valley HEALTH and wellness

SPOTLIGHTING THE EAST VALLEY'S DEDICATED MEDICAL PROFESSIONALS

Tell your story in our special advertising supplement:

East Valley HEALTH and wellness

Your full page **advertorial** will be featured in a new **East Valley Tribune** publication that showcases those in the medical field committed to the health of our community.

Publishes: Sunday, June 30, 2013

Advertisers will have the opportunity to work with a professional writer to create an account of how your practice came about, and how it's thriving today!

Contact your Tribune multimedia sales consultant or call **480-898-6475** today to share your story with **250,000** potential customers!

SANDSTROM & EDWARDS DENTISTRY
Sandstrom & Edwards Dentistry:
Paul Sandstrom

Let us give you something to smile about.

DO YOU HAVE LOWER DENTURES THAT DON'T FIT? MISSING TEETH? TALK TO US ABOUT IMPLANTS!

NO APPOINTMENT NECESSARY
FREE EXAM & X-RAYS
PLEASE BRING THIS COUPON AT INITIAL VISIT

Dentures \$100 OFF
Partial Denture \$50 OFF
WITH COUPON EXPIRES 6/30/13

\$50 OFF
Crown, Bridge or Veneers
WITH COUPON EXPIRES 6/30/13

Denture Laboratory Reline \$149
WITH COUPON EXPIRES 6/30/13

Dr. Paul Sandstrom, Dentist
Dr. David Edwards, Dentist
480-396-8684

\$0 Interest Financing Available

A special publication of the East Valley Tribune



Southwest Ambulance



Rural/Metro Fire Department

Rural/Metro Fire Department and Southwest Ambulance Provide Life-Saving Services Every Day

Sixty-five years ago this year, just on the outskirts of what was then the incorporated area of Phoenix, a Phoenix newspaperman named Lou Witzeman stood, watching helplessly, as his neighbor's home burned to the ground. That incident spawned a venture that has since had an impact on hundreds of thousands of lives.

Witzeman first established a subscription-base fire service outside the city limits of Phoenix called "Rural Fire Department." That initial effort grew to become the Rural/Metro Fire Department.

Still based in the Valley, Rural/Metro now has emergency services that serve more than 400 communities across the nation, providing emergency medical transportation, non-emergency general medical transportation to healthcare facilities, fire protection services and emergency training services to private and commercial enterprise.



The Rural/Metro family of companies provides fire and emergency medical services to a variety of communities throughout Maricopa and Pinal Counties, including Carefree, Cave Creek, Fountain Hills, parts of the West Valley and the unincorporated areas of East Mesa.

Additionally, Rural/Metro Corporation owns Southwest Ambulance, which is the ambulance provider for many parts of the Valley, including Mesa, Queen Creek, Gilbert and Apache Junction.

Just like when it began, Rural/Metro and Southwest Ambulance still operate with that same "help your neighbor" philosophy that is its roots. Over the years, the company has continued to adapt to new advancements in emergency response and medical services. They also continue to reach out to the public to stress safety and awareness by conducting public education and safety information demonstrations in the communities they serve.

To learn more, visit www.ruralmetrofire.com.

MAKE WATER SAFETY A PRIORITY ALL YEAR LONG!

Your Rural/Metro Fire Department and Southwest Ambulance team want to help ensure you, your family and your friends to stay safe around water all year long. With the warmer weather coming and kids out of school for summer break soon, water-related injuries and emergencies happen.



Stay safe while you have fun around water!
Southwest Ambulance recommends these water safety tips:

- NEVER SWIM ALONE
- ALWAYS SWIM WHERE AN ADULT CAN SEE YOU
- ALWAYS OBEY POOL RULES
- NO RUNNING, PUSHING OR DUNKING
- LEARN TO SWIM
- NO ROUGH PLAY IN OR AROUND THE POOL

Brought to you by:



Southwest Ambulance



Rural/Metro Fire Department



MADISON AVENUE SALON & DAY SPA

Madison Avenue has come to Gilbert via Chandler and Phoenix

Madison Avenue Salon & Spa opened its fourth location this month in the Gilbert Oasis at the Islands. It joins the two locations in Chandler and a location in the Foothills section of Phoenix to offer indulgence in one of life's most luxurious salon and spa experiences.

The luxurious and upscale environment with a full range of salon and day spa treatments are part of what makes Madison Avenue Arizona's most premier salon and day spa. Add to that the staff's unique attention to mind, body and spirit harmony, and the Madison Avenue experience becomes like no other.

"Our salon and day spa provide treatments tailored to the needs of each guest and designed to promote wellness in their everyday life," said owner, Sean Larusso.

The full-service salon offers professional hair services, manicures and pedicures, massages, facials, waxing, wraps and exfoliations and traditional body therapies. It also features a full retail line that includes Redken, Pureology and Dermalogica.

Larusso says staff at all four Valley locations focus on each patron and his or her individual needs. Customers include women, men and children.

"Everyone from our front desk staff to our service providers attend regular training in the technical side of things as well as in how to give our clientele the best experience possible," Larusso said.

He said the ultimate goal is to treat customers "to the highest level of serenity and balance possible."

The vision for creating Madison Avenue Salon & Spa was fostered by nearly 100 years of experience in the business by the Larusso family.

"My grandfather was a barber for 35 years in New York and my father was a salon owner for 42 years. My wife and I opened our first Arizona location 15 years ago," said Larusso.



He said his wife, Deborah, was working as a stylist at a local salon and he was using his public accounting degree in a small accounting firm in Arizona when they decided to create the business.

"We knew we could take the heritage of our family and what I had learned in the business world and create a great experience for customers," Sean said.

The first location opened with 12 employees and now with the fourth location the company has 115 employees.

For details, including weekly specials, visit www.spamadison.com. For inquiries or to make an appointment at the new Gilbert salon, located at 81 S. McQueen Road, call 480-300-5100.

NOW OPEN IN GILBERT!
Oasis at the Islands
81 S. McQueen Rd. Gilbert, AZ 85233
480.300.5100

spamadison.com

MADISON AVENUE SALON & DAY SPA

**WOMEN'S
HAIRCUT**
\$22.00

Certain conditions may apply. This offer cannot be combined with any other offer and is subject to change without notice.

**WOMEN'S
HAIRCUT & COLOR**
\$54.00

Certain conditions may apply. This offer cannot be combined with any other offer and is subject to change without notice.

**ONE HOUR SWEDISH
MASSAGE**
\$39.00

Certain conditions may apply. This offer cannot be combined with any other offer and is subject to change without notice.

**EUROPEAN
FACIAL**
\$54.00

Certain conditions may apply. This offer cannot be combined with any other offer and is subject to change without notice.

***Offers valid at our new Gilbert location only.**



ABC Hearing: Dawn Sanchez

Dawn Sanchez started as a nursing student who needed a job. While working the front desk at Sandia Hearing Aids in Albuquerque, New Mexico, she found her niche.

"We were helping people with something that I wasn't able to do as a nurse. As a nurse all I could do was help the sick. Now with hearing, I found that I could help people improve their lives outside of the hospital, which I found to be intriguing," said Sanchez.

In 2003, while living in Albuquerque, New Mexico, and working for Sandia Hearing Aids, Sanchez was given the opportunity to manage the expanding practice in Arizona. Two years later, Dawn

and her husband, Sean, bought the practice and Sandia Hearing Aids became ABC Hearing Aids, LLC.

"It didn't make any sense to move. It was here, it worked, and people know where it is. It's a fixture around here," said Sanchez.

ABC Hearing is a small, family-owned hearing aid dispensing practice located in Mesa, between Stapley and Gilbert Roads. The office repairs all makes and models on-site and offers hearing instrument cleaning and inspections. The people at ABC Hearing focus on individualized and personalized care.

"The product does cost money, but it is not about money. It's about better quality of life through hearing. It's about us taking the time to find out what somebody's lifestyle is all about and making it better so that they can communicate with their loved ones," said Sanchez.



Dawn and her husband hope to expand their practice to several different locations throughout the valley in the next year.

480.964.2386

1441 E. Broadway, Mesa AZ 85204

(1/2 mile West of Gilbert Rd. on South side of Broadway)

www.canuhearwell.com



480.964.2386

1441 E. Broadway, Mesa AZ 85204

(1/2 mile West of Gilbert Rd. on South side of Broadway)

www.canuhearwell.com

Visit us on at 'ABC Hearing Aids'



CareCredit



Todd Faassè
Hearing Aid Specialist

WELCOME

ABC Hearing Aid's Newest Hearing Specialist

Hearing Evaluation: Find out what sounds you may be missing!

Video Otoscopy: Is your hearing loss just wax build-up?

Product Demonstration: Hear what our hearing aids can do for you!

Up To

\$1,000 OFF

**the Purchase of a
SDS Hearing System**

Limit one coupon per customer. Not valid with any other offers or promotions. Coupon expires 6/30/13.

Up To

\$489 OFF

**the Purchase of one
SDS Hearing Aid**

Limit one coupon per customer. Not valid with any other offers or promotions. Coupon expires 6/30/13.