



# BOZEMAN POLICE DEPARTMENT 2010 ANNUAL REPORT



## MISSION STATEMENT OF THE BOZEMAN POLICE DEPARTMENT

The Bozeman Police Department, in partnership with the citizens of Bozeman, is committed to improving the quality of life by identifying and resolving public safety concerns.



### CITY OF BOZEMAN FACTS

POPULATION OF BOZEMAN (2009)  
40,910

AREA OF BOZEMAN  
12,477 acres  
19 ½ square miles  
80 acres of parks  
250 miles of roads

TYPE OF GOVERNMENT  
City Manager  
City established on April 9, 1883  
Police Department established on April 12, 1883

BOZEMAN POLICE DEPARTMENT  
615 SOUTH 16<sup>TH</sup> AVENUE  
BOZEMAN, MT 59715  
[www.bozemanpolice.com](http://www.bozemanpolice.com)

## TABLE OF CONTENTS

Chief's Message_____	4	Detective Division_____	11
Calls for Service and Crime Statistics_____	5	Support Services Division_____	13
Budget Overview_____	6	Community Outreach_____	14
Department Organization_____	7	2011 Department Goals_____	15
Patrol Division_____	8		



## CHIEF'S MESSAGE

On behalf of the men and women of the Bozeman Police Department, I am proud to present our 2010 Annual Report. While this report provides some statistical information of our activities during the year, it is also an opportunity to share with you some highlights and achievements recorded within the last twelve months.



This was a year of significant change for the Bozeman Police Department. Late in 2009 Chief Mark Tymrak and Deputy Chief Mark Lachapelle retired from service after long and distinguished careers. Deputy Chief Marty Kent led the department as the interim chief until my appointment in July 2010. Certainly the transition of new leadership posed challenges for all, but the officers and staff of the department continued to respond to the many needs of this community as their number one goal.

In 2010 the Bozeman Police Department handled over 45,000 calls for service, an increase of 5% over 2009. During this time we fully implemented a beat system where officers were assigned to specific geographic areas of the city. This allowed for better proximity dispatching where the officer remains in an area closer to potential incidents. As a result, our response time to highest priority calls was reduced by over 25%.

We continue to focus on our hiring efforts so that we can meet the staffing goals set by our community in the 2007 Public Safety levy. We closed the year with 59 officers, the highest strength in the history of the Bozeman Police Department. Our efforts continue in the training function, bringing these new officers to the level of performance that our community expects.

The Bozeman Police Department continues to be recognized for our community involvement. Through participation in numerous community events, raising money for charity and those less fortunate, we have demonstrated our strong commitment to the community and the needs of others.



The first two sessions of the Bozeman Citizen Police Academy were held during this past year. This program is intended to open the lines of communication between the community and the police department and to provide citizens a better understanding of police functions and what an officer experiences on a day to day basis. In total, 58 members of our community graduated after being part of nine weeks of classroom and hands-on instruction. With a shared understanding of the role of both the community and the needs of the profession, graduates have now been incorporated into our selection interviews of new officers and our promotional testing process.

We are committed to delivering the highest level of service to the citizens of this community, and to serve with professionalism and compassion. Please feel free to contact us with any thoughts or ideas on how we can improve our service to you.

Sincerely,

Ron Price

## BUDGET OVERVIEW

The Bozeman Police Department is operating on a budget of \$6,760,997 for Fiscal Year 2011. The main source of this money is tax-based. Other funding sources include drug forfeitures, grants and special revenues. This budget amount includes all projected costs of personnel salaries and benefits, uniforms, training, equipment, supplies, contracted services and Capital Improvement Plan purchases, such as the replacement of police cars.

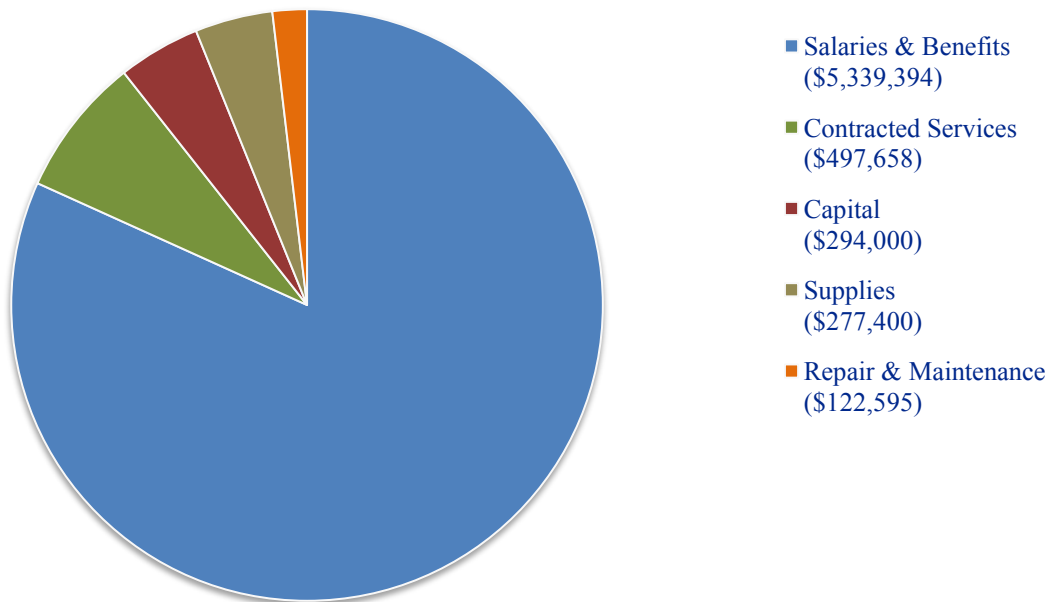


The budget funds services from all three divisions within the Bozeman Police Department: Patrol, Detectives and Support Services. Included within this budget are the services provided by the Animal Control Officers, drug interdiction and enforcement services of the detectives assigned to the Missouri River Drug Task Force and the popular D.A.R.E. program.

The command staff of the Bozeman Police Department carefully assembles the upcoming year's budget being constantly mindful that we have been entrusted to be the stewards of the public's money. This is a responsibility we take seriously. As an example, at the end of Fiscal Year 2010, the department returned \$580,165 of unspent funds equaling approximately 8% of our FY2010 budget.

Preparation of future budgets is based on the previous year's actual expenditures, identified needs and careful forecasting. Though predicting future needs can be difficult, experience and thoughtful planning have taught us to be accurate, reasonable and sound in our budgetary requests.

### FY2011 Police Department Budget Expenditures



## CALLS FOR SERVICE AND CRIME STATISTICS

Members of the Bozeman Police Department respond to dispatched calls and initiate activity based on their own observations. Together, these incidents are referred to as calls for service. The patrol officers handle over 80% of these calls, with the average officer responding to 1,069 incidents annually. This year, calls for service increased by approximately 5%, the majority of which were officer initiated.

Year	Calls for Service	Formal Criminal Reports	Total Arrests	Traffic Stops	Traffic Citations	DUI Arrests
2010	45,388	5,306	2,443	10,797	5,916	442
2009	43,192	5,360	2,525	11,206	6,914	612
2008	43,925	5,803	2,817	11,636	7,912	514

State-wide crime reporting is based on a category referred to as “Index Crimes”. The index crimes are identified as reported incidents of Homicide, Rape, Robbery, Aggravated Assault, Burglary, Larceny and Motor Vehicle Theft. It is through the use of this index that rates can be compared across a span of years and beside other jurisdictions. The information displayed shows the raw total of crime data (Index Crimes) and the number of crimes per 1,000 population (Crime Rate).

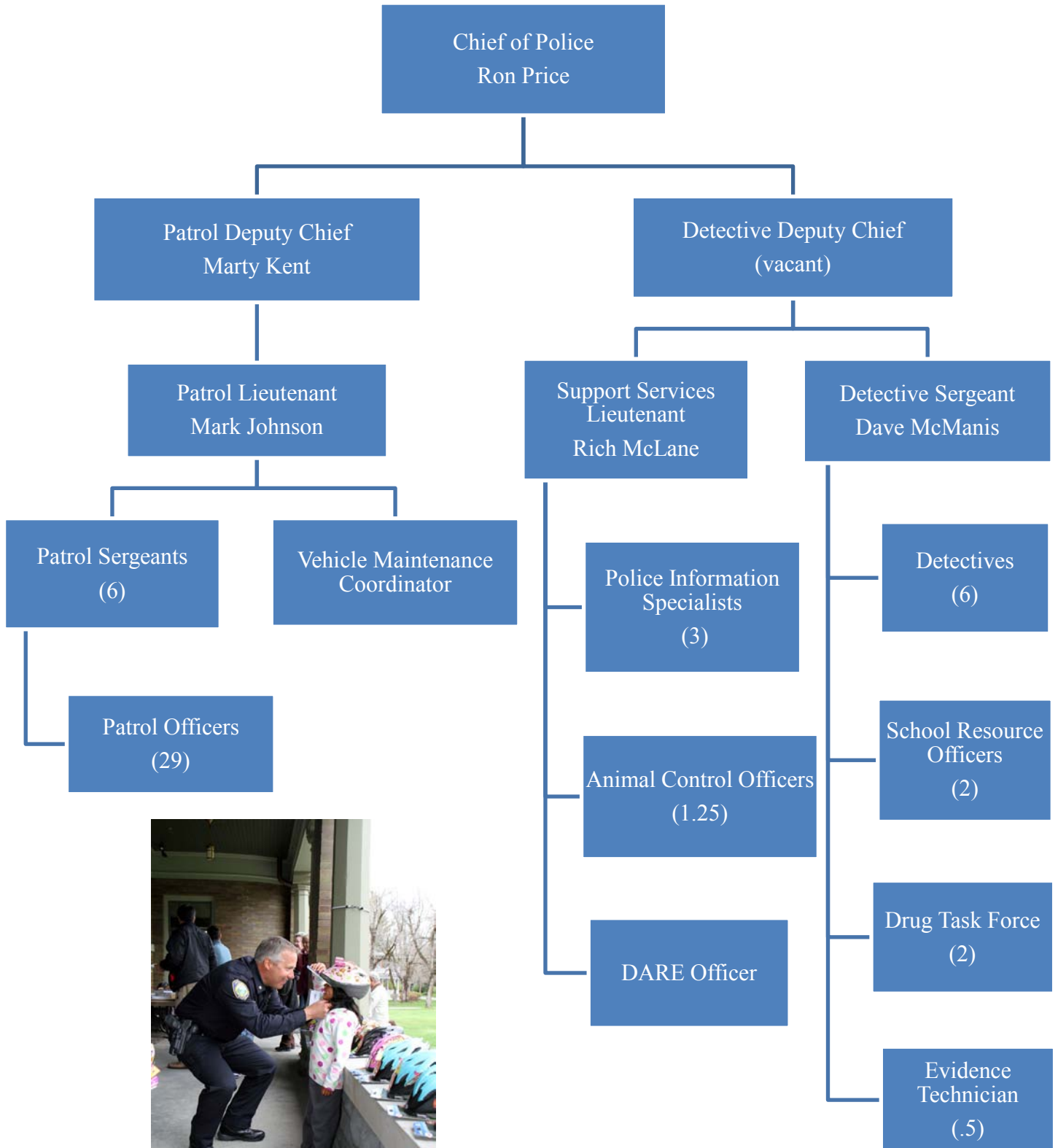
Year	Population	Index Crimes	Rate per 1,000	Homicide	Rape	Robbery	Aggravated Assault	Burglary	Larceny	Motor Vehicle Theft
2009	40,910	1,370	33.5	1	13	13	51	131	1,085	76
2008	39,408	1,538	39.0	1	16	15	57	122	1,251	76
2007	36,158	1,751	48.4	0	19	15	48	136	1,299	120
2006	32,722	1,642	50.2	0	21	15	48	136	1,299	123
2005	31,063	1,744	56.1	0	17	11	40	217	1,329	130

### Comparable cities in Montana

City	Population (2009)	Index Crimes	Rate per 1,000	Homicide	Rape	Robbery	Aggravated Assault	Burglary	Larceny	Motor Vehicle Theft
Kalispell	21,986	1,247	56.7	1	8	6	50	110	1,022	50
Butte	32,604	1,589	48.7	1	23	16	115	181	1,123	130
Great Falls	59,499	2,678	45.1	6	14	49	106	262	2,218	113
Billings	105,427	4,883	46.3	2	32	82	102	760	3,640	265
Helena	29,718	1,160	39.0	1	22	17	68	128	858	66
<b>Bozeman</b>	<b>40,910</b>	<b>1,370</b>	<b>33.5</b>	<b>1</b>	<b>13</b>	<b>13</b>	<b>51</b>	<b>131</b>	<b>1,085</b>	<b>76</b>
Missoula	69,479	2,302	33.1	1	29	29	120	278	1,748	97

*(Crime data provided by the Montana Board of Crime Control-Helena, MT)*

# DEPARTMENT ORGANIZATION



## PATROL DIVISION

The Patrol Division is comprised of three shifts of uniformed patrol officers who perform a multitude of tasks, to include traffic enforcement, responding to emergencies, investigating criminal activity, and conducting proactive patrol. The Patrol Division operates around the clock everyday of the year and handles over 80% of the department's calls for service each year.

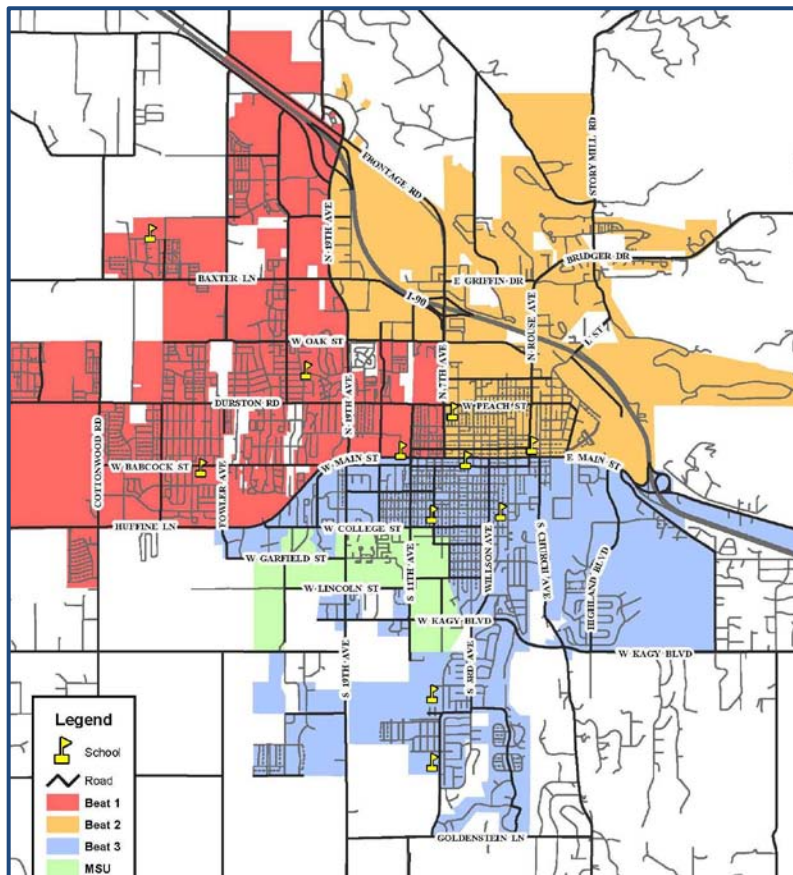


MAIN STREET-1966

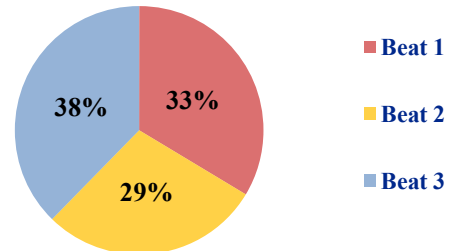
## PATROL BEATS

The city is divided into three patrol beats for the purpose of equally distributing police resources around the city. This increases public safety and police service in a number of ways to include better patrol officer allocation throughout the city, decreased response times, and increased police visibility. Patrol beats also allow our officers to become more familiar with the neighborhoods and businesses they patrol along with public safety issues that may be specific to that area of the city.

### BOZEMAN POLICE DEPARTMENT PATROL BEATS



### Patrol Division Calls for Service



Main Street-2011



Average Response Time (in minutes)		
Call Priority	2009	2010
1	6.56	4.84
2	10.60	6.01
3	14.45	9.59
4	20.54	19.88

A significant reduction in response times was one of the benefits of the implementation of our patrol beat plan. Our call priorities range from 1 - high priority (e.g., robbery in progress) to 4 - low priority (e.g., noise complaint).



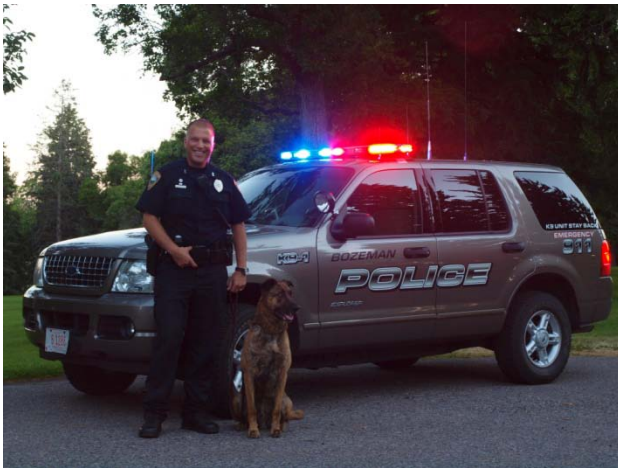
### PATROL STAFFING

Throughout 2010, the patrol division hired and trained eleven police officers to fill vacancies and positions due to retirements and resignations, as well as what was authorized by a 2007 voter approved public safety mill levy. These new officers have attended 12 weeks of classroom and hands-on training at the Montana Law Enforcement Academy. Upon successful completion of the academy, these officers were placed into our department’s comprehensive 14 week Field Training Evaluation Program before being allowed to patrol the streets on their own.

With the recent addition of our new patrol officers, we are finding more time to be proactive and visible on our city streets, thus resulting in a decrease in dangerous driving behaviors. As we continue to fill our current vacancies, we intend to implement a full-time dedicated traffic enforcement team to make our streets safer for drivers, bicyclists and pedestrians through education and enforcement.

### PATROL SPECIALTY AREAS

The patrol division contains a number of specialty assignments that increase public safety and the department’s police service capabilities. These assignments offer career opportunities for our officers and allow for them to improve their career skills and specialize in an area of interest.



Our **K9 Program** consists of two patrol officers and their canines Cage and Taco. The K9 program serves both the community and our officers by providing patrol functions as well as locating illegal narcotics and conducting searches of buildings, vehicles and other property for illegal substances and suspects. Our teams of K9 units conducted 52 drug sniffs in residences and vehicles, 17 tracks of suspects and 21 searches of buildings where evidence showed forced entry was made by a suspect.

The **Motorcycle Patrol Officers** are primarily assigned to traffic enforcement and crash investigations. They also participate in leading parades and escorts throughout the year for events and organizations in our community.



Our **Mountain Bike Patrol Officers** focus their attention on areas of the city generally not accessible by a police car, such as parks and trails. Our bike officers regularly appear at special events, such as bike rodeos and parades. During the summer of 2010, five bike officers pedaled in excess of 440 miles, conducted 542 property checks and made over 200 citizen contacts.



Our **Honor Guard** provides the department with a specially trained ceremonial team to render honors, preserve tradition. They provide guidance and uniformity while performing ceremonies throughout the year, including funerals, formal services and other events.



The Gallatin County **Critical Incident Stress Management Team** is a multi-agency group of community volunteers which includes officers from the Bozeman Police Department. This team is dedicated to assist emergency services personnel in dealing with the stress our first responders deal with each and every day. The team provides assistance to several agencies both inside and out of Gallatin County.



In 2010, our highly trained **Special Response Team (SRT)** responded to eight high-risk incidents involving barricaded and/or armed subjects in a variety of locations including rural parts of Gallatin County, areas within the city of Bozeman, Big Sky and Livingston, Montana. The team is comprised of officers from both the Bozeman Police Department and the Gallatin County Sheriff's Office. In 2010, they took first place against tactical teams from around the state of Montana at the Mountain States Tactical Officer's Association Tactical Team Competition in Helena.

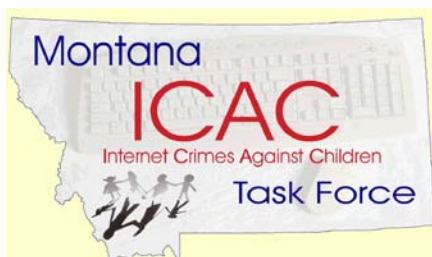
## DETECTIVE DIVISION

The Bozeman Police Department Detective Division consists of a sergeant and five general detectives. Our general detectives are responsible for investigating felony criminal activity, conducting public education, background investigations on prospective employees, internal investigations and assisting other agencies with investigations.



In April 2010, the department created a six month rotating position within the Detective Division. This new position is designed to expose patrol officers to more complex investigations than they would normally handle on patrol. Upon completion of the detective rotation, the patrol officer will then enhance the patrol division's investigative abilities through training and mentorship.

Year	Cases Opened	Violent Crimes	Sexual Crimes	Property Crimes	Agency Assists	Hiring Backgrounds
2010	214	69	51	72	22	28
2009	199	44	54	71	30	24
2008	197	54	38	69	36	18



The Bozeman Police Department is a member of the **Montana Internet Crimes against Children (ICAC) Task Force**. The Montana ICAC Task Force is part of a nationwide initiative to enhance investigative response to computer facilitated crimes against children and conducts both proactive and reactive investigations to protect children from on-line predators. In addition to criminal investigations, the Montana ICAC Task Force provides education to the public on computer facilitated child exploitation.

Our department is responsible for ensuring all violent and sexually violent offenders residing in the city limits of Bozeman have registered a current address with our department. Registration also ensures that the department has current photographs, fingerprints and DNA samples of subjects living in our area that are convicted of qualifying offenses. In 2010, 28 sex offenders and 49 violent offenders were registered and monitored by the Bozeman Police Department and listed on the Montana Department of Justice website for public access. Our officers physically verified the residency of every offender registered within the city limits to ensure compliance.



## DRUG TASK FORCE



Two detectives from the Bozeman Police Department are assigned to the Missouri River Drug Task Force. This task force is focused on the investigation of local and regional drug and firearm offenses. The detectives work closely with local, state and federal agencies, often investigating complex, long-lasting cases that involve multiple suspects. A single 2010 conspiracy investigation has been ongoing for over a year and has resulted in multiple state and federal charges related to the transportation and distribution of multiple pounds of methamphetamine into Bozeman and the Gallatin County area.

During this past year, the members of the task force became increasingly called upon to investigate complaints regarding potential violation of medical marijuana laws. This is an area that is poorly defined in law yet very visible in public discussion and opinion. Absent state-wide guidance, the City of Bozeman acted proactively to provide for regulation and community protections.



The following statistics identify specific criminal charges filed during the listed calendar years for specific illegal narcotics. These numbers do not reflect ongoing investigations or cases that did not result in criminal charges being filed.

Year	Prescription Drugs	Marijuana	Cocaine	Methamphetamine	Other Drugs
2010	17	35	25	25	8
2009	24	43	22	24	3
2008	20	24	50	38	3

### SCHOOL PARTNERSHIPS

In partnership with the Bozeman School District, our department continues to ensure the safety and education of over 5,500 children in our schools. We have two School Resource Officers assigned to these duties full-time, with the funding being shared with the school district. The goals of the School Resource Program are to collaboratively work with educators, students, parents, and the community to provide a safe school environment, and offer law-related educational programs in the schools in an effort to reduce the crime, drug abuse, and violence.

Our department's role within the school district has evolved dramatically over the past two years, with additional focus on complex case investigations, student risk assessments and school safety plans.

The D.A.R.E. Program provides for education and mentorship between the police department and students in the elementary schools. During the 2009-2010 school year, our single D.A.R.E. Officer provided instruction to over 800 third and fifth grade students.



### EVIDENCE TECHNICIAN



The Bozeman Police Department provides one-half level funding for an Evidence Technician position that is shared with the Gallatin County Sheriff's Office. During this past year, the Evidence Technician managed evidence from approximately 800 cases. These cases were generated by the Bozeman Police Department, Gallatin County Sheriff's Office, Missouri River Drug Task Force and Gallatin County Coroner's Office. In addition to documentation, storage and proper disposal of evidence, the technician is responsible for crime scene response, processing items for fingerprints and other trace evidence as well as forwarding items to the Montana Crime Lab for examination.

## SUPPORT SERVICES DIVISION

### ANIMAL CONTROL

The Bozeman Police Department Animal Control Unit has one full-time and one part-time animal control officer, and is assisted by the patrol division. Their primary duties include dealing with failure to leash, vaccinate or license dogs. They also assist with loose livestock, wildlife at large, exotic pet licenses, and inspections of residences for kennel or chicken licenses. This past year, we issued most violations as civil, rather than criminal, to provide a less punitive method of changing behavior.



Year	Animal Complaints	Criminal Citations Issued	Civil Citations Issued	Kennel License Inspections
2010	2,873	28	681	19
2009	2,492	534	148	15
2008	2,211	639	0	15

### PARKING ENFORCEMENT



The department's role has changed dramatically over the past year with regard to parking enforcement. In January 2010, the City of Bozeman Parking Commission assumed full responsibility for enforcement of the downtown, MSU and high school districts. Three parking officers formerly assigned to the police department were transferred to the parking commission. All other areas of the city with parking concerns continue to require our one parking officer and patrol officer

enforcement efforts to handle after hours parking complaints and identifying and removing abandoned vehicles from the streets.

In late 2009, we identified a need to hold habitual parking violators accountable, with several hundred vehicle owners owing substantial parking fines. A new city ordinance was presented and adopted that allowed for the "booting" and impounding of vehicles with six or more unpaid parking tickets. This change of policy has led to an increase in parking compliance, as well as recoupment of unpaid parking tickets, with 39 vehicles booted and \$22,000 in fines recovered.

The Bozeman Police Department conducts auctions throughout the year where abandoned or unclaimed bicycles and vehicles are sold to the general public. In 2010, proceeds from these auctions resulted in \$15,371 being returned to the city budget to help offset costs of removal and storage.

Year	Parking Complaints	Parking Citations	Abandoned Vehicles	Vehicles Towed	Bicycles/Vehicles Sold at Auction
2010	1,897	4,067	862	74	112
2009	1,928	5,807	1,090	119	222
2008	1,670	5,026	1,100	159	220

## COMMUNITY OUTREACH

The Bozeman Police Department works proactively with Bozeman's citizens to decrease criminal activity and increase community awareness through education, such as the citizen's police academy, safety events, attending neighborhood meetings and presenting public talks to adults and children in our community about personal and home safety.



In December of 2010, the Bozeman Police Department adopted a local, needy family for Christmas. Officers and their families bought presents for the family of six and delivered the presents, via two fully loaded police cars, just before Christmas.



Many of our officers and their families remained heavily involved in supporting local fundraising events, such as the CASA of Montana Park-2-Park ride and the Montana Special Olympics Law Enforcement Torch Run. Our Officers also coordinated and participated in the 9<sup>th</sup> annual President's Day Plunge, raising over \$30,000 for Special Olympics Montana and our state's rural athletes.

## 2011 DEPARTMENT GOALS

- Implement reorganization of the department to better provide leadership, accountability and community service.
  - Establish clear lines of supervisory authority and identify duties by division and individual position.
  - Improve community outreach through a proactive approach to crime response, public education and partnerships.
- Establish and begin implementation of a multi-year strategic plan.
  - Identify an internal planning committee representing all levels of the department.
  - Conduct stakeholder meetings to obtain community, business and university input.
- Evaluate and implement programs to reduce unsafe driving.
  - Establish a dedicated traffic enforcement unit.
  - Train two officers as Drug Recognition Experts (DRE) to better identify drug related impairment and improve prosecution of these offenses.
  - Identify and train new motorcycle patrol officers to reach full staffing level.
- Leverage technology toward increased efficiency and communication.
  - Implement Automated Fingerprint Identification System to provide timely and effective identification of suspects.
  - Continue development and implementation of electronic ticketing and report writing programs.
  - Evaluate feasibility of on-line crime reporting.
- Complete the evaluation of the Law and Justice Center to identify deficiencies and space needs. Establish a plan for replacement and improvement options of our law enforcement facilities.
  - Complete renovations of downtown sub-station and provide for public access and officer staffing.

**2010 BOZEMAN POLICE DEPARTMENT  
ANNUAL REPORT**

PRODUCED BY:

Bozeman Police Department  
Command Staff

ADDITIONAL CONTRIBUTORS:

Sergeant Steve Crawford  
Sergeant Andy Knight  
Detective Jim Veltkamp  
Detective Dana McNeil  
K9 Officer Marek Ziegler  
K9 Officer Bryan Moen



BOZEMAN ROUNDUP PARADE DOWN MAIN STREET (1940'S)