

BELGRADE NEWS

BELGRADE-NEWS.COM

FRIDAY | AUGUST 30, 2013



FRIDAY WEATHER



81° high | 44° low
FORECAST • A2

INSIDE



A SORDID TALE?:
Two Montana film makers document exotic dancers
A3

FISHING REPORT:
A look at fishing activity on rivers in the area
A4

SPORTS

SECTION B



KICK OFF:
Belgrade gridders open 2013 season against Butte Central
B1



TOUGH OPENER:
BHS spikers face tall task with opener against Falcons
B1

CONNECT WITH US ONLINE
www.belgrade-news.com
facebook
www.facebook.com/belgradenews
twitter
www.twitter.com/belgnews

INTERSTATE 90 INTERCHANGE

Belgrade City Council to decide road access

Curved portion of Dry Creek Road to removed for safety reasons

BY MICHAEL TUCKER • EDITOR

It's still about a year out, but plans are in the works to figure out how the by-pass road that will run through Gallatin Field will connect with Belgrade. The road is part of the Interstate 90 interchange project.

Representatives from Belgrade, Gallatin County, Bozeman Yellowstone International Airport and Montana Department of Transportation officials meet Wednesday to hash out numerous details on the road.

What is known is the curve on Dry Creek Road that leads into the city will be eliminated. MDT officials said the agency is

shying away from Y-intersections for safety reasons. Motorists using Dry Creek will have to use the by-pass road to enter the city. The question is how that will be done.

As it stands, engineers from Morrison-Maierle, Inc. have drafted a few possible options.

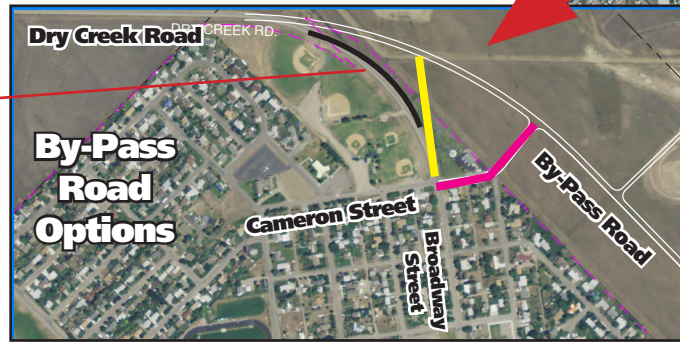
The first option is to extend Cameron Street to the by-pass road. The second option is to reconstruct Broadway Street into a straight stretch to connect to the by-pass road. The third option is to build

both roadways.

The least expensive option is to extend Cameron Street and seems to be the favorite of the group.

Straightening and extending Broadway would be more expensive due to the rise in the roadway grade built to make the curve safe.

continued | **By-pass** Page A19

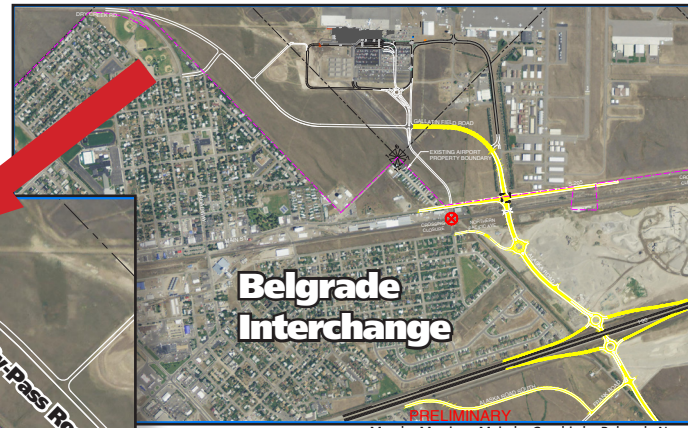


■ The bend in Dry Creek Road is going to be eliminated.

■ **Option One** – Connect the By-Pass Road by using Cameron Street.

■ **Option Two** – Straighten Broadway Street to connect to the By-Pass Road

■ **Option Three** – Build both connecting roads.



The above map shows the planned Interstate 90 interchange east of Belgrade. The yellow lines in the above map are the roads to be built.

Map by Morrison-Maierle; Graphic by Belgrade News

Unforeseen Expenses



Belgrade News archives

A soccer field gets irrigated in this file photo. Belgrade School District officials said there isn't any money left from the 2011 school bond.

District is out of money for soccer complex

BY HANNAH STIFF
STAFF WRITER

The money is gone. At least when it comes to funding designated for the new Belgrade soccer fields.

"We are done," Superintendent of Belgrade Schools Candy Lubansky said. "We completed our obligation to the school."

That obligation was to construct "associated playing fields" for soccer athletes to play on, as the ballot language stated when voters approved a \$12.4 million bond in 2011.

That bond money paid for Saddle Peak Elementary School and soccer fields to replace what the new school paved over.

Originally, the district estimated putting \$750,000 toward the field construction. The new soccer pitches cost \$672,000. The \$78,000 difference had to be put toward unexpected Saddle Peak costs, Lubansky said.

Now that the fields are laid, the soccer

community is confused and upset.

"Where they were before, they had good soccer fields, a good scoreboard, bleachers for people to sit in," Soccer dad Bill DeBuse said. "They don't have any of that now."

DeBuse and two other dads met Monday afternoon at a Belgrade coffee shop to discuss the soccer fields. The parents said the new pitches are bumpy and unsafe for students.

Gary Turner, another soccer dad and Belgrade business owner, said he's not afraid to put in manual labor to get the fields up to snuff, but schools officials insisted nothing was wrong.

"We're willing to work, lay sod, pay for it," Turner said. "All we got (from officials) is, 'We got it. We got it.' Until they say, 'We don't go it.'"

Turner is the president of the board for the Belgrade Rage club soccer team. He said

continued | **Soccer** Page A18

Salvation Army teams up Family Promise to offer tools for school

BY HANNAH STIFF
STAFF WRITER

Last year, the Salvation Army bins for school supplies sat woefully empty. The few bins that were filled held trash, not crayons for kids.

So the Salvation Army ended up using a large portion of its budget to buy paper, pencils and backpacks for needy kids. This year the Salvation Army was going to forego the project all together.

Until a case manager from Family Promise hatched an idea.

"A lot of the families I work with are young, often a one-parent families," Family Promise Case Manager Kacie Grue said. "The cost of living in Bozeman is so high, all their money is going to rent."

Family Promise works to help homeless families get back on their feet by offering temporary lodging and meals in churches. The non-profit also runs a day center for families to look for work and apartments.

In addition to running a large thrift store, the Bozeman Salvation Army is involved in many goodwill projects, like giving Christmas presents to needy children and hosting addiction and rehabilitation programs.

Bringing the two entities together for a common goal was, well, common sense.

"We both see and need and it was going to work better for us to team up,

continued | **Tools** Page A18

PRESORTED STANDARD
U.S. POSTAGE
PAID
PERMIT NO. 8
BELGRADE, MT 59714